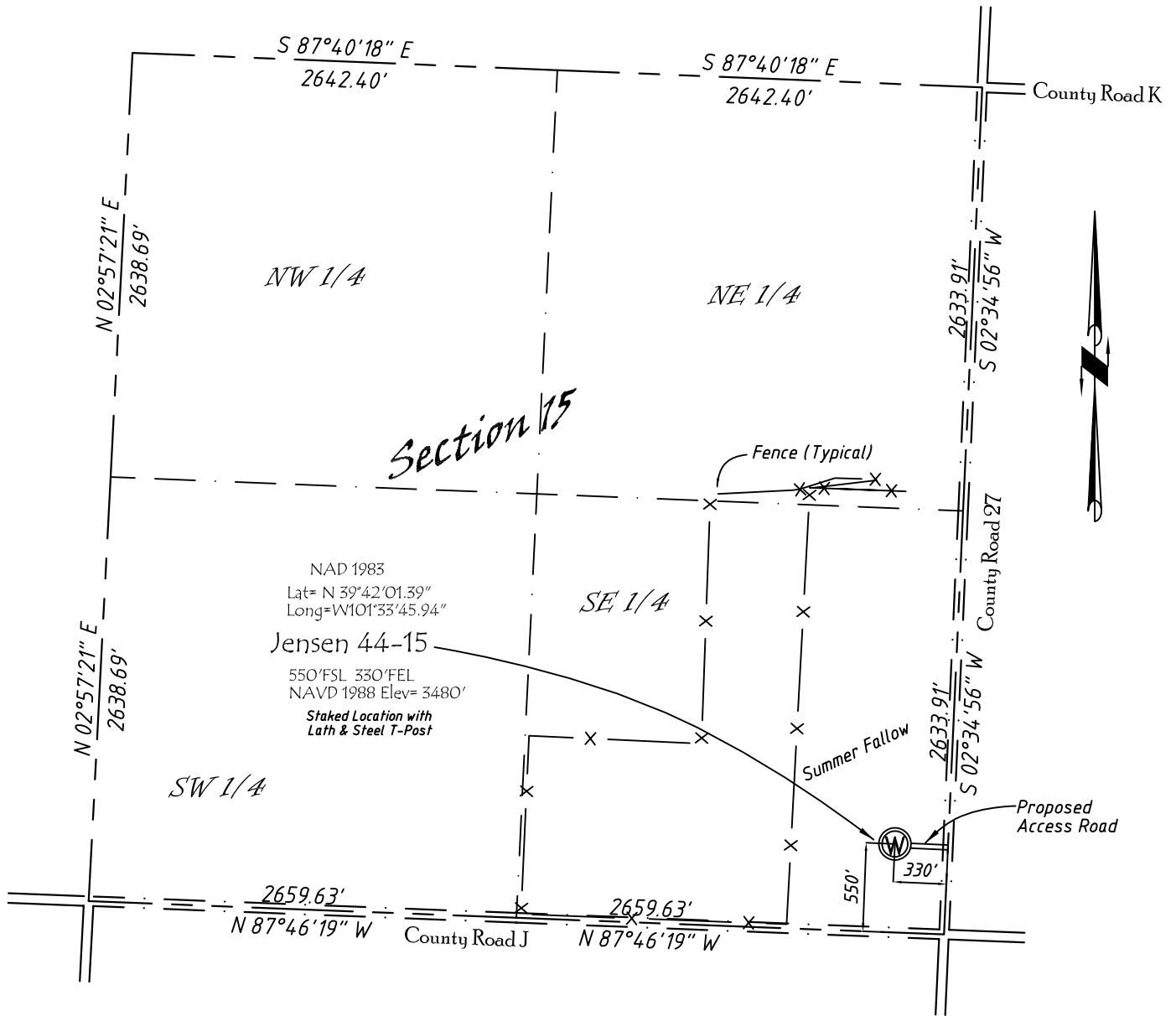


Well Location Map

# Jensen 44-15

SE 1/4, SE 1/4, Section 15, T4S, R38W, 6th P.M. Cheyenne County, Kansas  
 550' FSL - 330' FEL Elev=3480'



Note: No electrical lines, pipelines or tank batteries are currently planned for this location.

Copyright © 2011

*Directions:*

From the Intersection of the County Road 27 & Hwy 36 West of Bird City, KS,  
 Go South on County Road 27, 3.9 miles. Then W 330 feet to Staked location.

*This Drawing is for Construction Purposes Only*

<b>Noble Energy, Inc.</b>		
<b>DRAWN</b> SP	<b>DATE</b> 8/26/11	<b>Section 15</b>
<b>FB</b> B76 P38	<b>EQ</b> HijPro	T4S, R38W, 6th P.M. Cheyenne County, KS
<b>SCALE</b> 1"=1000'	<b>SHEET</b> 1 of 1	<b>PROJECT NO.</b> 1570.191

North  
Winds  
Surveys, Inc.

402 Walnut  
Kanorado, KS  
785/399/2551