

Thomas J. Funk
Petroleum Geologist
785-542-3359

Geologist's Report
Drilling Time and Sample Log

OPERATOR Murfin Drilling Co., Inc
LEASE Soil
FIELD Wildcat
LOCATION 1700' FSL & 1215' FEL
SEC. 17
COUNTY Thomas

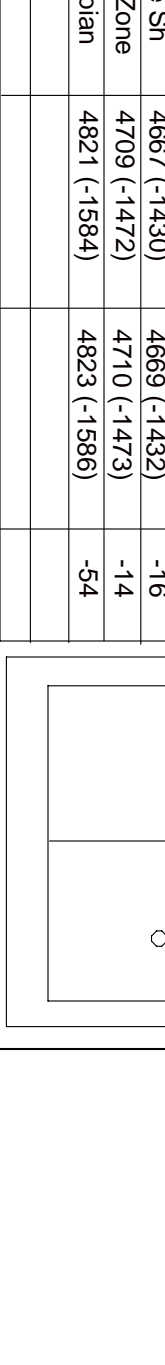
API 15-193-20801
WELL NO #1-17
ELEVATION
KB 3237
DF
GL 3226
Measurements Are All From **KB**

CASING RECORD
SURFACE 8 5/8" at 269'KB w/195x
RITD 4875 TO TD
SAMPLES SAVED FROM 3800 TO TD
DRILLING TIME KEPT FROM 3800 TO TD
SAMPLES EXAMINED FROM 3800 TO TD

GEOLOGICAL SUPERVISION FROM 3815 TO TD
MUD JP 3500
TYPE MUD Chemical

FORMATION	LOG TOP DATUM	SAMPLE TOP DATUM	STRUCT COMP
Anhydrite	2744 (-483)	2747 (-480)	-8
B/Anhydrite	2770 (-467)	2777 (-460)	-9
Topoka	3903 (-66)	3906 (-66)	-8
Heebner Sh	4119 (-82)	4122 (-82)	-8
Lansing	4160 (-92)	4161 (-92)	-9
Mancke Creek	4299 (-106)	4303 (-106)	-9
Stark Sh	4386 (-149)	4387 (-150)	-5
Marmaton	4475 (-123)	4480 (-123)	-10
Pawnee	4593 (-136)	4598 (-136)	-15
Carondelet Sh	4667 (-143)	4669 (-143)	-16
Johnson Zone	4709 (-147)	4710 (-147)	-14
Mississippian	4821 (-154)	4823 (-154)	-54

ELECTRICAL SURVEYS
Log-Tech
DIL
MEL
CNL/OCL BHCS

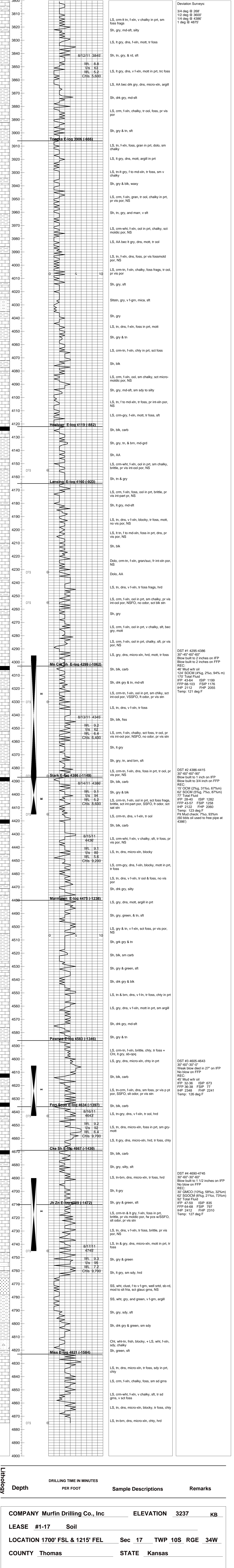


REFERENCE WELL FOR STRUCTURAL COMPARISON: Murfin Drig Co. #1-20 Steele A. 1760' FNL & 1450' FEL sec. 20-10S-34W, Thomas Co, KS

Daily Progress	Bit Record							
Date	Depth	NOI	Size	Make	Type	Depth Out	Feet	Hours
8/8/11	Spud	1	12 1/4"	HTC	RR	268	268	2
8/9/11	268' WOC							
8/10/11	1807'	2	7 7/8"	HTC	502s	3589	3331	46
8/11/11	3400'	2	7 7/8"	HTC	G3X2C	4875	1276	60
8/12/11	3815'							
8/13/11	4317'							
8/14/11	4386'							
8/15/11	4415'							
8/16/11	4643'							
8/17/11	4745'							
8/18/11	4875' TD							

Remarks and Recommendations:
 Based upon log analysis, DST recovery, and sample examination, it was recommended that the #1-17 Soil be plugged and abandoned.

Thomas Funk
Petroleum Geologist



COMPANY Murfin Drilling Co., Inc	ELEVATION 3237	KB
LEASE #1-17	Soil	
LOCATION 1700' FSL & 1215' FEL	Sec 17	TWP 10S RGE 34W
COUNTY Thomas	STATE Kansas	

Lithology