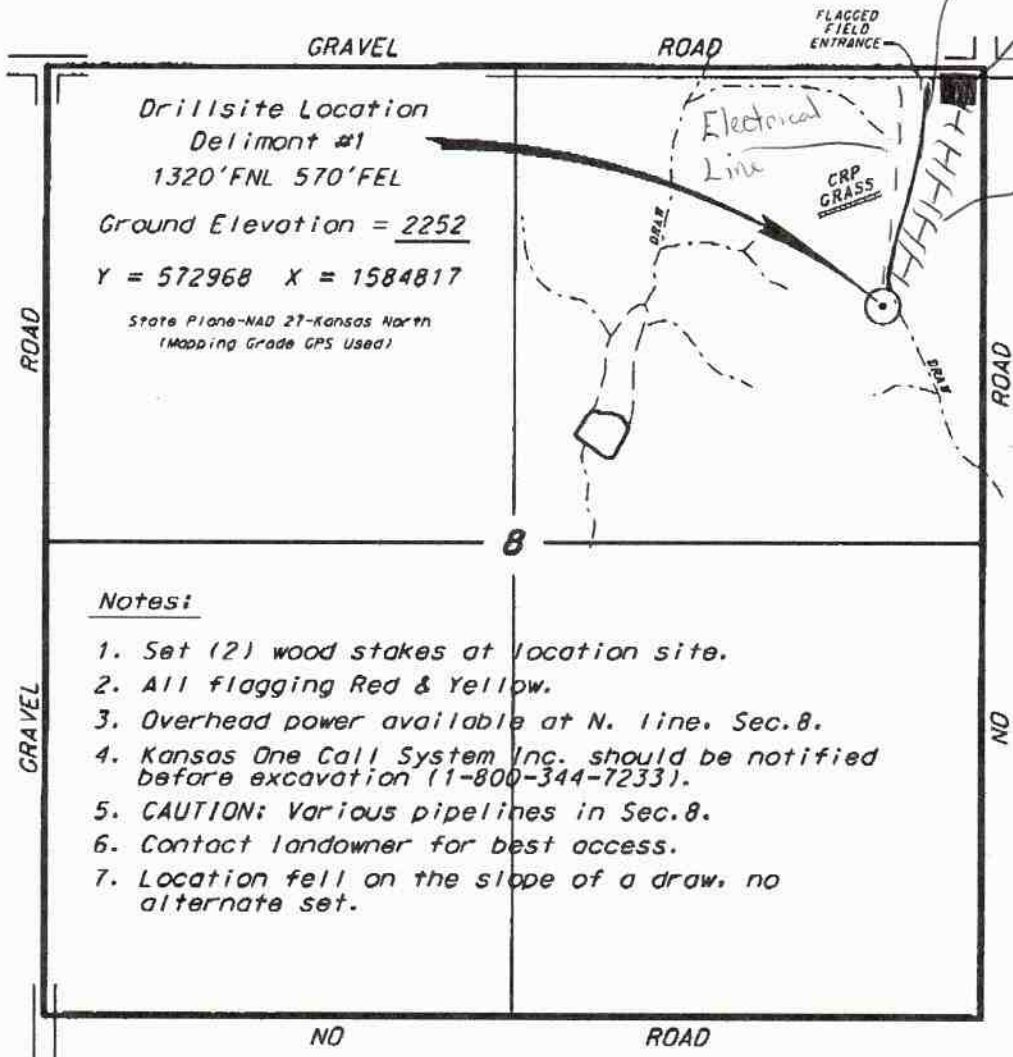


BACH OIL PRODUCTION, INC.
DELIMONT LEASE
NE. 1/4, SECTION 8, T2S, R19W
PHILLIPS COUNTY, KANSAS

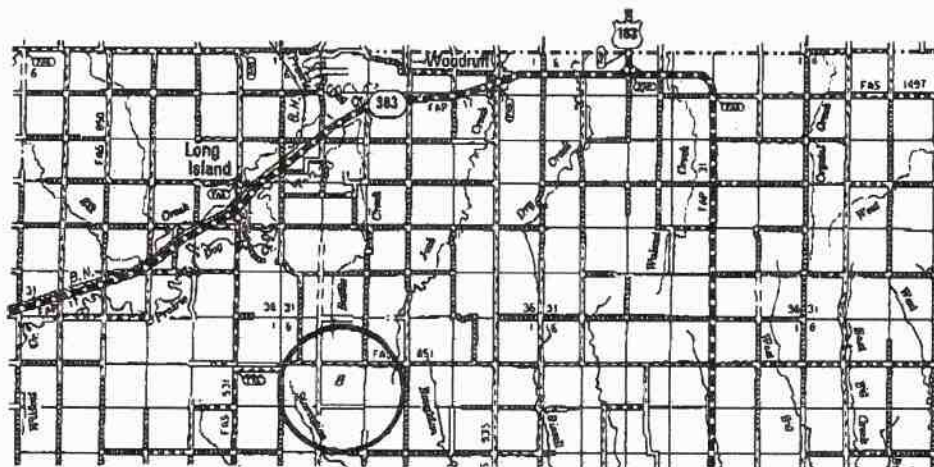


Drillsite Location
Delimont #1
1320'FNL 570'FEL
Ground Elevation = 2252
Y = 572968 X = 1584817
State Plane-NAD 27-Kansas North
(Mapping Grade GPS Used)

Notes:

1. Set (2) wood stakes at location site.
2. All flagging Red & Yellow.
3. Overhead power available at N. line, Sec. 8.
4. Kansas One Call System Inc. should be notified before excavation (1-800-344-7233).
5. CAUTION: Various pipelines in Sec. 8.
6. Contact landowner for best access.
7. Location fell on the slope of a draw, no alternate set.

*Ingress and egress to location as shown on this plot is per usage only and may not be legally opened for public use. Contact landowner, tenant and county road department for access.



• Controlling data is based upon the best maps and photographs available to us and upon a regular section of land containing 640 acres.
 • Approximate section lines were determined using the normal standards of care of oilfield surveys, prevailing in the state of Kansas. The section corners, which establish the precise section lines, were not necessarily located, and the exact location of the drillsite location in the section is not guaranteed. Therefore, the operator securing this service and accepting this plot and all other parties relying thereon agree to hold Central Kansas Oilfield Services, Inc., its officers and employees harmless from all losses, costs and expenses and shall entities released from any liability from inclusions or consequential damages.
 • Elevations derived from National Geodetic Vertical Datum.

Date August 31, 2011