

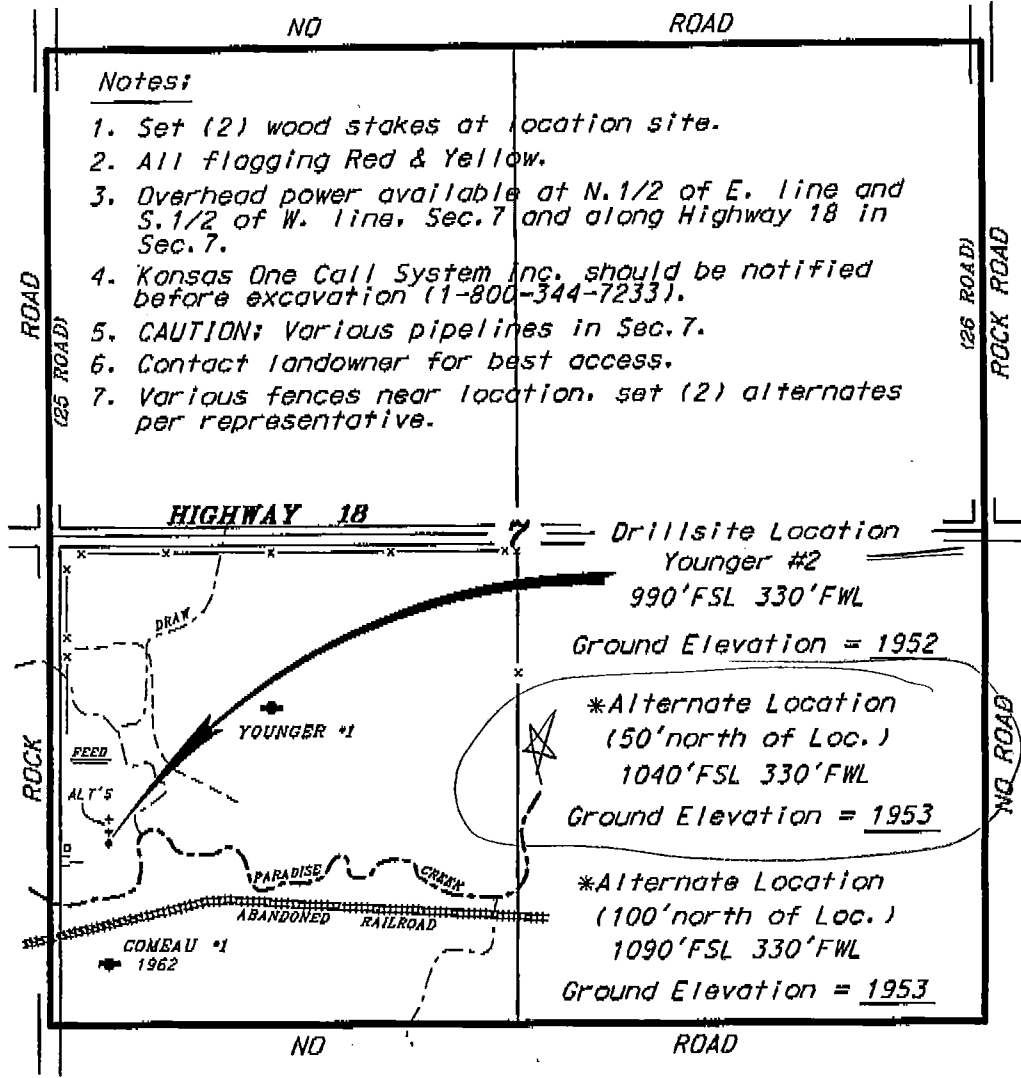
**VESS OIL CORPORATION
YOUNGER LEASE
SW. 1/4, SECTION 7, T10S, R16W
ROOK'S COUNTY, KANSAS**

*Directions:
From the intersection of Highway 18
and a n-s county road 0.75 miles East
of Cadell, Kansas, go 0.31 miles South
on a county road, then go 0.06 miles
East to location.*

Notes:

1. Set (2) wood stakes at location site.
2. All flagging Red & Yellow.
3. Overhead power available at N. 1/2 of E. line and S. 1/2 of W. line, Sec. 7 and along Highway 18 in Sec. 7.
4. Kansas One Call System Inc. should be notified before excavation (1-800-344-7233).
5. CAUTION; Various pipelines in Sec. 7.
6. Contact landowner for best access.
7. Various fences near location, set (2) alternates per representative.

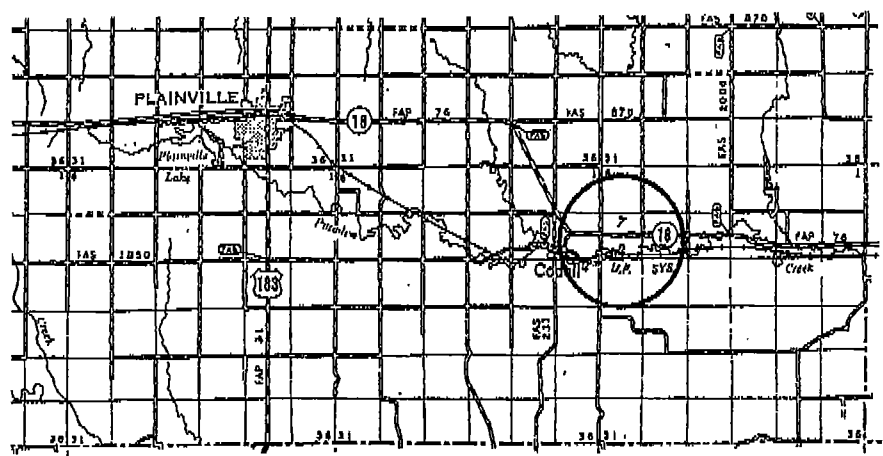
* Ingress and egress to location as shown on this plot is per usage only and may not be legally opened for public use. Contact landowner, tenant and county road department for access.



Drillsite Location
Younger #2
990'FSL 330'FWL
Ground Elevation = 1952

*Alternate Location
(50' north of Loc.)
1040'FSL 330'FWL
Ground Elevation = 1953

*Alternate Location
(100' north of Loc.)
1090'FSL 330'FWL
Ground Elevation = 1953



• Controlling data is based upon the best maps and photographs available to us and upon a regular section of land containing 640 acres.
• Approximate section lines were determined using the normal standard of care of oilfield surveyors practicing in the state of Kansas. The section corners, which establish the precise section lines, were not necessarily located, and the exact location of the drillsite location in the section is not guaranteed. Therefore, the operator assuming this service and accepting this plot and all other parties relying thereon agree to hold Central Kansas Oilfield Services, Inc., its officers and employees harmless from all losses, costs and expenses and said entities released from any liability from incidental or consequential damages.
• Elevations derived from National Geodetic Vertical Datum.

Date September 9, 2011