

Timothy G. Pierce

Petroleum Geologist

GEOLOGIST'S REPORT DRILLING TIME AND SAMPLE LOG

COMPANY R & B Oil and Gas, Inc.

ELEVATIONS

LEASE Hrencher 'A' #2

KB 1477'

FIELD McGuire-Goemann

DF _____

LOCATION SE SE SW

SEC 19 TWSP 32 S RGE 10 W

GL 1468'

COUNTY Barber STATE Kansas

CONTRACTOR Landmark Drilling Rig #6

Measurements Are All From KB

SPUD 6-07-2011 COMP 6-15-2011

RTD 4856 LTD 4854

MUD UP 3300 TYPE MUD Chemical

CASING

CONDUCTOR _____

SURFACE 8-5/8" set @ 272'

PRODUCTION 5-1/2" @ 4849'

SAMPLES SAVED FROM 2500-2800 TO RTD
 DRILLING TIME KEPT FROM 2500-2800 TO RTD
 SAMPLES EXAMINED FROM 2500-2800 TO RTD

ELECTRICAL SURVEYS
 DIL - CN/CD
 (Log Tech)

GEOLOGICAL SUPERVISION FROM 2450 TO RTD
 GEOLOGIST ON WELL Tim Pierce

FORMATION TOPS

ELECTRIC LOG

SAMPLE

Onaga Sh. 2528 (-1051) 2529 (-1052)

Wabunsee 2574 (-1097) 2579 (-1102)

Heebner Sh. 3547 (-2070) 3549 (-2072)

Lansing 3730 (-2253) 3729 (-2252)

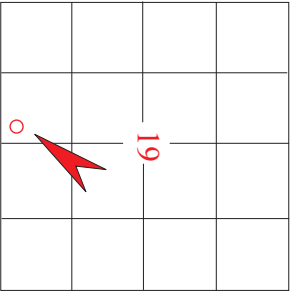
Stark Sh. 4149 (-2672) 4154 (-2677)

Cherokee Sh. 4373 (-2896) 4379 (-2902)

Mississippi 4427 (-2950) 4419 (-2942)

Viola 4706 (-3229) 4706 (-3229)

Simpson 4789 (-3312) 4792 (-3315)



API# 15-007-23,709

REMARKS DST results indicate a productive zone in the Viola Dolo from 4707'-4712'

Samples and electric logs indicate productive zones in the Mississippi from 4458'-4503' and 4426'-4442'

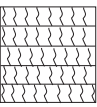
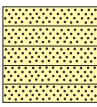
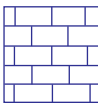
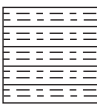

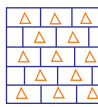
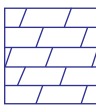
The Cherokee sand from 4394'-4403' should be productive as well as the Marmaton (Pawnee LS) from 4327'-4332'


There were no other zones of interest indicated by samples or electric logs

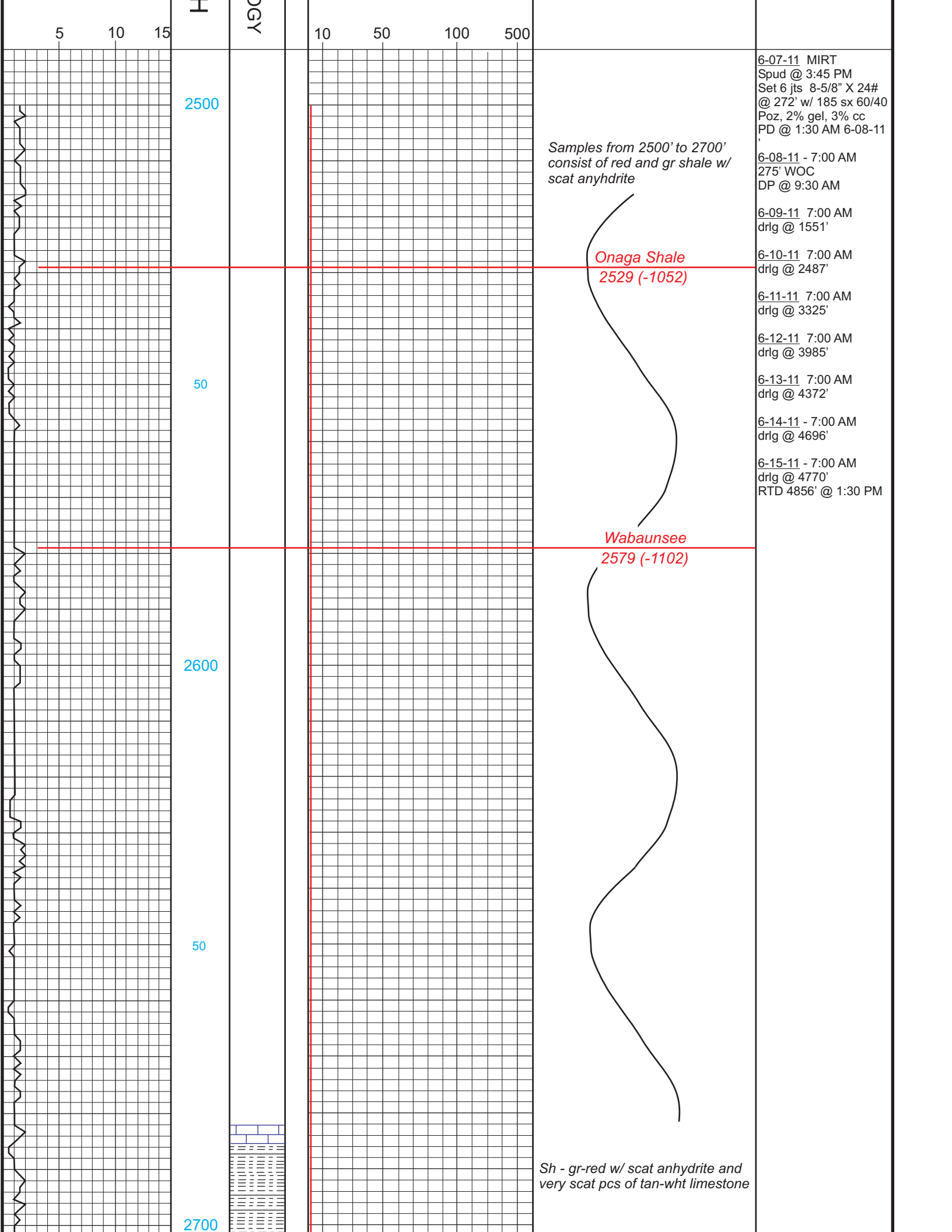
* Extractor motor siezed up therefore no gas readings were available

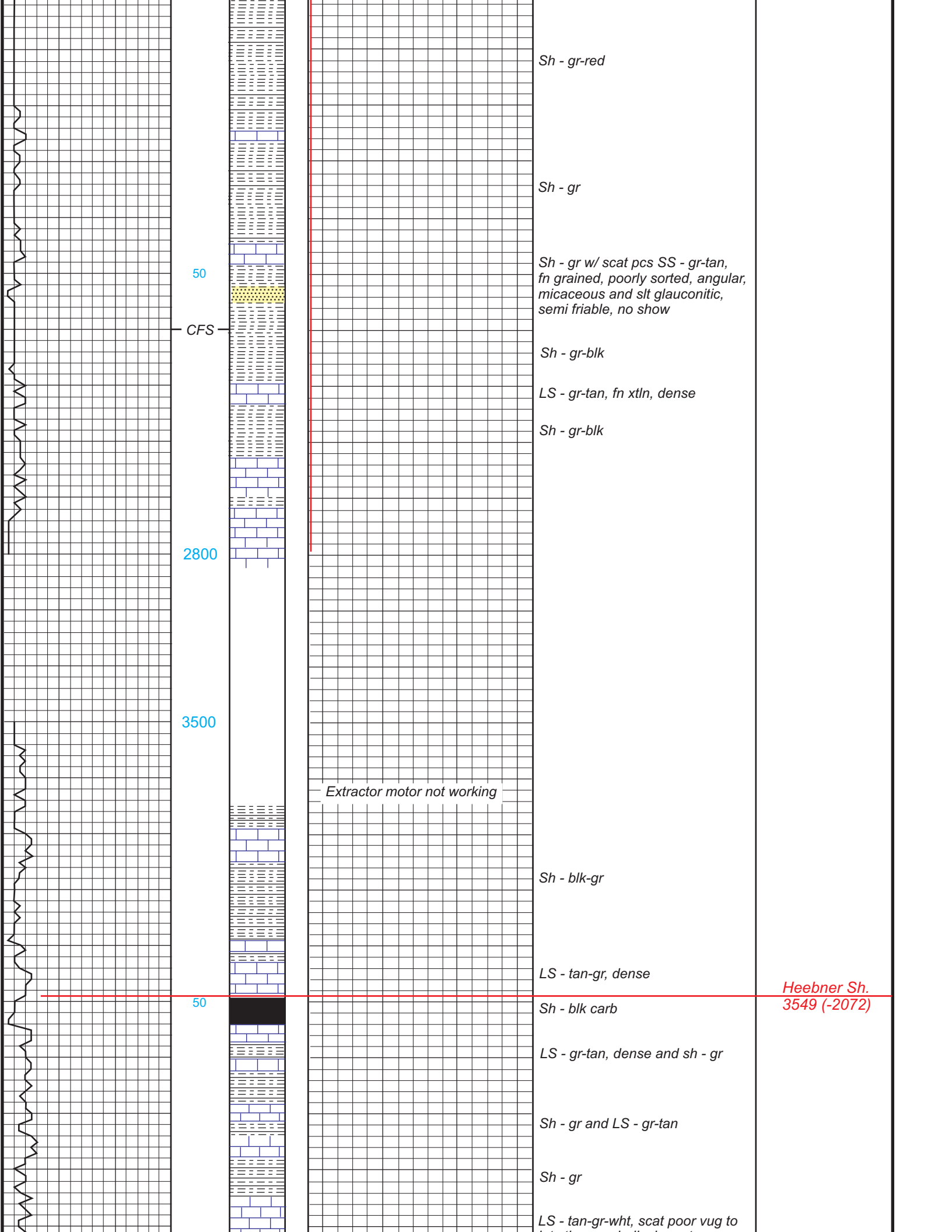
Timothy G. Pierce

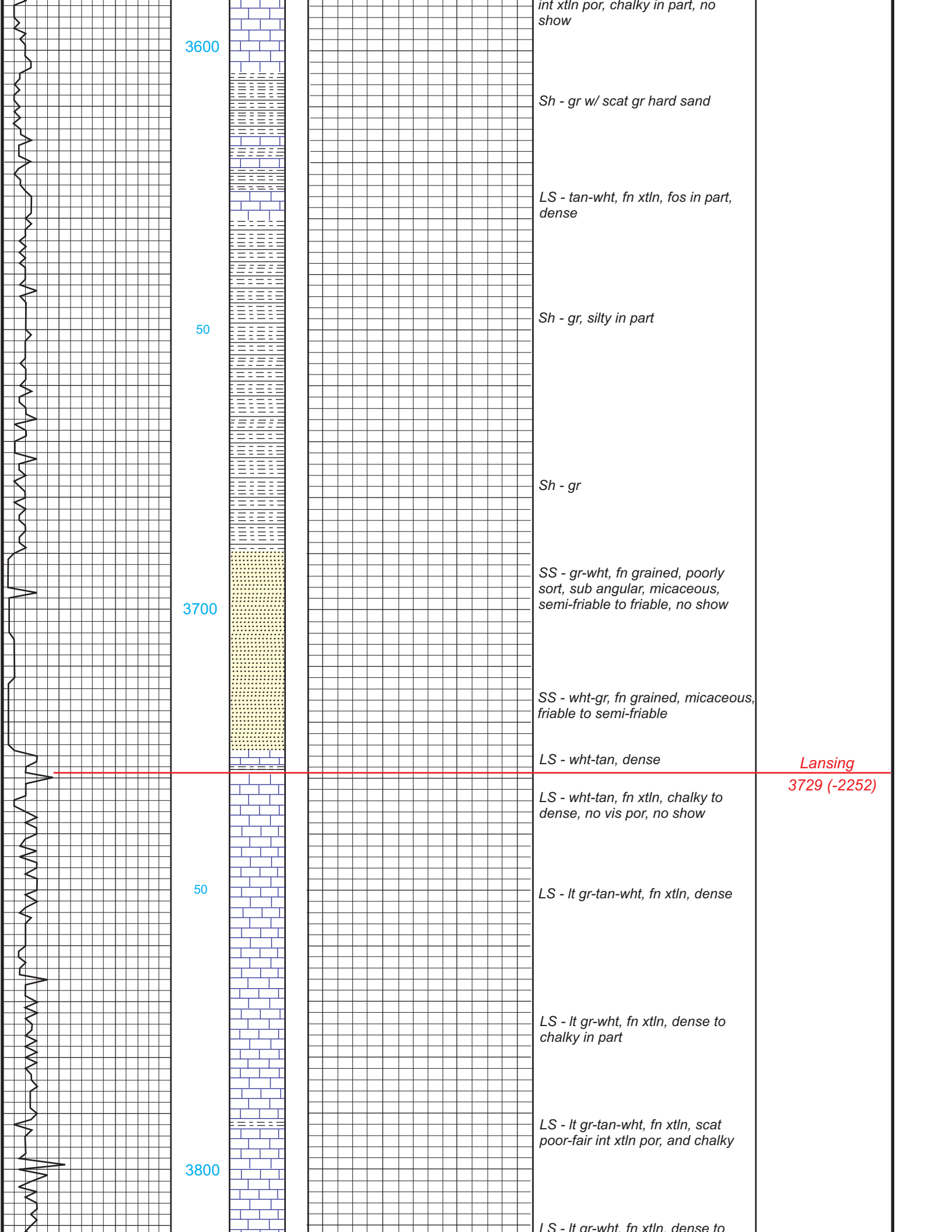
LEGEND

							
Anhydrite	Sandstone	Limestone	Shale	Carb Sh	Cherty LS	Chert	Dolomite

DRILLING TIME IN MINUTES PER FOOT Rate of Penetration Decreases 	DEPTH	LITHOLOG	GAS SCALE	SAMPLE DESCRIPTION	REMARKS
---	-------	----------	-----------	--------------------	---------







int xtln por, chalky in part, no show

3600

Sh - gr w/ scat gr hard sand

LS - tan-wht, fn xtln, fos in part, dense

50

Sh - gr, silty in part

Sh - gr

3700

SS - gr-wht, fn grained, poorly sort, sub angular, micaceous, semi-friable to friable, no show

SS - wht-gr, fn grained, micaceous, friable to semi-friable

LS - wht-tan, dense

Lansing
3729 (-2252)

LS - wht-tan, fn xtln, chalky to dense, no vis por, no show

50

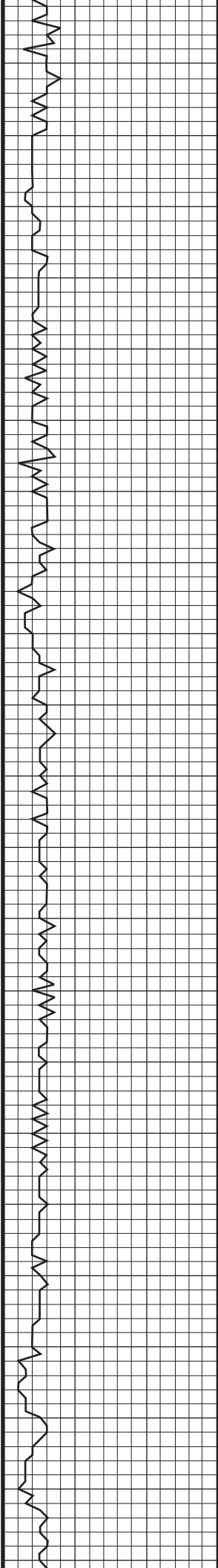
LS - lt gr-tan-wht, fn xtln, dense

LS - lt gr-wht, fn xtln, dense to chalky in part

3800

LS - lt gr-tan-wht, fn xtln, scat poor-fair int xtln por, and chalky

LS - lt gr-wht, fn xtln, dense to



50
Vis 50
Wt. 9.1

3900

50

4000

LS - gr - wht, fn xtlr, dense to
chalky

Sh - gr-blk

LS - gr-wht, fn xtlr, dense to
chalky in part

LS - gr-tan-wht, fn xtlr, dense
w/ sh - gr-blk

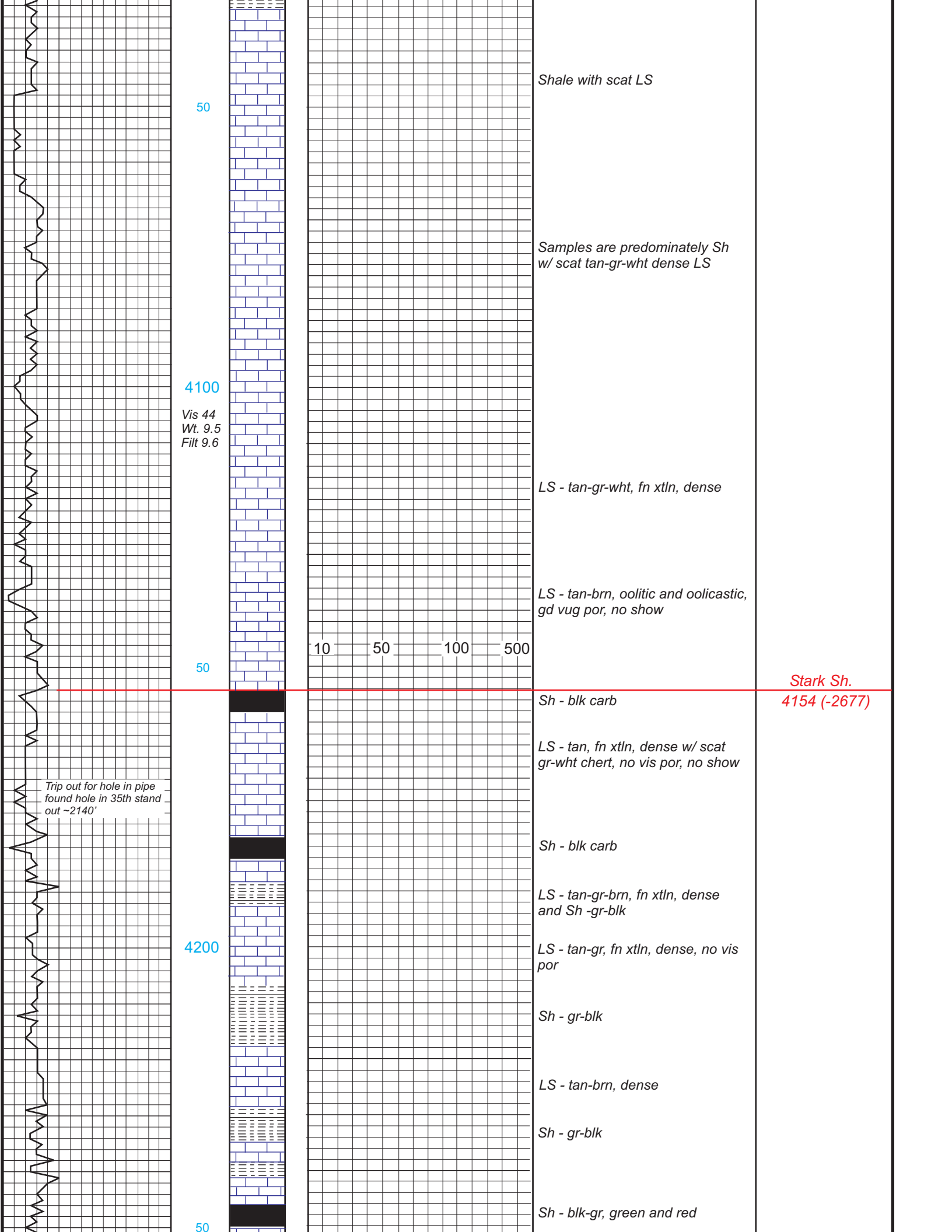
LS - gr-tan-wht, dense to slt
chalky, scat poor int xtlr por

LS - gr-wht, dense to chalky

LS - gr-tan, dense

LS - gr-tan-wht, dense and
Sh -gr-blk

Samples are very poor, consisting
of 90% shale, no visible sample
of porosity zone apparent



50

Shale with scat LS

Samples are predominately Sh w/ scat tan-gr-wht dense LS

4100

Vis 44
Wt. 9.5
Filt 9.6

LS - tan-gr-wht, fn xtln, dense

LS - tan-brn, oolitic and oolitic, gd vug por, no show

50

10 50 100 500

Stark Sh.
4154 (-2677)

Sh - blk carb

LS - tan, fn xtln, dense w/ scat gr-wht chert, no vis por, no show

Trip out for hole in pipe found hole in 35th stand out ~2140'

Sh - blk carb

LS - tan-gr-brn, fn xtln, dense and Sh -gr-blk

4200

LS - tan-gr, fn xtln, dense, no vis por

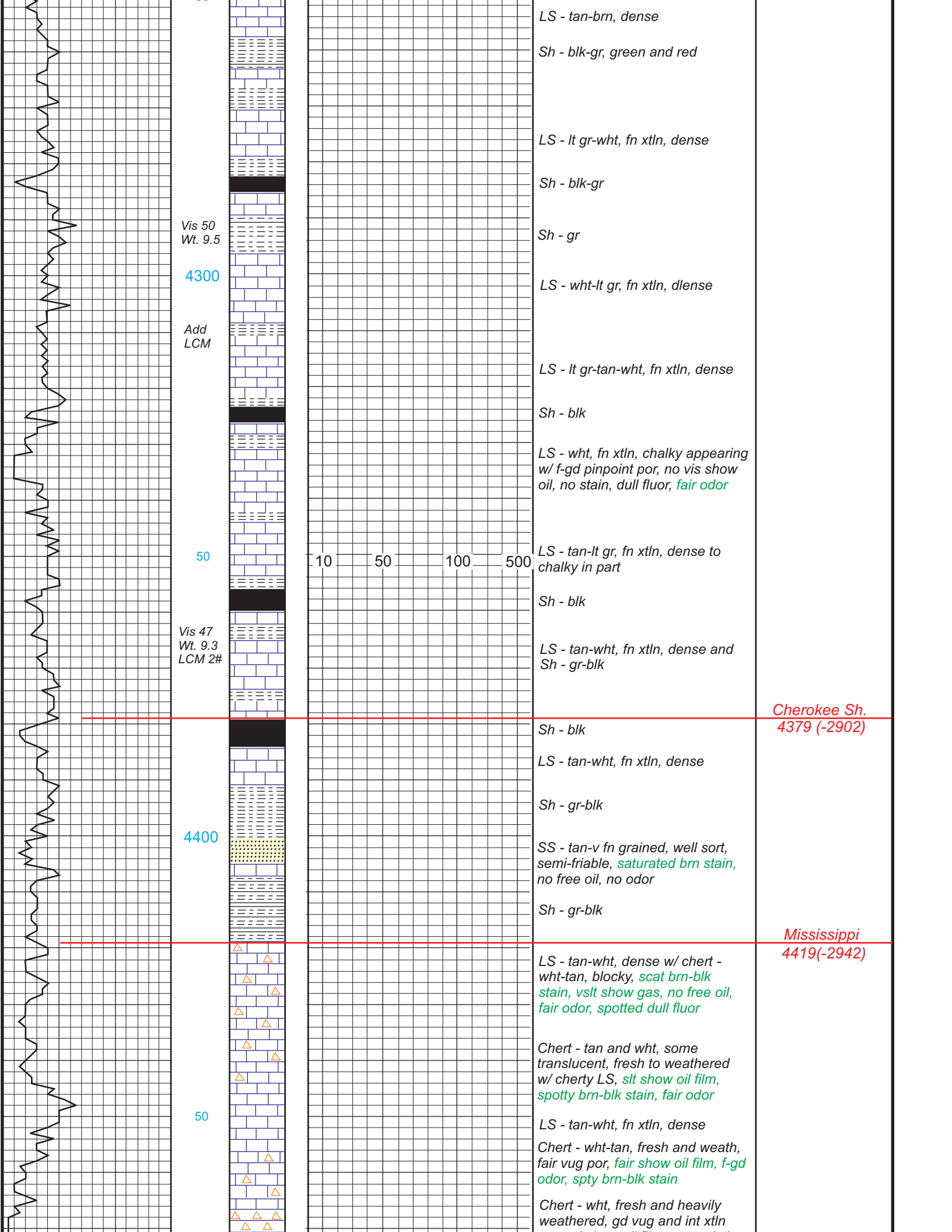
Sh - gr-blk

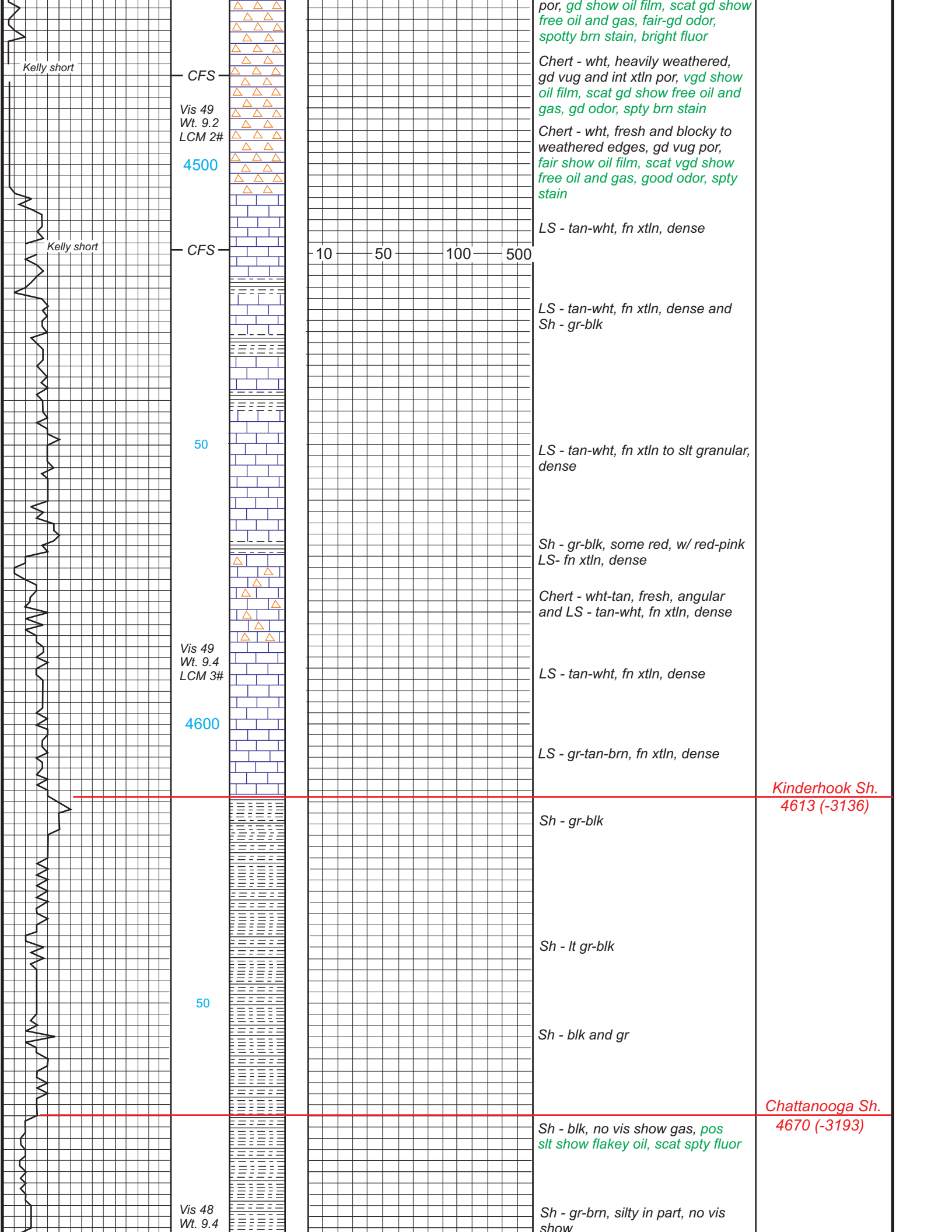
LS - tan-brn, dense

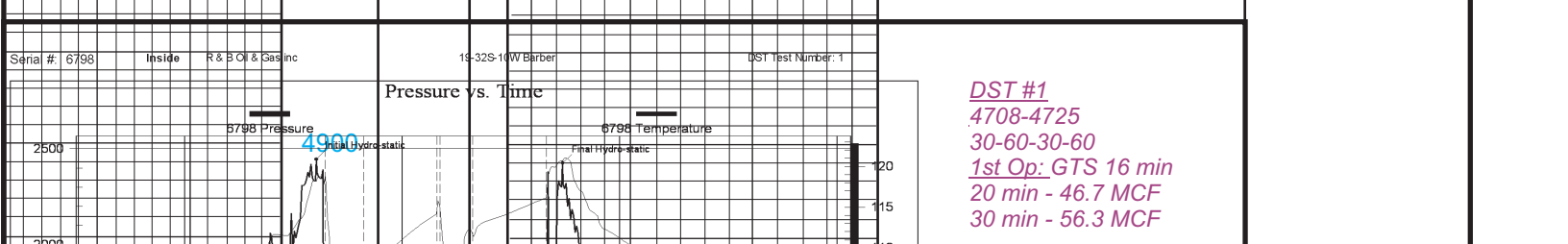
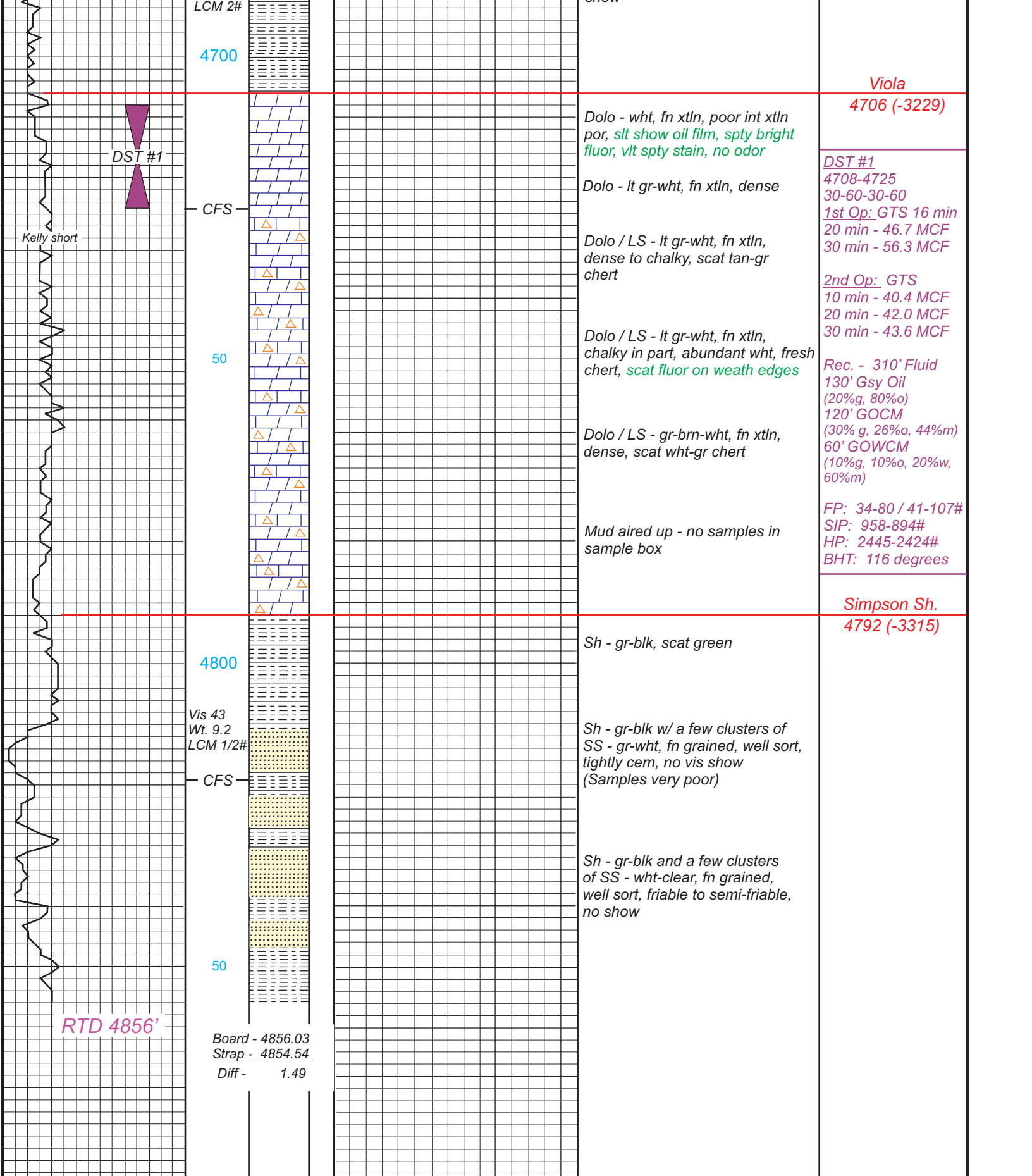
Sh - gr-blk

50

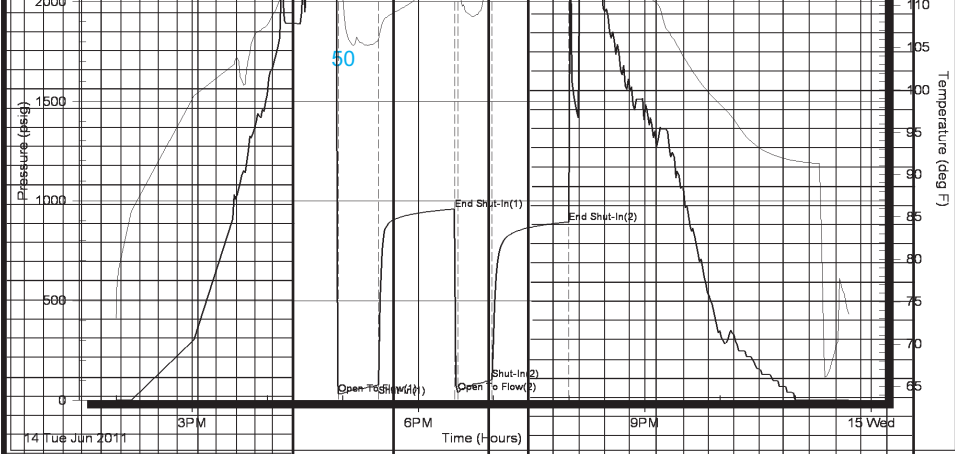
Sh - blk-gr, green and red







DST #1
 4708-4725
 30-60-30-60
 1st Op: GTS 16 min
 20 min - 46.7 MCF
 30 min - 56.3 MCF



2nd Op: GTS
 10 min - 40.4 MCF
 20 min - 42.0 MCF
 30 min - 43.6 MCF

Rec. - 310' Fluid
 130' Gsy Oil
 (20%g, 80%o)
 120' GOCM
 (30% g, 26%o, 44%m)
 60' GOWCM
 (10%g, 10%o, 20%w,
 60%m)

FP: 34-80 / 41-107#
 SIP: 958-894#
 HP: 2445-2424#
 BHT: 116 degrees

4900

