



Woolsey Operating Company, LLC

Scale 1:240 (5"=100') Imperial

Measured Depth Log

Well Name: Vogel #3
Location: NW SE SW SW
License Number: API: 15-007-23706-00-00
Spud Date: May 14, 2011
Surface Coordinates: 515' FSL & 690' FWL Section 30-Twp 33 South - Rge 10 West
Traffas South Pool
Bottom Hole Vertical Hole
Coordinates:
Ground Elevation (ft): 1472
Logged Interval (ft): 4000 To: RTD
Formation: McLish Shale
Type of Drilling Fluid: Chemical Mud, Displace at 3400'
K.B. Elevation (ft): 1481
Total Depth (ft): 5130
Region: Barber County, Kansas
Drilling Completed: May 22, 2011
Printed by WellSight Log Viewer from WellSight Systems 1-800-447-1534 www.WellSight.com

OPERATOR

Company: Woolsey Operating Company, LLC
Address: 125 N. Market, Suite 1000
Wichita, KS 67202

GEOLOGIST

Name: W. Scott Alberg
Company: Alberg Petroleum, LLC
Address: 609 Meadowlark Lane
Pratt, Kansas 67124

FORMATION TOPS

	SAMPLE TOPS	LOG TOPS
HUSHPUCKNEY SHALE	4373(-2892)	4373(-2892)
B/KC	4429(-2948)	4429(-2948)
PAWNEE	4518(-3037)	4518(-3037)
CHEROKEE GROUP	4567(-3086)	4567(-3086)
MISSISSIPPIAN	4590(-3109)	4588(-3107)
KINDERHOOK SHALE	4814(-3333)	4818(-3337)
WOODFORD SHALE	4890(-3409)	4895(-3114)
VIOLA	4932(-3451)	4937(-3456)
SIMPSON GROUP	5023(-3542)	5026(-3545)
SIMPSON SAND	5051(-3570)	5056(-3575)
MCLISH SHALE	5084(-3603)	5083(-3602)
RTD	5130(-3649)	
LTD		5130(-3649)

COMMENTS

Surface Casing: Set 5 joints 10 3/4" at 215' with 240 sxs Class A, 2% gel, 3% cc, plug down at 1:00 am on May 15, 2011. Cement did Circulate.

Production Casing: Ran 5 1/2" Casing.

Deviation Surveys: 1/4- 220', 1/2 - 1261', 3/4 - 1765', 3/4 - 2269', 1/2 - 2773', 1-3246', 1-3813', 1 3939', 1- 4096', 3/4 - 4656', 1/4 - 5130'

Contractor Bit Record:

1- 14 3/4" out at 220'.

2- 7 7/8" out at 5130'

Gas Detector: Woolsey Operating Company, Trailer #2

Mud System: Mud Co, Aaron Rush, Brad Bortz, Engineers

DSTs: None

Logged by Superior Well Services.

LTD - 5130'

DSTs

No DST's Taken

CREWS

H2 Drilling Rig #3

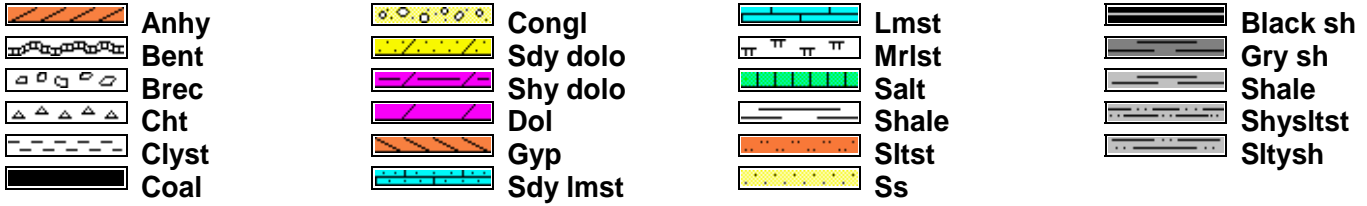
Tool Pusher - Randy Smith

Drillers - Gary Axtell

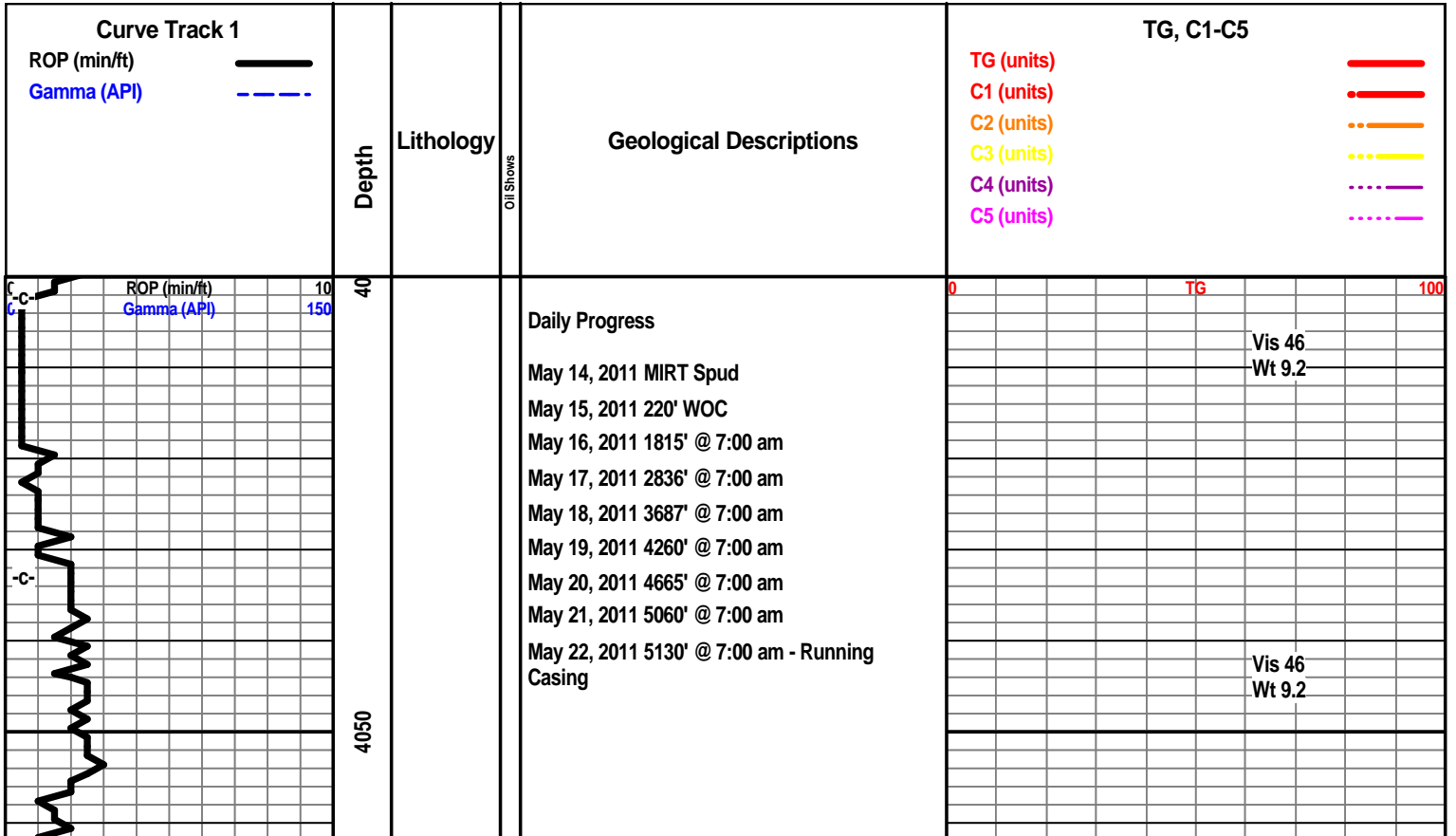
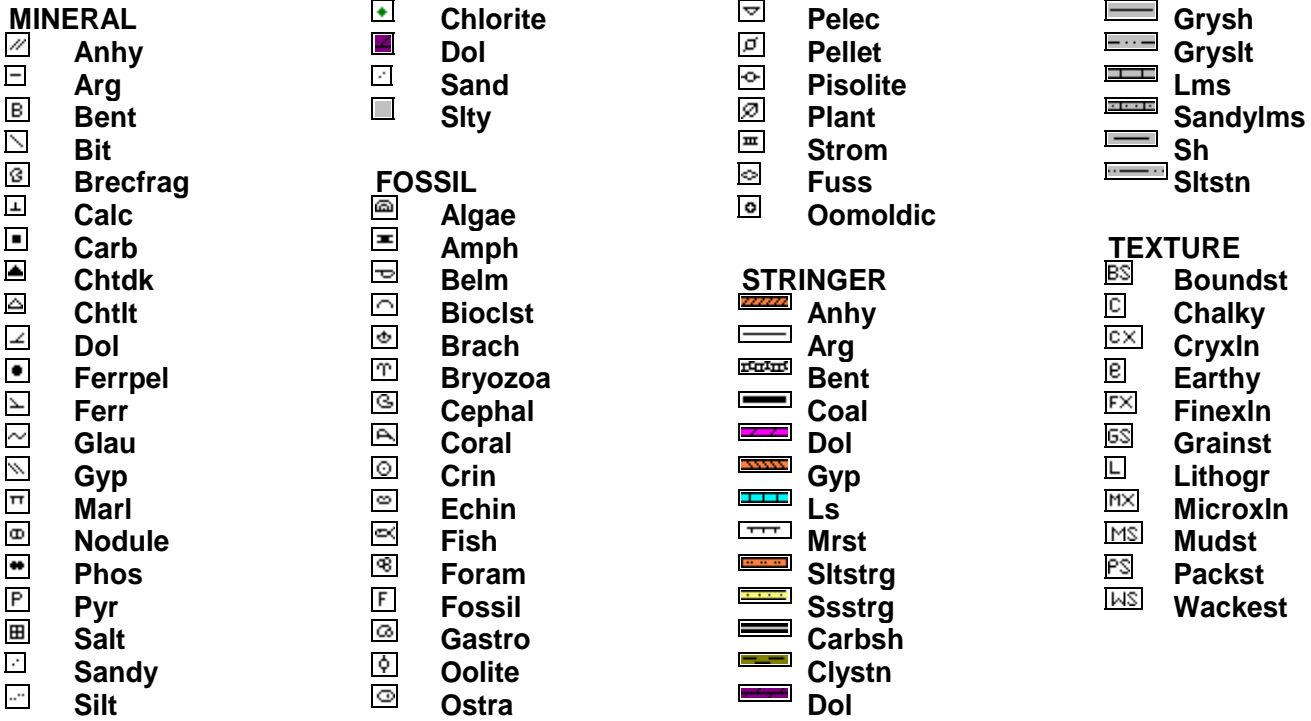
Luis Marquez

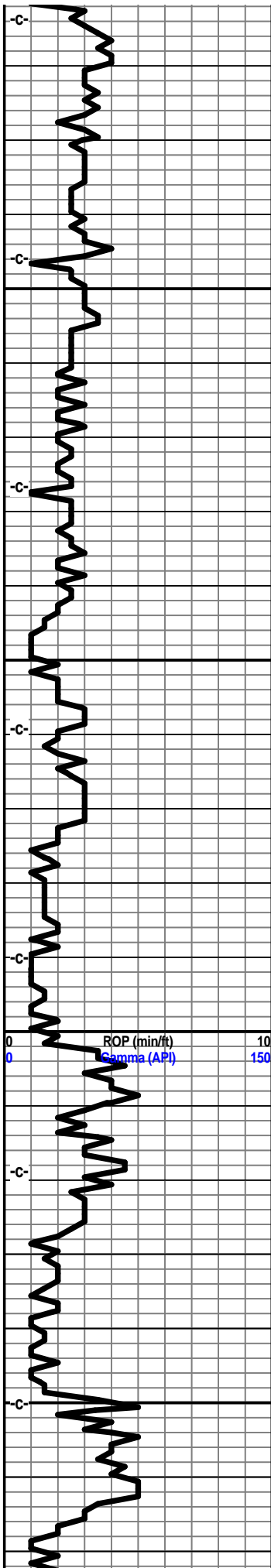
Cain Charles

ROCK TYPES



ACCESSORIES





4100

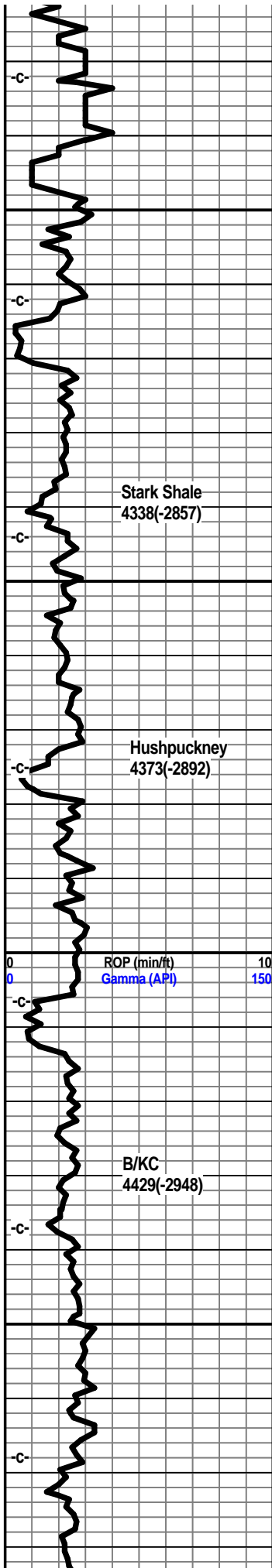
4150

4200

4250

	Vis 47 Wt 9.2+	
	Vis 53 Wt 9.3	
	Survey at 4096' 1 degree	
	Vis 54 Wt 9.2	
	Vis 51 Wt 9.1	
	Vis 50 Wt 9.2	
	Vis 50 Wt 9.2	
0	TG	100
	Vis 42 Wt 9.3	
	Vis 51 Wt 9.2	
	Geologist on Location 5-19-2011 4253' @ 6:00 am	
	Vis 48 Wt 9.2+	
	Turn on Gas Detector	





4300

4350

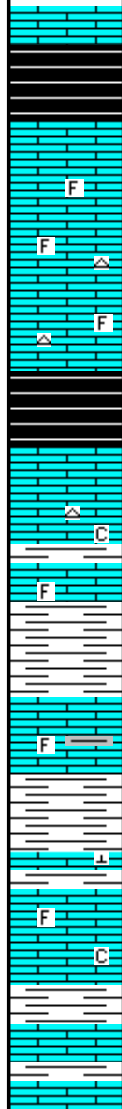
4400

4450

Stark Shale
4338(-2857)

Hushpuckney
4373(-2892)

B/KC
4429(-2948)



Shale, Grey-black, carb.

Limestone, grey-white to tan, fmxln, traces of foss. porosity, slightly chalky in part, traces of tan to grey-white cherts.

Shale, grey-black, carb.

Limestone, grey-white, xln, dense, trace of foss., tan chert, subchalky in part.

Shale, light grey.

Limestone, tan, tan-brown xln, dense, slightly foss.

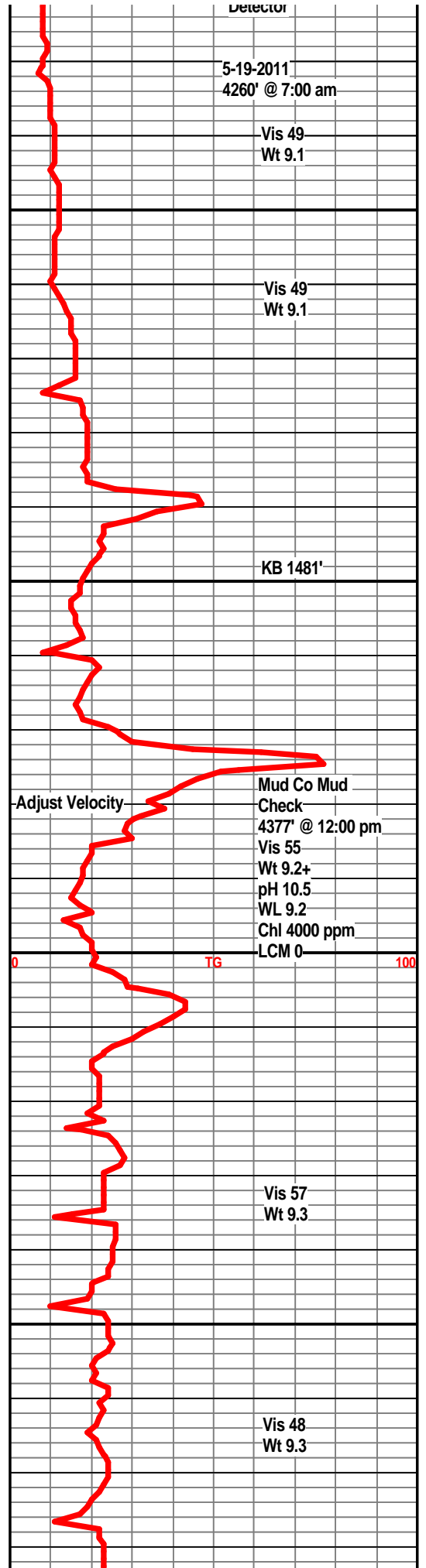
Shale, lt grey, some light green.

Limestone, grey-white, some pale green, xln, dense, shaley in part.

Shale, light grey, green, calcitic.

Limestone, tan-white, cream, xln, slightly foss, trace subchalky.

Shale, grey, light grey.



Detector

5-19-2011
4260' @ 7:00 am

Vis 49
Wt 9.1

Vis 49
Wt 9.1

KB 1481'

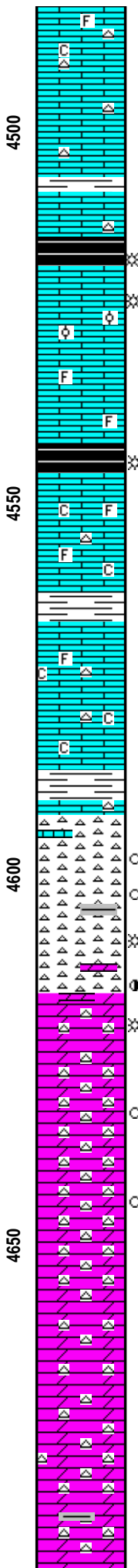
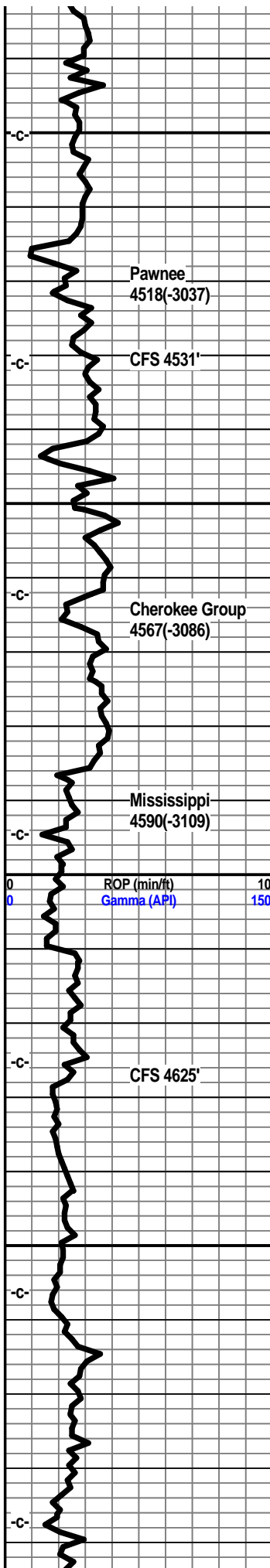
Adjust Velocity

Mud Co Mud
Check
4377' @ 12:00 pm
Vis 55
Wt 9.2+
pH 10.5
WL 9.2
Chl 4000 ppm
LCM 0

TG

Vis 57
Wt 9.3

Vis 48
Wt 9.3



Limestone, cream, tan-white, xln, subchalky, traces of tan chert, foss. in part.

Limestone, cream-tan, fmxln, traces of foss., tan cherts, dense, trace of shale stringer.

Shale, grey-black, carb.

Limestone, cream to tan-white, fxln, foss., trace foss porosity, slightly oolitic, some inter oolitic porosity, traces of crystalline porosity, very slight trace of gas, very faint odor, no visible shows of free oil, dull scattered fluor.

Shale, grey-black

Limestone, grey-white, tan, xln, dense, subchalky, slightly foss in part, trace of grey chert.

Shale, grey.

Limestone, tan-white, cream, xln, foss, subchalky, traces of tan-grey chert.

Limestone, grey-white, xln, subchalky, foss., tan cherts.

Shale, lt grey, traces of white to grey fn grained sand clusters, no visible shows.

Limestone, tan, grey-white, xln, dense, slightly cherty.

Chert, off-white to grey-white, some weathered with pp porosity, light brown to dark scattered staining, very faint odor, no visible free oil, very dull fluor.

Chert, bone-white to off-white, some sharp, mostly weathered with light scattered staining, scattered pp porosity, trace show of gas, faint odor, some grey shales interbedded, traces of grey-white dolo, scattered dull fluor.

Dolo, off-white, xln, fn grained, abundant weathered cherts, pp porosity, faint odor, scattered light staining, dull fluor., trace gas,

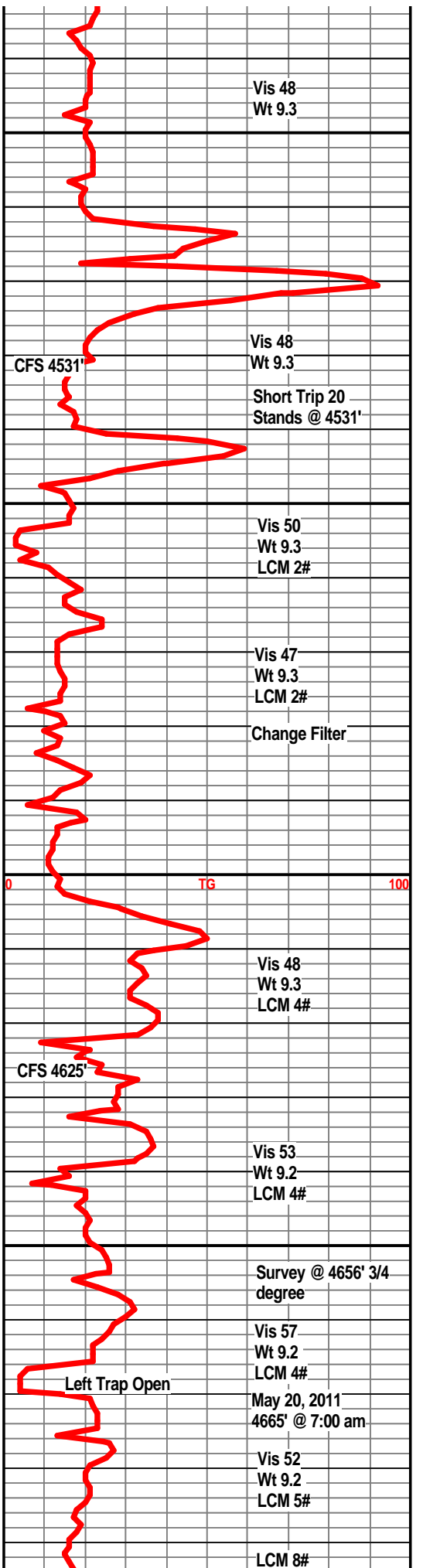
Dolo, off-white to cream, xln, very cherty, weathered cherts, pp porosity, light brown to dark staining, trace show of gas, some scummy oil, faint odor, dull spotted fluor.

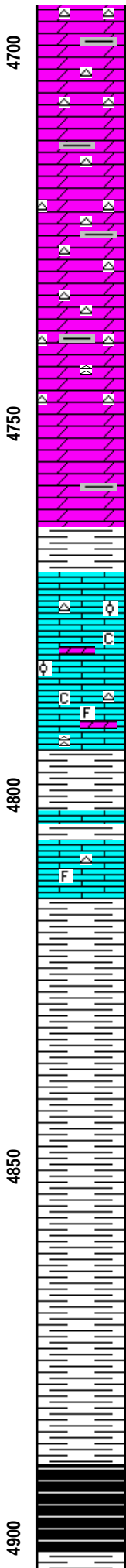
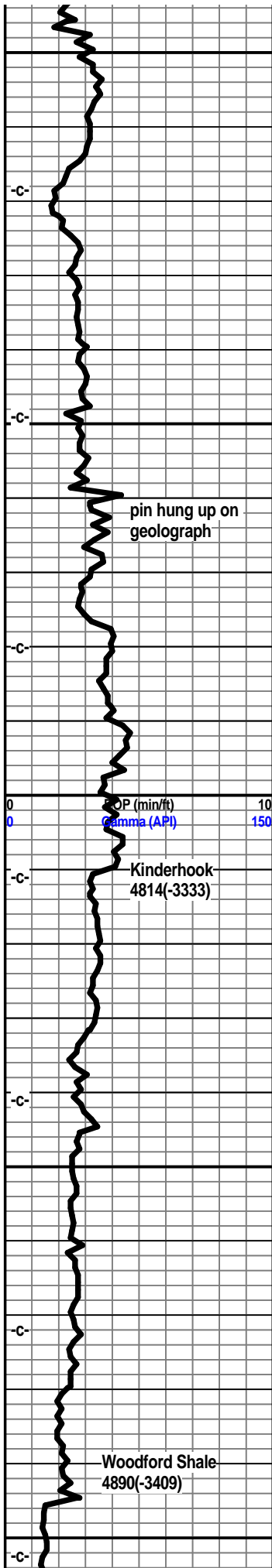
Dolo, off-white, xln, abundant cherts, mostly weathered with scattered pp porosity, fair staining, faint odor, very faint show light oil and gas. dull scattered fluor.

Dolo, tan-white, xln, fn grained, weathered cherts, light brown staining, some pp porosity, very faint odor.

Dolo, tan-white to grey-white, xln fn grained weathered cherts, some sharp trans to white, traces of pp porosity, scattered light stain, dull fluor.

Dolo, grey-white, xln, fn grained, weathered and fresh ceherts, slight staining, scattered splintery grey-green shales.





Dolo, grey-white, xln, fn grained, abundant cherts, some weathered with light brown staining, fresh, bone white to grey, no visible shows, no odor.

Dolo, grey-white, fnxln, cherty, some grey-green splintery shales.

Dolo, grey-white, fxl, traces of tan-grey chert, mostly weathered to bone white chert.

Dolo, grey-white, xln, fn grained, grey to tan sharp cherts, few weathered, some grey-green splintery shales.

Dolo, light grey, xln fn grained, grey-white cherts, some grey-green shales.

Shale, light green to grey.

Limestone, tan-white, cream, xln, oolitic in part, poor porosity, subchalky, white to grey-white cherts, some grey-white dolo streaks.

Shale, grey, some rust to brick red.

Limestone, fxl, dense, foss, subchalky.

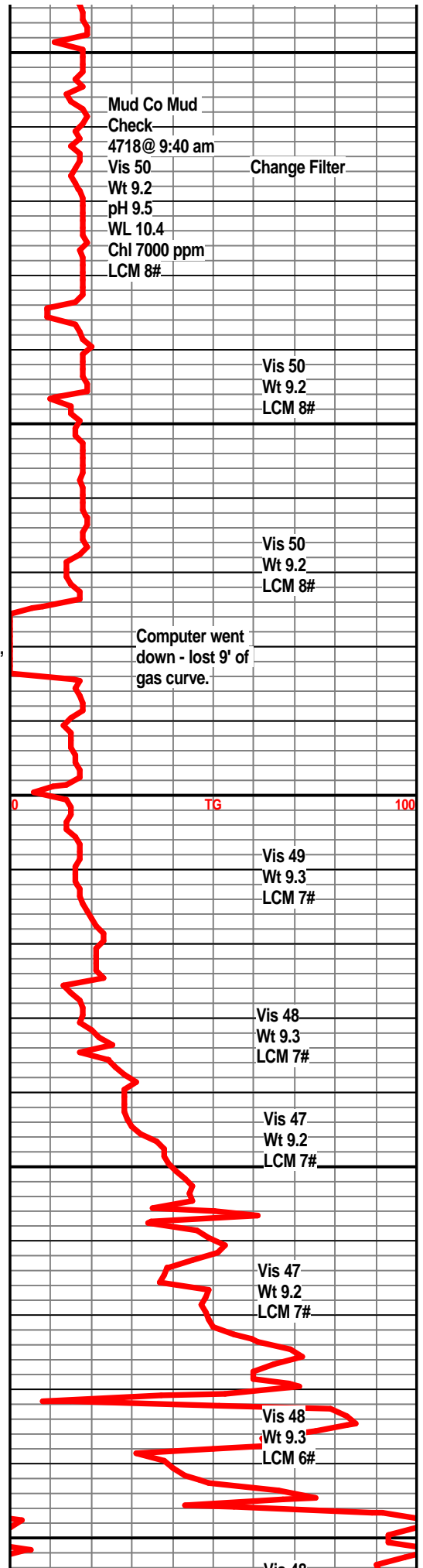
Shale, dark grey-green, firm, trace of pyrite.

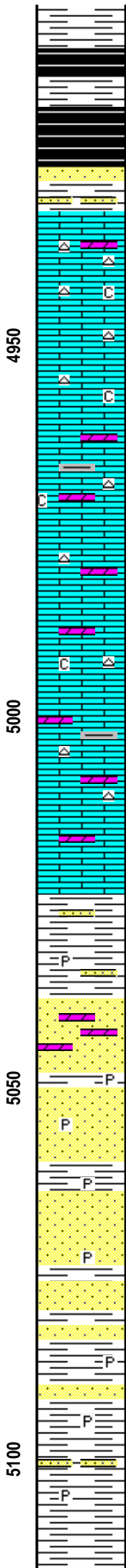
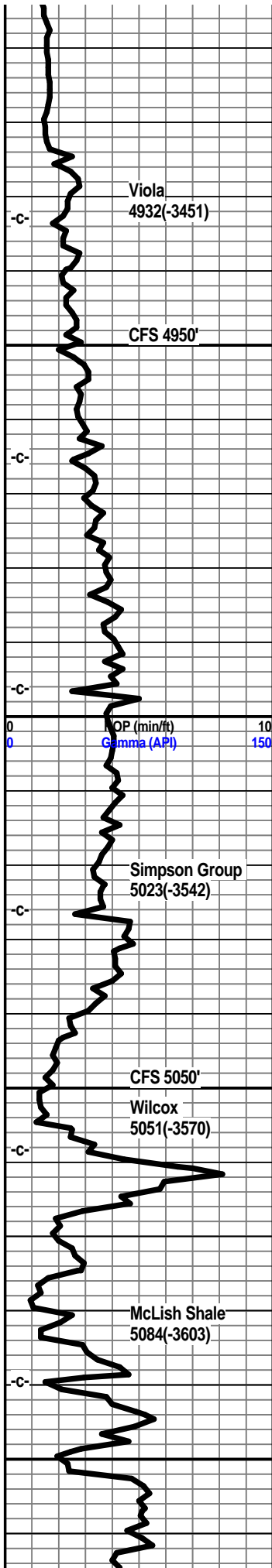
Shale, dark grey-green.

Shale, dark grey, slightly carb.

Shale, dark grey, carb, traces of pyrite.

Shale, grey-black, carb.





Shale, grey-black, coffe brown, carb

Shale, grey-black, coffee brown, carb.

Sandstone, grey to light brown, fn grained, well sorted, dirty, well cemented, some friable, no odor, very slight show of oil under UV, pyritic, shaley.

Limestone, cream-white, xln, xln porosity, subchalky, traces of tan-white chert, sharp, slightly dolo in part, questionable light staining, no visible shows, dull fluor.

Limestone, cream-white, xln, traces of xln porosity, scattered tan chert, slight trace oil under UV, no odor, subchalky in part.

Limestone, tan-white, grey-white, xln, slightly dolo, tan to tan-grey cherts, traces of xln porosity, chalky in part, no visible shows.

Limestone, tan-white, xln fnxln, dolo in part, xln porosity, chalky, tan sharp cherts, no visible shows.

Limestone, tan, fnxlk, fine grained, dolo in part, tan sharp cherts, subchalky in part.

Limestone, tan-white, xln, dolo, xln porsity, subchalky, traces of green shales, no vis shows.

Limestone, tan-white, xln, granular texture, dolomitic, tan cherts, traces of green shale.

Shale, green to pale green, firm, trace of pyrite, slightly sandy in part.

Sandstone, clear to grey-white, dolomitic, fair sorting, well cemented, some friable, trace questionable light stain, SA to SR, no odor, no fluor.

Sandstone, clear to white, SA to SR , friable in part, fair sorting, traces of pyrite, no odor no visible shows, no gas kick

Sandstone, grey-white, SA to SR well cemented, slightly friable, some dolo streaks, traces of shale, pyrtie.

Sandstone, white, to clear, well sorted, friable in part, trace gil, very slight show of oil when crushed, slight odor after crushing, no fluor, very slight increase in gas background.

Shale, green, firm.

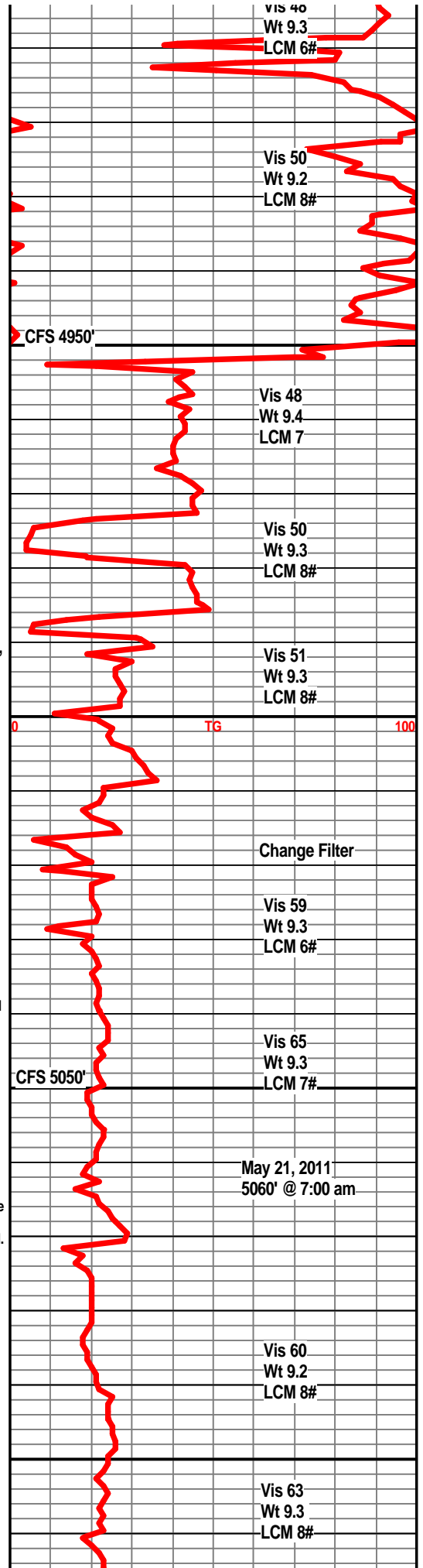
Sandstone, grey-white to white, SR to SA, friable in part, gil, trace pyrite, some shale stringers, few dolo, well cemented.

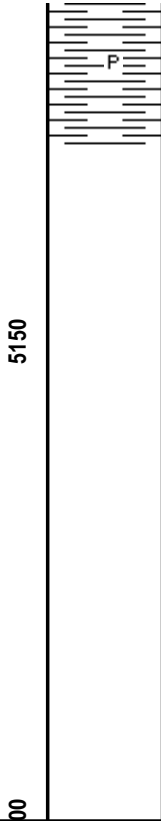
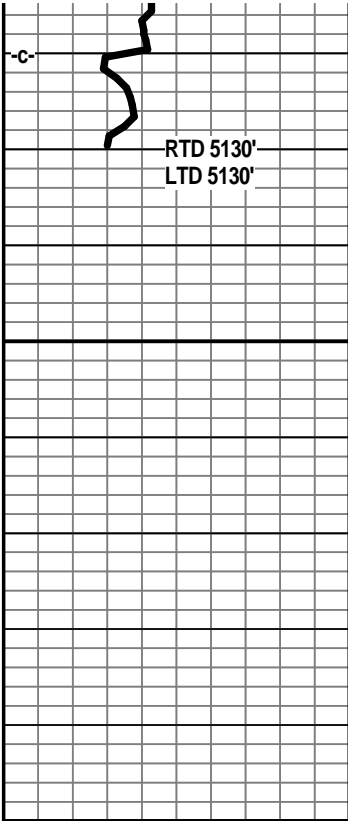
Shale, dark green, firm.

Sandstone, grey-white, fair sorting, SA to SR, well cemented, slightly pyritic.

Shale, green, dark green, firm, traces of pyrite, sand stringers..

Shale, green, grey, firm.





Shale, green-grey, firm, traces of pyrite.

