

# GEOLOGIST'S REPORT

DRILLING TIME AND SAMPLE LOG

COMPANY Murphy Drilling Co., Inc. ELEVATIONS \_\_\_\_\_  
 LEASE Strickland #2-20

FIELD \_\_\_\_\_ KB 3250  
 LOCATION 2200 ELL. SEC 5 E 10 S R 10 W OF \_\_\_\_\_  
 SEC \_\_\_\_\_ TWP \_\_\_\_\_ RGE \_\_\_\_\_

COUNTY Madison STATE KS MEASURED BY AI 11  
 CONTRACTOR Murphy Drilling Co., Inc. FROM \_\_\_\_\_  
 SPUD 7/21/11 COMP 7/15/11 PRODUCT ON 5/10/11

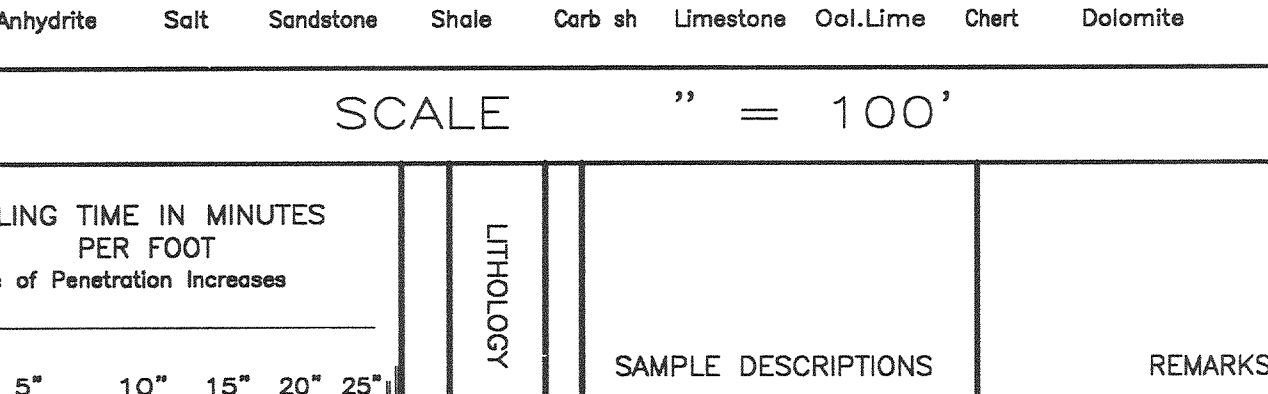
RID 4900 LTD 4900 ELECTRICAL SURVEYS  
 MUD UP 5500 TYPE MUD Water Prod. Simul. Miro temp den

SAMPLES SAVED FROM 3800 TO 4900  
 DRILLING TIME KEPT FROM \_\_\_\_\_ TO \_\_\_\_\_  
 SAMPLES EXAMINED FROM 3800 TO \_\_\_\_\_  
 GEOLOGICAL SUPERVISION FROM 3800 TO \_\_\_\_\_  
 GEOLOGIST ON WELL Richard R. Kibler

FORMATION TOPS	LOGS	SAMPLES
Cherokee	2751	4909
Cherokee	3000	450
Cherokee	4125	403
Cherokee	4165	415
Cherokee	4400	4196
Cherokee	4434	4583
Cherokee	4469	4117
Cherokee	4487	4183
Cherokee	4493	4903

REMARKS

## LEGEND



SCALE " = 100'

DEPTH	DRILLING TIME IN MINUTES PER FOOT Rate of Penetration Increases	LITHOLOGY	SAMPLE DESCRIPTIONS	REMARKS
3800	10		15' tan to light gray sh	
3900	10		15' tan to light gray sh	
4000	10		15' tan to light gray sh	
4100	10		15' tan to light gray sh	
4200	10		15' tan to light gray sh	
4300	10		15' tan to light gray sh	
4400	10		15' tan to light gray sh	
4500	10		15' tan to light gray sh	
4600	10		15' tan to light gray sh	
4700	10		15' tan to light gray sh	
4800	10		15' tan to light gray sh	
4900	10		15' tan to light gray sh	

**DST #1**  
 4132-4166  
 30'-60'-60'-90'  
 1<sup>st</sup> open - 1"  
 2<sup>nd</sup> open - 1"  
 Rec:  
 62' COMML  
 530' 55' 80'  
 IFF 24-28 IMP 2061  
 IFF 33-49 IFF 1954  
 IFF 1241 IFF 1954  
 FFFP 1230

**DST #2**  
 4197-4210  
 30'-60'-60'-90'  
 1<sup>st</sup> open - BOB 1 1/2"  
 2<sup>nd</sup> open - BOB 2"  
 Rec:  
 279' COMML  
 80'  
 620' 20' 80'  
 1271' 60'  
 2170' 10'  
 IFF 149-154  
 IFF 666-1030 IMP 2170  
 IFF 1203 IFF 1985  
 FFFP 1207

**DST #3**  
 4213-4266  
 30'-60'-60'-90'  
 1<sup>st</sup> open - BOB 1"  
 2<sup>nd</sup> open - BOB 2"  
 Rec:  
 434' MEW hand  
 310' MEW hand  
 1550' MEW  
 2274' tot  
 IFF 197-692  
 IFF 770-1097 IMP 2184  
 IFF 1235 IFF 2010  
 FFFP 1242

**DST #4**  
 4309-4392  
 30'-60'-60'-90'  
 1<sup>st</sup> open - BOB 22"  
 2<sup>nd</sup> open - BOB 12"  
 Rec:  
 196' 60' 10 80'  
 124' COM 10 80'  
 124' COM 10 80'  
 124' tot  
 IFF 37-111 IMP 2225  
 IFF 127-180 IFF 2042  
 IFF 1224 IFF 1985  
 FFFP 1207

**DST #5**  
 4374-4428  
 30'-60'-60'-90'  
 1<sup>st</sup> open - BOB 2"  
 2<sup>nd</sup> open - BOB 3"  
 Rec:  
 1077' 60' 20 80'  
 1000' 25 80'  
 2086 2080  
 124' MEW  
 2201' tot  
 IFF 163-524 IMP 2166  
 IFF 566-903 IFF 2061  
 IFF 1261 IFF 1985  
 FFFP 457

**DST #6**  
 4600-4635  
 30'-60'-60'-90'  
 1<sup>st</sup> open - BOB 3"  
 2<sup>nd</sup> open - BOB 4"  
 Rec:  
 1448' COM  
 558' 60' 20 80'  
 124' MEW 10 80'  
 682' tot  
 IFF 81-197 IMP 2170  
 IFF 214-307 IFF 2181  
 IFF 1419 IFF 1985  
 FFFP 457

**DST #7**  
 4704-4748  
 30'-60'-60'-90'  
 1<sup>st</sup> open - 7"  
 2<sup>nd</sup> open - BOB 52"  
 Rec:  
 124' 60' 30 80'  
 162' COM 10 80'  
 124' tot 30 80'  
 IFF 33-52 IMP 2544  
 IFF 65-95 IFF 2544  
 IFF 211 IFF 2281  
 FFFP 394

**DST #8**  
 4803-4857  
 30'-60'-60'-90'  
 1<sup>st</sup> open - BOB 4"  
 2<sup>nd</sup> open - BOB 5"  
 Rec:  
 1077' 60' 20 80'  
 1000' 25 80'  
 2086 2080  
 124' MEW  
 2201' tot  
 IFF 163-524 IMP 2166  
 IFF 566-903 IFF 2061  
 IFF 1261 IFF 1985  
 FFFP 457

**DST #9**  
 4900-4900  
 30'-60'-60'-90'  
 1<sup>st</sup> open - BOB 4"  
 2<sup>nd</sup> open - BOB 5"  
 Rec:  
 1077' 60' 20 80'  
 1000' 25 80'  
 2086 2080  
 124' MEW  
 2201' tot  
 IFF 163-524 IMP 2166  
 IFF 566-903 IFF 2061  
 IFF 1261 IFF 1985  
 FFFP 457

COMPANY \_\_\_\_\_ LEASE \_\_\_\_\_ ELEVATION: \_\_\_\_\_  
 LOCATION \_\_\_\_\_ SEC \_\_\_\_\_ TWP \_\_\_\_\_ RNG \_\_\_\_\_  
 COUNTY \_\_\_\_\_ STATE \_\_\_\_\_