

DRILLING TIME IN MINUTES PER FOOT		DIP	
6-28-11 1920	DRILLING	38°	23' @ 231'
6-30-11 2960	DRILLING	N 88° E 1'	
7-1-11 3910	DRILLING	N 88° E 1'	
7-2-11 4160	DRILLING	N 88° E 1'	
7-3-11 4410	DRILLING	N 88° E 1'	
7-4-11 4510	DRILLING	N 88° E 1'	
7-5-11 4600	DRILLING	N 88° E 1'	
TOTAL DEPTH 4600			

Formation	Sample	Log	Depth	Formation	Sample	Log	Depth
ANHYDRITE	1922	1922	4660	-6			
HEAVY	3883	3883	4629	-5			
TORONTO	3901	3901	4117	-4			
LANSING	3926	3926	4118	-3			
STARK	4166	4166	4162	-2			
KANSAS CITY	4219	4219	1732	-1			
PAWNEE	4332	4332	1896	-22			
FORT SCOTT	4417	4417	1935	-19			
CHEROKEE SHALE	4443	4443	1959	-21			
MISS-WARSAW	4503	4503	2020	-20			
TOTAL DEPTH	4600	4600	2119	-219			

REMARKS DUE TO THE DRILL STEM TEST RESULTS AND THE F-LOG CALCULATIONS, IT WAS DECIDED TO PLUG THIS TEST WELL.

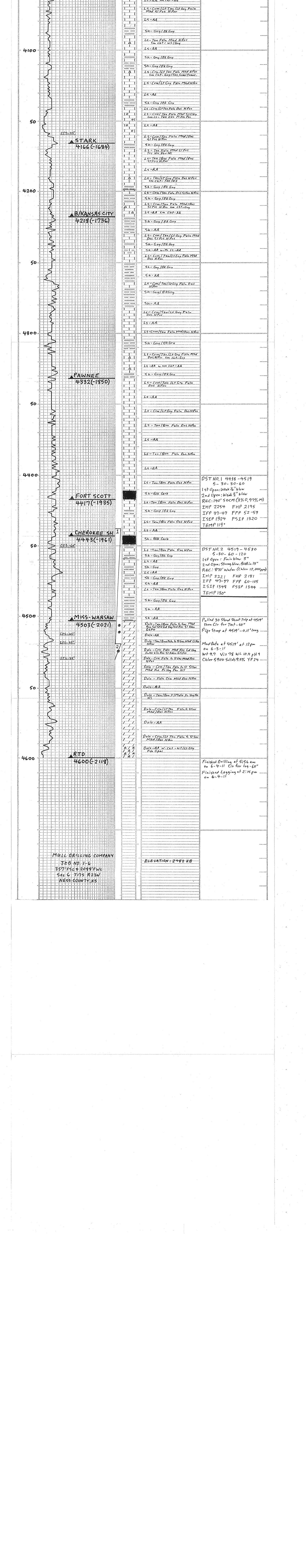
Respectfully submitted,
Mull Drilling Company

Formation	Sample	Log	Depth	Formation	Sample	Log	Depth
ANHYDRITE	1922	1922	4660	-6			
HEAVY	3883	3883	4629	-5			
TORONTO	3901	3901	4117	-4			
LANSING	3926	3926	4118	-3			
STARK	4166	4166	4162	-2			
KANSAS CITY	4219	4219	1732	-1			
PAWNEE	4332	4332	1896	-22			
FORT SCOTT	4417	4417	1935	-19			
CHEROKEE SHALE	4443	4443	1959	-21			
MISS-WARSAW	4503	4503	2020	-20			
TOTAL DEPTH	4600	4600	2119	-219			

Structure Position to: MULL DRILLING COMPANY
KLITZKE NO. 1-6 SENEWS S66 T17S R23W

LEGEND

Scale: 1" = 100'



MULL DRILLING COMPANY
JEB NO. 1-6
357 F52 + 2049 FWL
Sec 6 T17S R23W
NESS COUNTY, KS

ELEVATION: 2482 RB

Finished Drilling at 4550 am on 6-4-11
Finished Logging at 2:10 pm on 6-4-11