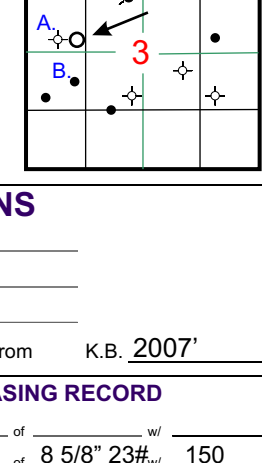


# GEOLOGICAL REPORT

## Larry A. Nicholson

COMPANY & WELL McCoy Petroleum Corp. "A" #1-3  
 LOCATION 2310 FNL 1155 FWL of Section  
 SEC 3 TWP 7S RGE 19W  
 COUNTY Rocks STATE Kansas

COMPANY **McCoy Petroleum Corporation**  
 API # **15-023-21305** FIELD **Risley**  
 LEASE **KST "A"** WELL # **1-3**  
 LOCATION **165' E SE SW NW**  
 SURVEY **2310' FSL 1155' FWL**  
 SECTION **3** TWP **7S** RGE **19W**  
 COUNTY **Rocks** STATE **Kansas**



CONTRACTOR **Murfin** Rig # **16**  
 SPUD **07/19/2011 2:15 pm** COMP **3505'**  
 RTD **3508' 7/15/2011 3:15 pm** LTD **3505'**  
 MUD UP AT **2700'+**  
 MUD TYPE **Chemical - Mud Co**

SAMPLES SAVED FROM 2800' TO TD  
 DRILLING TIME FROM 2800' TO TD  
 SAMPLES EXAMINED FROM 2800' TO TD  
 GEOLOGICAL SUPERVISION FROM 2800' TO TD  
 WELL SITE GEOLOGIST **LARRY A. NICHOLSON**

| ELEVATIONS                      |      |
|---------------------------------|------|
| K.B.                            | 2007 |
| D.F.                            | 2002 |
| All measurements from K.B. 2007 |      |

CASING RECORD

### FORMATION TOPS & STRUCTURAL POSITION

| FORMATION        | SAMPLE TOPS | SUBSEA DATUM | ELEC LOG TOPS | SUBSEA DATUM | REFERENCE WELL |              |           |             |              |            |
|------------------|-------------|--------------|---------------|--------------|----------------|--------------|-----------|-------------|--------------|------------|
|                  |             |              |               |              | A              | B            |           |             |              |            |
| <b>Anhydrite</b> | <b>1537</b> | <b>+470</b>  | <b>1537</b>   | <b>+470</b>  | <b>1553</b>    | <b>+469</b>  | <b>+1</b> | <b>1542</b> | <b>+482</b>  | <b>-12</b> |
| <b>Topoka</b>    | <b>2967</b> | <b>-960</b>  | <b>2964</b>   | <b>-957</b>  | <b>2985</b>    | <b>-963</b>  | <b>+6</b> | <b>2978</b> | <b>-954</b>  | <b>-3</b>  |
| <b>Heebner</b>   | <b>3164</b> | <b>-1157</b> | <b>3162</b>   | <b>-1155</b> | <b>3185</b>    | <b>-1163</b> | <b>+8</b> | <b>3177</b> | <b>-1153</b> | <b>-2</b>  |
| <b>Toronto</b>   | <b>3187</b> | <b>-1180</b> | <b>3186</b>   | <b>-1179</b> | <b>3206</b>    | <b>-1164</b> | <b>+5</b> | <b>3201</b> | <b>-1177</b> | <b>-3</b>  |
| <b>Lansing</b>   | <b>3206</b> | <b>-1199</b> | <b>3204</b>   | <b>-1197</b> | <b>3224</b>    | <b>-1202</b> | <b>+5</b> | <b>3216</b> | <b>-1194</b> | <b>-3</b>  |
| <b>Stark</b>     | <b>3386</b> | <b>-1379</b> | <b>3384</b>   | <b>-1377</b> | <b>3407</b>    | <b>-1385</b> | <b>+8</b> | <b>3498</b> | <b>-1374</b> | <b>-3</b>  |
| <b>BKC</b>       | <b>3421</b> | <b>-1414</b> | <b>3419</b>   | <b>-1412</b> | <b>3447</b>    | <b>-1419</b> | <b>+7</b> | <b>3433</b> | <b>-1409</b> | <b>-3</b>  |
| <b>Arbuckle</b>  | <b>3470</b> | <b>-1463</b> | <b>3469</b>   | <b>-1462</b> | <b>DNP</b>     |              |           | <b>3490</b> | <b>-1466</b> | <b>+4</b>  |
| <b>RTD</b>       | <b>3508</b> | <b>-1501</b> | <b>3508</b>   | <b>-1501</b> | <b>3490</b>    | <b>-1468</b> |           | <b>3506</b> | <b>-1482</b> |            |
| <b>LTD</b>       | <b>3506</b> | <b>-1499</b> | <b>3506</b>   | <b>-1499</b> | <b>3492</b>    | <b>-1470</b> |           | <b>3504</b> | <b>-1480</b> |            |

A: PETCX Petroleum, Noland #1, 3-7S-19W, S2 SW NW  
 B: McCoy Petroleum, Belleve "A" #2-3, 3-7S-19W, E2 NW SW

### DRILL STEM TESTS

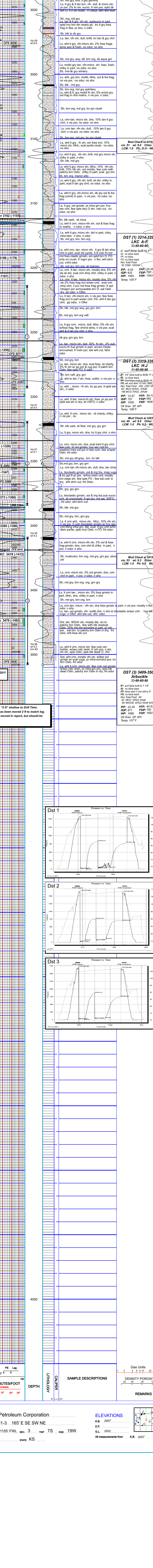
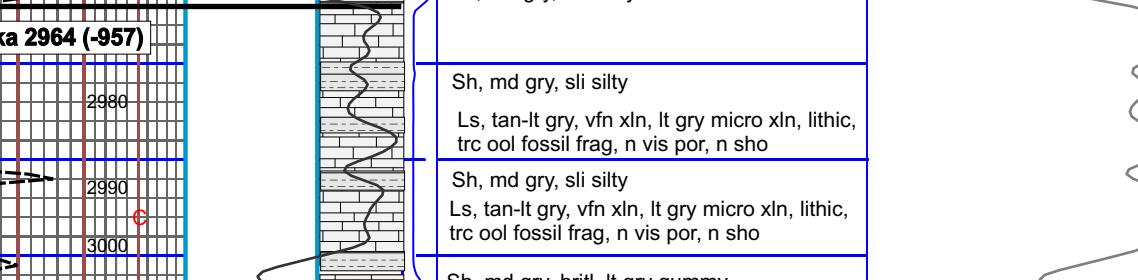
| No. | Interval               | IFP/Time                                | ISIP/Time           | FFP/Time       | FSP/Time            | IHH/FFH              | Recovery  | Spud 2:15 PM 07-11-2011<br>RTD 1:43 PM 07-15-2011   |
|-----|------------------------|---|---------------------|----------------|---------------------|----------------------|---|---|
| 1   | 3214 to 3293 LKC A-F   | 30"<br>Surf blow built to BOB in 17 min | 60"<br>No blow back | 60"<br>No Blow | 60"<br>No blow back | 787<br>No blow back  | IHP: 1564<br>FHP: 1543<br>Rec Total 30' OSM 100% M  | <b>"BIT RECORD"</b><br>1.1 12 1/4 HTC M6.61 16.18 ser 6059905<br>Surf 220'<br>2.1 7.78 HTC Gx 200 ser 5181504 |
| 2   | 3319 to 3384 LKC "H,J" | 30"<br>1/4" blow built to BOB in 17 min | 60"<br>No blow back | 60"<br>No Blow | 60"<br>No blow back | 992<br>No blow back  | IHP: 1636<br>FHP: 1606<br>Rec MCO 240' MCO, 250' GIP<br>60' MCO, 90%O, 10%M<br>186' MCO, 70%O, 30%M | <b>"VERTICAL SURVEYS"</b><br>25' @ 220'<br>5' @ 2162'<br>175' @ 3293'   |
| 3   | 3409 to 3508 Arbuckle  | 30"<br>Surf blow built to 7 1/2"        | 60"<br>No blow back | 60"<br>No Blow | 60"<br>No blow back | 990"<br>No blow back | Rec Total 95'<br>35' MCO 90%O 5%W<br>60' WOCM 45%O 5%W 5%W  | <b>"DUMP DATA"</b><br>D-375<br>Stroke 14, Liner 6   |
| 4   |                        |   |                     |                |                     |                      |   |   |
| 5   |                        |   |                     |                |                     |                      |   |   |
| 6   |                        |   |                     |                |                     |                      |   |   |
| 7   |                        |   |                     |                |                     |                      |   |   |

REMARKS & RECOMMENDATIONS:

**Based on sample shows, dst results, and structural position, casing was set**  
**NOTE: The electric log is "2 ft" shallow to Drill Time.**  
**The drilling time & TOPS has been moved 2 ft to match log.**  
**DSTs, CFS, have not been moved in report.**

LAN 7/92, Modified 5/05 Hanover, KS 66945

### LEGEND



RTD 3508' 3:16 pm 7/15/2011 LTD 3508'

NOTE: The electric log is "2 ft" shallow to Drill Time. The drilling time & TOPS has been moved 2 ft to match log. DSTs, CFS, have not been moved in report, but should be moved up 2 ft.

### DRILLING TIME IN MINUTES/FOOT



COMPANY McCoy Petroleum Corporation

LEASE KST "A" #1-3 165' E SE SW NE

ELEVATIONS

LOCATION 2310' FNL 1155' FWL SEC 3 TWP 7S RGE 19W

COUNTY Rocks STATE KS

D.F. 2007

