

TRANS PACIFIC OIL CORPORATION MUIR LEASE

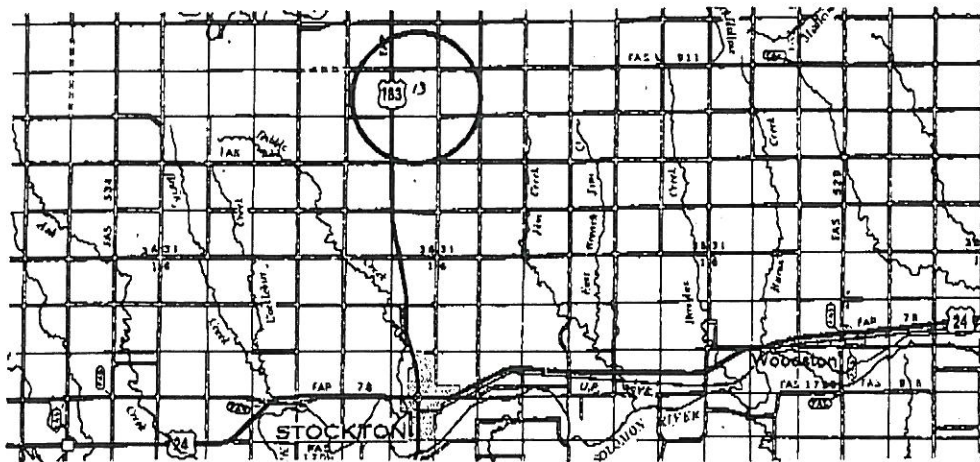
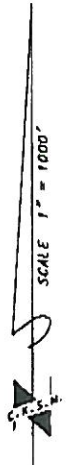
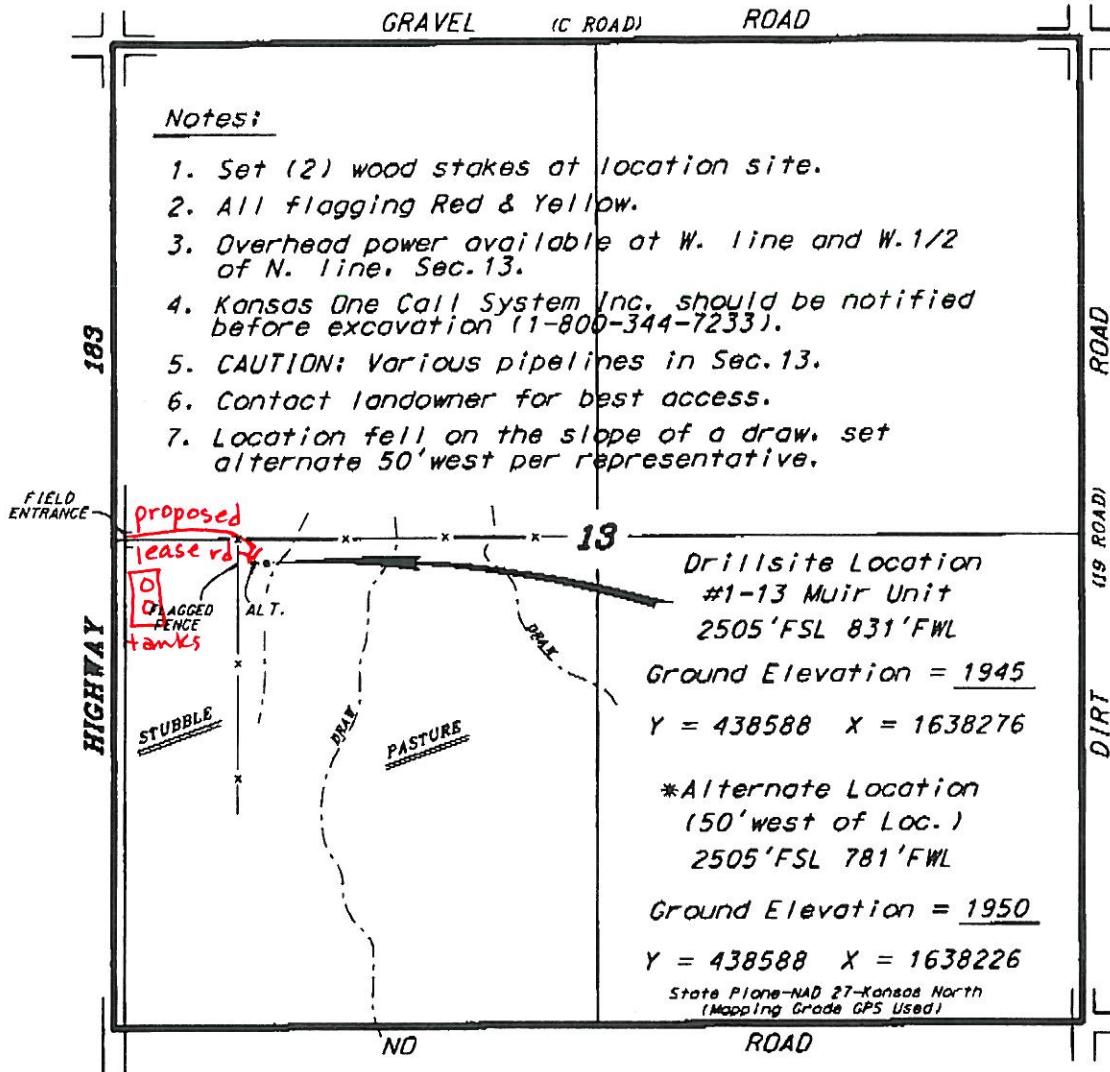
SW.1/4, SECTION 13, T6S, R18W
ROOKS COUNTY, KANSAS

GRAVEL (C ROAD) ROAD

Notes:

1. Set (2) wood stakes at location site.
2. All flagging Red & Yellow.
3. Overhead power available at W. line and W.1/2 of N. line, Sec.13.
4. Kansas One Call System Inc. should be notified before excavation (1-800-344-7233).
5. CAUTION: Various pipelines in Sec.13.
6. Contact landowner for best access.
7. Location fell on the slope of a draw, set alternate 50' west per representative.

*Ingress and egress to location as shown on this plot is per usage only and may not be legally opened for public use. Contact landowner, tenant and county road department for access.



* Controlling data is based upon the best maps and photographs available to us and upon a regular section of land containing 360 acres.

* Approximate section lines were determined using the normal standard of care of oilfield surveyors practicing in the state of Kansas. The section corners, which establish the precise section lines, were not necessarily located, and the exact location of the drillsite location in the section is not guaranteed. Therefore, the operator securing this service and occupying this plot and all other parties relying thereon agree to hold Central Kansas Oilfield Services, Inc., its officers and employees harmless from all losses, costs and expenses and hold entities released from any liability from incidental or consequential damages.

* Elevations derived from National Geodetic Vertical Datum.

Date September 20, 2011