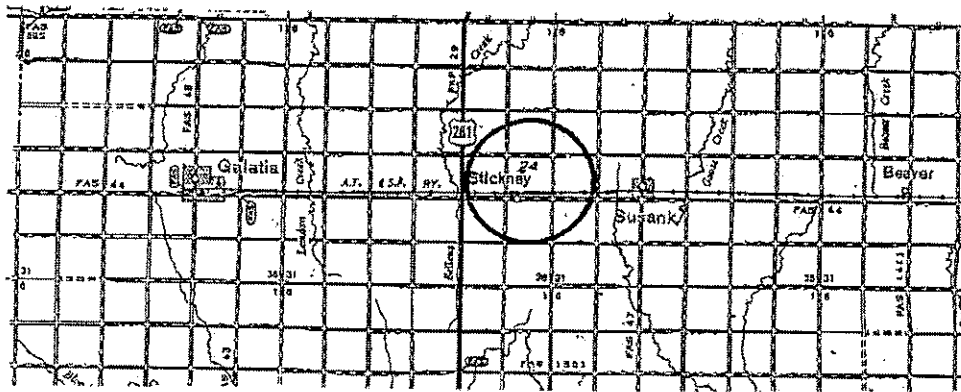
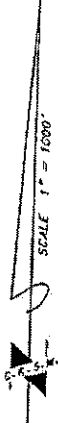
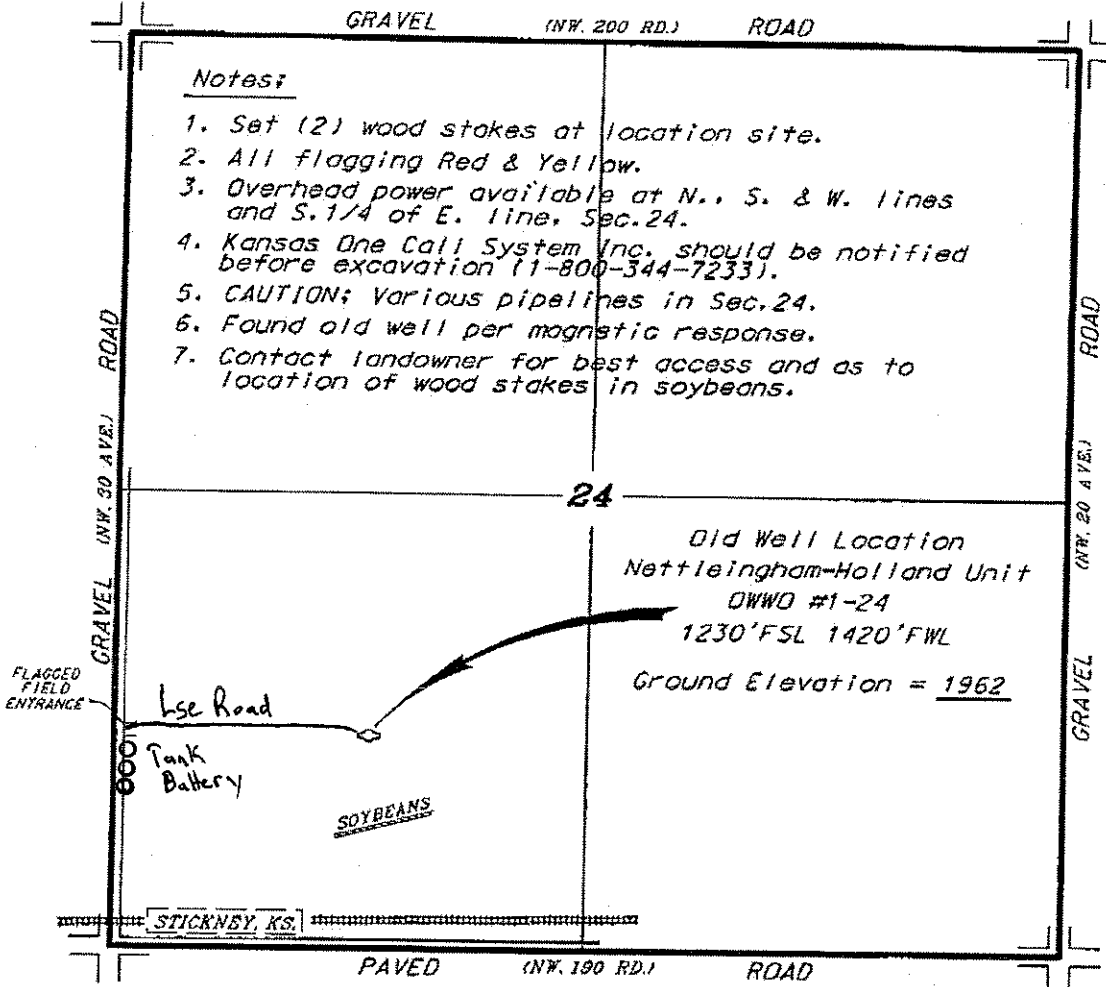


MURFIN DRILLING COMPANY, INC.
NETTLEINGHAM-HOLLAND UNIT LEASE
SW. 1/4, SECTION 24, T16S, R14W
BARTON COUNTY, KANSAS

Notes:

1. Set (2) wood stakes at location site.
2. All flagging Red & Yellow.
3. Overhead power available at N., S. & W. lines and S. 1/4 of E. line, Sec. 24.
4. Kansas One Call System Inc. should be notified before excavation (1-800-344-7233).
5. CAUTION; Various pipelines in Sec. 24.
6. Found old well per magnetic response.
7. Contact landowner for best access and as to location of wood stakes in soybeans.

*Ingress and egress to location as shown on this plat is per usage only and may not be legally opened for public use. Contact landowner, tenant and county road department for access.



* Controlling data is based upon the best maps and photographs available to us and upon a regular section of land containing 640 acres.
 * Approximate section lines were determined using the normal standards of care of oilfield surveyors practicing in the state of Kansas. The section corners, when available and precise section lines, were not necessarily located, and the exact location of the drilled location in the section is not guaranteed. Therefore, the operator, securing this service and operating this plat and all other platting thereon agree to hold Central Kansas Oilfield Services, Inc., its officers and employees harmless from all losses, costs and expenses and said royalties released from any liability from incidental or consequential damages.
 * Elevations derived from National Geodetic Vertical Datum.

Date September 23, 2011

CENTRAL KANSAS OILFIELD SERVICES, INC. (620)792-1977