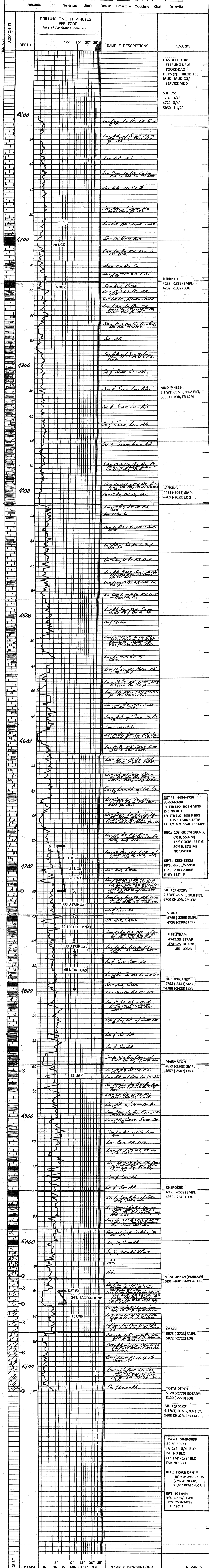


GEOLOGIST'S REPORT
DRILLING TIME AND SAMPLE LOG

COMPANY: MCCOY PETROLEUM CORPORATION	ELEVATIONS
LEASE: SCHMIDT "K" #1-9	K.B. 2350
FIELD: THACH	D.F.
LOCATION: NW-SW-SE	G.L. 2359
SEC. 9	T19P. 29
COUNTY: KIOWA	STATE: KANSAS
CONTRACTOR: STERLING DRILLING, RIG #2	CASING
SPUD: 7/20/71	COMP. 8/9/71
RTD: 5/120	LTD. 5/120
MUD WP: 3487	TYPE MUD: CHEMICAL
APL NO. 15-087-21701	LOG TECH: PDC-CML, DML, MICRO
SAMPLES SAVED FROM: 4100'	TO: RTD
DRILLING TIME KEPT FROM: 4100'	TO: RTD
SAMPLES EXAMINED FROM: 4100'	TO: RTD
GEOLOGICAL SUPERVISION FROM: 3930'	TO: RTD
GEOLOGIST ON WELL: JERRY A. SMITH	
FORMATION TOPS	LOG
HEEBNER	4232 (-1882)
LANSHING	4409 (-2059)
STARK	4740 (-2386)
CHEROKEE	4959 (-2609)
MISSISSIPPIAN	5031 (-2681)



COMPANY MCCOY PETROLEUM CORPORATION	ELEVATION 2350 KB
LEASE SCHMIDT "K" #1-9	
LOCATION NW-SW-SE	SEC 9 TWP 29 RGE 19W
COUNTY KIOWA	STATE KS