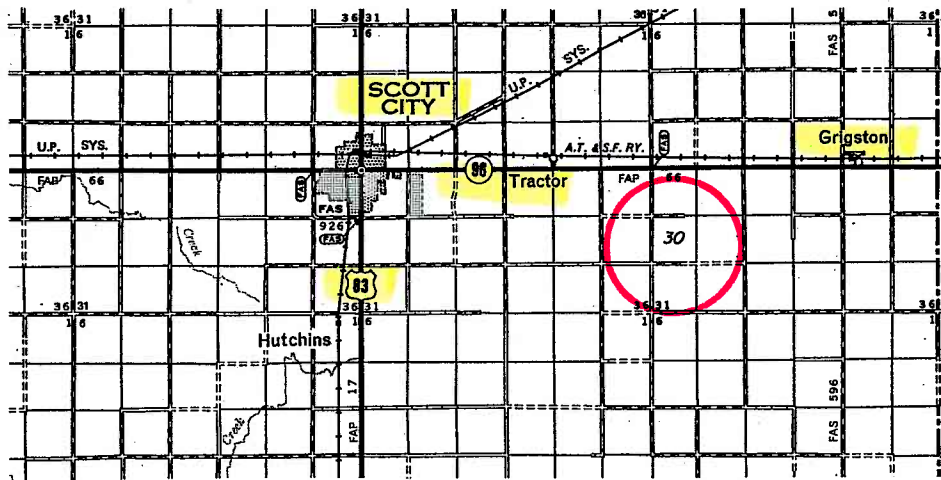
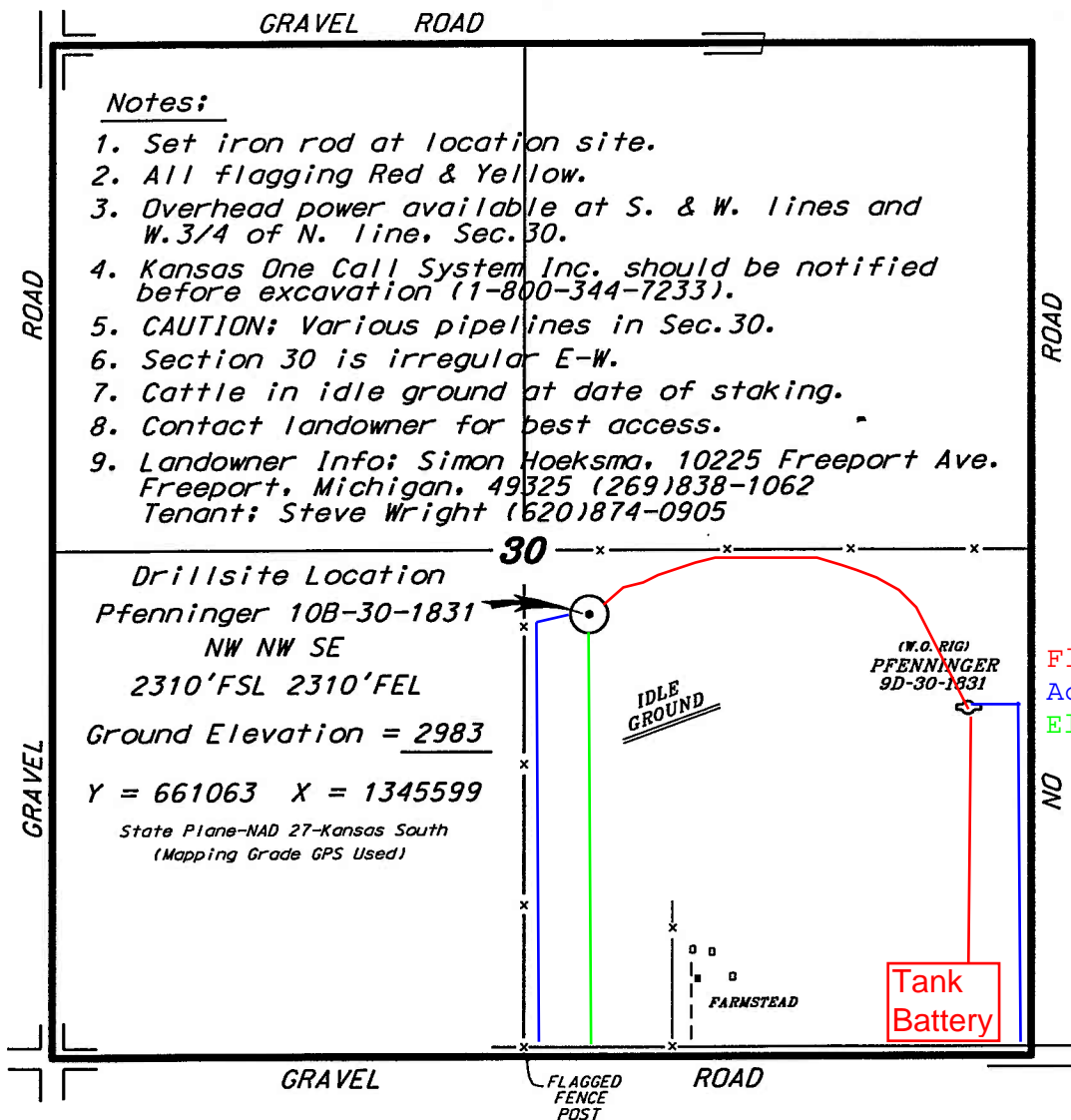


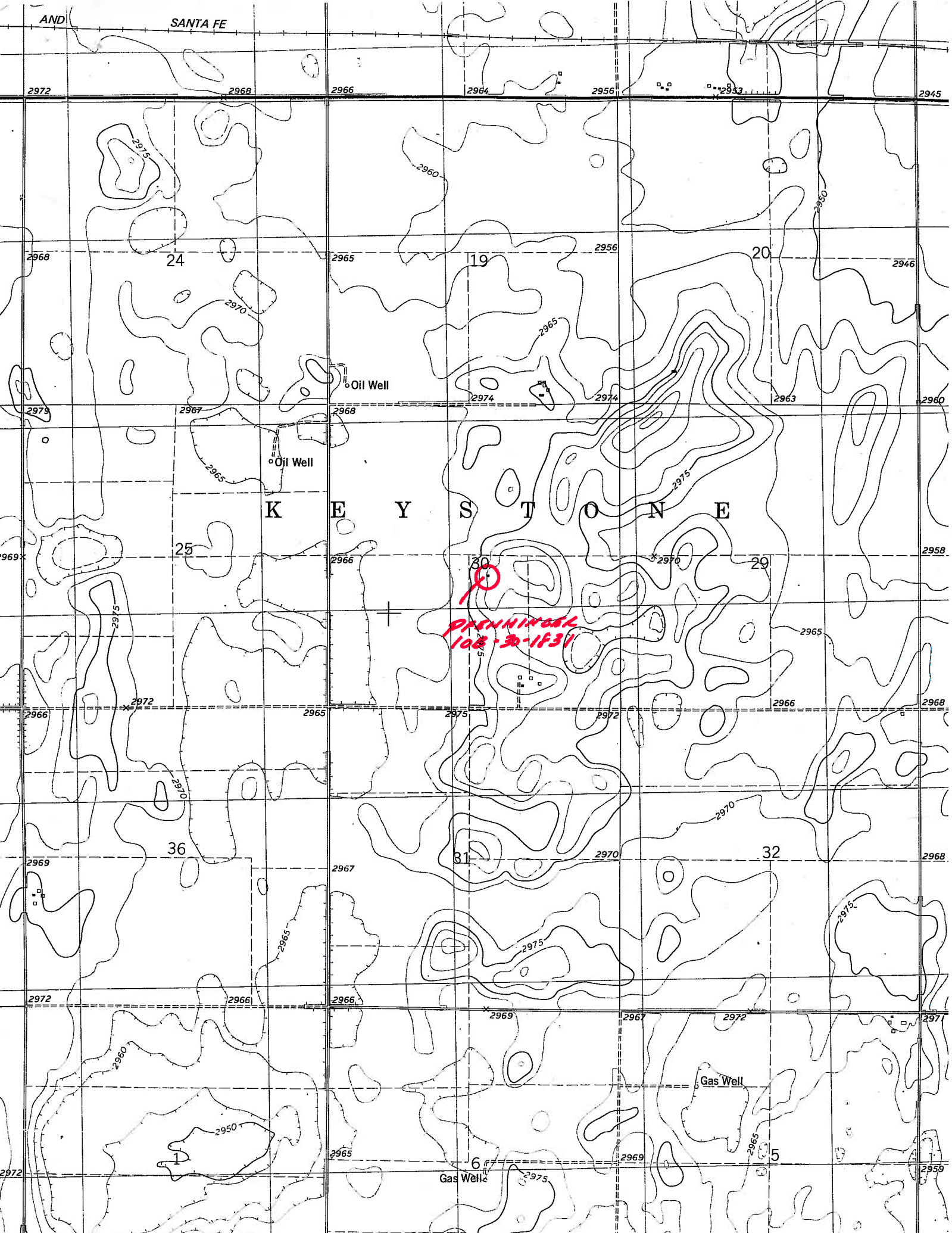
FIML NATURAL RESOURCES, LLC  
 PFENNINGER LEASE  
 SE.1/4, SECTION 30, T18S, R31W  
 SCOTT COUNTY, KANSAS

\*Ingress and egress to location as shown on this plat is per usage only and may not be legally opened for public use. Contact landowner, tenant and county road department for access.



\* Controlling data is based upon the best maps and photographs available to us and upon a regular section of land containing 640 acres.  
 \* Approximate section lines were determined using the normal standard of care of oilfield surveyors practicing in the state of Kansas. The section corners, which establish the precise section lines, were not necessarily located, and the exact location of the drillsite location in the section is not guaranteed. Therefore, the operator securing this service and accepting this plat and all other parties relying thereon agree to hold Central Kansas Oilfield Services, Inc., its officers and employees harmless from all losses, costs and expenses and said entities released from any liability from incidental or consequential damages.  
 \* Elevations derived from National Geodetic Vertical Datum.

Date September 15, 2011



2972 2968 2966 2964 2956 2945

2968 24 2965 19 2956 20 2946

2979 2967 2968 Oil Well 2974 2974 2963 2960

2969 25 2966 KEY STONE 2970 29 2958

2966 2972 2965 2975 2972 2966 2968

2969 36 2967 31 2970 32 2968

2972 2966 2966 2969 2967 2972 2971

2972 2965 2969 2972 2965 2969 2971 2955

**PACIFIC  
108-30-1F31**

Oil Well

Oil Well

Gas Well

Gas Well