

SH-RED-BLKY-SLTY

DOLO-LT GRY-F-GRN-SH LT GRY IMBD-FR
FRAC/SM VUG/PP POR-DULL WHT MIN
FLOR-NO VIS SHOW

DOLO-GRY-F-GRN-SHLY-HD-DNS

DOLO-OFF WHT/GRY-V-F-XLN -SNDY
MTRX-FOSS FRAGS-BLOCKY-HD-DNS

WINFIELD 2338' (-604')

DOLO-LT GRY/BLK SPECS-F-GRN-BRIT-FOSS
FRAGS-TR PP POR-NO VIS FLOR-NO VIS
SHOW

DOLO-LT GRY-F-GRN-V-SHLY-BRIT-NO VIS
POR

LS-TN-M-XLN-SUCRO-BRIT-GD-INTER-GRN
POR-DULL MIN FLOR-NO VIS SHOW

SH-GRY-BLKY-WAXY

TOWANDA 2396' (-662')

LS-TN-F-GRN-TR FOSS-HD-DNS W/ TR PP POR
IP-NO VIS FLOR-NO VIS SHOW

LS-TN-F-XLN-TR FOSS/OOL-GLAU-SM PYR
XLS-HD-DNS

LS-OFF WHT/TN-F-XLN-V-FOSS-OOL-TR
INTER-PRT POR-DULL WHT MIN FLOR-NO VIS
SHOW

LS-TN-F-XLN-OOL-HD-DNS

FT RILEY 2442' (-708')

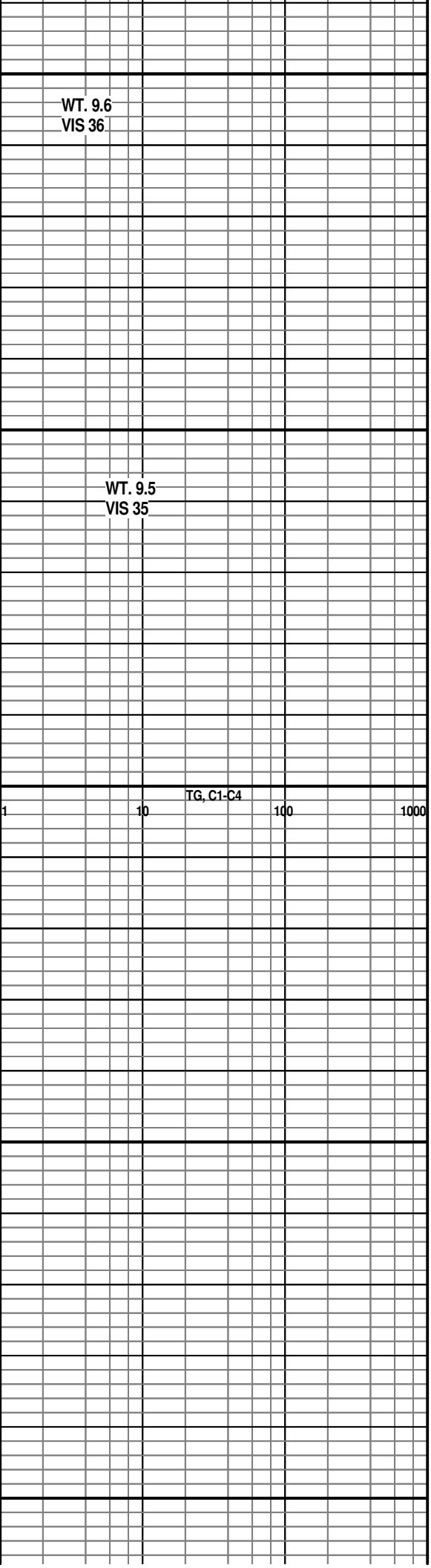
LS-TN-F-XLN-LG OOL-V-GD OOL-MOLDIC
POR-DULL MIN FLOR-NO VIS SHOW

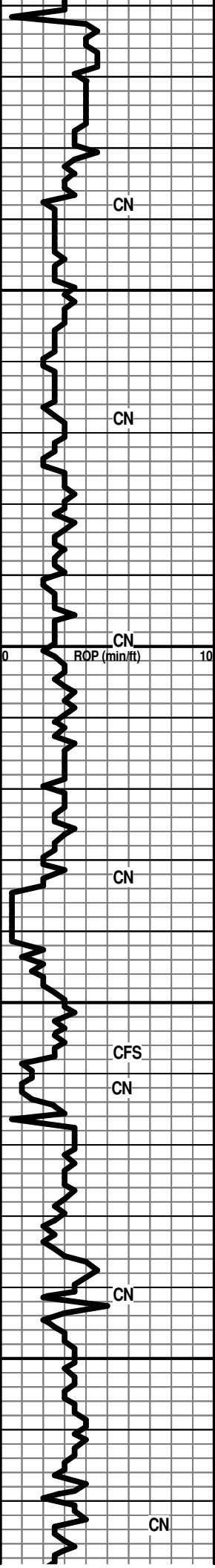
LS A.A.

LS-TN/GRY-F-XLN-FOSS-HD-DNS

LS-OFF WHT/GRY-F-XLN-FOSS-HD-DNS

LS-LT GRY-F-GRN-SNDY TEX-TR SM FOSS
FRAGS-PR PP AND TR FRAC POR-NO VIS
FLOR-NO VIS SHOW



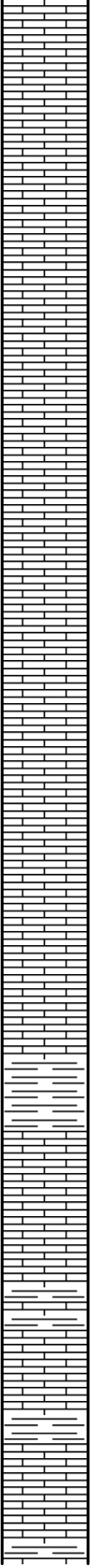


2550

2600

2650

2700



LS-TN-V-F-GRN-BLOCKY-HD-DNS

LS-GRY-F-XLN-BLOCKY-HD-DNS

LS-GRY-F-XLN-FOSS-HD-DNS W/
CHRT-GRY-OPQ-FRSH

LS-OFF WHT/GRY-F-GRN-CHLKY
MTRX-V-FOSS(SM SHELLS)-BRIT-TR PP
POR-NO VIS FLOR-NO VIS SHOW

LS-TN-F-XLN-TR FOSS FRAG-HD-DNS

LS-GRY-F-XLN-LG BLK FOSS-HD-DNS

SH-GRN-GRY-SFT-WAXY

SH-LT GRN-BLKY

LS-TN/GRY-V-F-XLN-CHRTY-HD-DNS

WREFORD 2634' (-900')

LS-TN-F-XLN-OOL-GD-OOL-MOLDIC
POR-DULL WHT MIN FLOR-FOSS FRAGS
LOOSE IN TRAY

COUNCIL GROVE 2658' (-924')

SH-GRY-GRN-BLKY-WAXY

POOR SAMPLES

LS-GRY-F-XLN-FOSS-HD-DNS

LS-GRY-F-XLN-SHLY-FOSS-HD-DNS

SH-GRY-BLKY-FOSS

SH-GRY-FRM-BLKY-LMY

TG, C1-C4
1 10 100 1000

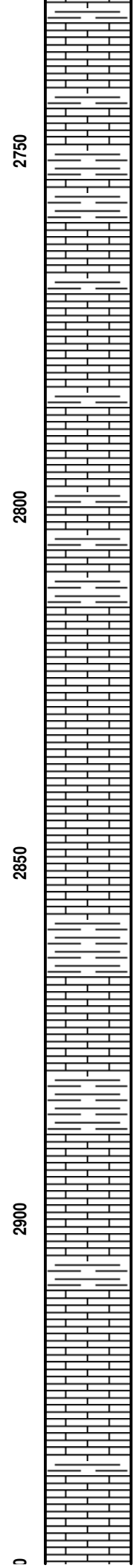
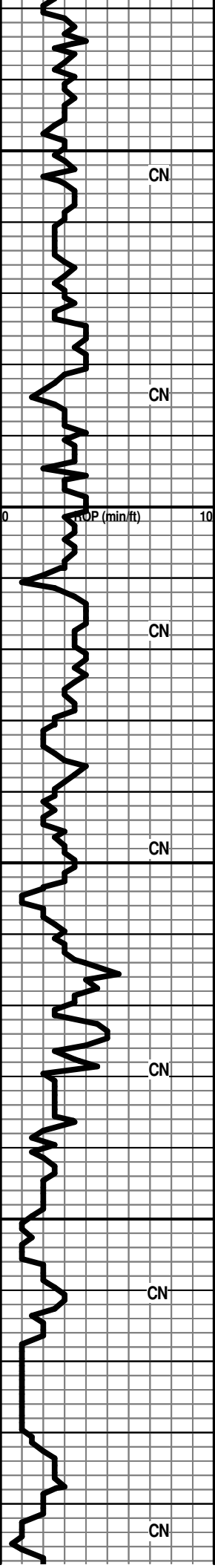
WT. 9.8
VIS 32

HW-4 UNIT GAS
INCRS-CHROMO-3
UNIT

WT. 9.6
VIS 30

WT. 9.4
VIS 40

WT. 9.5
VIS 43



LS-GRY-F-XLN-BRIT-FOSS-SHLY-DNS

SH-GRY-FRM-BLKY-FOSS

WT. 9.6
VIS 36

LS-TN-M-XLN-TR FOSS-HD-DNS

POOR SAMPLE

WT. 9.6
VIS 33

POOR SAMPLE

TG, C1-C4

POOR SAMPLE

LS-TN-M-XLN-FOSS-TR OOL-TR CHLK IN TRAY

LS A.A.

LS-CRM-M-XLN-V-FOSS-TR INTER-PRT
POR-TR CHLK IN TRAY

SH-GRY-FRM-BLKY-FOSS-TR PYR XLS

LS-CRM-F-M-XLN-HD TO BRIT-TR FOSS-PR TO
FR INTER-XLN POR-DULL WHT FLOR-NO VIS
SHOW

RED EAGLE 2896' (-1162')

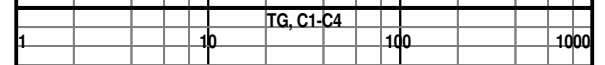
LS-CRM-M-XLN-FOSS FRAGS-TR CHLK-PR TO
FR INTER-XLN/FOSS POR-DULL WHT FLOR

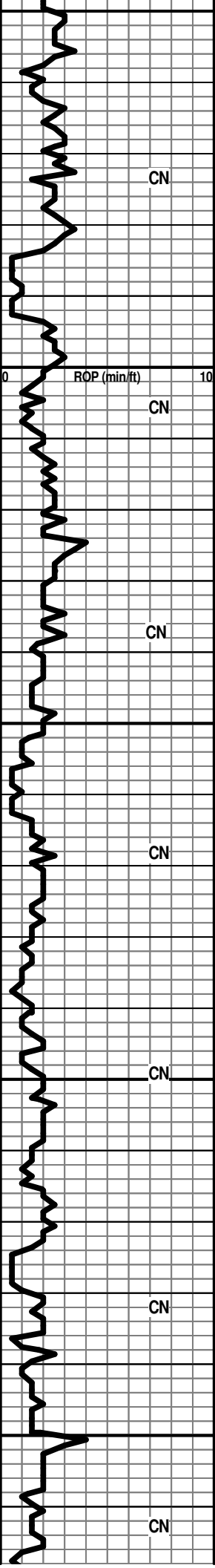
WT. 9.3
VIS 33

LS-CRM-M-XLN-FOSS FRAGS-CHLKY IP-FR
INTER-XLN/FOSS POR-DULL WHT FLOR

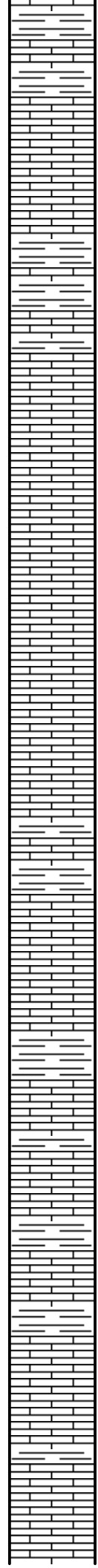
LS-A.A.

LS-CRM-M-XLN-FOSS-OOL-TR CHLK-PR
OOL-MOLDIC POR-DULL WHT MIN FLOR





2950
3000
3050
3100
3150



SH-GRY-FRM-BLKY-FOSS

LS-CRM-F-XLN-FOSS-HD-DNS-W/ PYR XLS

LS-CRM-F-XLN-OOL-FOSS-FR OOL-MOLDIC
POR-DULL WHT MIN FLOR

LS-OFF WHT-F-XLN-FOSS-OOLTR -FR
OOL-MOLDIC POR

LS-CRM-F-XLN-FOSS-HD-DNS

LS-OFF WHT-F-XLN-OOL-FR TO GD
OOL-MOLDIC POR-DULL WHT MIN FLOR

LS-GRY-F-XLN-SHLY-HD-DNS

LS-OFF WHT-F-XLN-SNDY TEX-FOSS
FRAGS-TR CHLK IP-NO VIS POR

SH-GRY-FRM-BLKY-FOSS

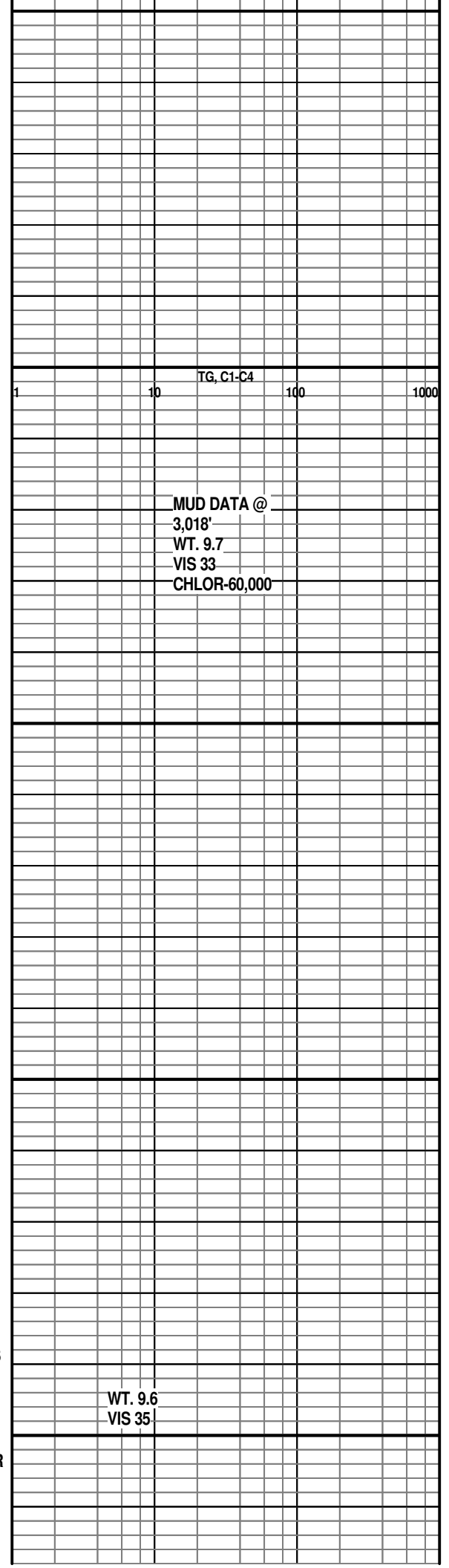
LS /SH A.A.

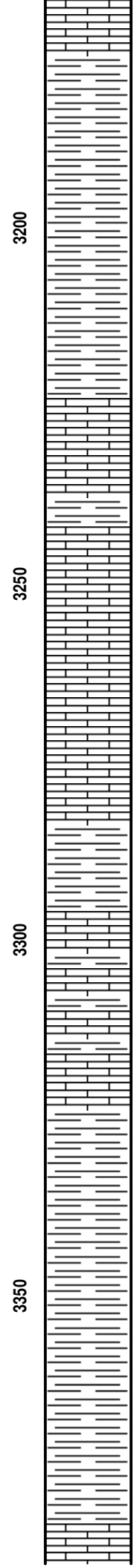
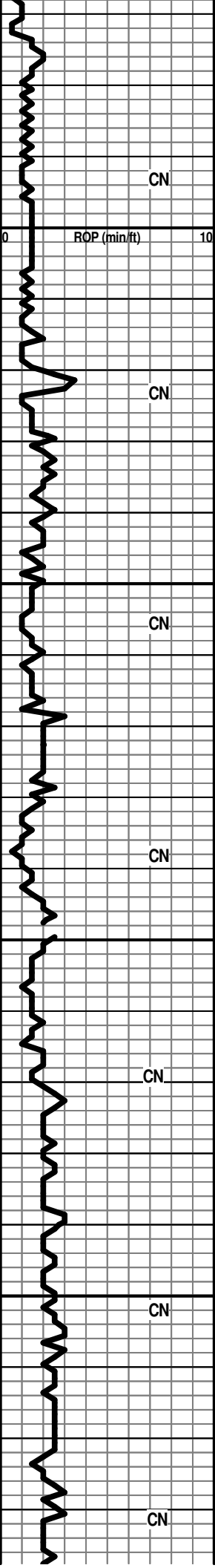
LS-OFF WHT-F-XLN-OOL-TR OOL-MOLDIC
POR IN TRAY-DULL WHT MIN FLOR

LS-OFF WHT/GRY-F-XLN-TR SH IMBD-HD-DNS

LS-GRY-F-XLN-FOSS-TR SH IMBD-NO VIS POR

LS A A W/ PR OOL MOLDIC POR





LS A.A. W/ TR OOL-MOLDIC POR

SH-GRY-SFT-SLTY

SH-GRY-V-SLTY

WABAUNSEE 3204' (-1470')

LS-OFF WHT-F-XLN-OOL-TR OOL-MOLDIC
POR IN TRAY-SCATT DULL YEL FLOR

LS-CRM-M-XLN-TR FOSS-HD-DNS

LS-GRY-F-XLN-SH-LT GRY-DISS-HD-DNS

SH-GRY-SFT-TR FOSS-FUS

LS-OFF WHT-F-XLN-TR FOSS-HD-DNS

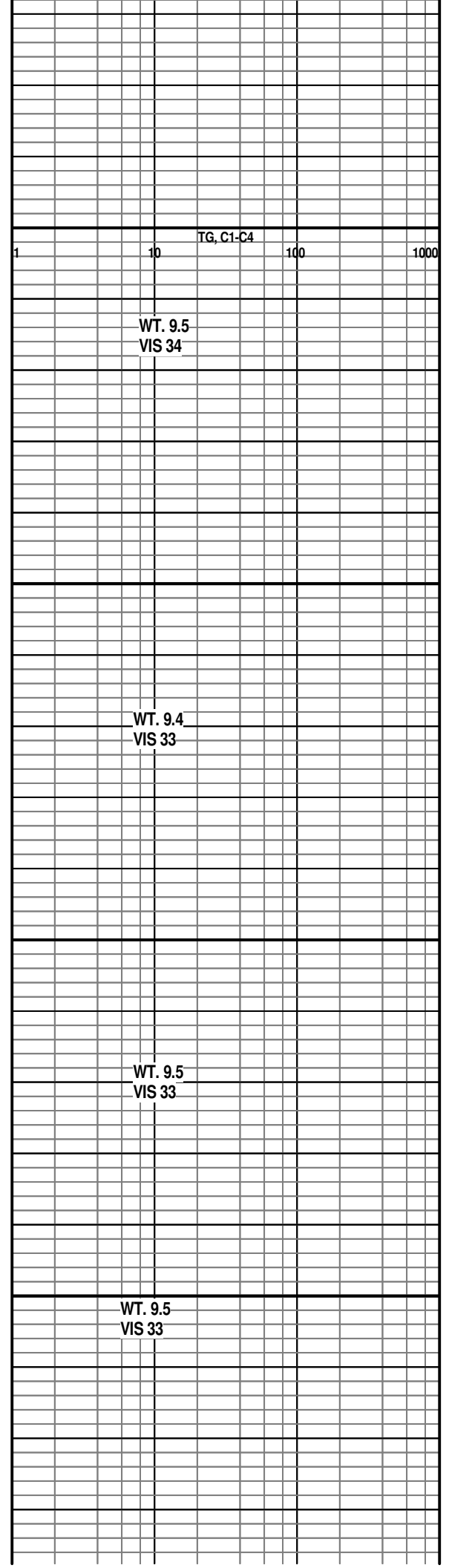
LS A.A. W/ TR CHLK IN TRAY

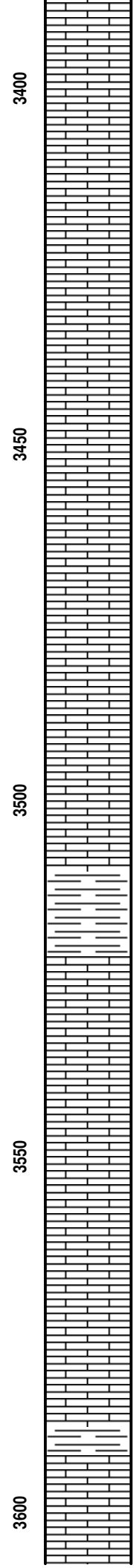
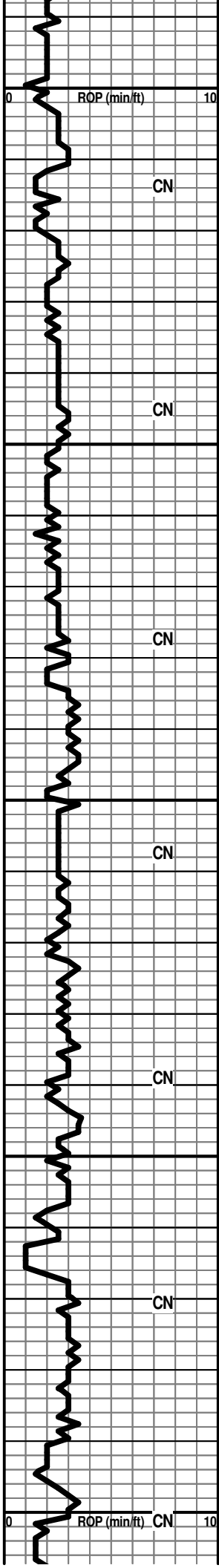
SH-LT GRY-TR SLT-FOSS

SH-GRY-FRM-BLKY

SH-A.A.

STOTLER 3382' (-1648')





LS-OFF WHT-F-XLN-TR FOSS-HD-DNS

LS A.A. W/ CHRT-GRY-OPQ-FRSH IN TRAY

LS-CRM-M-XLN-FOSS-PR TO FR INTER-XLN POR

LS-CRM-F-M-XLN-FOSS FRAGS-HD-DNS

LS A.A.

LS-CRM-F-XLN-TR FOSS-HD-DNS-SCATT DULL WHT FLOR

LS-OFF WHT-F-XLN-FOSS FRAGS-HD-DNS

LS-OFF WHT-F-XLN-HD-DNS

SH-LT GRY-FRM-BLKY-TR FOSS-FUS

HOWARD 3524' (-1790')

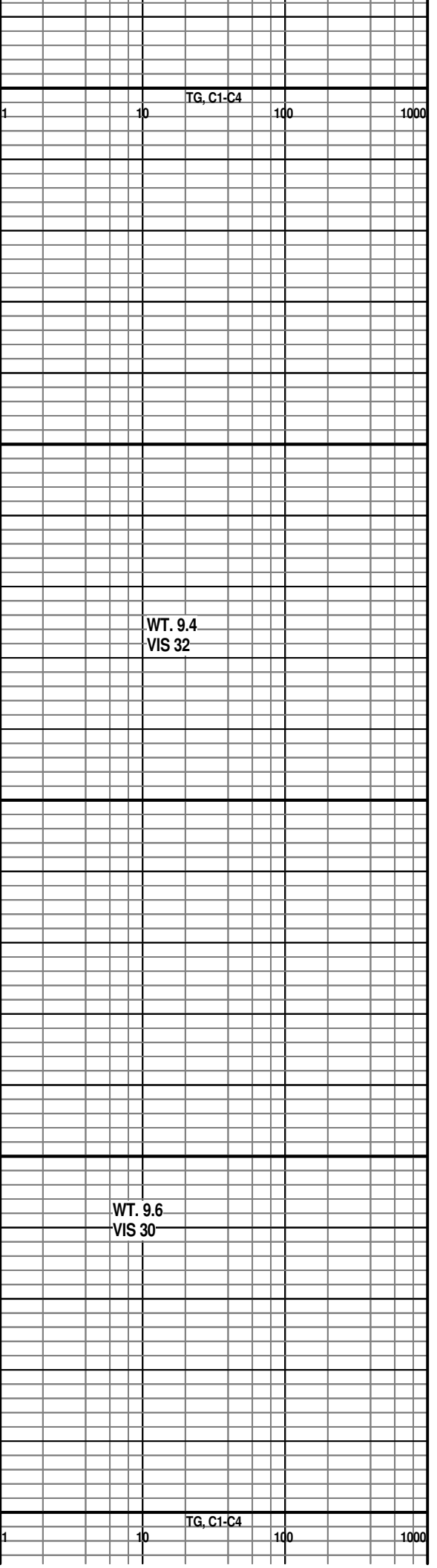
LS-OFF WHT/ GRY MOTT-F-XLN-FOSS-SH LT GRY IMBD IP-NO VIS POR

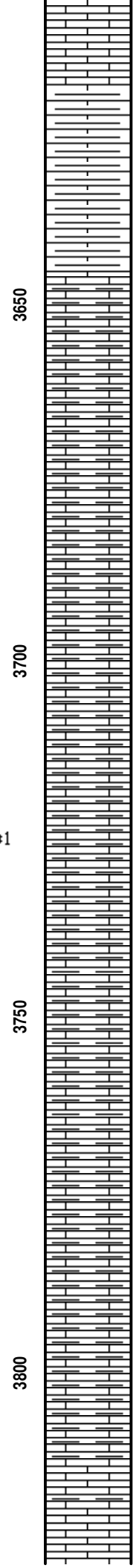
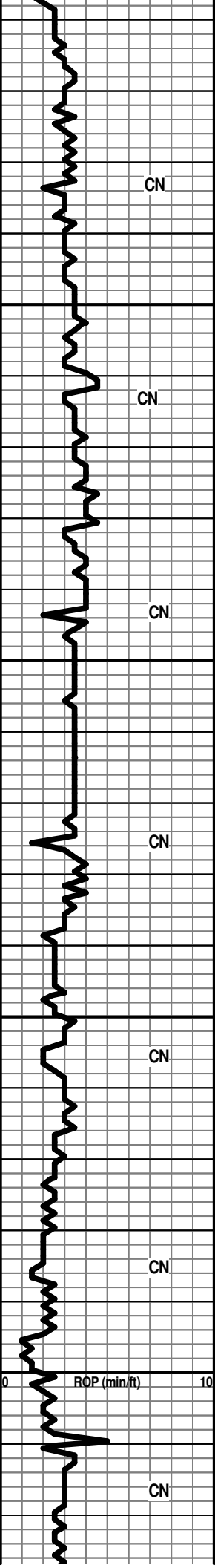
LS-CRM-F-M-XLN-FOSS FRAGS-FR INTER-XLN POR-TR SCATT YEL FLOR-

LS-OFF WHT-F-XLN-HD-DNS

SH-GRY-BLKY-LMY

LS-GRY-F-XLN-SHLY-HD-DNS





POOR SAMPLE

POOR SAMPLE

POOR SAMPLE

POOR SAMPLE

SH-GRY-FRM-BLKY-LMY

LS-GRY-F-XLN-BRIT TO HD-SHLY-DNS

SH/LS A.A.

LS-GRY-F-XLN-BRIT-V-ARGIL-DNS

SH-GRY-SPLNTY

SH-GRY-LMY BLKY

LS-GRY-F-XLN-TR FOSS-ARGIL

WT. 9.3
VIS 34

MUD DATA @
3,625'
WT. 9.3
VIS 34
CHLOR 45,000

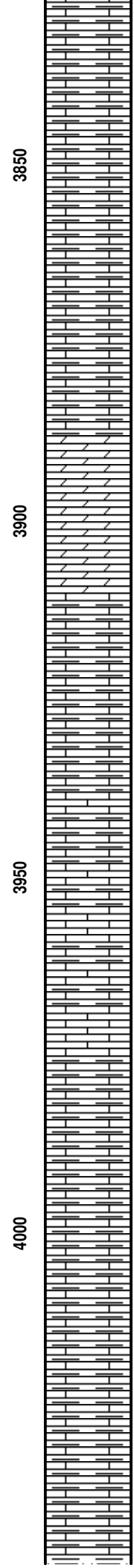
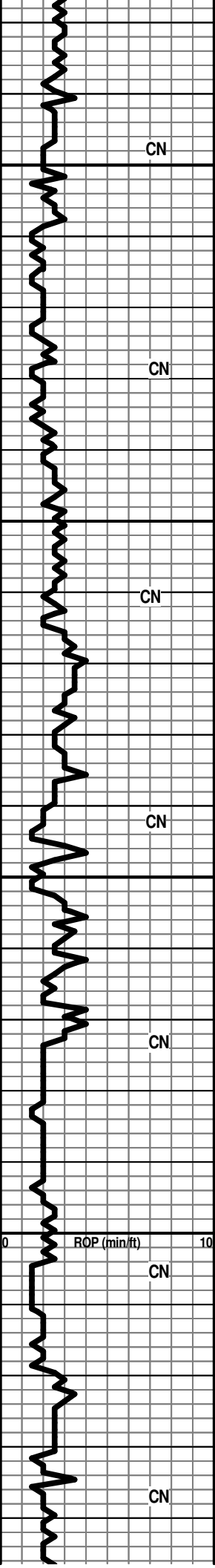
WT. 9.4
VIS 33

WT. 9.3
VIS 32

DISPLACE MUD AT
3795'

WT. 8.6
VIS 54
LCM 1/2

TG, C1-C4



SH-LT GRY-WAXY

CN

SH-GRY-GRN-SFT-WAXY

SH-GRY-SFT-BLKY

LS/DOLO-F-XLN-V-FOSS-SM PYR XLS-BRIT TO HD-TR INTER-GRN POR-BRITE WHT FLOR-NO VIS CUT

CN

SH-GRY-BLKY-LMY

SH-DK GRY-V-ARGIL

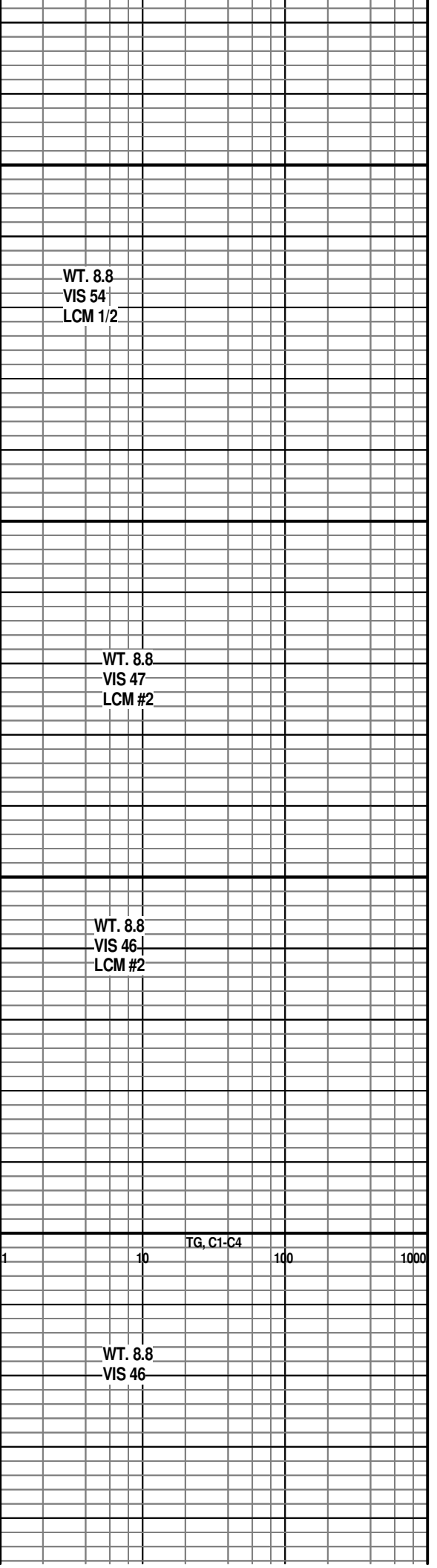
LS-OFF WHT-F-XLN-FN SNDY TEX-SHALLOW VUG POR-DULL WHT MIN FLOR-NO VIS SHOW

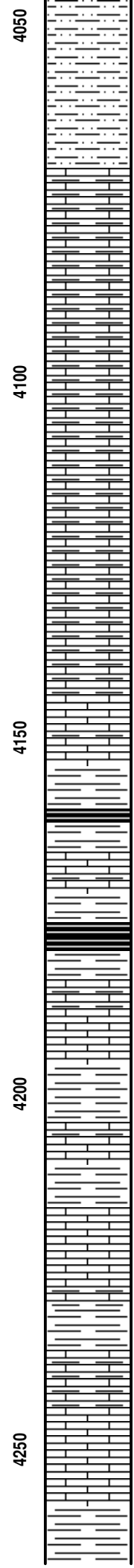
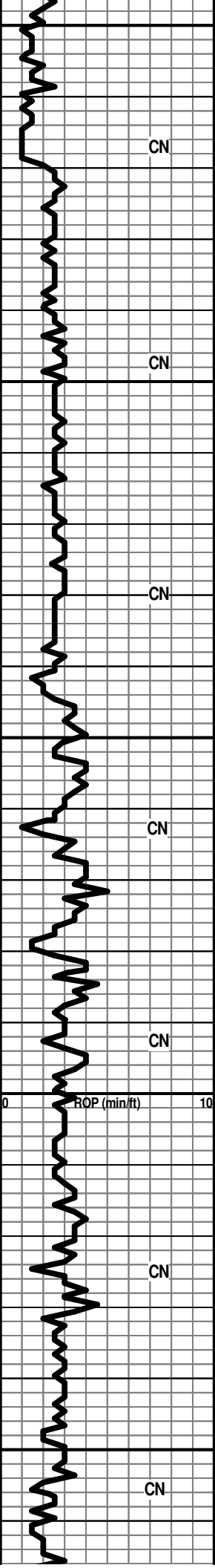
LS-DK BRN-V-F-XLN-FOSS-CHRTY-HD-DNS

POOR SAMPLE

SH-DK GRY-BLKY-LMY

SH A.A. W/ CHRT-MULTI-OPQ-FRSH





SLTSS-LT GRY-V-F-GRN-V-FRI-SHLY-TR
INTER-GRN POR TO NO VIS POR-

SS-FRSTY WHT-F-GRN-FRI-V-SM-FOSS
FRAGS-DOLO CMT-FR INTER-GRN POR IP-NO
VIS FLOR-NO VIS CUT TR HEM/GLAU

SH-GRY-SLTY-HEM

SH-DK GRY-BLKY-LMY

SH-A.A.

LS-GRY-F-XLN-HD-DNS -V-SHLY

SH-BLK-CARB

**HEEBNER 4178' (-2444')
LOG 4183' (-2449')**

SH-BLK-CARB

LS-TN-F-XLN-TR FOSS-SM PYR XLS-HD-DNS

SH-GRY-BLKY-LMY

LS-GRY-F-XLN-SHLY-BRIT-DNS

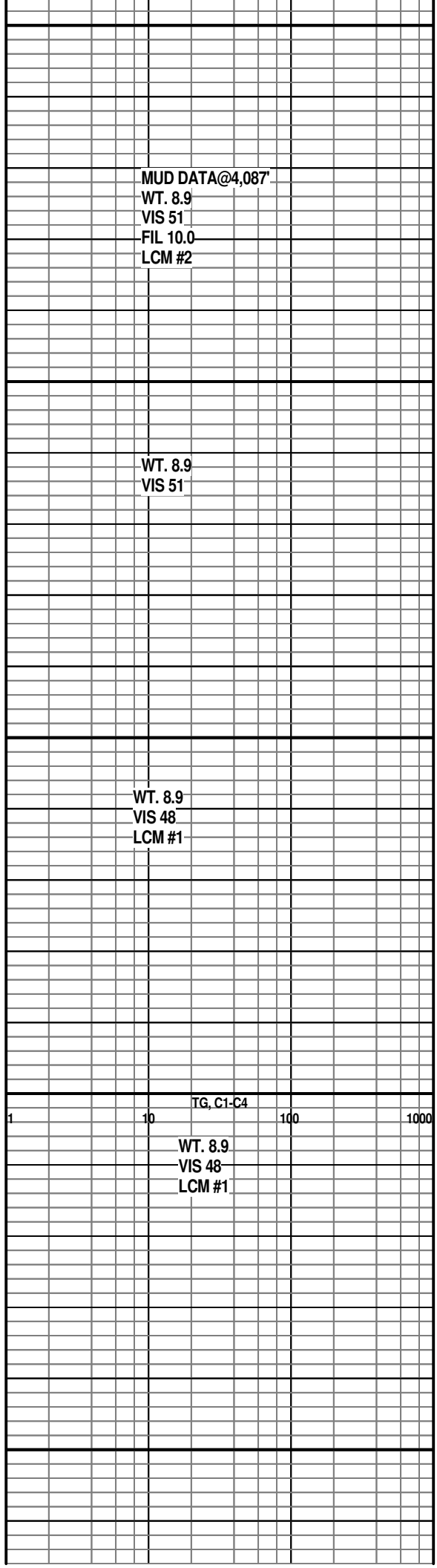
LS-OFF WHT-F-XLN-CHLKY-BRIT-DNS

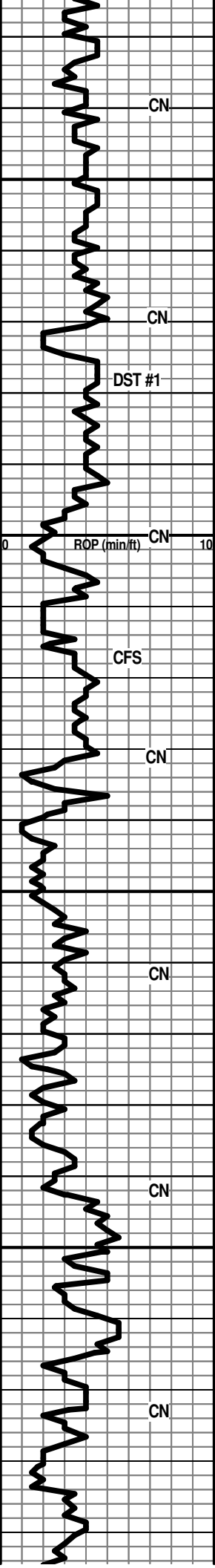
LS-GRY-F-XLN-HD-DNS

LS-DK GRY-F-XLN-SHLY-HD-DNS W/ SM PYR
XLS IMBD

LS-LT BRN-F-XLN-TR SM FOSS-TR
GLAU-HD-DNS

DOUGLAS SH 4256' (-2522')





4950
5000
5050
5100

**MARMATON 4938' (-3204')
LOG 4938' (-3204')**

LS-TN-V-F-XLN-TR CRS EDGE XLS-HD-TR
INTER-GRN IN CRS XLS-NO VIS FLOR-NO VIS
SHOW

SH-BLK-CARB

**ALTAMONT 4990' (-3256')
LOG 4993' (-3259')**

LS-OFF WHT-F-GRN-CHLKY TEX-FR SM VUG
POR W/ FRAC POR-LT BRN STN WHEN
DRIED-FEW PC SCATT BRITE WHT FLOR-GD
FLSH CUT WHEN CRSHED--GAS BUB-FNT
ODOR

LS A.A.

**PAWNEE 5034' (-3300')
LOG 5036' (-3302')**

LS-LT TN-F-GRN-CHLKY TEX-BRIT-NO VIS
POR-TR SCATT BRITE FLOR-FLSH CUT WHEN
CRSHED- W/ CHRT-BRN-OPQ-FRSH

**FT SCOTT 5074' (-3340')
LOG 5074'**

LS-TN-FGRN-SNDY TEX-ABUNDT SM FOSS
FRAGS -V SM OOL-TR SM VUG AND SURF
VUG POR-NO VIS FLOR-NO VIS CUT-GAS
BUB-FNT ODOR

**CHEROKEE 5093' (-3359')
LOG 5088' (-3354')**

LS-OFF WHT-F-XLN-SNDY TEX-TR CHLK-TR
FRAC POR TO NO VIS POR-FOSS-FUS-NO VIS
FLOR-

LS-OFF WHT-F-XLN-SNDY TEX-HD-DNS TR
CHLK IN TRAY

SH-BLK-CARB

LS-LT BRN-F-XLN-FOSS-HD-DNS W/ CHRT-LT
BRN-OPQ-FRSH

DST #1
4982' TO 5088'
REC 125' MUD
IBLW-GD BLW
-BOB IN 30 SECS
FBLW-GD
BLW-BOB IN 10
SEC-GAS TO
SURF IN 5 MIN
5/60/45/90
5/60/45/90
SIP-2037.42
-2007.93
IFP-127.02-130.18
FFP-117.99-133.03
HP-2547.85-2375.53

min	choke	psig	mcf/d
10	1.00	2.24	68.31
20	.38	9.28	34.51
30	.50	6.29	43.41
40	.50	6.01	41.52

HW 20 UNIT GAS

INCRS	TG, C1-C4
1	100

WT. 9.2
VIS 60
LCM #2

WT. 9.2
VIS 49
LCM #6

**55 UNIT GAS
INCRS**

WT. 9.1
VIS 49
LCM #4

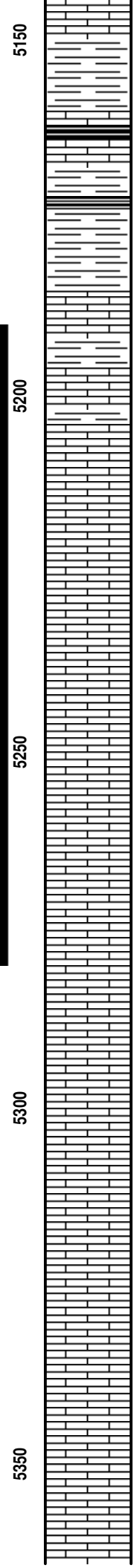
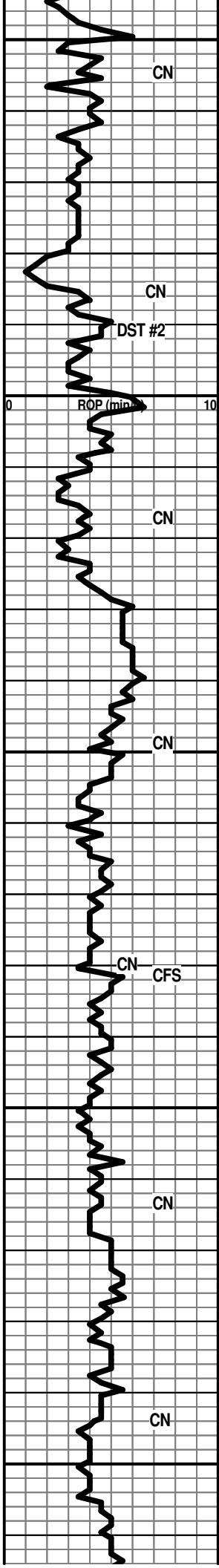
**20 UNIT GAS
INCRS**

MUD DATA @
5,088'
WT. 9.0
VIS 56
FIL 12.0
LCM #4

STRAP PIPE

WT. 9.1
VIS 50
LCM #3

5096.3
5092.38
3.92 SHORT TO
THE BOARD



LS-TN-F-XLN-BRIT-FOSS-TR CHLK-NO VIS POR-NO VIS FLOR

SH-GRY-FRM-LMY

SH-BLK-CARB

SH-BLK-CARB

EINOLA 5184' (-3450')

LS-TN-V-F-XLN (LITHO)-SM FOSS FRAGS-HD-DNS-CHRTY

ERO-MISS 5196' (-3462')

LS-OFF WHT-F-XLN-CHLKY IP-NO VIS POR-NO VIS FLOR

MISSISSIPPI 5204' (-3470') LOG 5202' (-3468')

LS-TN-F-XLN-CHLKY IP-NO VIS POR-W/ CHRT-OFF WHT-VIT-FRSH

LS-OFF WHT-F-XLN-TR FOSS-TR LT BRN STN-SCATT BRITE WHT FLOR-LT FLSH CUT WHEN CRSHED-FNT ODOR

LS-TN-F-XLN-FOSS-HD-DNS

LS-OFF WHT/GRY-F-XLN-V-SLT-TR INTER-GRN POR-NO VIS FLOR

LS-OFF WHT-F-XLN-V-OOL-PR INTER-PRT POR-LT BRN STN-SCATT WHT FLOR-FLSH CUT WHEN CRSHED

LS-OFF WHT-F-XLN-TR SND-PYR XLS -BRIT TO HD-NO VIS FLOR-NO VIS SHOW

LS-TN-F-XLN-HD-DNS TR FRAC POR-NO VIS FLOR-NO VIS SHOW

LS-OFF WHT-F-XLN-V-OOL-NO VIS POR-NO VIS FLOR-NO VIS SHOW W/ CHRT-GRY-OPQ-FRSH

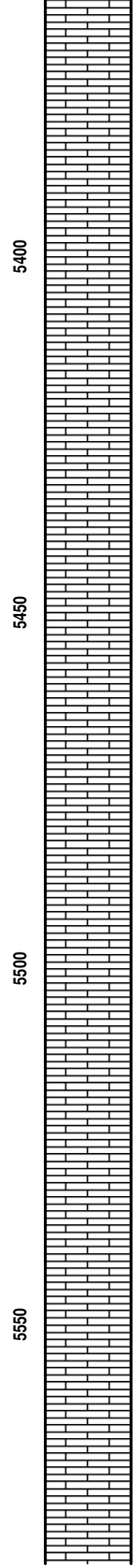
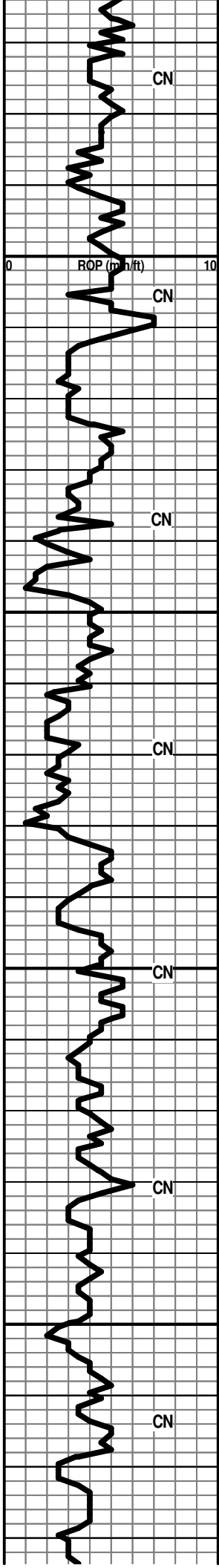
POOR SAMPLE

POOR SAMPLE

LS-GRY-F-XLN-OOL(GRAPE-LIKE)-TR VUG POR-NO VIS FLOR-NO VIS SHOW

LS-GRY-F-XLN-HD-DNS W/ TR CHLK IN TRAY

WT. 9.1 VIS 51 LCM #4			
WT. 9.1 VIS 52 LCM #4			DST #2 5190'-5280' IBLW-GD BLW-BOB OF BUCK IN 2 MIN FBLW-GD BLW
HW-100 PLUS GAS KICK	1	10	BOB AT OPEN 100 -GAS TO SURF IN 4 MIN REC-WATERY MUD /90% MUD 10% WATER 5/60/60/90 IFP-156.7-416.35 FFP-169.55-171.59 SIP-1289.97-1088.6 IH-2580.07-2539.79
min	choke	psig	mcf/d
10	1.0	3.86	115.0
10	1.0	3.86	115.0
20	.5	4.59	31.91
30	.5	5.97	41.22
40	.5	5.90	40.74
			WT. 9.1 VIS 53 LCM #4
			MUD DATA @5,280' WT. 9.4 VIS 59 FIL 13.4 LCM #4
WT. 9.0 VIS 58 LCM #3			
WT. 9.1 VIS 57 LCM #5			



LS-OFF WHT-M-GRN-PYR XLS IMBD-TR
SEMI-CHLK-TR INTER-GRN POR-NO VIS
FLOR-NO VIS SHOW

LS-GRY-F-XLN-V-OOO-BRIT-NO VIS POR TR PR
VUG-NO VIS FLOR-NO VIS SHOW

LS-GRY-F-XLN-TR FOSS FRAGS-HD-DNS W/
CHRT

LS A.A. SHLY

LS-TN-F-GRN-SNDY TEX-TR FRAC POR-NO VIS
SHOW

LS-TN-F-XLN-ABUNDT FOSS
FRAGS-(COQUINA) -FR INTER-PRT POR-NO
VIS FLOR-NO VIS SHOW

LS-GRY-V-F-XLN (LITHO)-SM PYR XLS-NO VIS
POR-NO VIS FLOR

LS-TN-F-XLN-V-FOSS-TR INTER-PRT POR-NO
VIS FLOR

LS-TN-F-XLN-ABUNT FOSS FRAGS-FR
INTER-PRT POR-NO VIS FLOR

LS A.A.

LS-TN-F-XLN-FOSS-PYR IMBD-HD-DNS

LS-OFF WHT-F-XLN-HD-DNS-W/ CHLK IN TRAY

LS-GRY-F-XLN-FOSS FRAGS-HD-DNS-TR
GLAU

LS-GRY-F-XLN-V-FOSS-TR GLAU-TR
INTER-PRT POR-DULL WHT MIN FLOR-

LS A.A. CHLKY

LS-TN-F-XLN-HD-DNS TR FOSS

LS-OFF WHT-F-XLN-FOSS-CHLKY-PR
INTER-GRN POR-DULL WHT MIN FLOR-NO VIS
SHOW

LS-GRY/WHT-F-XLN-CHLKY-SHLY IP-NO VIS
POR-DULL WHT MIN FLOR

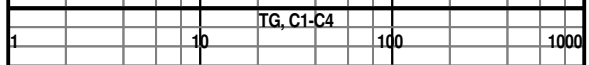
LS-TN-M-GRN-CD INTER-GRN POR-TR

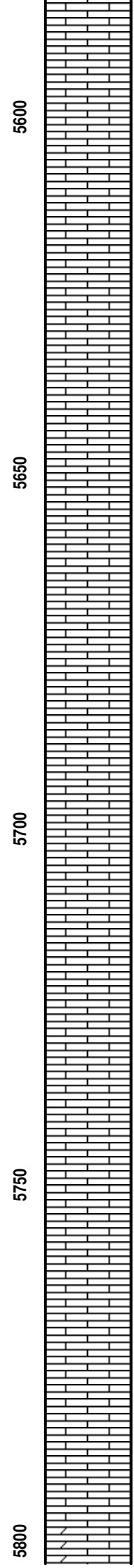
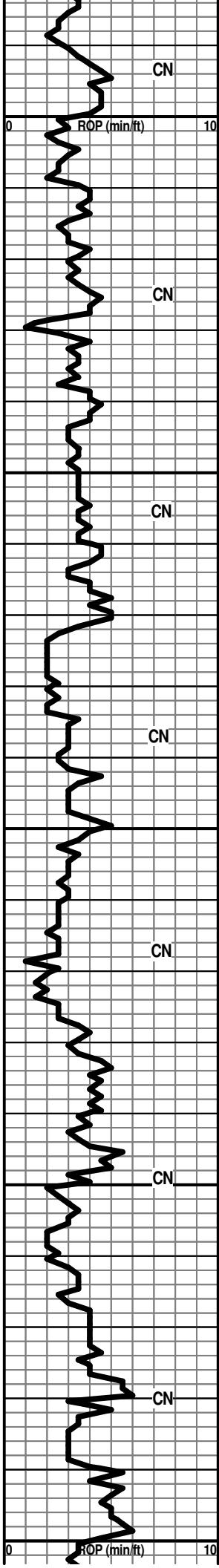
WT. 9.1
VIS 55
LCM #6

WT. 9.0
VIS 52
LCM #4

WT. 9.2
VIS 53
LCM #4

TG, C1-C4





LS-TN/GRN-CD INTERPNT CR TR
FOSS-SEMI-CHLKY-DULL WHT MIN FLOR

LS-GRY-V-F-XLN-HD-DNS

LS-OFF WHT/GRY SH-F-XLN-HD-PR VUG
POR-DULL WHT FLOR

LS-GRY-F-XLN-BLOCKY-HD-DNS

LS-OFF WHT/GRY-F-XLN-V-CHLKY-FR
VUG/FAC POR-SCATT BRITE FLOR-NO VIS
CUT

LS-OFF WHT-F-XLN W/ TR CRS XLN ON
EDGE-FOSS-SHLY IP-DULL WHT FLOR

LS A.A.

LS-GRY-F-XLN-V-VUGGY POR-NO VIS
FLOR-NO VIS SHOW W/
CHRT-GRY-OPQ-FRSH-TR FRAC

LS-OFF WHT-F-XLN-CHLKY-DNS W/ CHRT IN
TRAY

LS-GRY-M-XLN-CHLKY-SHLY-TR SM VUG
POR-DULL WHT MIN FLOR-NO VIS SHOW

LS-OFF WHT/W GRN SPECS-M-XLN-SLI
CHLKY-FOSS FRAGS-ABUNDT GLAU XLS
IMBD-TR FOSS VUG/INTER-GRN POR-NO VIS
FLOR-NO VIS SHOW

LS-OFF WHT/GRY W/ GRN
SPECS-F-XLN-HD-DNS-NO VIS POR-DULL WHT
FLOR-

LS-TN/GRY W/ GRN SPECS-M-XLN-BRIT-TR
CHLK-FOSS-FR INTER-XLN/SHALLOW VUG
POR-NO VIS FLOR

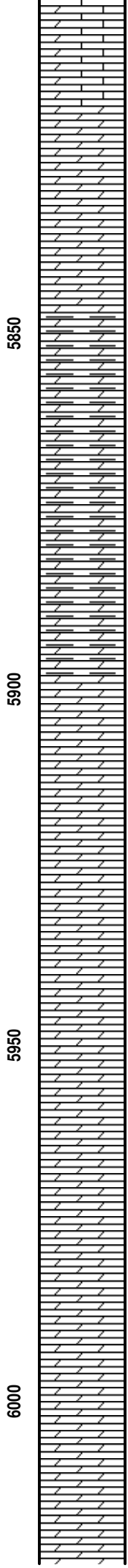
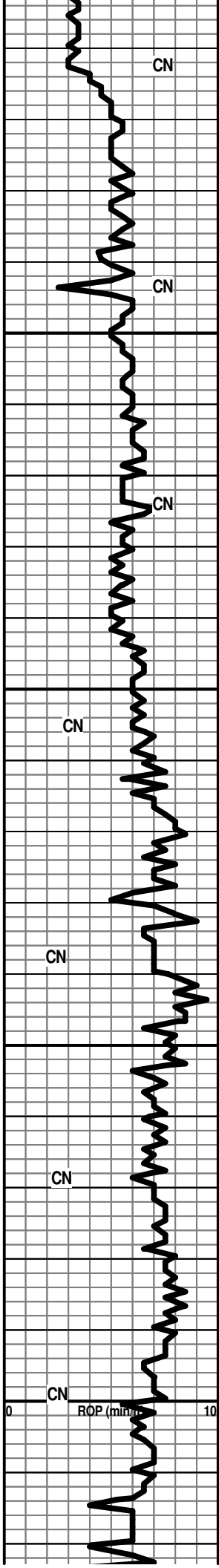
LS-OFF WHT/GRY W GRN
SPECS-F-XLN-FOSS-HD-DNS

LS-GRY/OFF WHT W/ GRN
SPECS-M-XLN/GRN-TR CHLK-NO VIS POR

LS-OFF WHT-V-F-XLN-V-FOSS-HD-DNS

LS-OFF WHT-GRY-W/ GRN

WT.	VIS	LCM #	TG, C1-C4
WT. 9.1	VIS 45	LCM #6	
			1 10 100 1000
WT. 9.1	VIS 45	LCM #6	
WT. 9.1	VIS 59	LCM #7	
WT. 9.2	VIS 48	LCM #6	
			TG, C1-C4



ES-GY W/HT-GRN W/GRN
 SPECS-M-XLN-CHLKY-NO VIS POR-DULL WHT
 MIN FLOR

DOLO-GRY-F-XLN-W/ GRN
 SPECS-SHLY-HD-DNS

DOLO-GRY W/ GRN
 SPECS-V-F-GRN-ARGIL-NO VIS FLOR

DOLO-GRY/GRN-V-F-GRN-V-SHLY-HD-DNS W/
 NO VIS FLOR

DOLO A.A.

SH-BLK-CARB-SPLNTY

DOLO-GRY-F-GRN-SHLY W/
 SH-BLK-GRY-SPLNTY

DOLO AND SHALES A.A.

DOLO-GRY-V-F-XLN (LITHO)-TR GLAU-HD-DNS
 W/ V-SM-PYR XLS

DOLO A.A.

DOLO-GRY W/ SM PYR XLS-V-SHLY

DOLO-GRY-SHLY A.A.

DOLO-GRY-SHLY W/
 CHRT-NODULES-TRANS-OPQ-FRSH

DOLO -GRY-F-XLN-SHLY-HD-DNS

	WT. 9.1 VIS 48 LCM #6		
	WT. 9.1 VIS 47 LCM #5		
	WT. 9.1 VIS 54 LCM #6		
	WT. 8.2 VIS 59 LCM #6		
	WT. 9.2 VIS 52 LCM #6		
	WT. 9.1 VIS 52 LCM #8		
	WT. 9.2 VIS 61 LCM #8		
1	10	TG, C1-C4	100 1000

DOLO-DK GRY-V-F-XLN-SHLY-HD-DNS W/
CHRT-GRY-OPQ-FRSH

DOLO A.A. W/ CHRT-GRY-OPQ-FRSH

DOLO-DK GRY-F-XLN-BLOCKY-SHLY-HD-DNS

SH-BLK-CARB SPLNTY

DOLO-OFF
WHT-GRNISH-F-GRN-FOSS-SHELLS-FR
INTER-GRN/FOSS VUG POR-DULL WHT MIN
FLOR

DOLO-LT GRY-F-XLN-HD-DNS-CHRTY

DOLO-LT GRY-F-XLN-TR GLAU-HD-DNS

DOLO-GRY-F-XLN-SHLY-W/ ABUNDT
CHRT-TRANS-OPQ-FRSH IN TRAY

DOLO-V-SHLY

DOLO AND SH-LT GRY-W/
CHRT-GRY-OPQ-FRSH

DOLO-SHALE-CHRT A.A.

VIOLA 6208' (-4474')
LOG 6210' (-4476')

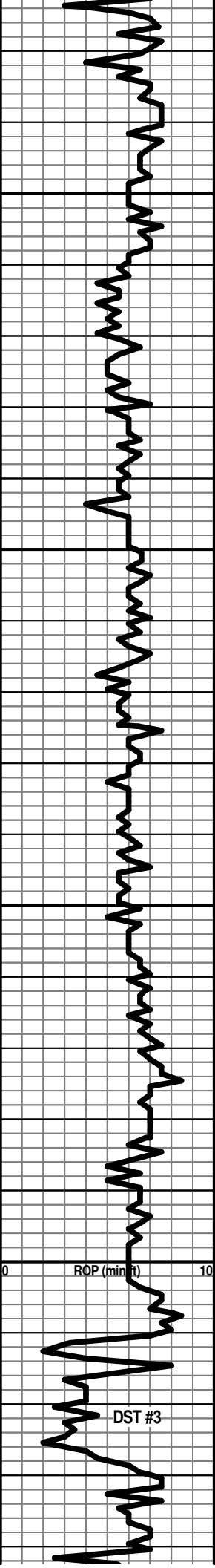
DOLO-TN-F-GRN-PR TO FR INTER-GRN
POR-DULL WHT MIN FLOR-NO VIS CUT-NO
ODOR-TR GAS BUB

DOLO-LT BRN-F-XLN-HD-DNS-NO VIS
FLOR-NO VIS SHOW W/
CHRT-TRANS-OPQ-FRSH-PYR XLS IN TRAY

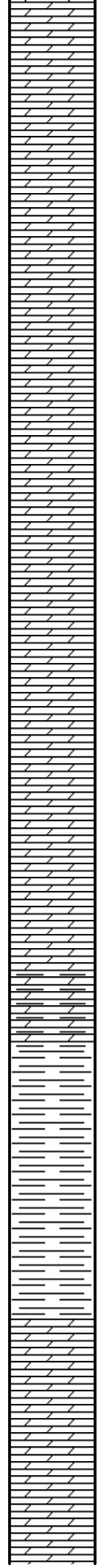
HW 10 UNIT GAS
KICK

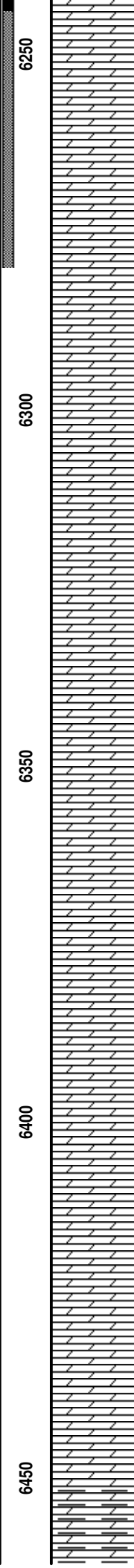
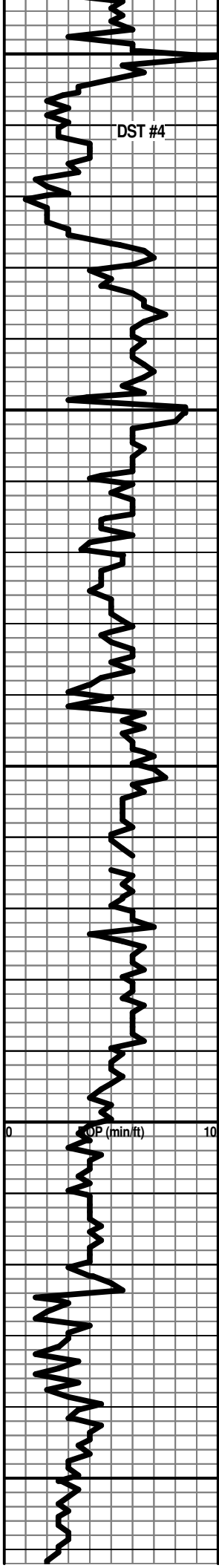
1 10 100 1000
TG, C1-C4

DST #3
HW-60
UNIT 6208' TO 6244'
GAS IBLW-WK BLW 1
KICK MIN THEN DIED
FBLW-NO BLW
REC 100 DRILLING
MUD
15/30/15/30
IFP-46.29-48.53
FFP-53.07-66.12
SIP-48.53-3093.21
HP-3097.04-3040.47



6050
6100
6150
6200





6254' (-4520')

DOLO-LT BRN-F-XLN-SUCRO-PR INTER-XLN
W/ TR FR INTER-XLN POR-TR SCATT FLOR-NO
VIS CUT

DOLO-LT BRN-F-M-XLN-PR TO FR
INTER-XLN/SM VUG POR-SCATT BRITE WHT
FLOR-(2 PC V-LT FLSH CUT) NO ODOR

DOLO-OFF WHT-F-XLN-HD-DNS TR CHLK IN
TRAY

DOLO A.A. CHLKY W/
CHRT-GRY-OPQ-FOSS-FRSH

DOLO-CRM-F-XLN-HD-DNS TR SH IMBD IP-PYR
XLS-CHRT

DOLO-A.A.

DOLO-OFF WHT-F-XLN-FOSS-HD-DNS-TR
CHRT IN TRAY

DOLO-CRM-M-XLN-PR TO FR INTER-XLN
POR-NO VIS FLOR-NO VIS SHOW

DOLO-OFF WHT-V-CRS-XLN-GD-INTER-XLN
POR-DULL WHT MIN FLOR-NO VIS SHOW

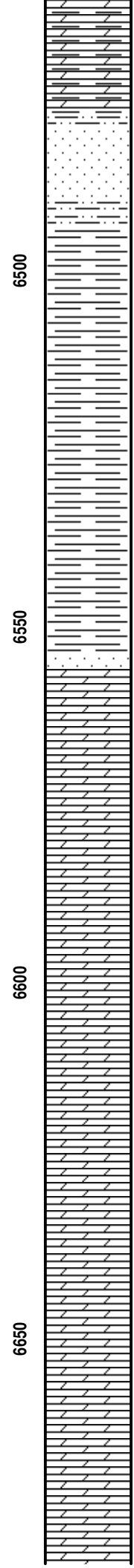
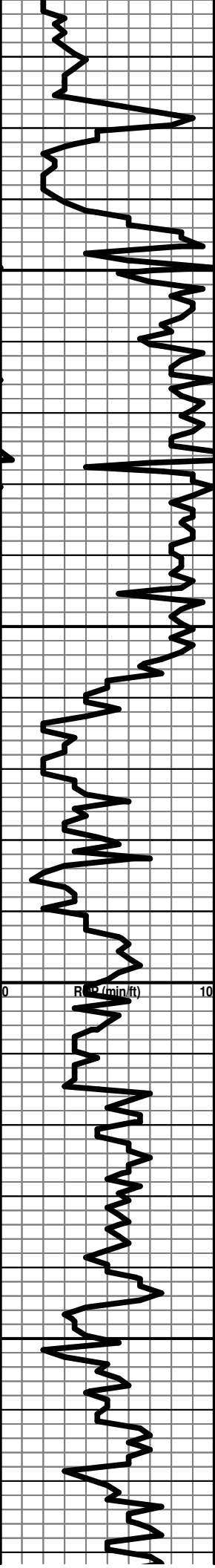
DOLO-CRM-M-XLN-SNDY-PR TO FR INTER-XLN
POR-TR DULL WHT MIN FLOR-NO VIS SHOW

HW-100 PLUS GAS
KICK

DST #4
6245' TO 6280'
IBLW-BOB IN 1
MIN
FBLW-STRNG
BLW BOB IN 1 MIN
REC 1710 SALT
WATER
5/60/45/90
IFP-884.47-978.27
FFP-946.78-1707.76
FFP-946.78-1707.76
SIP-2461.73-2462.81
HP-3118.35-2988.55

HW-GAS KICK OFF
CHART

TG, C1-C4
1 10 100 1000



SIMPSON SAND 6482' (-4748')
LOG 6485' (-4751')

SS-FRSTY WHT TO TRANS-TR LT BRN
STN-M-CRS GRN-TT-RND TO SUB-RND-FR
SRTE-DOLO CMT-FR TO GD INTER-GRN
POR-NO VIS FLOR-NO VIS CUT

HW 15 UNIT GAS
INCRS-CHROMO
NOT WORKING

CFS

SH-GRY-GRN-BLKY

SHALES-MULTI-COLORED

SH-GRY-GRN-TURQ-SPLNTY-SNDY

**ARBUCKLE 6563' (-4829')
LOG 6560' (-4826')**

SS-FRSTYBRN/TRANS-M-GRN-FRI- RND-WELL SRTE-TR
GLAU-TR SH IMBD-PYR XLS IP-NO VIS FLOR-NO VIS
SHOW

DOLO-TN-F-XLN-SUCRO-SNDY-BRIT-FR INTER-XLN
POR-NO VIS FLOR-NO VIS SHOW

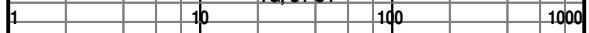
DOLO-TN-F-XLN-FOSS-TR SND-HD-DNS

CFS

SS-V-WHT-F-GRN-DOLO CMT-RND TO SUB-RND-WELL
SRTE-FR INTER-GRN POR-BRITE WHT FLOR-FR TO GD
FLSH CUT-FNT ODOR

DOLO-OFFWHT/TN-M-XLN-FOSS-SND GRN
IMBD IP-PR TO FR INTER-XLN POR-DULL WHT
MIN FLOR-W/ TR 1 PC BRITE WHT FLOR-TR
FLSH CUT TO NO VIS CUT

TG, C1-C4



DOLO-TN-F-XLN-SUCRO-NO VIS POR TO FR FRAC POR
IP-DULL YEL FLOR-NO VIS CUT

DOLO-OFF WHT-M-XLN TO CRS XLN-FR
INTER-XLN POR-NO VIS FLOR-NO VIS SHOW
W/ CHRT-GRY-OPQ-FRSH IN TRAY

HW GAS KICK 37
UNIT

DOLO A.A.

DOLO-TN-F-XLN-CHLKY IP-TR FRAC POR TO NO VIS
POR-BRITE YEL FLOR-NO VIS CUT W/
CHRT-GRY-OPQ-FRSH

DOLO-TN-F-XLN-SUCRO-HD-DNS

DOLO-GRY-F-XLN-CHRTY-HD-DNS W/ PYR XLS TR SH LT
GRY IMBD

DOLO-LT GRY-F-XLN-TR FOSS-TR OOL-PR
INTER-XLN-POR-NO VIS FLOR

DOLO-GRY-M-XLM-OOL IP-PR TO FR INTER-GRN/SM VUG
POR-DULL YEL FLOR-NO VIS CUT

HW GAS KICK 22
UNIT

DOLO-GRY/TN-F-XLN-FOSS-NO VIS POR-DULL
YEL FLOR-NO VIS SHOW

DOLO-GRY/TN-F-M-XLN-TR FOSS-TR
INTER-XLN POR-DULL YEL FLOR-NO VIS
SHOW-PYR XLS IN TRAY

6700

6750

6800

60

ROP (min/ft) 0 10

LTD=6800'
RTD=6806'

TG, C1-C4 1 10 100 1000