

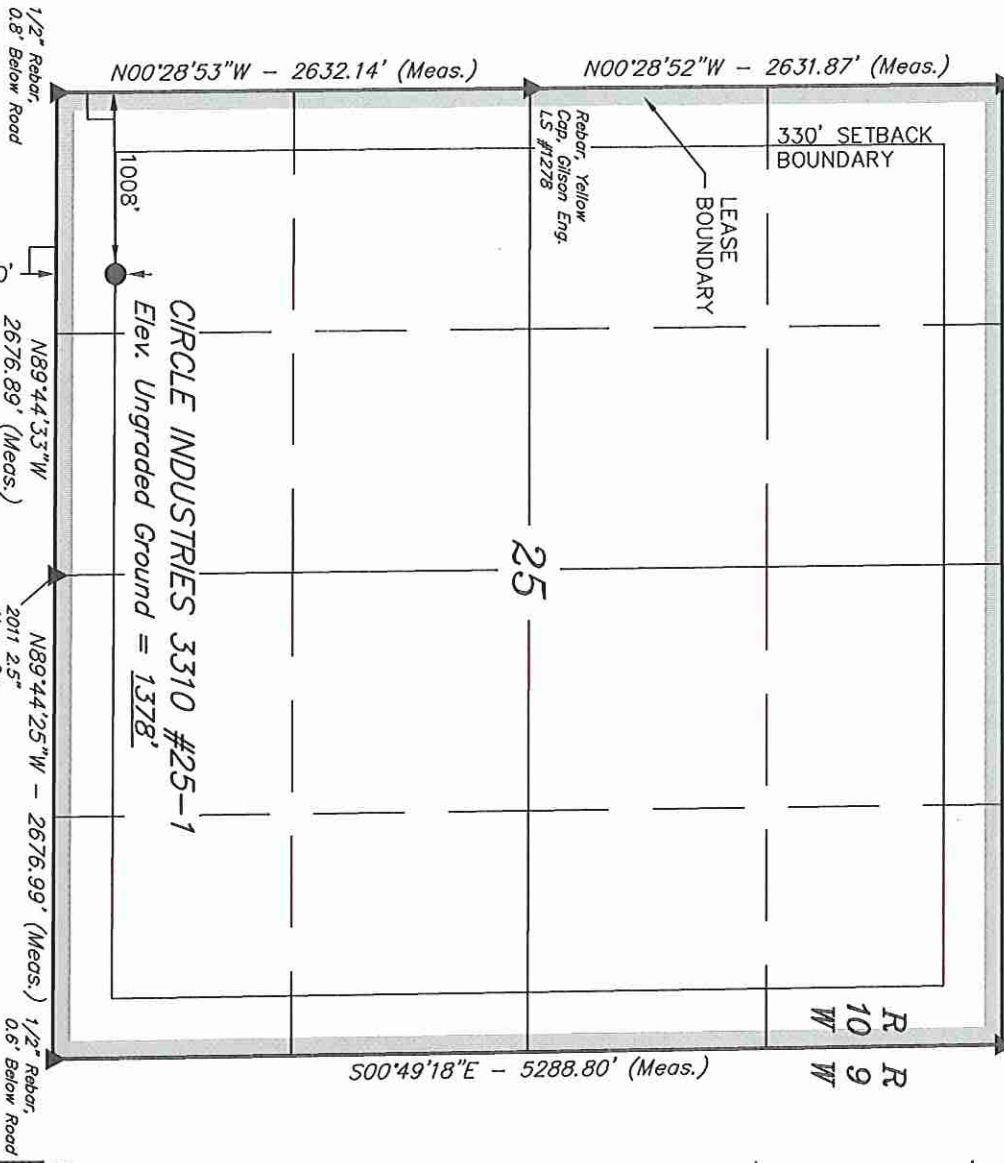
T33S, R10W, 6th P.M.

SGOMI

1/2" Rebar, Yellow Cap, Gison Eng. LS #1278

N89°59'50"E - 5322.22' (Meas.)

4"x4" Concrete Post, 0.5' High



CIRCLE INDUSTRIES 3310 #25-1
Elev. Ungraded Ground = 1378'

LEGEND:

- └ = 90° SYMBOL
- = PROPOSED WELL HEAD.
- ▲ = SECTION CORNERS LOCATED.

(NAD 83)
LATITUDE = 37°08'20.00" (37.138889)
LONGITUDE = 98°21'46.51" (98.362919)
(NAD 27)
LATITUDE = 37°08'19.92" (37.138867)
LONGITUDE = 98°21'45.25" (98.362569)

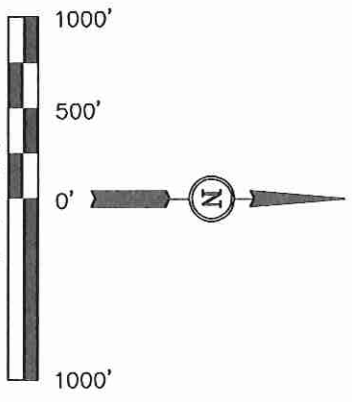
Well location, CIRCLE INDUSTRIES 3310 #25-1, located as shown in the SW 1/4 SW 1/4 of Section 25, T33S, R10W, 6th P.M., Barber County, Kansas.

BASIS OF ELEVATION

SPOT ELEVATION LOCATED AT THE NORTHEAST CORNER OF SECTION 22, T33S, R7W, 6th P.M. TAKEN FROM THE ANTHONY, QUADRANGLE, KANSAS, HARPER COUNTY, 7.5 MINUTE QUAD (TOPOGRAPHIC MAP) PUBLISHED BY THE UNITED STATES DEPARTMENT OF THE INTERIOR, GEOLOGICAL SURVEY. SAID ELEVATION IS MARKED AS BEING 1348 FEET.

BASIS OF BEARINGS

BASIS OF BEARINGS IS A G.P.S. OBSERVATION.



CERTIFICATE
THIS IS TO CERTIFY THAT THE ABOVE PLAT WAS PREPARED FROM FIELD NOTES OF ACTUAL SURVEYS MADE BY ME (OR UNDER MY SUPERVISION AND THAT THE SAME ARE TRUE AND CORRECT TO THE BEST OF MY KNOWLEDGE AND BELIEF.

JOHN W. WILSON
REGISTERED LAND SURVEYOR
REGISTRATION NO. 1183
STATE OF KANSAS
LS-7380

REVISED: 10-14-11 C.C.

UTAH ENGINEERING & LAND SURVEYING
85 SOUTH 200 EAST - VERNAL, UTAH 84078
(435) 789-1017

SCALE 1" = 1000'	DATE SURVEYED: 09-13-11	DATE DRAWN: 09-20-11
PARTY L.S. K.H. J.J.	REFERENCES G.L.O. PLAT	
WEATHER WARM	FILE SGOMI	