



TRILOBITE TESTING, INC.

DRILL STEM TEST REPORT

American Energies Corp.

Gartrell #1-35

155 N Market
STE 710
Wichita Ks. 67202+1821
ATTN: Dave Goldak

35-6s-20w Rooks

Job Ticket: 44253

DST#: 2

Test Start: 2011.09.21 @ 12:40:05

GENERAL INFORMATION:

Formation: **Arbuckle**

Deviated: No Whipstock: ft (KB)

Time Tool Opened: 14:20:30

Time Test Ended: 17:47:59

Test Type: Conventional Bottom Hole (Reset)

Tester: Andy Carreira

Unit No: 39

Interval: 3632.00 ft (KB) To 3640.00 ft (KB) (TVD)

Reference Elevations: 2155.00 ft (KB)

Total Depth: 3640.00 ft (KB) (TVD)

2150.00 ft (CF)

Hole Diameter: 7.88 inches Hole Condition: Fair

KB to GR/CF: 5.00 ft

Serial #: 8352 Outside

Press @ RunDepth: 18.11 psig @ 3633.00 ft (KB)

Capacity: 8000.00 psig

Start Date: 2011.09.21 End Date: 2011.09.21

Last Calib.: 2011.09.21

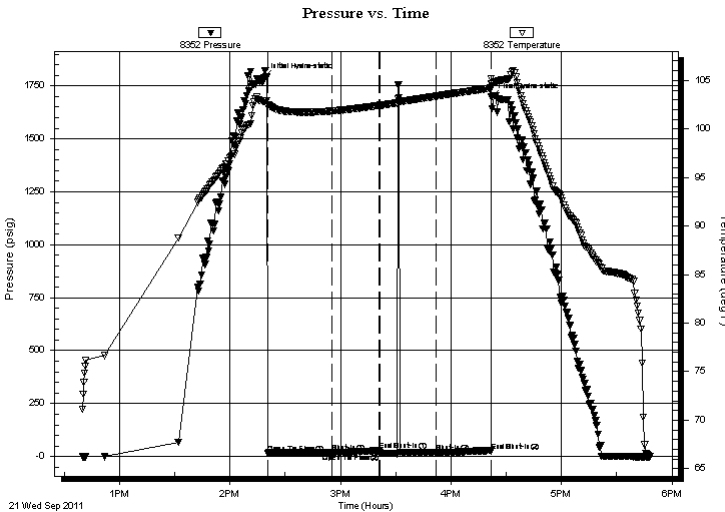
Start Time: 12:40:05 End Time: 17:47:59

Time On Btm: 2011.09.21 @ 14:18:30

Time Off Btm: 2011.09.21 @ 16:22:00

TEST COMMENT: IF:(30min) Blow Died in 2 min.
IS:(30min) No Return
FF:(30min) No Blow, Flushed, Surged, No Blow.
FS:(30min) No Return

PRESSURE SUMMARY



Time (Min.)	Pressure (psig)	Temp (deg F)	Annotation
0	1790.39	102.88	Initial Hydro-static
2	16.85	102.29	Open To Flow (1)
37	18.15	101.85	Shut-In(1)
63	27.58	102.43	End Shut-In(1)
63	16.08	102.43	Open To Flow (2)
94	18.11	103.38	Shut-In(2)
124	26.81	104.21	End Shut-In(2)
124	1696.47	104.66	Final Hydro-static

Recovery

Length (ft)	Description	Volume (bbl)
2.00	Mud	0.01

* Recovery from multiple tests

Gas Rates

Choke (inches)	Pressure (psig)	Gas Rate (Mcf/d)



**TRILOBITE
TESTING, INC.**

DRILL STEM TEST REPORT

FLUID SUMMARY

American Energies Corp.

Gartrell #1-35

155 N Market
STE 710
Wichita Ks. 67202+1821
ATTN: Dave Goldak

35-6s-20w Rooks

Job Ticket: 44253

DST#: 2

Test Start: 2011.09.21 @ 12:40:05

Mud and Cushion Information

Mud Type: Gel Chem

Cushion Type:

Oil API:

deg API

Mud Weight: 9.00 lb/gal

Cushion Length:

ft

Water Salinity:

ppm

Viscosity: 58.00 sec/qt

Cushion Volume:

bbf

Water Loss: 6.80 in³

Gas Cushion Type:

Resistivity: ohm.m

Gas Cushion Pressure:

psig

Salinity: 600.00 ppm

Filter Cake: inches

Recovery Information

Recovery Table

Length ft	Description	Volume bbf
2.00	Mud	0.010

Total Length: 2.00 ft Total Volume: 0.010 bbf

Num Fluid Samples: 0

Num Gas Bombs: 0

Serial #:

Laboratory Name:

Laboratory Location:

Recovery Comments:

Pressure vs. Time

