

TRANS PACIFIC Oil Corp.
JARVIS #2

2462

1925' FSL 2110' FEL
5 175 24 W
Ness Kan

2453

Duke Rib #4

KB

CASING
8 7/8" @ 224

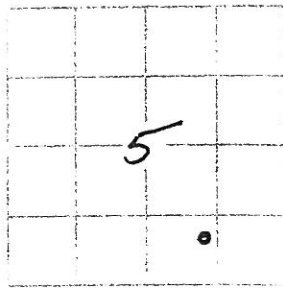
9/22/11
4535
3700

10/4/11
4536
chem

ELECTRICAL SURVEYS
Dual Comp Den
Micro

SAMPLES	3800	TO	RTD
GRINDING TIME KEPT	3600	TO	RTD
SAMPLES EXAMINED FROM	3800	TO	RTD
GEOLOGICAL SUPERVISOR FROM	3750	TO	RTD
GEOLOGIST ON WELL	Michael R. Kidwell		

FORMATION TOPS	LOG	SAMPLES
Anhydrite	1805-1657	1803
B/Anhy	1834-1628	1834
Heebner	3819-1357	3817
Lansing	3861-1399	3860
B/KC	4199-1736	4191
Ft. Scott	4359-1897	4357
Che. Sh.	4385-1923	4382
Miss. Dolomite	4458-1996	4457

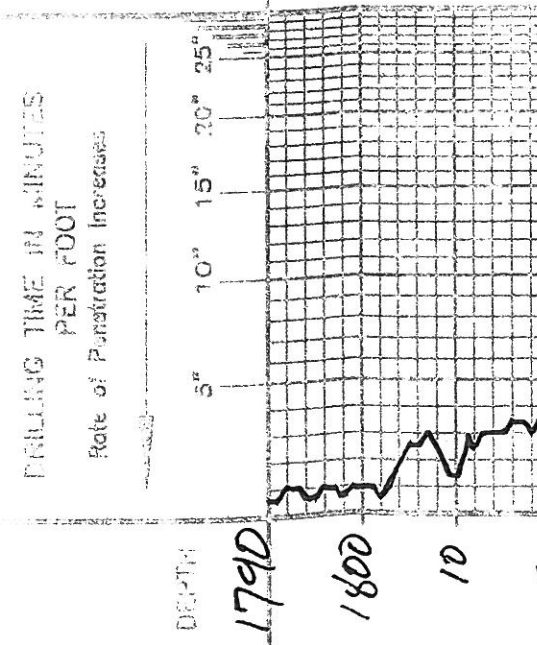


REMARKS

LEGEND

- [Symbol] Anhydrite
- [Symbol] Salt
- [Symbol] Sandstone
- [Symbol] Sand
- [Symbol] Shell
- [Symbol] Claystone
- [Symbol] Shale
- [Symbol] Gypsum
- [Symbol] Siltstone
- [Symbol] Sandstone
- [Symbol] Sand
- [Symbol] Shell
- [Symbol] Claystone
- [Symbol] Shale
- [Symbol] Gypsum
- [Symbol] Siltstone
- [Symbol] Sandstone
- [Symbol] Sand
- [Symbol] Shell
- [Symbol] Claystone
- [Symbol] Shale
- [Symbol] Gypsum

SCALE

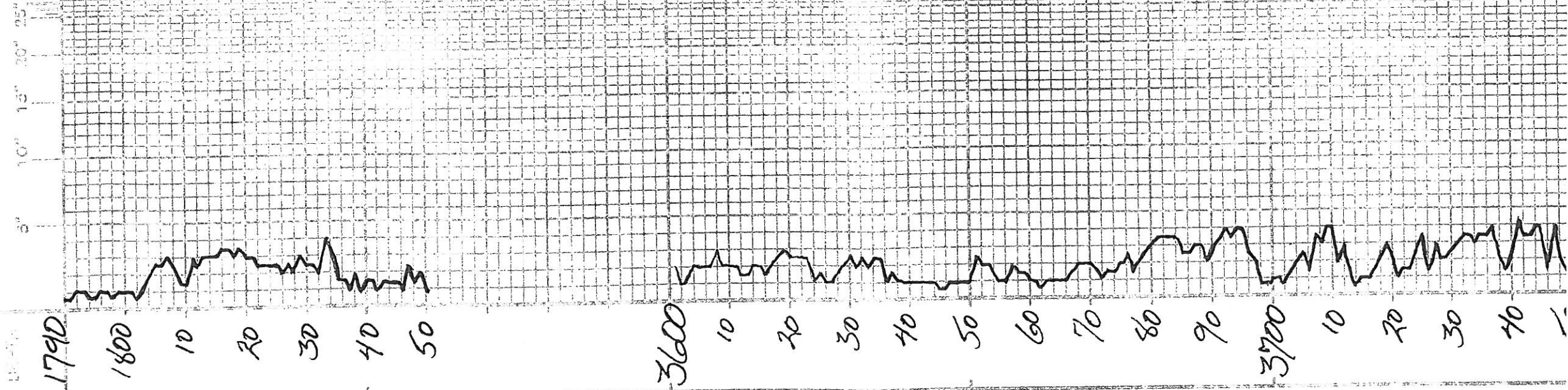


LITHOLOGY

SAMPLE DESCRIPTION

Anhydrite 1805-1657
E-log
B/Anhy 1834-1628

PERFORE TIME IN MINUTES
PER FOOT
Scale of Penetration Inches

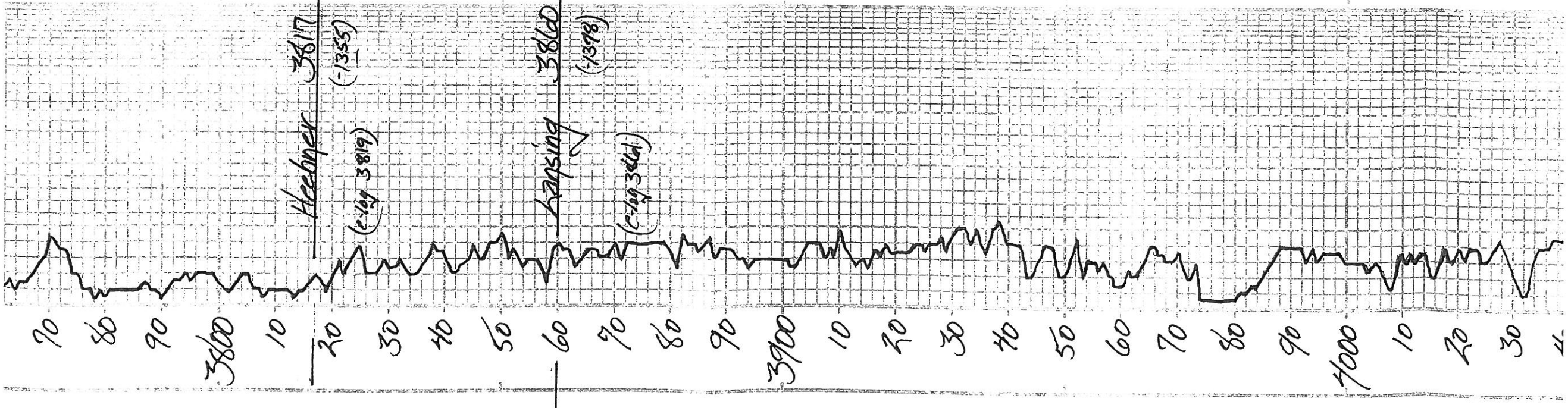


E-104
1805 +657

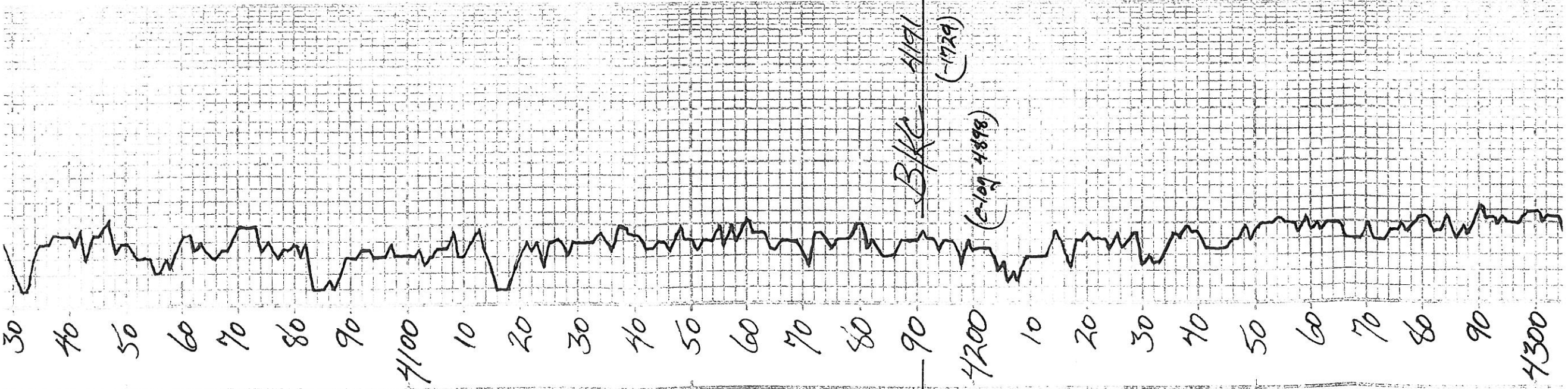
Anhydrite

1834 +628

B/Anhy



LS-tan vr fn x/h
 SL-CK
 LS-tan qm vr fn x/h
 SL-ool/ross
 Chrt-gray-ool/ooly fresh
 LS-bm tan fn x/h foss
 rangi foss
 SH-bk carb
 LS-lt gray erm vr fn x/h
 Sltsh-gray qm
 LS-wht erm fn x/h
 Chrt-wht
 Sh-gray
 LS-wht erm vr fn x/h
 ool sent foss
 Chrt-wht fresh
 LS-lt gray vr fn x/h
 SL-ool/ool
 LS-tan lt gray vr fn x/h
 ool sent foss
 SL-ool/ool
 SH-gray
 LS-tan vr fn x/h
 SL-ool/ool
 sent foss
 SL-ool/ool
 LS-erm lt gray vr fn x/h
 ool
 SH-gray
 LS-gray vr fn x/h
 Sltsh-red qm
 LS-erm vr fn x/h
 ool SL-ool/ool
 SH-gray
 LS-erm vr fn x/h
 SL-ool/ool
 Chrt-erm
 LS-lt gray erm vr fn x/h
 ool/ool
 SH-gray
 LS-tan vr fn x/h
 SL-ool/ool
 SH-gray
 LS-lt gray erm vr fn x/h
 SH-gray
 LS-gray vr fn x/h
 LS-lt gray erm vr fn x/h
 Chrt-wht fresh trace



LS-Hgray crm vr fmxh
Chrt-wht fresh trace
Sh-blk carb

LS-crm tan vr fmxh
sl sec xln

LS-Htan vr fmxh
ool
Chrt-crm Hgray
Sh-gray

LS-Htan vr fmxh
ool

Sh-gray

LS-tan vr fmxh

LS-crm vr fmxh
ool
Sh-gray blk

LS-Hgray vr fmxh chrt-
Chrt fresh

Sh-gray

LS-tan fmxh ool
sl sec xln

LS-crm Hgray vr fmxh
ool

Sh-slshtn-gray Hgray
LS-crm vr fmxh
ool

Sh-gray

LS-Hgray crm vr fmxh
ool
sl sec xln

Sh-gray

LS-Htan crm vr fmxh
ool
sl sec xln

LS-gray vr fmxh

Sh-gray

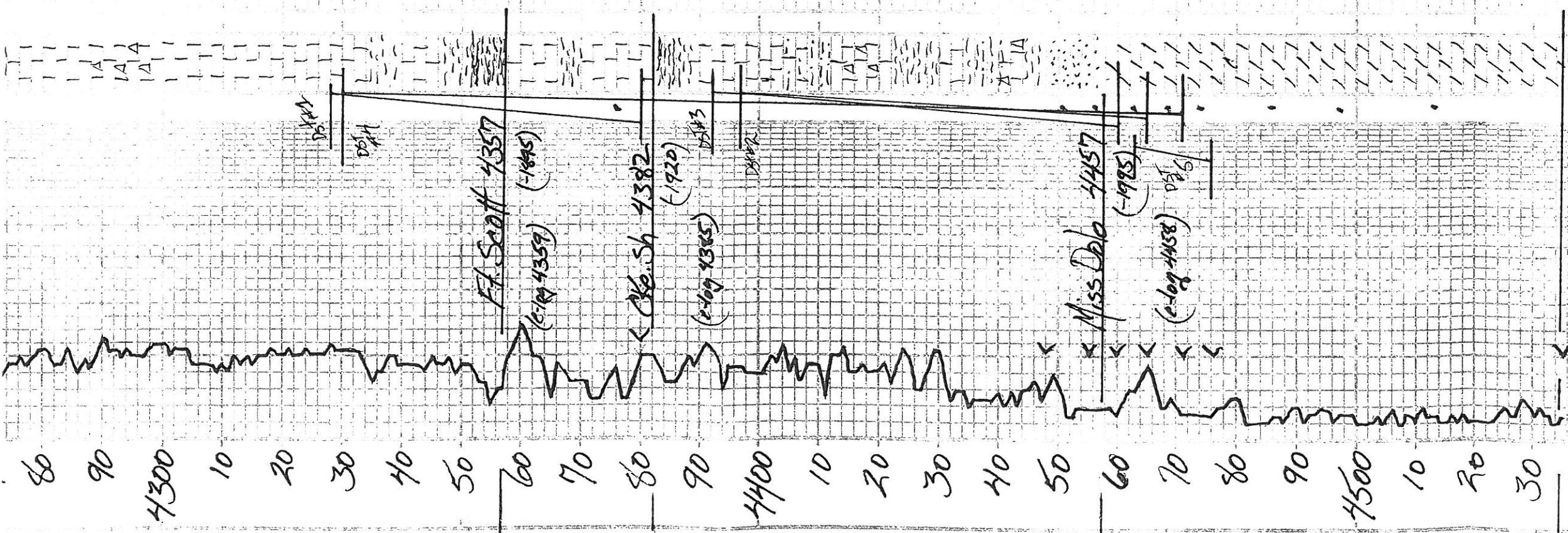
LS-gray vr fmxh

LS-Hgray vr fmxh

Sh-gray

LS-Htan gray vr fmxh

LS-gray vr fmxh
ool
Chrt-gray blk



LS-Htan grv v. f. xln

LS-gry v. f. xln
Chrt. gry blk

LS-Htan erm v. f. xln

LS-gry v. f. xln

Sh-gry

LS-gry v. f. xln

Sh-gry

Sh-blk carb

LS-Htan grv v. f. xln
ool. red. mass
sl. sec. xln

Sh-gry

LS-tan f. xln
ool.
mass
br. chrt. blk
ool. SFO sl. sec. xln
tan stn

Sh-blk

LS-gry v. f. xln

LS-erm v. f. xln
sl. ool. sl. sec. xln

Sh-sltsh-gry grv qm

LS-gry v. f. xln

Chrt. gry fresh blk

Sh-gry qm

LS-tan med xln ool

Sh-kani color

Sltsh-red Htan

Chrt. gry blk

Sltsh red gr. sort
sub. end. SFO
ool. SFO ool.

Dolo - erm v. f. xln
mass
ool. SFO
ool. SFO
ool. SFO
ool. SFO
ool. SFO
ool. SFO

Dolo - erm tan v. f. xln
ool. SFO
ool. SFO
ool. SFO
ool. SFO
ool. SFO
ool. SFO

Dolo - erm v. f. xln
ool. SFO
ool. SFO
ool. SFO
ool. SFO
ool. SFO
ool. SFO

Dolo - erm tan v. f. xln
ool. SFO
ool. SFO
ool. SFO
ool. SFO
ool. SFO
ool. SFO

Dolo - erm tan v. f. xln
ool. SFO
ool. SFO
ool. SFO
ool. SFO
ool. SFO
ool. SFO

Dolo - erm tan v. f. xln
ool. SFO
ool. SFO
ool. SFO
ool. SFO
ool. SFO
ool. SFO

Dolo - erm v. f. xln
ool. SFO
ool. SFO
ool. SFO
ool. SFO
ool. SFO
ool. SFO

DST #1

4328-4380
30"-45"-30"-30"
1st open - 1/4"
2nd open - N.B.
Rec: 5' 6"
ISIP 4103
FSIP 51
IFP 8-10
FFP 10-12
IHP 2100
FHP 2099

DST #2

4397-4460
30"-75"-60"-60"
1st open - 1/4"
2nd open - N.B.
Rec: 7' 6"
20' 0"
27' 70"
ISIP 1182
FSIP 964
IFP 9-12
FFP 15-20
IHP 2148
FHP 2148

DST #3

4392-4465
30"-75"-60"-14"
1st open - 1/4"
2nd open - 1/2"
Rec: 10' 15"
25'
ISIP 1040
FSIP 1004
IFP 10-13
FFP 16-20
IHP 2139
FHP 2138

DST #4

4330-4471
30"-75"-60"-90"
1st open - 1/2"
2nd open - 1/4"
Rec: 12' 40"
50'
ISIP-1126
FSIP-1035
IFP 12-21
FFP 22-3
IHP 2120

RTD 44536

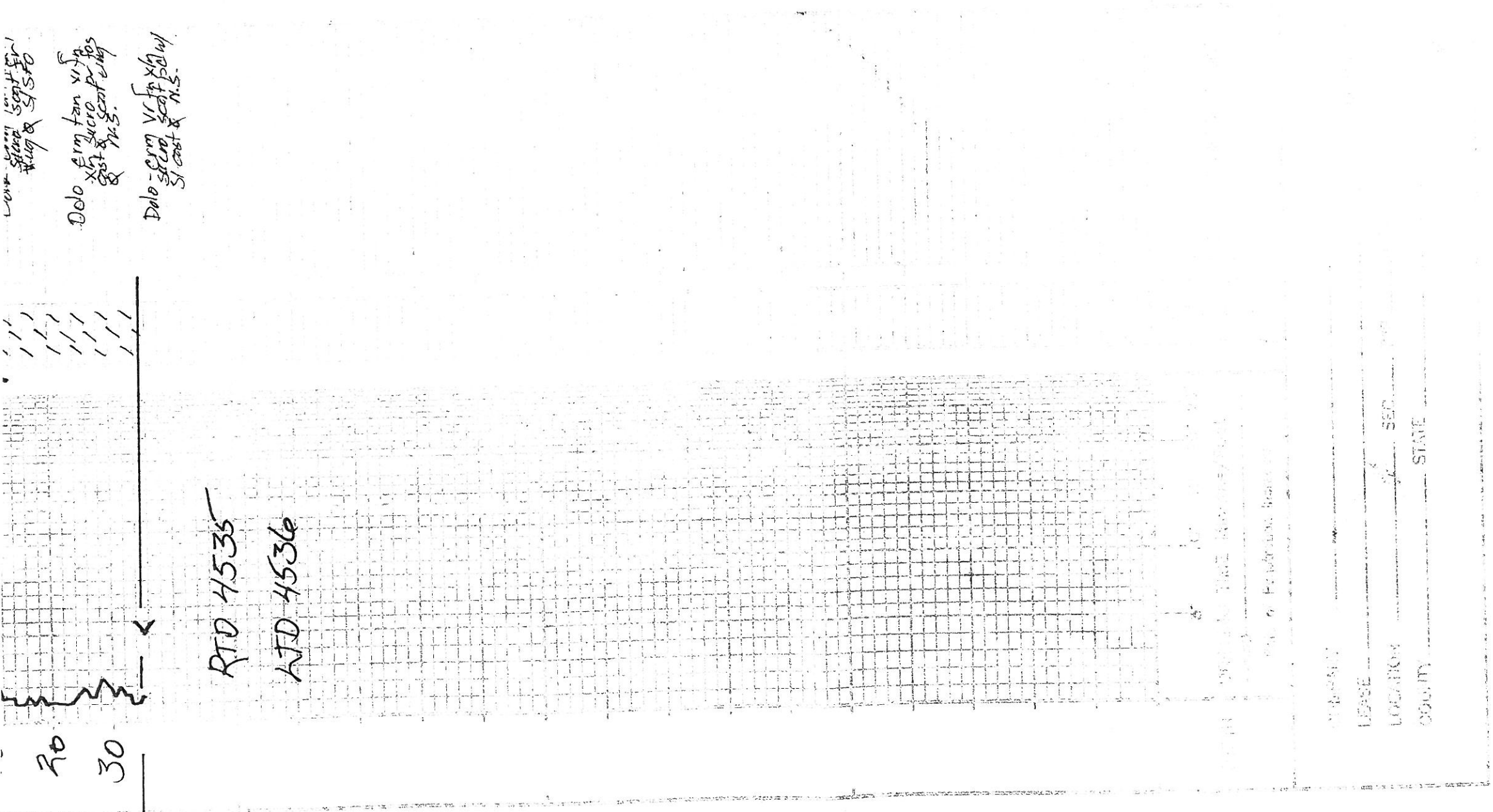
30
30
---<

Low - 1000' ...
Dolo - 1000' ...
Dolo - 1000' ...

Open - 1'4
Rec: 10
40'
50'
ISIP - 1126
FSIP - 1035
IFP 12-24
FFP 22-3
IHP 2120
FHP 2119

RTD 4535
RTD 4536

DST #5
4465-447
30-75-60:6
1st open - 1
2nd open - 1
Rec: 1
ISIP 1201
FSIP 1039
IFP 9-15
FFP 16-21
IHP 223
FHP 223



LEASE
LOCATION
COUNTY STATE