

American Energies
Corporation

155 N. Market, Suite 710, Wichita, KS 67202
316-263-5785, 316-263-1851 fax

**DRILLING REPORT
GRAHAM A-3**

AEC'S LEASE #: 10821025.003

LOCATION: NW SE SE NW Sect. 29-T9S-R20W

COUNTY: Rooks

API: 15-163-23983-0000

CONTRACTOR: W W Drilling, LLC

GEOLOGIST: Bob O'Dell

NOTIFY: American Energies Corp.

Mull Drilling Co., Inc.

SURFACE CASING: 8 5/8" 23# set @ 259'

PRODUCTION CASING: None

RTD: 3950, **LTD:** 3953

G.L.: 2273

K.B.: 2278

SPUD DATE: 9/24/11

COMPLETION DATE: 9/30/11

REFERENCE WELLS:

#1 – Graham A-1 - NW NE SE NW Sec. 29

#2 – Graham B-1 – N/2 NE S Sec. 29

FORMATION:	SAMPLE LOG:		COMPARISON:		ELECTRIC LOG TOPS:		COMPARISON:	
			#1 – A-1	#2 – B-1			#1 – A-1	#2 – B-1
Anhydrite	1789	+489	-3	-5	1780	+498	+6	+4
Heebner	3521	-1243	+2	Flat	3523	-1245	Flat	-2
Lansing	3562	-1284	-1	-1	3564	-1286	-3	-3
Base/Kansas City	3778	-1500	+2	Flat	3781	-1503	-1	-3
Arbuckle	3861	-1583	-7	-3	3862	-1584	-18	-4
RTD	3950							
LTD	3953							

9/24/11 MIRU - WW Drilling, LLC Rig #8. Spud well, drilled 12 1/4" surface hole. Ran in 6 jts 8 5/8" 23# X 253.12' set @ 259'. Cemented with 170 sx Common, 3% CC, 2% Gel. Plug down at 5:30 p.m. Cementing by Allied. Cement did circulate. Drilled out at 1:30 a.m. 9/25/11.

9/25/11 At 790' and drilling ahead.

9/26/11 At 2415' and drilling ahead.

9/27/11 At 3260' and drilling ahead.

9/28/11 At 3655' and in the process of running DST #1 from 3586 – 3655 (Lansing B-F zones). Times: 30-45-45-60. 1st opening: BOB in 15 minutes – no blow back, 2nd opening: Weak blow building to 7 minutes – no blow back. Recovered 110' MW with show of oil and 435' SW. IFP: 28-167, FFP: 171-280, ISIP: 801, FSIP: 749, IHP: 1739, FHP: 1712, chlorides: 105,000 PPM

9/29/11 At 3863' and in the process of running DST #2 from 3823 – 3868 (Arbuckle). Times: 30-60-30-60. 1st Opening: Weak BOB – died in 22", 2nd Opening – No blow. Recovered 10' M sp O. IFP: 25-34, FFP: 35-41, ISIP: 381, FSIP: 358. Will drill additional 5 feet, if no oil shows, will drill to 3925' and log hole.

9/30/11 Results DST #3: 3867 – 3875 (Arbuckle). Times: 30-60-30-60. Recovered 10' of wM (25% W, 75% M with show of oil. 1st Opening: weak blow thru-out surface to 1/4" bl. IHP: 1985, IFP: 22-32, ISIP: 395, FFP: 35-47, FSIP: 369, FHP: 1875.

RTD 3950', LTD 3953'. Logged by LogTech. Straddle. Plug hole as ordered. 25sx @3862', 25sx @ 1805', 100sx @ 1075', 40sx @ 310', 10sx@40', 30sx in rathole. Plug down @5pm. Rig released@7pm.

ALLIED CEMENTING CO., LLC. 038295

Federal Tax I.D.# 20-5975804

REMIT TO P.O. BOX 31
RUSSELL, KANSAS 67665

SERVICE POINT:
Russell KS

DATE <u>9-24-2011</u>	SEC. <u>29</u>	TWP. <u>9 S</u>	RANGE <u>20W</u>	CALLED OUT	ON LOCATION	JOB START <u>5:00 PM</u>	JOB FINISH <u>5:30 PM</u>
LEASE <u>Gratham "A"</u>	WELL # <u>3</u>	LOCATION <u>Paloo Ks. 1w 1/2 S. JATO</u>		COUNTY <u>Gratham</u>	STATE <u>KANSAS</u>	ROCKS. <u>6.3</u>	
OLD OR <u>NEW</u> (Circle one)							

CONTRACTOR W-W Dalg Rip # 8
 TYPE OF JOB Cement Subsea
 HOLE SIZE 12 1/4 TD. 260'
 CASING SIZE 8 5/8-20# DEPTH 259'
 TUBING SIZE DEPTH
 DRILL PIPE DEPTH
 TOOL DEPTH
 PRES. MAX MINIMUM
 MEAS. LINE SHOE JOINT
 CEMENT LEFT IN CSG. 20'
 PERFS.
 DISPLACEMENT 15 1/2 / 80L

OWNER 20'
 CEMENT AMOUNT ORDERED 170 Sx Comm.
3% c.c.
2% Gel
 COMMON 170 @ 16.25 2,762.50
 POZMIX @
 GEL 3 @ 21.25 63.75
 CHLORIDE 6 @ 58.20 349.20
 ASC @

EQUIPMENT
 PUMP TRUCK CEMENTER Glenn
 # 417 HELPER Woody
 BULK TRUCK
 # DRIVER Ron
 BULK TRUCK
 # DRIVER

HANDLING 179 @ 2.25 402.75
 MILEAGE 179/45/11 886.05
 3175.45 19.69 TOTAL 4464.25

REMARKS:

Ran 6 JOINTS OF 20# 8 5/8 CSG.
Set @ 259'
Received Circulation Cement of 170 Sx Comm.
242 Displace. 15 1/2 / 80L H₂O. + Shut in
@ 250 #.
Cement DID Circulate
TO SURFACE.
HANK'S

CHARGE TO: American Energies Corp.
 STREET
 CITY STATE ZIP

DEPTH OF JOB 259' 1125
 PUMP TRUCK CHARGE
 EXTRA FOOTAGE @
 MILEAGE 90 @ 7.00 630
 MANIFOLD @
 @
 @
 @
 @
 90 @ 4.00 360
 TOTAL 2115

PLUG & FLOAT EQUIPMENT

@
 @
 @
 @
 @

TOTAL
 SALES TAX (If Any) 200.05
 TOTAL CHARGES 4445 6579.25
 DISCOUNT 50/20 IF PAID IN 30 DAYS

PRINTED NAME Don Deutscher
 SIGNATURE [Signature]

1878.66

1876.05
(938.02)
4703.20
(940.64)

* note corrections

ALLIED CEMENTING CO., LLC. 038332

Federal Tax I.D.# 20-5975804

REMIT TO P.O. BOX 31
RUSSELL, KANSAS 67665

SERVICE POINT:

Russ 11

DATE <i>9/30/11</i>	SEC. <i>29</i>	TWP. <i>9S</i>	RANGE <i>20W</i>	CALLED OUT	ON LOCATION	JOB START <i>4:00p</i>	JOB FINISH <i>5:00p</i>
LEASE <i>Graham</i>	WELL # <i>A 43</i>	LOCATION <i>Polco 150 Sinto</i>			COUNTY <i>Polk</i>	STATE <i>Ks</i>	
<input checked="" type="radio"/> OLD OR NEW (Circle one)				2-03 6.3 all			

CONTRACTOR *New Drilling Co. & F*

TYPE OF JOB *PTA*

HOLE SIZE *3 1/2* T.D.

CASING SIZE DEPTH

TUBING SIZE DEPTH

DRILL PIPE *4 1/2* DEPTH *3,882*

TOOL DEPTH

PRES. MAX MINIMUM

MEAS. LINE SHOE JOINT

CEMENT LEFT IN CSG.

PERFS.

DISPLACEMENT

OWNER

CEMENT

AMOUNT ORDERED *230 9/4 4861 446*

COMMON	<i>155</i>	@	<i>16.25</i>	<i>2512.50</i>
POZMIX	<i>92</i>	@	<i>8.50</i>	<i>782.00</i>
GEL	<i>8</i>	@	<i>21.25</i>	<i>170.00</i>
CHLORIDE		@		
ASC		@		

<i>Fl. Seal 57"</i>	@	<i>2.70</i>	<i>153.90</i>
	@		
	@		
	@		
	@		
HANDLING <i>234</i>	@	<i>2.25</i>	<i>525.50</i>
MILEAGE <i>14/106/16 48</i>			<i>1178.00</i>

3348.40 *2618* TOTAL *5062.00*
SERVICE

DEPTH OF JOB			
PUMP TRUCK CHARGE			<i>1750.00</i>
EXTRA FOOTAGE	@		
MILEAGE <i>90</i>	@	<i>7.10</i>	<i>639.00</i>
MANIFOLD	@		
<i>200</i>	@	<i>4.10</i>	<i>820.00</i>

TOTAL *2340.00*

REMARKS:

<i>3882</i>	<i>25 skt</i>
<i>1805</i>	<i>25 skt</i>
<i>1075</i>	<i>100 skt</i>
<i>310</i>	<i>40 skt</i>
<i>90</i>	<i>10 skt</i>

Ret Htc 50skt

CHARGE TO: *American Energy*

STREET _____

CITY _____ STATE _____ ZIP _____

PLUG & FLOAT EQUIPMENT

	@		
<i>Reg 4.6 11y</i>	@		<i>NCC</i>
	@		
	@		

TOTAL _____

SALES TAX (If Any) *460.02*

TOTAL CHARGES *7302.02*

Thanks!

To Allied Cementing Co., LLC.
You are hereby requested to rent cementing equipment and furnish cementer and helper(s) to assist owner or contractor to do work as is listed. The above work was done to satisfaction and supervision of owner agent or contractor. I have read and understand the "GENERAL TERMS AND CONDITIONS" listed on the reverse side.

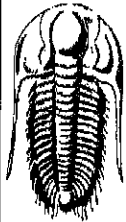
PRINTED NAME *Jim K... / Steve K...*

SIGNATURE *[Signature]*

Post-it® Fax Note	7671	Date <i>10/12/11</i>	# of pages <i>2</i>
To	From		
Co./Dept. <i>American Energy</i>	Co.		
Phone #	Phone #		
Fax # <i>316 263 1851</i>	Fax #		

2168.10
(1084.05)

5133.90
(1026.78)



**TRILOBITE
TESTING, INC.**

DRILL STEM TEST REPORT

American Energies Corporation

29-9s-20w Rooks KS

155N. Market
Ste 710
Wichita Ks 67202-1821
ATTN: Alan DeGood

Graham A#3

Job Ticket: 44565

DST#: 1

Test Start: 2011.09.28 @ 04:50:40

GENERAL INFORMATION:

Formation: **LKC B-F**

Deviated: No Whipstock: 0.00 ft (KB)

Time Tool Opened: 06:58:05

Time Test Ended: 11:46:34

Test Type: Conventional Bottom Hole (Initial)

Tester: Ray Schwager

Unit No: 42

Interval: **3586.00 ft (KB) To 3655.00 ft (KB) (TVD)**

Reference Elevations: 2278.00 ft (KB)

Total Depth: 3655.00 ft (KB) (TVD)

2273.00 ft (CF)

Hole Diameter: 7.85 inches Hole Condition: Fair

KB to GR/CF: 5.00 ft

Serial #: 6625

Inside

Press@RunDepth: 280.96 psig @ 3590.00 ft (KB)

Capacity: 8000.00 psig

Start Date: 2011.09.28

End Date:

2011.09.28

Last Calb.: 2011.09.28

Start Time: 04:50:40

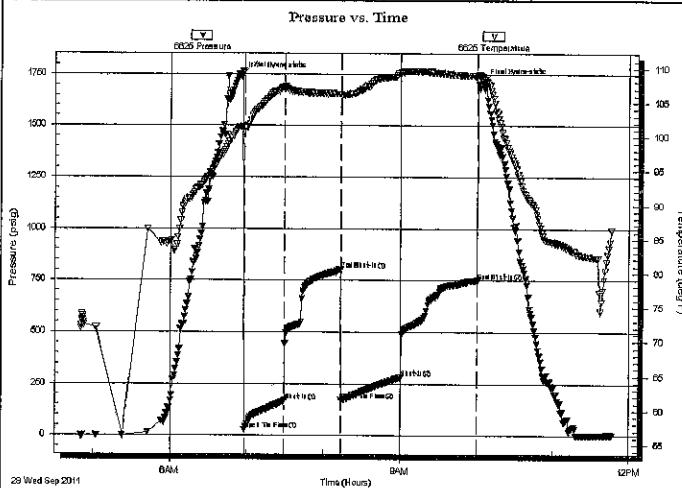
End Time:

11:46:34

Time On Btm: 2011.09.28 @ 06:55:35

Time Off Btm: 2011.09.28 @ 10:04:34

TEST COMMENT: 30-IFP- w k to strg in 15min
45-ISIP-no bl bk
45-FFP-w k to a gd bl 1/4"to 7"bl
60-FSIP-no bl bk



PRESSURE SUMMARY

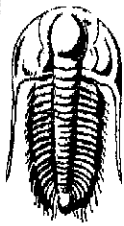
Time (Min.)	Pressure (psig)	Temp (deg F)	Annotation
0	1738.75	101.44	Initial Hydro-static
3	28.46	101.21	Open To Flow (1)
34	167.82	107.14	Shut-In(1)
78	801.29	106.24	End Shut-In(1)
78	171.47	106.06	Open To Flow (2)
125	280.96	109.34	Shut-In(2)
185	749.03	108.93	End Shut-In(2)
189	1712.48	108.74	Final Hydro-static

Recovery

Length (ft)	Description	Volume (bbl)
435.00	Water	5.01
110.00	MW 30%M70%W w/show of oil	1.54

Gas Rates

	Choke (inches)	Pressure (psig)	Gas Rate (Mcf/d)



**TRILOBITE
TESTING, INC**

DRILL STEM TEST REPORT

FLUID SUMMARY

American Energies Corporation

29-9s-20w Rooks KS

155N.Market
Ste 710
Wichita Ks 67202-1821
ATTN: Alan DeGood

Graham A#3
Job Ticket: 44565 **DST#: 1**
Test Start: 2011.09.28 @ 04:50:40

Mud and Cushion Information

Mud Type: Gel Chem	Cushion Type:	Oil API:	deg API
Mud Weight: 9.00 lb/gal	Cushion Length: ft	Water Salinity:	105000 ppm
Viscosity: 54.00 sec/qt	Cushion Volume: bbl		
Water Loss: 6.80 in ³	Gas Cushion Type:		
Resistivity: ohm.m	Gas Cushion Pressure: psig		
Salinity: 2800.00 ppm			
Filter Cake: 1.00 inches			

Recovery Information

Recovery Table

Length ft	Description	Volume bbl
435.00	Water	5.009
110.00	MW 30%M70%W w/show of oil	1.543

Total Length: 545.00 ft Total Volume: 6.552 bbl
 Num Fluid Samples: 0 Num Gas Bombs: 0 Serial #:
 Laboratory Name: Laboratory Location:
 Recovery Comments: RW .06 @ 84F

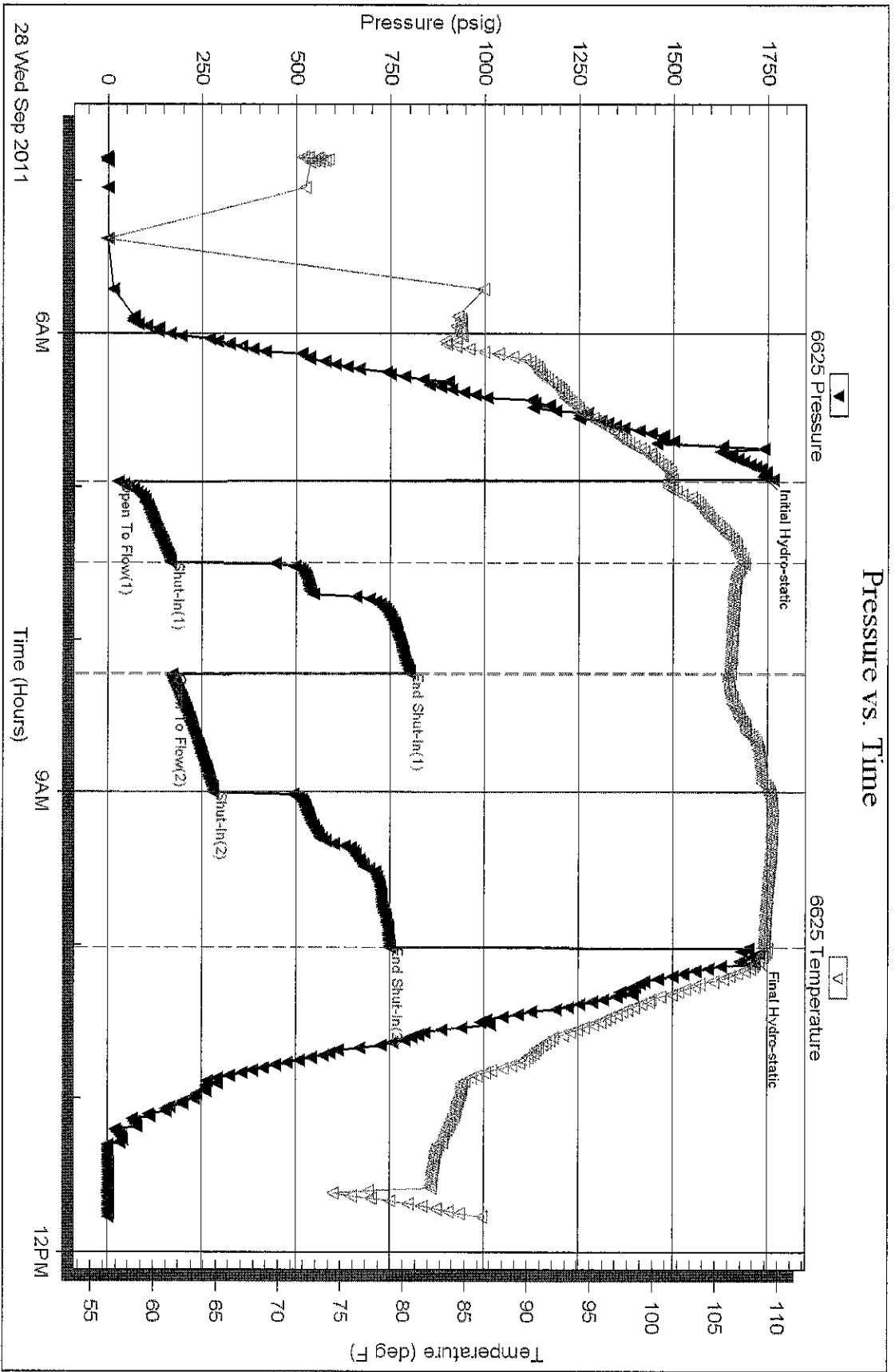
Serial #: 6625

Inside

American Energies Corporation

Graham A#3

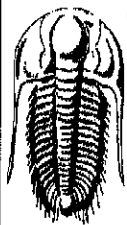
DST Test Number: 1



Tribble Testing, Inc

Ref. No: 44565

Printed: 2011.09.28 @ 12:12:31



TRILOBITE TESTING, INC.

DRILL STEM TEST REPORT

American Energies Corporation

29-9s-20w Rooks

155N.Market
Ste 710
Wichita Ks 67202-1821
ATTN: Alan DeGood

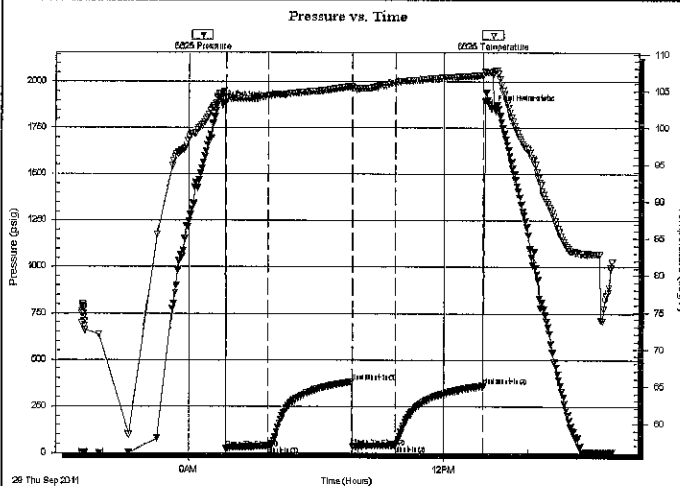
Graham A#3
Job Ticket: 44566 **DST#: 2**
Test Start: 2011.09.29 @ 07:45:39

GENERAL INFORMATION:

Formation: **Arbuckle**
 Deviated: No Whipstock: 0.00 ft (KB)
 Time Tool Opened: 09:26:34
 Time Test Ended: 13:59:03
 Interval: **3823.00 ft (KB) To 3868.00 ft (KB) (TVD)**
 Total Depth: 3868.00 ft (KB) (TVD)
 Hole Diameter: 7.85 inches Hole Condition: Fair
 Test Type: Conventional Bottom Hole (Reset)
 Tester: Ray Schwager
 Unit No: 42
 Reference Elevations: 2278.00 ft (KB)
 2273.00 ft (CF)
 KB to GR/CF: 5.00 ft

Serial #: 6625 Inside
 Press@RunDepth: 41.42 psig @ 3829.00 ft (KB) Capacity: 8000.00 psig
 Start Date: 2011.09.29 End Date: 2011.09.29 Last Calib.: 2011.09.29
 Start Time: 07:45:39 End Time: 13:59:03 Time On Btm: 2011.09.29 @ 09:24:04
 Time Off Btm: 2011.09.29 @ 12:33:33

TEST COMMENT: 30-IFP-w k bl, died in 22min
 60-ISIP-no bl bk
 30-FFP-no bl
 60-FSIP-no bl bk



PRESSURE SUMMARY

Time (Min.)	Pressure (psig)	Temp (deg F)	Annotation
0	1875.88	104.58	Initial Hydro-static
3	25.19	104.13	Open To Flow (1)
32	34.86	104.35	Shut-In(1)
92	381.03	105.56	End Shut-In(1)
92	35.92	105.48	Open To Flow (2)
122	41.42	106.15	Shut-In(2)
184	358.66	107.14	End Shut-In(2)
190	1854.10	107.52	Final Hydro-static

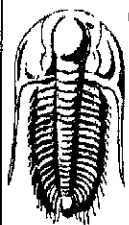
Recovery

Length (ft)	Description	Volume (bbl)
10.00	Mud w/ slight show of oil	0.05

Gas Rates

Choke (inches)	Pressure (psig)	Gas Rate (Mcf/d)

* Recovery from multiple tests



**TRILOBITE
TESTING, INC.**

DRILL STEM TEST REPORT

FLUID SUMMARY

American Energies Corporation

29-9s-20w Rooks

155N.Market
Ste 710
Wichita Ks 67202-1821
ATTN: Alan DeGood

Graham A#3
Job Ticket: 44566 **DST#: 2**
Test Start: 2011.09.29 @ 07:45:39

Mud and Cushion Information

Mud Type: Gel Chem	Cushion Type:	Oil API:	deg API
Mud Weight: 9.00 lb/gal	Cushion Length: ft	Water Salinity:	ppm
Viscosity: 60.00 sec/qt	Cushion Volume: bbl		
Water Loss: 6.79 in ³	Gas Cushion Type:		
Resistivity: ohm.m	Gas Cushion Pressure: psig		
Salinity: 3100.00 ppm			
Filter Cake: 1.00 inches			

Recovery Information

Recovery Table

Length ft	Description	Volume bbl
10.00	Mud w/ slight show of oil	0.049

Total Length: 10.00 ft Total Volume: 0.049 bbl

Num Fluid Samples: 0 Num Gas Bombs: 0 Serial #:

Laboratory Name: Laboratory Location:

Recovery Comments:

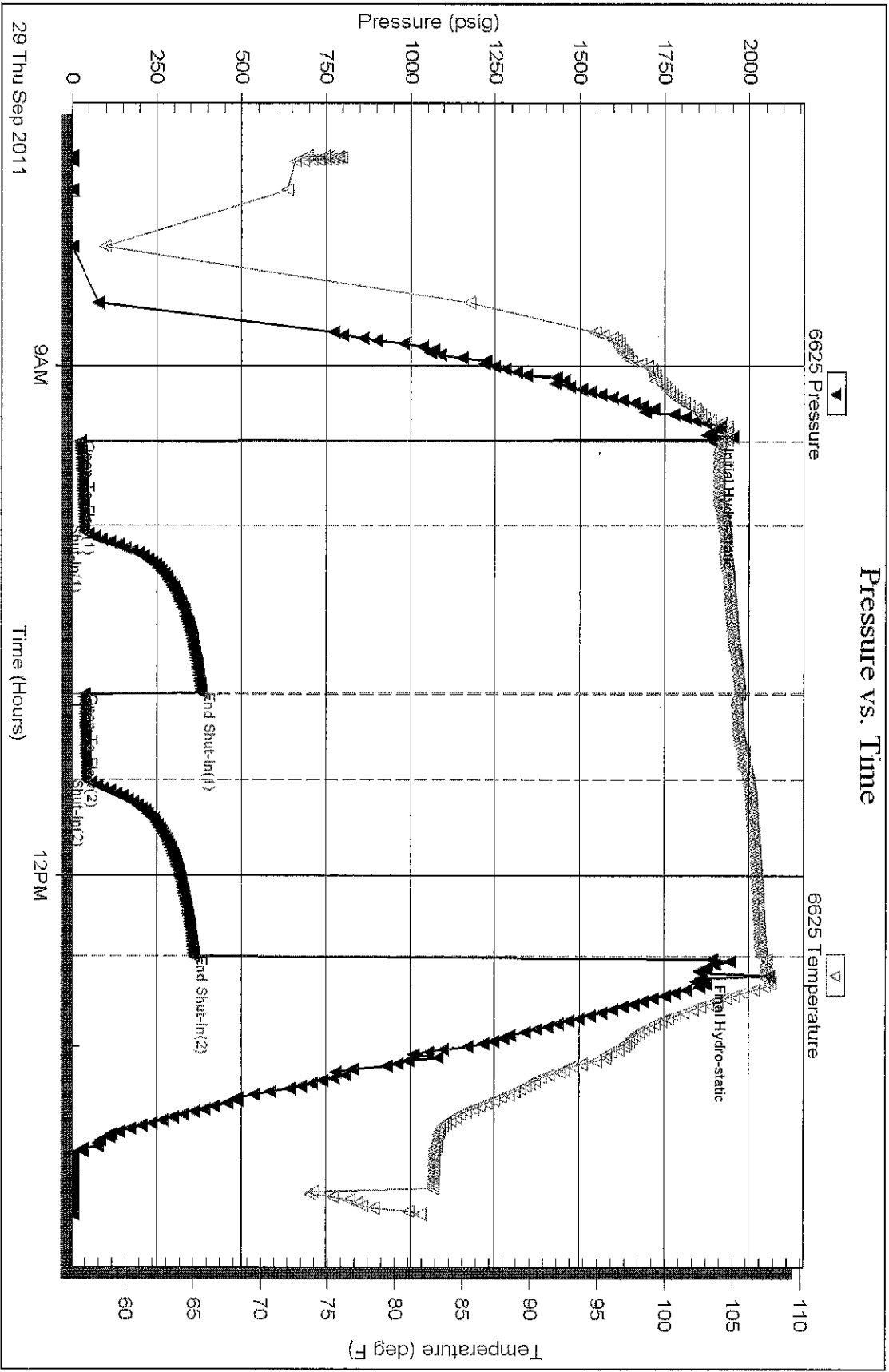
Serial #: 6625

Inside

American Energies Corporation

Gaham A#3

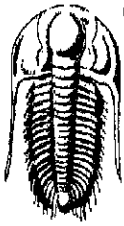
DST Test Number: 2



Trilobite Testing, Inc

Ref. No: 44566

Printed: 2011.09.29 @ 14:30:41



TRILOBITE TESTING, INC.

DRILL STEM TEST REPORT

American Energies Corporation

29-9s-20w Rooks

155N.Market
Ste 710
Wichita Ks 67202-1821
ATTN: Alan DeGood

Graham A#3

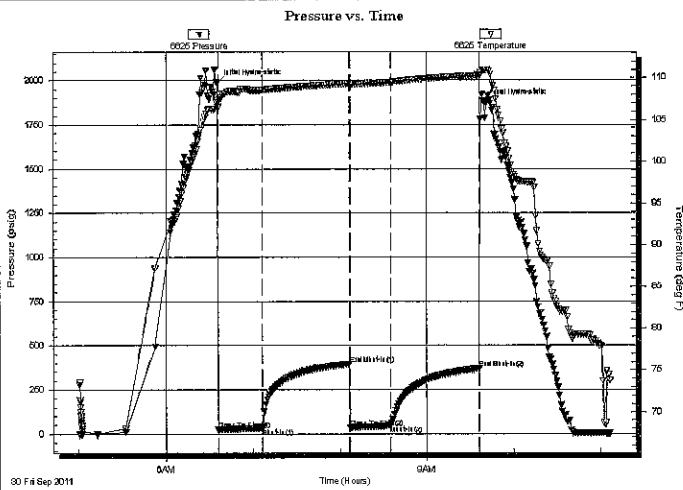
Job Ticket: 44567 **DST#: 3**
Test Start: 2011.09.30 @ 05:00:29

GENERAL INFORMATION:

Formation: **Arbuckle**
 Deviated: No Whipstock: 0.00 ft (KB)
 Time Tool Opened: 06:35:54
 Time Test Ended: 11:06:53
 Interval: **3867.00 ft (KB) To 3875.00 ft (KB) (TVD)**
 Total Depth: 3950.00 ft (KB) (TVD)
 Hole Diameter: 7.85 inches Hole Condition: Fair
 Test Type: Conventional Straddle (Reset)
 Tester: Ray Schwager
 Unit No: 42
 Reference Elevations: 2278.00 ft (KB)
 2273.00 ft (CF)
 KB to GR/CF: 5.00 ft

Serial #: 6625 **Inside**
 Press@RunDepth: 46.97 psig @ 3868.00 ft (KB) Capacity: 8000.00 psig
 Start Date: 2011.09.30 End Date: 2011.09.30 Last Callb.: 2011.09.30
 Start Time: 05:00:29 End Time: 11:06:53 Time On Btm: 2011.09.30 @ 06:35:24
 Time Off Btm: 2011.09.30 @ 09:39:23

TEST COMMENT: 30-IFP-w k bl thru-out surface to 1/4"bl
 60-ISIP-no bl bk
 30-FFP-no bl
 60-FSIP-no bl bk



PRESSURE SUMMARY

Time (Min.)	Pressure (psig)	Temp (deg F)	Annotation
0	1984.79	107.28	Initial Hydro-static
1	22.12	106.48	Open To Flow (1)
31	31.91	108.54	Shut-in(1)
92	395.16	109.34	End Shut-in(1)
92	34.59	109.26	Open To Flow (2)
120	46.97	109.51	Shut-in(2)
181	368.65	110.33	End Shut-in(2)
184	1875.08	110.95	Final Hydro-static

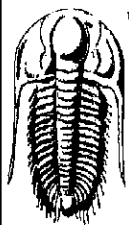
Recovery

Length (ft)	Description	Volume (bbl)
10.00	WM 25%W75%M w/show of oil	0.05

* Recovery from multiple tests

Gas Rates

	Choke (inches)	Pressure (psig)	Gas Rate (Mcf/d)



TRILOBITE TESTING, INC.

DRILL STEM TEST REPORT

American Energies Corporation

29-9s-20w Rooks

155N.Market
Ste 710
Wichita Ks 67202-1821
ATTN: Alan DeGood

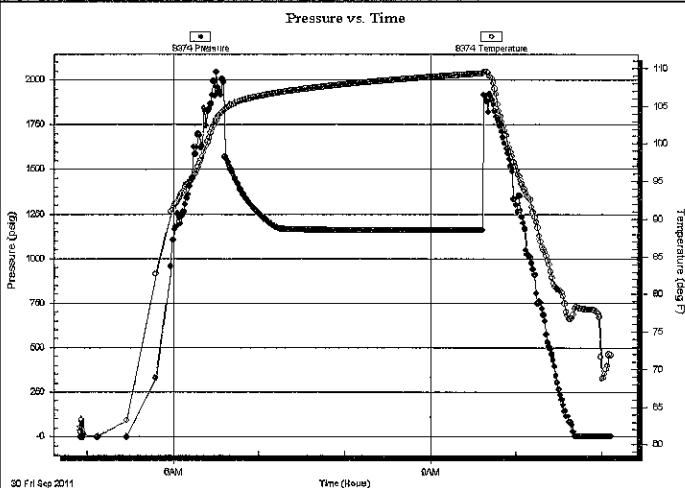
Graham A#3
Job Ticket: 44567 DST#: 3
Test Start: 2011.09.30 @ 05:00:29

GENERAL INFORMATION:

Formation: **Arbuckle**
Deviated: No Whipstock: 0.00 ft (KB)
Time Tool Opened: 06:35:54
Time Test Ended: 11:06:53
Interval: **3867.00 ft (KB) To 3875.00 ft (KB) (TVD)**
Total Depth: 3950.00 ft (KB) (TVD)
Hole Diameter: 7.85 inches Hole Condition: Fair
Test Type: Conventional Straddle (Reset)
Tester: Ray Schwager
Unit No: 42
Reference Elevations: 2278.00 ft (KB)
2273.00 ft (CF)
KB to GR/CF: 5.00 ft

Serial #: 8374 Below (Straddle)
Press@RunDepth: psig @ 3885.00 ft (KB) Capacity: 8000.00 psig
Start Date: 2011.09.30 End Date: 2011.09.30 Last Calib.: 2011.09.30
Start Time: 04:55:31 End Time: 11:06:25 Time On Btm:
Time Off Btm:

TEST COMMENT: 30-IFP-w k bl thru-out surface to 1/4"bl
60-ISIP-no bl bk
30-FFP-no bl
60-FSIP-no bl bk



PRESSURE SUMMARY

Time (Min.)	Pressure (psig)	Temp (deg F)	Annotation

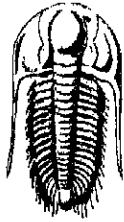
Recovery

Length (ft)	Description	Volume (bbl)
10.00	WM 25%W75%M w/show of oil	0.05

* Recovery from multiple tests

Gas Rates

Choke (inches)	Pressure (psig)	Gas Rate (Mcf/d)



**TRILOBITE
TESTING, INC.**

DRILL STEM TEST REPORT

American Energies Corporation
155N.Market
Ste 710
Wichita Ks 67202-1821
ATTN: Alan DeGood

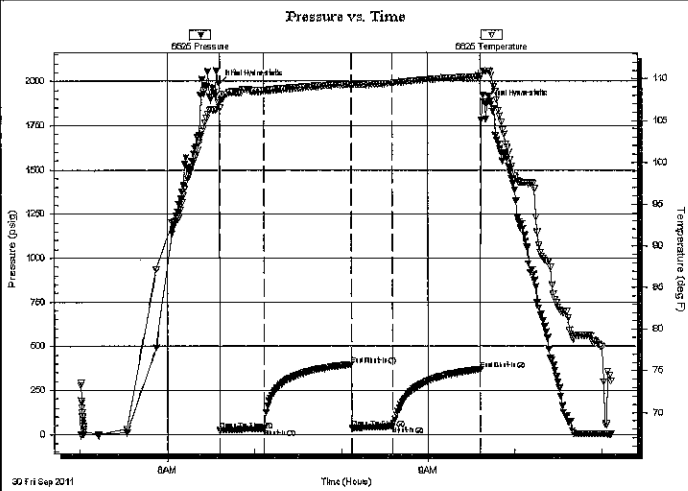
29-9s-20w Rooks
Graham A#3
Job Ticket: 44567 **DST#: 3**
Test Start: 2011.09.30 @ 05:00:29

GENERAL INFORMATION:

Formation: **Arbuckle**
Deviated: No Whipstock: 0.00 ft (KB)
Time Tool Opened: 06:35:54
Time Test Ended: 11:06:53
Test Type: Conventional Straddle (Reset)
Tester: Ray Schwager
Unit No: 42
Interval: **3867.00 ft (KB) To 3875.00 ft (KB) (TVD)**
Reference Elevations: 2278.00 ft (KB)
Total Depth: 3950.00 ft (KB) (TVD) 2273.00 ft (CF)
Hole Diameter: 7.85 inches Hole Condition: Fair KB to GR/CF: 5.00 ft

Serial #: 6625 Inside
Press@RunDepth: 46.97 psig @ 3868.00 ft (KB) Capacity: 8000.00 psig
Start Date: 2011.09.30 End Date: 2011.09.30 Last Callb.: 2011.09.30
Start Time: 05:00:29 End Time: 11:06:53 Time On Btm: 2011.09.30 @ 06:35:24
Time Off Btm: 2011.09.30 @ 09:39:23

TEST COMMENT: 30-IFP-w bl thru-out surface to 1/4"bl
60-ISIP-no bl bk
30-FFP-no bl
60-FSIP-no bl bk



PRESSURE SUMMARY

Time (Min.)	Pressure (psig)	Temp (deg F)	Annotation
0	1984.79	107.28	Initial Hydro-static
1	22.12	106.48	Open To Flow (1)
31	31.91	108.54	Shut-In(1)
92	395.16	109.34	End Shut-In(1)
92	34.59	109.26	Open To Flow (2)
120	46.97	109.51	Shut-In(2)
181	368.65	110.33	End Shut-In(2)
184	1875.08	110.95	Final Hydro-static

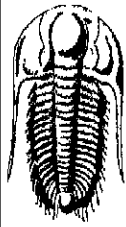
Recovery

Length (ft)	Description	Volume (bbl)
10.00	WM25%W75%M w/show of oil	0.05

* Recovery from multiple tests

Gas Rates

	Choke (inches)	Pressure (psig)	Gas Rate (Mcf/d)



TRILOBITE TESTING, INC.

DRILL STEM TEST REPORT

American Energies Corporation

29-9s-20w Rooks

155N.Market
Ste 710
Wichita Ks 67202-1821
ATTN: Alan DeGood

Graham A#3

Job Ticket: 44567

DST#: 3

Test Start: 2011.09.30 @ 05:00:29

GENERAL INFORMATION:

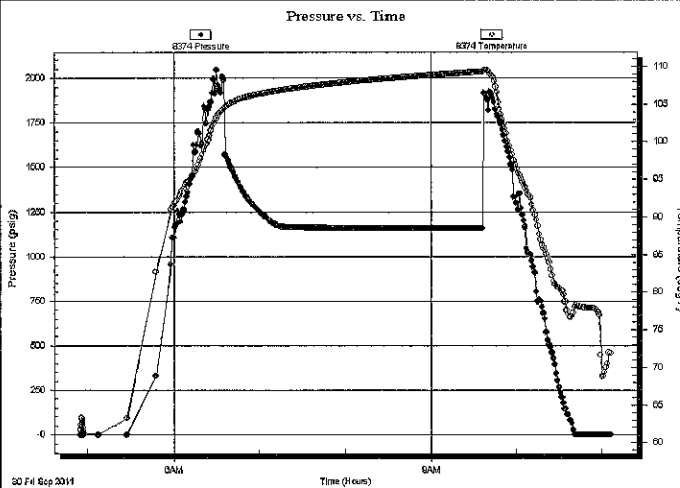
Formation: **Arbuckle**
 Deviated: No Whipstock: 0.00 ft (KB)
 Time Tool Opened: 06:35:54
 Time Test Ended: 11:06:53
 Interval: **3867.00 ft (KB) To 3875.00 ft (KB) (TVD)**
 Total Depth: 3950.00 ft (KB) (TVD)
 Hole Diameter: 7.85 inches Hole Condition: Fair
 Test Type: Conventional Straddle (Reset)
 Tester: Ray Schwager
 Unit No: 42
 Reference Elevations: 2278.00 ft (KB)
 2273.00 ft (CF)
 KB to GR/CF: 5.00 ft

Serial #: 8374

Below (Straddle)

Press@RunDepth: psig @ 3885.00 ft (KB)
 Start Date: 2011.09.30 End Date: 2011.09.30 Capacity: 8000.00 psig
 Start Time: 04:55:31 End Time: 11:06:25 Last Calib.: 2011.09.30
 Time On Btm:
 Time Off Btm:

TEST COMMENT: 30-IFP-w k bl thru-out surface to 1/4"bl
 60-ISIP-no bl bk
 30-FFP-no bl
 60-FSIP-no bl bk



PRESSURE SUMMARY

Time (Min.)	Pressure (psig)	Temp (deg F)	Annotation

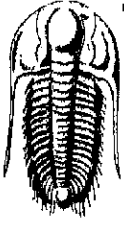
Recovery

Length (ft)	Description	Volume (bbl)
10.00	WM 25%W75%M w/show of oil	0.05

* Recovery from multiple tests

Gas Rates

	Choke (Inches)	Pressure (psig)	Gas Rate (Mcf/d)



**TRILOBITE
TESTING, INC.**

DRILL STEM TEST REPORT

FLUID SUMMARY

American Energies Corporation
155N.Market
Ste 710
Wichita Ks 67202-1821
ATTN: Alan DeGood

29-9s-20w Rooks
Graham A#3
Job Ticket: 44567 **DST#: 3**
Test Start: 2011.09.30 @ 05:00:29

Mud and Cushion Information

Mud Type: Gel Chem	Cushion Type:	Oil APt:	deg API
Mud Weight: 9.00 lb/gal	Cushion Length: ft	Water Salinity:	ppm
Viscosity: 59.00 sec/qt	Cushion Volume: bbl		
Water Loss: 6.77 in ³	Gas Cushion Type:		
Resistivity: ohm.m	Gas Cushion Pressure: psig		
Salinity: 3100.00 ppm			
Filter Cake: 1.00 inches			

Recovery Information

Recovery Table

Length ft	Description	Volume bbl
10.00	WM25%W75%Mw/show of oil	0.049

Total Length: 10.00 ft Total Volume: 0.049 bbl
Num Fluid Samples: 0 Num Gas Bombs: 0 Serial #:
Laboratory Name: Laboratory Location:
Recovery Comments:

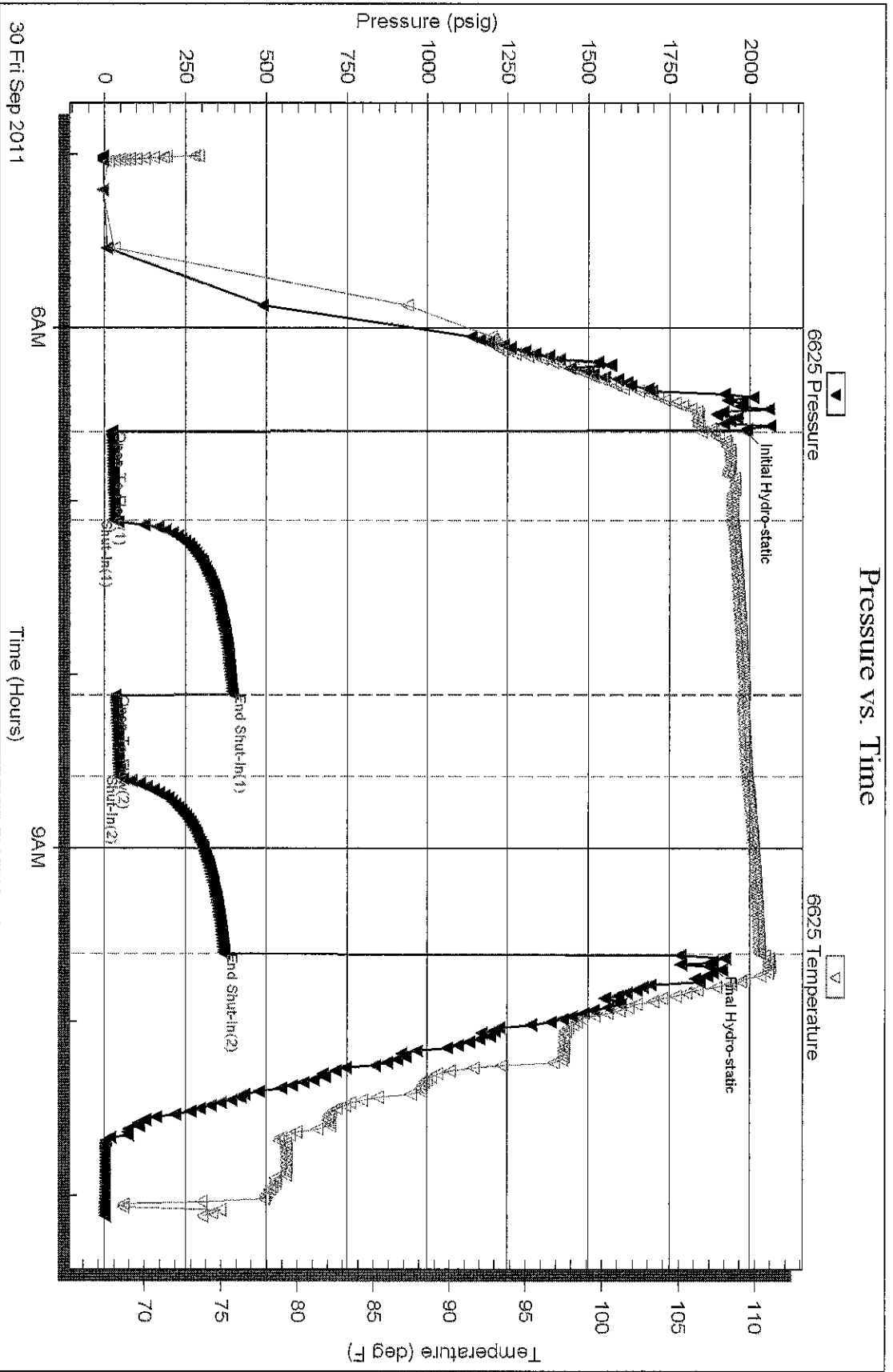
Serial #: 6625

Inside

American Energies Corporation

Graham A#3

DST Test Number: 3

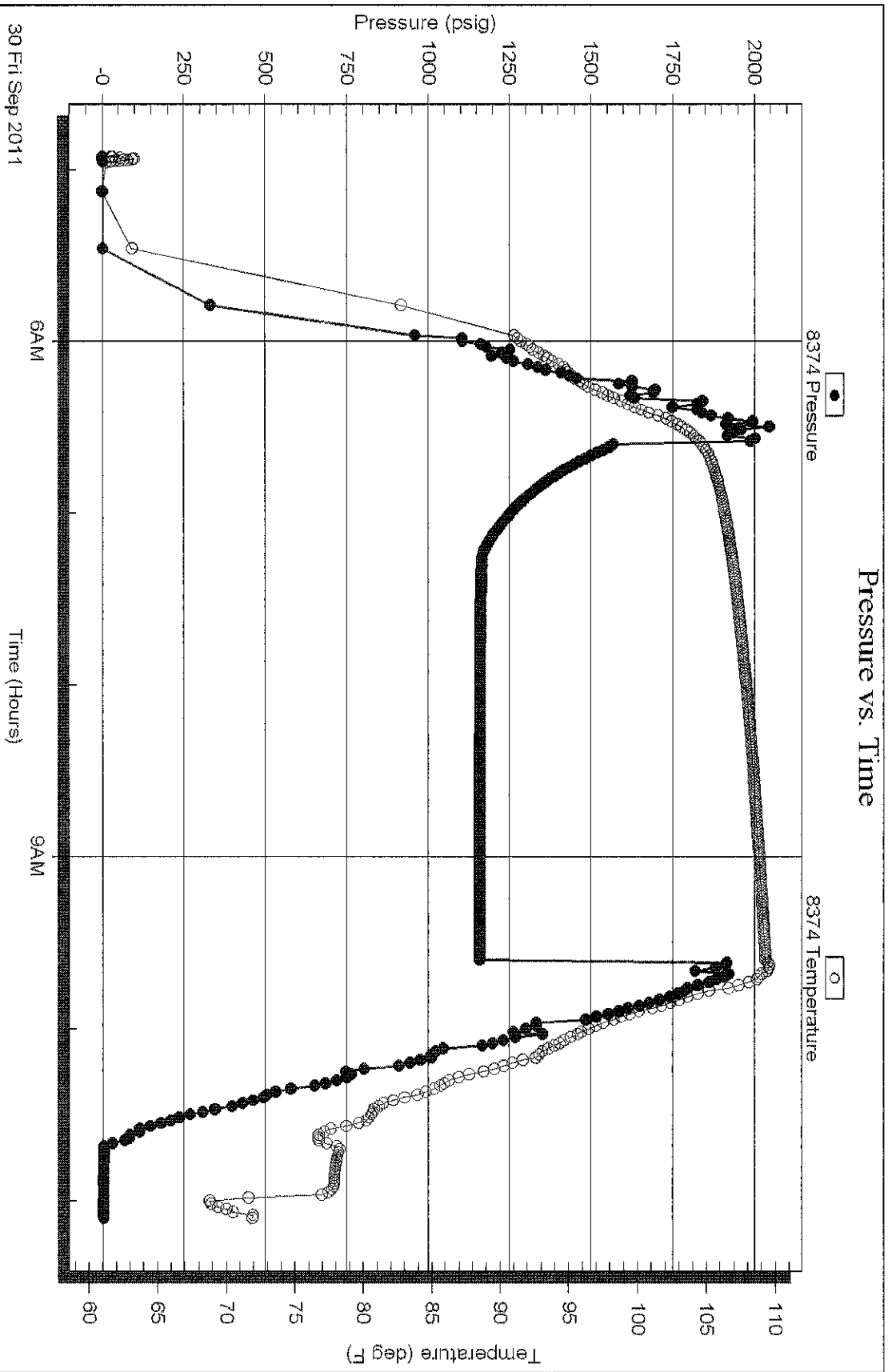


Serial #: 8374

Below (Stratfield) Energies Corporation

GrahamA#3

DST Test Number: 3



Trilobite Testing, Inc

Ref. No: 44567

Printed: 2011.09.30 @ 11:24:16