

GEOLOGICAL REPORT

Noble Petroleum, Inc.

Haskins - Jones #2

SE NE NE Section 19-T28S-R4E

Butler County, Kansas

COMMENCED: 10-04-11

STATUS: Oil

COMPLETED: 10-10-11

A.P.I. #: 15-015-23918

CONTRACTOR: C & G Drilling, Inc.

OPERATOR LIC.: 31389

SIZE OF HOLE: 7 7/8"

FIELD: Augusta

SURFACE PIPE: 8 5/8"

ELEVATION: 1251 K.B.

CEMENTED WITH: N/A

LOGS: Log-Tech DIL, CDL/CNL

LONG STRING: 5 1/2"

MUD SYSTEM: Chemical

CEMENTED WITH: N/A

OTHER:

R.T.D.: 2530'

*William M. Stout
10-10-11*

William M. Stout
Geologist

FORMATION TOPS

1265 G.L. 1271 K.B.

	<u>Sample</u>	<u>Log</u>
Lansing	1718 -447	1718 -447
Kansas City	2036 -765	2036 -765
Base Kansas City	2247 -976	2246 -975
Marmaton	2275 -1004	2275 -1004
Cherokee	2401 -1130	2402 -1131
Arbuckle	2467 -1196	2466 -1195
Total Depth	2530 -1259	2532 -1261

SAMPLE SHOW DESCRIPTIONS

Lansing 1718' (-447)

1805' - 1814'

Limestone - light brown, fine crystalline, fossiliferous, some dense, slightly chalky, faint odor, scattered light stain, show free oil with trace gas bubbles, scattered intercrystalline porosity with fluorescence.

Kansas City 2036' (-765)

2043' - 2051'

Limestone - light brown, brown, gray, fine crystalline, some dense, fossiliferous, good odor, light stain, show free oil, scattered intercrystalline porosity with fluorescence.

2067' - 2080'

Limestone - light brown, light gray, fine crystalline, fossiliferous, chalky, faint odor, light stain, very slight show free oil, scattered fluorescence, intercrystalline porosity.

Arbuckle 2467' (-1196)

2467' - 2480'

Dolomite - brown, light brown, fine crystalline, some dense, fair to good odor, scattered light stain, show free oil, good fluorescence, scattered intercrystalline porosity, with few vugs. (Covered by DST #1)

DST #1 2458' - 2480'

Open tool 30 min. with weak surface blow - died off. Close tool 45 min. Open tool 30 min. with very weak surface blow - died. Flushed tool with no help.

Close tool 45 min. Recovered 5' oil cut mud (80% oil, 20% mud).

IFP 38 - 41 #

FFP 43 - 47#

ISIP 844#

FSIP 869#

HP 1251 - 1235#

Temp. 103 degrees

2481' - 2488'

Dolomite - gray, light brown, brown, fine to medium crystalline, dense, some chert, white opaque, fair odor, light stain, show free oil, scattered intercrystalline porosity with few vugs. (Covered by DST #2)

DST #2 2472' - 2488'

Open tool 30 min. with fair blow building to 35 1/2 inches. Close tool 45 min.
Open tool 60 min. with strong blow building to bottom of bucket 1 min. close
tool 60 min. Recovered 540' total fluid. 360 ' mud cut oil (5% oil, 95% mud),
180' mud cut oil (10% oil, 90 % mud).

IFP 69 - 92#

FFP 705 - 419#

ISIP 990#

FSIP 990#

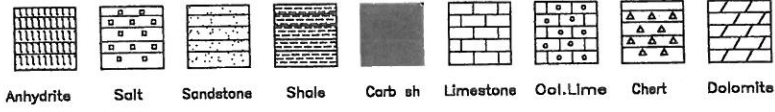
HP 1258 - 1217#

Temp. 101 degrees.

CONCLUSIONS

The decision was made to set 5 1/2" casing to further evaluate the Arbuckle through perforations.

LEGEND



DRILLING TIME IN MINUTES PER FOOT Rate of Penetration Decreases 	DEPTH	LITHOLOGY	SAMPLE DESCRIPTIONS	OIL SHOWS	REMARKS
	1400				G.L. 1265 K.B. 1271 OREAD 1433(-162)
	50				HEEBNER 1477(-206)
	1500				DUNGLAS 1510(-239)
	50				
	1600				
	50		SS-24.8, F.G. MICA, CALG. HA 3/4" N.S. NUB W/ SH. GY GRN.		
			SA 1/35" AA.		
			SA 1/4" DEG GRN. 3/4" SA		

50

SH-35-AA.

SH-64 DK GY GRN. 3/50Y

SH-64 DK GY GRN.

1700

SH-64 DK GY

LS-BRN DK BRN. F-X DVS. FOS
NS. NUB 2/50Y

BROWN LIME
1705 (-434)

50

LS-LI GY LI. BRN. F-X FOS. 3/100
SH-64 DK GY. NS. NUB

LANSING
1718 (-447)

LS-AA w/ SEAT COB. XTAL. NUB
PUS. LT. STU. TO BRN. FOS. NS.
F-X B

LS-BRN GY LI. BRN F-X FOS. NS.
NS. NUB

SH-64 DK GY

SH-AA MEXIC.

SH-DK GY GY

1800

LS-LI. BRN. BRN. F-X DVS. FOS.
NS. NUB

LS-LI BRN LI. GY. F-X FOS. 3/100
SH-64 DK GY. NS. NUB. SCAT. LT.
STU. SPON. GY. BRN. FOS. NS.
2/100

LS-LI BRN F-X FOS DVS. NS.
NUB

LS-BRN GY LI. BRN F-X FOS. NS.
PEN. SEAT. LT. XTAL. NUB

LS-AA w/ SH-64

50

LS-LI. BRN. BRN. F-X FOS. NS.
NS. NUB

LS-AA

LS-BRN. LI. BRN. F-X FOS. NS.
NS. SCAT. IX. 2/50Y BRN.

1900

LS-DK BRN F-X DVS. FEN. FOS.
NS. NUB

SH-DK GY GY. DK. CALC.

8:00 AM 10-7-11
BONNER SPRINGS
1898 (-627)

SH-AA. 1/10Y CALC. HD.

50

SH-BK DK GY. LI.

LS-BRN LI. BRN. F-X DVS. FOS.
NS. NUB

50

51-BLK DCL, WY.

15-BEN Lf. BEN. F-X DNS FOR.
NS. NUP

51-G, M-CY

51-AA

2000

51-G, M-CY FIRM

51-AA

50

15-11-BEN BEN GY F-X SPONS.
FOS. COL OOR. 1/2 STN SFC
5/41 FAS W/FLUR.

15-11-GY 1/2 BEN F-MX GYBY
FOS. COL OOR. 1/2 STN SFC
F-X W/REGULAR FASCH
FLUR.

15-11-BEN Lf. GY F-X FOS. 1/100L
DNS. NS. NUP

15-11-BEN Lf. GY F-X FASCH
FOS. COL OOR. F. LESTIN US SFC
1/2 X BR FLUR.

51-AA

15-11-GY F-Y DNS FOS. NS. NUP

2100

15-11-BEN F-X FOS. GYBY
NS. W/1/2 X

15-AA

15-BEN Lf. BEN. F-Y. FOS. DNS.
NS. NUP W/SIT BY GRN.

50

15-11-BEN GY F-Y. FOS. DNS
NS. PS

51-BLK CARB.

15-11-BEN BINTA F-Y FOS
5/1 REC DNS. NS. NUP

15-AA

51-BLK CARB.

2200

15-11-BEN 1/2 20 F. 1. FOS. DNS
NS. NUP W/SIT GY

15-GY F-Y DNS. ARG. NS.
NUP W/SIT GY

15-AA. 1/2 SA-AD.

15-BEN Lf. BEN. F-X DNS. NS.
FOS. NUP W/SIT DCL GY

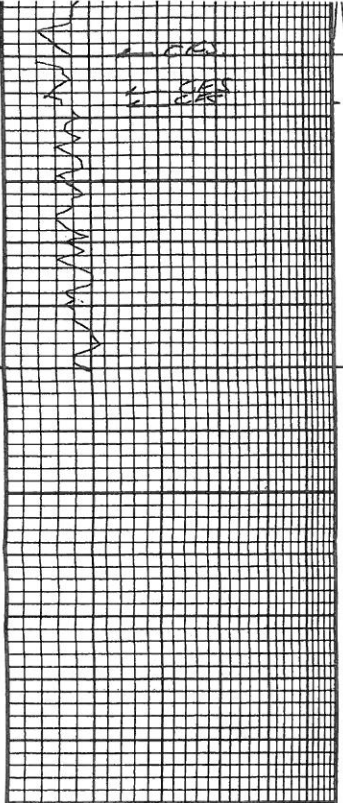
15-AA.

50

51-DIC GY W/15-BEN. F-Y FOS
DNS. NS. NUP

KANSAS CITY
2036(-765)

BASE KANSAS CITY
2247(-976)



2500	1	DOE-LE 1320-114 F.A. DWS. 12502 FO. ODR. 21.5 M. SEC. SEAT FLUOR. CR. LA. 11089
	2	DOE-LE 1320-114 F.A. DWS. 12502 FO. ODR. 21.5 M. SEC. SEAT FLUOR. CR. LA. 11089
	3	DOE-LE 1320-114 F.A. DWS. 12502 FO. ODR. 21.5 M. SEC. SEAT FLUOR. CR. LA. 11089
	4	DOE-LE 1320-114 F.A. DWS. 12502 FO. ODR. 21.5 M. SEC. SEAT FLUOR. CR. LA. 11089
	5	DOE-LE 1320-114 F.A. DWS. 12502 FO. ODR. 21.5 M. SEC. SEAT FLUOR. CR. LA. 11089
	6	DOE-LE 1320-114 F.A. DWS. 12502 FO. ODR. 21.5 M. SEC. SEAT FLUOR. CR. LA. 11089
	7	DOE-LE 1320-114 F.A. DWS. 12502 FO. ODR. 21.5 M. SEC. SEAT FLUOR. CR. LA. 11089
	8	DOE-LE 1320-114 F.A. DWS. 12502 FO. ODR. 21.5 M. SEC. SEAT FLUOR. CR. LA. 11089
	9	DOE-LE 1320-114 F.A. DWS. 12502 FO. ODR. 21.5 M. SEC. SEAT FLUOR. CR. LA. 11089
	10	DOE-LE 1320-114 F.A. DWS. 12502 FO. ODR. 21.5 M. SEC. SEAT FLUOR. CR. LA. 11089
50	11	DOE-LE 1320-114 F.A. DWS. 12502 FO. ODR. 21.5 M. SEC. SEAT FLUOR. CR. LA. 11089
	12	DOE-LE 1320-114 F.A. DWS. 12502 FO. ODR. 21.5 M. SEC. SEAT FLUOR. CR. LA. 11089
	13	DOE-LE 1320-114 F.A. DWS. 12502 FO. ODR. 21.5 M. SEC. SEAT FLUOR. CR. LA. 11089
	14	DOE-LE 1320-114 F.A. DWS. 12502 FO. ODR. 21.5 M. SEC. SEAT FLUOR. CR. LA. 11089
	15	DOE-LE 1320-114 F.A. DWS. 12502 FO. ODR. 21.5 M. SEC. SEAT FLUOR. CR. LA. 11089
	16	DOE-LE 1320-114 F.A. DWS. 12502 FO. ODR. 21.5 M. SEC. SEAT FLUOR. CR. LA. 11089
	17	DOE-LE 1320-114 F.A. DWS. 12502 FO. ODR. 21.5 M. SEC. SEAT FLUOR. CR. LA. 11089
	18	DOE-LE 1320-114 F.A. DWS. 12502 FO. ODR. 21.5 M. SEC. SEAT FLUOR. CR. LA. 11089
	19	DOE-LE 1320-114 F.A. DWS. 12502 FO. ODR. 21.5 M. SEC. SEAT FLUOR. CR. LA. 11089
	20	DOE-LE 1320-114 F.A. DWS. 12502 FO. ODR. 21.5 M. SEC. SEAT FLUOR. CR. LA. 11089

2101(-1196)

BACK DRILL AFTER
DST #1 6:10 AM
10-9-11

BACK DRILL AFTER
DST #2 3:30 PM
10-9-11

RTD
2530(-1259)

DEPTH	LITHOLOGY	SAMPLE DESCRIPTIONS	OIL SHOWS	REMARKS
-------	-----------	---------------------	-----------	---------

CONTRACTOR _____ LOCATION _____

LEASE _____ IP _____ SEC _____ TWP _____ RNG _____

ELEVATION _____ RTD _____ COUNTY _____ STATE _____