

T34S, R7W, 6th P.M.

SGOMI

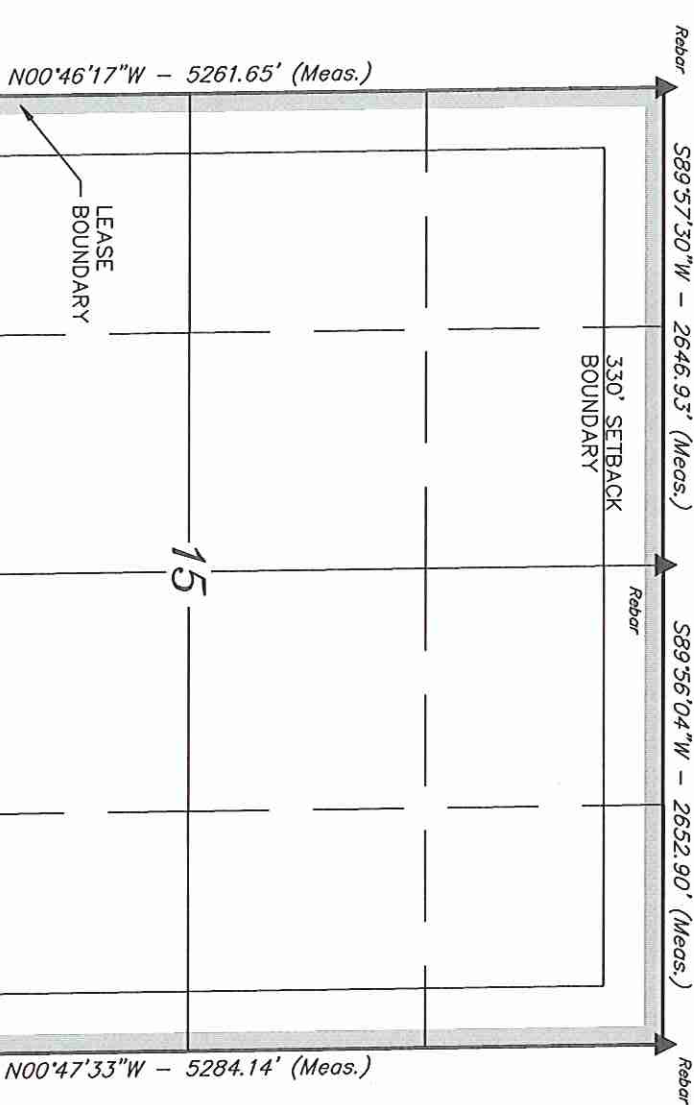
Well location, ALBRIGHT CROFT FARM 3407 #15-1, located as shown in the SW 1/4 SW 1/4 of Section 15, T34S, R7W, 6th P.M., Harper County, Kansas.

BASIS OF ELEVATION

SPOT ELEVATION LOCATED AT THE NORTHEAST CORNER OF SECTION 22, T33S, R7W, 6th P.M. TAKEN FROM THE ANTHONY, QUADRANGLE, KANSAS, HARPER COUNTY, 7.5 MINUTE QUAD (TOPOGRAPHIC MAP) PUBLISHED BY THE UNITED STATES DEPARTMENT OF THE INTERIOR, GEOLOGICAL SURVEY. SAID ELEVATION IS MARKED AS BEING 1348 FEET.

BASIS OF BEARINGS

BASIS OF BEARINGS IS A G.P.S. OBSERVATION.

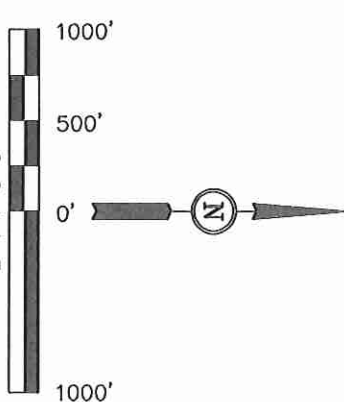


Rebar 460'
 Rebar 330'
 Rebar 589°57'30"W - 2646.93' (Meas.)
 Rebar 589°56'04"W - 2652.90' (Meas.)
 Rebar 5302.12' (Meas.)
 Spike

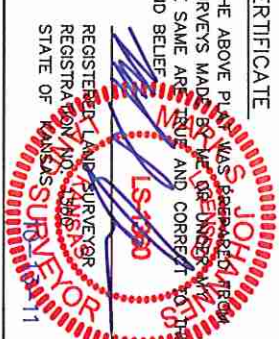
LEGEND:

- └ = 90° SYMBOL
- = PROPOSED WELL HEAD.
- ▲ = SECTION CORNERS LOCATED.

(NAD 83)
 LATITUDE = 37°04'50.25" (37.080626)
 LONGITUDE = 98°04'23.70" (98.073250)
 (NAD 27)
 LATITUDE = 37°04'50.17" (37.080602)
 LONGITUDE = 98°04'22.47" (98.072909)



THIS IS TO CERTIFY THAT THE ABOVE PLAT WAS PREPARED FROM FIELD NOTES OF ACTUAL SURVEYS MADE BY THE UNDERSIGNED UNDER SUPERVISION AND THAT THE SAME ARE TRUE AND CORRECT TO THE BEST OF MY KNOWLEDGE AND BELIEF.



UNTAH ENGINEERING & LAND SURVEYING
 85 SOUTH 200 EAST - VERNAL, UTAH 84076
 (435) 789-1017

SCALE	1" = 1000'	DATE SURVEYED:	10-05-11	DATE DRAWN:	10-11-11
PARTY	L.S. K.H. C.C.	REFERENCES	G.L.O. PLAT		
WEATHER	COOL	FILE	SGOMI		