



GAMMA RAY
NEUTRON
CEMENT BOND
COMPLETION LOG

Company POSTROCK ENERGY CORP.
Well COOPER S DWIGHT #11-1
Field CHEROKEE BASIN CBM
County LABETTE
State KANSAS

Location: 779' RSL & 1399' DVA
AP# #: 15-098-24643-00-00
Operator: OPEN HOLE
Date: 6-24-2011

Company POSTROCK ENERGY CORP.
Well COOPER S DWIGHT #11-1
Field CHEROKEE BASIN CBM
County LABETTE
State KANSAS

Production Logging
Estimated Cement Top
Amount & Type Cement
Drilling Contractor
Equipment Number
Recorded By

Top Log Interval
Bottom Logged Interval
Fluid Level

Type Fluid
Production Logging
Estimated Cement Top
Amount & Type Cement
Drilling Contractor
Equipment Number
Recorded By

Company POSTROCK ENERGY CORP.
Well COOPER S DWIGHT #11-1
Field CHEROKEE BASIN CBM
County LABETTE
State KANSAS

Production Logging
Estimated Cement Top
Amount & Type Cement
Drilling Contractor
Equipment Number
Recorded By

Company POSTROCK ENERGY CORP.
Well COOPER S DWIGHT #11-1
Field CHEROKEE BASIN CBM
County LABETTE
State KANSAS

All interpretations are opinions based on inferences from electrical or other measurements and we cannot and do not guarantee the accuracy or correctness of any interpretation, and we shall not, except in the case of gross or willful negligence on our part, be liable or responsible for any loss, costs, damages or expenses incurred or sustained by anyone resulting from any interpretation made by any of our officers, agents or employees. These interpretations are also subject to our general terms and conditions set out in our current Price Schedule.

Comments

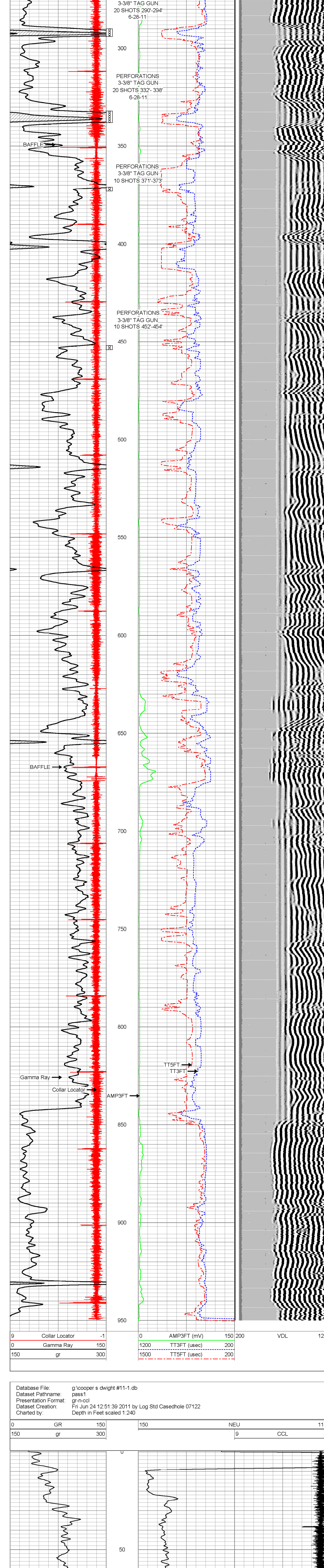
SET HORTON RETRIEVABLE BRIDGE PLUG AT 326' ON JUNE 28, 2011

THANK YOU

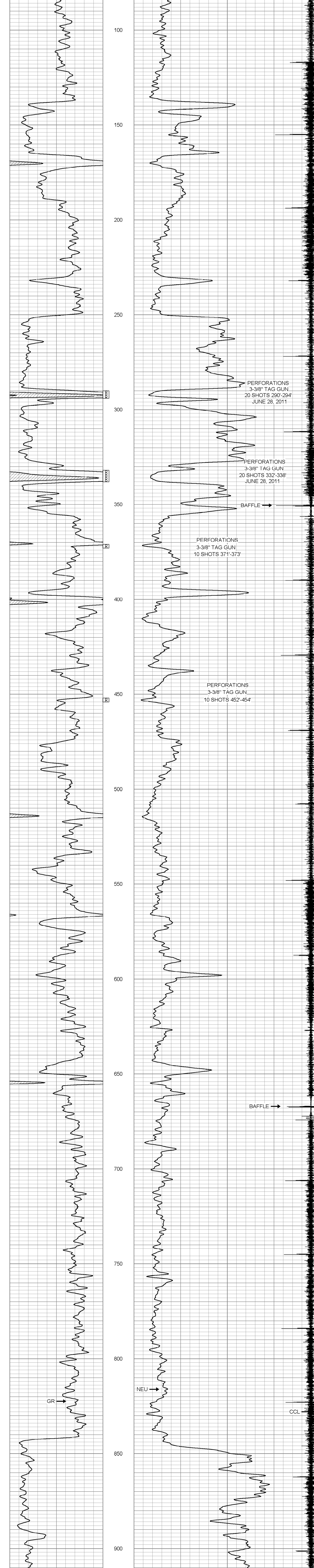
Sensor	Offset (ft)	Schematic	Description	Len (ft)	OD (in)	Wt (lb)
WVF3FT	6.58		tekco tekco cent	2.17	1.69	5.00
WVF5FT	5.58		CBL TEKCO-TEKCO2RCVR (TEKCO169) 1 11/16" TEKCO 2 RCVR DELWARE	9.75	1.69	50.00
WVFCAL	2.17		tekco tekco cent	2.17	1.69	5.00
WVFSYNC	2.17					

Dataset: cooper s dwight #11-1-db: field/well/run1/pass2MERGE
Total Length: 14.08 ft
Total Weight: 60.00 lb
O.D.: 1.69 in

Database File: g:\cooper s dwight #11-1.db
Presentation Pathname: pass2MERGE
Presentation Format: scbl_dr
Dataset Creation: Mon Jun 27 14:00:27 2011
Charted by: Depth in Feet scaled 1.240



Database File: g:\cooper s dwight #11-1.db
Presentation Pathname: pass1
Presentation Format: gr-n-ccl
Dataset Creation: Fri Jun 24 12:51:39 2011 by Log Std Casdeshole 07122
Charted by: Depth in Feet scaled 1.240



Company POSTROCK ENERGY CORP.
Well COOPER S DWIGHT #11-1
Field CHEROKEE BASIN CBM
County LABETTE
State KANSAS
Date 6-24-2011

