

Sean Deenihan Petroleum Geologists

15-109-21023

GEOLOGIST'S REPORT DRILLING TIME AND SAMPLE LOG

COMPANY	Shakespeare Oil Co., Inc.	ELEVATIONS	KB 2033'
LEASE	Scheetz #2-16	DF	
FIELD	Wildcat	GL 2023'	
LOCATION	335' FSL & 1300' TEL	Measurements Are All From Kelly Bushing	
SEC	16 TWSP 13S RGE 32W	CASING	CONDUCTOR SURFACE 8-5/8" @ 214'
COUNTY	Logan STATE Kansas	TYPE MUD	Chemical
CONTRACTOR	Val Rig #7	SPUD	9/5/2011 COMP 9/26/2011
RTD	4732'	LTD	4730'
MUD UP	3400'	CONDUCTOR SURFACE	8-5/8" @ 214'
SAMPLES SAVED FROM	3800' TO RTD	PRODUCTION	
DRILLING TIME KEPT FROM	3800' TO RTD	ELECTRICAL SURVEYS	CND, DIL, MICRO, Sonic, Mediflorid
SAMPLES EXAMINED FROM	3800' TO RTD	GEOLOGICAL SUPERVISION FROM	3800'

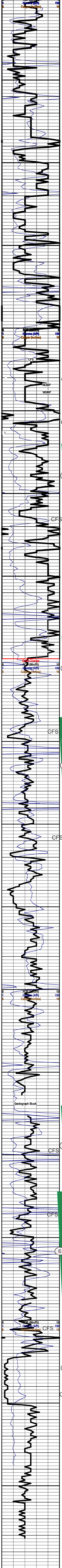
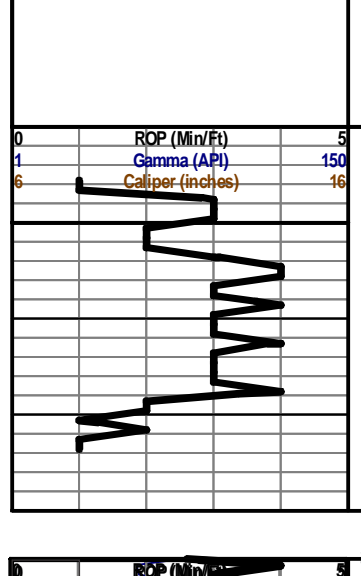
REFERENCE WELL: Shakespeare - Scheetz #1-16

Formation	Sample Tops	E-log Tops	Strat Pos.
B/Anhydrite	2522 (+511)	2524 (+509)	
Heebner Sh.	3971 (-938)	3976 (-943)	
Lansing	4013 (-980)	4019 (-986)	
Stark Sh.	4265 (-1212)	4254 (-1221)	
BKC	4316 (-1283)	4316 (-1283)	
Pawnee	4452 (-1419)	4448 (-1415)	
Cherokee Sh.	4536 (-1503)	4532 (-1499)	
Morrow Sh.	4612 (-1579)	4614 (-1581)	
Miss	4652 (-1619)	4648 (-1615)	



REMARKS: The Scheetz #2-16 was evaluated thoroughly, and the decision was made to plug and abandon.

15-109-21023 Respectfully Submitted, Sean Deenihan



Geological Descriptions

Anhydrite 2498 (+535)

B/ Anhydrite 2522 (+511)

Ls., wh, vf gr, p vis Por, chiky, n/s

Ls. crm, vf-f gr, p - fr intgran Por, fri, no show

Sh., blk

Ls., wh, gy, ool IP, fr oom Por, sli chiky, fr intgran Por, no odor

Ls., wh, gy, ool IP, fr oom Por, sli chiky, fr intgran Por, no odor

Ls., wh, vf gr, chiky, occ cherty, rr blk stn, n/s

Ls., crm, vf gr, p intgran Por, n/s

Ls., brn, fus, vf gr, hd, no show

Ls., wh, gy, vf gr, p vis Por, n/s

Sh., blk

Sh., gy-dk gy, grn

Ls., wh, vf gr, mottled, chiky IP, fr intgran Por, PSFO, lt brn, slow bleed, ft odor upon crush

Sh., gy - dk gy

Ls., wh, crm, vf gr, chiky, fr intgran por, PSFO - lt brn, mod dk brn O stn, no odor

Sh., gy - blk, carb

Sh., gy, firm

Ls., wh, crm, vf gr, chiky, fr intgran por, sli show live oil upon crush, no odor,

Sh., gy, soft

Lansing 4013 (-980)

Ls., crm, vf gr, Ool IP, p intgran Por, occ vug, PSFO-ft odor, n/s

Ls., wh, gy, vf gr, fos (fus & crin), chiky IP, iso vug Por, FSFO, slow bleed, ft odor

Ls., wh, crm, Ool, p-fr int Ool Por, fr vug Por, FSFO- lt brn, ft odor

Ls., wh-crm, cherty IP, p vis Por, firm, n/s

Ls., crm, p fos cast Por, p vug Por, PSFO - med brn, ft odor upon crush, wk fluor

Ls., crm, xf-vf gr, occ sd inc, p intgran Por, iso fr vug por, sli show free Oil, sme w/ rr crs qtz grn, firm, no odor

Sh., gy, brn

Ls., wh, chiky, occ fos frags, PSFO, iso vugs, firm

Ls., wh, crm, vf gr, chiky, sme cherty, sli show of live oil, rr stn, no odor, no fluor

Sh., gy, grn soft

Ls., wh, chiky, vf gr, p intgran Por, no show

Ls., crm, Ool, p-fr Oom Por, barren, no show

Ls., crm, chiky, vf-f gr, fri, no odr. Ls., gy, re xtl, p vis Por, hd, cherty IP, n/s

Ls., wh, crm, vf gr, p vis Por, firm, barren, no odor

Muncie Creek 4162(-1129)

Sh., blk

Sh., gy

Ls., crm, gy, sdy, sme p intgran Por, dense firm, n/s

Sh., gy-blk

Ls., crm, tn, vf gr, chiky, mod sdy - ctr/frstd, f gr, sb rd, p srtid, p intgran Por, rr slow spotty oil bleed - md brn, no fluor, no odor

Ls., brn, tn, vf gr, hd, scaly, rextl Ool, NVP, n/s

Sh., and shaly Ls, varic

Ls., crm, abd fos frags, md gr, p intfos Por, well cemented, sli show free oil, firm, no odor, wk fluor

Sh., blk

Stark Sh. 4245 (-1212)

Sh., gy, firm

Ls., gy, xf gr, scaly firm, NVP, rr brn stn, NSFO, no odor, min fluor, inc. Cht, rr brn sd - well p intgran Por, well cemented, no show

Ls., crm, vf gr, p intgran Por, rr vug, v sli show of Oil upon crush, mod brn stn, spotty

Sh., blk

Hushpuckney Sh. 4280 (-1247)

Ls., wh, tn, xf-vf gr, p vis por, rr vug por, sli show of live oil upon crush, 5% w/ gd fluor

Ls., crm, gy, vf gr, p vis Por, hd, fos, n/s

Sh., gy, orange

Ls., tn, gy, xf gr, dnse, scaly, hd

Sh., varic, silty

Ls., crm, gy, vf gr, chiky, hd, n/s

Sh., dk gy, brn

Ls., crm, gy, fos, vf gr, NVP, hd

Ls., crm, lt gy, xf gr, dense, hd

Sh., varic, firm

Ls, wh, gy, f gr, p vug Por, fri, no odor

Ls, gy, f gr, fr intxn Por, fri, barren, no show

Cht., gy, wh, fos IP, sharp, n/s

Pawnee 4452 (-1419)

Ls., crm, tn, vf gr, p intgran Por, sli stn, NSFO, no odor

Ls., gy, xf gr, abd cht, p vis Por, hd, n/s

Myric Station 4481 (-1448)

Ls., crm, tn, chiky, p vis por, rr O stn, NSFO, firm-hd

Ls., crm, tn, xf xin, cherty, hd

Ft. Scott 4504 (-1471)

Ls., crm, Ool, p- occ fr int ool Por, rr vug Por, SSFO upon crush, mod stn, sli odor, spotty fluor

Ls., tn, brn, vf gr, fos, p vis Por, rr vug, SSFO- tarry, no odor, no fluor

Ls., crm, vf gr, p Por, hd,

Cherokee Sh. 4536 (-1503)

Sh., blk

Ls., gy, chiky, vf gr, Chiky, p intgran Por, iso vug Por, SSFO, ft odor

Sh., blk, gy,

Sh., gy

Johnson Zone 4578 (-1545)

Ls., tn, brn, xf-vf gr, p overall por, iso vug por w/ p show brn, tarry O, wk fluor, ft odor

Ls., tn, brn, vf gr, p intgran Por, iso vug Por w/ Fr show free Oil, dull flour, mod Odor

Morrow Sh., 4612 (-1579)

Sh., grn, gy, silty

Ss., vf gr, well sorted p-fr intgran Por, fri, FSFO, dull fluor, wk odor

Ss., wh, frosty, sbrd, vf gr, fr-gd intgran Por, clean, fri, mod brn stn, FSFO upon crush, mod odor, dull fluor

Cht., tn, p-fr vug Por, mod brn live oil, occ edge stn,

Sh., varic, silty sdy

Sh., gy, dk gy

Mississippi 4652 (-1619)

Ls., crm, tn, vf xin, sdy, dense, n/s

Ls., gy, tn, Ool IP, re-xtl, p Por,

Ls., tn, crm, xf gr, firm, sli chiky IP

Ls., vf gr, sdy, sbrd, shaly, fri, n/s

Ls., xf gr, wh, translent, rr iso p.p. vug, sme cherty

Ls., crm, p vug por, sli show Oil, no odor

Ls., crm, chiky, pyr,

MUD-CO
Mud Check @ 4007' 9.0 Wt 67Vis 2# LCM 3K Chl

Strap @ 4057' = 1.02 LTB Survey= .75 deg

DST # 1
4015-4057' 10-30-30-60"

IF: BOB 1.5 Min no BB

FF: BOB 2 Min no BB

REC: 279' WM (25%W, 75%M)

1426' MW (10%M, 90%W)

IFP: 138-351#

FFP: 382-821#

SIP: 1192-1184#

HP:2038-1922#

BHT: 121 F

Chl: 50K

DST # 2
4070-4115' 30-30-45-60"

IF: WB to 2" no BB

FF: WB to 1.5" no BB

REC: 57' W

IFP: 31-40#

FFP: 43-52#

SIP: 1128-1106#

HP:2017-1937#

BHT = 113F

MUD-CO
Mud Check @ 4118' 9.1 Wt 64 Vis 4# LCM 4.8K Chl

DST # 3
4186-4244 30-30-30-30

IF: WB 0.5" No BB

FF: No blow No BB

REC: 15' M

IFP: 46-52#

FFP: 49-51#

SIP: 1124-1064#

HP:2120-2047#

BHT 118 F

MUD-CO
Mud Check @ 4245' 9.3 Wt 75+ Vis 4# LCM 6K Chl

DST # 4
4237-4308' 30-30-30-30"

IF: WB 1/4" No BB

FF: No blow No BB

REC: 8' M w/ O spts

IFP: 47-52#

FFP: 44-61#

SIP: 215-99#

HP:2163-2110#

BHT 113 F

DST # 5
4470-4536' 30-30-30-60"

IF: 2" No BB

FF: No Blow No BB

REC: 30' M w/ O spts

IFP: 43-44#

FFP: 44-61#

SIP: 2182-86#

HP:2197-2165#

BHT 113 F

MUD-CO
Mud Check @ 4604' 9.2 Wt 52 Vis 3# LCM 5.8K Chl

DST # 7
4600-4645 30-30-60-90

IF: 6.5" No BB

FF: 8" No BB

REC: 149' OCM (1%O, 99%M)

62' OGCM (2%G, 1%O, 97%M)

IFP: 23-58#

FFP: 54-83#

SIP: 941-900#

HP:2325-2231#

MUD-CO
Mud Check @ 4645' 9.3 Wt 55 Vis 3# LCM 5.8K Chl