



**TRILOBITE
TESTING, INC.**

DRILL STEM TEST REPORT

Shakespeare Oil Co INC

202 W Main st
Salem IL 62881 + 1519

ATTN: Don Williams

Scheetz 2-16

16-13s-32w-Logan

Job Ticket: 44636

DST#: 4

Test Start: 2011.09.21 @ 12:58:27

GENERAL INFORMATION:

Formation: **LKC-K-L**

Deviated: No Whipstock: ft (KB)

Time Tool Opened: 14:46:27

Time Test Ended: 20:29:57

Test Type: Conventional Bottom Hole (Reset)

Tester: Jeff Brown

Unit No: 44

Interval: 4237.00 ft (KB) To 4308.00 ft (KB) (TVD)

Total Depth: 4308.00 ft (KB) (TVD)

Hole Diameter: 7.88 inches Hole Condition: Fair

Reference Elevations: 3033.00 ft (KB)

3023.00 ft (CF)

KB to GR/CF: 10.00 ft

Serial #: 8321

Inside

Press @ Run Depth: 51.89 psig @ 4276.00 ft (KB)

Start Date: 2011.09.21

End Date:

2011.09.21

Start Time: 12:58:28

End Time:

20:29:57

Capacity: 8000.00 psig

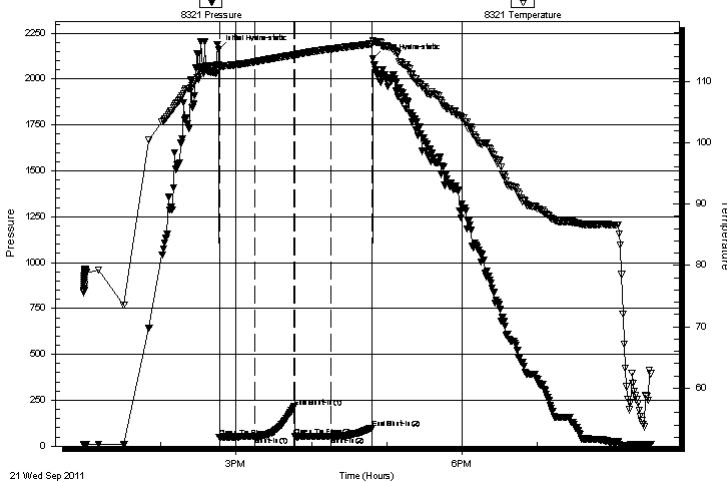
Last Calib.: 2011.09.21

Time On Btm: 2011.09.21 @ 14:45:57

Time Off Btm: 2011.09.21 @ 16:48:57

TEST COMMENT: IFP-Weak blow built to 1/8 in
ISI-Dead no blow back
FFP-Dead no blow
FSI-Dead no blow back

Pressure vs. Time



PRESSURE SUMMARY

Time (Min.)	Pressure (psig)	Temp (deg F)	Annotation
0	2163.00	112.70	Initial Hydro-static
1	46.54	112.21	Open To Flow (1)
29	52.36	113.19	Shut-In(1)
60	214.09	114.30	End Shut-In(1)
61	51.07	114.31	Open To Flow (2)
89	51.89	115.27	Shut-In(2)
122	99.05	116.10	End Shut-In(2)
123	2110.49	116.68	Final Hydro-static

Recovery

Length (ft)	Description	Volume (bbl)
8.00	Mud with Oil spots	0.11

* Recovery from multiple tests

Gas Rates

	Choke (inches)	Pressure (psig)	Gas Rate (Mcf/d)



**TRILOBITE
TESTING, INC.**

DRILL STEM TEST REPORT

FLUID SUMMARY

Shakespeare Oil Co INC

Scheetz 2-16

202 W Main st
Salem IL 62881 + 1519

16-13s-32w-Logan

Job Ticket: 44636

DST#: 4

ATTN: Don Williams

Test Start: 2011.09.21 @ 12:58:27

Mud and Cushion Information

Mud Type: Gel Chem

Cushion Type:

Oil API:

deg API

Mud Weight: 9.00 lb/gal

Cushion Length:

ft

Water Salinity:

ppm

Viscosity: 75.00 sec/qt

Cushion Volume:

bbbl

Water Loss: 7.20 in³

Gas Cushion Type:

Resistivity: ohm.m

Gas Cushion Pressure:

psig

Salinity: 6000.00 ppm

Filter Cake: inches

Recovery Information

Recovery Table

Length ft	Description	Volume bbl
8.00	Mud with Oil spots	0.112

Total Length: 8.00 ft Total Volume: 0.112 bbl

Num Fluid Samples: 0

Num Gas Bombs: 0

Serial #:

Laboratory Name:

Laboratory Location:

Recovery Comments:

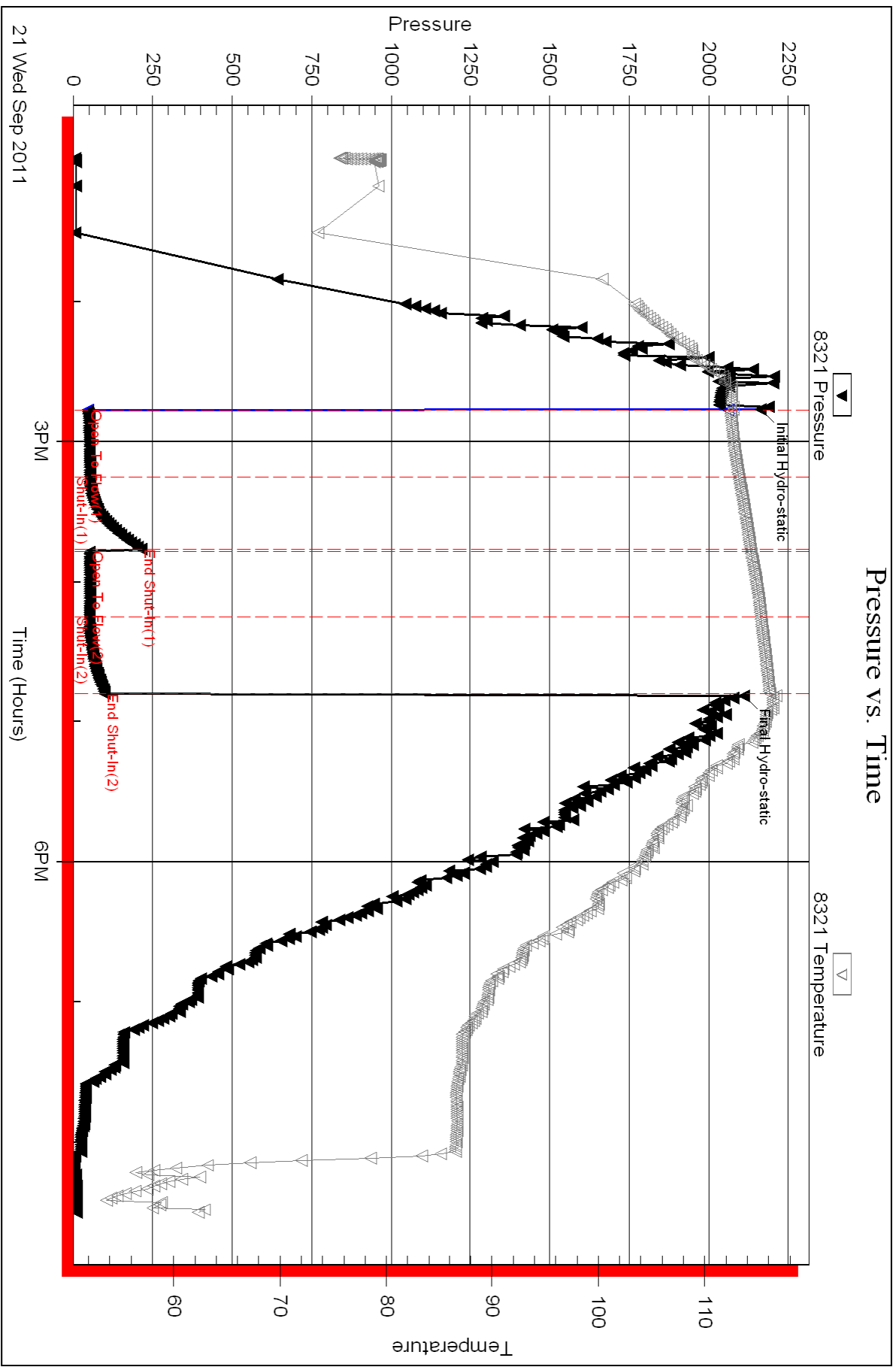
Serial #: 8321

Inside

Shakespeare Oil Co INC

16-13s-32w - Logan

DST Test Number: 4



Triobite Testing, Inc

Ref. No: 44636

Printed: 2011.09.22 @ 08:43:13