



TRILOBITE TESTING, INC.

DRILL STEM TEST REPORT

Berexco LLC
 2020 N Bramblewood
 Wichita Ks, 67206
 ATTN: Ed Grieves

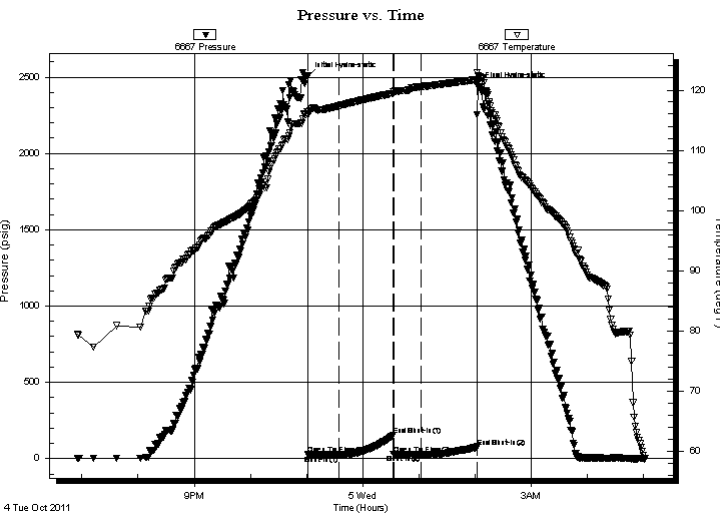
6/27s/33w Haskell, Ks
Earl 'B' #1-6
 Job Ticket: 44398 **DST#: 2**
 Test Start: 2011.10.04 @ 18:55:40

GENERAL INFORMATION:

Formation: **Morrow**
 Deviated: No Whipstock: ft (KB)
 Time Tool Opened: 23:01:10
 Time Test Ended: 05:15:55
 Interval: **5091.00 ft (KB) To 5110.00 ft (KB) (TVD)**
 Total Depth: 5110.00 ft (KB) (TVD)
 Hole Diameter: 7.78 inches Hole Condition: Fair
 Test Type: Conventional Bottom Hole (Reset)
 Tester: Shane McBride
 Unit No: 55
 Reference Elevations: 2958.00 ft (KB)
 2946.00 ft (CF)
 KB to GR/CF: 12.00 ft

Serial #: 6667 Inside
 Press @ RunDepth: 26.09 psig @ 5092.00 ft (KB) Capacity: 8000.00 psig
 Start Date: 2011.10.04 End Date: 2011.10.05 Last Calib.: 2011.10.05
 Start Time: 18:55:40 End Time: 05:01:55 Time On Btm: 2011.10.04 @ 23:00:55
 Time Off Btm: 2011.10.05 @ 02:02:55

TEST COMMENT: 1/8" in blow died in 25 min
 No return
 No blow
 No return



PRESSURE SUMMARY

Time (Min.)	Pressure (psig)	Temp (deg F)	Annotation
0	2506.76	116.42	Initial Hydro-static
1	25.77	115.84	Open To Flow (1)
34	24.19	117.36	Shut-In(1)
92	151.00	119.46	End Shut-In(1)
92	26.83	119.65	Open To Flow (2)
122	26.09	120.55	Shut-In(2)
181	76.73	121.74	End Shut-In(2)
182	2440.07	122.43	Final Hydro-static

Recovery

Length (ft)	Description	Volume (bbl)
3.00	mud 100% m	0.01

* Recovery from multiple tests

Gas Rates

Choke (inches)	Pressure (psig)	Gas Rate (Mcf/d)



**TRILOBITE
TESTING, INC.**

DRILL STEM TEST REPORT

FLUID SUMMARY

Berexco LLC

6/27s/33w Haskell, Ks

2020 N Bramblewood
Wichita Ks, 67206

Earl 'B' #1-6

Job Ticket: 44398

DST#: 2

ATTN: Ed Grieves

Test Start: 2011.10.04 @ 18:55:40

Mud and Cushion Information

Mud Type: Gel Chem

Cushion Type:

Oil API:

0 deg API

Mud Weight: 9.00 lb/gal

Cushion Length:

ft

Water Salinity:

0 ppm

Viscosity: 54.00 sec/qt

Cushion Volume:

bbbl

Water Loss: 7.60 in³

Gas Cushion Type:

Resistivity: 0.00 ohm.m

Gas Cushion Pressure:

psig

Salinity: 4000.00 ppm

Filter Cake: 1.00 inches

Recovery Information

Recovery Table

Length ft	Description	Volume bbl
3.00	mud 100%m	0.015

Total Length: 3.00 ft Total Volume: 0.015 bbl

Num Fluid Samples: 0

Num Gas Bombs: 0

Serial #:

Laboratory Name:

Laboratory Location:

Recovery Comments:

Serial #: 6667

Inside

Berexco LLC

Earl B/#1-6

DST Test Number: 2

Pressure vs. Time

