

GEOLOGIST'S REPORT

DRILLING TIME AND SAMPLE LOG

BACH OIL PRODUCTION
WELL: DELMONT #1

LOC.: 1320' FNL & 570' FEL
 SEC. 8-2-19W
 PHILLIPS COUNTY, KANSAS
 API: 15-147-20654-00-00

DRILLING CONTR.: MURFIN RIG #16
 SPUD: 09-27-11 COMP: 10-4-11
 MUD UP: 2800' TYPE MUD: CHEM.
 DRILL TIME: 3100 to RTD
 RTD: 3870' LTD: 3867'
 SAMPLES SAVED: 3150'-RTD
 GEOLOGIST: ROBERT J. PETERSEN

ELEVATION
 KB: 2259
 GL: 2254
 LOG MEASURED
 FROM: KB

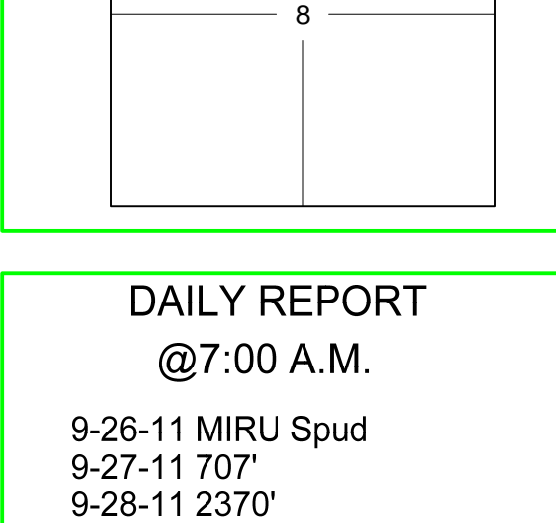
SURFACE CASING
 8 5/8"
 Casing set @ 227'
 w/160 SX

PRODUCTION CASING
 5 1/2" Casing set

WELL LOG SURVEYS
 CDL/DIL/SONIC/MICRO

ELECTRIC LOG TOPS

FORMATION	Depth	Datum	Pos.
Stone Corral	1852	+407	+25
Base Stone Corral	1880	+379	+23
Topeka	3223	-964	+25
Heebner	3431	-1172	+21
Toronto	3460	-1201	+24
Lansing	3476	-1217	+25
Base Kansas City	3694	-1435	+27
Arbuckle	3818	-1559	+46



REFERENCE WELL:

Texas Co.
 #1 Marten Bayens
 SW SW NW
 8-2-19W

REMARKS AND RECOMMENDATIONS

Production casing has been run to further test this well.

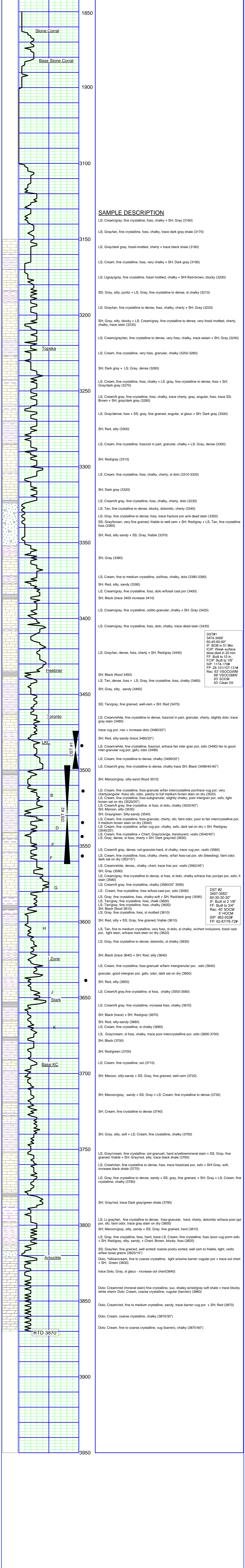
Respectfully submitted,

Robert J. Petersen
 Robert J. Petersen

DAILY REPORT

@7:00 A.M.

9-26-11 MIRU Spud
 9-27-11 707'
 9-28-11 2370'
 9-29-11 3190'
 9-30-11 3499' broke down
 10-1-11 3499' broke down
 10-2-11 3499' broke down
 10-3-11 3520'
 10-4-11 3790'



SAMPLE DESCRIPTION

LS: Cream/gray, fine crystalline, foss, chalky + SH; Gray (3160)

LS: Gray/tan, fine crystalline, foss, chalky, trace dark gray shale (3170)

LS: Gray/dark gray, fossil-mottled, cherty + trace black shale (3180)

LS: Cream, fine crystalline, foss, very chalky + SH; Dark gray (3190)

LS: Ltgray/gray, fine crystalline, fossil mottled, chalky + SH; Red-brown, blocky (3200)

SD: Gray, silty, pyritic + LS; Gray, fine crystalline to dense, sl chalky (3210)

LS: Gray/tan, fine crystalline to dense, foss, chalky, cherty + SH; Gray (3220)

SH: Gray, silty, blocky + LS; Cream/gray, fine crystalline to dense, very fossil mottled, cherty, chalky, trace stain (3230)

LS: Cream/gray/tan, fine crystalline to dense, very foss, chalky, trace estain + SH; Gray (3240)

LS: Cream, fine crystalline, very foss, granular, chalky (3250-3260)

SH: Dark gray + LS; Gray, dense (3260)

LS: Cream, fine crystalline, foss, chalky + LS; gray, fine crystalline to dense, foss + SH; Gray/dark gray (3270)

LS: Cream/lt gray, fine crystalline, foss, chalky, trace cherty, gray, angular, foss, trace SS; Brown + SH; Gray/dark gray (3280)

LS: Gray/dense, foss + SS; gray, fine grained, angular, sl glauc + SH; Dark gray (3300)

SH: Red, silty (3300)

LS: Cream, fine crystalline, foss/ool in part, granular, chalky + LS; Gray, dense (3300)

SH: Red/gray (3310)

LS: Cream, fine crystalline, foss, chalky, cherty, sl dolo (3310-3320)

SH: Dark gray (3320)

LS: Cream/lt gray, fine crystalline, foss, chalky, cherty, dolo (3320)

LS: Tan, fine crystalline to dense, blocky, dolomitic, cherty (3340)

LS: Gray, fine crystalline to dense, foss, trace fracture por w/sl dead stain (3350)

SS: Gray/brown, very fine grained, friable to well-cem + SH; Red/gray + LS; Tan, fine crystalline foss (3360)

SH: Red, silty sandy + SS; Gray, friable (3370)

SH: Gray (3380)

LS: Cream, fine to medium crystalline, ool/foss, chalky, dolo (3380-3390)

SH: Red, silty, sandy (3390)

LS: Cream/gray, fine crystalline, foss, dolo w/fossil cast por (3400)

SH: Black (trace 3400 increase 3410)

LS: Cream/gray, fine crystalline, oolitic-granular, chalky + SH; Gray (3420)

LS: Cream/gray, fine crystalline, foss, dolo, chalky, trace dead stain (3430)

LS: Gray/tan, dense, foss, cherty + SH; Red/gray (3440)

SH: Black (flood 3450)

LS: Tan, dense, foss + LS; Gray, fine crystalline, foss, chalky (3460)

SH: Gray, silty, sandy (3460)

SS: Tan/gray, fine grained, well-cem + SH; Red (3470)

LS: Cream/white, fine crystalline to dense, foss/ool in part, granular, cherty, slightly dolo, trace gray stain (3480)

trace vug por, nso + increase dolo (3480/20')

SH: Red, silty-sandy (trace 3480/20')

LS: Cream/white, fine crystalline, foss/ool, w/fair foss inter gran por, ssfo (3490) fair to good inter-granular vug por, gsfso, odor (3499)

LS: Cream, fine crystalline to dense, chalky (3499/20')

LS: Cream/lt gray, fine crystalline to dense, chalky trace SH; Black (3499/40-60')

SH: Maroon/gray, silty-sand (flood 3510)

LS: Cream, fine crystalline, foss-granular w/fair intercrystalline por/trace vug por, very cherty/angular -foss) sfo, odor, patchy to full medium brown stain on dry (3520)

LS: Cream, fine crystalline, foss, chalky-soft + SH; Red/dark gray (3520)

LS: Cream/lt gray, fine crystalline, si foss, sl dolo, chalky (3520/40')

SH: Maroon, silty (3530)

SH: Gray/green, Silty-sandy (3540)

LS: Cream, fine crystalline, foss-granular, cherty, sfo, faint odor, poor to fair intercrystalline por, lt medium brown stain on dry (3540)

LS: Cream, fine crystalline, w/fair vug por, chalky, ssfo, dark sat on dry + SH; Red/gray (3540/20')

LS: Cream, fine crystalline + Chert; Gray/orange, translucent, vssfo (3540/40')

LS: Gray, dense, sl foss, cherty + SH; Dark gray/red (3550)

LS: Cream/lt gray, dense, ool-granular-hard, sl chalky, trace vug por, vssfo (3560)

LS: Cream, fine crystalline, foss, chalky, cherty, w/fair foss-cat por, sfo (bleeding), faint odor, dark sat on dry (352/15')

LS: Cream/white, dense,, chalky, chert, trace frac por, vssfo (3562/45')

SH: Gray (3580)

LS: Cream/gray, fine crystalline to dense, sl foss, sl dolo, chalky w/trace frac por/ppt por, ssfo, lt stain (3580)

LS: Cream/lt gray, fine crystalline, chalky (3580/20' 3590)

LS: Cream, fine crystalline, foss w/foss-cast por, ssfo (3590)

LS: Gray, fine crystalline, foss, chalky-soft + SH; Red/dark gray (3595)

LS: Tan/gray, fine crystalline, foss, chalk (3600)

LS: Tan/gray, fine crystalline, foss, chalky (3600)

SH: Black (flood 3610)

LS: Gray, fine crystalline, foss, sl mottled (3610)

SH: Red, silty + SS; Gray, fine grained, friable (3610)

LS: Cream, fine to medium crystalline, very foss, sl dolo, sl chalky, w/chert inclusions, fossil cast por, light stain, w/trace med stain on dry (3620)

LS: Gray, fine crystalline to dense, dolomitic, sl chalky (3630)

SH: Black (trace 3640) + SH; Red, silty (3640)

LS: Cream, fine crystalline, foss-granular w/fair intergranular por, ssfo (3640)

granular, good intergran por, gsfso, odor, dark sat on dry (3650)

SH: Red, silty (3650)

LS: Cream/lt gray, fine crystalline, sl foss, chalky (3550-3560)

LS: Cream/lt gray, fine crystalline, increase foss, chalky (3670)

SH: Black (trace) + SH; Red/gray (3670)

SH: Red, silty-sandy (3680)

LS: Cream, fine crystalline, sl chalky (3680)

LS: Gray/cream, sl foss, chalky, trace poor intercrystalline por, ssfo (3690-3700)

SH: Black (3700)

SH: Red/green (3700)

LS: Cream, fine crystalline, ool (3710)

SH: Maroon, silty-sandy + SS; Gray, fine grained, well-cem (3720)

SH: Maroon/gray, sandy + SS; Gray + LS; Cream, fine crystalline to dense (3730)

SH: Cream, fine crystalline to dense (3740)

SH: Gray, silty, soft + LS; Cream, fine crystalline, chalky (3750)

LS: Gray/cream, fine crystalline, ool-granular, hard w/yellowmineral stain + SS; Gray, fine grained, friable + SH; Gray/red, silty, trace black shale (3760)

LS: Cream/tan, fine crystalline to dense, foss, trace fossilcast por, ssfo + SH; Gray, soft, increase black shale (3770)

LS: Gray, fine crystalline to dense, sandy + SS; gray, fine grained, + SH; Gray + LS; Cream, fine crystalline, chalky (3780)

SH: Gray/red, trace Dark gray/green shale (3790)

LS: Lt gray/tan, fine crystalline to dense, foss-granular, hard, cherty, dolomitic w/trace poor ppt por, sfo, faint odor, trace gray stain on dry (3800)

SH: Maroon/gray, silty, sandy + SS; Gray, fine grained, hard (3810)

LS: Gray, fine crystalline, foss, hard, trace LS; Cream, fine crystalline, foss /poor vug por, ssfo + SH; Red/gray, silty, sandy, + Chert; Brown, blocky, foss (3820)

SS: Gray/tan, fine grained, well sorted/ coarse poorly sorted, well cem to friable, tight, vssfo w/few loose grains (3825/15')

Dolo; Yellow/cream, fine to coarse crystalline, tight w/some barren vugular por + trace ool chert + SH; Green (3830)

trace Dolo; Gray, sl glauc - increase ool chert(3840)

Dolo; Cream/red (mineral coarse crystalline, vug, shaley w/red/gray soft shale + trace blocky white chert+ Dolo; Cream, coarse crystalline, sicular, barren) (3860)

Dolo; Cream/red, fine to medium crystalline, sandy, trace barren vug por + SH; Red (3870)

Dolo; Cream, coarse crystalline, chalky (3870/30')

Dolo; Cream, fine to coarse crystalline, vug (barren), chalky (3870-60')

DST#1
 3474-3499'
 60-45-60-60"
 IF: BOB in 51 Min.
 ICP: Weak surface
 blow-died in 20 min.
 FF: Built to 10 in.
 FCP: Built to 1/8"
 SIP: 1174-170#
 FP: 28-101/107-131#
 Rec: 63' VSOCGWM
 68' VSOCGWM
 63' SOCM
 63' Clean Oil

DST #2
 3497-3562'
 60-30-30-30"
 IF: Built to 2 1/8"
 FF: Built to 3/4"
 Rec: 40' SOCM
 5' SOCM
 SIP: 962-932#
 FP: 62-67/76-72#