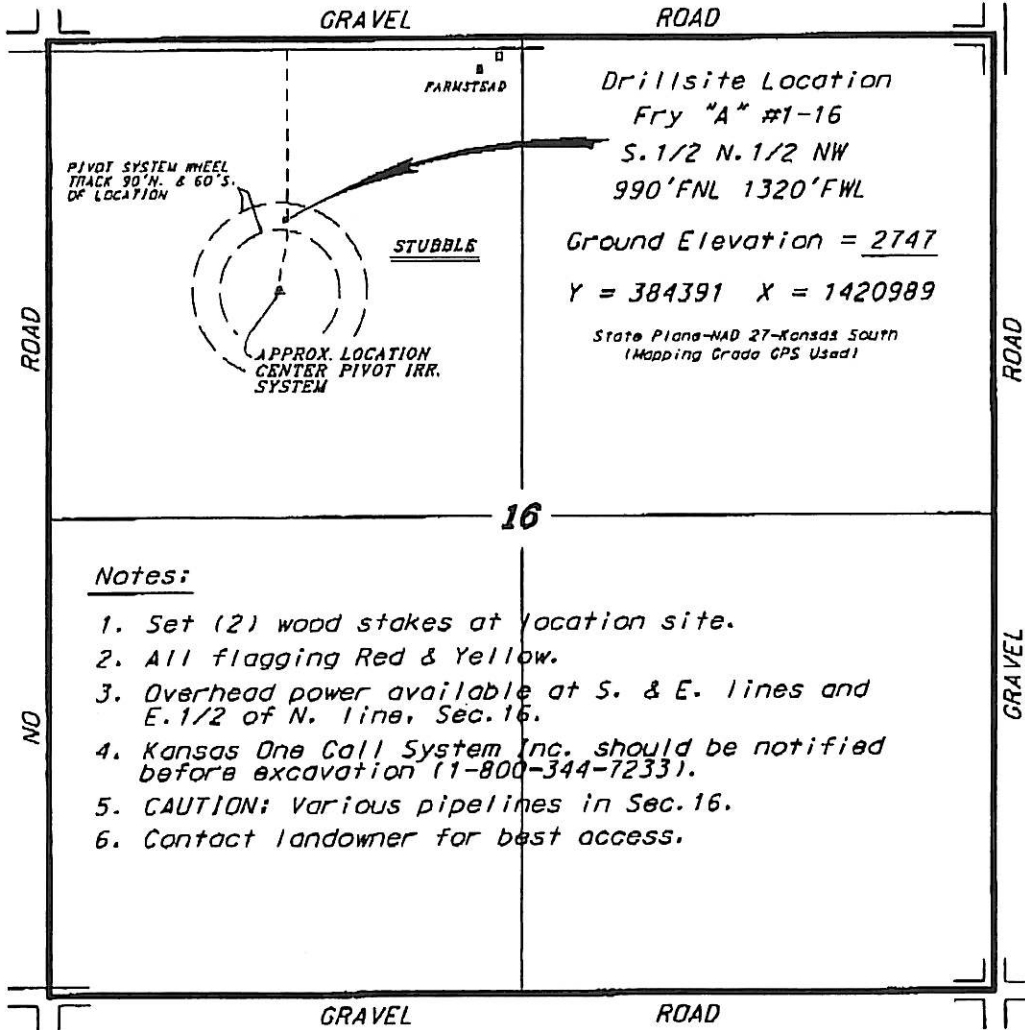


MCCOY PETROLEUM CORPORATION  
FRY LEASE  
NW. 1/4, SECTION 16, T27S, R29W  
GRAY COUNTY, KANSAS

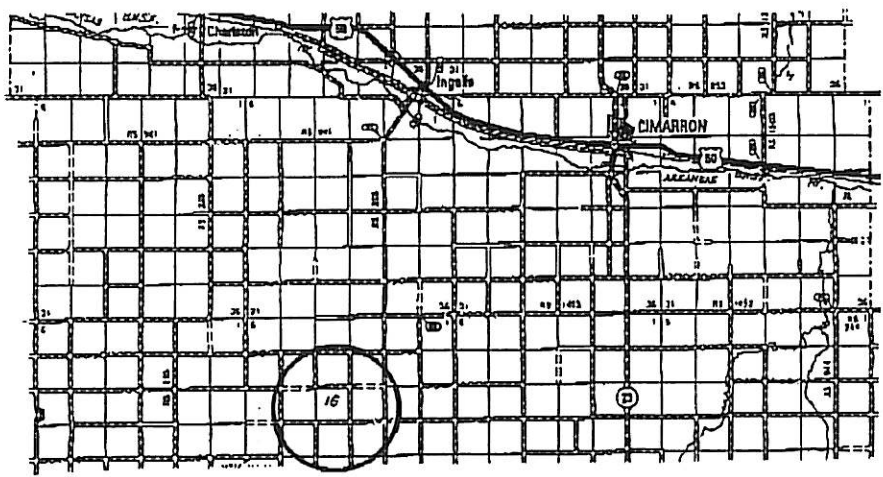


Ingress and egress to location as shown on this plat is per usage only and may not be legally opened for public use. Contact landowner, tenant and county road department for access.



Notes:

1. Set (2) wood stakes at location site.
2. All flagging Red & Yellow.
3. Overhead power available at S. & E. lines and E. 1/2 of N. line, Sec. 16.
4. Kansas One Call System Inc. should be notified before excavation (1-800-344-7233).
5. CAUTION; Various pipelines in Sec. 16.
6. Contact landowner for best access.



Controlling data is based upon the best maps and photographs available to us and upon a regular section of land containing 360 acres.  
 Approximate section lines were determined using the nearest standards of care of oilfield surveys practicing in the State of Kansas. The section corners, when established the precise section lines, were not necessarily located, and the exact location of the drillsite location in the section is not guaranteed. Therefore, the operator securing this service and accepting this aid and all other parties relying thereon agree to hold Central Kansas Drilling Services, Inc., its officers and employees harmless from all losses, costs and expenses and hold entities released from any liability from incidental or consequential damages.  
 Elevations derived from National Geodetic Vertical Datum.

Date October 25, 2011