

TRILOBITE
TESTING, INC.

DRILL STEM TEST REPORT

Prepared For: **R & B Oil & Gas**

PO Box 195
Attica, KS 67009

ATTN: Tim Pierce

22-34s-10w Barber,KS

Swartz A #2

Start Date: 2011.09.12 @ 07:46:53

End Date: 2011.09.12 @ 18:39:31

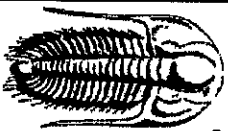
Job Ticket #: 43983 DST #: 1

Trilobite Testing, Inc

PO Box 362 Hays, KS 67601

ph: 785-625-4778 fax: 785-625-5620

Printed: 2011.09.19 @ 14:36:47



TRILOBITE
TESTING, INC

DRILL STEM TEST REPORT

R & B Oil & Gas

Swartz A #2

PO Box 195
Attica, KS 67009

22-34s-10w Barber, KS

Job Ticket: 43983

DST#: 1

ATTN: Tim Perce

Test Start: 2011.09.12 @ 07:46:53

GENERAL INFORMATION:

Formation: **Mississippi**
Deviated: **No** Whipstock: **ft (KB)**
Time Tool Opened: 10:35:53
Time Test Ended: 18:39:31
Interval: **4718.00 ft (KB) To 4747.00 ft (KB) (TVD)**
Total Depth: **4747.00 ft (KB) (TVD)**
Hole Diameter: **7.88** inches Hole Condition: **Good**

Test Type: **Conventional Bottom Hole (Initial)**
Tester: **Leal Cason**
Unit No: **45**

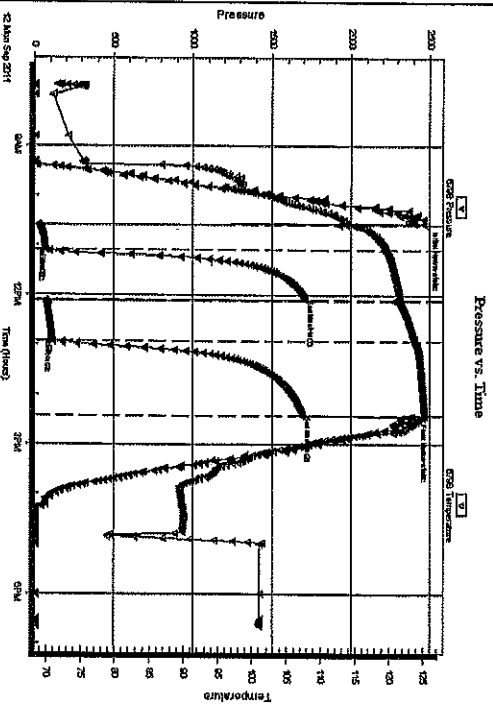
Reference Elevations: **1363.00 ft (KB)**
1350.00 ft (CF)
KB to GRFC: 13.00 ft

Serial #: 6798 **Inside**
Press@RunDepth: **110.81 psig @ 4719.00 ft (KB)**
Start Date: **2011.09.12** End Date:
Start Time: **07:46:54** End Time:

Capacity: **8000.00 psig**
Last Callb.: **2011.09.12**
Time On Bit: **2011.09.12 @ 10:34:23**
Time Off Bit: **2011.09.12 @ 14:26:38**

TEST COMMENT:

IF: Fair Blow, BOB in 17 minutes
IS: No Blowback
FE: Fair Blow, BOB in 6 minutes
FS: No Blow back



PRESSURE SUMMARY

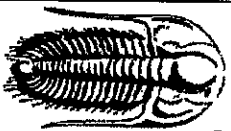
Time (Min.)	Pressure (psig)	Temp (deg F)	Annotation
0	2463.08	113.68	Initial Hydro-static
2	22.78	113.68	Open To Flow (1)
32	69.48	119.52	Shut-In(1)
92	1712.03	121.69	End Shut-In(1)
93	64.34	120.96	Open To Flow (2)
142	110.81	123.75	Shut-In(2)
232	1694.66	125.28	End Shut-In(2)
233	2385.94	124.90	Final Hydro-static

Recovery

Length (ft)	Description	Volume (bbl)
0.00	419 GIP	0.00
119.00	Water	0.59
62.00	SOA/CW 2%O 22%M 76%W	0.87
30.00	GOA/M 10%G 6%O 40%W 44%M	0.42

Gas Rates

Choke (Inches)	Pressure (psig)	Gas Rate (Mc/d)



TRILOBITE
TESTING, INC

DRILL STEM TEST REPORT

TOOL DIAGRAM

R & B Oil & Gas
PO Box 195
Atteca, KS 67009
ATTN: Tim Perce

Swartz A #2
22-34s-10w Barber,KS
Job Ticket: 43983
DST#:1
Test Start: 2011.09.12 @ 07:46:53

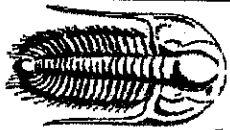
Tool Information

Drill Pipe:	Length: 4595.00 ft	Diameter:	3.80 inches	Volume:	64.46 bbl	Tool Weight:	2100.00 lb
Heavy Wt. Pipe:	Length: ft	Diameter:	0.00 inches	Volume:	0.00 bbl	Weight set on Packer:	25000.00 lb
Drill Collar:	Length: 119.00 ft	Diameter:	2.25 inches	Volume:	0.59 bbl	Weight to Pull Loose:	76000.00 lb
				<u>Total Volume:</u>	<u>65.05 bbl</u>	Tool Chased	0.00 ft
Drill Pipe Above KB:	16.00 ft					String Weight: Initial	72000.00 lb
Depth to Top Packer:	4718.00 ft					Final	74000.00 lb
Depth to Bottom Packer:	ft						
Interval betw een Packers:	29.00 ft						
Tool Length:	49.00 ft						
Number of Packers:	2	Diameter:	6.75 inches				

Tool Comments:

Tool Description **Length (ft)** **Serial No.** **Position** **Depth (ft)** **Accum. Lengths**

Shut In Tool	5.00			4703.00	
Hydraulic tool	5.00			4708.00	
Packer	5.00			4713.00	20.00
Packer	5.00			4718.00	
Stubb	1.00			4719.00	
Recorder	0.00	6798	Inside	4719.00	
Recorder	0.00	8367	Outside	4719.00	
Perforations	25.00			4744.00	
Bullnose	3.00			4747.00	29.00
	Total Tool Length:			49.00	Bottom Packers & Anchor



TRIOBITE
TESTING, INC

DRILL STEM TEST REPORT

FLUID SUMMARY

R & B Oil & Gas

Swartz A #2

PO Box 195
Attica, KS 67009

22-34s-10w Barber, KS

Job Ticket: 43983

DST#: 1

ATTN: Tim Perce

Test Start: 2011.09.12 @ 07:46:53

Mud and Cushion Information

Mud Type: Gel Chem
Mud Weight: 10.00 lb/gal
Viscosity: 46.00 sec/qt
Water Loss: 12.37 in³
Resistivity: ohmum
Salinity: 4000.00 ppm
Filter Cake: 0.20 inches

Cushion Type: Oil API: deg API
Cushion Length: ft
Cushion Volume: bbl
Gas Cushion Type: Water Salinity: 115000 ppm
Gas Cushion Pressure: psig

Recovery Information

Recovery Table

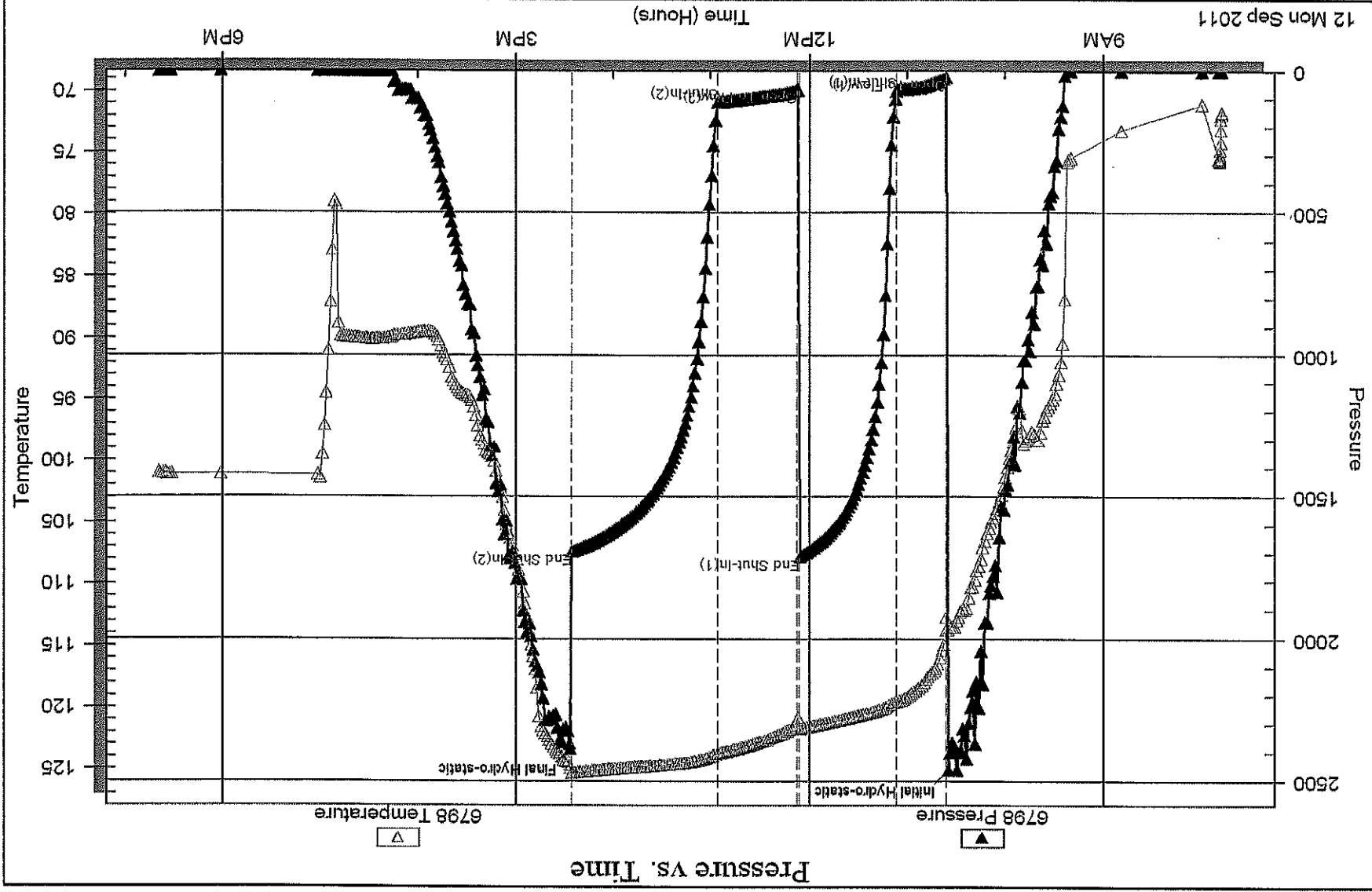
Length ft	Description	Volume bbl
0.00	419 GIP	0.000
119.00	Water	0.585
62.00	SOMC/W 2%O 22%AM 76%AW	0.870
30.00	GOVCM 10%G 6%O 40%AW 44%AM	0.421

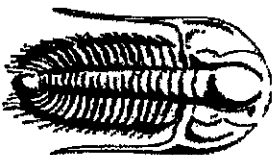
Total Length: 211.00ft Total Volume: 1.876 bbl

Num Fluid Samples: 0 Num Gas Borbs: 0 Serial #:

Laboratory Name: Laboratory Location:

Recovery Comments: RMW was .06 @ 85 degrees





TRILOBITE
TESTING, INC.

DRILL STEM TEST REPORT

Prepared For: **R & B Oil & Gas**

PO Box 195
Attica, KS 67009

ATTN: Tim Pierce

22-34s-10w Barber,KS

Swartz A #2

Start Date: 2011.09.13 @ 13:55:27

End Date: 2011.09.13 @ 20:57:57

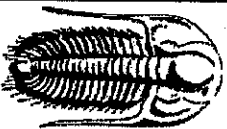
Job Ticket #: 43984 DST #: 2

Trilobite Testing, Inc

PO Box 362 Hays, KS 67601

ph: 785-625-4778 fax: 785-625-5620

Printed: 2011.09.19 @ 14:35:44



TRILOBITE
TESTING, INC

DRILL STEM TEST REPORT

R & B Oil & Gas

Swartz A #2

PO Box 196
Atfca, KS 67009

22-34s-10w Barber,KS

Job Ticket: 43984 **DST#:** 2

ATTN: Tim Ferce

Test Start: 2011.09.13 @ 13:55:27

GENERAL INFORMATION:

Formation: **Simpson** ft (KB)
 Deviated: No Whipstock:
 Time Tool Opened: 16:15:42
 Time Test Ended: 20:57:57
 Interval: **5136.00 ft (KB) To 5160.00 ft (KB) (TVD)**
 Total Depth: **5160.00 ft (KB) (TVD)**
 Hole Diameter: **7.88** inches-Hole Condition: Good

Test Type: Conventional Bottom Hole (Reset)
 Tester: Leal Cason
 Unit No: 45
 Reference Elevations: **1363.00 ft (KB)**
1350.00 ft (CF)
13.00 ft

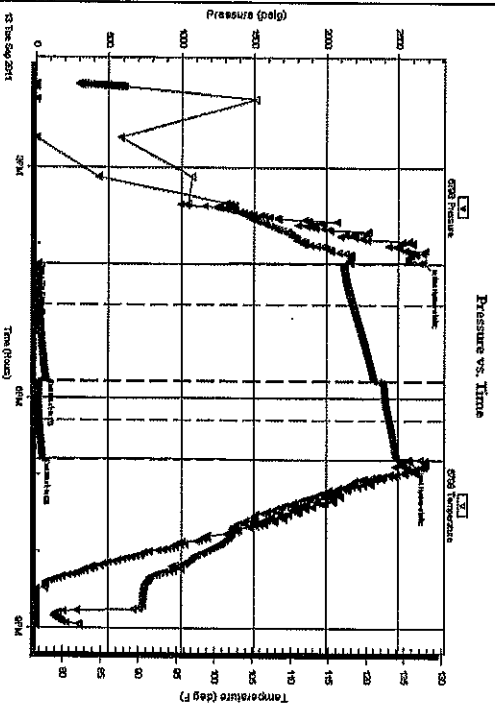
KB to GRICE: 13.00 ft

Serial #: 6798 Inside
 Press.@RunDepth: 18.98 psig @ 5137.00 ft (KB)
 Start Date: 2011.09.13 End Date:
 Start Time: 13:55:28 End Time:

Capacity: 8000.00 psig
 Last Calib.: 2011.09.13
 Time On Btm: 2011.09.13 @ 16:14:12
 Time Off Btm: 2011.09.13 @ 18:48:27

TEST COMMENT: IF: Weak Surface Blow , Dead @ 7 minutes

SI: No Blow
 FI: No Blow
 FSI: No Blow



PRESSURE SUMMARY

Time (Mfn.)	Pressure (psig)	Temp (deg F)	Annotation
0	2667.19	117.80	Initial Hydro-static
2	15.24	117.16	Open To Flow (1)
34	18.66	118.12	Shut-In(1)
93	70.36	121.00	End Shut-In(1)
93	15.44	121.63	Open To Flow (2)
123	18.98	122.96	Shut-In(2)
154	45.43	123.98	End Shut-In(2)
155	2575.68	127.74	Final Hydro-static

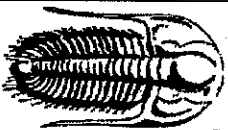
Recovery

Length (ft)	Description	Volume (bbl)
5.00	Mald	0.02

* Recovery from multiple tests

Gas Rates

Choke (inches)	Pressure (psig)	Gas Rate (Mcf/d)



TRIOBITE
TESTING, INC

DRILL STEM TEST REPORT

TOOL DIAGRAM

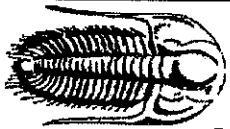
R & B Oil & Gas
PO Box 195
Atlica, KS 67009
ATTN: Tim Perce

Swartz A #2
22-34s-10w Barber, KS
Job Ticket: 43984
DST#: 2
Test Start: 2011.09.13 @ 13:55:27

Tool Information

Drill Pipe:	Length: 5027.00 ft	Diameter:	3.80 inches	Volume:	70.52 bbl	Tool Weight:	2100.00 lb
Heavy Wt. Pipe:	Length: ft	Diameter:	0.00 inches	Volume:	0.00 bbl	Weight set on Packer:	25000.00 lb
Drill Collar:	Length: 119.00 ft	Diameter:	2.25 inches	Volume:	0.59 bbl	Weight to Pull Loose:	84000.00 lb
				<u>Total Volume:</u>	<u>71.11 bbl</u>	Tool Chased	ft
Drill Pipe Above KB:	30.00 ft					String Weight:	Initial 76000.00 lb
Depth to Top Packer:	5136.00 ft					Final	76000.00 lb
Depth to Bottom Packer:	ft						
Interval between Packers:	24.00 ft						
Tool Length:	44.00 ft						
Number of Packers:	2	Diameter:	6.75 inches				
Tool Comments:							

Tool Description	Length (ft)	Serial No.	Position	Depth (ft)	Accum. Lengths
Shut In Tool	5.00			5121.00	
Hydraulic tool	5.00			5126.00	
Packer	5.00			5131.00	20.00
Packer	5.00			5136.00	
Stubb	1.00			5137.00	
Recorder	0.00	6798	Inside	5137.00	
Recorder	0.00	8367	Outside	5137.00	
Perforations	20.00			5157.00	
Bullnose	3.00			5160.00	24.00
	Total Tool Length:				Bottom Packers & Anchor
				44.00	



TRILOBITE
TESTING, INC

DRILL STEM TEST REPORT

FLUID SUMMARY

R & B Oil & Gas

Swartz A #2

PO Box 195
Attica, KS 67009

22-34s-10w Barber,KS

Job Ticket: 43984 DST#: 2

ATTN: Tim Ferce

Test Start: 2011.09.13 @ 13:55:27

Mud and Cushion Information

Mud Type: Gel Chem	Cushion Type:	Oil API:	deg API
Mud Weight: 10.00 lb/gal	Cushion Length:	Water Salinity:	ppm
Viscosity: 47.00 sec/cf	Cushion Volume:	Gas Cushion Type:	bbl
Water Loss: 10.38 in ³	Gas Cushion Pressure:		psig
Resistivity: ohmcm			
Salinity: 7000.00 ppm			
Filter Cake: 0.20 inches			

Recovery Information

Recovery Table

Length ft	Description	Volume bbl
5.00	Mud	0.025

Total Length: 5.00ft Total Volume: 0.025 bbl

Num Fluid Samples: 0 Num Gas Borts: 0 Serial #:

Laboratory Name: Laboratory Location:

Recovery Comments:

