

Timothy G. Pierce

Petroleum Geologist

GEOLOGIST'S REPORT DRILLING TIME AND SAMPLE LOG

COMPANY R & B Oil and Gas, Inc.

LEASE Swartz 'A' #2

FIELD Wildcat

LOCATION S/2 NE NW

SEC 22 TWP 34S RGE 10W

COUNTY Barber STATE Kansas

CONTRACTOR Hardt Drilling Rig #1

SPUD 9-07-2011 COMP 9-14-2011

RTD 5211 LTD 5213

MUD UP 3161 TYPE MUD Chemical

SAMPLES SAVED FROM 4000 TO RTD

DRILLING TIME KEPT FROM 4000 TO RTD

SAMPLES EXAMINED FROM 4000 TO RTD

GEOLOGICAL SUPERVISION FROM 4040 to RTD

GEOLOGIST ON WELL Tim Pierce

ELEVATIONS

KB 1363'

DF _____

GL 1353'

Measurements Are All
From Kelly Bushing

CASING

CONDUCTOR _____

SURFACE 8-5/8" at 271'

PRODUCTION None

ELECTRICAL SURVEYS

DIL / CN-CD

Log-Tech

FORMATION TOPS

ELECTRIC LOG

SAMPLE

Heebner Sh. 3586 (-2223) NA

Latan L.S. NA NA

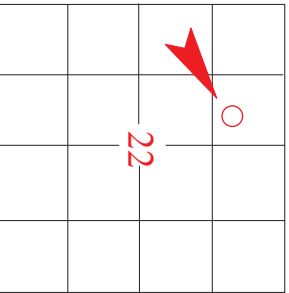
Stark Sh. 4330 (-2967) 4329 (-2966)

Cherokee Sh. 4571 (-3208) 4569 (-3206)

Mississippi 4677 (-3314) 4677 (-3314)

Viola 5061 (-3698) 5060 (-3697)

Simpson 5149 (-3786) 5143 (-3780)



API # 15-007-23.757

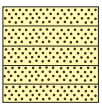
REMARKS Due to negative results on DST's and lack of commercial shows the decision was made to plug the Swartz 'A' #2.

Timothy G. Pierce

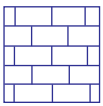
LEGEND



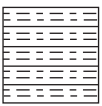
Anhydrite



Sandstone



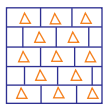
Limestone



Shale



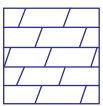
Carb Sh



Cherty LS



Chert



Dolomite

DRILLING TIME IN MINUTES PER FOOT

Rate of Penetration Decreases



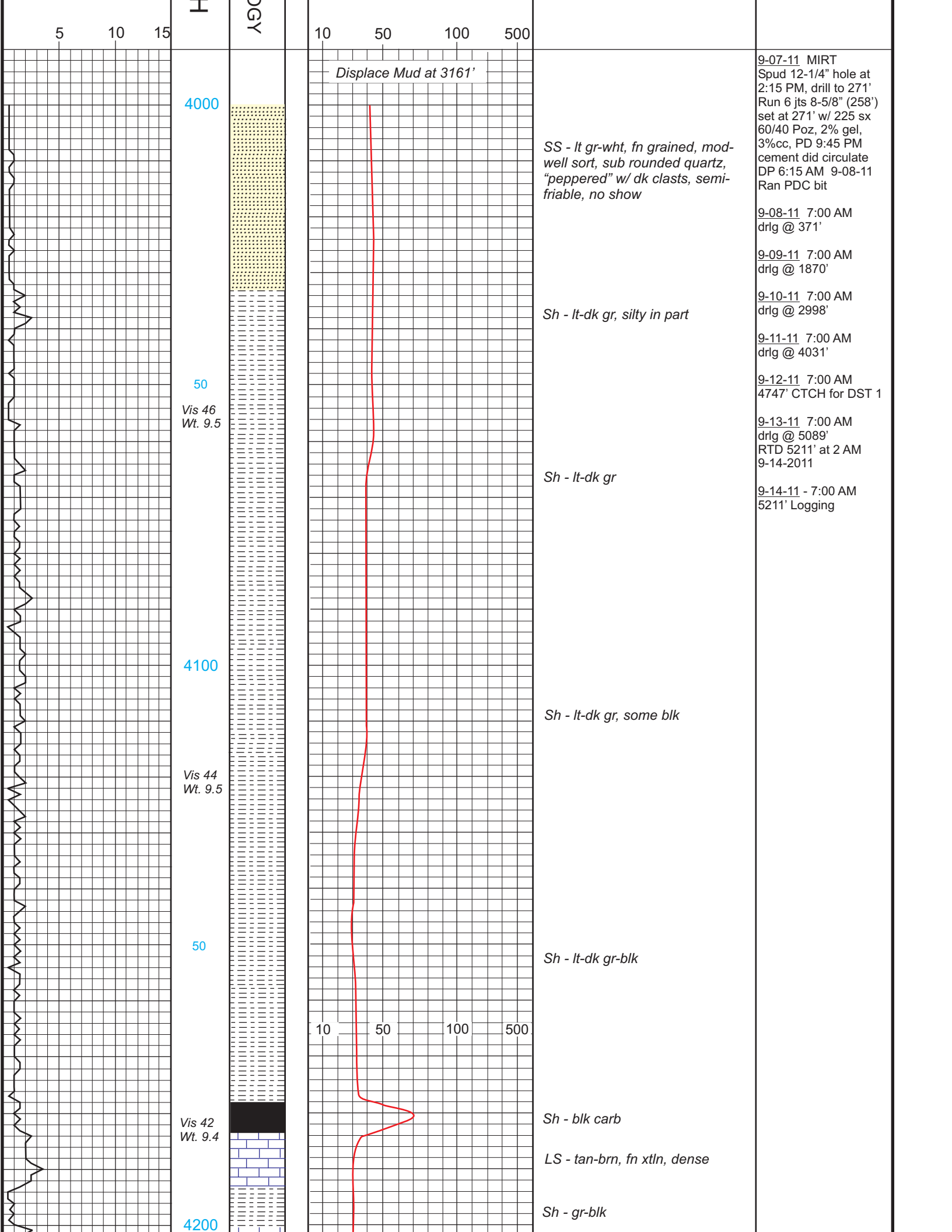
DEPTH

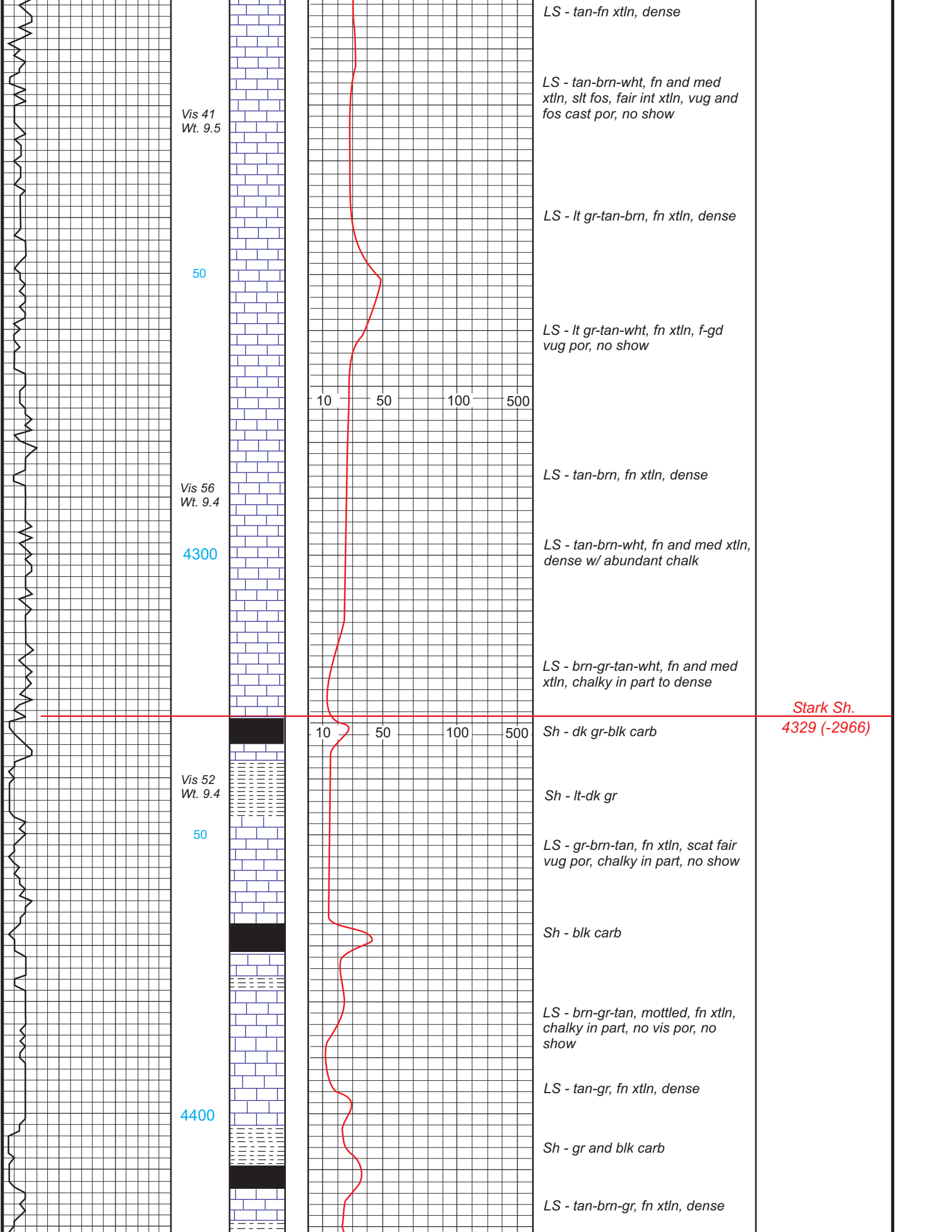
LITHOLOG

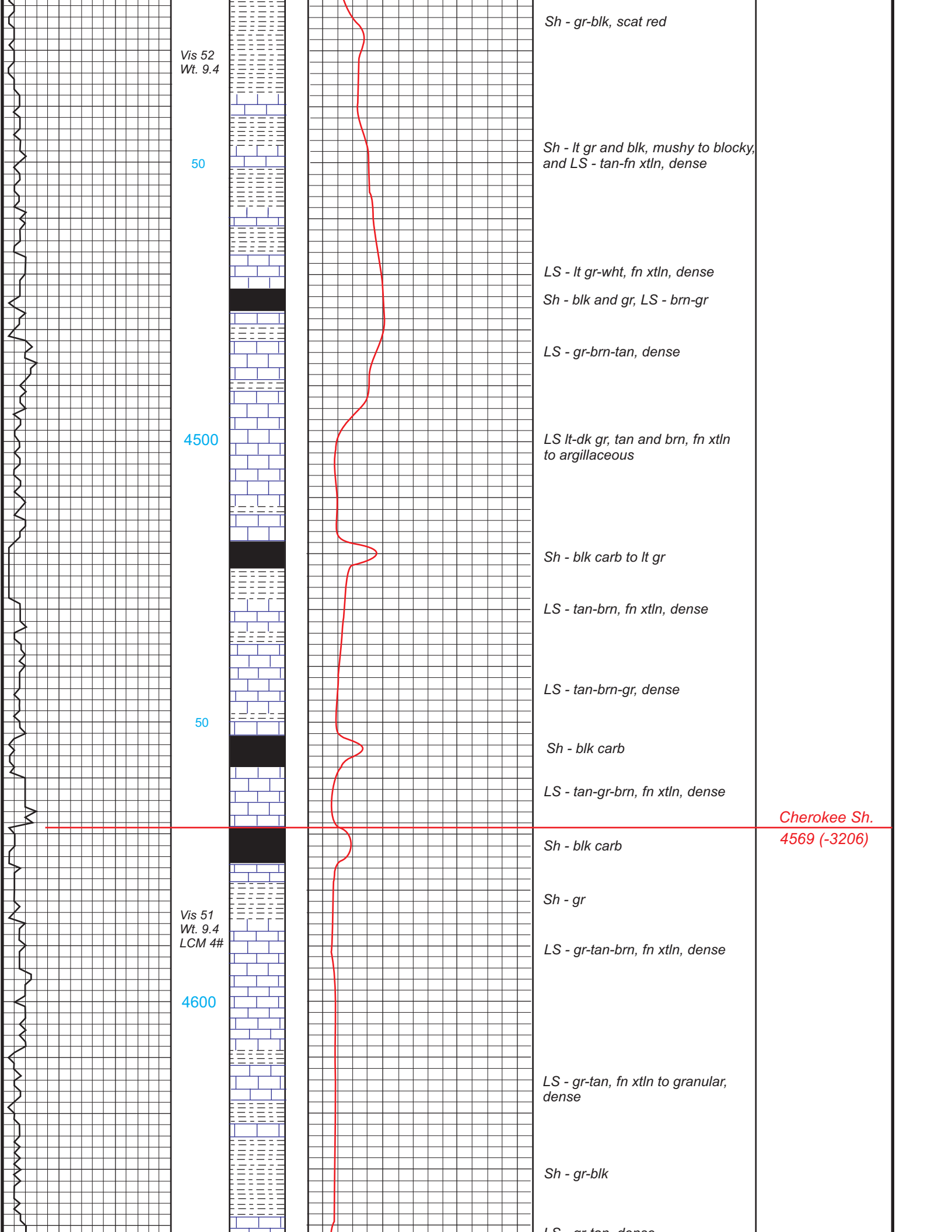
GAS SCALE

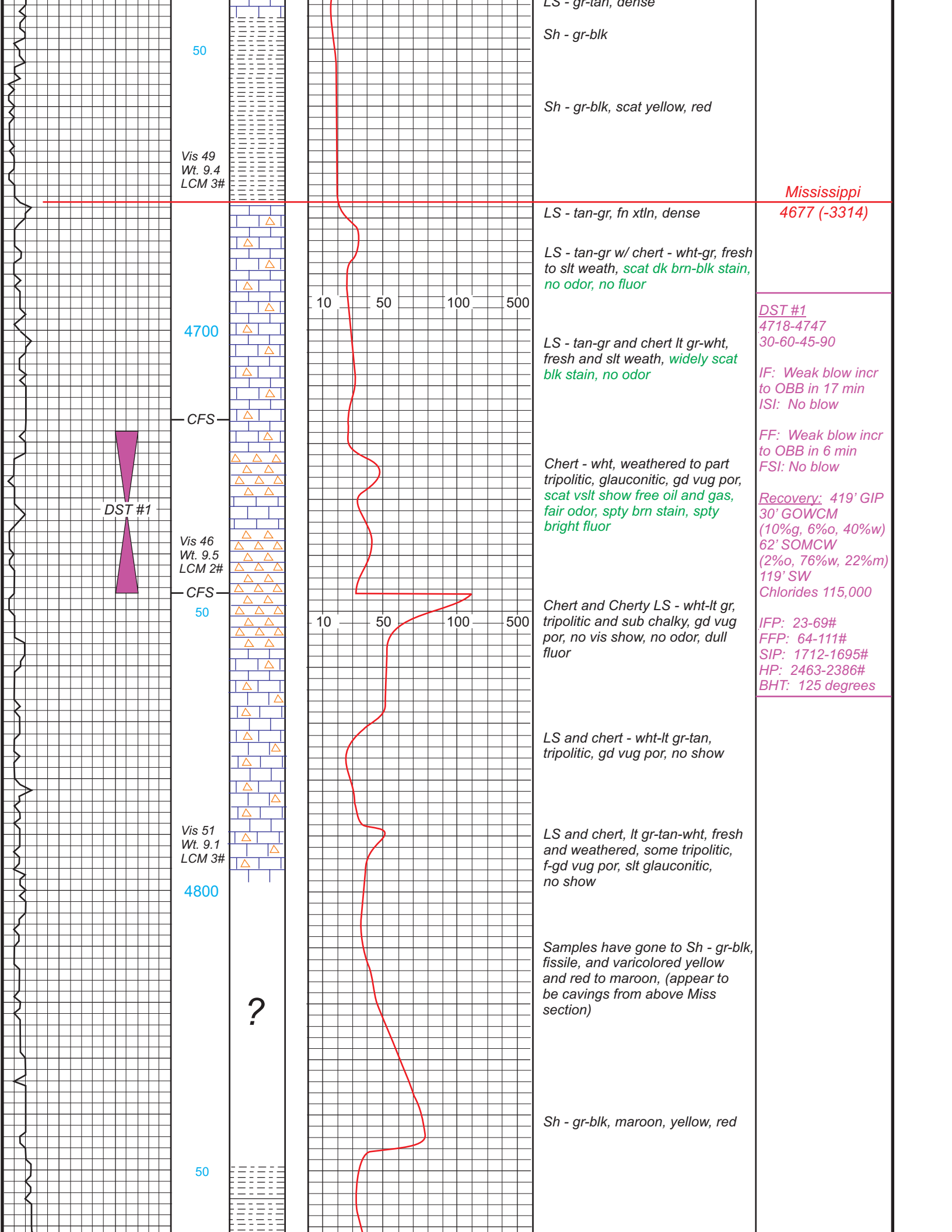
SAMPLE DESCRIPTION

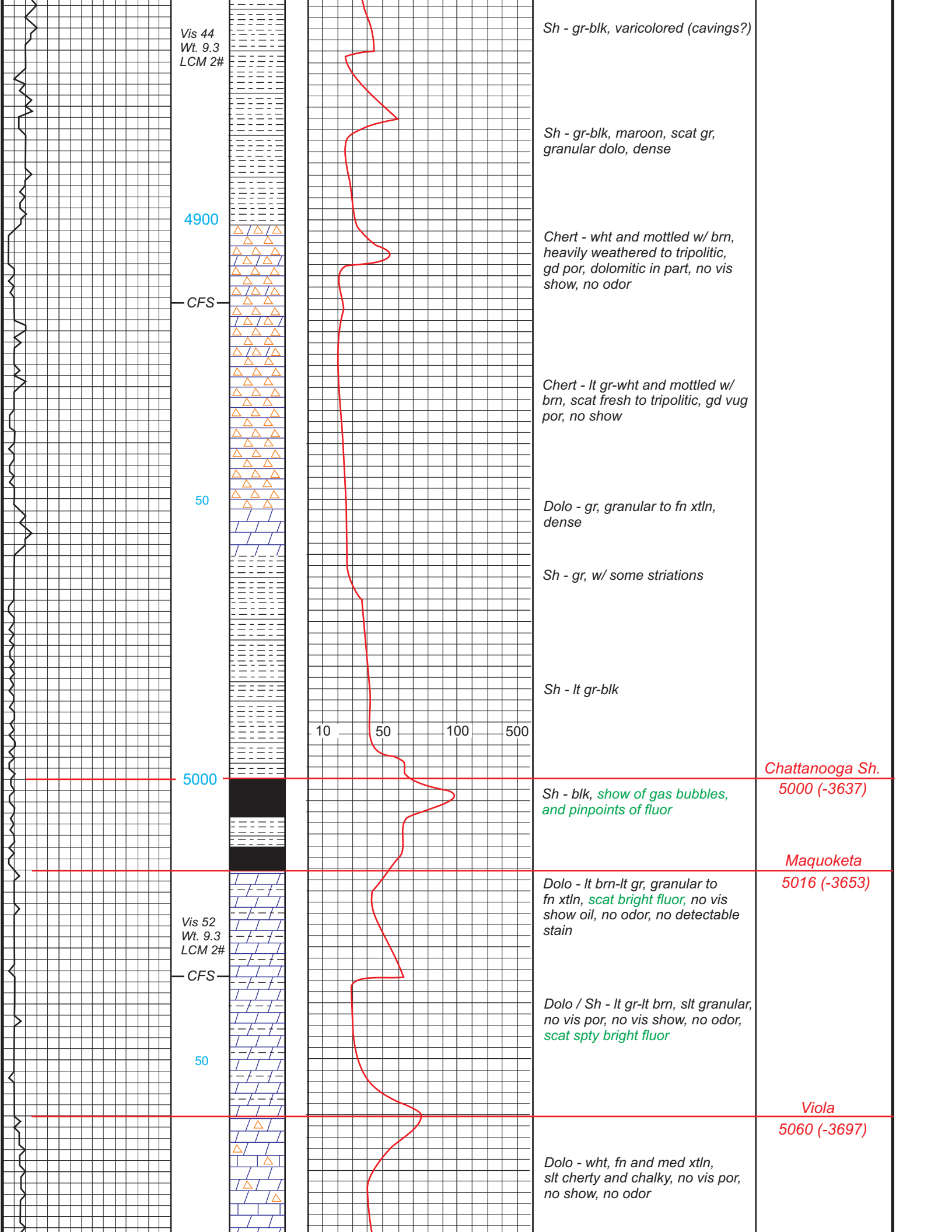
REMARKS











Vis 44
Wt. 9.3
LCM 2#

4900

CFS

50

5000

Vis 52
Wt. 9.3
LCM 2#

CFS

50

Sh - gr-blk, varicolored (cavings?)

Sh - gr-blk, maroon, scat gr,
granular dolo, dense

Chert - wht and mottled w/ brn,
heavily weathered to tripolitic,
gd por, dolomitic in part, no vis
show, no odor

Chert - lt gr-wht and mottled w/
brn, scat fresh to tripolitic, gd vug
por, no show

Dolo - gr, granular to fn xtlr,
dense

Sh - gr, w/ some striations

Sh - lt gr-blk

10 50 100 500

Chattanooga Sh.
5000 (-3637)

Sh - blk, show of gas bubbles,
and pinpoint of fluor

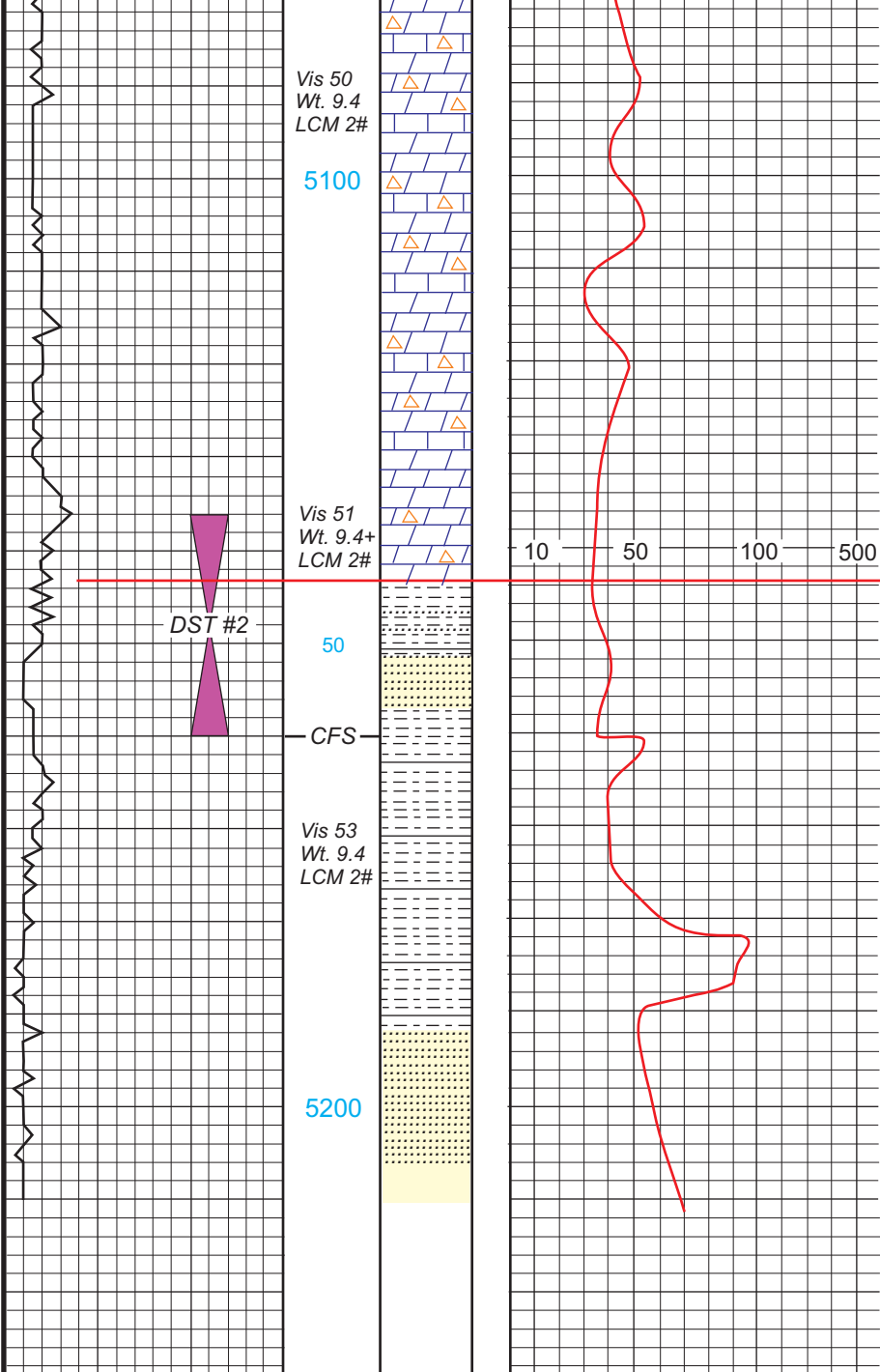
Maquoketa
5016 (-3653)

Dolo - lt brn-lt gr, granular to
fn xtlr, scat bright fluor, no vis
show oil, no odor, no detectable
stain

Dolo / Sh - lt gr-lt brn, slit granular,
no vis por, no vis show, no odor,
scat spty bright fluor

Viola
5060 (-3697)

Dolo - wht, fn and med xtlr,
slt cherty and chalky, no vis por,
no show, no odor



Dolo - wht-lt gr, fn xtl to slt gran, chalky in part, no vis por, no show

Dolo - wht-lt gr, fn xtl and gran, dense, scat chert

Dolo - lt gr-wht, fn xtl, granular, gr-brn vitreous chert

Sh - blk-gr, scat green and SS - lt gr-wht-clear, fn grained, silty

SS - lt gr-wht-clear, fn grained, mod sort, sub round grains, silty in part, semi-friable to friable, scat bright fluor, scat slt show oil film, v faint odor, no detectable stain

Sh - lt gr-blk

SS - lt gr-clear, fn grained, mod sort, sub ang, very tightly cem, no vis por, no show

Simpson
5143 (-3780)

DST #2
5136-5160
30-60-30-30

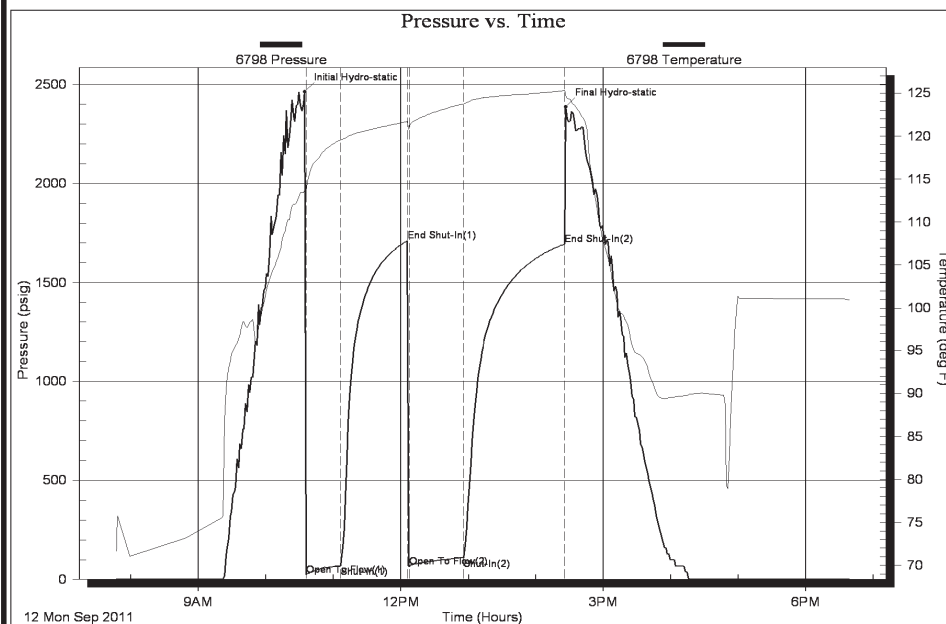
IF: Weak blow died in 7 min
ISI: No blow

FF: No blow
FSI: No blow

Recovery: 5' Mud

IFP: 15-19#
FFP: 15-19#
SIP: 70-45#
HP: 2667-2576#
BHT: 124 degrees

Serial #: 6798 Inside R & B Oil & Gas 22-34S-10W Barber DST Test Number: 1



DST #1
4718-4747
30-60-45-90

IF: Weak blow incr to OBB in 17 min
ISI: No blow

FF: Weak blow incr to OBB in 6 min
FSI: No blow

Recovery: 419' GIP
30' GOWCM (10%g, 6%o, 40%w)
62' SOMCW (2%o, 76%w, 22%m)
119' SW
Chlorides 115,000

IFP: 23-69#
FFP: 64-111#
SIP: 1712-1695#
HP: 2463-2386#

