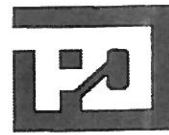


TRANS PACIFIC OIL CORPORATION

TRANS PACIFIC OIL



API #15-135-25289

GEOLOGIST'S REPORT DRILLING TIME AND SAMPLE LOG

Geologist on Well Beth Isern & Cristina Goodrich
 LEASE MELODY #2
 FIELD NEXUS
 LOCATION 1492' FSL 1017' FWL
 SEC 2 TWSP 18S RGE 24w
 COUNTY Ness STATE Kansas
 CONTRACTOR Duke Drilling Rig #4
 SPUD 08/17/11 COMP 8/24/11
 RTD 4470 LTD 4474
 MUD UP 3500 TYPE MUD CHEMICAL
 SAMPLES SAVED FROM 3700 TO RTD
 DRILLING TIME KEPT FROM 3400 TO RTD
 SAMPLES EXAMINED FROM 3700 TO RTD
 GEOLOGICAL SUPERVISION FROM 3950
 REFERENCE WELL Melody #1 Palomino Petroleum

ELEVATIONS

KB 2360
 DF _____
 GL 2351

Measurements Are All
From Kelly Bushing

CASING

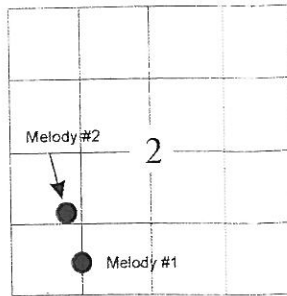
CONDUCTOR _____
 SURFACE 8 5/8" @ 222'
 PRODUCTION 5 1/2" @ 3385'

ELECTRICAL SURVEYS

DIL, DUCP

LOG-TECH

Formation	Sample Tops	E-log Tops	Struct Pos.
Anhydrite	1645 (+ 715)	1650 (+710)	-3
Base Anhydrite	1679 (+ 681)	1683 (+677)	-4
Heebner	3739 (-1379)	3740 (-1380)	-3
Lasning	3780 (-1420)	3782 (-1422)	-1
BKC	4074 (-1710)	4078 (-1718)	-4
Marmaton	4115 (-1755)	4116 (-1756)	-6
Fort Scott	4274 (-1914)	4276 (-1916)	-6
Cherokee Shale	4300 (-1940)	4301 (-1941)	-6
Cherokee Sand	4346 (-1986)	4348 (-1988)	+3
Mississippi	4400 (-2040)	4400 (-2040)	+41



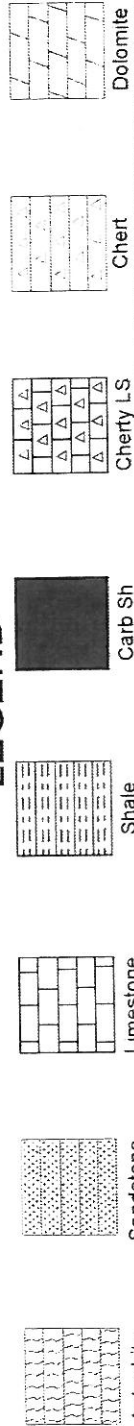
REMARKS

it was decided to set production casing on the Melody #2 due to the positive
DST #1 and the development of the Cherokee Sand.

Respectfully Submitted,

Beth Isern and Cristina Goodrich

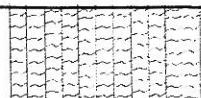
LEGEND



DEPTH

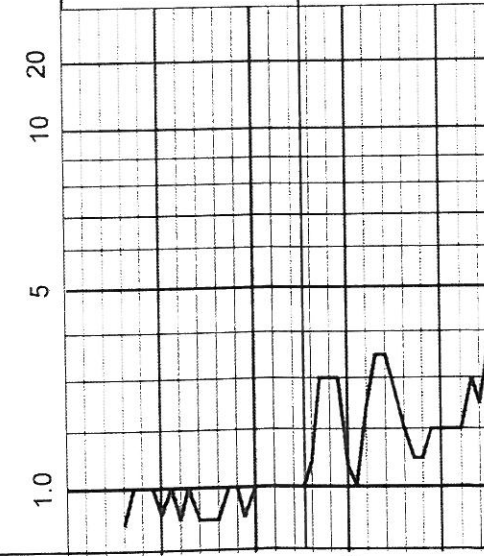


LITHOLOGY



DRILLING TIME IN MINUTES PER FOOT

Rate of Penetration Decreases



SAMPLE DESCRIPTION

REMARKS

Anhydrite
1645 (+ 715)

Anhydrite

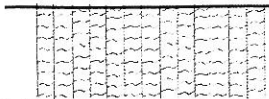
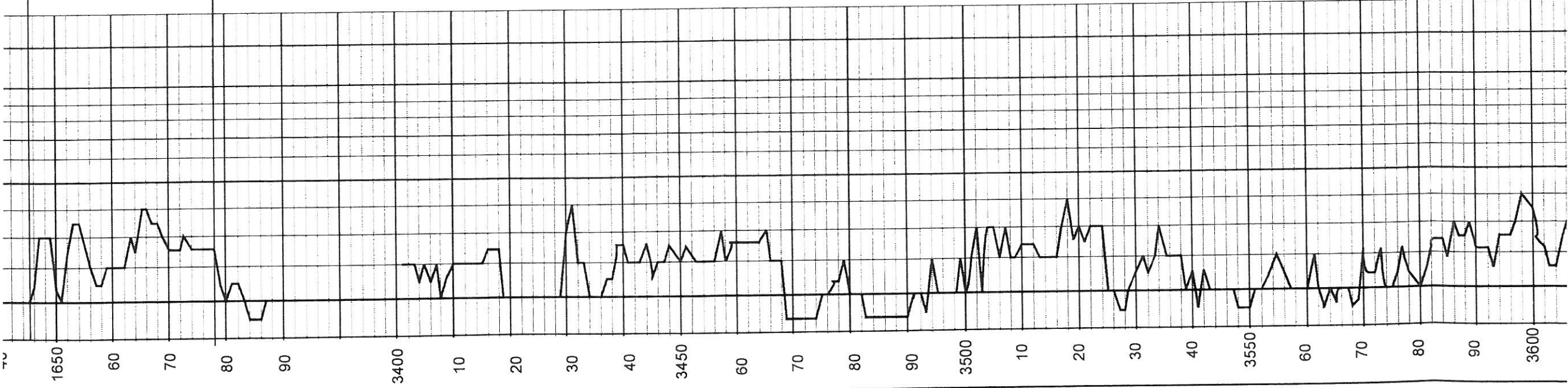
1645 (+ 715)

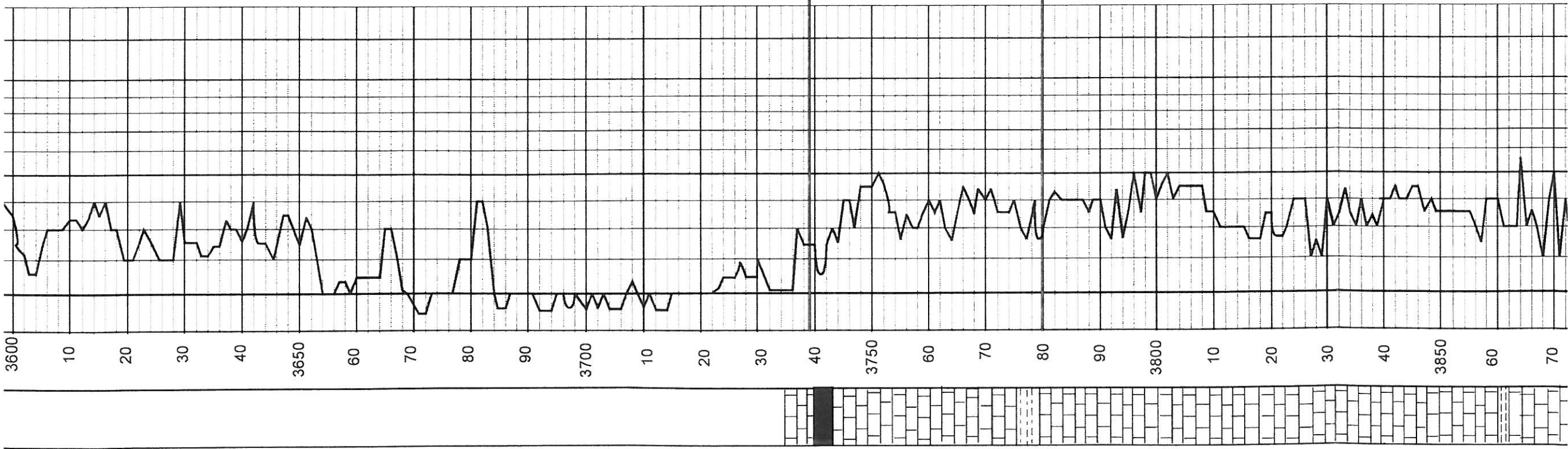
Base/ Anhydrite

1678 (+ 681)

DAILY PENETRATION

8-17-11 Spud @ 3:30 PM
8-18-11 Drilling at 362'
8-19-11 Drilling at 2270'
8-20-11 Drilling at 3097'
8-21-11 Drilling at 3672'
8-22-11 Drilling at 4090'
8-23-11 Testing at 4360'
8-24-11 Testing at 4380'
8-25-11 Ran 4-1/2" casing





Crn, fxlh to sl chalky ls w/ pr-fr ppt por. Gry, rust sh. NS

Crn, ooc. & foss ls w/ fr-gd ooc. & foss-cast por.

Crn fxlh & v foss ls w/ gd vis. por., sli cherty. NS

Heebner Sh.
3739 (-1379)

Blk, carb. shale

Lt tan-gry. vfxlh & ds ls, partly foss, no por. NS

Crn-wht, fxlh ls, v pr por, rare foss, NS

Lansing

3780 (-1420)

Ls AA w/ few pcs lt gry ds ls & dk gry shale

Crn-tan fxlh & partly foss ls w/ v pr por. NS

Brn, micro xlh ls w/ few pc brn sh

Crn-dk tan ds ls tr cht & dk gry sh NS

Dk gy sh

Crn-lt gy, fxlh - sli chalky foss ls, pr-fr foss-cast por. NS

Tan-crm ds ls, tr vgy por., tr cht NS

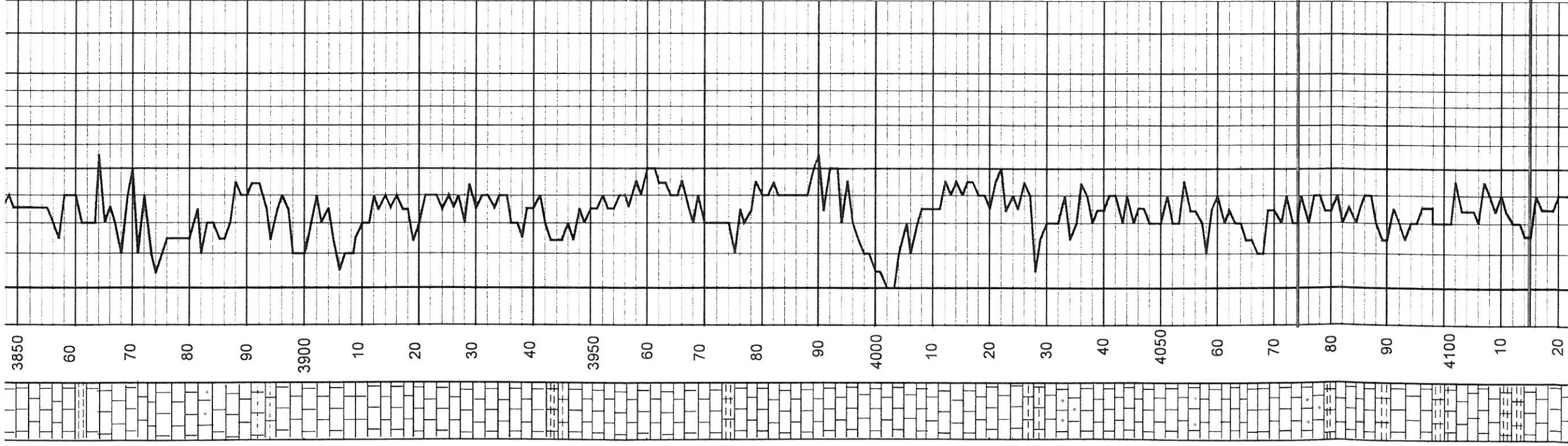
Ls-crm, dense, trace poor int xlh por., f-m xln, Sh-gry grn NS

Ls-crm-lt gry, dense, few pc have poor vug por. No stn.

Sh-gry, grn, brn

Ls-AA, chalky i.p. trace pyrite

Ls-crm-brn dense no stn NS



Ls-crm-lt gry, dense, few pc have poor vug por. No stn.

Sh-gry, grn, brn
Ls-AA, chalky i.p. trace pyrite

Ls-crm-brn, dense, no stn, NS

Ls-crm, ool. poor scatt. inter. ool. por., plus some gry sh

Ls-crm, mostly foss., chalky i.p., fxln, No stn

Ls-crm, lt brn, foss i.p, sli chalky, fxln, no stn

Ls-crm, foss. i.p., fxln, mottled texture, no stn

Ls-crm, fair scatt. por., fxln, md hd-hd, no stn, NS

Ls-tan-crm, foss ip, fxln, dense,

Sh-blk, gry, and dk grn

Ls-gry, grn, lt brn, foss, fxln, no vis por

Ls-f-mxln, crm, scattered vug por, barren, NS

Ls-fxln, crm, dense, and brn lst, dense foss ip,

Sh-gry-grn

Ls-fxln, crm-brn, dense, no stn
Soft grn shale

Ls-brn, dense, fxln, no vis por.
found 1 pc pyrite, still some grn sh

Ls-crm-brn, dense, fxln, no vis por.
foss ip

Ls-lt crm-wht. sli chalky, also brn lst dense fxln and foss

Ls-lt crm, sli chalky, sli foss. fxln, also some dk grn shales

Ls-crm, hard, dense, foss, ooc. ip
sli chalky, poor ppt interxln & ooc. por, NS

Sh-dk-lt grn, brn

Ls-ool, crm, hard, dense, foss i.p, few pc chert,

Sh-carb, blk-dk grn

Ls-crm, dense, foss. i.p, few pc wht cherty ls

Ls-crm, fxln, dense, some pc ool., foss ip, hard poor por.

Ls-crm, fxln, foss, few pc microxln, crm, foss i.p, few pc why frsh chert, very poor interxln por.
trace vug por

Ls-crm, ool-ool., dense, hard vfxln, 1 pc pyrite

Sh-gry-grn

Ls-crm-brn, fxln, sli chalky, foss. ip

Sh-blk, dk grn, grn, brn

Ls-lt brn, mxln-fxln, dense

Sh-AA

Ls-crm-brn, mottled, foss, ooc. ip

Many shales AA

Ls-brn, vfxln, wh lst-foss, hard

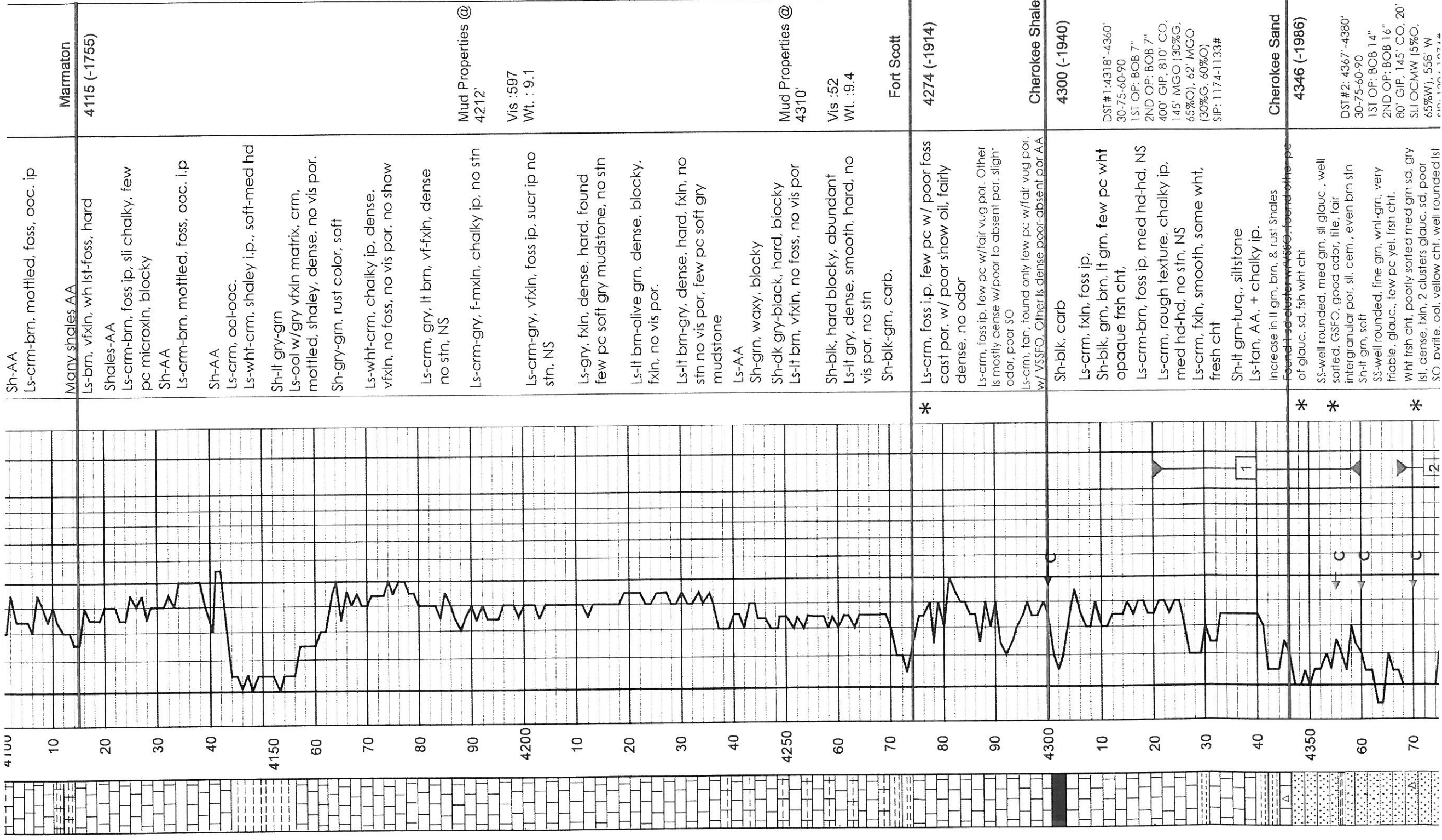
Sh-ls-AA

Base / Kansas City

4074 (-1714)

Marmaton

4115 (-1755)



Sh-AA
Ls-frm-brn, mottled, foss, ooc. ip

Marmaton
4115 (-1755)

Many shales AA
Ls-brn, vfxln, wh list-foss, hard

Shales-AA
Ls-frm-brn, foss ip, sli chalky, few pc microxln, blocky

Sh-AA
Ls-frm-brn, mottled, foss, ooc. i.p

Sh-AA
Ls-frm, ool-ooc.

Ls-wht-frm, shaley i.p., soft-med hd

Sh-lt gry-grn
Ls-ool w/gry vfxln matrix, crm, mottled, shaley, dense, no vis por.

Sh-gry-grm, rust color, soft

Ls-wht-frm, chalky ip, dense, vfxln, no foss, no vis por. no show

Ls-frm, gry, lt brn, vf-fxln, dense no stn, NS

Ls-frm-gry, f-mxln, chalky ip, no stn

Ls-frm-gry, vfxln, foss ip, sucr ip no stn, NS

Ls-gry, fxln, dense, hard, found few pc soft gry mudstone, no stn

Ls-lt brn-olive grn, dense, blocky, fxln, no vis por.

Ls-lt brn-gry, dense, hard, fxln, no stn no vis por, few pc soft gry mudstone

Ls-AA
Sh-grn, waxy, blocky

Sh-dk gry-black, hard, blocky

Ls-lt brn, vfxln, no foss, no vis por

Sh-blk, hard blocky, abundant

Ls-lt gry, dense, smooth, hard, no vis por, no stn

Sh-blk-grm, carb.

*
Ls-frm, foss ip, few pc w/ poor foss cast por. w/ poor show oil, fairly dense, no odor

Ls-frm, foss ip, few pc w/fair vug por. Other is mostly dense w/poor to absent por. slight odor, poor SO

Ls-frm, tan, found only few pc w/fair vug por. w/ VSSFO. Other is dense poor-absent por AA

Fort Scott
4274 (-1914)

Sh-blk, carb

Ls-frm, fxln, foss ip,

Sh-blk, grn, brn, lt grn, few pc wht opaque frsh cht,

Ls-frm-brn, foss ip, med hd-hd, NS

Ls-frm, rough texture, chalky ip, med hd-hd, no stn, NS

Ls-frm, fxln, smooth, some wht, fresh cht

Sh-lt grn-turq., siltstone

Ls-tan, AA, + chalky ip.

Increase in ll grn, brn, & rust shales found in section w/ VSSFO, found otherwise of glauc. sd, fish wht cht

*
SS-well rounded, med grn, sil glauc., well sorted, GSFO, good odor, lite, fair intergranular por, sil. cem., even brn sin

Sh-lt grn, soft

SS-well rounded, fine grn, whl-grn, very friable, glauc., few pc yel, fish cht.

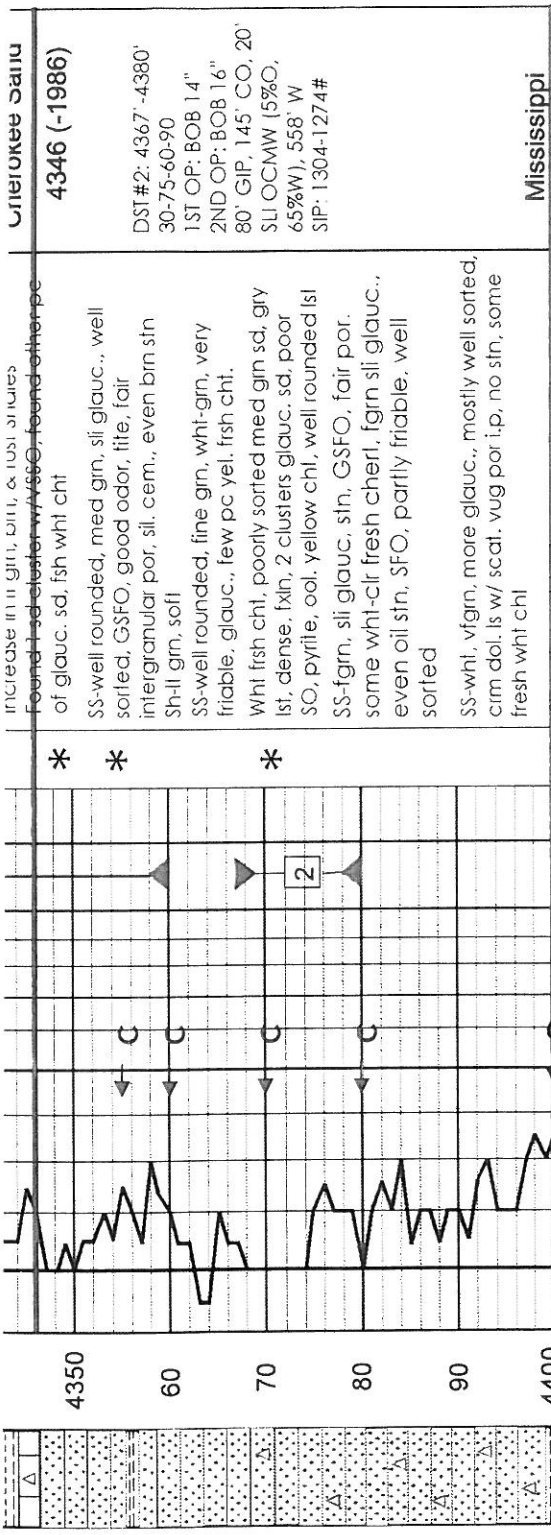
Wht fish cht, poorly sorted med grn sd, gry list, dense, fxln, 2 clusters glauc. sd, poor SO, avrite, ool, yellow cht, well rounded list

Cherokee Shale
4300 (-1940)

DST#1: 4318'-4360'
30-75-60-90
1ST OP: BOB 7"
2ND OP: BOB 7"
400' GIF, 810' CO,
145' MGO (30%G,
65%O), 62' MGO
(30%G, 60%O)
SIP: 1174-1133#

Cherokee Sand
4346 (-1986)

DST#2: 4367'-4380'
30-75-60-90
1ST OP: BOB 14"
2ND OP: BOB 16"
80' GIF, 145' CO, 20'
SLI OCMW (5%O,
65%W), 558' W
SIP: 1174-1133#



Serial # 6625 Inside Trans Pacific Oil Corp

2-18s-24w Ness

Pressure vs. Time

6625 Pressure

6625 Temperature

Initial Hydro-static

Final Hydro-static

Shut-In(1)

Shut-In(2)

Open To Flow(1)

Open To Flow(2)

End Shut-In(1)

End Shut-In(2)

23 Tue Aug 2011

6 AM 12 PM 3 PM

Time (Hours)

Pressure (psig)

Temperature (deg F)

2250 2000 1750 1500 1250 1000 750 500 250 0

4350 60 70 80 90 4400 10 20 30 40 4450 60 70

4346 (-1986)

DST #2

6625 Pressure

6625 Temperature

Initial Hydro-static

Final Hydro-static

2-18s-24w Ness

2250 125

* * *

2

increase in ill grn, bitl, & just starts
found to be chert w/ 55% found other pc
of glauc. sd, fish wht chl

SS-well rounded, med grn, sli glauc., well
sorted, GSFO, good odor, lite, fair
intergranular por, sli. cem., even brn stn
Sh-ll grn. soft

SS-well rounded, fine grn, wht-grn, very
friable, glauc., few pc yel. fish chl.

Wht fish chl, poorly sorted med grn sd, gry
lst, dense, fxlh, 2 clusters glauc. sd, poor
SO, pyrite, ool. yellow chl, well rounded lst

SS-fgrn, sli glauc. stn, GSFO, fair por.
some wht-clr fresh chert, fgrn sli glauc.,
even oil stn, SFO, partly friable, well
sorted

SS-wht. vfgn, more glauc., mostly well sorted,
crim dol. ls w/ scat. vug por i.p, no stn, some
fresh wht chl

SH-Foss: gry. black

ls-crm, dol ip, fxlh, no stn, scat. vug por.,
some wht fish chl, foss. few pc chalk, crm
fxlh dol w/ scat. vug por, no stn, dense

Dol-crm, f-mxlh, scat vug por i.p,
no stn, few pc soft why chalk,
dense. NS

Dol-AA

Dol-tan w/ some chalk, AA

Dol-crm-tan, AA, increase in wht
chert, no vis por.

Dol-crm, med. hd-hd, fxlh, some wht dol.
slightly suc., dense, increase in wht fresh
chl, foss ip, no stn, NS

Chl-wht, foss ip, dense, sucrosic ip,
still a lot of dol in samples

Chl-wht, fresh, dense, AA

Mississippi

4400 (-2040)

Mud Properties @
4426'

Vis :54
Wt :9.4

RTD 4470 (-2110)
LTD 4474 (-2114)

4346 (-1986)

DST #1