

GEOLOGISTS' REPORT

OPERATOR **MURFIN DRILLING CO INC.**
 LEASE **#1-11 KRISS**

ELEVATIONS
 KB **3232'**
 GL **3221'**

LOCATION **NE NW NE**
 SEC. **11** TWPSP **10S** RGE **34W**

COUNTY **THOMAS** STATE **KANSAS**
 FIELD **WILDCAT**

CONTRACTOR **MURFIN DRILLING CO** RIG NO. **2**
 COMMENCED **OCT. 14, 2011** COMPLETED **OCT. 24, 2011**

MUD DISPLACED **3195'** MUD TYPE **CHEMICAL**
 DRILLING TIME KEPT FROM **3800'** TO **4900'**

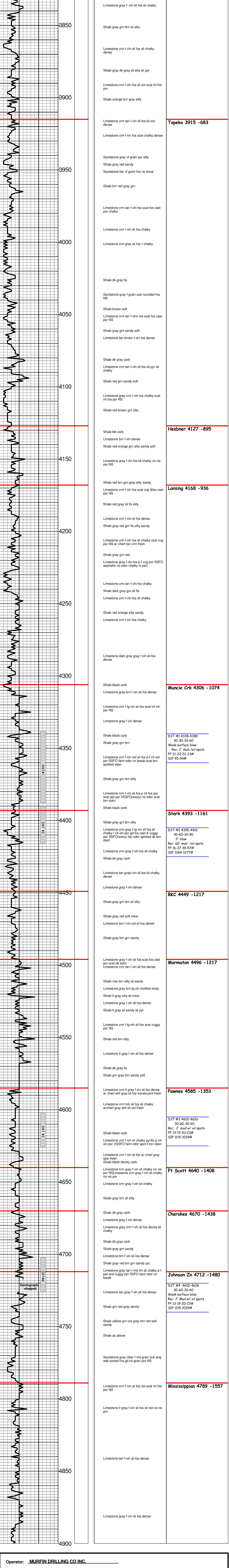
SAMPLES SAVED FROM **3800'** TO **4900'**
 SAMPLES EXAMINED FROM **3800'** TO **4900'**

GEOLOGICAL SUPERVISION FROM **3800'** TO **4900'**
 GEOLOGIST ON WELL **STEPHEN J MILLER**

ELECTRICAL SURVEYS:
 LOG TECH
 DUAL INDUCTION
 COMP NEU/DENS
 SONIC
 MICROLOG

FORMATION NAME	LOG TOP	DATUM	SAMPLE TOP	DATUM
AHMYDRITE	2750	+482	2746	+486
B/AHMYDRITE	2776	+456	2776	+456
TOPEKA	3907	-675	3915	-683
HEEBNER	4123	-891	4127	-895
LANSING	4161	-929	4168	-936
STARK SHALE	4386	-1154	4393	-1161
BASE KC	4439	-1207	4449	-1217
CHEROKEE	4664	-1432	4670	-1438
MISSISSIPPIAN	4778	-1546	4789	-1557
TOTAL DEPTH	4898	-1666	4900	-1668

REMARKS
 API 15-193-20815
 Drilling Fluids: MORGAN MUD
 Drill Stem Testing: TRILOBITE
 Gas Trailer: NONE
 Reserve Pit Chlorides:



Operator: **MURFIN DRILLING CO INC.**
 Lease: **#1-11 KRISS**
 Location: **NE NW NE** SEC. **11** TWPSP **10** RGE **34W**
 County: **THOMAS** State: **KANSAS**