



**TRILOBITE
TESTING, INC.**

DRILL STEM TEST REPORT

Murfin Drilling Co
250 N. Waterfront STE 300
Wichita KS
67202
ATTN: Steve Miller

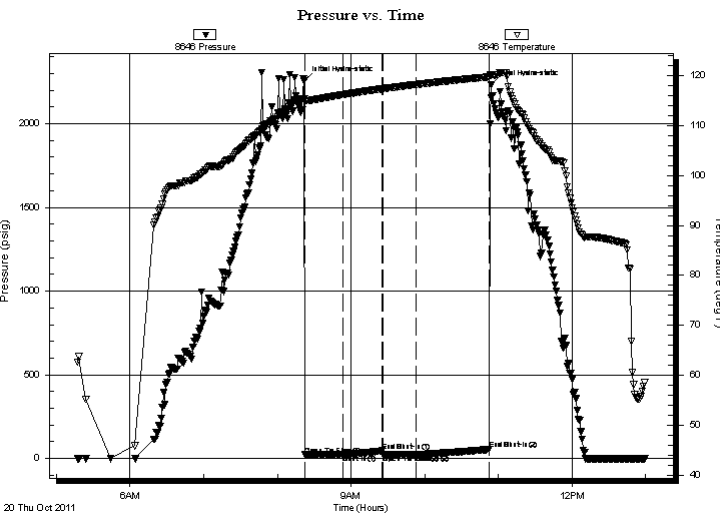
11-10s-34w Thomas C.
Kriss #1-11
Job Ticket: 43218 **DST#: 1**
Test Start: 2011.10.20 @ 05:17:15

GENERAL INFORMATION:

Formation: **I & J**
Deviated: No Whipstock: ft (KB) Test Type: Conventional Bottom Hole (Initial)
Time Tool Opened: 08:22:15 Tester: Mike Roberts
Time Test Ended: 12:59:45 Unit No: 48
Interval: 4338.00 ft (KB) To 4388.00 ft (KB) (TVD) Reference Elevations: 3232.00 ft (KB)
Total Depth: 4388.00 ft (KB) (TVD) 3221.00 ft (CF)
Hole Diameter: 7.88 inches Hole Condition: Poor KB to GR/CF: 11.00 ft

Serial #: 8646 Outside
Press @ Run Depth: 23.24 psig @ 4383.00 ft (KB) Capacity: 8000.00 psig
Start Date: 2011.10.20 End Date: 2011.10.20 Last Calib.: 2011.10.20
Start Time: 05:17:15 End Time: 12:59:45 Time On Btm: 2011.10.20 @ 08:22:00
Time Off Btm: 2011.10.20 @ 10:54:00

TEST COMMENT: IF:Weak surface blow
IS:No return blow
FF:No blow
FS:No return blow



PRESSURE SUMMARY

Time (Min.)	Pressure (psig)	Temp (deg F)	Annotation
0	2258.17	115.43	Initial Hydro-static
1	21.88	114.72	Open To Flow (1)
31	22.39	116.20	Shut-In(1)
64	45.56	117.40	End Shut-In(1)
64	22.12	117.41	Open To Flow (2)
91	23.24	118.26	Shut-In(2)
151	54.59	119.80	End Shut-In(2)
152	2231.76	120.03	Final Hydro-static

Recovery

Length (ft)	Description	Volume (bbl)
2.00	mud w ith oil spots	0.01

Gas Rates

Choke (inches)	Pressure (psig)	Gas Rate (Mcf/d)



**TRILOBITE
TESTING, INC.**

DRILL STEM TEST REPORT

FLUID SUMMARY

Murfin Drilling Co

11-10s-34w Thomas C.

250 N. Waterfront STE 300
Wichita KS
67202
ATTN: Steve Miller

Kriss #1-11

Job Ticket: 43218

DST#: 1

Test Start: 2011.10.20 @ 05:17:15

Mud and Cushion Information

Mud Type: Gel Chem

Cushion Type:

Oil API:

0 deg API

Mud Weight: 9.00 lb/gal

Cushion Length:

ft

Water Salinity:

0 ppm

Viscosity: 63.00 sec/qt

Cushion Volume:

bbbl

Water Loss: 7.20 in³

Gas Cushion Type:

Resistivity: 0.00 ohm.m

Gas Cushion Pressure:

psig

Salinity: 6900.00 ppm

Filter Cake: 1.00 inches

Recovery Information

Recovery Table

Length ft	Description	Volume bbl
2.00	mud w ith oil spots	0.010

Total Length: 2.00 ft Total Volume: 0.010 bbl

Num Fluid Samples: 0

Num Gas Bombs: 0

Serial #:

Laboratory Name:

Laboratory Location:

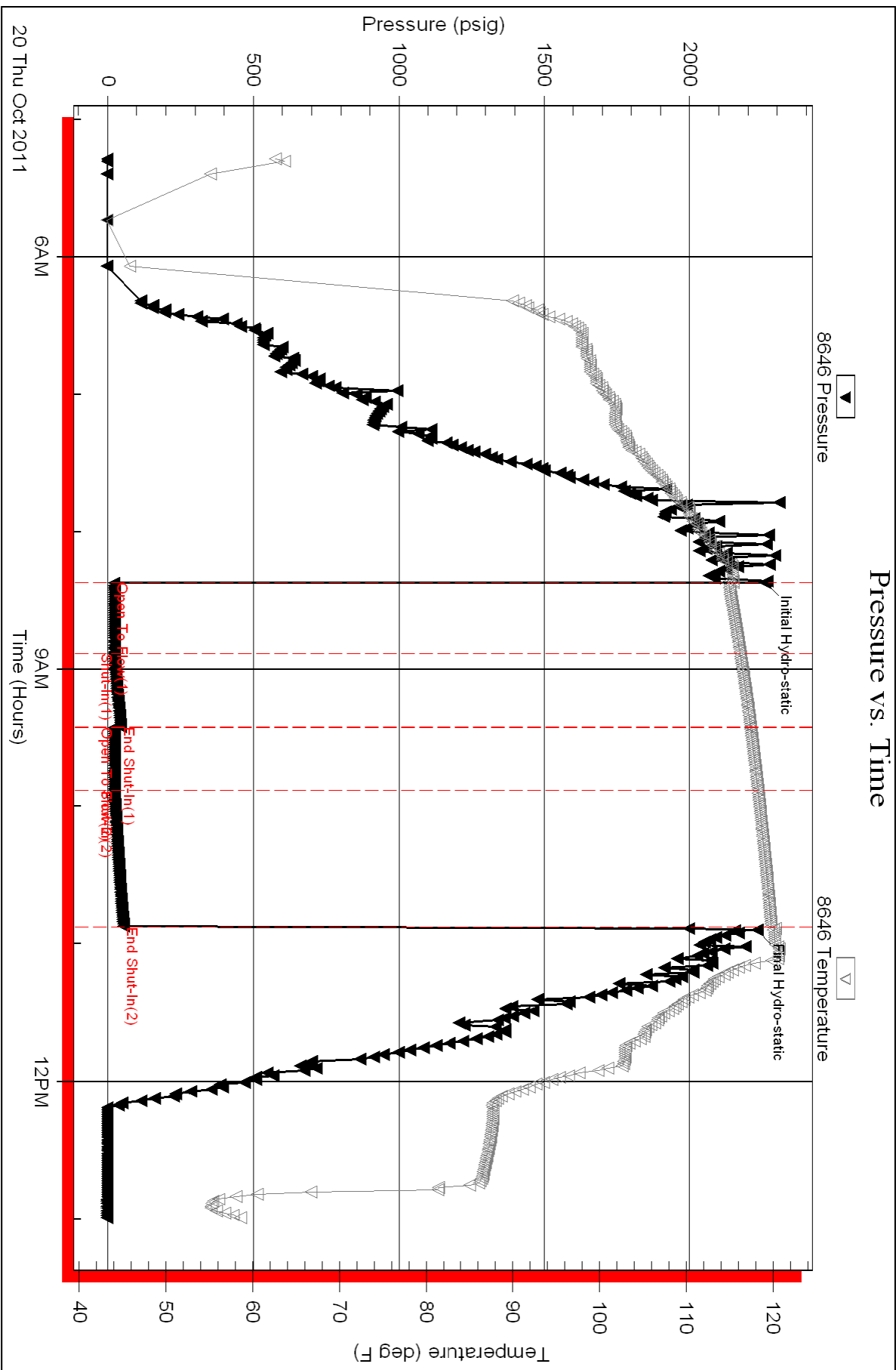
Recovery Comments:

Serial #: 8646

Outside Murfin Drilling Co

Kiss #1-11

DST Test Number: 1





TRILOBITE TESTING, INC.

DRILL STEM TEST REPORT

Murfin Drilling Co
 250 N. Waterfront STE 300
 Wichita KS
 67202
 ATTN: Steve Miller

11-10s-34w Thomas C.
Kriss #1-11
 Job Ticket: 43219 **DST#: 2**
 Test Start: 2011.10.20 @ 23:00:15

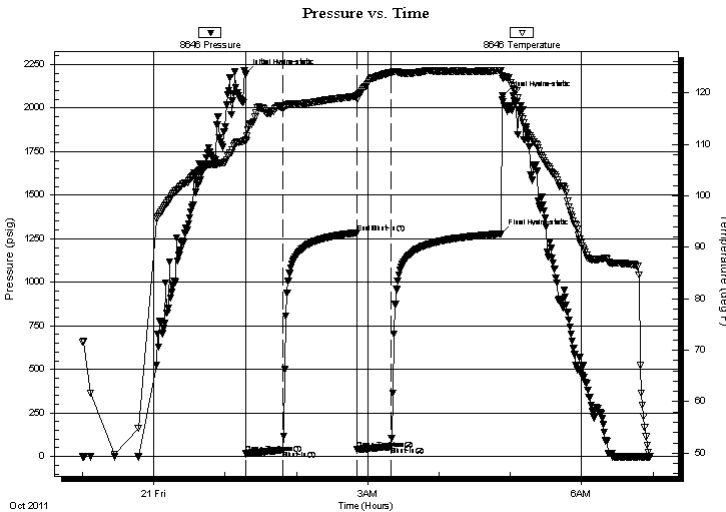
GENERAL INFORMATION:

Formation: **K**
 Deviated: No Whipstock: ft (KB)
 Time Tool Opened: 01:17:45
 Time Test Ended: 06:58:00
Interval: 4390.00 ft (KB) To 4416.00 ft (KB) (TVD)
 Total Depth: 4388.00 ft (KB) (TVD)
 Hole Diameter: 7.88 inches Hole Condition:
 Test Type: Conventional Bottom Hole (Reset)
 Tester: Mike Roberts
 Unit No: 48
 Reference Elevations: 3232.00 ft (KB)
 3221.00 ft (CF)
 KB to GR/CF: 11.00 ft

Serial #: 8646 Outside
 Press @ Run Depth: 37.21 psig @ 4411.00 ft (KB) Capacity: 8000.00 psig
 Start Date: 2011.10.20 End Date: 2011.10.21 Last Calib.: 2011.10.21
 Start Time: 23:00:15 End Time: 06:58:00 Time On Btm: 2011.10.21 @ 01:17:30
 Time Off Btm: 2011.10.21 @ 04:52:15

TEST COMMENT: IF: Built to 2" blow
 IS: No return blow
 FF: Built to 2" blow
 FS: No return blow

PRESSURE SUMMARY



Time (Min.)	Pressure (psig)	Temp (deg F)	Annotation
0	2196.20	110.91	Initial Hydro-static
1	16.02	110.67	Open To Flow (1)
31	37.21	117.01	Shut-In(1)
94	1284.17	119.37	End Shut-In(1)
94	39.33	118.74	Open To Flow (2)
122	57.02	123.92	Shut-In(2)
215	1277.93	124.30	Final Hydro-static
217	2069.99	122.74	Final Hydro-static

Recovery

Length (ft)	Description	Volume (bbl)
60.00	mud w ith oil spots 100% m	0.30

* Recovery from multiple tests

Gas Rates

Choke (inches)	Pressure (psig)	Gas Rate (Mcf/d)



**TRILOBITE
TESTING, INC.**

DRILL STEM TEST REPORT

FLUID SUMMARY

Murfin Drilling Co

11-10s-34w Thomas C.

250 N. Waterfront STE 300
Wichita KS
67202
ATTN: Steve Miller

Kriss #1-11

Job Ticket: 43219

DST#: 2

Test Start: 2011.10.20 @ 23:00:15

Mud and Cushion Information

Mud Type: Gel Chem	Cushion Type:	Oil API:	0 deg API
Mud Weight: 9.00 lb/gal	Cushion Length: ft	Water Salinity:	0 ppm
Viscosity: 59.00 sec/qt	Cushion Volume: bbl		
Water Loss: 7.60 in ³	Gas Cushion Type:		
Resistivity: 0.00 ohm.m	Gas Cushion Pressure: psig		
Salinity: 7900.00 ppm			
Filter Cake: 1.00 inches			

Recovery Information

Recovery Table

Length ft	Description	Volume bbl
60.00	mud w ith oil spots 100% m	0.295

Total Length: 60.00 ft Total Volume: 0.295 bbl

Num Fluid Samples: 0

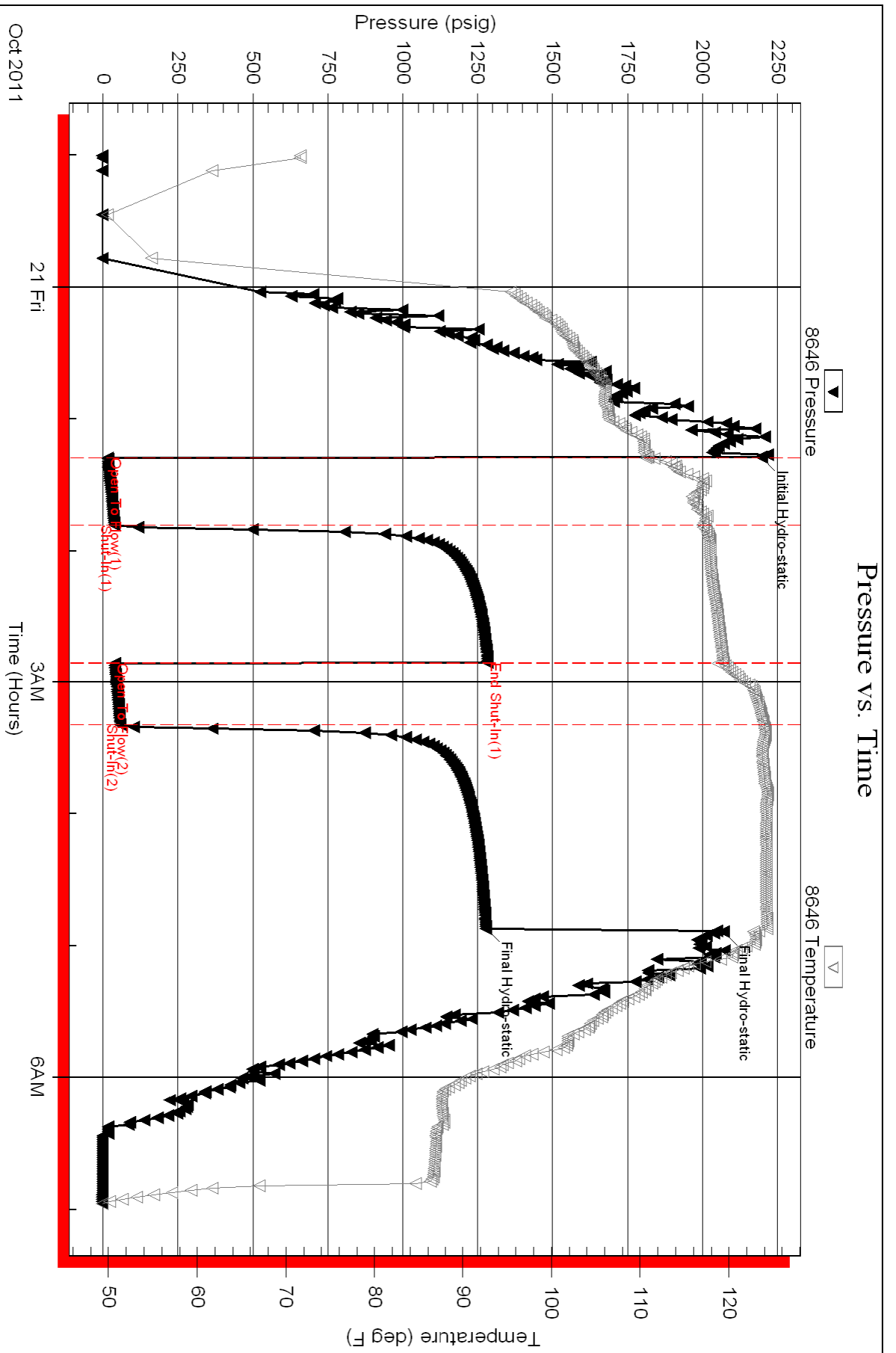
Num Gas Bombs: 0

Serial #:

Laboratory Name:

Laboratory Location:

Recovery Comments:





TRILOBITE TESTING, INC.

DRILL STEM TEST REPORT

Murfin Drilling Co
 250 N. Waterfront STE 300
 Wichita KS
 67202
 ATTN: Steve Miller

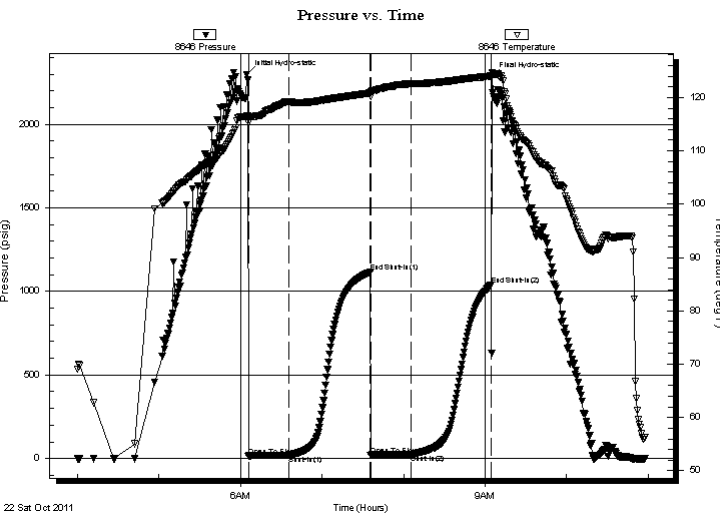
11-10s-34w Thomas C.
Kriss #1-11
 Job Ticket: 43220 **DST#: 3**
 Test Start: 2011.10.22 @ 04:00:15

GENERAL INFORMATION:

Formation: **Ft.Scott**
 Deviated: No Whipstock: ft (KB)
 Time Tool Opened: 06:05:45
 Time Test Ended: 10:57:30
 Interval: **4602.00 ft (KB) To 4626.00 ft (KB) (TVD)**
 Total Depth: 4626.00 ft (KB) (TVD)
 Hole Diameter: 7.88 inches Hole Condition: Poor
 Test Type: Conventional Bottom Hole (Reset)
 Tester: Mike Roberts
 Unit No: 48
 Reference Elevations: 3232.00 ft (KB)
 3221.00 ft (CF)
 KB to GR/CF: 11.00 ft

Serial #: 8646 Outside
 Press @ Run Depth: 23.97 psig @ 4621.00 ft (KB) Capacity: 8000.00 psig
 Start Date: 2011.10.22 End Date: 2011.10.22 Last Calib.: 2011.10.22
 Start Time: 04:00:15 End Time: 10:57:30 Time On Btm: 2011.10.22 @ 06:05:00
 Time Off Btm: 2011.10.22 @ 09:05:15

TEST COMMENT: IF: Built to weak surface blow
 IS: No return blow
 FF: No blow
 FS: No return blow



PRESSURE SUMMARY

Time (Min.)	Pressure (psig)	Temp (deg F)	Annotation
0	2301.61	116.63	Initial Hydro-static
1	13.85	115.25	Open To Flow (1)
31	19.03	119.20	Shut-In(1)
91	1115.01	120.86	End Shut-In(1)
91	20.66	120.29	Open To Flow (2)
121	23.97	122.58	Shut-In(2)
180	1039.37	124.02	End Shut-In(2)
181	2288.63	124.72	Final Hydro-static

Recovery

Length (ft)	Description	Volume (bbl)
2.00	mud with oil spots	0.01

* Recovery from multiple tests

Gas Rates

Choke (inches)	Pressure (psig)	Gas Rate (Mcf/d)



**TRILOBITE
TESTING, INC.**

DRILL STEM TEST REPORT

FLUID SUMMARY

Murfin Drilling Co
250 N. Waterfront STE 300
Wichita KS
67202
ATTN: Steve Miller

11-10s-34w Thomas C.
Kriss #1-11
Job Ticket: 43220 **DST#: 3**
Test Start: 2011.10.22 @ 04:00:15

Mud and Cushion Information

Mud Type: Gel Chem	Cushion Type:	Oil API:	0 deg API
Mud Weight: 9.00 lb/gal	Cushion Length: ft	Water Salinity:	0 ppm
Viscosity: 52.00 sec/qt	Cushion Volume: bbl		
Water Loss: 6.80 in ³	Gas Cushion Type:		
Resistivity: 0.00 ohm.m	Gas Cushion Pressure: psig		
Salinity: 6400.00 ppm			
Filter Cake: 1.00 inches			

Recovery Information

Recovery Table

Length ft	Description	Volume bbl
2.00	mud w ith oil spots	0.010

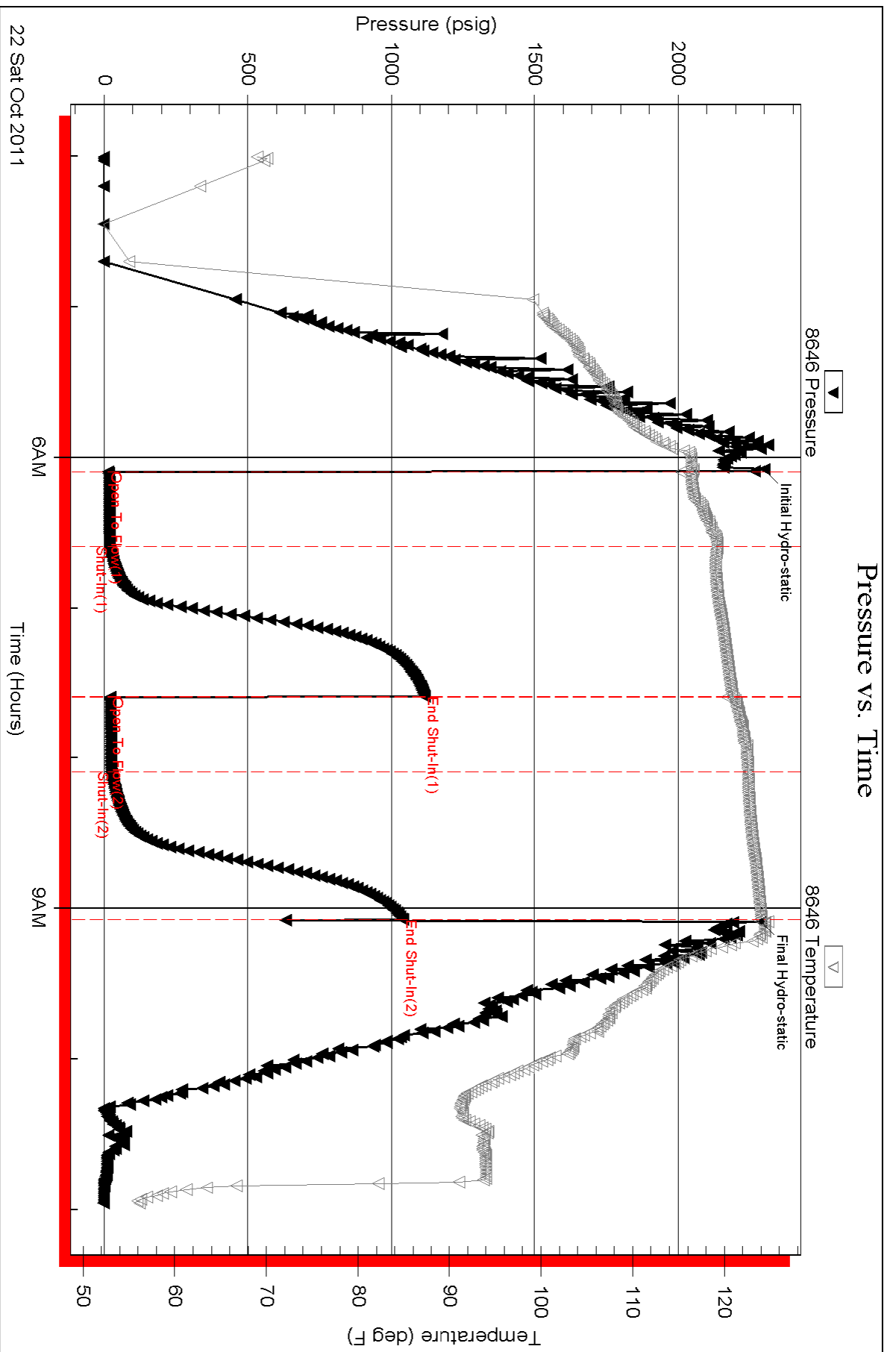
Total Length: 2.00 ft Total Volume: 0.010 bbl
Num Fluid Samples: 0 Num Gas Bombs: 0 Serial #:
Laboratory Name: Laboratory Location:
Recovery Comments:

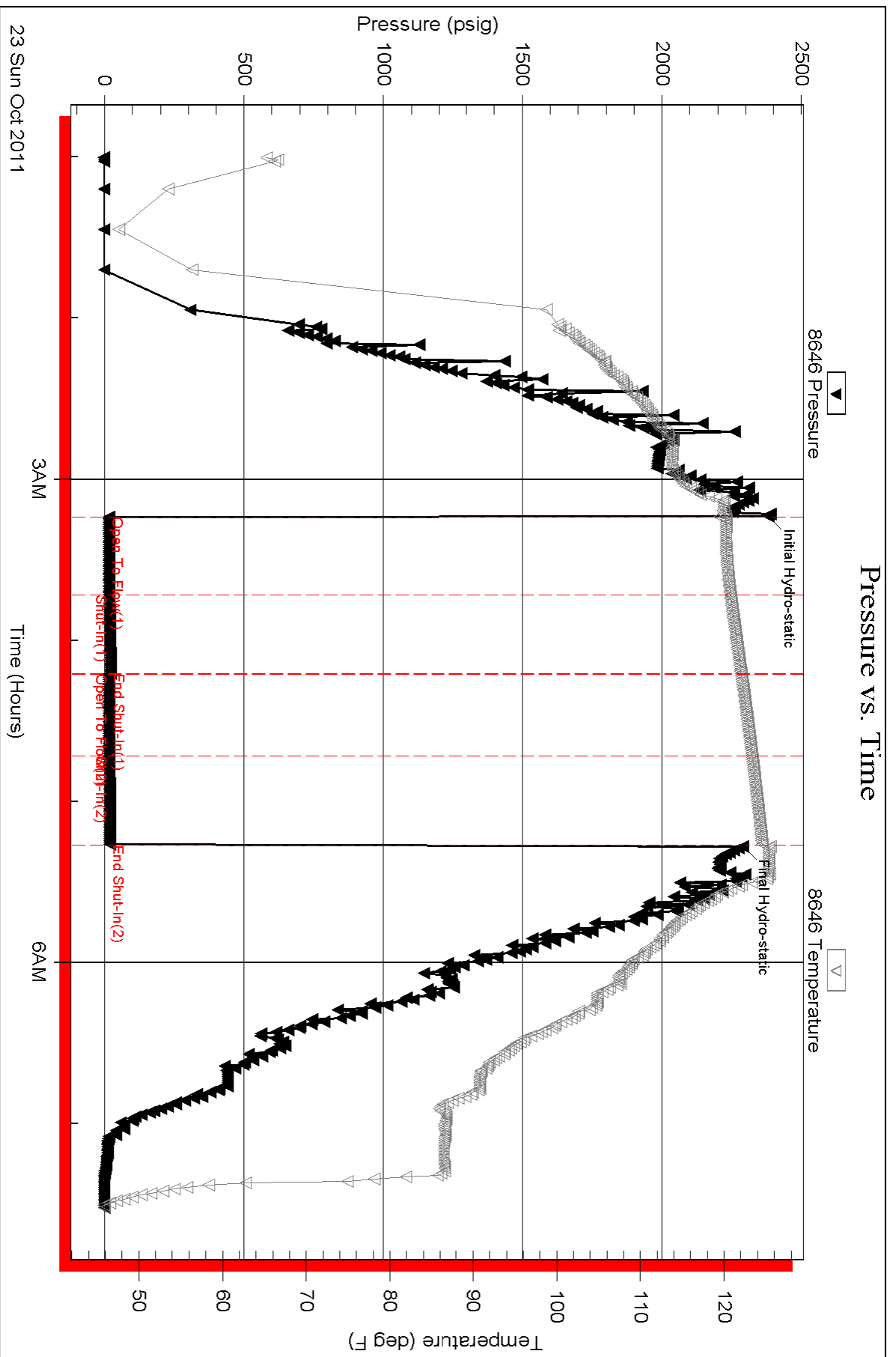
Serial #: 8646

Outside Murfin Drilling Co

Kiss #1-11

DST Test Number: 3





Serial #: 8358

Outside Murfin Drilling Co

Kiss #1-11

DST Test Number: 4

