



DRILL STEM TEST REPORT

Prepared For: **Noble Petroleum Inc.**

3101 North Rock Road Suite
125 Wichita Kansas 67226

ATTN: Bill

17-28s-4e-Butler

Haskins Jones #2

Start Date: 2011.10.09 @ 09:35:00

End Date: 2011.10.09 @ 18:24:30

Job Ticket #: 17224 DST #: 2

Superior Testers Enterprises LLC
PO Box 138 Great Bend KS 67530
1-800-792-6902

Printed: 2011.10.09 @ 21:55:47



DRILL STEM TEST REPORT

Noble Petroleum Inc.
 3101 North Rock Road Suite
 125 Wichita Kansas 67226
 ATTN: Bill

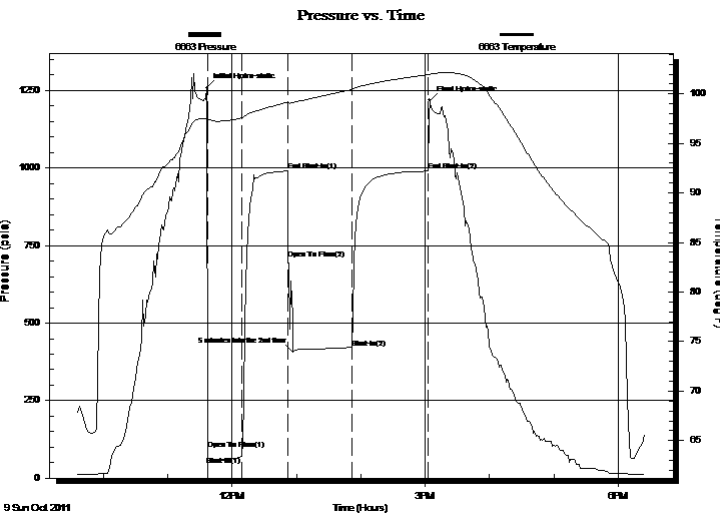
Haskins Jones #2
17-28s-4e-Butler
 Job Ticket: 17224 **DST#: 2**
 Test Start: 2011.10.09 @ 09:35:00

GENERAL INFORMATION:

Formation: **Arbuckle**
 Deviated: No Whipstock: ft (KB)
 Test Type: Conventional Bottom Hole (Initial)
 Time Tool Opened: 11:37:00 Tester: Dustin Ellis
 Time Test Ended: 18:24:30 Unit No: 3315-GB-280
 Interval: **2472.00 ft (KB) To 2488.00 ft (KB) (TVD)** Reference Elevations: 1271.00 ft (KB)
 Total Depth: 2488.00 ft (KB) (TVD) 1265.00 ft (CF)
 Hole Diameter: 7.88 inches Hole Condition: Fair KB to GR/CF: 6.00 ft

Serial #: 6663 Outside
 Press @ Run Depth: 419.71 psia @ 2485.00 ft (KB) Capacity: 5000.00 psia
 Start Date: 2011.10.09 End Date: 2011.10.09 Last Calib.: 2011.10.09
 Start Time: 09:36:00 End Time: 18:24:30 Time On Btm: 2011.10.09 @ 11:36:30
 Time Off Btm: 2011.10.09 @ 15:04:00

TEST COMMENT: 1st open 30 minutes Fair blow built to 3.5 inches in a 5 gallon bucket of water
 1st shut in 45 minutes No blow back
 2nd open 60 minutes Strong blow blew bottom of bucket in 1 minute
 2nd shut in 60 minutes No blow back



PRESSURE SUMMARY

Time (Min.)	Pressure (psia)	Temp (deg F)	Annotation
0	1258.51	97.51	Initial Hydro-static
1	92.46	96.79	Open To Flow (1)
32	69.73	97.56	Shut-In(1)
75	990.15	99.16	End Shut-In(1)
76	705.33	99.03	Open To Flow (2)
81	407.14	99.14	5 minutes into the 2nd flow
136	419.71	100.44	Shut-In(2)
206	990.22	101.92	End Shut-In(2)
208	1217.42	102.00	Final Hydro-static

Recovery

Length (ft)	Description	Volume (bbl)
360.00	Slightly Oil Cut Mud	3.05
0.00	5% Oil 95% Mud	0.00
180.00	Slightly Oil Cut Mud	2.52
0.00	10% Oil 90% Mud	0.00

Gas Rates

	Choke (inches)	Pressure (psia)	Gas Rate (Mcf/d)



DRILL STEM TEST REPORT

TOOL DIAGRAM

Noble Petroleum Inc.
 3101 North Rock Road Suite
 125 Wichita Kansas 67226
 ATTN: Bill

Haskins Jones #2
17-28s-4e-Butler
 Job Ticket: 17224 **DST#: 2**
 Test Start: 2011.10.09 @ 09:35:00

Tool Information

Drill Pipe:	Length: 2257.00 ft	Diameter: 3.80 inches	Volume: 31.66 bbl	Tool Weight: 2000.00 lb
Heavy Wt. Pipe:	Length: 0.00 ft	Diameter: 0.00 inches	Volume: 0.00 bbl	Weight set on Packer: 20000.00 lb
Drill Collar:	Length: 219.00 ft	Diameter: 2.25 inches	Volume: 1.08 bbl	Weight to Pull Loose: 41000.00 lb
			<u>Total Volume: 32.74 bbl</u>	Tool Chased 1.00 ft
Drill Pipe Above KB:	32.00 ft			String Weight: Initial 36000.00 lb
Depth to Top Packer:	2472.00 ft			Final 40000.00 lb
Depth to Bottom Packer:	ft			
Interval between Packers:	16.00 ft			
Tool Length:	44.00 ft			
Number of Packers:	2	Diameter: 6.25 inches		

Tool Comments:

Tool Description	Length (ft)	Serial No.	Position	Depth (ft)	Accum. Lengths
Shut-In Tool	5.00			2449.00	
Hydraulic Tool	5.00			2454.00	
Jars	6.00			2460.00	
Safety Joint	2.00			2462.00	
Packer	5.00			2467.00	28.00 Bottom Of Top Packer
Packer	5.00			2472.00	
Perforations	11.00			2483.00	
Recorder	1.00	6806	Inside	2484.00	
Recorder	1.00	6663	Outside	2485.00	
Bull Plug	3.00			2488.00	16.00 Bottom Packers & Anchor
Total Tool Length:	44.00				



DRILL STEM TEST REPORT

FLUID SUMMARY

Noble Petroleum Inc.
 3101 North Rock Road Suite
 125 Wichita Kansas 67226
 ATTN: Bill

Haskins Jones #2
17-28s-4e-Butler
 Job Ticket: 17224 **DST#: 2**
 Test Start: 2011.10.09 @ 09:35:00

Mud and Cushion Information

Mud Type: Gel Chem	Cushion Type:	Oil API:	deg API
Mud Weight: 9.00 lb/gal	Cushion Length: ft	Water Salinity:	ppm
Viscosity: 38.00 sec/qt	Cushion Volume: bbl		
Water Loss: 10.19 in ³	Gas Cushion Type:		
Resistivity: ohm.m	Gas Cushion Pressure: psia		
Salinity: 1200.00 ppm			
Filter Cake: 1.00 inches			

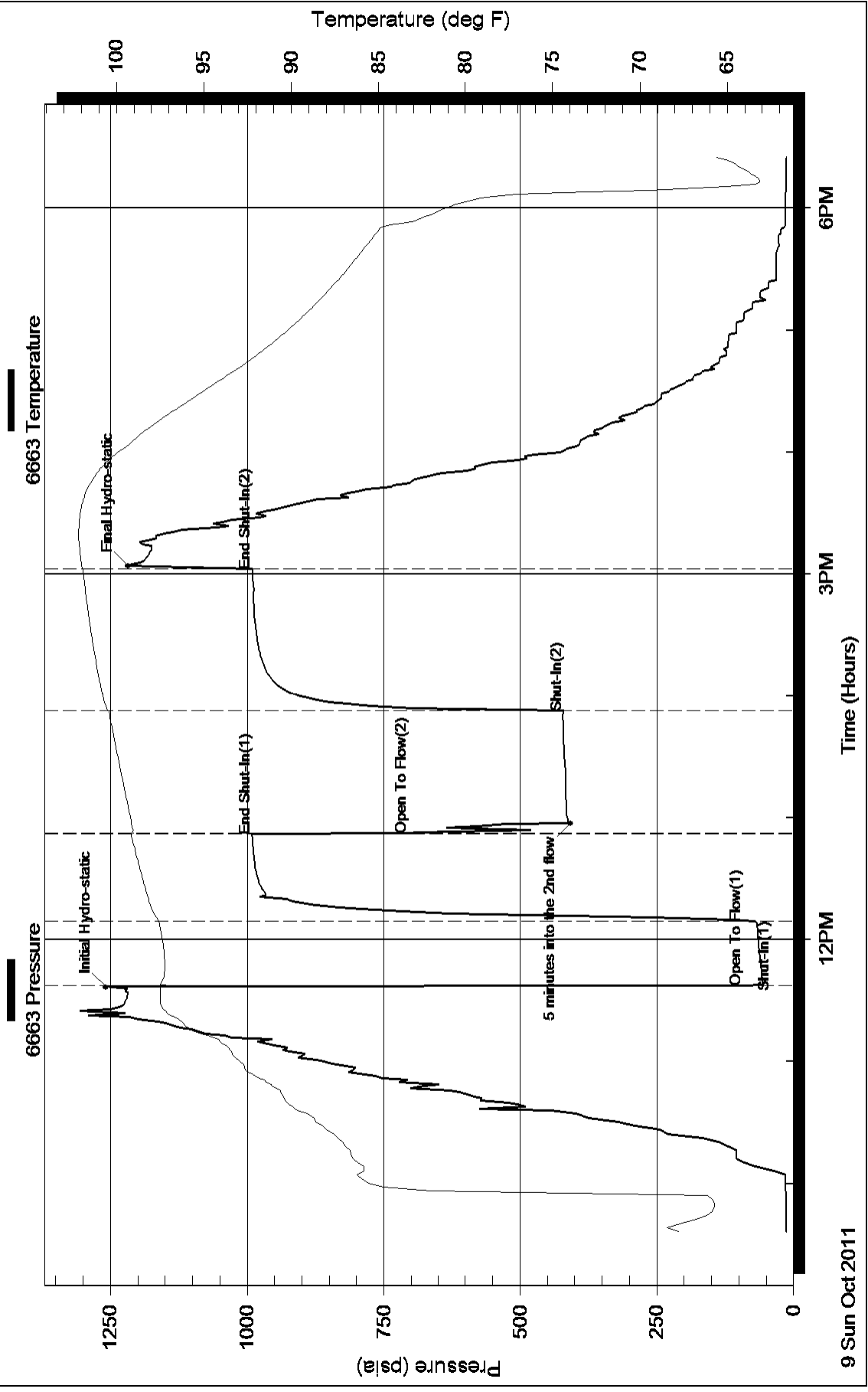
Recovery Information

Recovery Table

Length ft	Description	Volume bbl
360.00	Slightly Oil Cut Mud	3.055
0.00	5% Oil 95% Mud	0.000
180.00	Slightly Oil Cut Mud	2.525
0.00	10% Oil 90% Mud	0.000

Total Length: 540.00 ft Total Volume: 5.580 bbl
 Num Fluid Samples: 0 Num Gas Bombs: 0 Serial #:
 Laboratory Name: Laboratory Location:
 Recovery Comments:

Pressure vs. Time



Pressure vs. Time

