

ROCK TYPES

	Anhy		Congl		Mrlst		Ss
	Bent		Dol		Salt		Till
	Brec		Gyp		Shale		sdy sh
	Cht		Igne		Shcol		calc sh
	Clyst		Lmst		Shgy		shale
	Coal		Meta		Sltst		carb sh

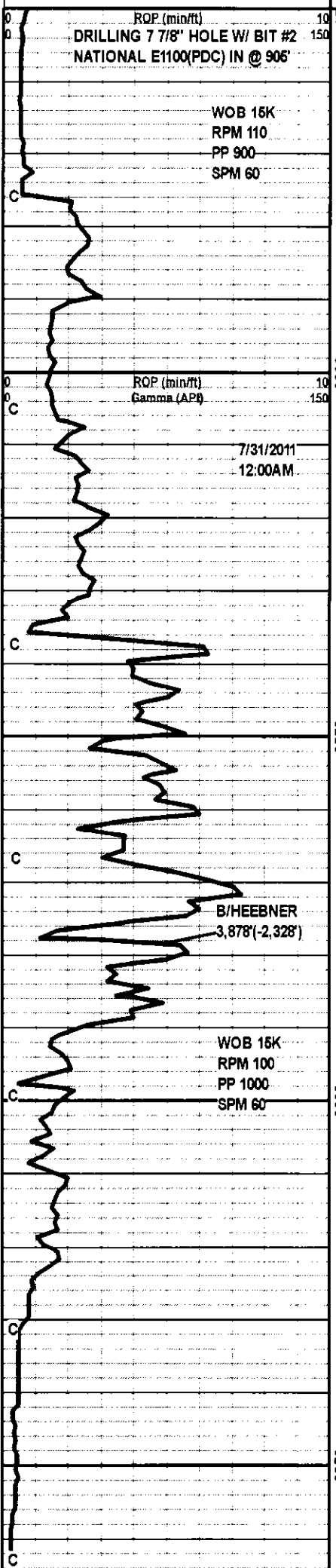
ACCESSORIES

MINERAL		Minxl		Crin		Gyp	
	Anhy		Nodule		Echin		Ls
	Arggrn		Phos		Fish		Mrst
	Arg		Pyr		Foram		Sltstrg
	Bent		Salt		Fossil		Ssstrg
	Bit		Sandy		Gastro		
	Brecfrag		Silt		Oolite	TEXTURE	
	Calc		Sil		Ostra		Boundst
	Carb		Sulphur		Pelec		Chalky
	Chtdk		Tuff		Pellet		Cryxln
	Chtlt				Pisolite		Earthy
	Dol	FOSSIL			Plant		Finexln
	Feldspar		Algae		Strom		Grainst
	Ferrpel		Amph				Lithogr
	Ferr		Belm	STRINGER			Microxln
	Glau		Bioclst		Anhy		Mudst
	Gyp		Brach		Arg		Packst
	Hvymin		Bryozoa		Bent		Wackest
	Kaol		Cephal		Coal		
	Marl		Coral		Dol		

OTHER SYMBOLS

POROSITY TYPE		Well		Angular	INTERVALS		Core
	Earthy		Moderate	OIL SHOWS			Dst
	Fenest		Poor		Even		
	Fracture				Spotted	EVENTS	
	Inter	ROUNDING			Ques		Rft
	Moldic		Rounded		Dead		Sidewall
	Organic		Subrnd				
	Pinpoint		Subang				
	Vuggy						

Curve Track 1		Depth	% Lithology	Geological Descriptions	TG, C1-C5	
ROP (min/ft)	_____				TG (units)	_____
Gamma (API)	-----			C1 (units)	_____	
				C2 (units)	_____	
				C3 (units)	_____	
				C4 (units)	_____	
				C5 (units)	_____	



ROP (min/ft)
 DRILLING 7 7/8" HOLE W/ BIT #2
 NATIONAL E1100(PDC) IN @ 905'

WOB 15K
 RPM 110
 PP 900
 SPM 60

ROP (min/ft)
 Gamma (AP)

7/31/2011
 12:00AM

B/HIEBNER
 3,878'(-2,328')

WOB 15K
 RPM 100
 PP 1000
 SPM 60

BEGAN ONE MAN MUDLOGGING @
 3,760' ON 7/30/2011 @ 2:48PM

DEVIATION @ 3,810' = .25°

SH: LT GY-GY-DK GY-GRN, V/FN-FN
 TEXT, GRTY, VISFT-SFT, SNDY,
 GLAU'C, FISS, FR PYR THROUT

SH: AAB

SH: LT GY-GY-DK GY, V/FN TEXT, MD
 SFT-FM, LMY I.P., FISS, PYR'C, MICA

SH: GY-DK GY-BRN-BLK, V/FN TEXT,
 MICA, SLI LMY, CALC, CARB

LS: WHT-OFF WT-TN-GY, V/FN
 MICRO-XLN, SM P.PPOR, SLI SHLY,
 FOSS, ARG, BRT WHTSH YEL FLU,
 NO VIS STN, CUT, OR ODOR

SH: LT GY-GY-DK GY, FN TEXT, GRTY,
 SNDY I.P., V/PYR'C, FISS, MICA

SS: WT-OFF WT-LT GY-TN, FN-MD
 GRN, SUBRND-RND, V/FRI, UNIF,
 CONS, SIL CEM, TRNS, V/GD XLN
 POR., SLI SHLY, MICA, SM GLAU'C
 SPKS, NO VIS FLU, STN, CUT, OR

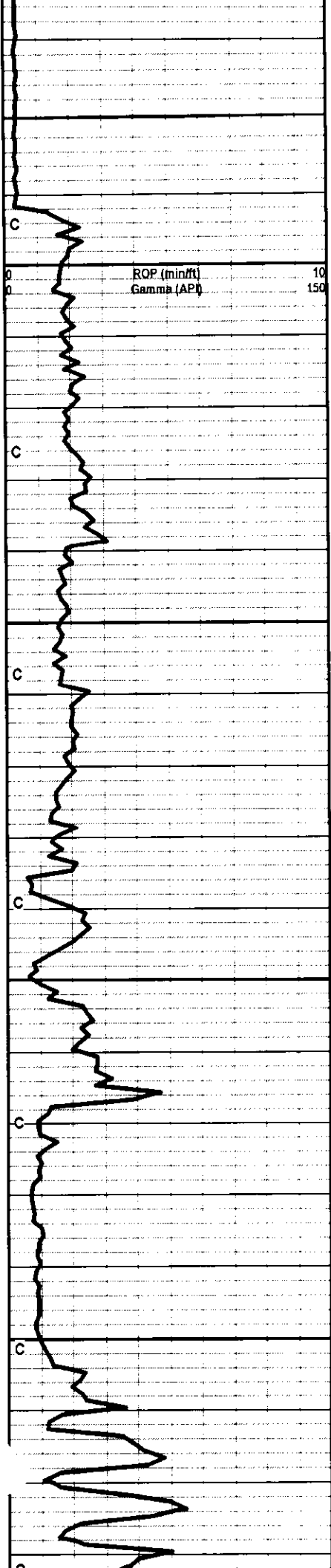
TG. C1-C5
 SAT 8 5/8" SURF CASING @ 905'

MD CK @ 3,607'
 WT 9.0
 V 49
 PV 12
 YP 13
 GEL 11/18
 WL 28.2
 CK 2
 SOLS 5.0
 PH 9.5
 CHL 8900
 CA 120
 LCM 3#

REPAIR FLANGE
 DWN 12 HRS @ 3810'

SHALE GAS

MD CK @ 3,874'
 WT 9.3
 V 62
 PV 20
 YP 14
 GEL 10/19
 WL 14.0
 CK 2
 SOLS
 PH 9.5
 CHL 9900
 CA 140
 LCM 8#



ROP (min/ft)
Gamma (API)

10
150

4000

4050

4100

4150

ODOR

SH: LT GY-GY-DK GY, V/FN-FN TEXT,
V/SFT-SFT, PLTY, V/PYR'C, MICA
THROUT

TG. C1-C5

500

SH: AAB

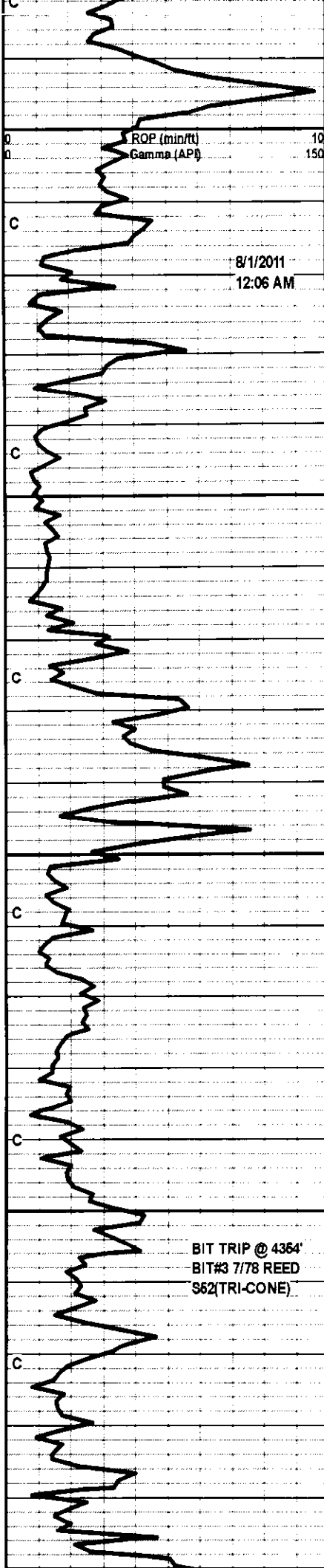
LS: OFF WT-TN-DK BRN, INTER-XLN,
SUC, SLI BRTL, GD INTER-XLN POR
W/ SM OOL'C, V/MOTT, ABT YEL FLU,
SM STNING, AND V/SLW STRM CUT

271u SHOW

LS: AAB

LS: WT-OFF WT-TN-GY, V/FN
MICRO-XLN, DNS, SHLY, V/FOSS,
ARG, DUL WTSH YEL FLU, NO VIS
STN, CUT, OR ODOR

LS: AAB



ROP (min/ft)
Gamma (API)

8/1/2011
12:06 AM

BIT TRIP @ 4364'
BIT#3 7/78 REED
S62(TRI-CONE)

4200
4250
4300
4350
4400

LS: OFF WT-TN-BRN, MICRO-XLN, SLI
SUC, SLI DNS, SM P.PPOR, ARG,
CALC THROUT, FOSS, SM YEL FLU,
NO VIS STN, CUT, OR ODOR

LS: AAB

LS: WT-OFF WT-TN, V/FN
MICRO-XLN, HD DNS, TR P.PPOR,
ARG, V/FOSS, CALC I.P., NO VIS
FLU, STN, OR ODOR

DEVIATION @ 4301'=1°

LS: OFF WT-TN-BRN, MICRO-XLN W/
SM INTER-XLN, GD P.PPOR, ARG, SM
DUL YEL FLU, NO VIS STN, CUT, OR
ODOR

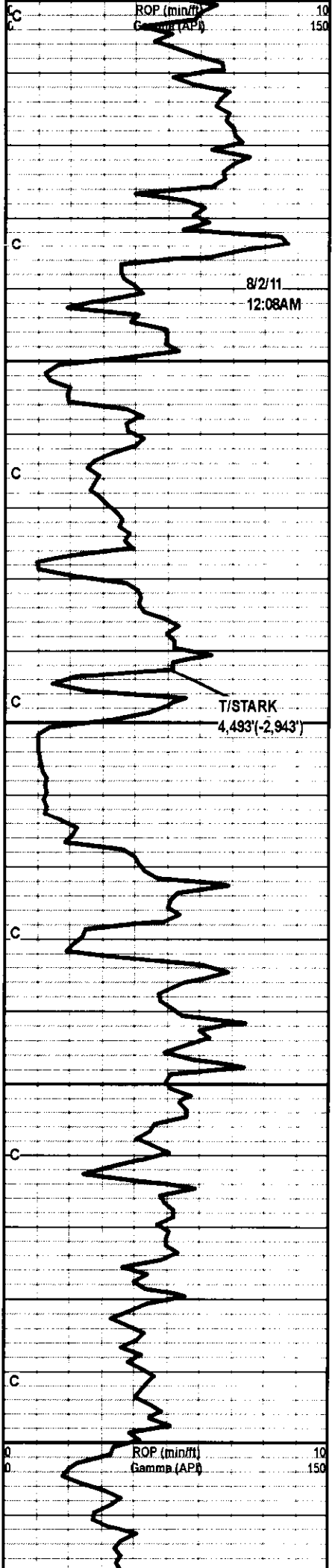
DEVIATION @ 4364'=.76°

LS: OFF WT-TN-BRN, MICRO-XLN, SLI
DNS, SM GD P.PPOR, SLI ARG, SLI
FOSS, DUL WHTSH YEL FLU, NO VIS
STN, CUT, OR ODOR

TG, G1-C5

SUCTION HOSE
CAME OFF
AGITATOR LOST
60' OF GAS
READINGS

MD CK @ 4,364'
WT 9.2
V 53
PV 17
YP 13
GEL 8/15
WL 11.6
CK 2
SOLS 5.7
PH 9.6
CHL 8800
CA 120
LCM 6#



LS: TN-BRN-DK BRN, V/FN
MICRO-XLN, DNS, TR P.PPOR,
V/ARG, CALC, SLI SHLY, ABT YEL
FLU, NO VIS STN, CUT, OR ODOR

LS: AAB W/ ABT SH: LT GY-GY-DK
GY, MD FM-HD, V/LMY, MICA, SLI
PYR'C

LS: OFF WT-TN-BRN, V/FN
MICRO-XLN, V/DNS, SLI SHLY, ARG,
CALC, SLI FOSS, SM BRT YEL FLU,
NO VIS STN, CUT, OR ODOR

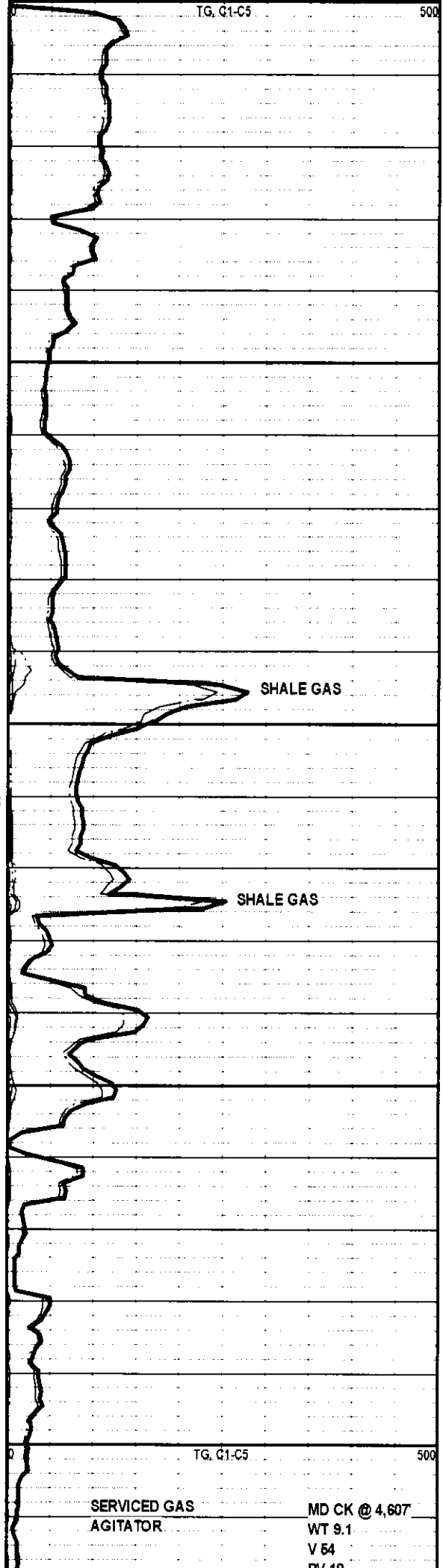
SH: GY-DK GY-BRN-BLK, V/FN WXY
TEXT, MD SFT-FM, V/FISS, PYR'C,
MICA, CALC, CARB

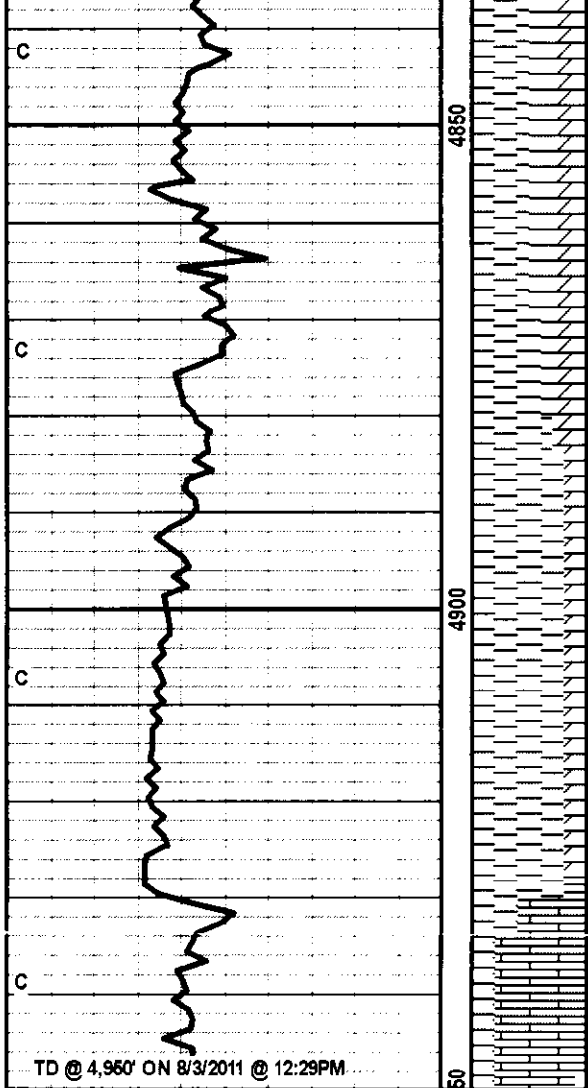
LS: TN-BRN-DK BRN, V/FN
MICRO-XLN, SLI SUC, SM P.PPOR,
SLI SHLY, ARG, DUL YEL FLU, NO VIS
STN, CUT, OR ODOR

SH: GY-DK GY-BRN-BLK, V/FN WXY
TEXT, CALC, CARB

LS: OFF WT-TN-GY-BRN, V/FN
MICRO-XLN, HD DNS, SHLY I.P., ARG,
CALC, FOSS, SM BRT YEL FLU, NO
VIS STN, CUT, OR ODOR

LS: AAB W/ ABT SH-LT
GY-GY-GRN-DK GY, V/FN TEXT, HD,
LMY I.P., GLAU'C, SLI PYR'C, FISS,
PLTY



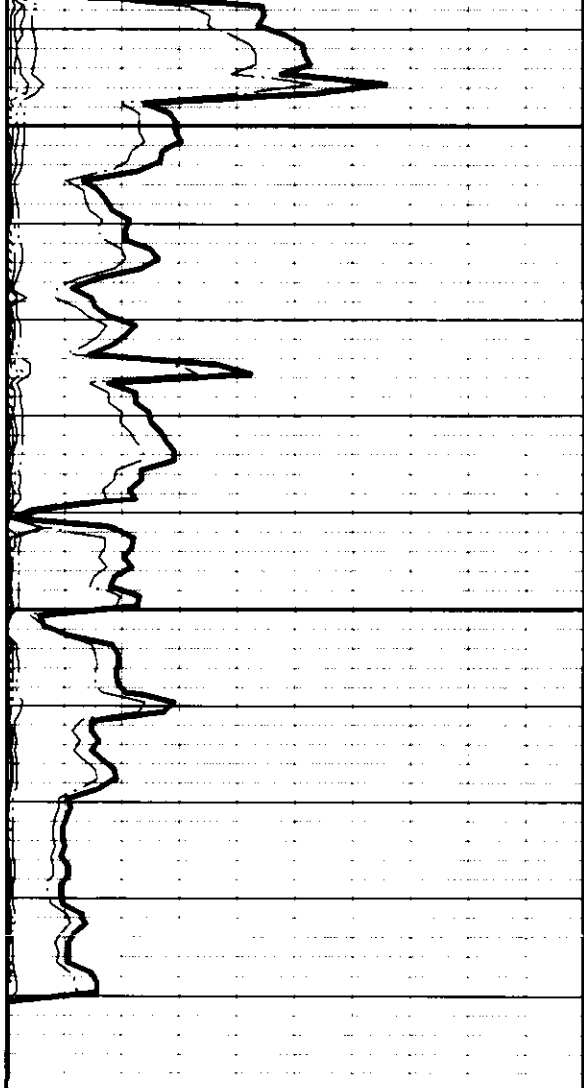


DOLO: AAB

SH: LT GY-GY-GRN, FN TEXT, MD
SFT-FM, SLI DOLO'C, GLAU'C, PYR
I.B., MICA, SLI FISS

SH: AAB

SHT TRP TO 4340', CIRC 1 3/4, DROP
SURVEY, TOH FOR ELOGS



TD @ 4,960' ON 8/3/2011 @ 12:29PM

