

GEOLOGIST'S REPORT

DRILLING TIME AND SAMPLE LOG

BACH OIL PRODUCTION

WELL: HANKE #1

LOC.: 1930' FNL & 1650' FEL
SEC. 22-3-19W
PHILLIPS COUNTY, KANSAS
API: 15-147-20650-00-00

ELEVATION

KB: 2069
 GL: 2064
 LOG MEASURED
 FROM: KB

SURFACE CASING

20# 8 5/8"
 Casing set @ 224
 w/150 SX

PRODUCTION CASING

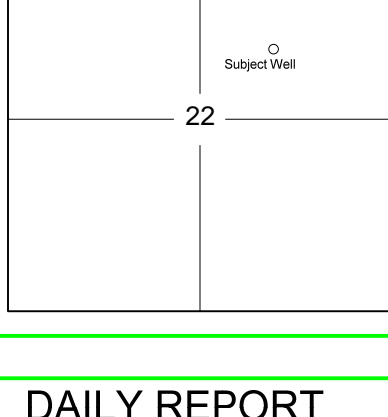
5 1/2"
 Casing set @ 3493'
 w/550 SX

WELL LOG SURVEYS

RAG

ELECTRIC LOG TOPS

FORMATION	DEPTH	DATUM	POS.
Stone Corral	1607	+462	+5
Base Stone Corral	1628	+441	+6
Topeka	2996	-928	+6
Heebner	3195	-1126	+6
Toronto	3220	-1151	+6
Lansing	3240	-1171	+6
Base Kansas City	3458	-1389	+7



REFERENCE WELL:

Viking Resources
 #2 Boethin
 SW NW SE
 22-3-19W

DAILY REPORT

@7:00 A.M.

09-09-11 MIRU
 09-10-11 SPUD
 09-11-11 1215'
 09-12-11 2570'
 09-13-11 3240'
 09-14-11 3498'

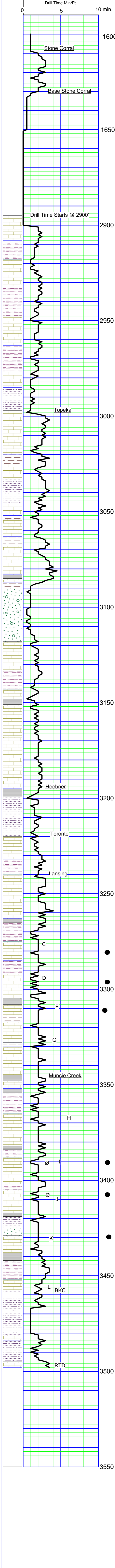
REMARKS AND RECOMMENDATIONS

Production casing was run to further test this well.

Respectfully submitted,

Robert J. Petersen

Robert J. Petersen
 Sept. 15, 2011



SAMPLE DESCRIPTION

- LS: Gray/tan, fine crystalline, foss, chalky + SH; Gray (2910)
- LS: Gray/cream, fine crystalline, foss, cherty + SH; gray (3920)
- LS: Cream, fine crystalline, foss + SH; Maroon/gray (2930)
- LS: Gray, fine crystalline to dense + SH; Gray + SS; Gray, fine grained, calc (2940)
- LS: Gray/tan, dense, blocky, foss (2950)
- LS: Gray, fine crystalline + SH; Maroo/gray + SS; Gray, very fine grained, calc (2960)
- LS: Gray, dense + SH; Gray (2970)
- +LS: Cream, fine crystalline, foss, chalky (2980)
- SS: Gray, fine grained, angular, friable, micaceous (2990)
- SS: White/gray, fine grained, angular, friable, mic. (3010)
- LS: Gray, dense, foss (trace 3010 increase 3020)
- LS: Cream/gray, fine crystalline, foss, trace stain (3030)
- LS: Tan/brown, fine crystalline to dense, foss, trace stain + SH; Dark gray (3040)
- LS: Cream, fine crystalline, foss, chalky, cherty (3050)
- SH: Gray, silty (3060)
- LS: Gray, fine crystalline to dense, foss, mottled (3060)
- SH: Black (3070)
- LS: Cream, fine crystalline, foss, sl dolomitic (3070)
- LS: Cream, fine crystalline, chalky, cherty, sl dolo + SH; Dark gray (3080)
- LS: Cream/lt gray, fine crystalline, foss, dolo, cherty + SH; Maroon (3090-3100)
- SH: Black(3110)
- SH: Red/gray (3110)
- SS: Lt gray, very fine grained, angular + LS; Cream/tan fine crystalline, chalky, trace stain + SH; Maroon (3120)
- SS: Gray, fine grained, angular + LS: Lt gray/cream, fine crystalline todensew/trace stain + SH; Red (3130)
- LS: Cream, fine crystalline, sl foss, dolo + SH; Dark gray (3150)
- LS: Cream/lt gray, fine crystalline, dolo + LS; Tan, fine crystalline, foss, subgranular + SH; Gray (60)
- SH: Black (70)
- SH: Maroon (70)
- LS: Lt gray/cream, fine crystalline to dense, dolo (70)
- trace SH; Maroon/gray (80)
- LS: Gray/tan, fine crystalline, foss, sl dolo + SH; dark gray (90)
- LS: Cream/lt gray, fine crystalline to dense, sl foss, chalky (3200)
- LS: Cream/tan, fine crystalline, foss, trace stain, poor vug por (3200/30")
- SH: Black (3200/30" -3210)
- LS: Cream/gray, fine crystalline to dense, foss, hard, sl dolo(20)
- SH: Red/gray, silty (30)
- LS: Cream/tan, fine crystalline, foss-granular in part, tr intergran por, sl dolo, nso (40)
- LS: Cream/lt gray, fine crystalline, foss, chalky, poor vug por (50)
- SH: Red/gray (50)
- LS: Cream, fine crystalline, foss, subgranular, sl chalky, trace stain on dry (60)
- LS: Cream, fine crystalline, foss, chalky, sl dolo (70)
- LS: Cream/lt gray, fine crystalline to dense (80)
- SH: Black (80)
- SH: Red/gray (80)
- LS: Tan, fine crystalline, foss w/poor fossilcast por, vssfo, abundant chert-tan/gray, blocky, full sat on dry (90)
- brecciated, sl dolo chert, increase sfo, faint odor (3300)
- SH: Maroon/gray (3300)
- LS: Cream, fine crystalline, foss, subgranular, cherty, fair sat, sfo, faint odor (3305-3310)
- LS: Cream, fine crystalline, foss, subgranular w/chert inclusions, dolomitic, w/intergran por, full sat on dry (90)
- SH: Black (3320)
- SH: Black (3320)
- LS: Cream/lt gray, fine crystalline, oolitic-granular w/trace fossil-cast por, sso, faint odor (30)
- LS: Cream/lt gray, fine crystalline, granular w/intergran por, fossilcast por, sso, faint odor (40)
- LS: Cream, ool/foss-in part, granular w/intergran/fossilcast por, sfo, light sat, faint odor (50)
- LS: Cream, fine crystalline, foss, chalky + SH; Black/red(60)
- LS: Lt gray, fine crystalline to dense, sl foss (70)
- SH: Black (trace 70 increase 80)
- SH: Red/gray, silty-sandy (80)
- LS: Gray/cream, fine crystalline, foss, cherty, mottled, chalky, sl pyritic + trace LS; Tan, fine crystalline, foss, sl dolo (90)
- LS: Cream/gray, fine crystalline, foss, cherty-sharp (3400)
- SH: Black (3400)
- SH: Red/gray (3400)
- LS: Cream, fine crystalline, foss-gran w/poor intergran por, lt stain, sfo (tr 3400 in crease 30")
- LS: Cream, fine crystalline to dense, w/fair to good vug por/fair fossilcast por, sat, sfo, fair odor, dark sat on dry (3410)
- SH: Dark gray (3410)
- LS: Cream/white, fine crystalline, foss w/poor fossilcast por, lt stain, faint odor (3415)
- LS: Cream/lt gray, dense, foss w/trace vug por, trace stain (3420)
- LS: Cream, fine crystalline to dense, foss, w/ppt por, patchy stain, sfo, faint odor (30)
- SH: Black (3430)
- SH: maroon (40)
- trace SD cluster-clear, coarse, ang w/sfo ?(50)
- LS: Lt gray/cream, fine crystalline, sl foss, sl dolo, trace inter-gran por, sso, odor (50)
- LS: Gray/cream, fine crystalline, foss, chalky (60)
- SH: Black (60)
- SH: Gray/ Maroon, silty (70)
- LS: Cream/gray, fine crystalline, foss, chalky (80)
- SH: Maroon/gray, silty + SS; Red, vfg, silty (90)
- LS: Cream, fine crystalline to dense, ool-hard, granular (90)
- SH: Red/green, silty, sandy + LS; Lt gray, dense, ool-gran, hard (3498)