

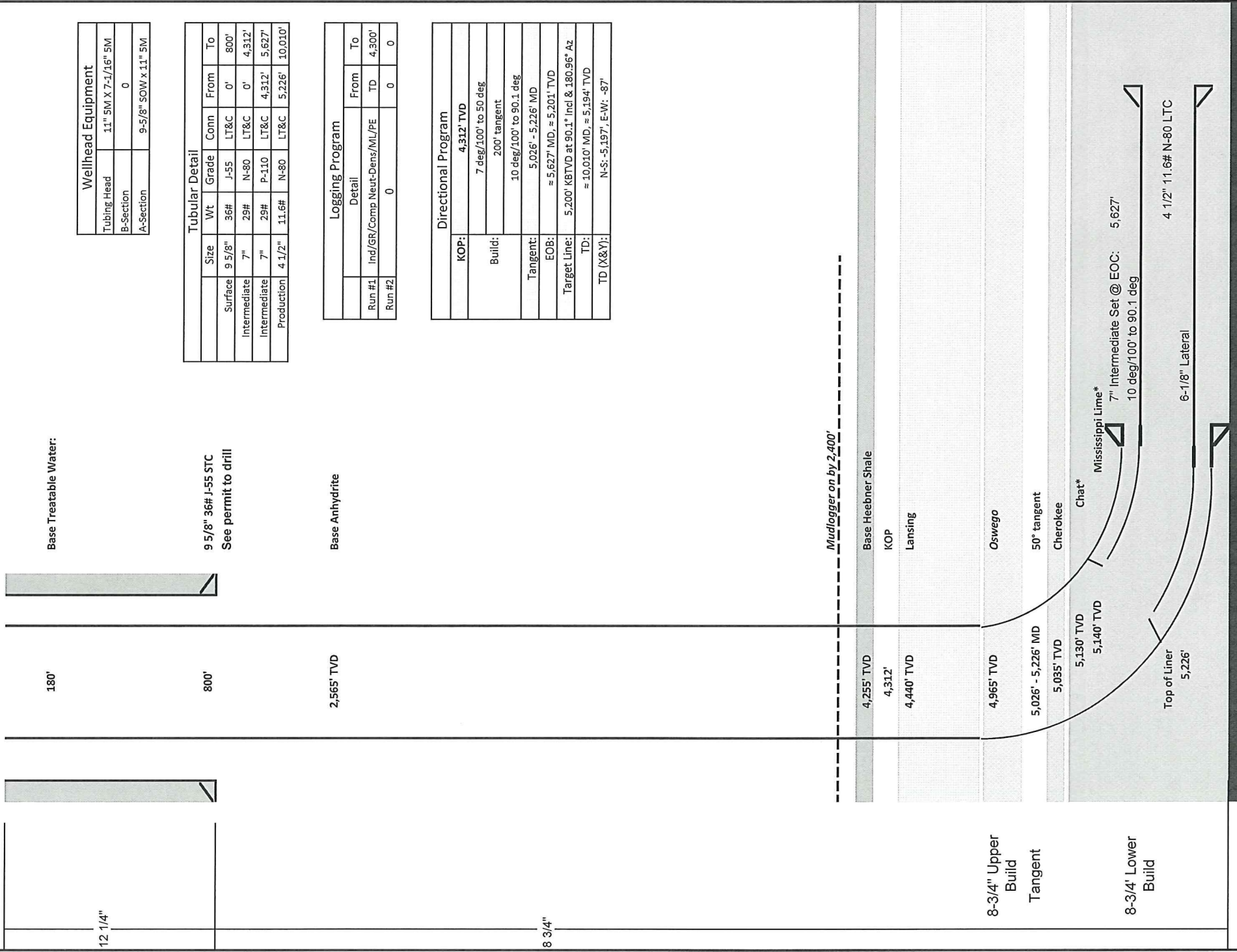


Lariat Rig 38

281-436-6237

Well: Mariah 1-36H
 Field: Kansas – Six Moons
 County: Comanche County, Kansas
 Surface: 200' FSL & 660' FEL of Sec. 25-31S-20W
 PBHL: 200' FSL & 660' FEL of Sec. 36-31S-20W
 GL: 2,069' KB: 2,088.5'

Engineer: Marc Harvey
 Manager: Roger Wilson
 Geology: Kathy Gentry
 Production: Chad Hunt
 Land: Shaun Lambert
 AFE #: DC11478



Wellhead Equipment	
Tubing Head	11" 5M X 7-3/16" 5M
B-Section	0
A-Section	9-5/8" SOW x 1.1" 5M

Tubular Detail						
	Size	Wt	Grade	Conn	From	To
Surface	9 5/8"	36#	J-55	LT&C	0'	800'
Intermediate	7"	29#	N-80	LT&C	0'	4,312'
Intermediate	7"	29#	P-110	LT&C	4,312'	5,627'
Production	4 1/2"	11.6#	N-80	LT&C	5,226'	10,010'

Logging Program			
	Detail	From	To
Run #1	Ind/GR/Comp Neut-Dens/ML/PE	TD	4,300'
Run #2		0	0

Directional Program	
KOP:	4,312' TVD
Build:	7 deg/100' to 50 deg 200' tangent
Tangent:	10 deg/100' to 90.1 deg 5,026' - 5,226' MD
EOB:	≈ 5,627' MD, ≈ 5,201' TVD
Target Line:	5,200' KBTVD at 90.1° Incl & 180.96° Az
TD:	≈ 10,010' MD, ≈ 5,194' TVD
TD (X&Y):	N-S: -5,197'; E-W: -87'

Prepared By	Date	Cementing	Logging Company	Mud Loggers	Mud Company	Directional
Marc Harvey	1/18/2012	O-Tex Greg Kirby (580) 475-2541	TBD	Horizon Mud Logging Russ Wollard (405) 612-2042	Chaparral Drig Fluids Jeff Taylor (405) 637-6260	DrillRight Technologies Dick Spencer (405) 850-5935
		Liner Hanger TIW Chuck Boyd 405-226-7672	Soil Farming Company Mudslingers, LLC Kirsti James (580) 541-9508		HWDP Smith/Thomas Tool Dallas Clark (405-712-3624)	

Total Measured Depth: 10,010' MD
 True Vertical Depth: 5,194' TVD