



**Notice:** Fill out COMPLETELY and return to Conservation Division at the address below within 60 days from plugging date.

KANSAS CORPORATION COMMISSION 1068733  
OIL & GAS CONSERVATION DIVISION

Form CP-4  
March 2009

Type or Print on this Form  
Form must be Signed  
All blanks must be Filled

**WELL PLUGGING RECORD**  
K.A.R. 82-3-117

OPERATOR: License #: \_\_\_\_\_  
 Name: \_\_\_\_\_  
 Address 1: \_\_\_\_\_  
 Address 2: \_\_\_\_\_  
 City: \_\_\_\_\_ State: \_\_\_\_\_ Zip: \_\_\_\_\_ + \_\_\_\_\_  
 Contact Person: \_\_\_\_\_  
 Phone: ( \_\_\_\_\_ ) \_\_\_\_\_  
 Type of Well: (Check one)  Oil Well  Gas Well  OG  D&A  Cathodic  
 Water Supply Well  Other: \_\_\_\_\_  SWD Permit #: \_\_\_\_\_  
 ENHR Permit #: \_\_\_\_\_  Gas Storage Permit #: \_\_\_\_\_  
 Is ACO-1 filed?  Yes  No If not, is well log attached?  Yes  No  
 Producing Formation(s): List All (If needed attach another sheet)  
 \_\_\_\_\_ Depth to Top: \_\_\_\_\_ Bottom: \_\_\_\_\_ T.D. \_\_\_\_\_  
 \_\_\_\_\_ Depth to Top: \_\_\_\_\_ Bottom: \_\_\_\_\_ T.D. \_\_\_\_\_  
 \_\_\_\_\_ Depth to Top: \_\_\_\_\_ Bottom: \_\_\_\_\_ T.D. \_\_\_\_\_

API No. 15 - \_\_\_\_\_  
 Spot Description: \_\_\_\_\_  
 \_\_\_\_\_ - \_\_\_\_\_ - \_\_\_\_\_ Sec. \_\_\_\_\_ Twp. \_\_\_\_\_ S. R. \_\_\_\_\_  East  West  
 \_\_\_\_\_ Feet from  North /  South Line of Section  
 \_\_\_\_\_ Feet from  East /  West Line of Section  
 Footages Calculated from Nearest Outside Section Corner:  
 NE  NW  SE  SW  
 County: \_\_\_\_\_  
 Lease Name: \_\_\_\_\_ Well #: \_\_\_\_\_  
 Date Well Completed: \_\_\_\_\_  
 The plugging proposal was approved on: \_\_\_\_\_ (Date)  
 by: \_\_\_\_\_ (KCC District Agent's Name)  
 Plugging Commenced: \_\_\_\_\_  
 Plugging Completed: \_\_\_\_\_

Show depth and thickness of all water, oil and gas formations.

Oil, Gas or Water Records		Casing Record (Surface, Conductor & Production)			
Formation	Content	Casing	Size	Setting Depth	Pulled Out

Describe in detail the manner in which the well is plugged, indicating where the mud fluid was placed and the method or methods used in introducing it into the hole. If cement or other plugs were used, state the character of same depth placed from (bottom), to (top) for each plug set.

Plugging Contractor License #: \_\_\_\_\_ Name: \_\_\_\_\_  
 Address 1: \_\_\_\_\_ Address 2: \_\_\_\_\_  
 City: \_\_\_\_\_ State: \_\_\_\_\_ Zip: \_\_\_\_\_ + \_\_\_\_\_  
 Phone: ( \_\_\_\_\_ ) \_\_\_\_\_  
 Name of Party Responsible for Plugging Fees: \_\_\_\_\_  
 State of \_\_\_\_\_ County, \_\_\_\_\_, ss.  
 \_\_\_\_\_  Employee of Operator or  Operator on above-described well,  
 (Print Name)

being first duly sworn on oath, says: That I have knowledge of the facts statements, and matters herein contained, and the log of the above-described well is as filed, and the same are true and correct, so help me God.

Submitted Electronically

Mail to: KCC - Conservation Division, 130 S. Market - Room 2078, Wichita, Kansas 67202



## DRILL STEM TEST REPORT

Prepared For: **Jason Oil Company LLC**

3718 83rd Street  
PO Box 701  
Russell, Kansas 67665+0701

ATTN: Jeff Lawler

**18/16S/14W/Barton**

**Dietz #1**

Start Date: 2011.11.16 @ 03:20:00

End Date: 2011.11.16 @ 09:08:30

Job Ticket #: 18799                      DST #: 3

Superior Testers Enterprises LLC  
PO Box 138 Great Bend KS 67530  
1-800-792-6902

Printed: 2011.11.16 @ 07:21:05



# DRILL STEM TEST REPORT

Jason Oil Company LLC  
 3718 83rd Street  
 PO Box 701  
 Russell, Kansas 67665+0701  
 ATTN: Jeff Lawler

**Dietz #1**  
**18/16S/14W/Barton**  
 Job Ticket: 18799      **DST#: 3**  
 Test Start: 2011.11.16 @ 03:20:00

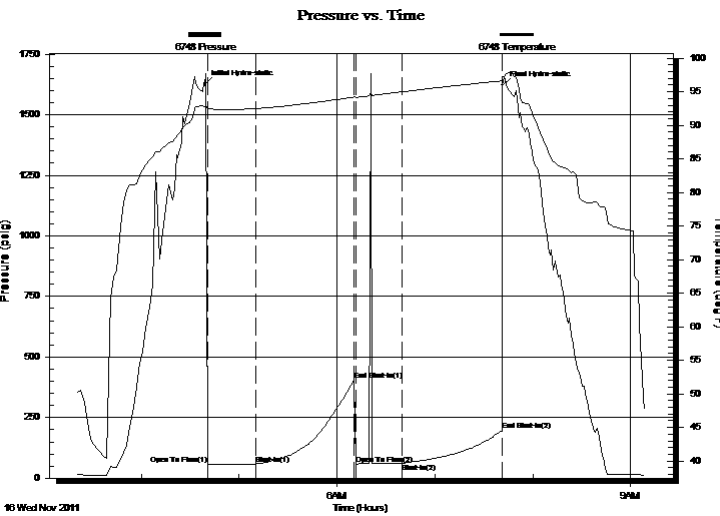
## GENERAL INFORMATION:

Formation: **Lansing/Kansas City**  
 Deviated: No Whipstock:      ft (KB)  
 Time Tool Opened: 04:40:30  
 Time Test Ended: 09:08:30  
 Interval: **3282.00 ft (KB) To 3345.00 ft (KB) (TVD)**  
 Total Depth: 3345.00 ft (KB) (TVD)  
 Hole Diameter: 7.88 inches Hole Condition: Fair  
 Test Type: Conventional Bottom Hole (Initial)  
 Tester: Ken Swinney  
 Unit No: 3325 Great Bend/62  
 Reference Elevations: 1918.00 ft (KB)  
 1913.00 ft (CF)  
 KB to GR/CF: 5.00 ft

## Serial #: 6748      Outside

Press @ Run Depth: 62.31 psig @ 3341.92 ft (KB)      Capacity: 5000.00 psig  
 Start Date: 2011.11.16      End Date: 2011.11.16      Last Calib.: 2011.11.16  
 Start Time: 03:20:00      End Time: 09:08:30      Time On Btm: 2011.11.16 @ 04:39:00  
 Time Off Btm: 2011.11.16 @ 07:41:30

TEST COMMENT: 1ST Open 30 Minutes/Weak blow/Blow built to 3/4 inch then died back to 1/2 inch  
 1ST Shut In 60 Minutes/No blow back  
 2ND Open 30 Minutes/No blow /Flush tool didnt help  
 2ND Shut In 60 Minutes/No blow back



## PRESSURE SUMMARY

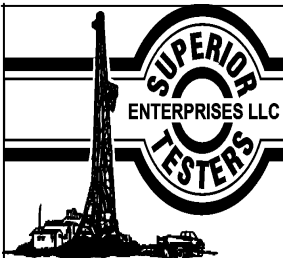
Time (Min.)	Pressure (psig)	Temp (deg F)	Annotation
0	1623.93	92.82	Initial Hydro-static
2	55.90	92.48	Open To Flow (1)
31	58.02	92.48	Shut-In(1)
92	404.59	94.19	End Shut-In(1)
93	58.92	94.15	Open To Flow (2)
121	62.31	94.98	Shut-In(2)
182	197.02	96.62	End Shut-In(2)
183	1621.00	97.26	Final Hydro-static

## Recovery

Length (ft)	Description	Volume (bbl)
15.00	Mud 100%	0.22

## Gas Rates

Choke (inches)	Pressure (psig)	Gas Rate (Mcf/d)



# DRILL STEM TEST REPORT

Jason Oil Company LLC  
 3718 83rd Street  
 PO Box 701  
 Russell, Kansas 67665+0701  
 ATTN: Jeff Lawler

**Dietz #1**  
**18/16S/14W/Barton**  
 Job Ticket: 18799 **DST#: 3**  
 Test Start: 2011.11.16 @ 03:20:00

## GENERAL INFORMATION:

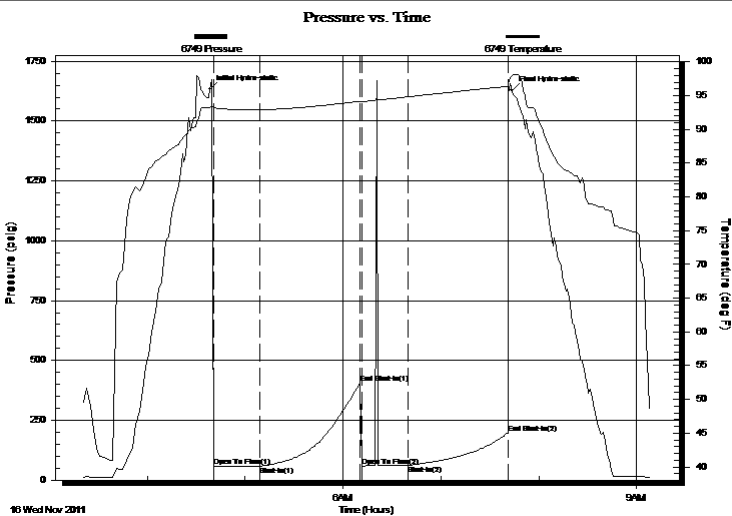
Formation: **Lansing/Kansas City**  
 Deviated: No Whipstock: **ft (KB)**  
 Time Tool Opened: 04:40:30  
 Time Test Ended: 09:08:30  
 Interval: **3282.00 ft (KB) To 3345.00 ft (KB) (TVD)**  
 Total Depth: **3345.00 ft (KB) (TVD)**  
 Hole Diameter: **7.88 inches** Hole Condition: **Fair**  
 Test Type: **Conventional Bottom Hole (Initial)**  
 Tester: **Ken Swinney**  
 Unit No: **3325 Great Bend/62**  
 Reference Elevations: **1918.00 ft (KB)**  
**1913.00 ft (CF)**  
 KB to GR/CF: **5.00 ft**

## Serial #: 6749

Inside

Press @ RunDepth: **197.38 psig @ 3340.92 ft (KB)** Capacity: **5000.00 psig**  
 Start Date: **2011.11.16** End Date: **2011.11.16** Last Calib.: **2011.11.16**  
 Start Time: **03:20:00** End Time: **09:09:00** Time On Btm: **2011.11.16 @ 04:38:30**  
 Time Off Btm: **2011.11.16 @ 07:43:30**

TEST COMMENT: 1ST Open 30 Minutes/Weak blow/Blow built to 3/4 inch then died back to 1/2 inch  
 1ST Shut In 60 Minutes/No blow back  
 2ND Open 30 Minutes/No blow/Flush tool didnt help  
 2ND Shut In 60 Minutes/No blow back



## PRESSURE SUMMARY

Time (Min.)	Pressure (psig)	Temp (deg F)	Annotation
0	1631.80	93.23	Initial Hydro-static
2	56.52	93.20	Open To Flow (1)
31	58.47	92.92	Shut-In(1)
93	405.30	94.17	End Shut-In(1)
93	59.28	94.12	Open To Flow (2)
122	62.61	94.83	Shut-In(2)
183	197.38	96.38	End Shut-In(2)
185	1627.66	98.03	Final Hydro-static

## Recovery

Length (ft)	Description	Volume (bbl)
15.00	Mud 100%	0.22

## Gas Rates

	Choke (inches)	Pressure (psig)	Gas Rate (Mcf/d)



# DRILL STEM TEST REPORT

**TOOL DIAGRAM**

Jason Oil Company LLC

**Dietz #1**

3718 83rd Street  
 PO Box 701  
 Russell, Kansas 67665+0701  
 ATTN: Jeff Lawler

**18/16S/14W/Barton**

Job Ticket: 18799      **DST#: 3**  
 Test Start: 2011.11.16 @ 03:20:00

**Tool Information**

Drill Pipe:	Length: 3296.00 ft	Diameter: 3.88 inches	Volume: 48.20 bbl	Tool Weight: 2000.00 lb
Heavy Wt. Pipe:	Length: 0.00 ft	Diameter: 0.00 inches	Volume: 0.00 bbl	Weight set on Packer: 20000.00 lb
Drill Collar:	Length: 0.00 ft	Diameter: 0.00 inches	Volume: 0.00 bbl	Weight to Pull Loose: 57000.00 lb
			<u>Total Volume: 48.20 bbl</u>	Tool Chased 0.00 ft
Drill Pipe Above KB:	34.00 ft			String Weight: Initial 43000.00 lb
Depth to Top Packer:	3282.00 ft			Final 43000.00 lb
Depth to Bottom Packer:	ft			
Interval between Packers:	62.92 ft			
Tool Length:	82.92 ft			
Number of Packers:	2	Diameter: 6.75 inches		

Tool Comments:

<b>Tool Description</b>	<b>Length (ft)</b>	<b>Serial No.</b>	<b>Position</b>	<b>Depth (ft)</b>	<b>Accum. Lengths</b>
-------------------------	--------------------	-------------------	-----------------	-------------------	-----------------------

Shut-in tool	5.00			3267.00	
Hydraulic tool	5.00			3272.00	
Packer	5.00			3277.00	20.00      Bottom Of Top Packer
Packer	5.00			3282.00	
Anchor	5.00			3287.00	
change over sub	0.75			3287.75	
drill pipe	31.42			3319.17	
change over sub	0.75			3319.92	
anchor	20.00			3339.92	
Recorder	1.00	6749	Inside	3340.92	
Recorder	1.00	6748	Outside	3341.92	
bull plug	3.00			3344.92	62.92      Bottom Packers & Anchor

**Total Tool Length: 82.92**



# DRILL STEM TEST REPORT

## FLUID SUMMARY

Jason Oil Company LLC

**Dietz #1**

3718 83rd Street  
PO Box 701  
Russell, Kansas 67665+0701  
ATTN: Jeff Lawler

**18/16S/14W/Barton**

Job Ticket: 18799

**DST#: 3**

Test Start: 2011.11.16 @ 03:20:00

### Mud and Cushion Information

Mud Type: Gel Chem  
Mud Weight: 9.00 lb/gal  
Viscosity: 54.00 sec/qt  
Water Loss: 8.79 in<sup>3</sup>  
Resistivity: ohm.m  
Salinity: 5000.00 ppm  
Filter Cake: 1.00 inches

Cushion Type:  
Cushion Length: ft  
Cushion Volume: bbl  
Gas Cushion Type:  
Gas Cushion Pressure: psig

Oil API: deg API  
Water Salinity: ppm

### Recovery Information

Recovery Table

Length ft	Description	Volume bbl
15.00	Mud 100%	0.219

Total Length: 15.00 ft      Total Volume: 0.219 bbl

Num Fluid Samples: 0

Num Gas Bombs: 0

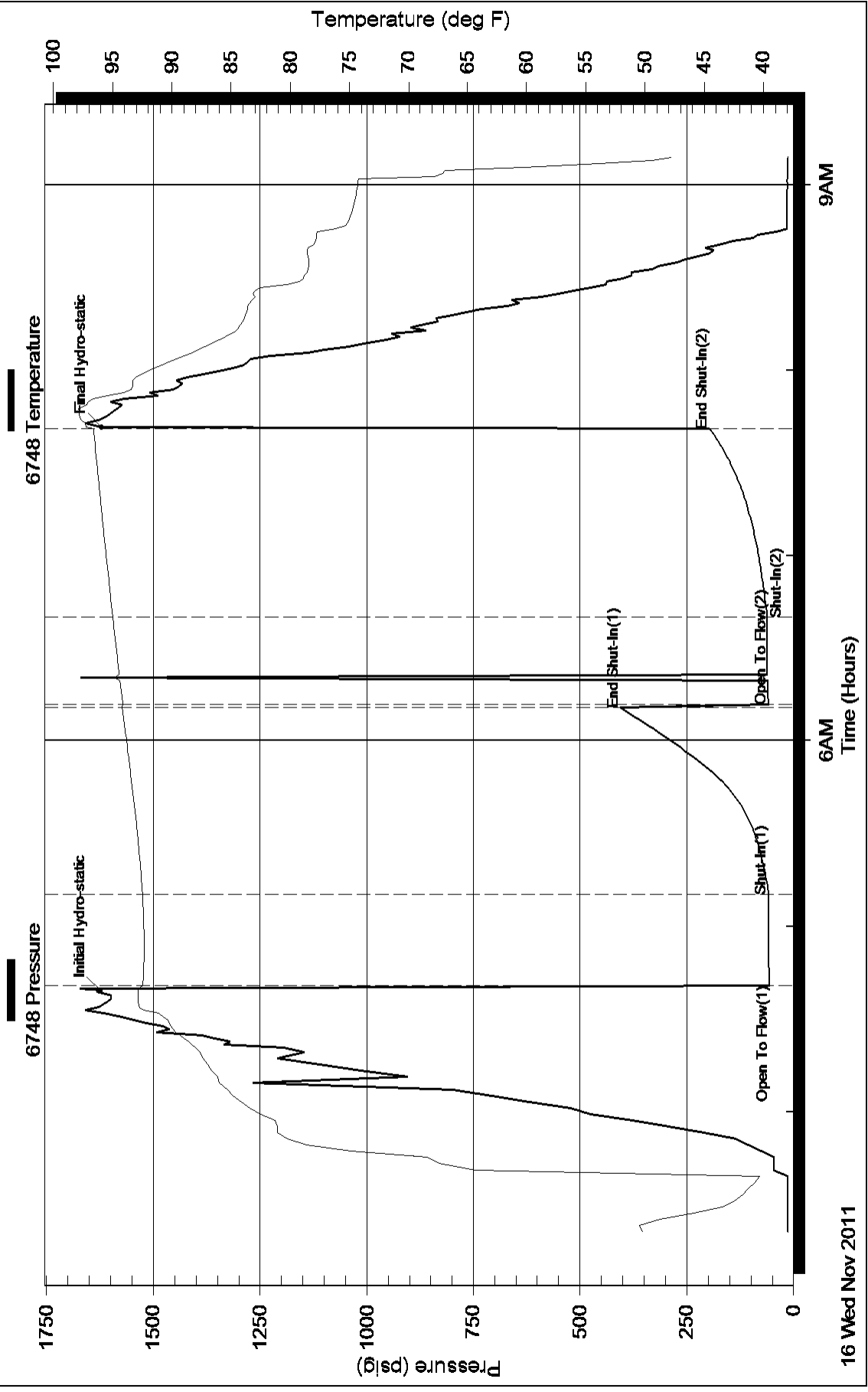
Serial #:

Laboratory Name:

Laboratory Location:

Recovery Comments:

### Pressure vs. Time

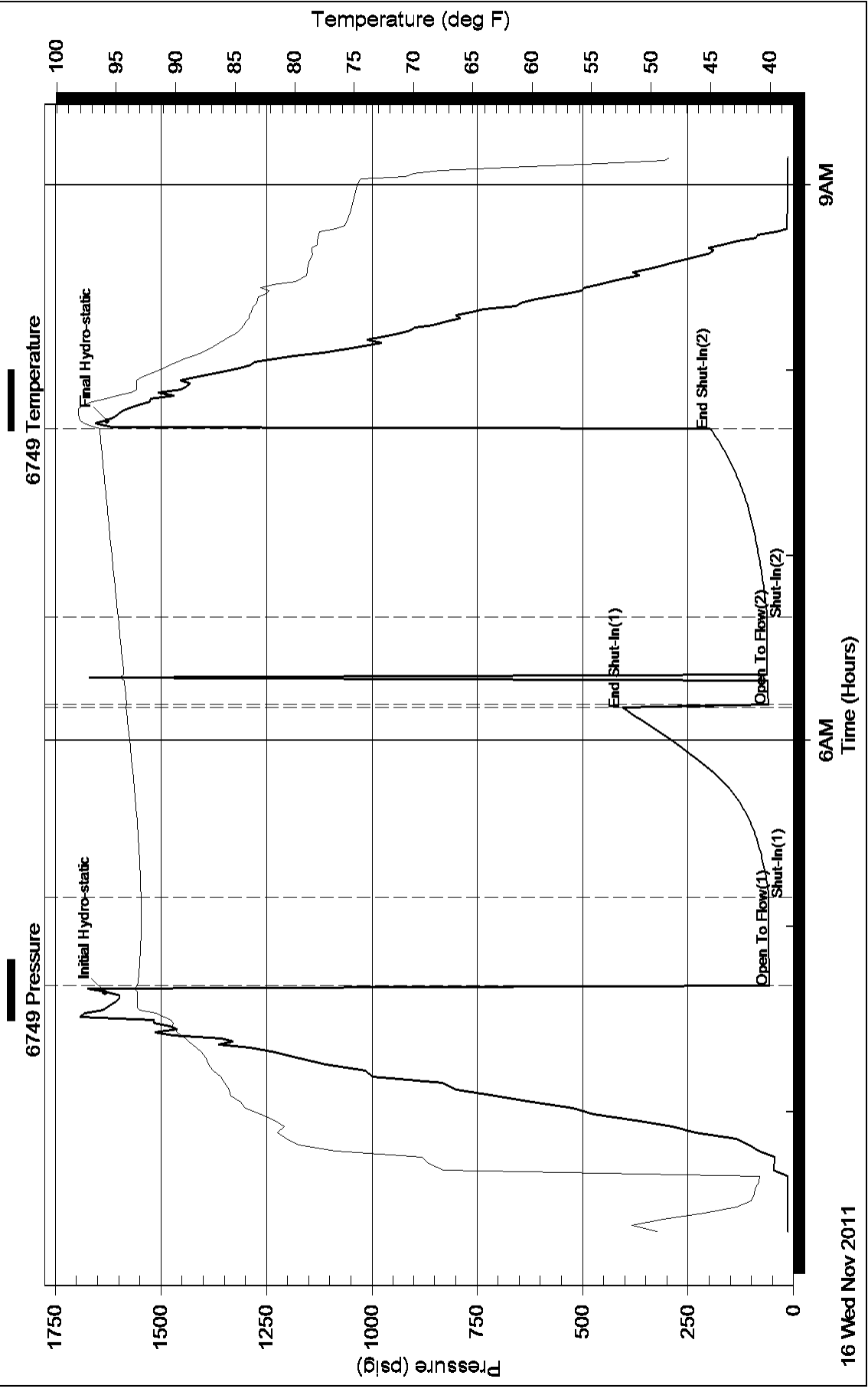


16 Wed Nov 2011

6AM  
Time (Hours)

9AM

# Pressure vs. Time



16 Wed Nov 2011

6AM  
Time (Hours)

9AM





## DRILL STEM TEST REPORT

Prepared For: **Jason Oil Company LLC**

3718 83rd Street  
PO Box 701  
Russell, Kansas 67665+0701

ATTN: Jeff Lawler

**18/16S/14W/Barton**

**Dietz #1**

Start Date: 2011.11.15 @ 10:16:00

End Date: 2011.11.15 @ 15:36:30

Job Ticket #: 18798                      DST #: 2

Superior Testers Enterprises LLC  
PO Box 138 Great Bend KS 67530  
1-800-792-6902

Printed: 2011.11.15 @ 13:47:14



# DRILL STEM TEST REPORT

Jason Oil Company LLC

**Dietz #1**

3718 83rd Street  
 PO Box 701  
 Russell, Kansas 67665+0701  
 ATTN: Jeff Lawler

**18/16S/14W/Barton**

Job Ticket: 18798      **DST#: 2**  
 Test Start: 2011.11.15 @ 10:16:00

## GENERAL INFORMATION:

Formation: **Lansing/Kansas City**

Deviated: No Whipstock:      ft (KB)

Time Tool Opened: 11:21:30

Time Test Ended: 15:36:30

Test Type: Conventional Bottom Hole (Initial)

Tester: Ken Swinney

Unit No: 3325 Great Bend/62

**Interval: 3202.00 ft (KB) To 3227.00 ft (KB) (TVD)**

Reference Elevations: 1918.00 ft (KB)

Total Depth: 3227.00 ft (KB) (TVD)

1913.00 ft (CF)

Hole Diameter: 7.88 inches Hole Condition: Fair

KB to GR/CF: 5.00 ft

**Serial #: 6748      Outside**

Press @ Run Depth: 43.94 psig @ 3224.00 ft (KB)

Capacity: 5000.00 psig

Start Date: 2011.11.15      End Date: 2011.11.15

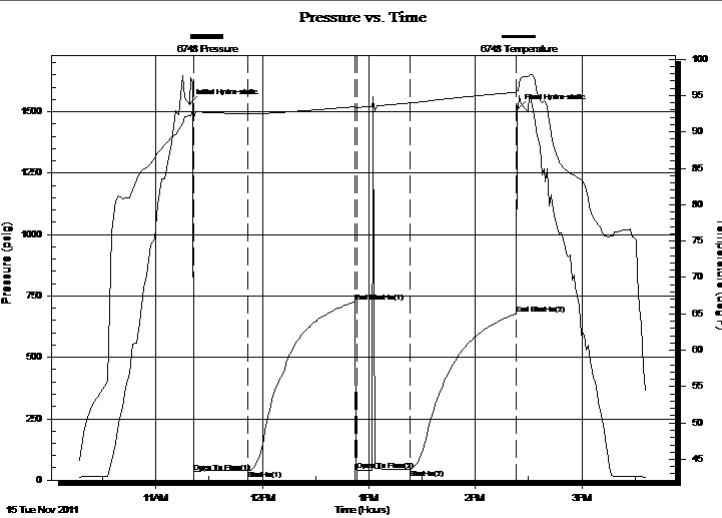
Last Calib.: 2011.11.15

Start Time: 10:16:00      End Time: 15:36:30

Time On Btm: 2011.11.15 @ 11:19:00

Time Off Btm: 2011.11.15 @ 14:24:00

**TEST COMMENT:** 1ST Open      30 Minutes/Weak blow /Blow built to 1 inch  
 1ST Shut In      60 Minutes/No blow back  
 2ND Open      30 Minutes/No blow /Flush tool/Weak surface blow died 8 minutes later  
 2ND Shut In      60 Minutes/No blow back



## PRESSURE SUMMARY

Time (Min.)	Pressure (psig)	Temp (deg F)	Annotation
0	1533.25	92.21	Initial Hydro-static
3	33.82	91.95	Open To Flow (1)
33	39.25	92.48	Shut-In(1)
93	725.62	93.48	End Shut-In(1)
94	40.79	93.36	Open To Flow (2)
124	43.94	93.98	Shut-In(2)
184	677.93	95.43	End Shut-In(2)
185	1511.12	95.64	Final Hydro-static

## Recovery

Length (ft)	Description	Volume (bbl)
20.00	Mud 100%	0.29

## Gas Rates

Choke (inches)	Pressure (psig)	Gas Rate (Mcf/d)



# DRILL STEM TEST REPORT

Jason Oil Company LLC

**Dietz #1**

3718 83rd Street  
 PO Box 701  
 Russell, Kansas 67665+0701  
 ATTN: Jeff Lawler

**18/16S/14W/Barton**

Job Ticket: 18798      **DST#: 2**

Test Start: 2011.11.15 @ 10:16:00

## GENERAL INFORMATION:

Formation: **Lansing/Kansas City**

Deviated: No Whipstock:                      ft (KB)

Time Tool Opened: 11:21:30

Time Test Ended: 15:36:30

Test Type: Conventional Bottom Hole (Initial)

Tester: Ken Swinney

Unit No: 3325 Great Bend/62

**Interval: 3202.00 ft (KB) To 3227.00 ft (KB) (TVD)**

Reference Elevations: 1918.00 ft (KB)

Total Depth: 3227.00 ft (KB) (TVD)

1913.00 ft (CF)

Hole Diameter: 7.88 inches Hole Condition: Fair

KB to GR/CF: 5.00 ft

**Serial #: 6749      Inside**

Press @ Run Depth: 677.64 psig @ 3223.00 ft (KB)

Capacity: 5000.00 psig

Start Date: 2011.11.15      End Date: 2011.11.15

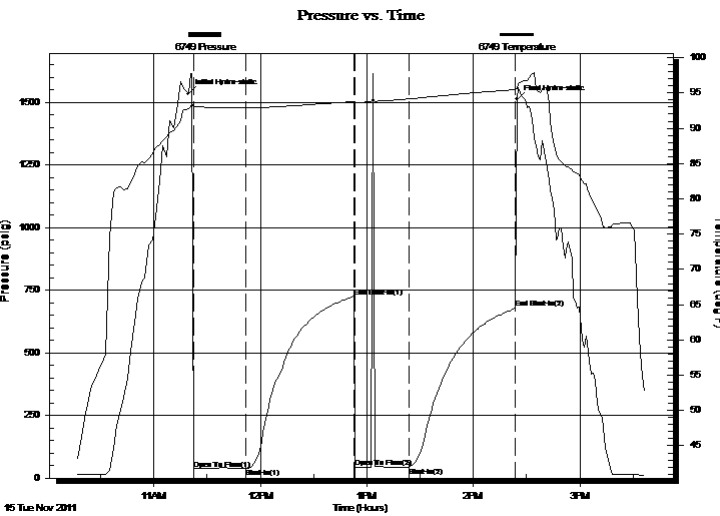
Last Calib.: 2011.11.15

Start Time: 10:16:00      End Time: 15:37:00

Time On Btm: 2011.11.15 @ 11:19:30

Time Off Btm: 2011.11.15 @ 14:24:30

**TEST COMMENT:** 1ST Open 30 Minutes/Weak blow /Blow built to 1 inch  
 1ST Shut In 60 Minutes/No blow back  
 2ND Open 30 Minutes/No blow /Flush tool/Weak surface blow died 8 minutes later  
 2ND Shut In 60 Minutes/No blow back



## PRESSURE SUMMARY

Time (Min.)	Pressure (psig)	Temp (deg F)	Annotation
0	1534.94	92.70	Initial Hydro-static
3	37.14	93.02	Open To Flow (1)
33	40.25	92.85	Shut-In(1)
94	725.52	93.78	End Shut-In(1)
94	41.54	93.64	Open To Flow (2)
124	44.57	94.15	Shut-In(2)
184	677.64	95.47	End Shut-In(2)
185	1513.18	95.66	Final Hydro-static

## Recovery

Length (ft)	Description	Volume (bbl)
20.00	Mud 100%	0.29

## Gas Rates

Choke (inches)	Pressure (psig)	Gas Rate (Mcf/d)



# DRILL STEM TEST REPORT

**TOOL DIAGRAM**

Jason Oil Company LLC

**Dietz #1**

3718 83rd Street  
 PO Box 701  
 Russell, Kansas 67665+0701  
 ATTN: Jeff Lawler

**18/16S/14W/Barton**

Job Ticket: 18798      **DST#: 2**  
 Test Start: 2011.11.15 @ 10:16:00

**Tool Information**

Drill Pipe:	Length: 3202.00 ft	Diameter: 3.88 inches	Volume: 46.83 bbl	Tool Weight:	2000.00 lb
Heavy Wt. Pipe:	Length: 0.00 ft	Diameter: 0.00 inches	Volume: 0.00 bbl	Weight set on Packer:	20000.00 lb
Drill Collar:	Length: 0.00 ft	Diameter: 0.00 inches	Volume: 0.00 bbl	Weight to Pull Loose:	52000.00 lb
			<u>Total Volume: 46.83 bbl</u>	Tool Chased	0.00 ft
Drill Pipe Above KB:	20.00 ft			String Weight: Initial	42000.00 lb
Depth to Top Packer:	3202.00 ft			Final	42000.00 lb
Depth to Bottom Packer:	ft				
Interval between Packers:	25.00 ft				
Tool Length:	45.00 ft				
Number of Packers:	2	Diameter: 6.75 inches			

Tool Comments:

<b>Tool Description</b>	<b>Length (ft)</b>	<b>Serial No.</b>	<b>Position</b>	<b>Depth (ft)</b>	<b>Accum. Lengths</b>
-------------------------	--------------------	-------------------	-----------------	-------------------	-----------------------

Shut-in tool	5.00			3187.00	
Hydraulic tool	5.00			3192.00	
Packer	5.00			3197.00	20.00      Bottom Of Top Packer
Packer	5.00			3202.00	
Anchor	20.00			3222.00	
Recorder	1.00	6749	Inside	3223.00	
Recorder	1.00	6748	Outside	3224.00	
Bull plug	3.00			3227.00	25.00      Bottom Packers & Anchor

**Total Tool Length: 45.00**



# DRILL STEM TEST REPORT

## FLUID SUMMARY

Jason Oil Company LLC

**Dietz #1**

3718 83rd Street  
PO Box 701  
Russell, Kansas 67665+0701  
ATTN: Jeff Lawler

**18/16S/14W/Barton**

Job Ticket: 18798

**DST#: 2**

Test Start: 2011.11.15 @ 10:16:00

### Mud and Cushion Information

Mud Type: Gel Chem  
Mud Weight: 9.00 lb/gal  
Viscosity: 56.00 sec/qt  
Water Loss: 7.99 in<sup>3</sup>  
Resistivity: ohm.m  
Salinity: 2000.00 ppm  
Filter Cake: 1.00 inches

Cushion Type:  
Cushion Length: ft  
Cushion Volume: bbl  
Gas Cushion Type:  
Gas Cushion Pressure: psig

Oil API: deg API  
Water Salinity: ppm

### Recovery Information

Recovery Table

Length ft	Description	Volume bbl
20.00	Mud 100%	0.292

Total Length: 20.00 ft      Total Volume: 0.292 bbl

Num Fluid Samples: 0

Num Gas Bombs: 0

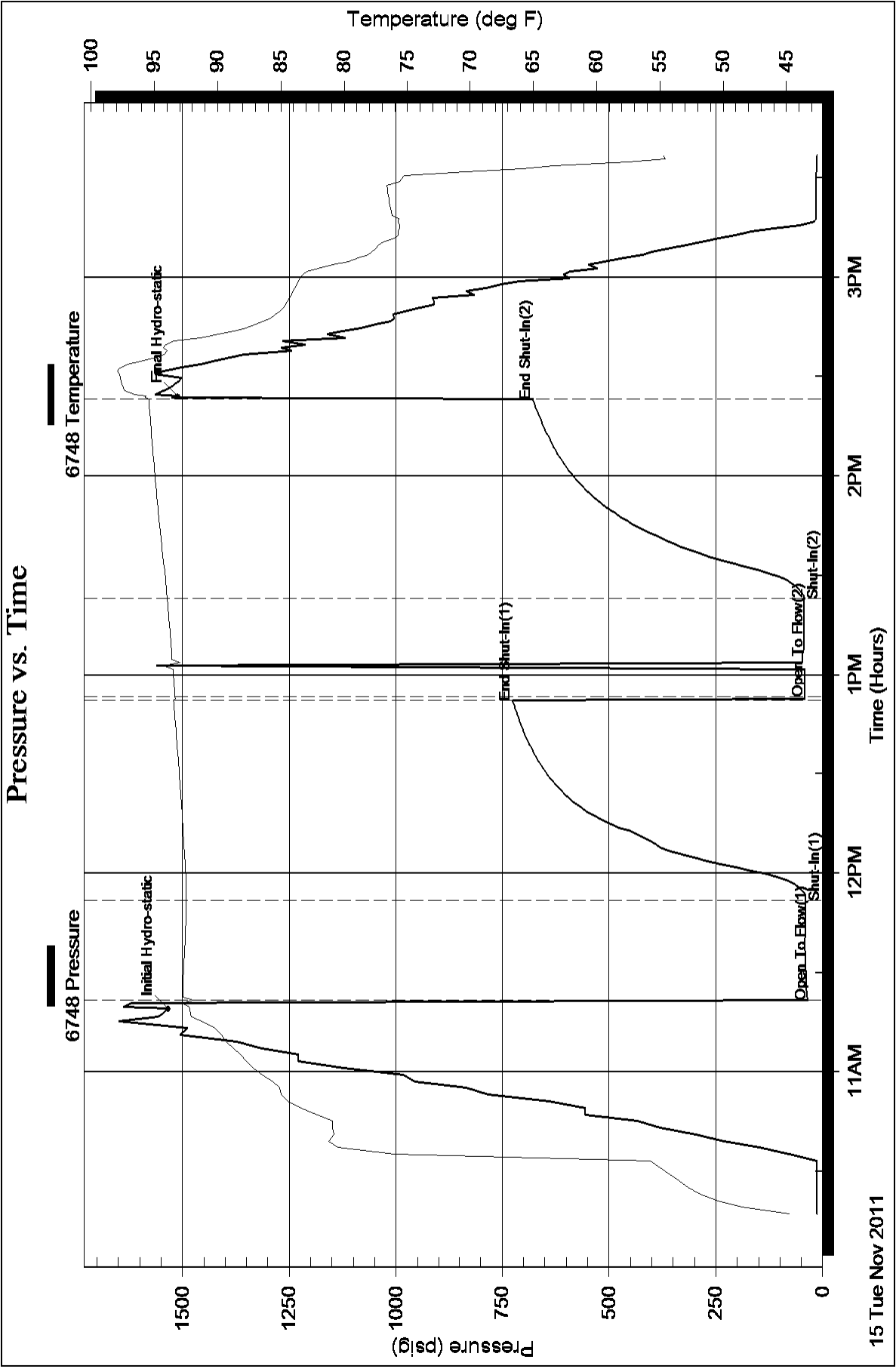
Serial #:

Laboratory Name:

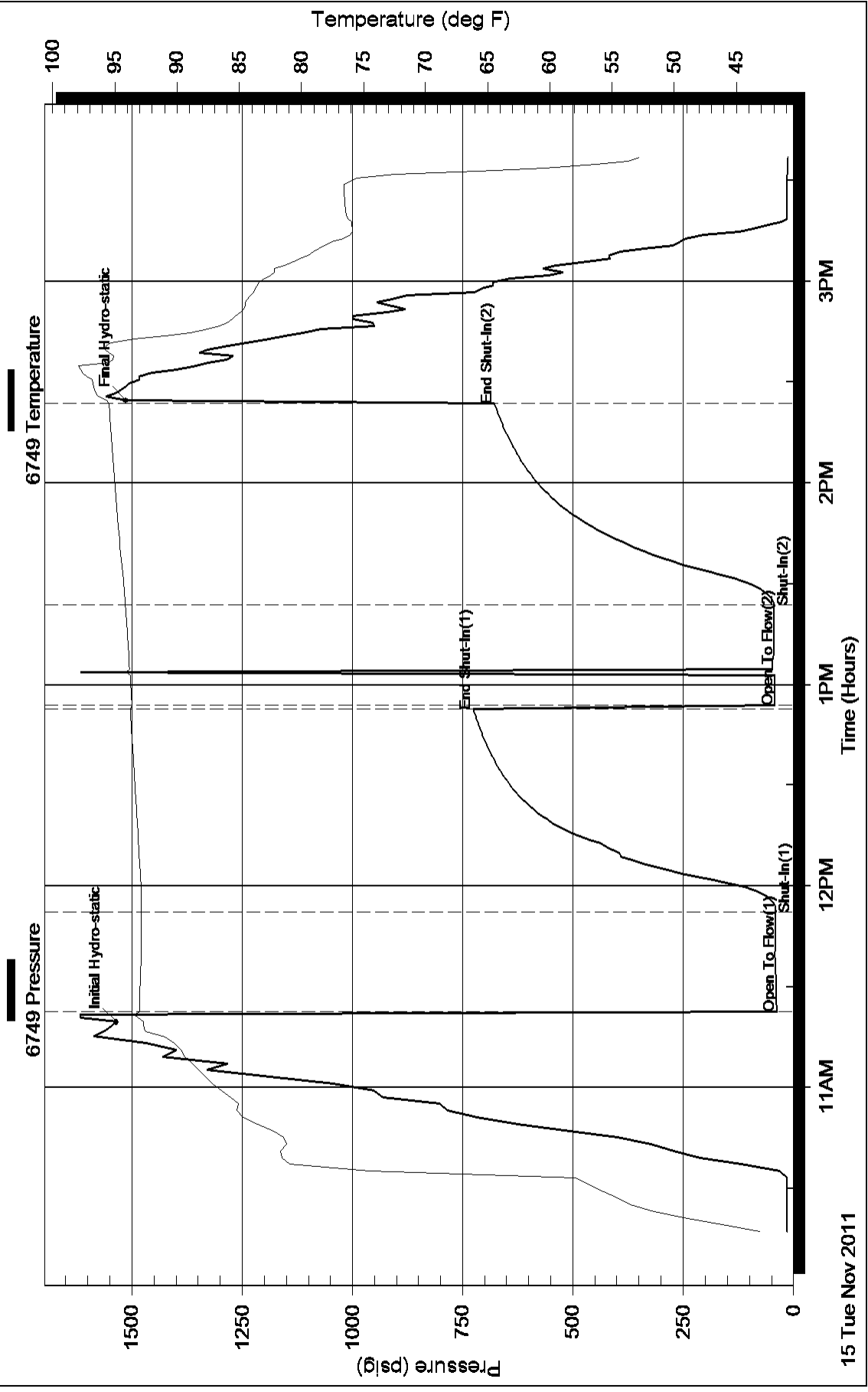
Laboratory Location:

Recovery Comments:

### Pressure vs. Time



### Pressure vs. Time





## DRILL STEM TEST REPORT

Prepared For: **Jason Oil Company LLC**

3718 83rd Street  
PO Box 701  
Russell, Kansas 67665+0701

ATTN: Jeff Lawler

**18/16S/14W/Barton**

**Dietz #1**

Start Date: 2011.11.16 @ 03:20:00

End Date: 2011.11.16 @ 09:08:30

Job Ticket #: 18799                      DST #: 3

Superior Testers Enterprises LLC  
PO Box 138 Great Bend KS 67530  
1-800-792-6902

Printed: 2011.11.16 @ 07:21:05





# DRILL STEM TEST REPORT

Jason Oil Company LLC  
 3718 83rd Street  
 PO Box 701  
 Russell, Kansas 67665+0701  
 ATTN: Jeff Lawler

**Dietz #1**  
**18/16S/14W/Barton**  
 Job Ticket: 18799      **DST#: 3**  
 Test Start: 2011.11.16 @ 03:20:00

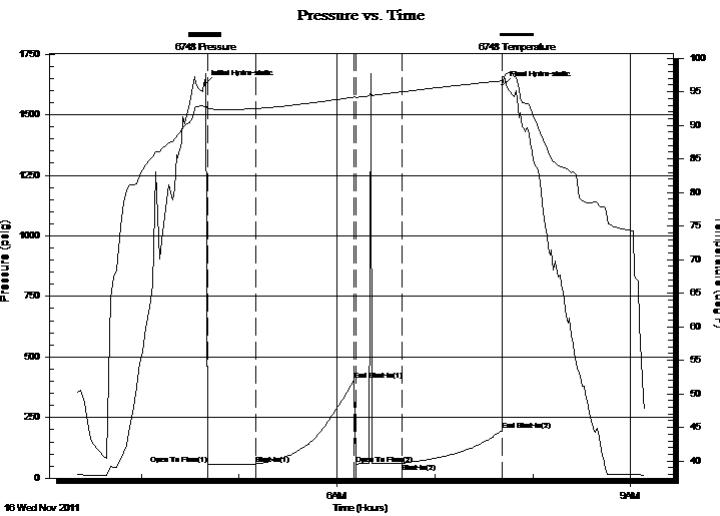
## GENERAL INFORMATION:

Formation: **Lansing/Kansas City**  
 Deviated: No Whipstock:      ft (KB)  
 Time Tool Opened: 04:40:30  
 Time Test Ended: 09:08:30  
 Interval: **3282.00 ft (KB) To 3345.00 ft (KB) (TVD)**  
 Total Depth: 3345.00 ft (KB) (TVD)  
 Hole Diameter: 7.88 inches Hole Condition: Fair  
 Test Type: Conventional Bottom Hole (Initial)  
 Tester: Ken Swinney  
 Unit No: 3325 Great Bend/62  
 Reference Elevations: 1918.00 ft (KB)  
 1913.00 ft (CF)  
 KB to GR/CF: 5.00 ft

## Serial #: 6748      Outside

Press @ Run Depth: 62.31 psig @ 3341.92 ft (KB)      Capacity: 5000.00 psig  
 Start Date: 2011.11.16      End Date: 2011.11.16      Last Calib.: 2011.11.16  
 Start Time: 03:20:00      End Time: 09:08:30      Time On Btm: 2011.11.16 @ 04:39:00  
 Time Off Btm: 2011.11.16 @ 07:41:30

TEST COMMENT: 1ST Open 30 Minutes/Weak blow/Blow built to 3/4 inch then died back to 1/2 inch  
 1ST Shut In 60 Minutes/No blow back  
 2ND Open 30 Minutes/No blow/Flush tool didnt help  
 2ND Shut In 60 Minutes/No blow back



## PRESSURE SUMMARY

Time (Min.)	Pressure (psig)	Temp (deg F)	Annotation
0	1623.93	92.82	Initial Hydro-static
2	55.90	92.48	Open To Flow (1)
31	58.02	92.48	Shut-In(1)
92	404.59	94.19	End Shut-In(1)
93	58.92	94.15	Open To Flow (2)
121	62.31	94.98	Shut-In(2)
182	197.02	96.62	End Shut-In(2)
183	1621.00	97.26	Final Hydro-static

## Recovery

Length (ft)	Description	Volume (bbl)
15.00	Mud 100%	0.22

## Gas Rates

Choke (inches)	Pressure (psig)	Gas Rate (Mcf/d)



# DRILL STEM TEST REPORT

Jason Oil Company LLC  
 3718 83rd Street  
 PO Box 701  
 Russell, Kansas 67665+0701  
 ATTN: Jeff Lawler

**Dietz #1**  
**18/16S/14W/Barton**  
 Job Ticket: 18799      **DST#: 3**  
 Test Start: 2011.11.16 @ 03:20:00

## GENERAL INFORMATION:

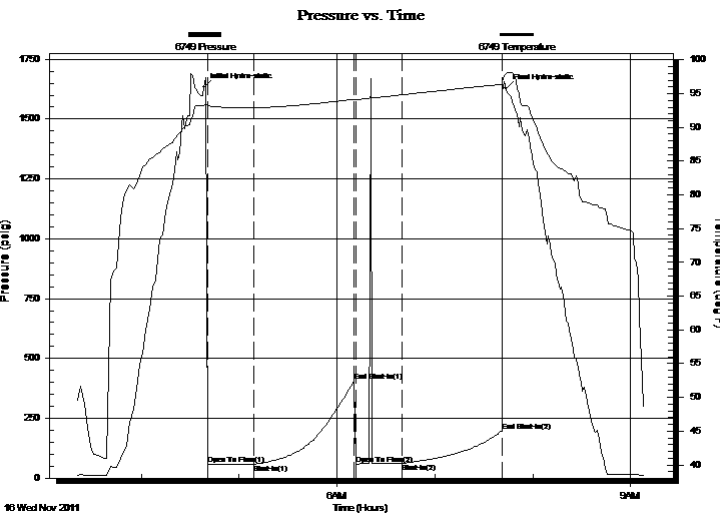
Formation: **Lansing/Kansas City**  
 Deviated: No Whipstock:      ft (KB)  
 Time Tool Opened: 04:40:30  
 Time Test Ended: 09:08:30  
 Interval: **3282.00 ft (KB) To 3345.00 ft (KB) (TVD)**  
 Total Depth: 3345.00 ft (KB) (TVD)  
 Hole Diameter: 7.88 inches Hole Condition: Fair  
 Test Type: Conventional Bottom Hole (Initial)  
 Tester: Ken Swinney  
 Unit No: 3325 Great Bend/62  
 Reference Elevations: 1918.00 ft (KB)  
 1913.00 ft (CF)  
 KB to GR/CF: 5.00 ft

## Serial #: 6749

Inside

Press @ Run Depth: 197.38 psig @ 3340.92 ft (KB)      Capacity: 5000.00 psig  
 Start Date: 2011.11.16      End Date: 2011.11.16      Last Calib.: 2011.11.16  
 Start Time: 03:20:00      End Time: 09:09:00      Time On Btm: 2011.11.16 @ 04:38:30  
 Time Off Btm: 2011.11.16 @ 07:43:30

TEST COMMENT: 1ST Open 30 Minutes/Weak blow/Blow built to 3/4 inch then died back to 1/2 inch  
 1ST Shut In 60 Minutes/No blow back  
 2ND Open 30 Minutes/No blow /Flush tool didnt help  
 2ND Shut In 60 Minutes/No blow back



## PRESSURE SUMMARY

Time (Min.)	Pressure (psig)	Temp (deg F)	Annotation
0	1631.80	93.23	Initial Hydro-static
2	56.52	93.20	Open To Flow (1)
31	58.47	92.92	Shut-In(1)
93	405.30	94.17	End Shut-In(1)
93	59.28	94.12	Open To Flow (2)
122	62.61	94.83	Shut-In(2)
183	197.38	96.38	End Shut-In(2)
185	1627.66	98.03	Final Hydro-static

## Recovery

Length (ft)	Description	Volume (bbl)
15.00	Mud 100%	0.22

## Gas Rates

Choke (inches)	Pressure (psig)	Gas Rate (Mcf/d)



# DRILL STEM TEST REPORT

**TOOL DIAGRAM**

Jason Oil Company LLC

**Dietz #1**

3718 83rd Street  
 PO Box 701  
 Russell, Kansas 67665+0701  
 ATTN: Jeff Lawler

**18/16S/14W/Barton**

Job Ticket: 18799      **DST#: 3**  
 Test Start: 2011.11.16 @ 03:20:00

**Tool Information**

Drill Pipe:	Length: 3296.00 ft	Diameter: 3.88 inches	Volume: 48.20 bbl	Tool Weight: 2000.00 lb
Heavy Wt. Pipe:	Length: 0.00 ft	Diameter: 0.00 inches	Volume: 0.00 bbl	Weight set on Packer: 20000.00 lb
Drill Collar:	Length: 0.00 ft	Diameter: 0.00 inches	Volume: 0.00 bbl	Weight to Pull Loose: 57000.00 lb
			<u>Total Volume: 48.20 bbl</u>	Tool Chased 0.00 ft
Drill Pipe Above KB:	34.00 ft			String Weight: Initial 43000.00 lb
Depth to Top Packer:	3282.00 ft			Final 43000.00 lb
Depth to Bottom Packer:	ft			
Interval between Packers:	62.92 ft			
Tool Length:	82.92 ft			
Number of Packers:	2	Diameter: 6.75 inches		

Tool Comments:

<b>Tool Description</b>	<b>Length (ft)</b>	<b>Serial No.</b>	<b>Position</b>	<b>Depth (ft)</b>	<b>Accum. Lengths</b>
-------------------------	--------------------	-------------------	-----------------	-------------------	-----------------------

Shut-in tool	5.00			3267.00	
Hydraulic tool	5.00			3272.00	
Packer	5.00			3277.00	20.00      Bottom Of Top Packer
Packer	5.00			3282.00	
Anchor	5.00			3287.00	
change over sub	0.75			3287.75	
drill pipe	31.42			3319.17	
change over sub	0.75			3319.92	
anchor	20.00			3339.92	
Recorder	1.00	6749	Inside	3340.92	
Recorder	1.00	6748	Outside	3341.92	
bull plug	3.00			3344.92	62.92      Bottom Packers & Anchor

**Total Tool Length: 82.92**



# DRILL STEM TEST REPORT

## FLUID SUMMARY

Jason Oil Company LLC

**Dietz #1**

3718 83rd Street  
PO Box 701  
Russell, Kansas 67665+0701  
ATTN: Jeff Lawler

**18/16S/14W/Barton**

Job Ticket: 18799

**DST#: 3**

Test Start: 2011.11.16 @ 03:20:00

### Mud and Cushion Information

Mud Type: Gel Chem  
Mud Weight: 9.00 lb/gal  
Viscosity: 54.00 sec/qt  
Water Loss: 8.79 in<sup>3</sup>  
Resistivity: ohm.m  
Salinity: 5000.00 ppm  
Filter Cake: 1.00 inches

Cushion Type:  
Cushion Length: ft  
Cushion Volume: bbl  
Gas Cushion Type:  
Gas Cushion Pressure: psig

Oil API: deg API  
Water Salinity: ppm

### Recovery Information

Recovery Table

Length ft	Description	Volume bbl
15.00	Mud 100%	0.219

Total Length: 15.00 ft      Total Volume: 0.219 bbl

Num Fluid Samples: 0

Num Gas Bombs: 0

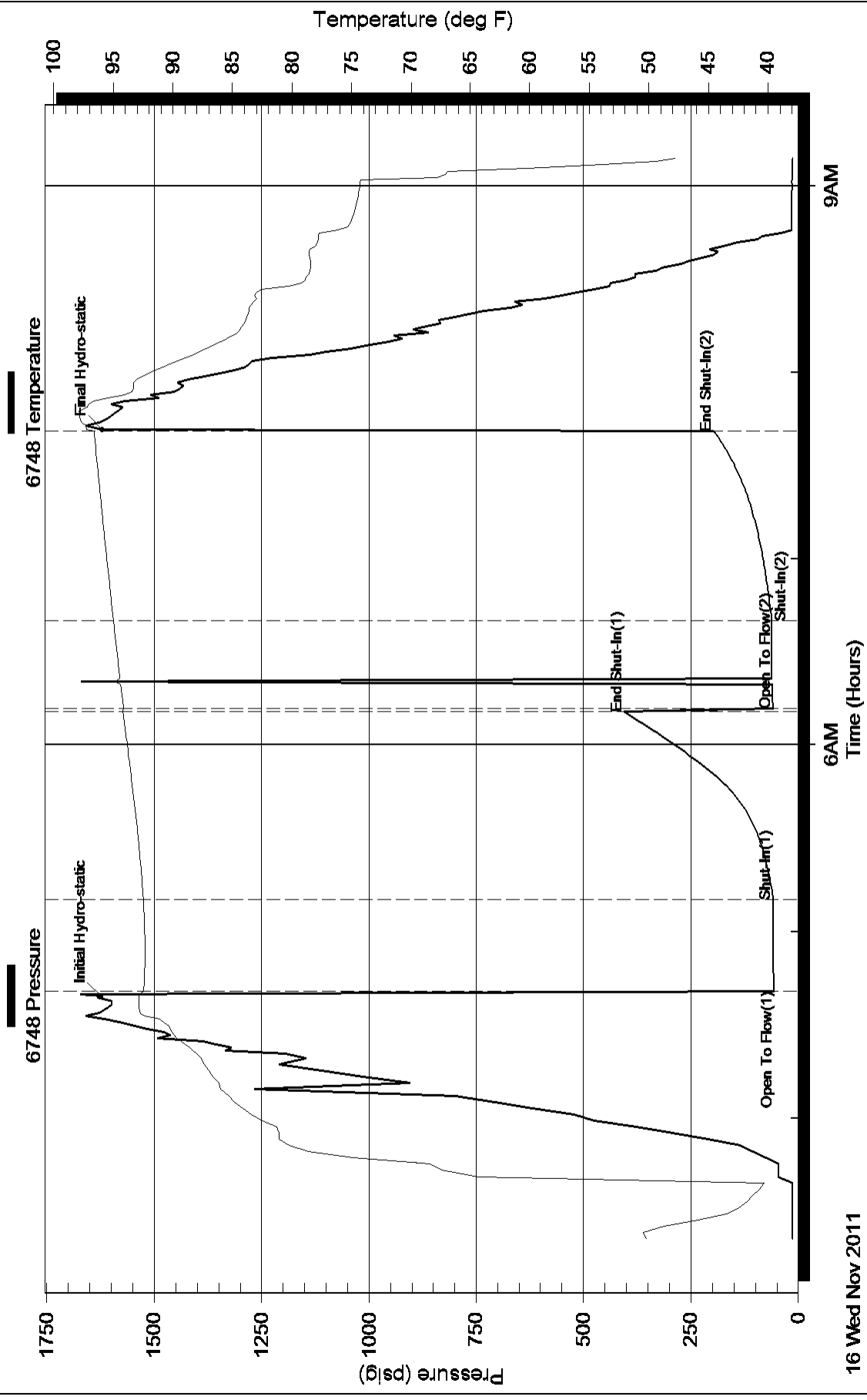
Serial #:

Laboratory Name:

Laboratory Location:

Recovery Comments:

### Pressure vs. Time

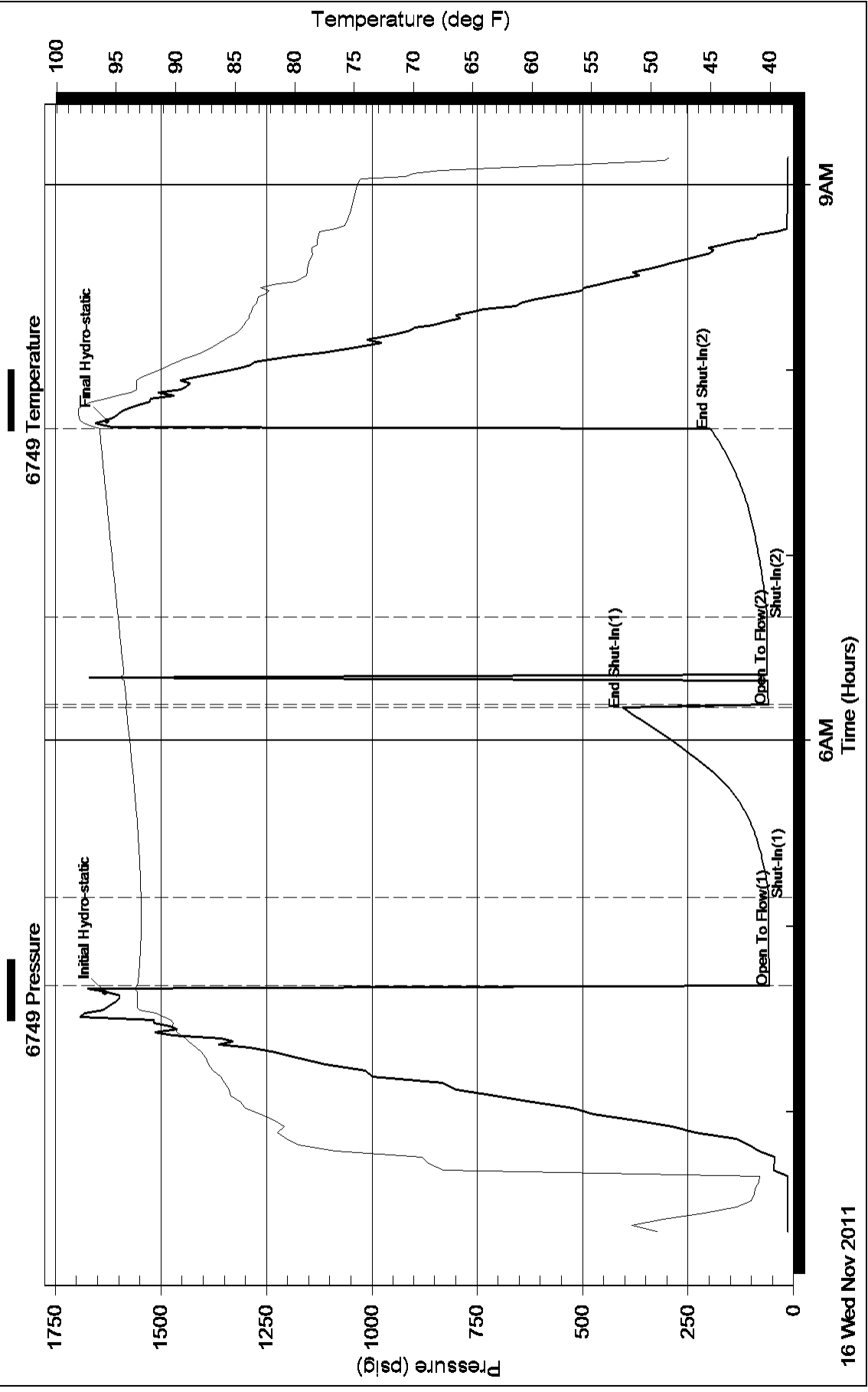


16 Wed Nov 2011

6AM  
Time (Hours)

9AM

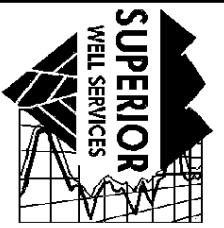
# Pressure vs. Time



16 Wed Nov 2011

6AM  
Time (Hours)

9AM



**SUPERIOR  
Hays,  
Kansas**

**RADIATION  
GUARD LOG**

Company JASON OIL COMPANY, LLC.  
Well DIETZ #1  
Field HERMAN  
County BARTON  
State KANSAS

Company JASON OIL COMPANY, LLC.  
Well DIETZ #1  
Field HERMAN  
County BARTON State KANSAS

Location: API #: 15-009-25628  
330' FNL & 630' FWL  
SEC 18 TWP 16S RGE 14W  
Permanent Datum GROUND LEVEL Elevation 1913  
Log Measured From KELLY BUSHING 5' A.G.L.  
Drilling Measured From KELLY BUSHING  
Other Services  
Elevation  
K.B. 1918  
D.F.  
G.L. 1913

Date	11-17-11
Run Number	ONE
Depth Driller	3480
Depth Logger	3479
Bottom Logged Interval	3478
Top Log Interval	00
Casing Driller	431
Casing Logger	429
Bit Size	7.875
Type Fluid in Hole	CHEMICAL MUD
Density / Viscosity	8.9 / 49
pH / Fluid Loss	9.5 / 10.4
Source of Sample	FLOWLINE
Rm @ Meas. Temp	0.45 @ 79F
Rmf @ Meas. Temp	0.34 @ 79F
Rmc @ Meas. Temp	0.54 @ 79F
Source of Rmf / Rmc	MEASURED
Rm @ BHT	.330 @ 109F
Time Circulation Stopped	2 HOURS
Time Logger on Bottom	12:45 A.M.
Maximum Recorded Temperature	109F
Equipment Number	860
Location	HAYS, KS.
Recorded By	RUPP
Witnessed By	JEFF LAWLER

<<< Fold Here >>>

All interpretations are opinions based on inferences from electrical or other measurements and we cannot and do not guarantee the accuracy or correctness of any interpretation, and we shall not, except in the case of gross or willful negligence on our part, be liable or responsible for any loss, costs, damages, or expenses incurred or sustained by anyone resulting from any interpretation made by any of our officers, agents or employees. These interpretations are also subject to our general terms and conditions set out in our current Price Schedule.

Comments

SUPERIOR WELL SERVICES  
785-628-6395  
THANK YOU FOR YOUR BUSINESS  
DIRECTIONS: I-70 & BALTA RD., S TO C.L., E TO RD. #80, 2S, 1/8E, S INTO.

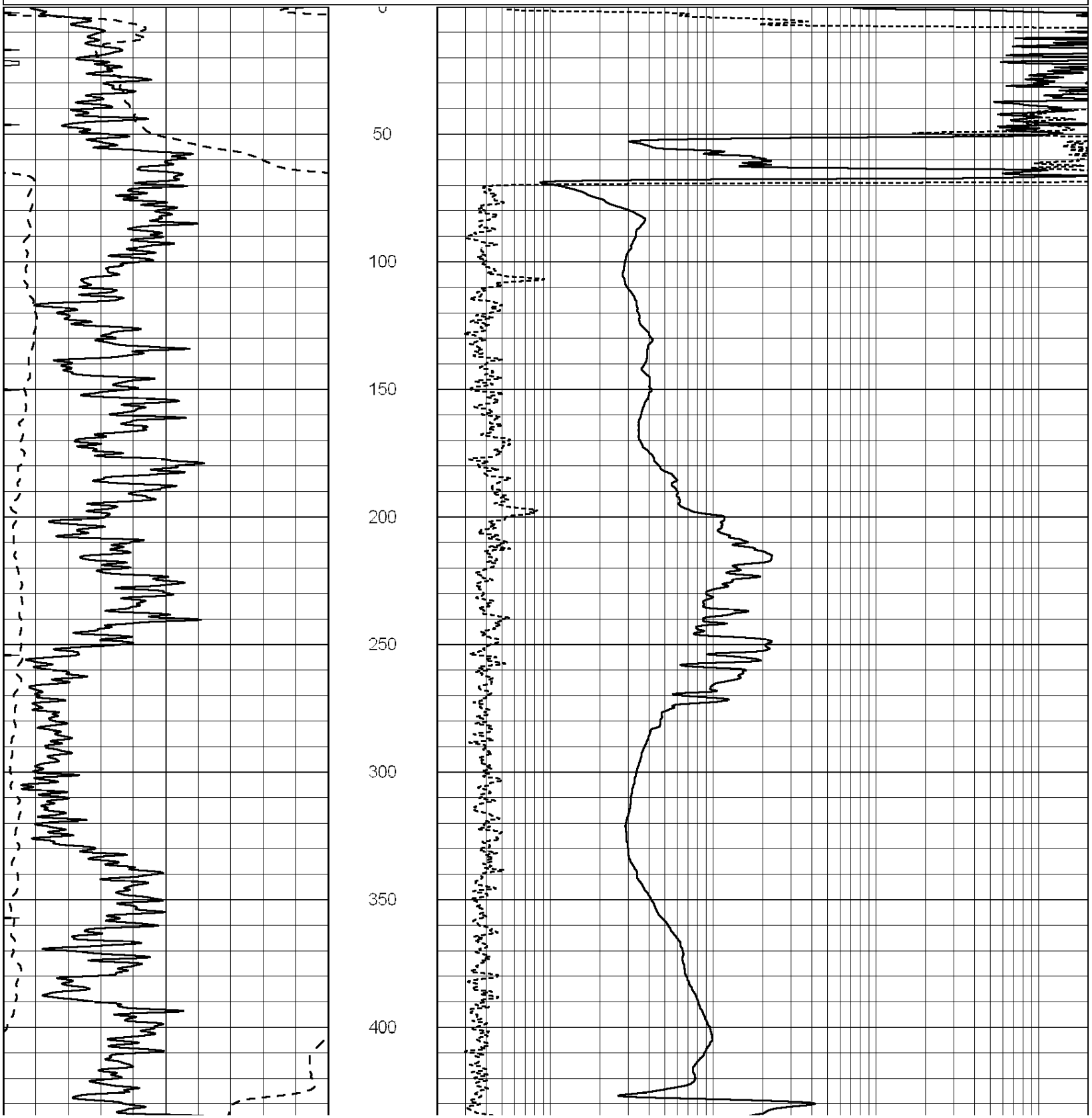


**SUPERIOR  
Hays,  
Kansas**

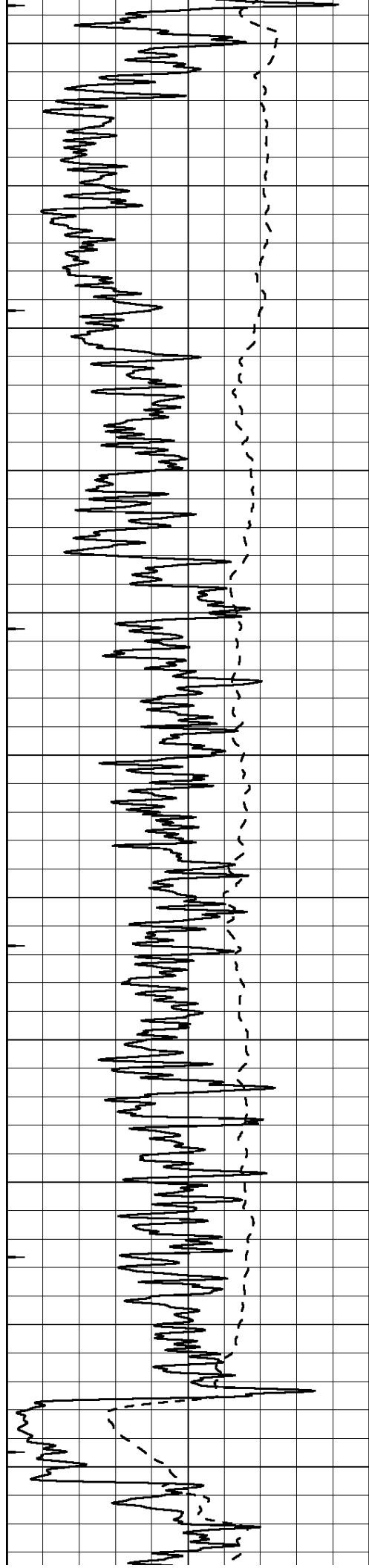
**MAIN SECTION**

Database File: 008011rag.db  
 Dataset Pathname: pass4A  
 Presentation Format: rag2  
 Dataset Creation: Thu Nov 17 02:07:21 2011  
 Charted by: Depth in Feet scaled 1:600

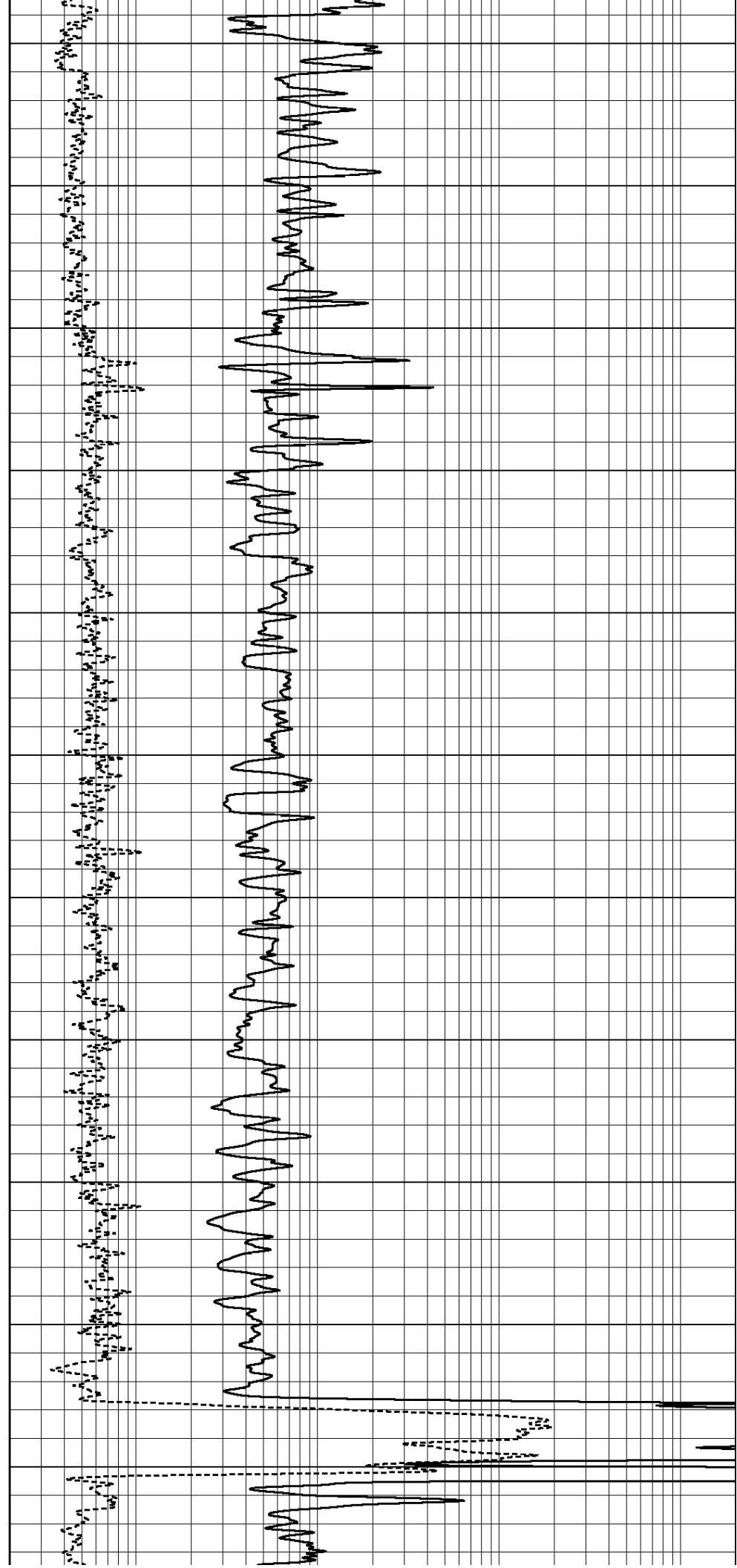
0	GAMMA RAY (GAPI)	150	ABHV (ft3)	0.2	GUARD (Ohm-m)	2000
-100	SP (mV)	100		0	NEUTRON (NAPI)	1000
-----			TBHV (ft3)	-----		

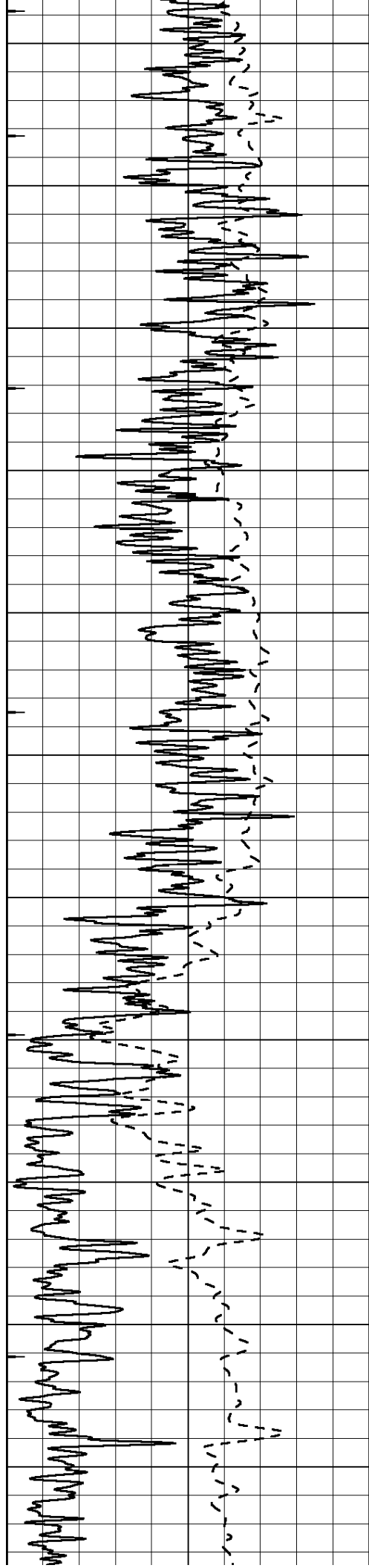






450  
500  
550  
600  
650  
700  
750  
800  
850  
900  
950





1000

1050

1100

1150

1200

1250

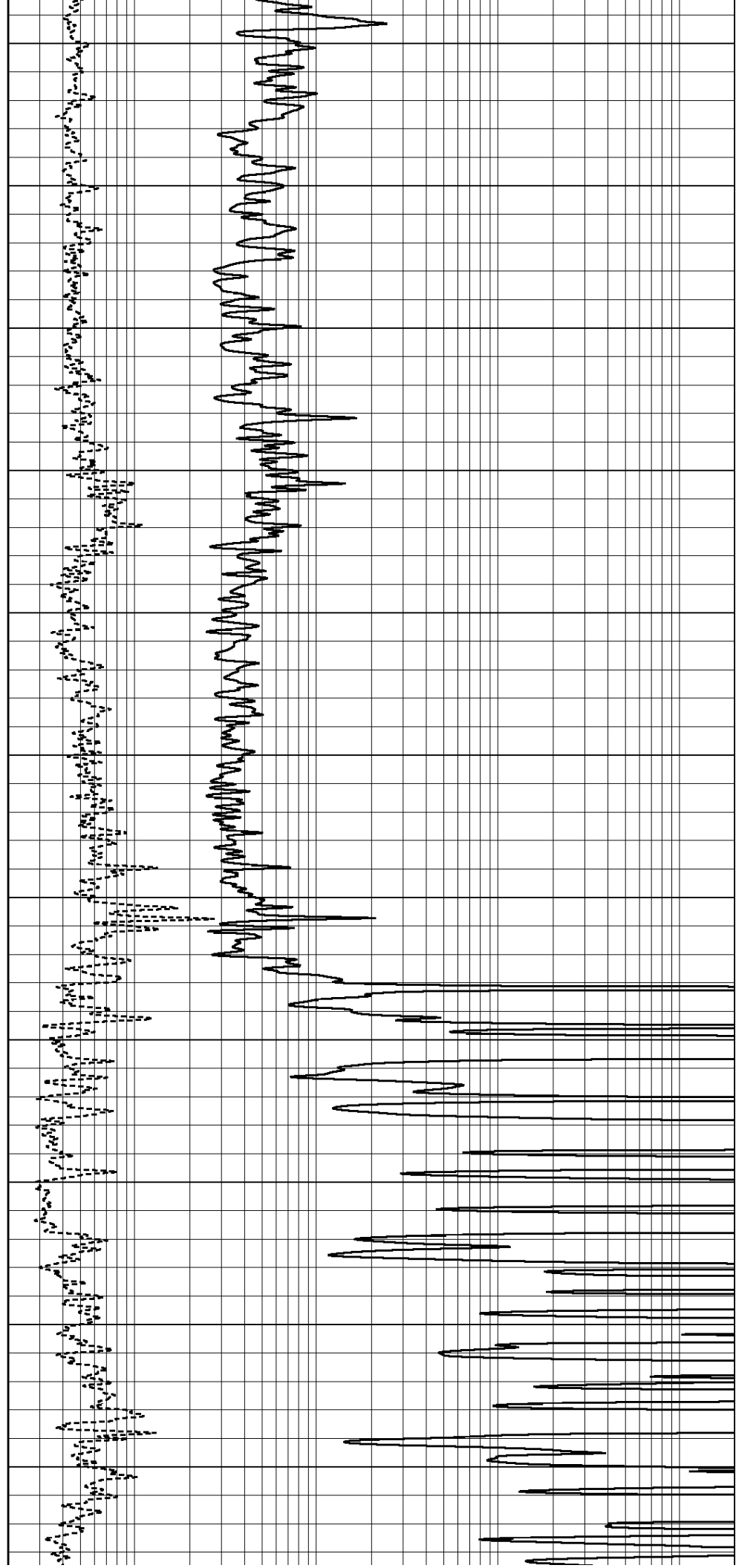
1300

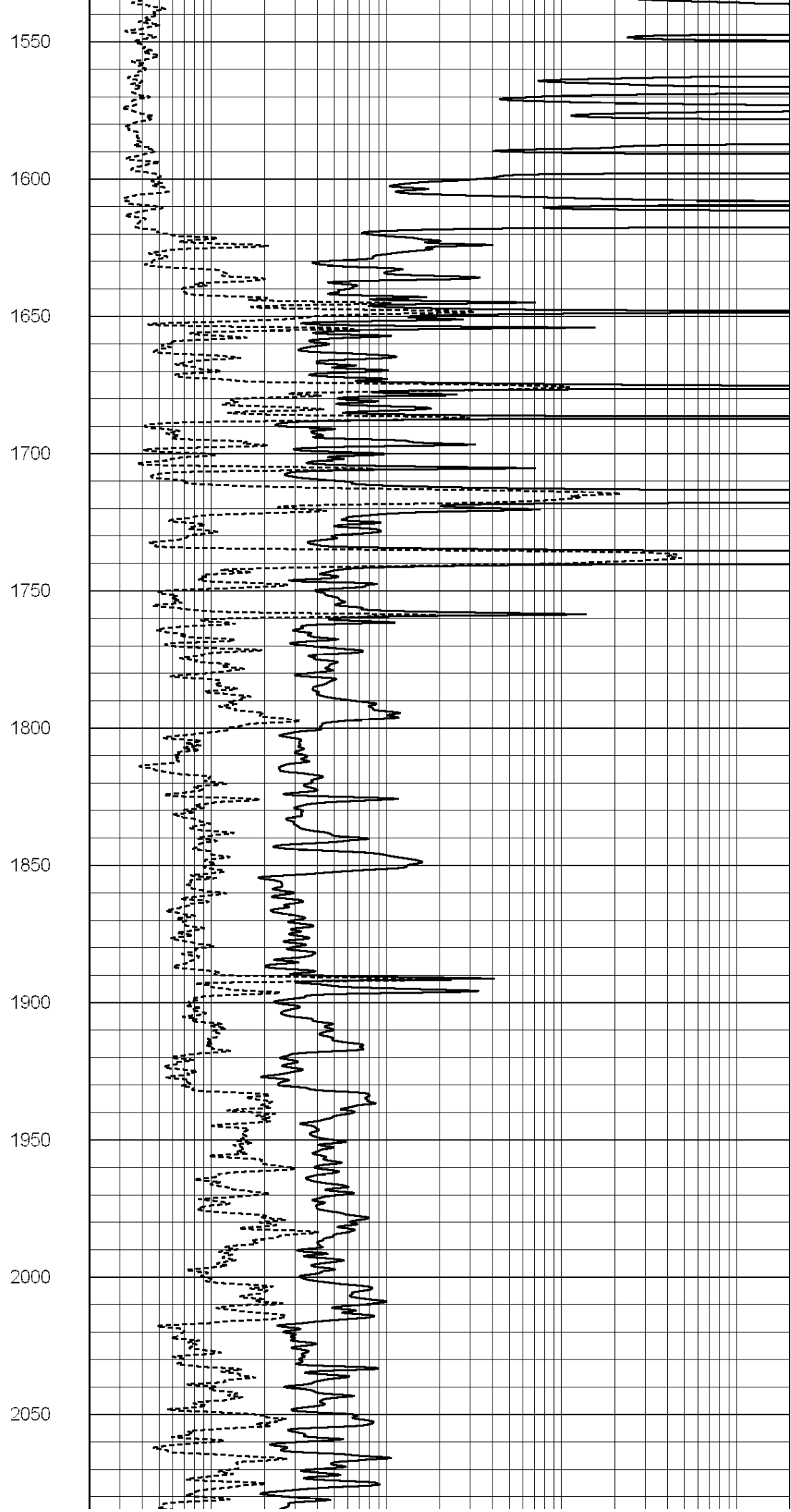
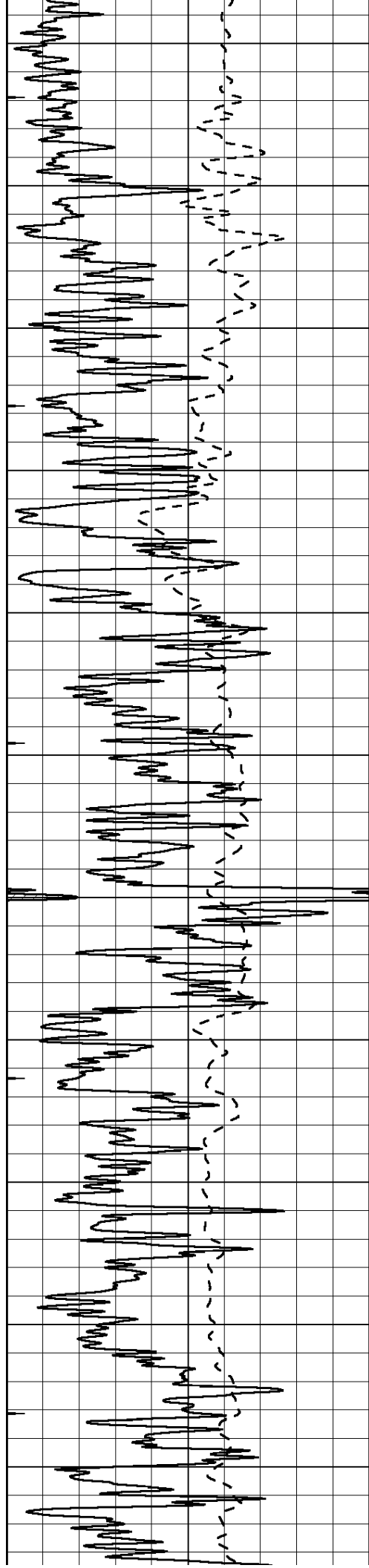
1350

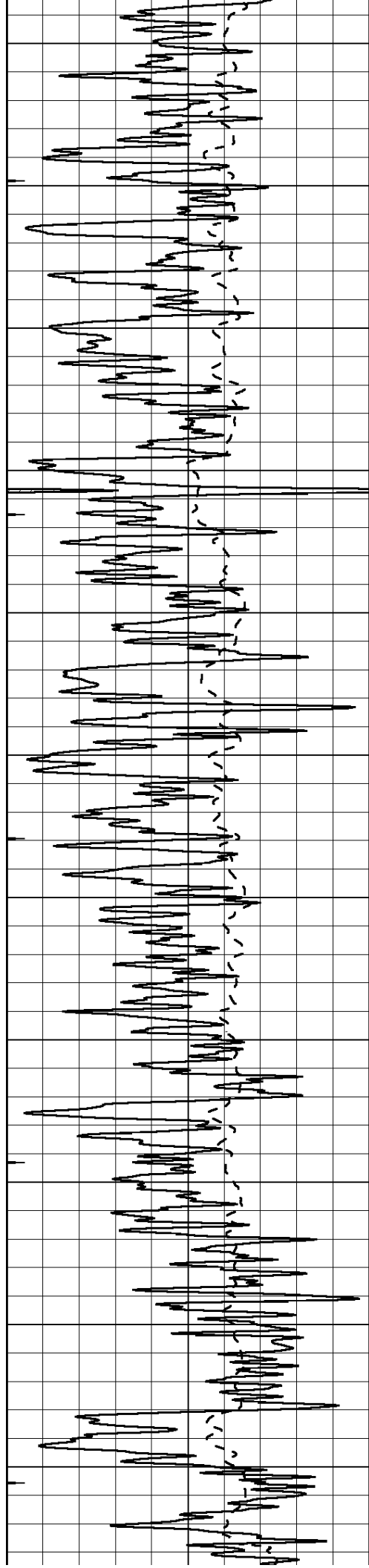
1400

1450

1500







2100

2150

2200

2250

2300

2350

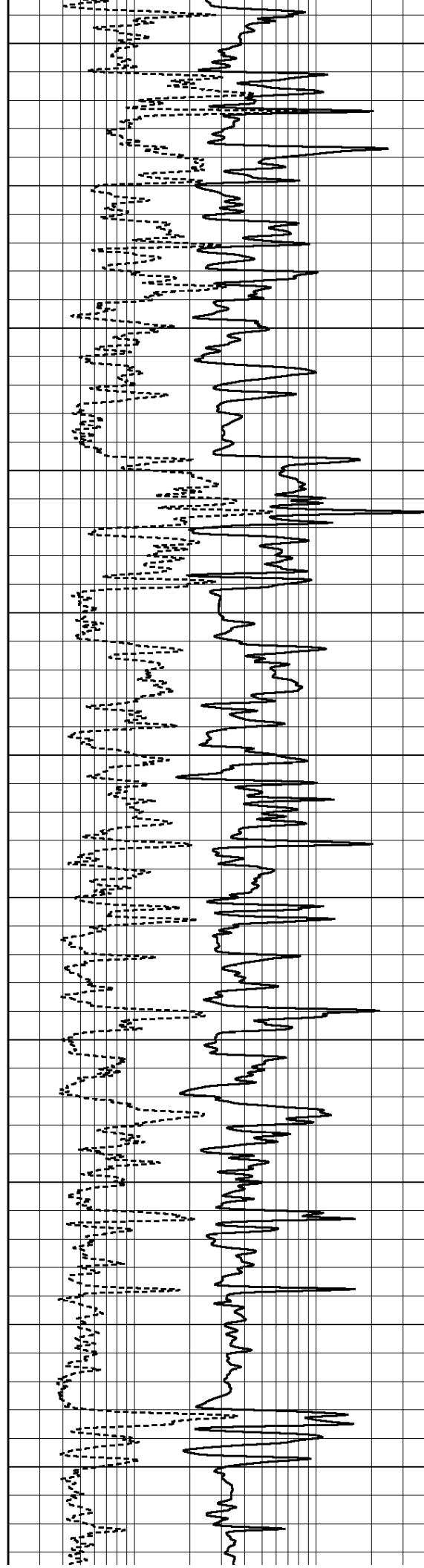
2400

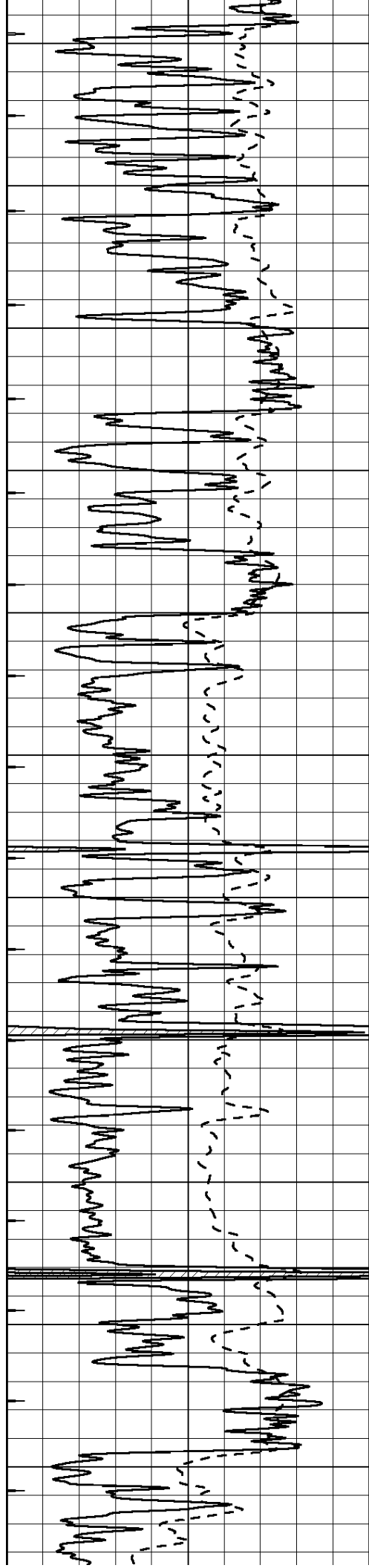
2450

2500

2550

2600





2650

2700

2750

2800

2850

2900

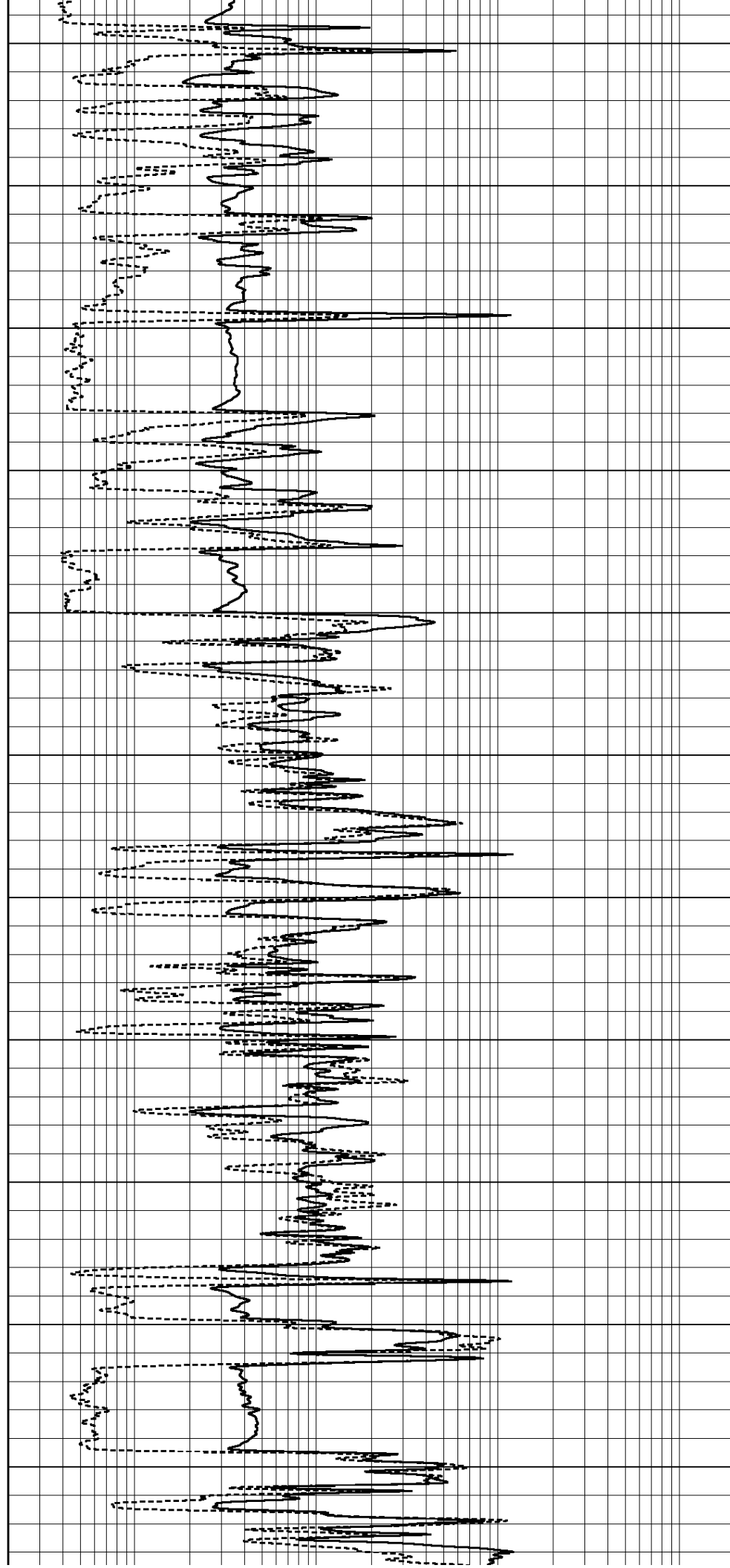
2950

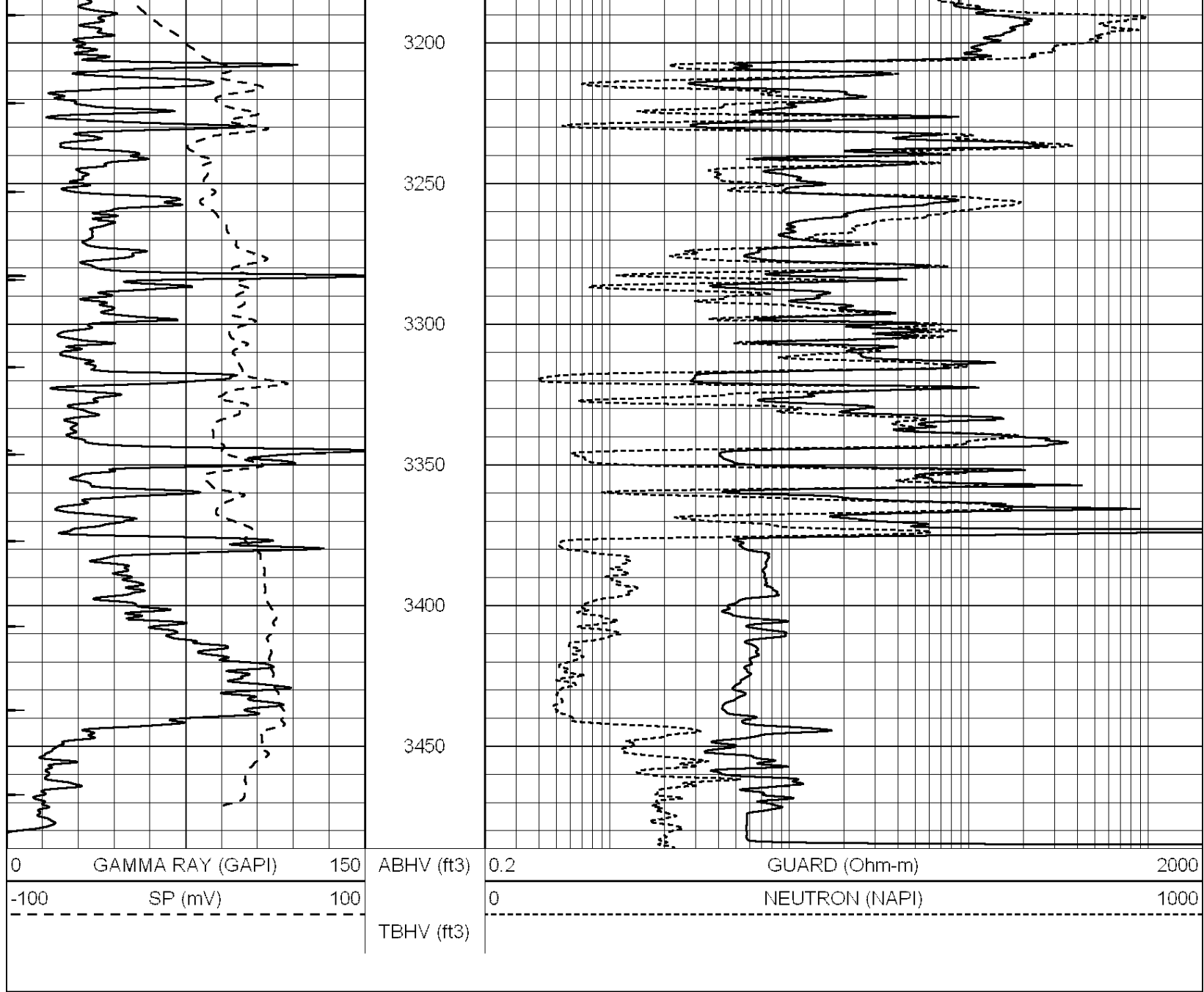
3000

3050

3100

3150

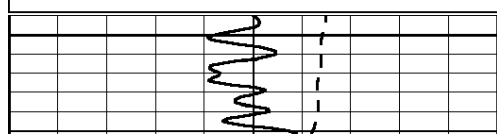
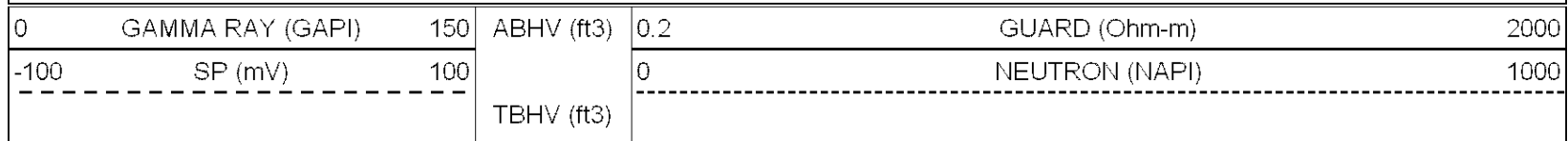




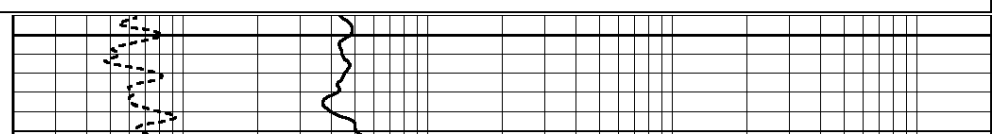
**SUPERIOR**  
**Hays,**  
**Kansas**

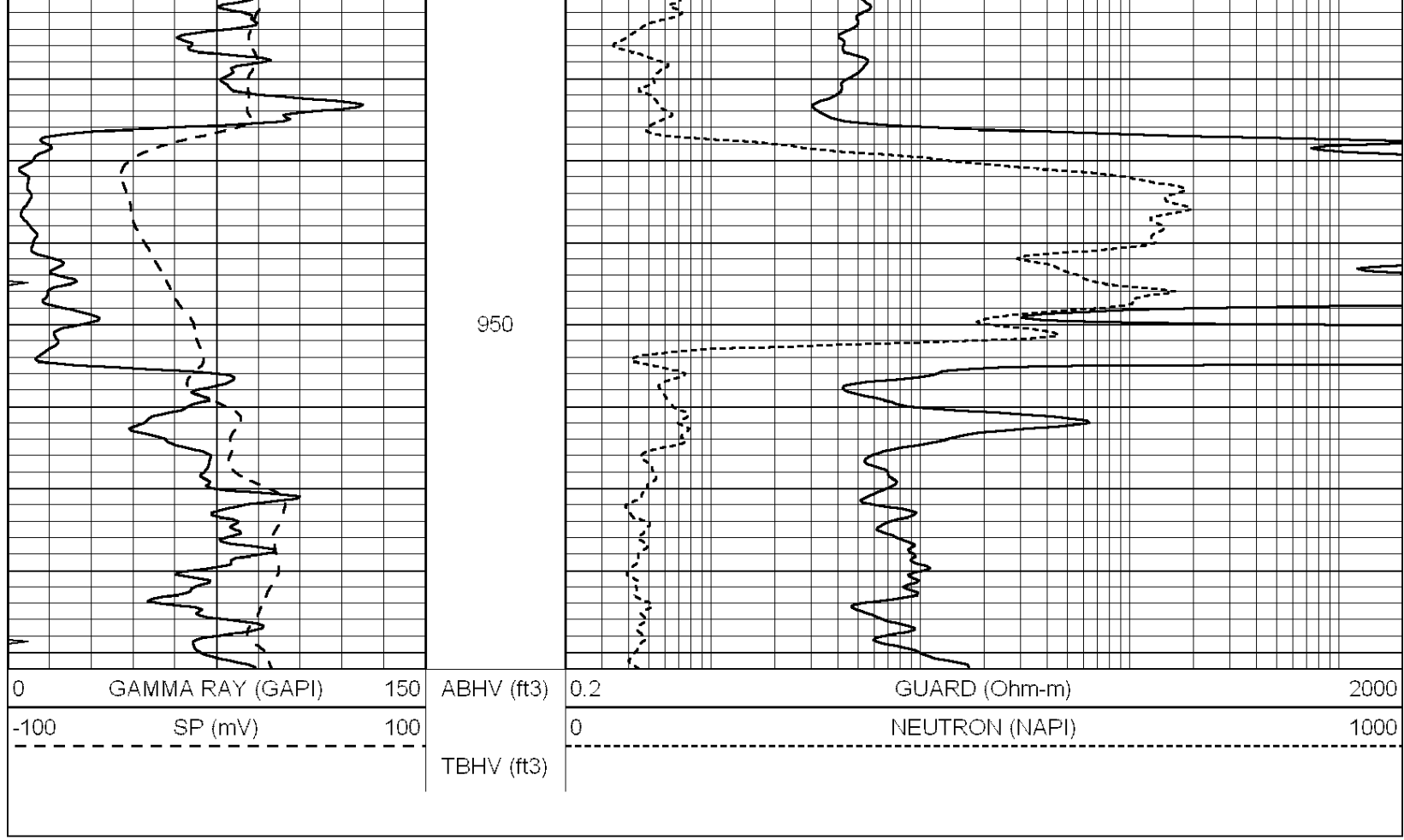
# MAIN SECTION

Database File: 008011rag.db  
 Dataset Pathname: pass4A  
 Presentation Format: rag2  
 Dataset Creation: Thu Nov 17 02:07:21 2011  
 Charted by: Depth in Feet scaled 1:240



900

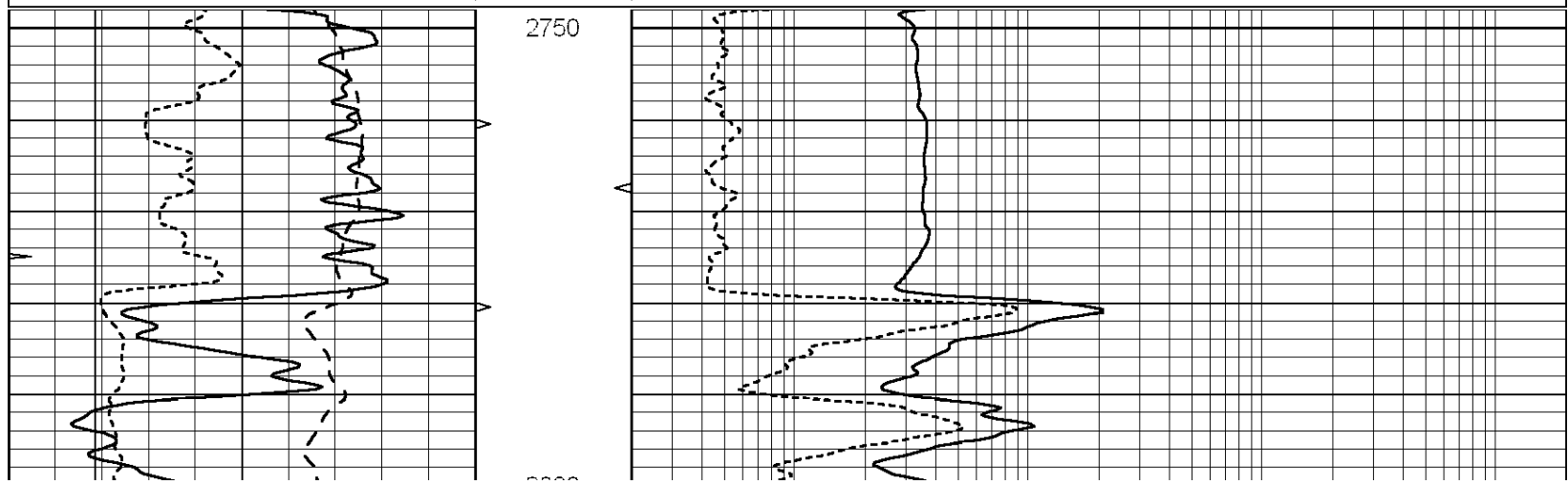
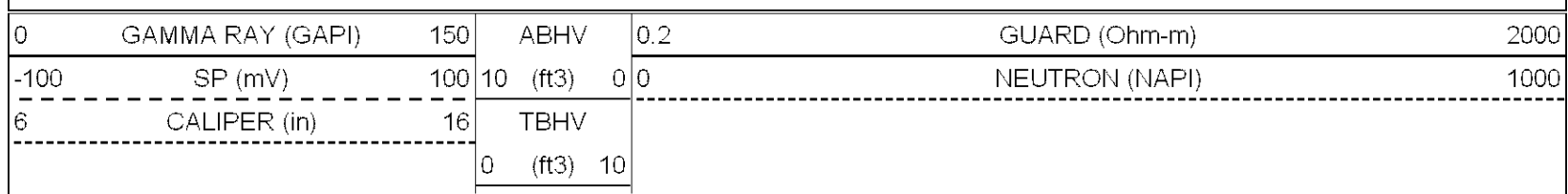


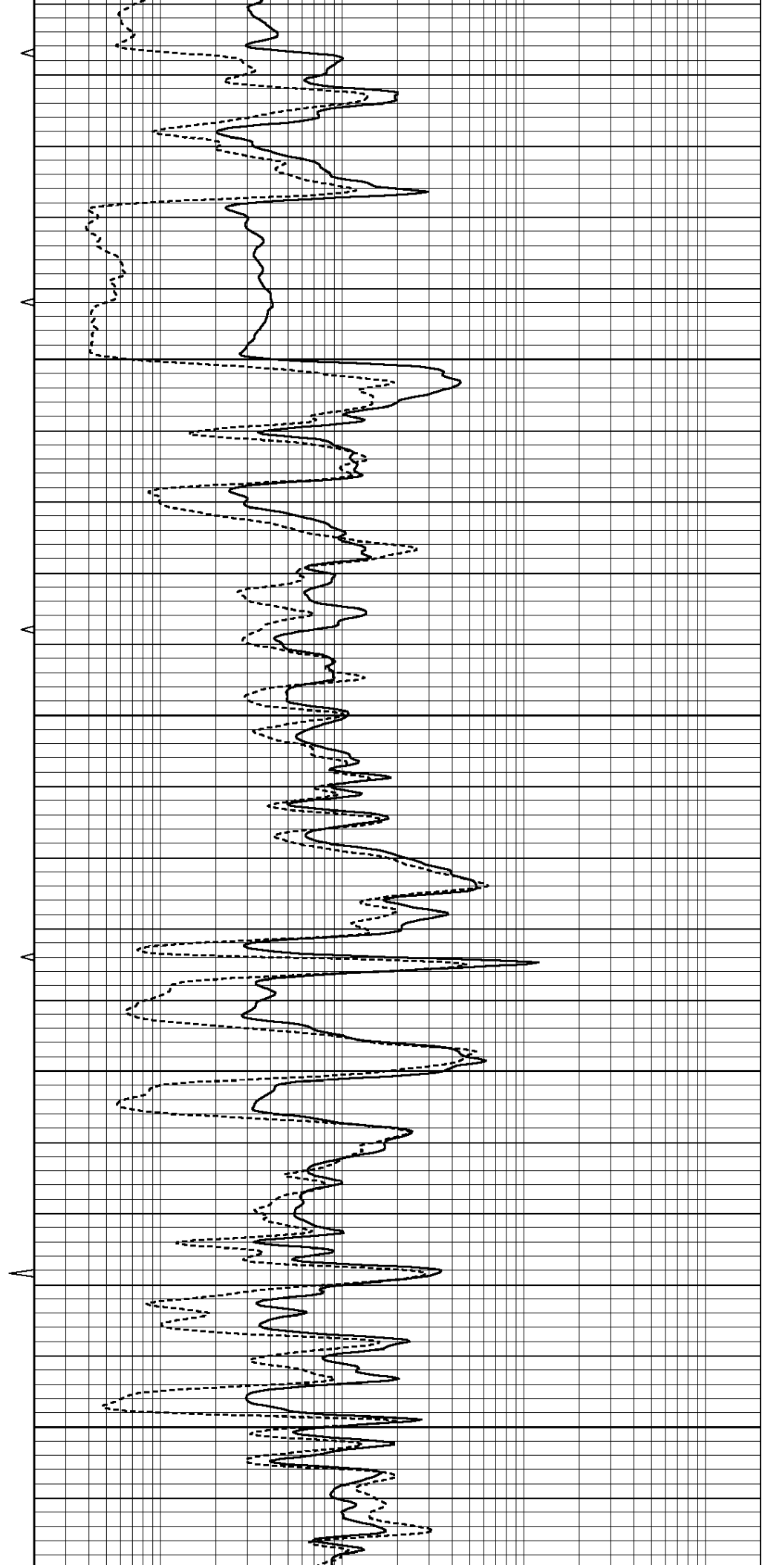
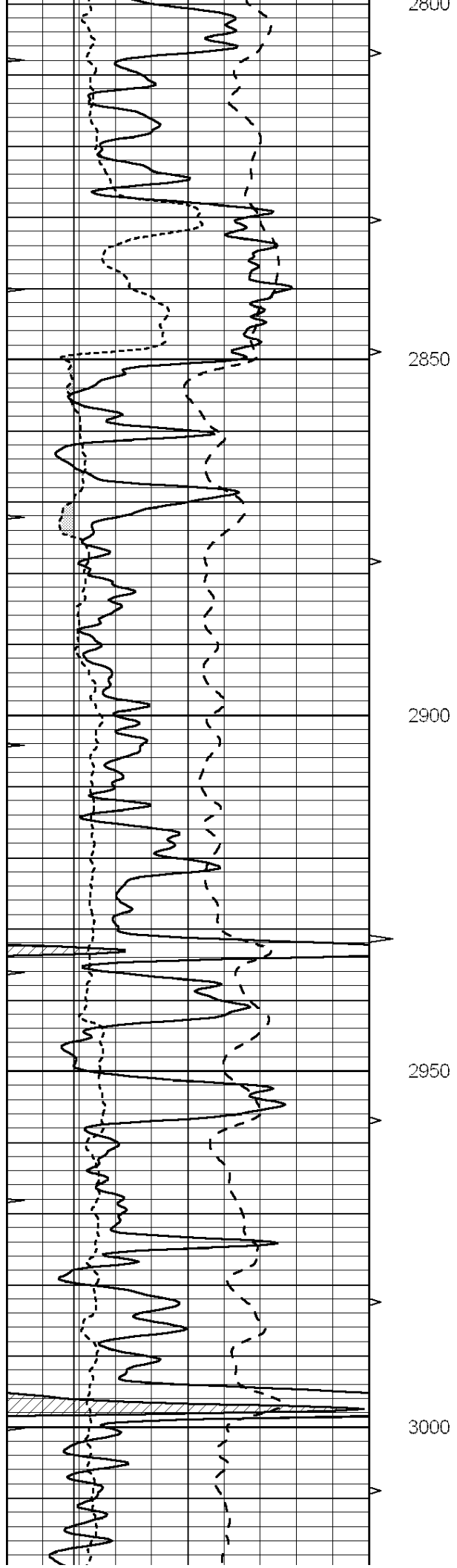


SUPERIOR  
Hays,  
Kansas

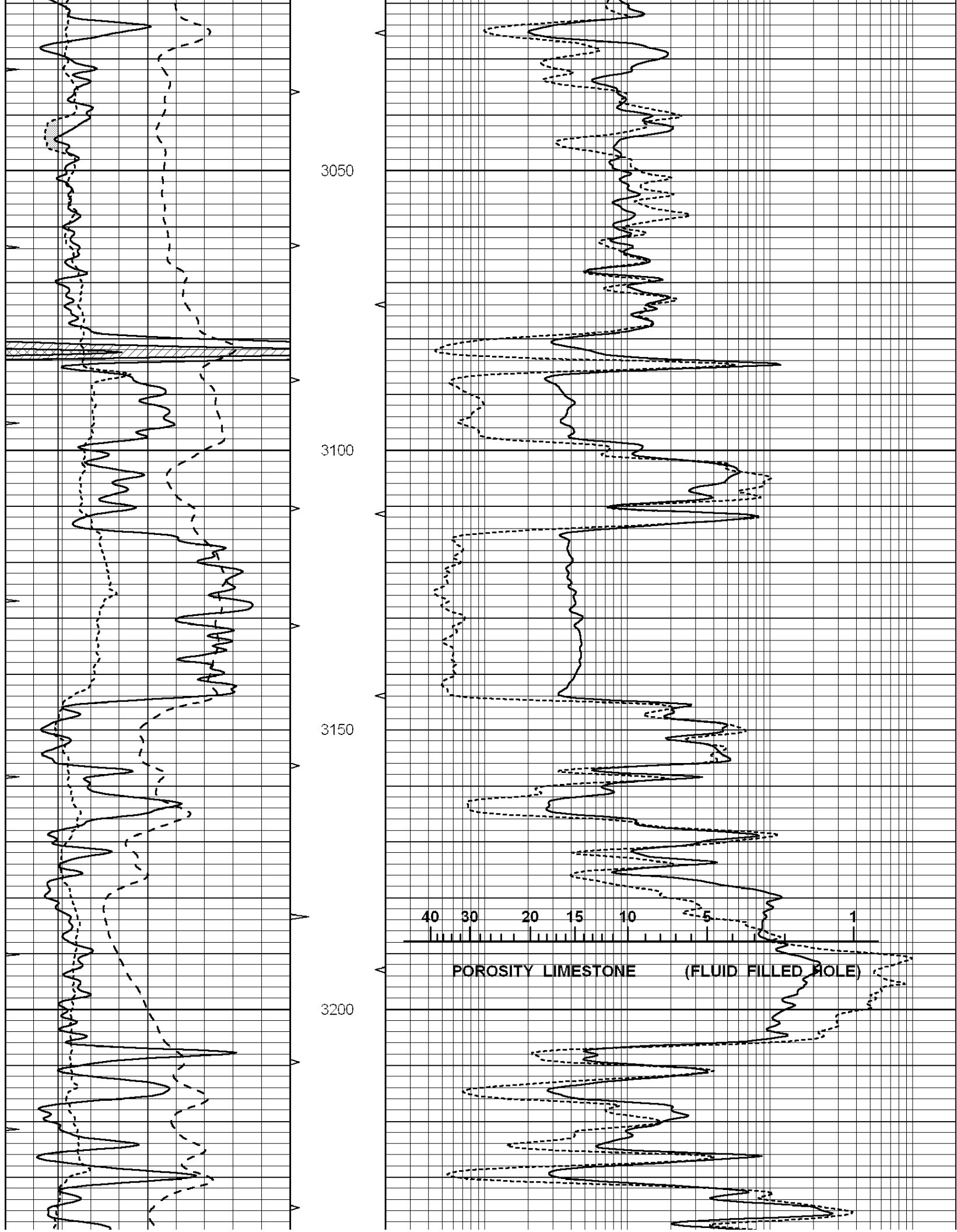
# MAIN SECTION

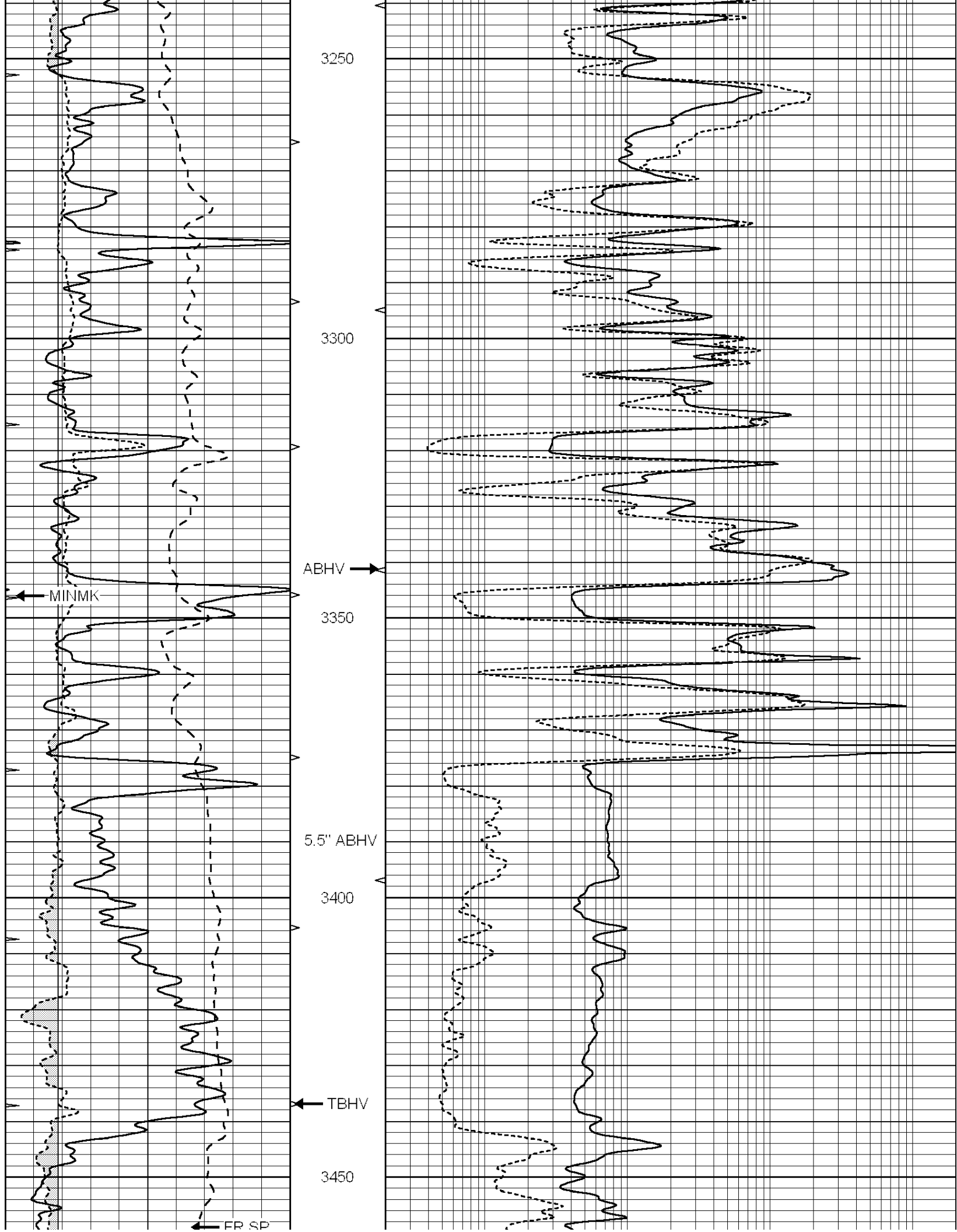
Database File: 008011rag.db  
 Dataset Pathname: pass4A  
 Presentation Format: rag  
 Dataset Creation: Thu Nov 17 02:07:21 2011  
 Charted by: Depth in Feet scaled 1:240

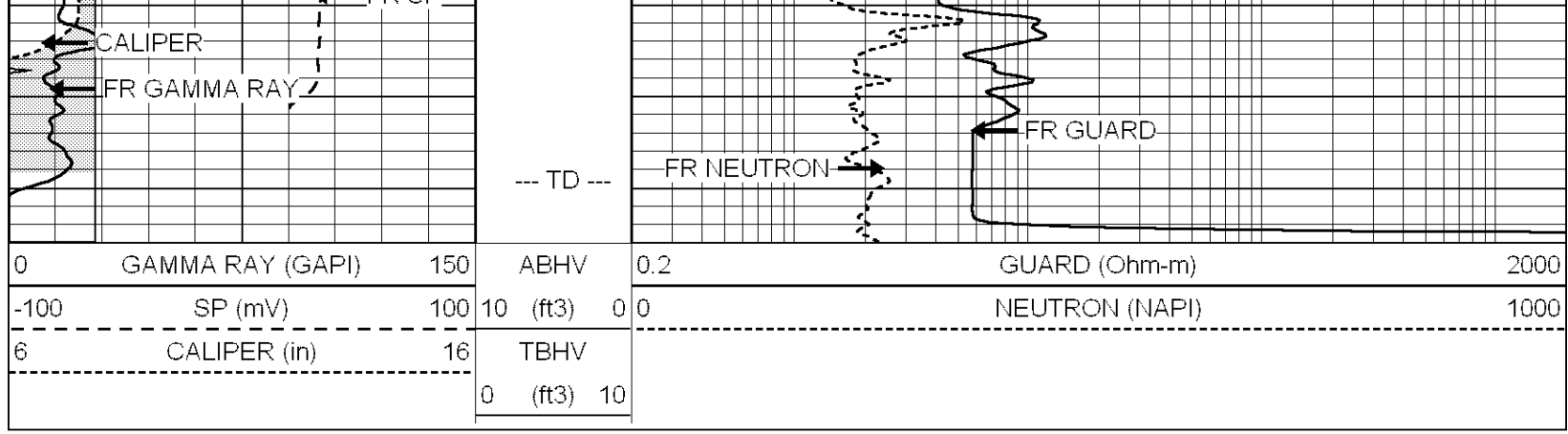




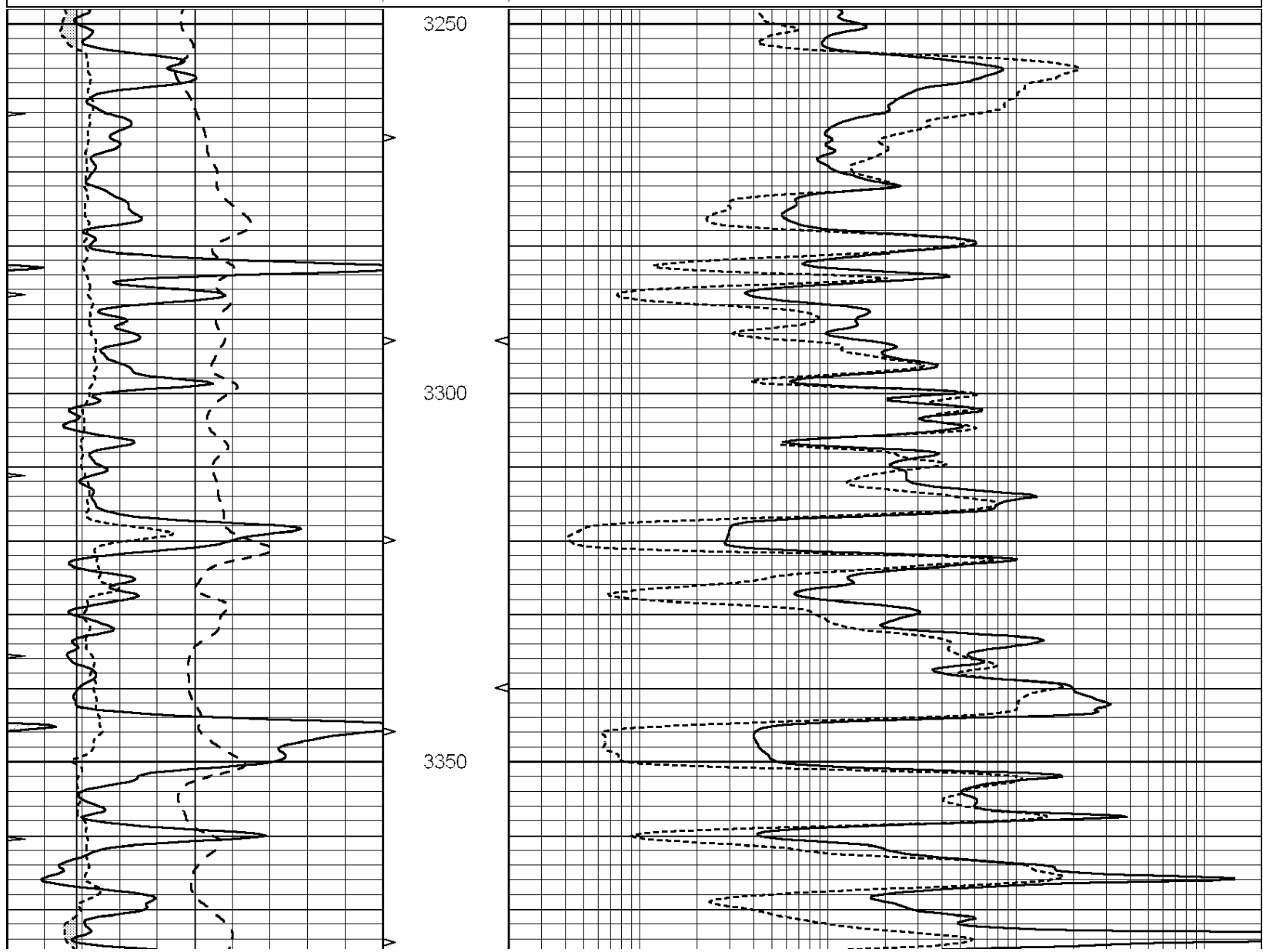
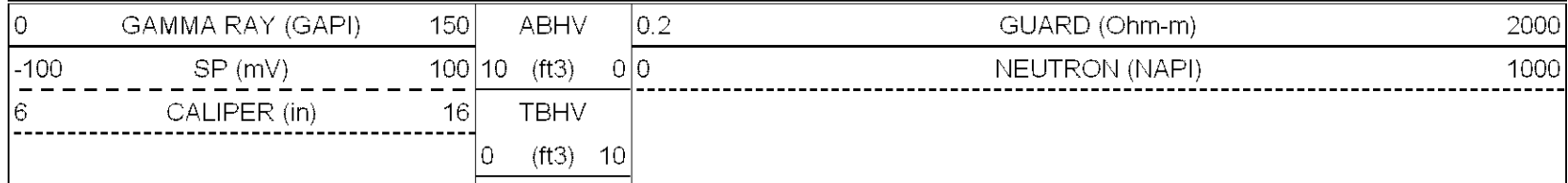


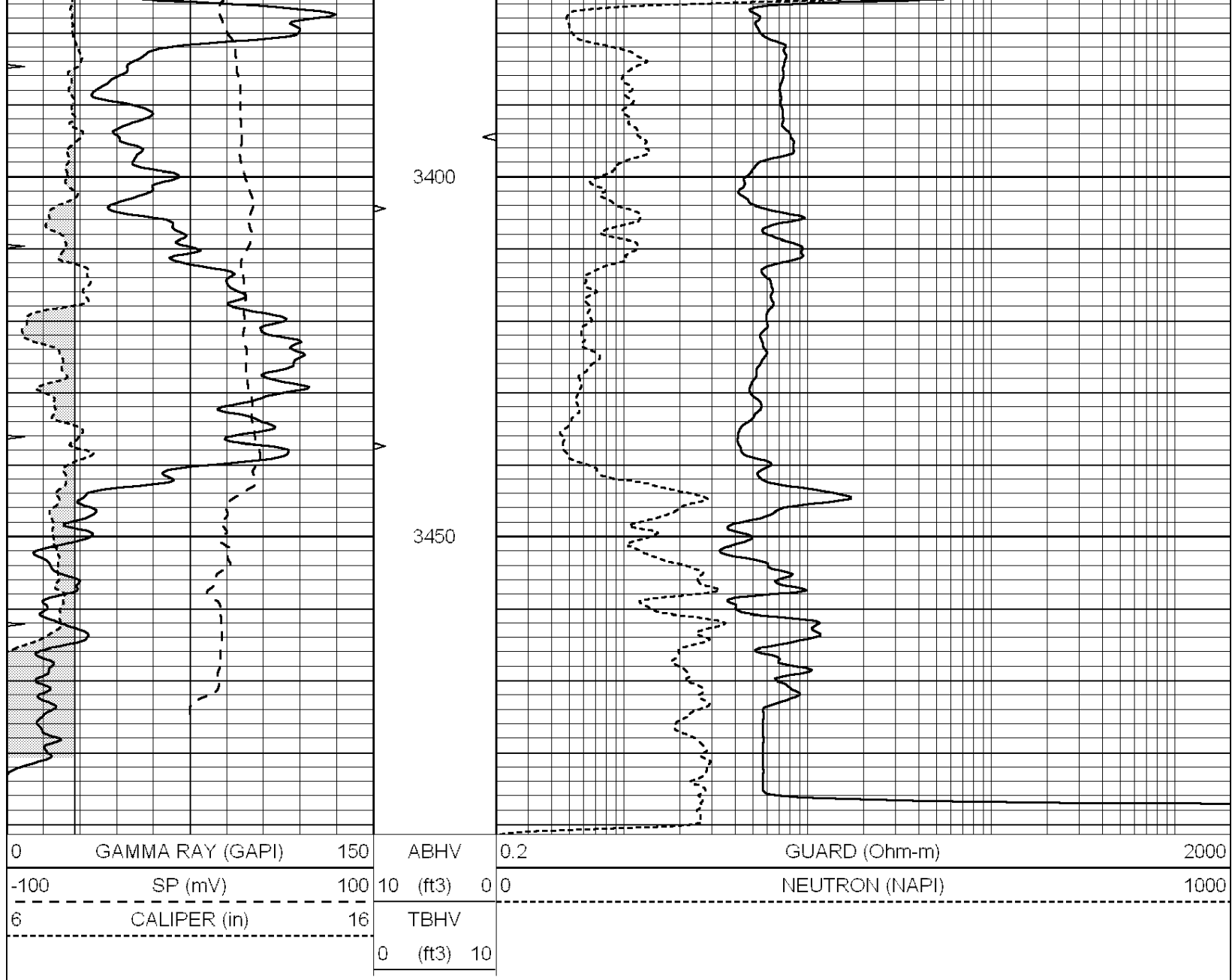






Database File: 008011rag.db  
 Dataset Pathname: pass3.A  
 Presentation Format: rag  
 Dataset Creation: Thu Nov 17 01:23:56 2011 by Calc Open-Cased 090629  
 Charted by: Depth in Feet scaled 1:240





### Calibration Report

Database File: 008011rag.db  
 Dataset Pathname: pass4A  
 Dataset Creation: Thu Nov 17 02:07:21 2011

### Neutron Calibration Report

Serial Number: RAG1  
 Tool Model: RAG  
 Performed: Thu Nov 17 00:59:59 2011

Calibrator Values:	0	1	NAPI
Calibrator Readings:	0	1	cps

Sensitivity: 1.6 NAPI/cps

### Micro Spherically Focused Log Calibration Report

Serial-Model: RAG1-A  
 Performed: Thu Nov 17 00:24:38 2011

#### Readings

Low      High

#### References

Low      High

#### Results

m      b

Conductivity	0.0110	0.9000	V	10.0000	1000.0000	mmho	1800.0000	-5.0000
Caliper	0.2401	0.3178	V	9.0000	17.0000	in	102.9630	-15.7255

Gamma Ray Calibration Report

Serial Number:	RAG1		
Tool Model:	RAG		
Performed:	Wed Nov 16 23:05:59 2011		
Calibrator Value:	1.0	GAPI	
Background Reading:	0.9	cps	
Calibrator Reading:	1.0	cps	
Sensitivity:	1.8000	GAPI/cps	