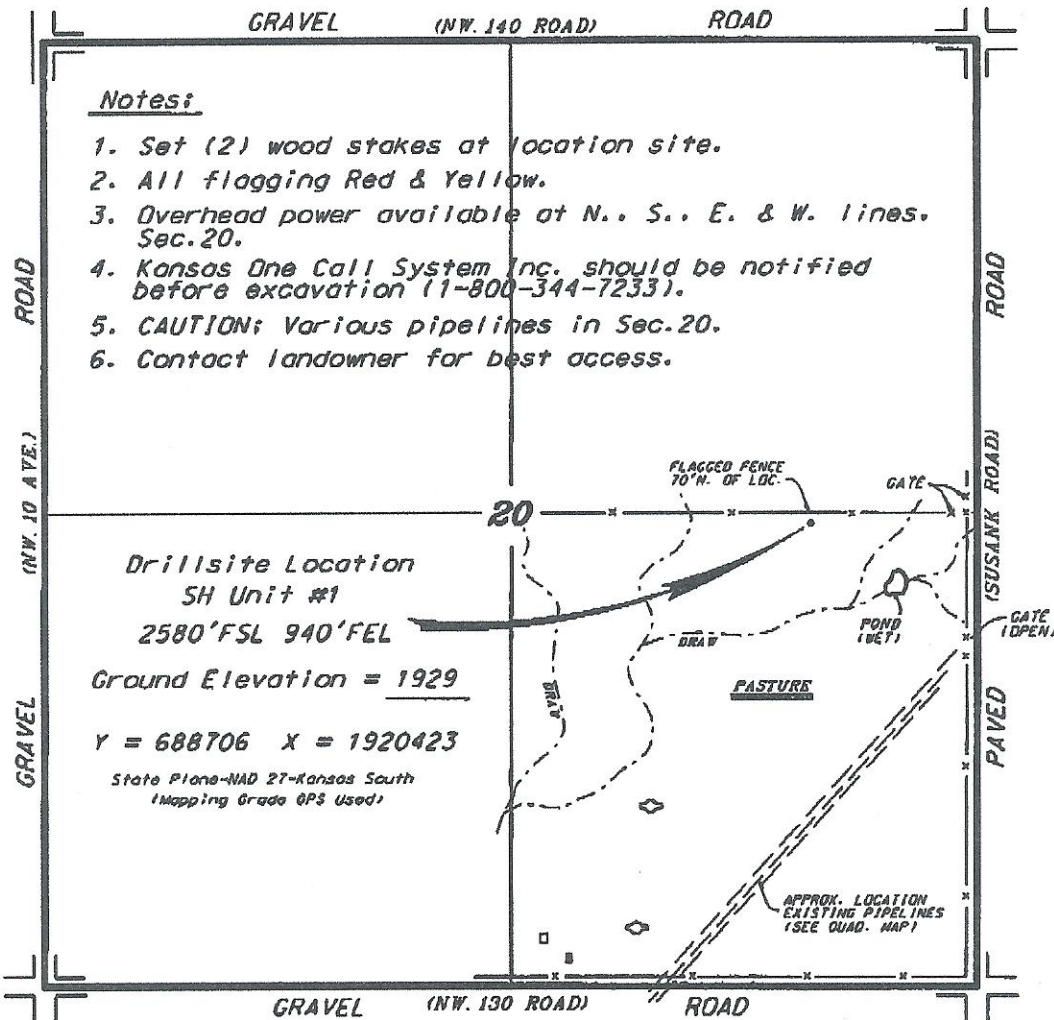


SHELBY RESOURCES, LLC/CAPTIVA II, LLC
SH UNIT LEASE
E. 1/2, SECTION 20, T17S. R13W
BARTON COUNTY, KANSAS



Notes:

1. Set (2) wood stakes at location site.
2. All flagging Red & Yellow.
3. Overhead power available at N., S., E. & W. lines. Sec. 20.
4. Kansas One Call System Inc. should be notified before excavation (1-800-344-7233).
5. CAUTION: Various pipelines in Sec. 20.
6. Contact landowner for best access.

Drillsite Location
SH Unit #1
2580' FSL 940' FEL

Ground Elevation = 1929

Y = 688706 X = 1920423

State Plane-NAD 27-Kansas South
 (Mapping Grade GPS Used)

ingress and egress to location as shown on this plan is for public use. Contact landowner, tenant and county road department for access.



• Contouring data is based upon the best maps and photographs available to us and upon a regular section of land containing 640 acres.
 • Approximate section lines were determined using the normal standard of care of oilfield surveyors practicing in the state of Kansas. The section corners, which establish the precise section lines, were not necessarily located, and the exact location of the drillsite location in the section is not guaranteed. Therefore, the operator securing this service and operating this site and all other parties relying thereon agree to hold Central Kansas Oilfield Services, Inc., its officers and employees harmless from all losses, costs and expenses and hold entities released from any liability from inclusion or consequential damage.
 • Elevations derived from National Geodetic Vertical Datum.

Date October 26, 2011

CENTRAL KANSAS OILFIELD SERVICES, INC. (620)792-1977