



Woolsey Operating Company, LLC

Scale 1:240 (5"=100') Imperial

Measured Depth Log

Well Name: Weckworth #5
Location: SE-SW-NW-SW Section 9 T35S-R12W
License Number: API: 15-007-23729-00-00
Spud Date: July 14, 2011
Surface Coordinates: 1615' FSL & 495' FEL Section 9 T35S-R12W
Region: Barber Co, KS
Drilling Completed: July 26, 2011

Bottom Hole
Coordinates:
Ground Elevation (ft): 1414' K.B. Elevation (ft): 1425'
Logged Interval (ft): 4700 To: TD Total Depth (ft): 4537
Formation: Pawnee to McLish Shale
Type of Drilling Fluid: Chemical Displaced at 3400'

Printed by WellSight Log Viewer from WellSight Systems 1-800-447-1534 www.WellSight.com

OPERATOR

Company: Woolsey Operating Company, LLC
Address: 125 N. Market, Suite 1000
Wichita, KS 67202

GEOLOGIST

Name: Roger L. Fisher
Company: Consulting Geologist
Address: 1928 N. Garland
Wichita Kansas, 67203

COMMENTS

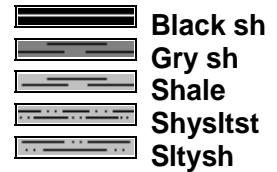
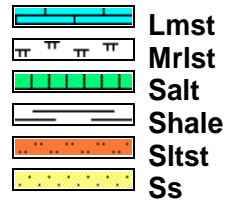
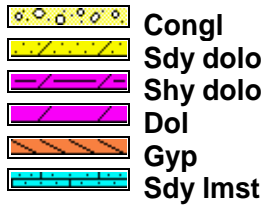
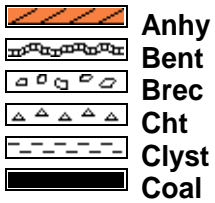
Surface Casing: 224' of 10 3/4", 906' of 8 5/8"
Production Casing: 5437' of 5 1/2"
Duke Rig #10
Gas Detector: Woolsey Operating Lab
Mud System: Mud Co
OH Logs: Superior Wireline; DILL, CDL/CNL/PE,

Note: Log Depths

DSTs

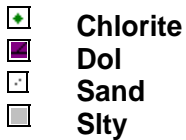
DSTs

ROCK TYPES

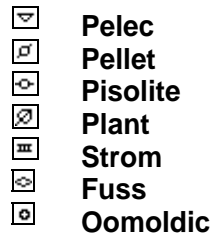
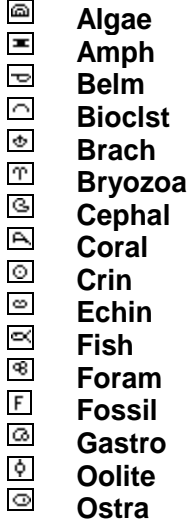


ACCESSORIES

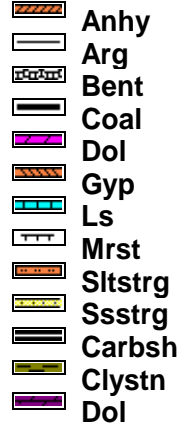
MINERAL



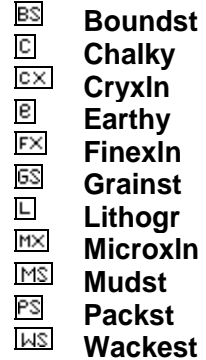
FOSSIL

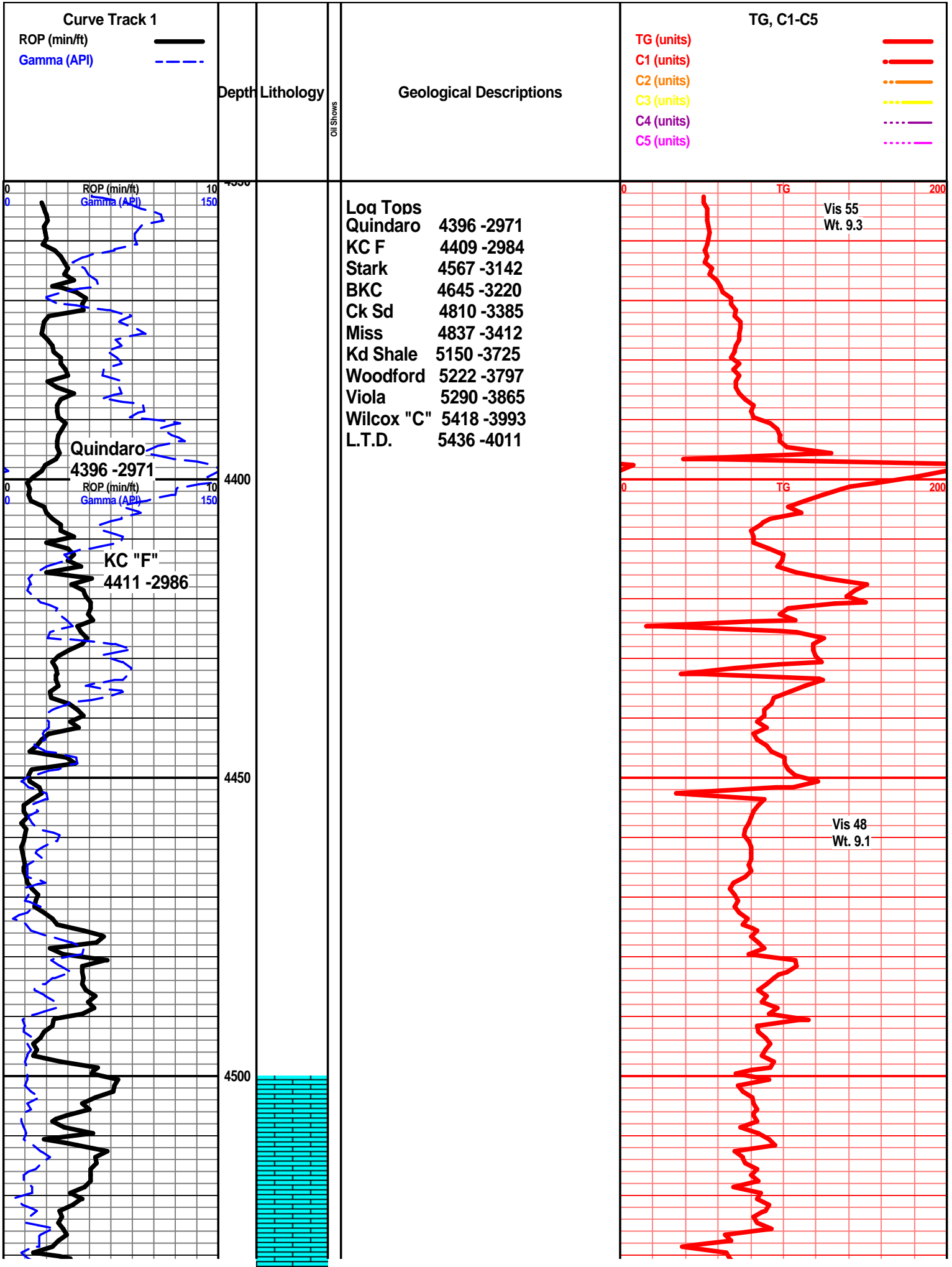


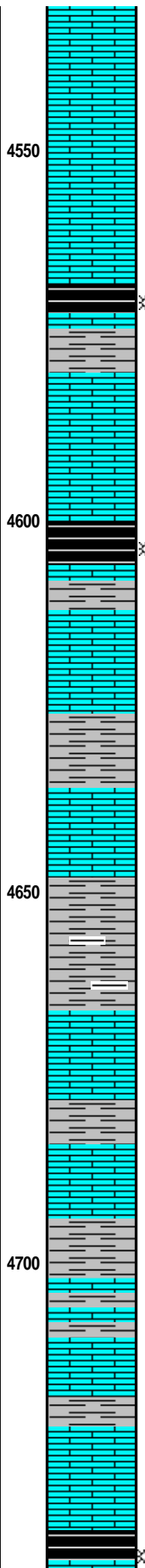
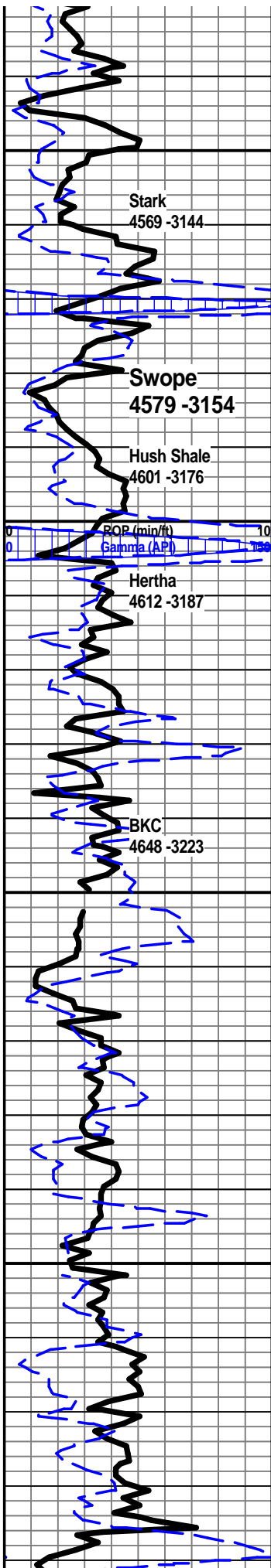
STRINGER



TEXTURE







Shale black carb gas bubbles shale gray dark gray

Ls light gray to dark tan foss ool fossil fragments subchalky slightly cherty gray tan clear sharp fresh fair inter foss porosity

Ls light gray to dark tan fxl dense slightly foss poor int xln porosity

Shale black carb gas bubbles

Ls creamy light gray f-mxln subchalky slightly foss fossil frag chert clear white tan

Shale light to med gray light green black silty some calc

Ls light gray tan vfxln dense foss trace chert shale as above light to med gray

Shale light to dark gray light green calc silty some arg light brown chert fragments clear white tan

Ls light gray fxl subchalky to dense foss fair inter foss porosity cherty

Shale light to med gray light green waxy calc

Ls tan gray vfxln dense slightly foss poor porosity

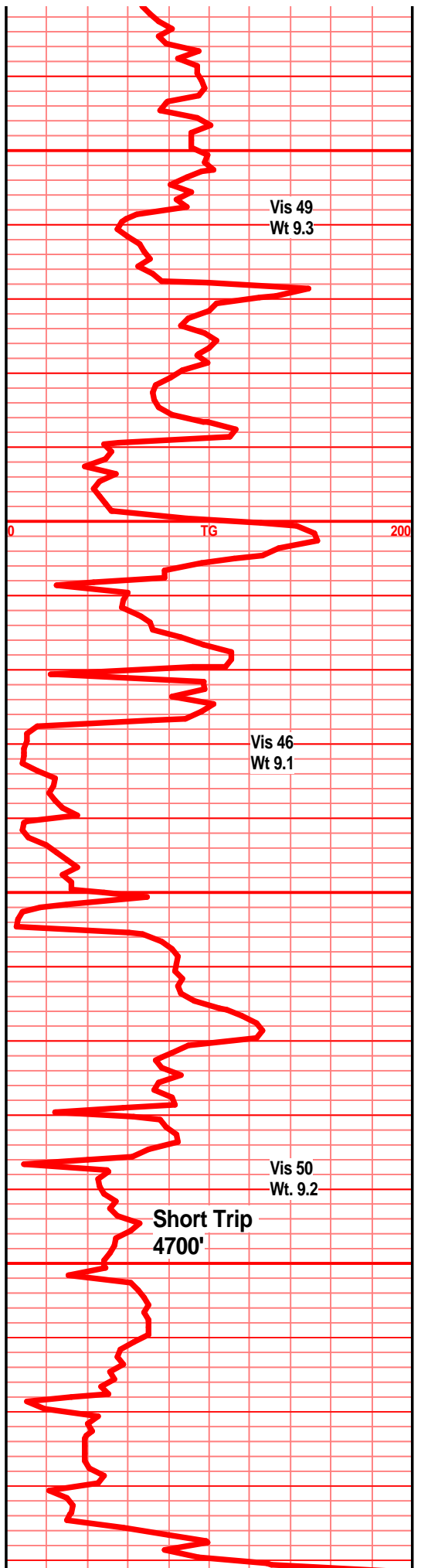
Shale light to med gray light green

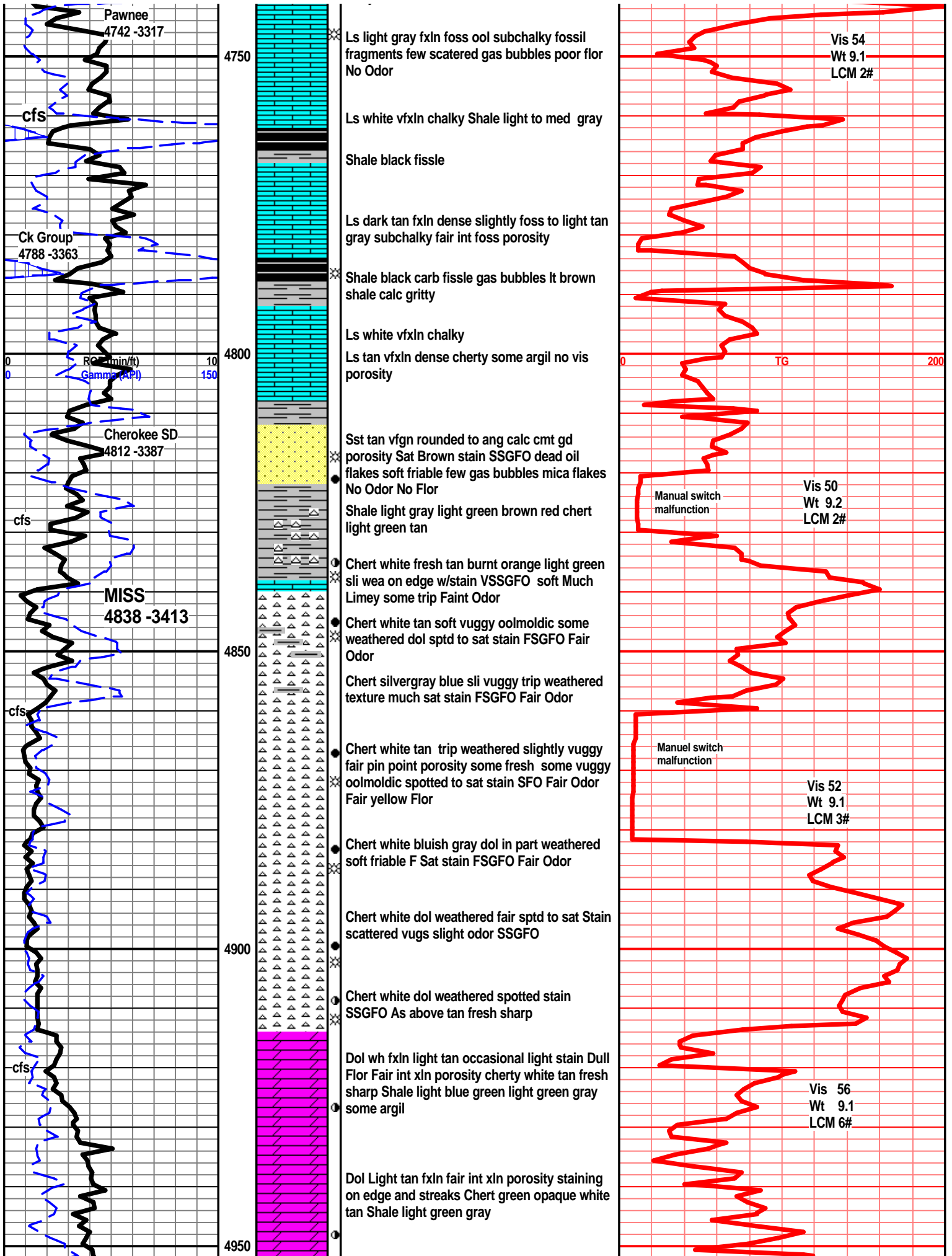
Ls light tan vfxln subchalky foss poor int foss porosity cherty

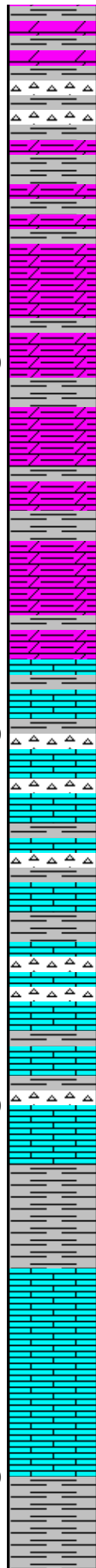
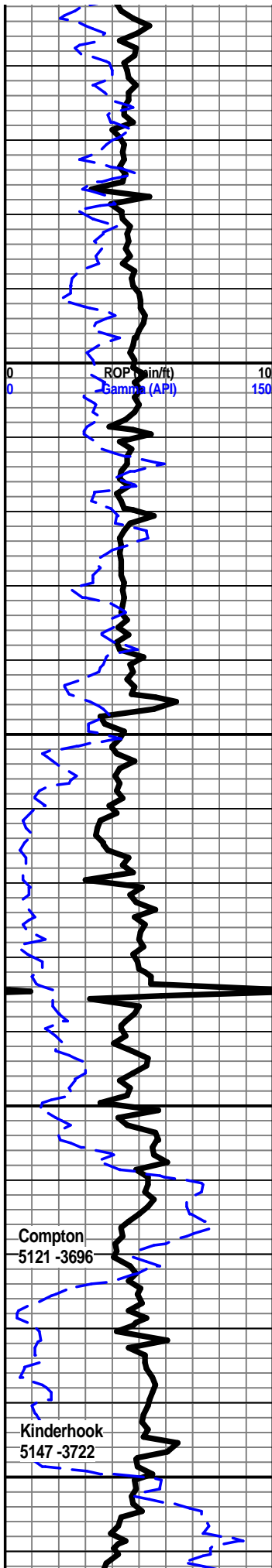
Ls light tan vfxln dense foss some recrystal chert frag

Ls dark tan vfxln dense slightly foss shale gray light green

Shale black carb gas bubbles med to dark gray waxy fissile







Shale light gray light green light tan calc some argil foss loose chert white opaque sharp fresh

Dol light tan fxln sandy Shale light to med gray light green calc some argil

Abundance of Shale light to med gray calc some light green chert white tan sharp fresh Dol light tan fxln

Dol light tan fxln Much Shale light to med gray light green black calc Chert frag white tan opaque fresh sharp N.S.

Dol as above light tan fxln chert fragments Shale light to med gray light green brown siltstone

Ls white fxln to mxln some cxln chert white tan opaque Shale light to med gray brown black

Ls shale and chert as above

Ls white to light tan f-mxln chalky to dense sli foss Chert white tan fresh Shale light to med gray light green soft

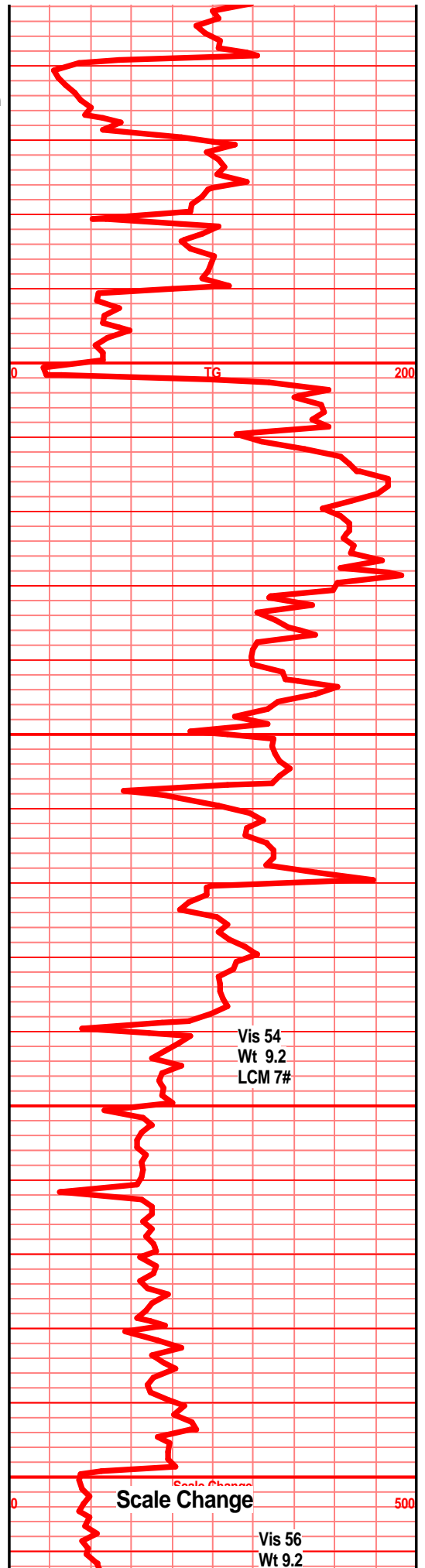
Ls light gray to tan fxln some mxln

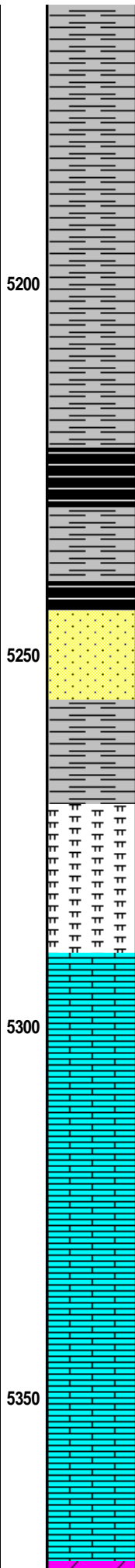
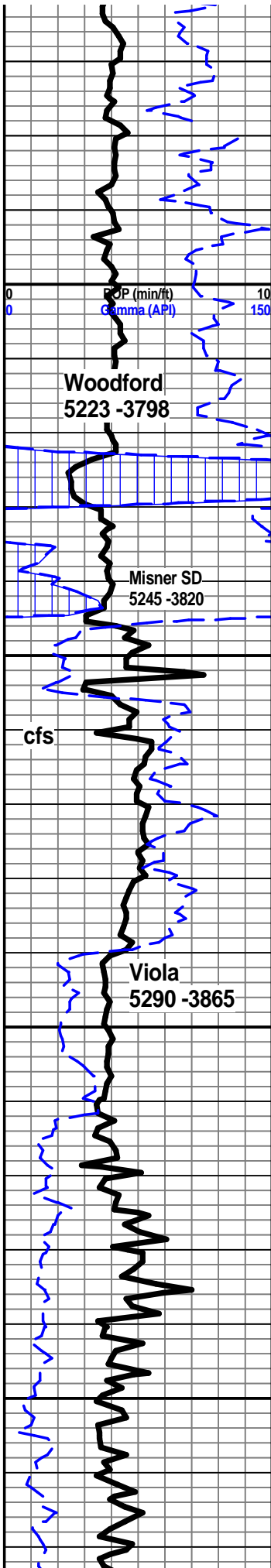
Shale Light green to light gray

Ls white fxln chalky

Ls white off white light gray fxln dense

Shale med to dark gray





Shale med to dark gray

Shale med to dark gray

Shale Black reddish brown carb waxy gasy

Shale dark brownish red light green gritty pyrite firm

Sst clear slightly frosted fine grain some med subangular well cmted si trace calcite cmt friable gd inter gran por TR FO No Odor

Sst light gray increasing calcite cmt poor porosity poor yellow flor No odor

Ls/Marl lt greenish gray microxn soft friable subchalky Shale light green silty sandy soft

Ls/Mar light green gray brown sandy gritty in part

Ls micro-xln light tan dense slightly mottled some off-wh Dol fxln subchalky w/fair int xln porosity

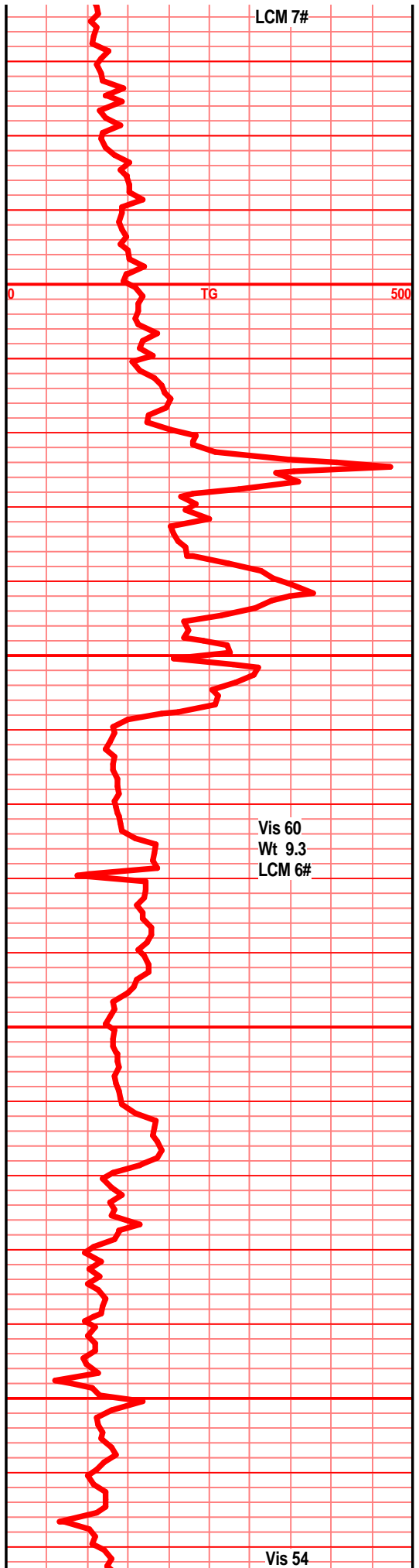
Ls off white to gray vfxln soft friable subchalky some dense

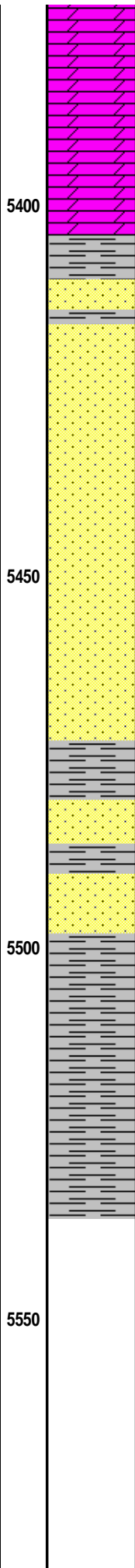
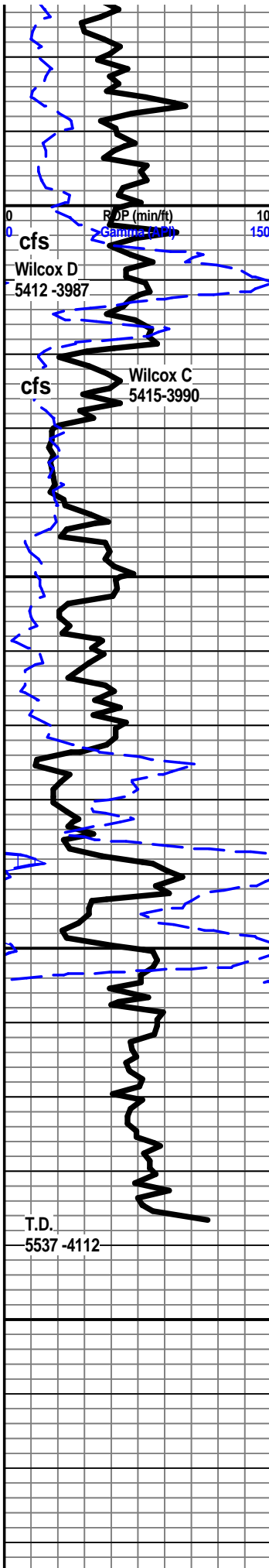
Ls light gray vfxln chalky few dense slightly mottled slightly cherty gray fresh sharp

Ls off white f-mxln slightly cherty mottled subchalky pyrite fair int xln porosity

Ls light tan vfxln dense some subchalky scattered fair int xln porosity slightly cherty tan sharp fresh

Ls light tan vfxln abundance of chert tan sharp fresh shale light green gray brown





Dol fxltn tan fxltn subchalky white Shale light green gray brown

Dol light tan fxltn sandy v fine gn hard chery in part white poor pin point porosity Sat Stain VSSFO No Odor

Dol light tan vfgrain sandy friable

Shale blue green pyrite waxy soft

Sst light gray clear f-med grain sub ang cal cmt friable N.S.

SSt white light gray f-m grain ang to rounded Fair int gn por pyrite friable light spotted stain VSSFO No Odor or gas

SSt white light gray to clear f-m grain subangular to rounded friable gd int grain porosity shale inclusions N.S.

Sst as above and tan fine grain rd to sub angular sub friable shale inclusions gd inter grain porosity trace oil film

Sst tan fine grain compact well cmtd Shale inclusions

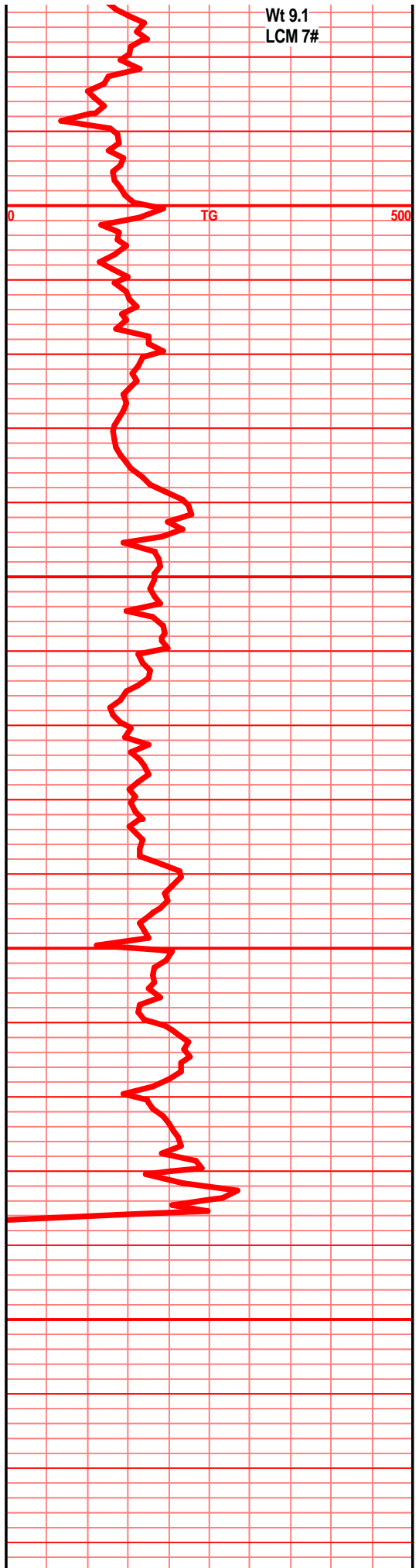
Shale blue green

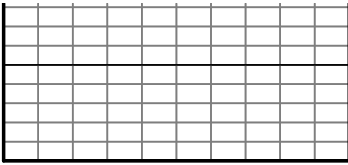
Sst white vfine grain some dol friable to firm pyrite subangular to rounded

McLish Shale 5503 4078

Shale bluish-gray pyrite

Shale gray bluish-gray pyrite





500

