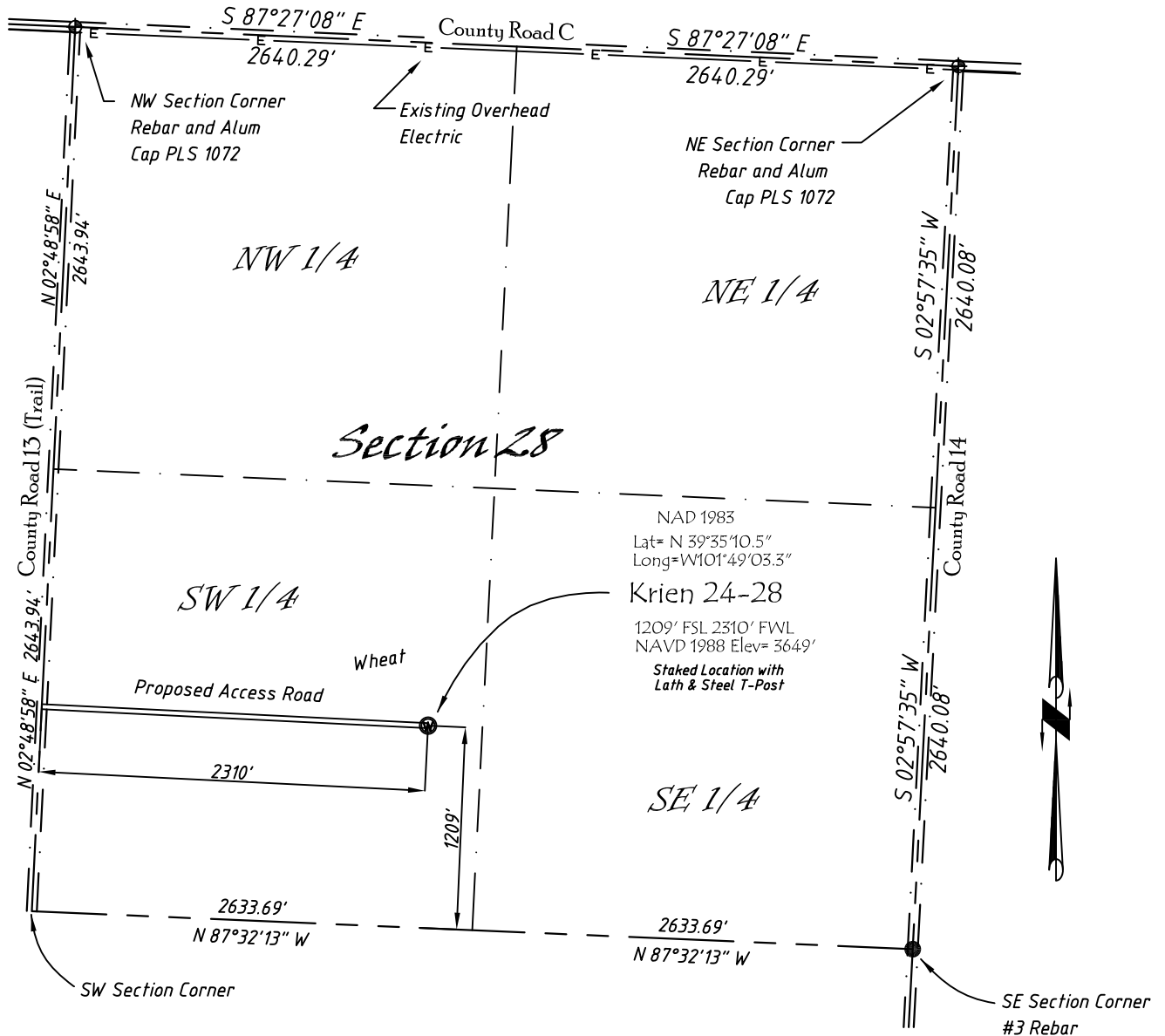


Well Location Map

# Krien 24-28

SE 1/4, SW 1/4, Section 28, T5S, R40W, 6th P.M. Cheyenne County, Kansas  
 1209' FSL - 2310' FWL Elev=3649'



Note: No electrical lines, pipelines or tank batteries are currently planned for this location.

Copyright © 2011

Directions:

From the Intersection of County Road 14 (River Street) & Hwy 36 @ St. Francis, KS Go S on River St. turns into County Rd 14 Approximately 12 miles, to County Road C, then W 1 mile to County Road 13 (Trail), Then S 0.8 Miles, then E 2310' to Staked location.

*This Drawing is for Construction Purposes Only*

Noble Energy, Inc.		
<b>DRAWN</b> SP	<b>DATE</b> 11/2/11	Section 28 T5S, R40W, 6th P.M. Cheyenne County, KS
<b>FB</b> B77P30 B74P21	<b>EQ</b> HiPro	
<b>SCALE</b> 1"=1000'	<b>SHEET</b> 1 of 1	<b>PROJECT NO.</b> 1570.176



402 Walnut  
 Kanorado, KS  
 785/399/2551