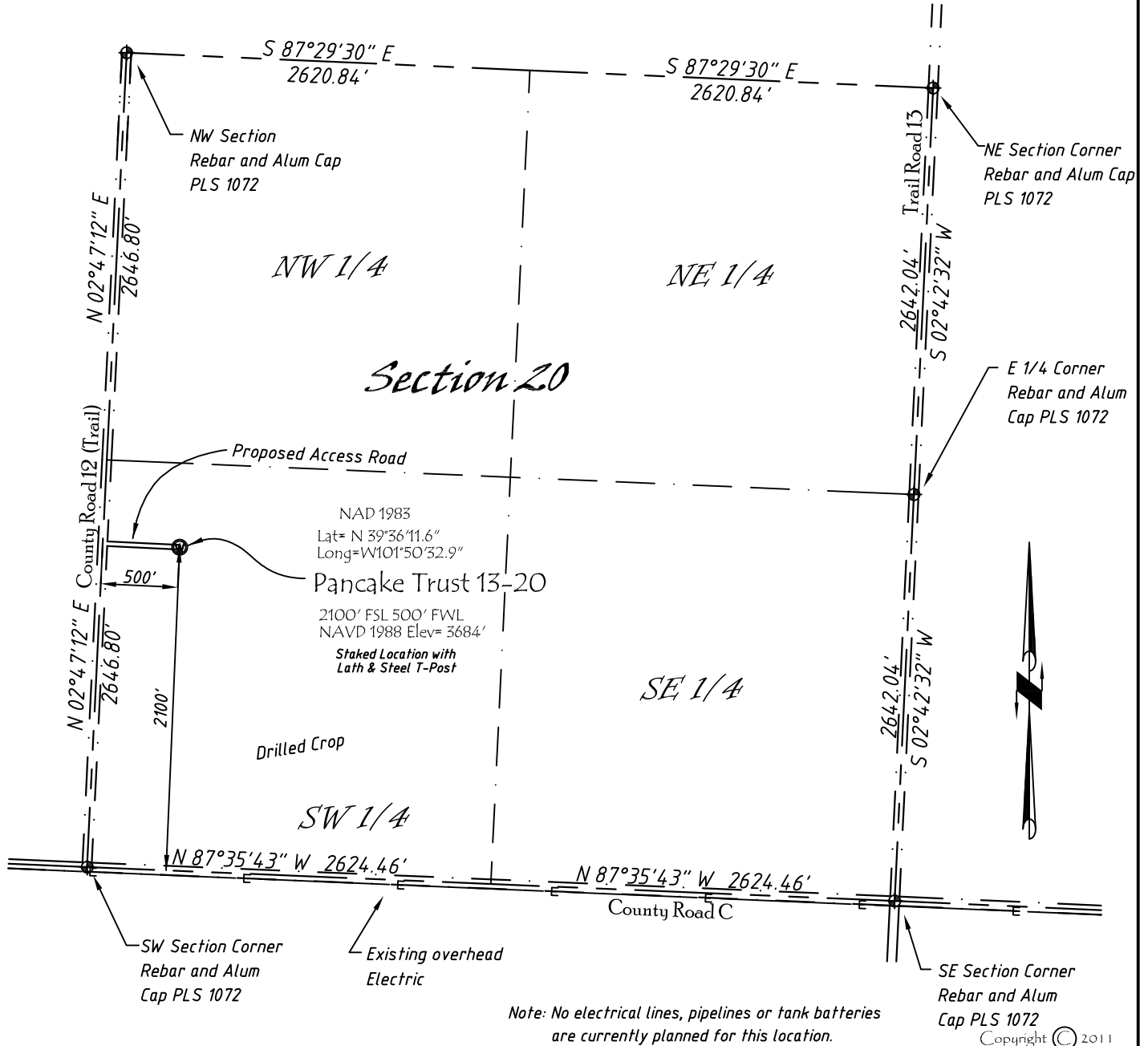


Well Location Map

# Pancake Trust 13-20

NW 1/4, SW 1/4, Section 20, T5S, R40W, 6th P.M. Cheyenne County, Kansas  
 2100' FSL - 500' FWL Elev=3684'



Directions:

From the Intersection of County Road 14 (River Street) & Hwy 36 @ St. Francis, KS Go S on River St. turns into County Rd 14 Approximately 12 miles, to County Road C, then W 2 miles to County Road 12 (Trail), Then N 2100', then E 500' to Staked location.

*This Drawing is for Construction Purposes Only*

Noble Energy, Inc.		
<b>DRAWN</b> SP	<b>DATE</b> 11/1/11	Section 20 T5S, R40W, 6th P.M. Cheyenne County, KS
<b>FB</b> B77P30 B74P18	<b>EQ</b> HiPro	
<b>SCALE</b> 1"=1000'	<b>SHEET</b> 1 of 1	<b>PROJECT NO.</b> 1570.156

North  
Winds  
Surveys, Inc.

402 Walnut  
Kanorado, KS  
785/399/2551

Copyright © 2011