

**TRILOBITE TESTING, INC.**

# DRILL STEM TEST REPORT

American Energies Corporation

**6-19S-1E Marion**

155 N Market Ste 710  
Wichita, Ks 67202

**Bartel Trust 1-6**

Job Ticket: 34994

**DST#: 1**

ATTN: Dave Goldak

Test Start: 2011.10.10 @ 13:26:20

## GENERAL INFORMATION:

Formation: **Mississippi**

Deviated: No Whipstock: ft (KB)

Time Tool Opened: 14:58:20

Time Test Ended: 22:36:50

Test Type: Conventional Bottom Hole (Initial)

Tester: Leal Cason

Unit No: 45

**Interval: 2846.00 ft (KB) To 2892.00 ft (KB) (TVD)**

Reference Elevations: 1573.00 ft (KB)

Total Depth: 2892.00 ft (KB) (TVD)

1564.00 ft (CF)

Hole Diameter: 7.88 inches Hole Condition: Good

KB to GR/CF: 9.00 ft

**Serial #: 6798**

**Inside**

Press@RunDepth: 496.33 psig @ 2847.00 ft (KB)

Capacity: 8000.00 psig

Start Date: 2011.10.10

End Date:

2011.10.10

Last Calib.: 2011.10.10

Start Time: 13:26:21

End Time:

22:36:50

Time On Btm: 2011.10.10 @ 14:55:50

Time Off Btm: 2011.10.10 @ 18:45:35

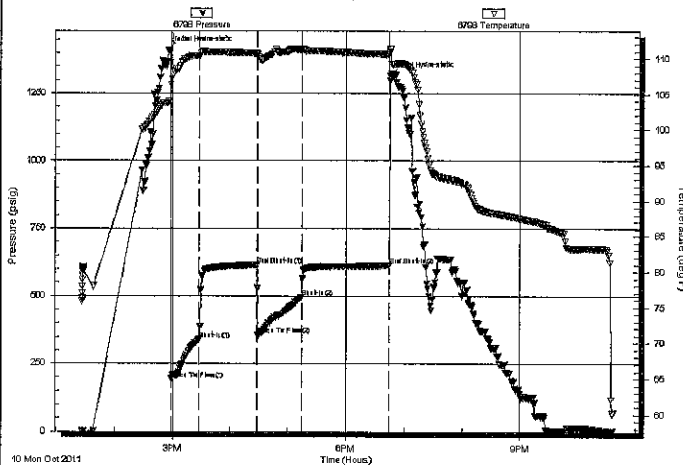
**TEST COMMENT:** IF: Strong Blow, BOB in 1 minute, GTS in 11 minutes, Gauged Gas & Caught Sample

IS: Blow back Built To BOB in 8 minutes

FF: Strong Blow, BOB in 30 seconds, GTS Immediate, Gauged Gas

FS: Blow back Built To BOB in 6 minutes

Pressure vs. Time



PRESSURE SUMMARY

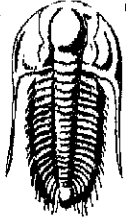
Time (Min.)	Pressure (psig)	Temp (deg F)	Annotation
0	1411.35	103.97	Initial Hydro-static
3	193.09	106.28	Open To Flow (1)
32	339.68	110.38	Shut-In(1)
92	613.49	110.76	End Shut-In(1)
93	355.91	110.62	Open To Flow (2)
139	496.33	111.26	Shut-In(2)
229	612.97	110.60	End Shut-In(2)
230	1314.62	110.92	Final Hydro-static

Recovery

Length (ft)	Description	Volume (bbl)
0.00	GIP 1323	0.00
180.00	Water	0.89
120.00	MWCO 10%M 30%W 60%O	0.86
1197.00	GSY Oil 10%G 90%O	16.79

Gas Rates

	Choke (Inches)	Pressure (psig)	Gas Rate (Mcf/d)
First Gas Rate	0.25	7.00	33.95
Last Gas Rate	0.25	4.00	29.19
Max. Gas Rate	0.25	7.00	33.95



**TRILOBITE  
TESTING, INC.**

# DRILL STEM TEST REPORT

**FLUID SUMMARY**

American Energies Corporation

**6-19S-1E Marion**

155 N Market Ste 710  
Wichita, Ks 67202

**Bartel Trust 1-6**

Job Ticket: 34994

**DST#: 1**

ATTN: Dave Goldak

Test Start: 2011.10.10 @ 13:26:20

## Mud and Cushion Information

Mud Type: Gel Chem

Cushion Type:

Oil API:

30.4 deg API

Mud Weight: 9.00 lb/gal

Cushion Length:

ft

Water Salinity:

98000 ppm

Viscosity: 36.00 sec/qt

Cushion Volume:

bbbl

Water Loss: 10.77 in<sup>3</sup>

Gas Cushion Type:

Resistivity: ohm.m

Gas Cushion Pressure:

psig

Salinity: 1800.00 ppm

Filter Cake: 0.20 inches

## Recovery Information

Recovery Table

Length ft	Description	Volume bbl
0.00	GIP 1323	0.000
180.00	Water	0.885
120.00	MWCO 10%M 30%W 60%O	0.863
1197.00	GSY Oil 10%G 90%O	16.791

Total Length: 1497.00 ft      Total Volume: 18.539 bbl

Num Fluid Samples: 0

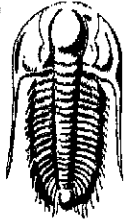
Num Gas Bombs: 0

Serial #:

Laboratory Name:

Laboratory Location:

Recovery Comments: Oil API was 31 @ 66 degrees  
RW Was .09 @ 65 degrees



**TRILOBITE  
TESTING, INC.**

## DRILL STEM TEST REPORT

**GAS RATES**

American Energies Corporation

**6-19S-1E Marion**

155 N Market Ste 710  
Wichita, Ks 67202

**Bartel Trust 1-6**

Job Ticket: 34994

**DST#: 1**

ATTN: Dave Goldak

Test Start: 2011.10.10 @ 13:26:20

### Gas Rates Information

Temperature: 59 (deg F)  
Relative Density: 0.65  
Z Factor: 0.8

Gas Rates Table

Flow Period	Elapsed Time	Choke (inches)	Pressure (psig)	Gas Rate (Mcf/d)
1	15	0.25	7.00	33.95
1	20	0.25	7.00	33.95
1	30	0.25	6.00	32.36
2	30	0.25	5.00	30.78
2	40	0.25	4.00	29.19

Serial #: 6798

Inside

American Energies Corporation

Bartel Trust 1-6

DST Test Number: 1

### Pressure vs. Time

