



Woolsey Operating Company, LLC

Scale 1:240 (5"=100') Imperial

Measured Depth Log

Well Name: Paxton #1
Location: NE SW SW SW
License Number: API: 15-007-23739-00-00
Spud Date: July 18, 2011
Surface Coordinates: 340' FSL & 500 FWL Section 33-Twp 34 South - Rge 11 West
Bottom Hole Coordinates: Vertical Hole
Ground Elevation (ft): 1388
Logged Interval (ft): 3000 To: RTD
Formation: McLish Shale
Type of Drilling Fluid: Chemical Mud, Displace at 3393'.
Region: Barber County, Kansas
Drilling Completed: July 26, 2011
K.B. Elevation (ft): 1397
Total Depth (ft): 5372
Printed by WellSight Log Viewer from WellSight Systems 1-800-447-1534 www.WellSight.com

OPERATOR

Company: Woolsey Operating Company, LLC
Address: 125 N. Market, Suite 1000
Wichita, KS 67202

GEOLOGIST

Name: W. Scott Alberg
Company: Alberg Petroleum, LLC
Address: 609 Meadowlark Lane
Pratt, Kansas 67124

FORMATION TOPS

	SAMPLE TOPS	LOG TOPS
LECOMPTON	3504(-2107)	3498(-2101)
KANWAKA	3524(-2127)	3520(-2123)
HEEBNER	3757(-2360)	3754(-2357)
QUINDARO SHALE	4316(-2919)	4310(-2913)
HUSHPUCKNEY SHALE	4510(-3113)	4505(-3108)
B/KC	4559(-3162)	4554(-3157)
PAWNEE	4663(-3266)	4656(-3259)
CHEROKEE GROUP	4711(-3314)	4703(-3306)
MISSISSIPPIAN	4770(-3373)	4762(-3365)
KINDERHOOK SHALE	5043(-3646)	5036(-3639)
WOODFORD SHALE	5085(-3688)	5080(-3683)
VIOLA	5110(-3713)	5107(-3710)
SIMPSON GROUP	5260(-3863)	5254(-3857)
SIMPSON SAND	5286(-3889)	5281(-3884)
MCLISH SHALE	5335(-3939)	5327(-3931)
RTD	5372(-3975)	
LTD		5366(-3969)

NOTE - All log tops approximately 6' higher than sample tops.

COMMENTS

Surface Casing: Set 5 joints 10 3/4" at 223' with 240 sxs Class A, 2% gel, 3% cc, plug down at 8:15 pm on July 18, 2011. Cement did Circulate.

Production Casing: Ran 5 1/2" Casing.

Deviation Surveys: 3/4 - 225', 3/4 - 1261', 1/2 - 1733', 3/4 - 2080', 1/4 - 2423', 3/4 2736', 1/4 - 3016', 1/4 - 3267', 3/4 - 3582', 3/4 - 3802', 1/4 - 3897', 3/4 - 3991', 3/4 - 4086', 1-4180', 3/4 - 4275', 3/4 - 4744', 1 -5372'.

Contractor Bit Record:

1- 14 3/4" out at 225'.

2- 7 7/8" out at 5372'.

Gas Detector: Woolsey Operating Company, Trailer #1

Mud System: Mud Co, Brad Bortz, Engineer

DSTs: None

Logged by Superior Well Services, Inc.

LTD - 5366'.

DSTs

No DST's taken on this well.

CREWS

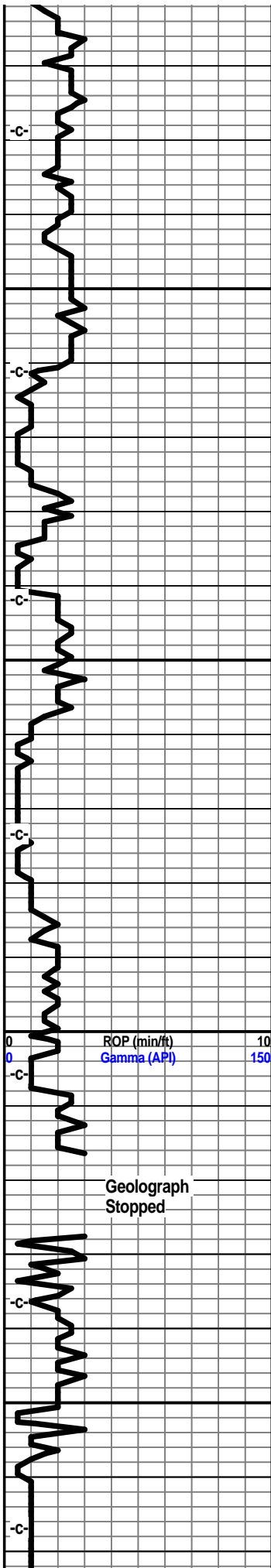
H2 Drilling Rig #3

Tool Pusher - Randy Smith

Drillers - Gary Axtell - Days

Luis Marquez - Evening

Cesor Regaldo - Morning

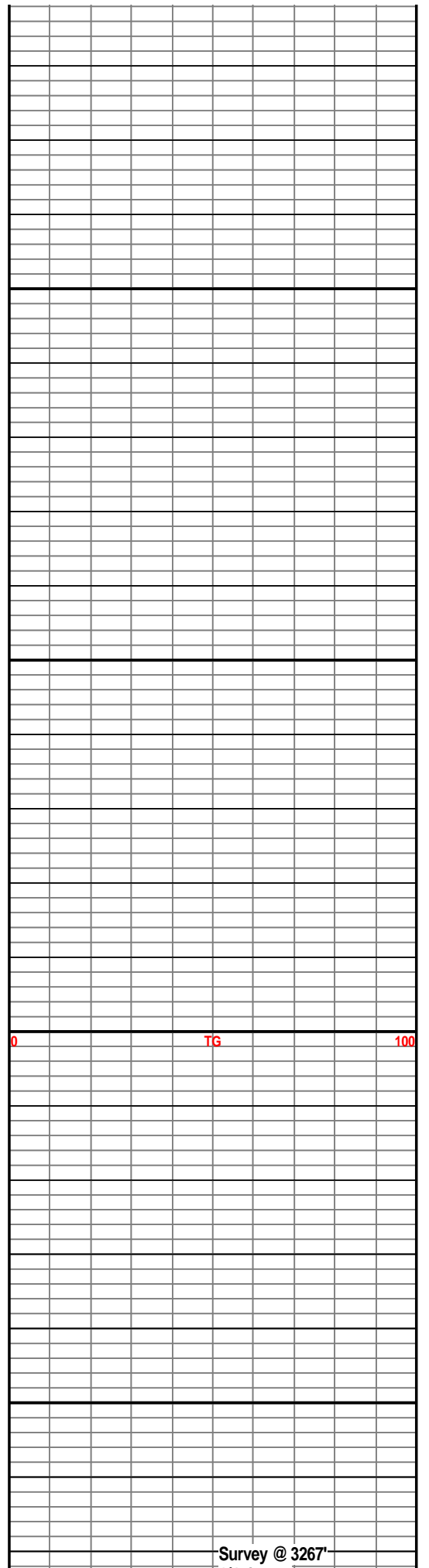


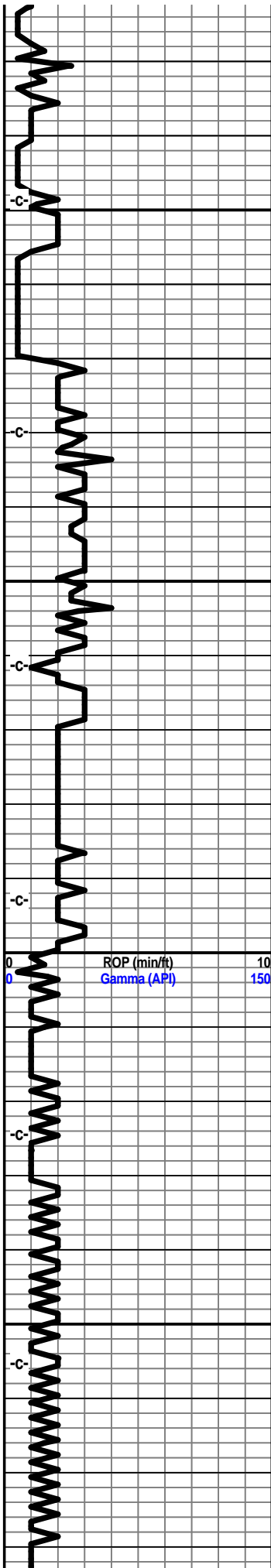
3100

3150

3200

3250



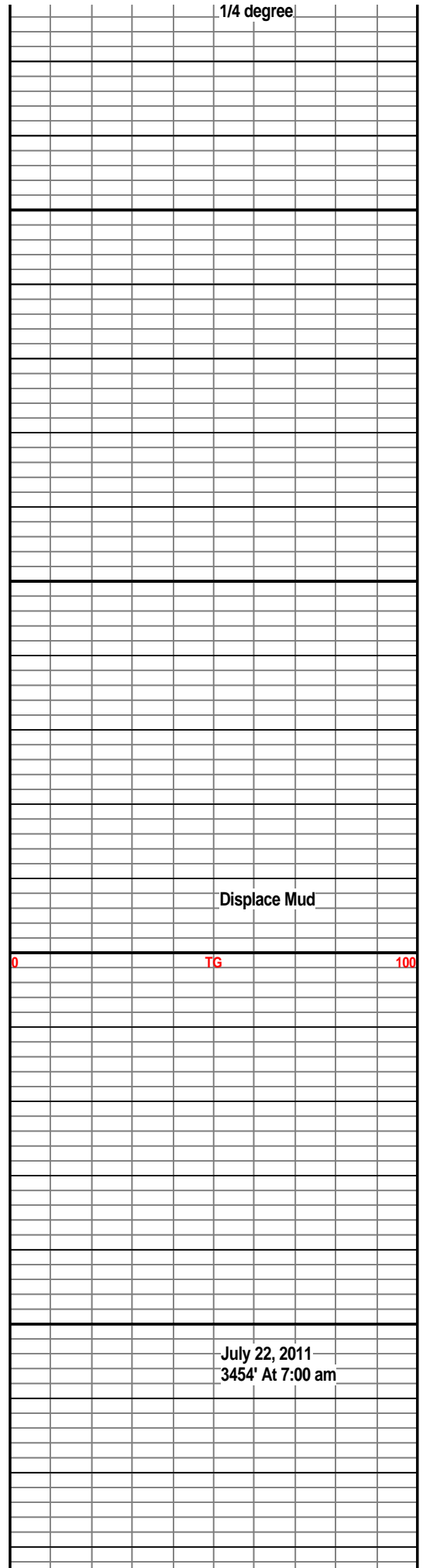


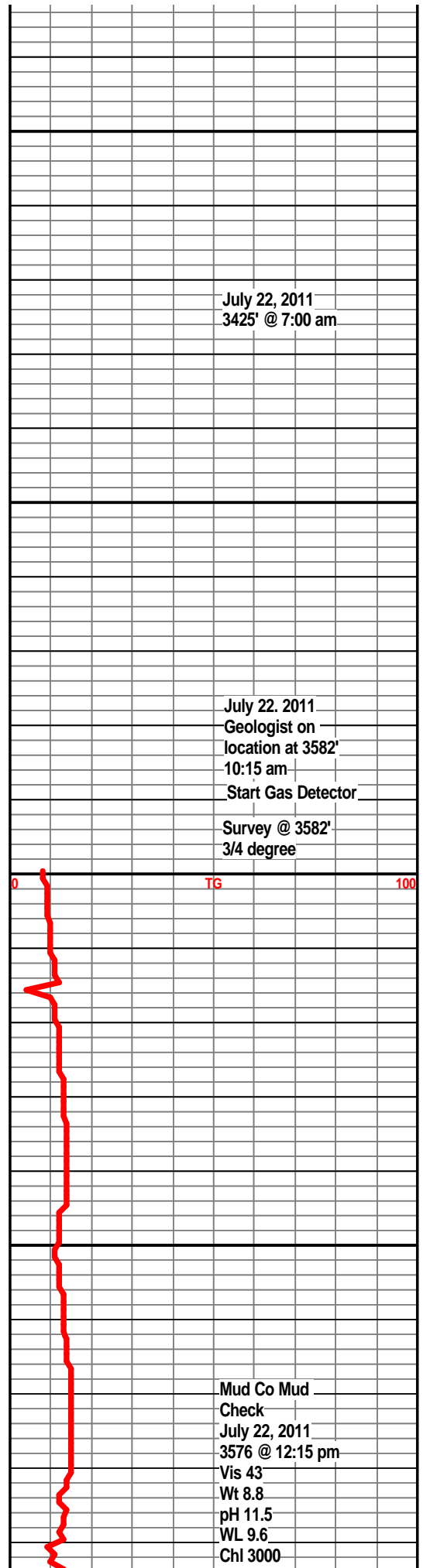
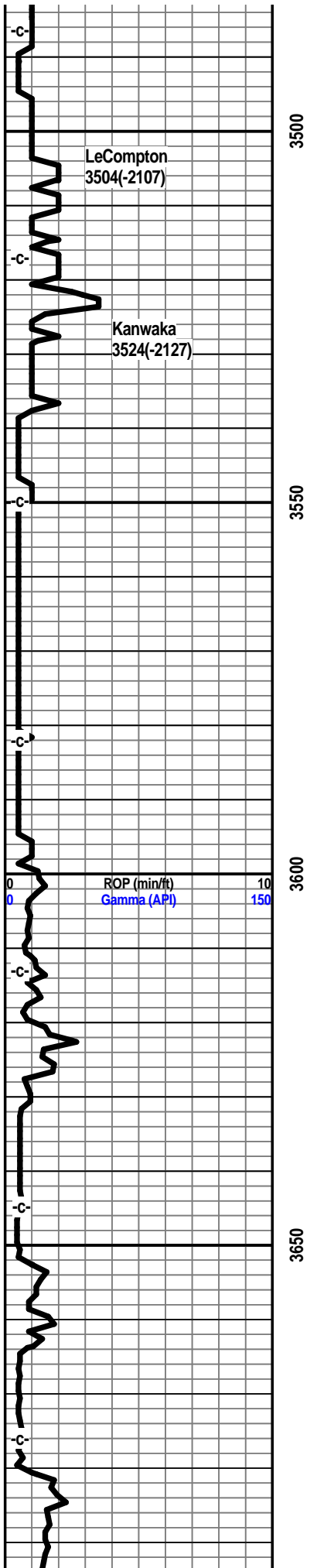
3300

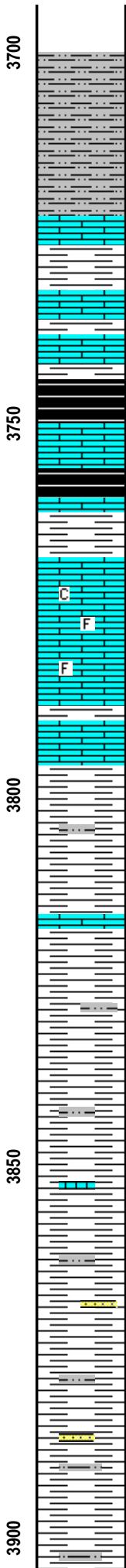
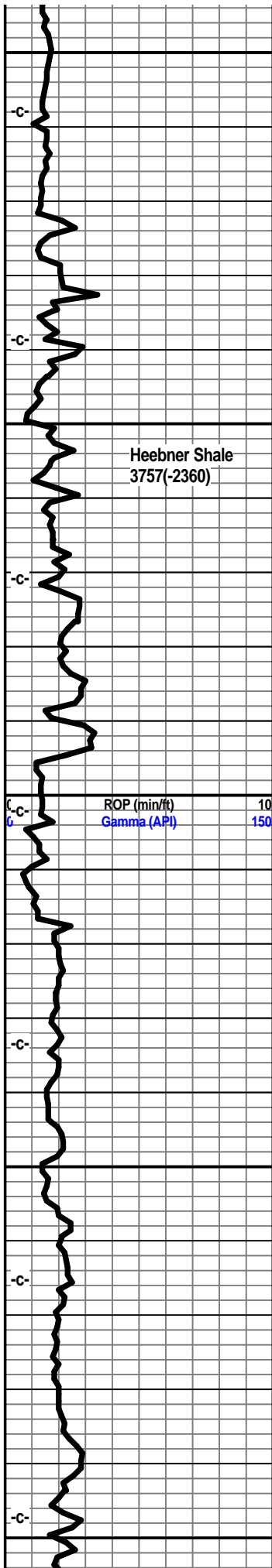
3350

3400

3450







Shale, light grey to grey, silty to slightly sandy.

Limestone, tan, tan-brown, xln ,foss in part.

Shale, grey-black, slightly carb.

Limestone, buff-tan, xln dense.

Shale, grey-black, slightly carb.

Limestone, cream-white, buff, fxln, chalky in part, trace xln porosity, slightly foss, dull min fluor.

Limestone, tan-white, xln, dense, foss in part.

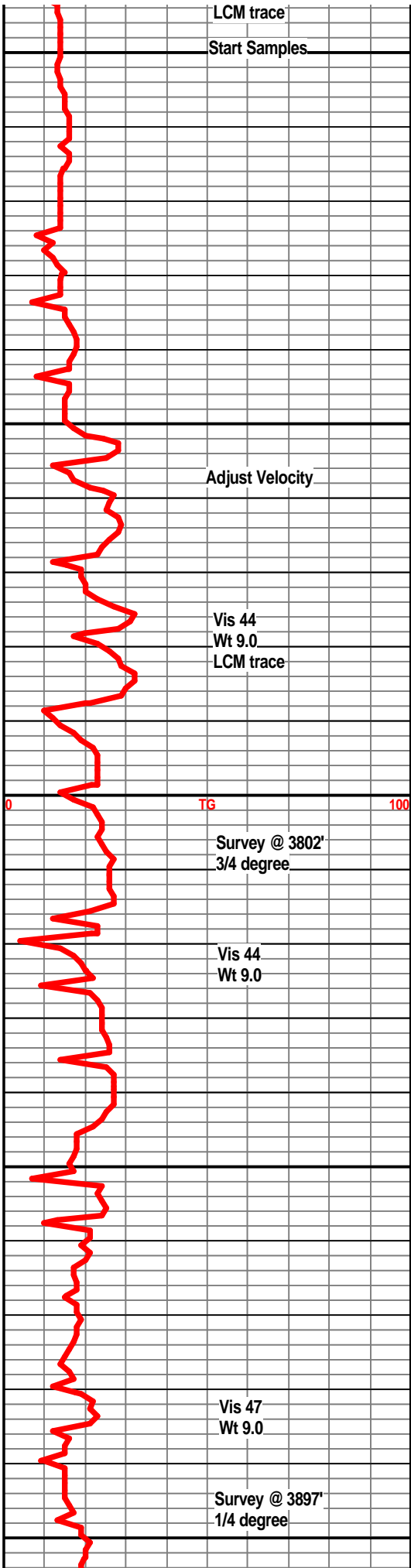
Shale, light grey to grey, silty.

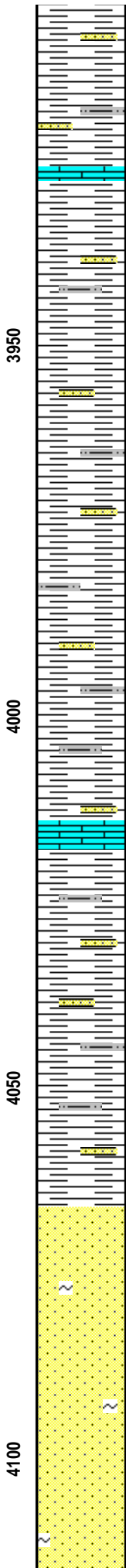
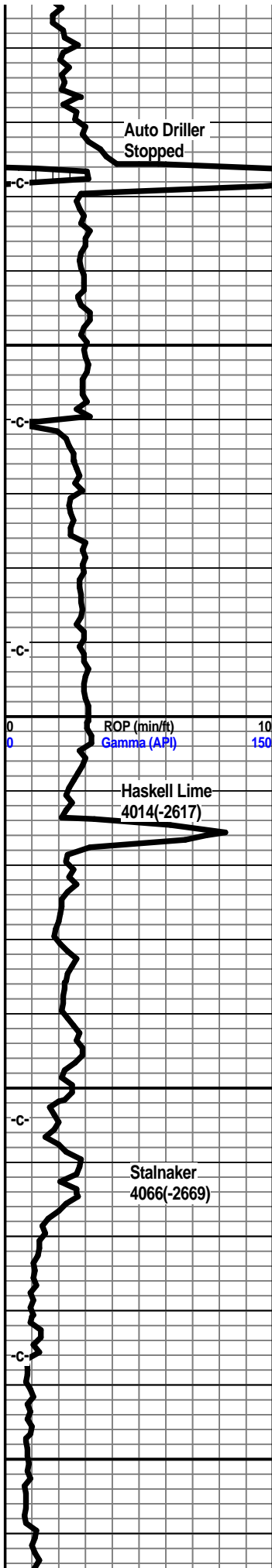
Limestone, tan-brown, mxln, dense, foss in part.

Shale, grey, light grey, silty to sandy in part.

Shale grey to light grey, silty, traces of ls frags.

Shale, grey, silty to sandy.





Shale, light grey, silty, some sand clusters.

Limestone, tan-brown, dense, foss.

Shale, grey to light grey, silty to sandy.

shale, light grey, silty to sandy.

Shale, light grey, silty, sandy in part.

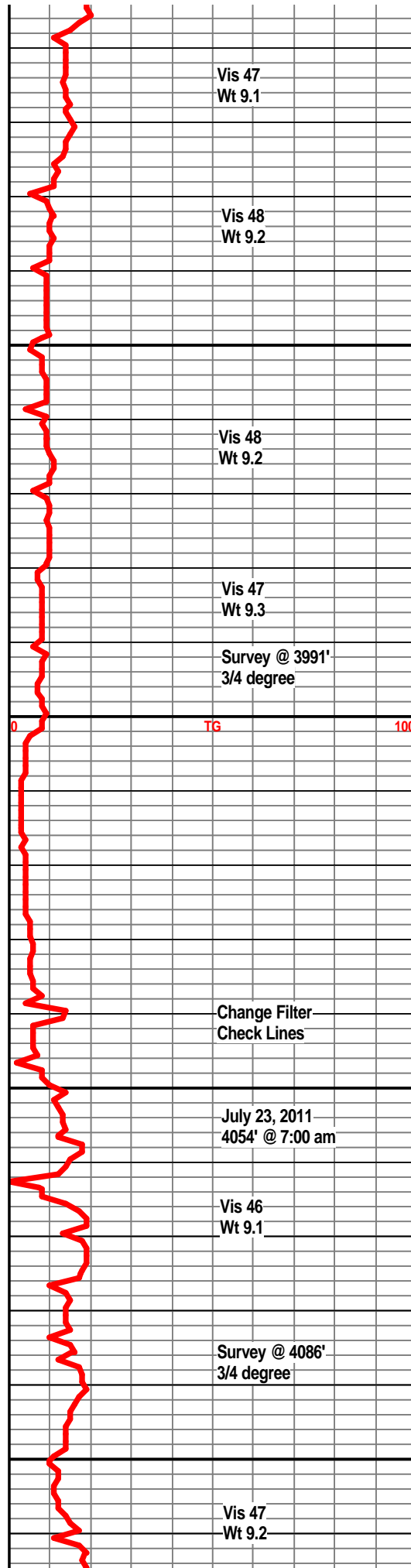
Limestone, tan, tan-brown, xln, dense, foss.

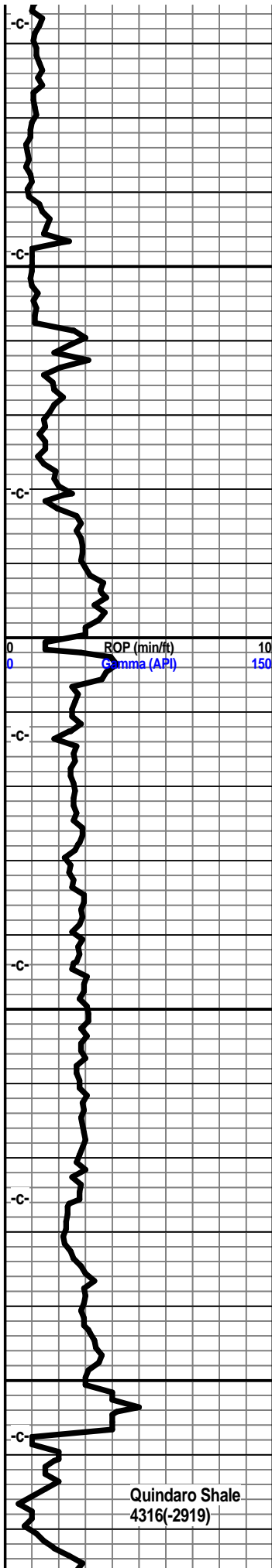
Shale, light grey, slity to sandy.

Shale, light grey to grey, silty to sandy.

Sandstone, clear to white, fine grained, SA, friable, fair sorting, mica, trace glauc, no visible shows, no fluor, no odor.

Sandstone, a/a





Sandstone, a/a

Sandstone, cear to white, fine grained, fair sorting, SA, mica, friable, silty in part, no visible shows.

Shale, light grey to grey, silty to sandy.

Shale, light grey to grey, silty to sandy, some limestone fragments.

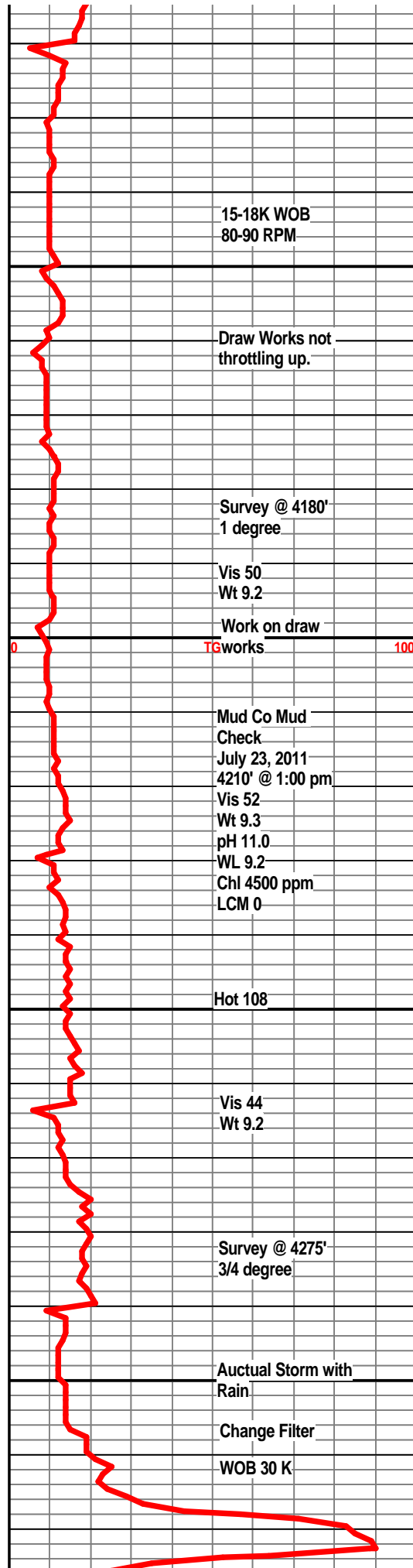
Shale, grey, silty, few sand clusters.

Shale, grey, silty.

Shale, grey, light grey, silty.

Shale, grey, silty.

Shale, grey-black, carb.



15-18K WOB
80-90 RPM

Draw Works not
throttling up.

Survey @ 4180'
1 degree

Vis 50
Wt 9.2

Work on draw

TGworks

Mud Co Mud
Check
July 23, 2011
4210' @ 1:00 pm
Vis 52
Wt 9.3
pH 11.0
WL 9.2
Chl 4500 ppm
LCM 0

Hot 108

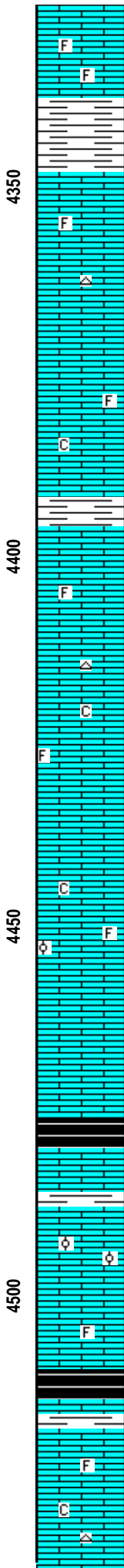
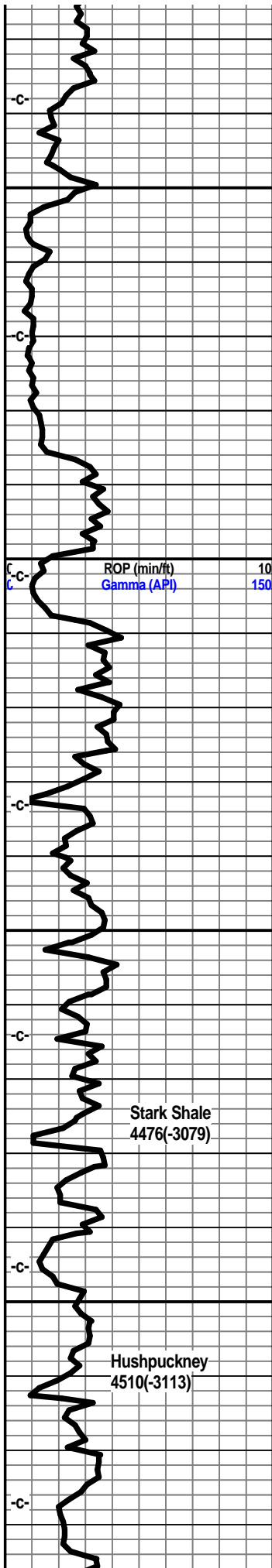
Vis 44
Wt 9.2

Survey @ 4275'
3/4 degree

Auctual Storm with
Rain

Change Filter

WOB 30 K



Limestone, tan, buff, xln, dense, foss, trace chalky.

Shale, grey.

Limestone, cream, buff-white, xln, very foss, foss frags, scatterd vugs, foss porosity, chalky in part, no visible shows.

Limestone, cream to buff, xln, foss porosity, slightly chalky, trace chert at base.

Shale, grey.

Limestone, buff, grey-white, xln, dense in part, foss frags, foss porosity, traces of chert, subchalky in part, no visible shows.

Limestone, tan-white, tan, xln, dense in part, slightly chalky, foss, trace foss porosity, traces of tan-grey chert, no visible shows.

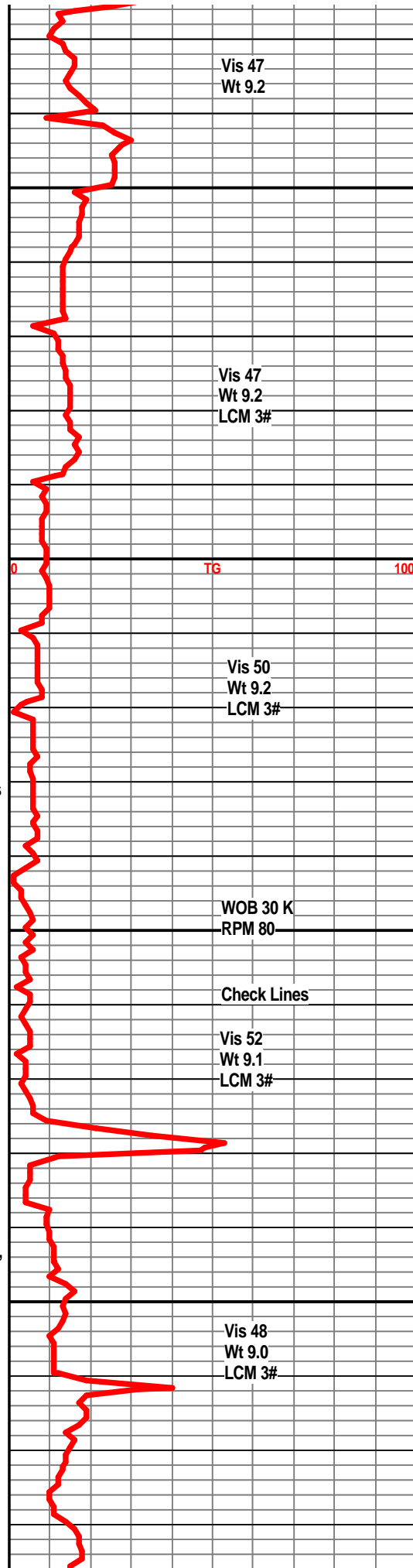
Limestone, buff, tan, xln, foss, trace oolites, subchalky, no visible shows.

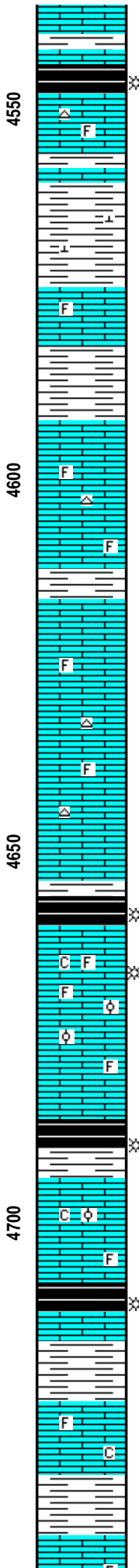
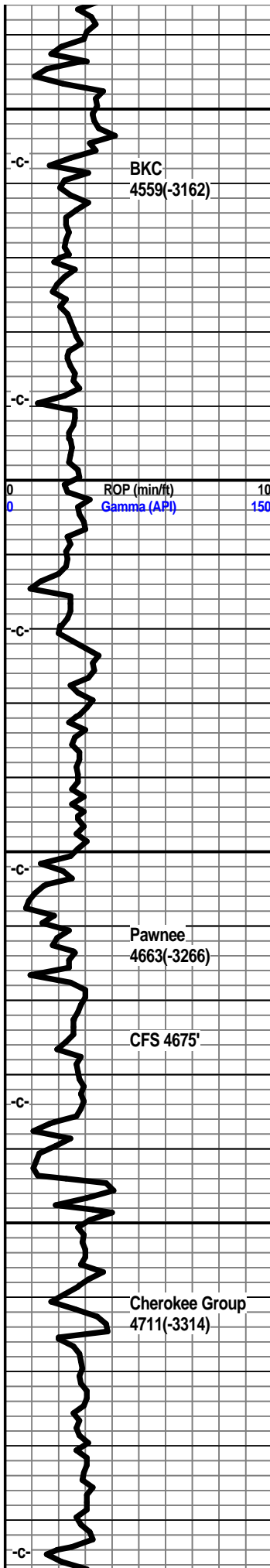
Shale, grey-black, carb.

Limestone, cream, buff-white, xln, trace oolites, some foss porosity, subchalky in part, no visible shows.

Shale, grey-black, carb.

Limestone, tan, buff, xln, dense in part, subchalky, trace of tan chert.





Shale, grey-black, carb.

Limestone, buff, xln, dense, traces of tan cherts, slightly foss.

Shale, light grey, grey-green, calcitic.

Limestone, grey-green, xln, partly dense, trace foss.

Shale, light grey-green.

Limestone, cream-white, grey-green, xln, dense, trace of chert, trace of foss.

Shale, grey, light grey.

Limestone, cream-white, tan, xln, dense, slightly foss, trace tan chert, some subchalky.

Limestone, tan-white, xln dense, tan chert, slightly foss.

Shale, grey-black, carb.

Limestone, cream, tan-white, xln, partly dense, trace oolites, subchalky in part, some xln porosity, questionable gas bubbles, dull min. fluor., no odor.

Shale, grey-black, carb.

Limestone, cream-white, tan, xln dense, foss, subchalky, trace oolites, dull fluor, no visible shows.

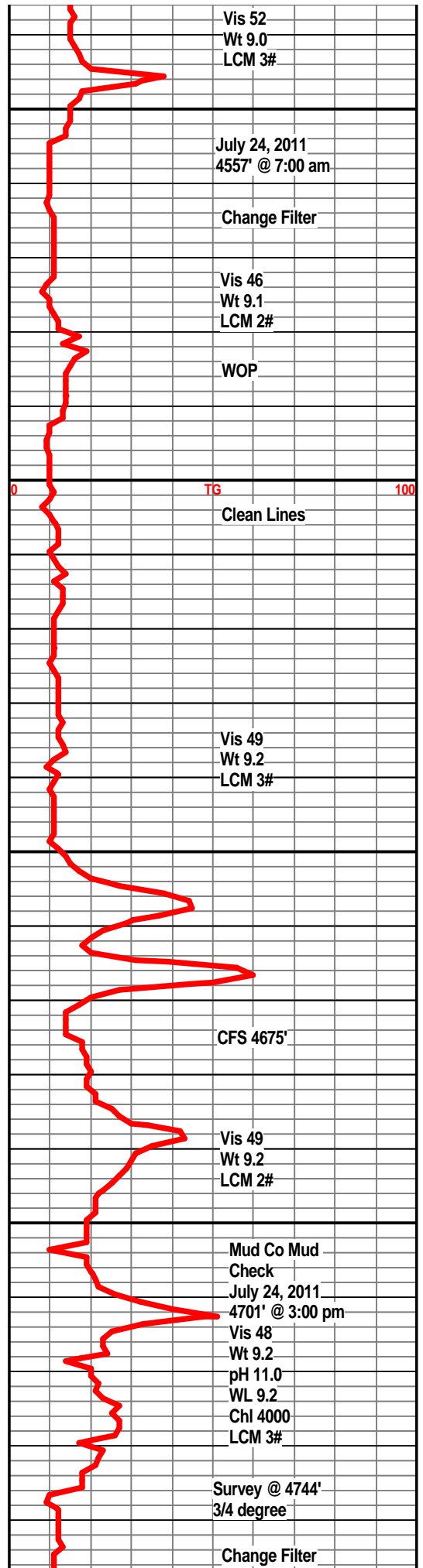
Shale, grey-black, carb,

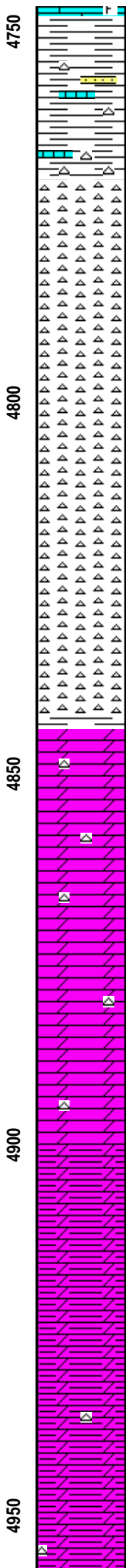
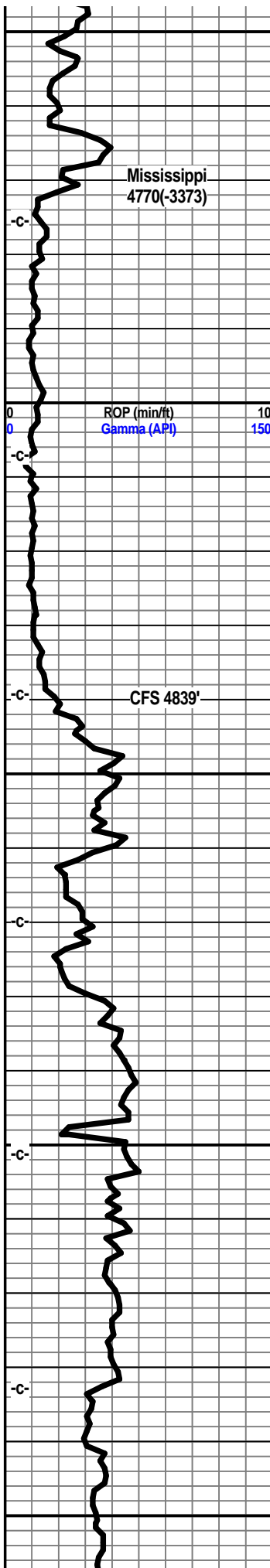
Shale, grey.

Limestone, grey-white, tan xln, dense, slightly foss, chalky in part.

Shale, grey, light grey, calcitic.

Limestone. tan-brown. xln dense. foss.





Shale, grey, some vari-colored, maroon, yellow, soft, traces of sandstone clusters, trace of orange sharp chert, some ls frags.

Chert, light grey, off-white, trip in part, some fresh, opaque, trans, trace pp porosity, v slight show oil, asphaltic staining, faint odor.

Chert, tan, tan-white, weathered, pp & scattered vugs, trip in part, show free oil in tray, bleeding gas, light brown scattered staining, fair odor, some fresh, dull scattered fluor.

Chert, tan, tan-white, weathered, good odor, shows increasing with depth, moldic, pp, vug porosity, dull fluor, good light brown staining.

Chert, tan, off-white, weathered, some fresh, edge staining, good pp, vug porosity, good show free oil and bleeding gas, good odor, good staining, dull fluor.

Chert, tan-white, tan, off-white, weathered, moldic, pp, scattered vugs, some fresh with edge weathering, good brown staining, good odor, good show oil & gas, dull fluor.

Dolo, light grey, tan, xln dense, trace staining, some weathered cherts, splintery grey-green shales, slight show oil.

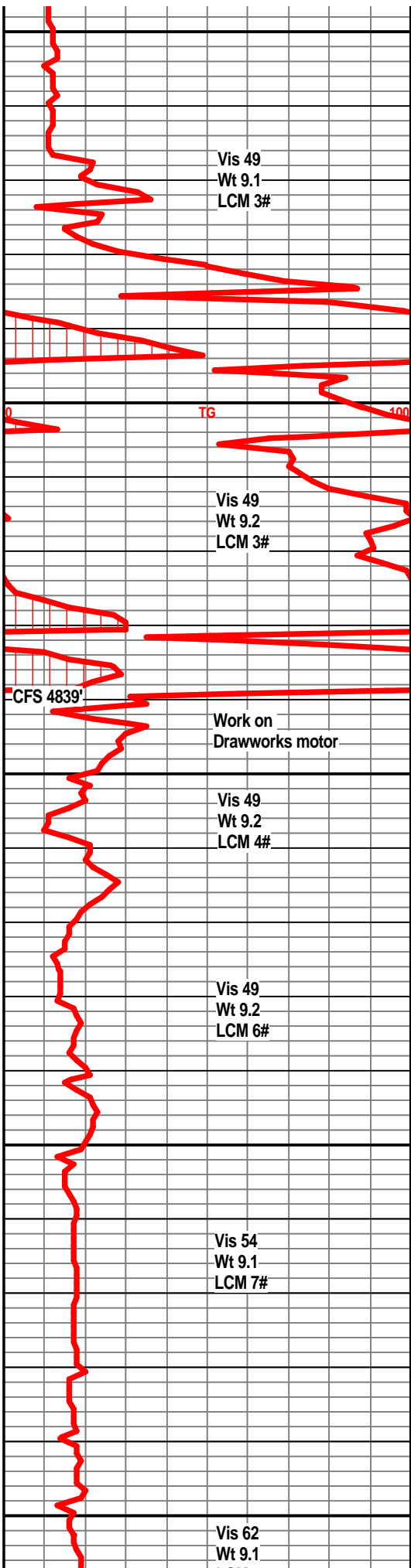
Dolo, grey, tan-white, cream, xln, dense, glauc, some very light scattered staining, weathered cherts with staining, dull fluor, splintery grey-green shales.

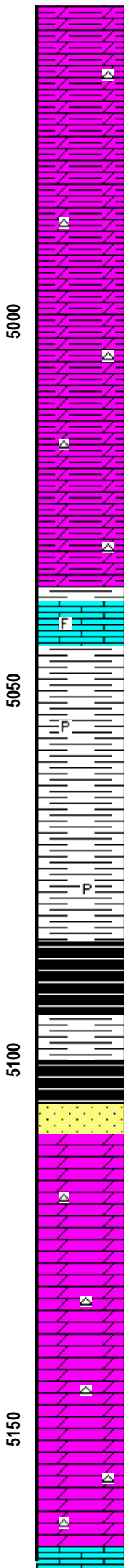
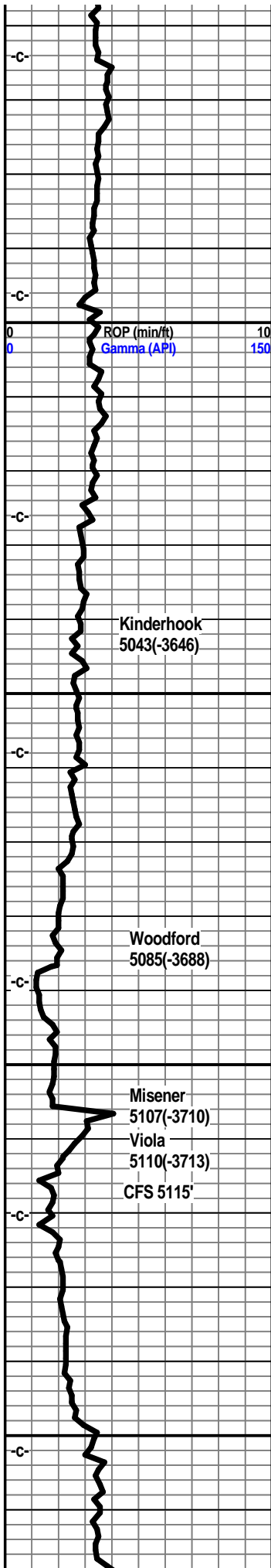
Dolo, tan, grey-white, xln, dense,, fresh cherts, trans, faint staining, grey-green splintery shales.

Dolo, light grey, xln, dense, grey-green splintery shales, traces of white, trans chert.

Dolo, light grey, grey, xln, dense, grey, grey-green shales, trans to fresh cherts.

Dolo, light grey, grey, xln, dense, grey, green splintery shales, traces of fresh off-white chert.





Dolo, light grey, grey, xln, dense, grey-green shales, cherty in part.

Dolo, grey, xln, dense, some soft, grey splintery shales, traces of off-white chert.

Dolo, grey, grey-white, xln, dense, traces of off-white chert, some grey-green, rust shales.

Dolo, grey, xln dense, grey-green, rust splintery shales.

Limestone, cream, tan-buff, xln, dense, foss in part.

Shale, grey, traces of pyrite.

Shale, dark grey, trace pyrite.

Shale, grey-black, coffee brown, some plant spores, carb., gas bubbles.

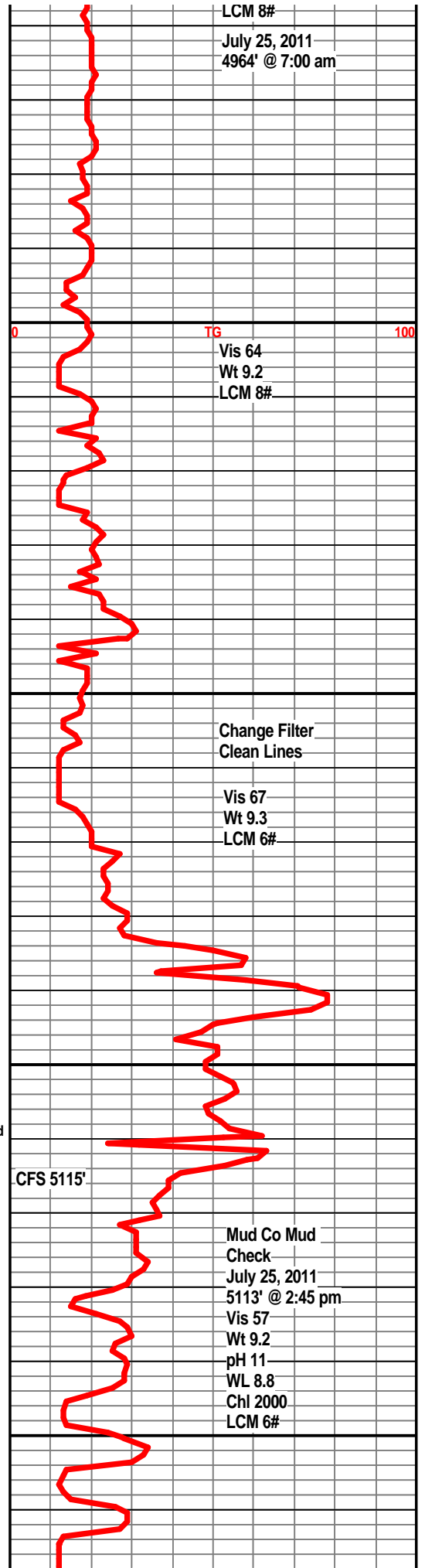
Shale, grey-black, coffe brown, spores, carb.

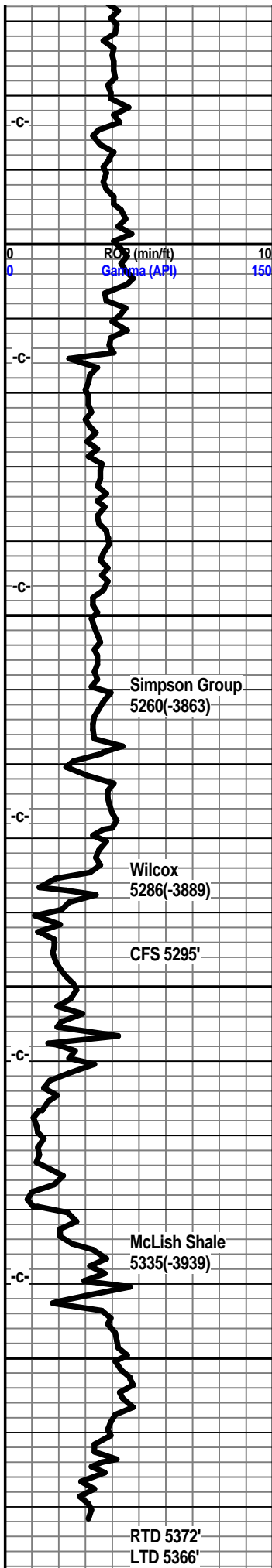
Sandstone, clear to white, SA, well cemented, shale inclusions, very faint show oil, no odor, very tite, scattered fluor.(One piece fairly friable with show.)

Dolo, light grey, grey, xln, soft in part, trace chert, dull fluor in part, some granular texture in part, no visible shows.

Dolo, light grey, xln, soft, trace off-white chert, no odor, no visible shows.

Dolo, light grey, grey, xln, traces of off-white chert.





Limestone, tan-white, cream-white, fxln, trace of xln porosity, trace of foss, subchalky in part, dull fluor, no visible shows.

Limestone, tan-white, xln, dense, traces of tan sharp chert.

Limestone, tan-white, fxln, dense, sharp tan cherts, some chalky white limestone, no visible shows.

Limestone, tan-white, buff, dense, subchalky, slightly dolo in part, sharp cherts.

Limestone, tan-white, tan, xln, dense, tan sharp cherts, slightly dolo in part.

Shale, dark grey-green, firm, sand grains imbedded, trace pyrite.

Sandstone, dolomitic, grey-white, sa qtz grains, well cemented, trace pyrite, glauc, shale inclusions.

Shale, dark grey-green, sandy in part.

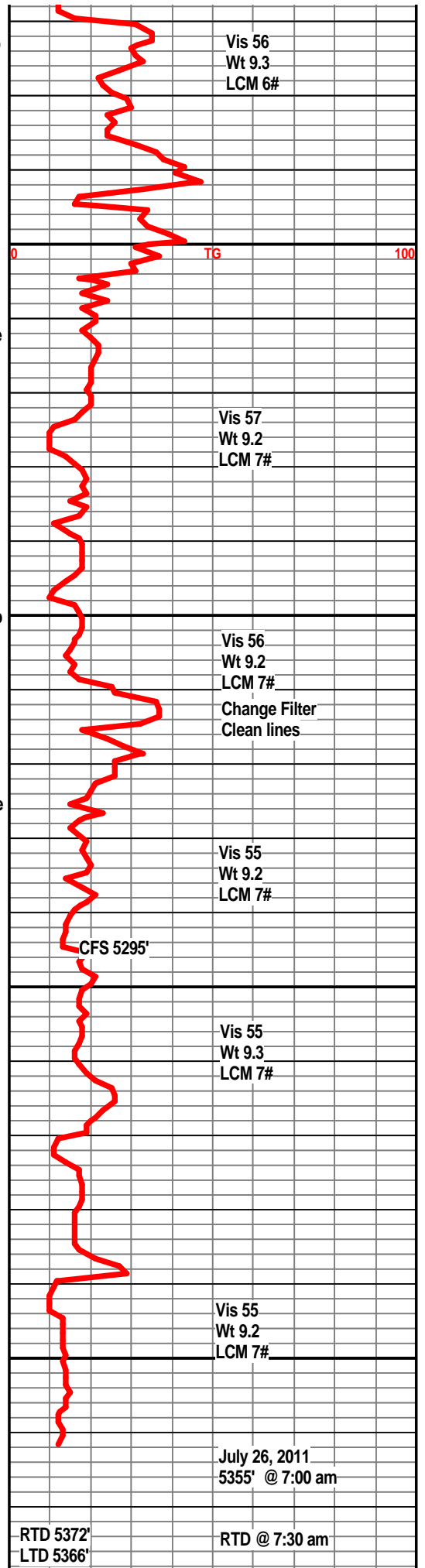
Sandstone, clear to grey-white frosted, SA to SR, friable in part, fair sorting, some well cemented, dolo in part, glauc, gil., trace pyrite inclusions, questionable dark scattered asphaltic stain, no odor, scattered dull min fluor, no visible shows.

Sandstone, clear to white, frosted qtz grains, fair sorting friable in part, some dolo, some tite, trace show dark oil, questionable gas bubbles, no odor, very dull scattered fluor.

Sandstone, clear to white, SA, friable to tite in part, fair sorting, min fill, clay fill, glauc, some shale inclusions, no odor.

Shale, dark grey-green, teal green, few sand inclusions.

Shale, dark green, firm.



00

Mud Co Mud Check	Survey @ 5372'
July 26, 2011	1 degree
5372' @ 10:45 am	
Vis 61	
Wt 9.3	
pH 10	
WL 10	
Chi 3000	
LCM 6#	