

LOG-TECH



Dual Induction Log

DIGITAL LOG (785) 625-3858

API No.	15-051-26183-00-00	
Company	Venture Resources, Inc.	
Well	Ridler "G" SWD #2	
Field	Bermis-Shutts	
County	Ellis	State Kansas
Location	NE NE NE SW 2461' FSL / 2646' FEL	
Sec: 1	Twp: 11S	Rge: 18W
Other Services	CALIPER	

Permanent Datum	Ground Level	Elevation 1911	K.B. 1916
Log Measured From	Kelly Bushing	5 Ft. Above Perm. Datum	D.F. 1911
Drilling Measured From	Kelly Bushing		G.L. 1911
Date	10/26/2011		
Run Number	One		
Depth Driller	2486		
Depth Logger	2232		
Bottom Logged Interval	2231		
Top Log Interval	200		
Casing Driller	13.375 @ 223		
Casing Logger	216		
Bit Size	12.25		
Type Fluid in Hole	Chemical		
Salinity, ppm CL	1300		
Density / Viscosity	8.8	52	
pH / Fluid Loss	10.5	5.2	
Source of Sample	Flowline		
Rm @ Meas. Temp	2.5	@ 60	
Rmf @ Meas. Temp	1.88	@ 60	
Rmc @ Meas. Temp	3.38	@ 60	
Source of Rmf / Rmc	Charts		
Rm @ BHT	1.49	@ 101	
Operating Rig Time	2 Hours		
Max Rec. Temp. F	101		
Equipment Number	15		
Location	Hays		
Recorded By	R. Barnhart		
Witnessed By	Pete Waggoner		

<<< Fold Here >>>

All interpretations are opinions based on inferences from electrical or other measurements and we cannot and do not guarantee the accuracy or correctness of any interpretation, and we shall not, except in the case of gross or willful negligence on our part, be liable or responsible for any loss, costs, damages, or expenses incurred or sustained by anyone resulting from any interpretation made by any of our officers, agents or employees. These interpretations are also subject to our general terms and conditions set out in our current Price Schedule.

Comments

Thank you for using Log-Tech, Inc.
(785) 625-3858

Hays, KS:
River Rd: 2 1/2E to Transfer Station, N into

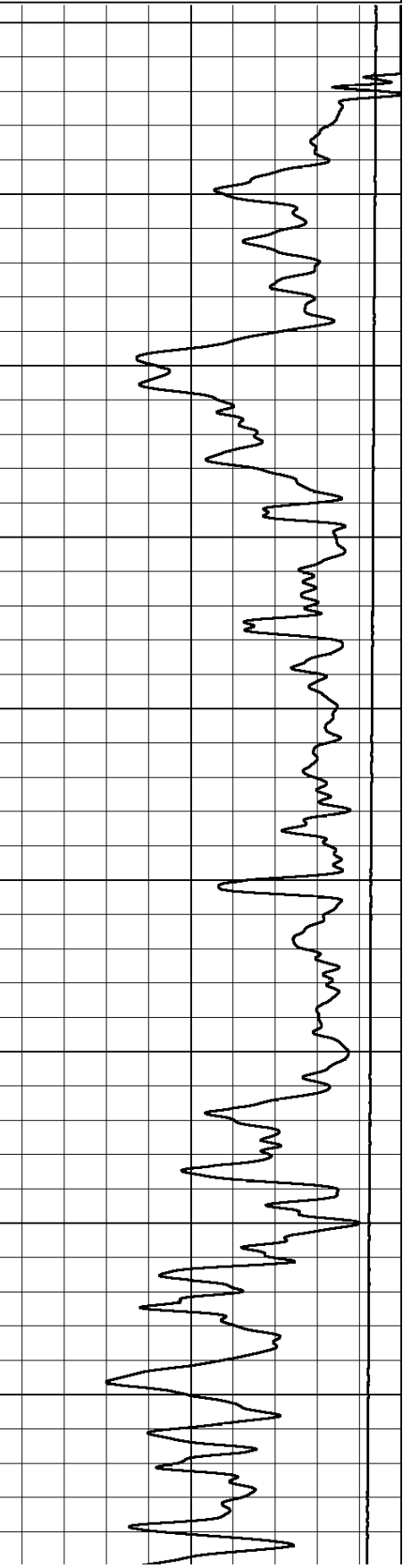
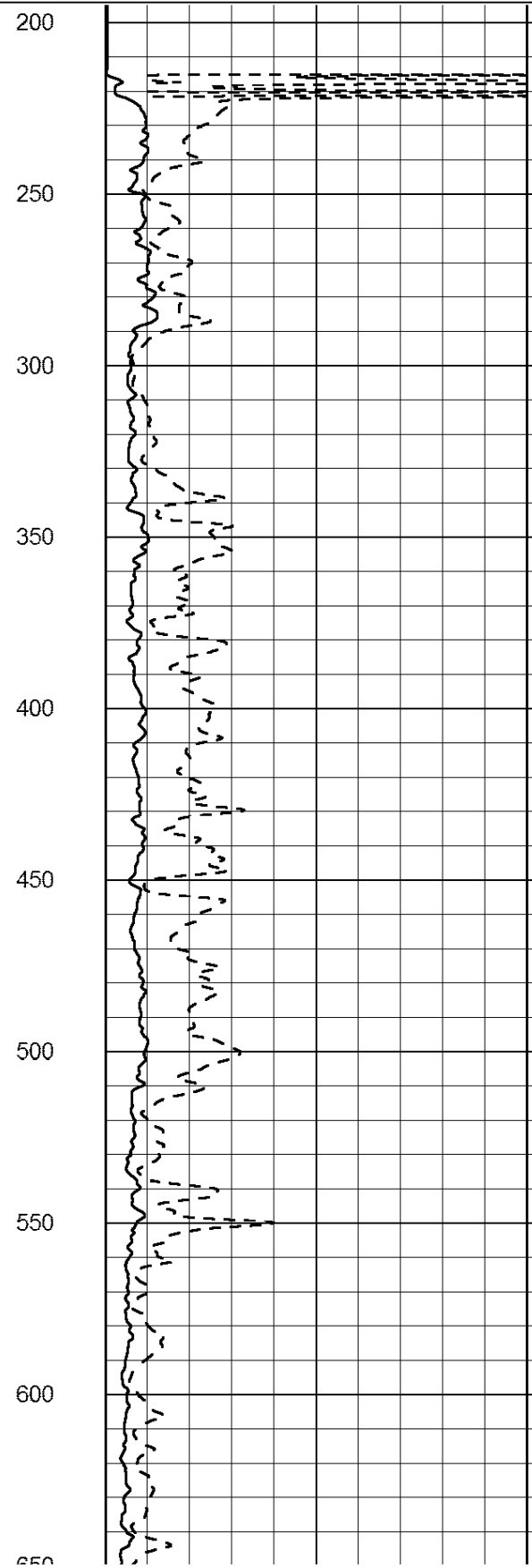
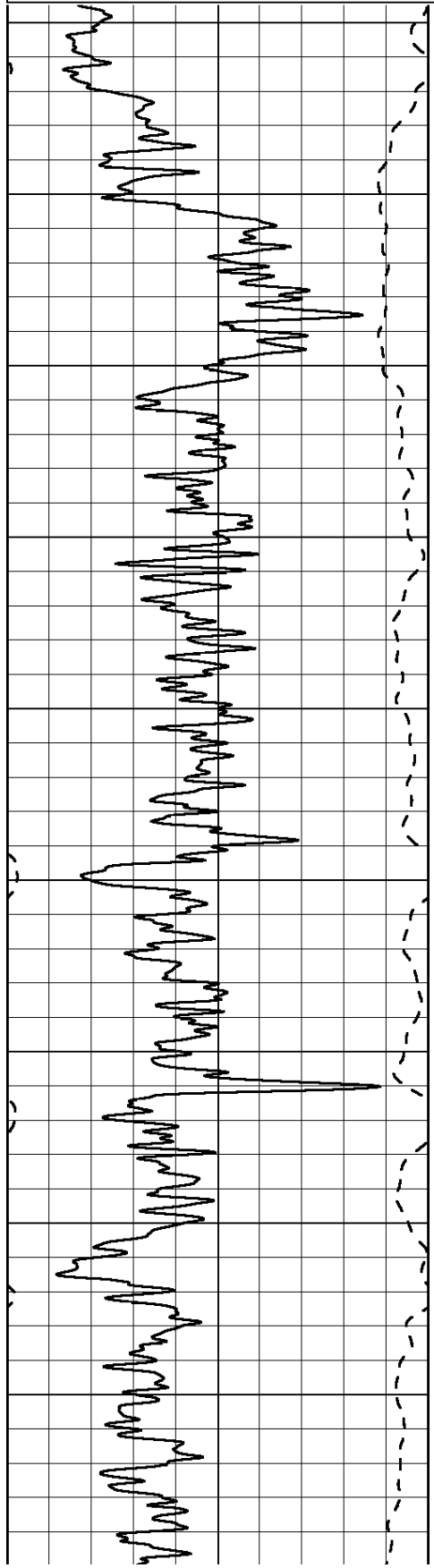
Database File: venture_ridler g- swd2.db
 Dataset Pathname: dil/pass2
 Presentation Format: dil2in
 Dataset Creation: Wed Oct 26 10:43:21 2011 by Log Open-Cased 090629
 Charted by: Depth in Feet scaled 1:600

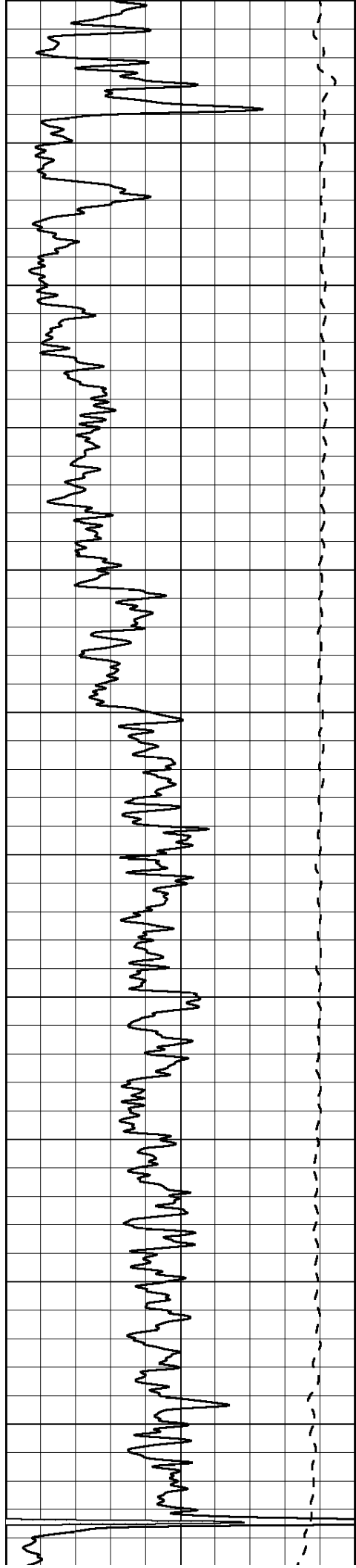
0	Gamma Ray (GAPI)	150
-200	SP (mV)	0

0	Shallow Resistivity (Ohm-m)	50
0	Deep Resistivity (Ohm-m)	50

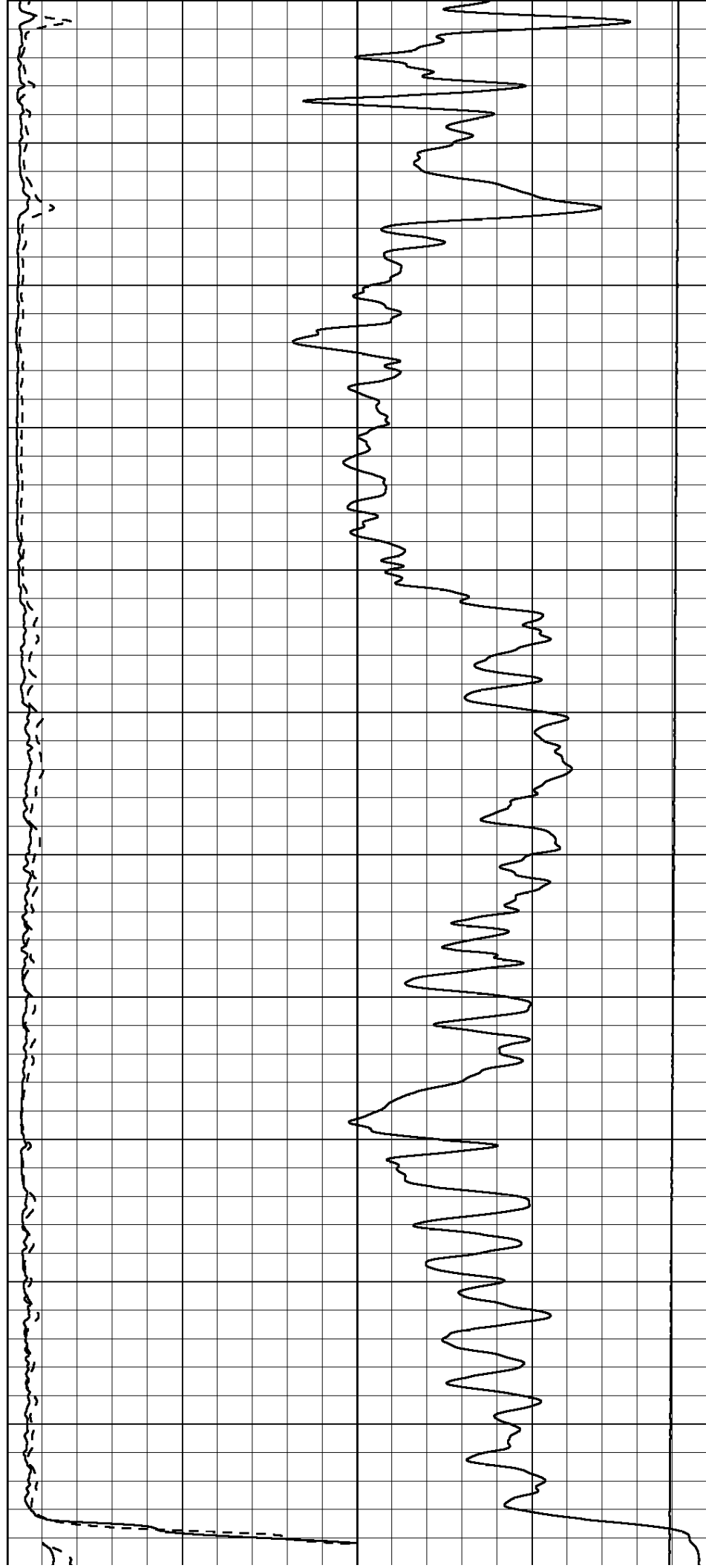
1000	Conductivity (mmho/m)	0
15000	Line Tension (lb)	0

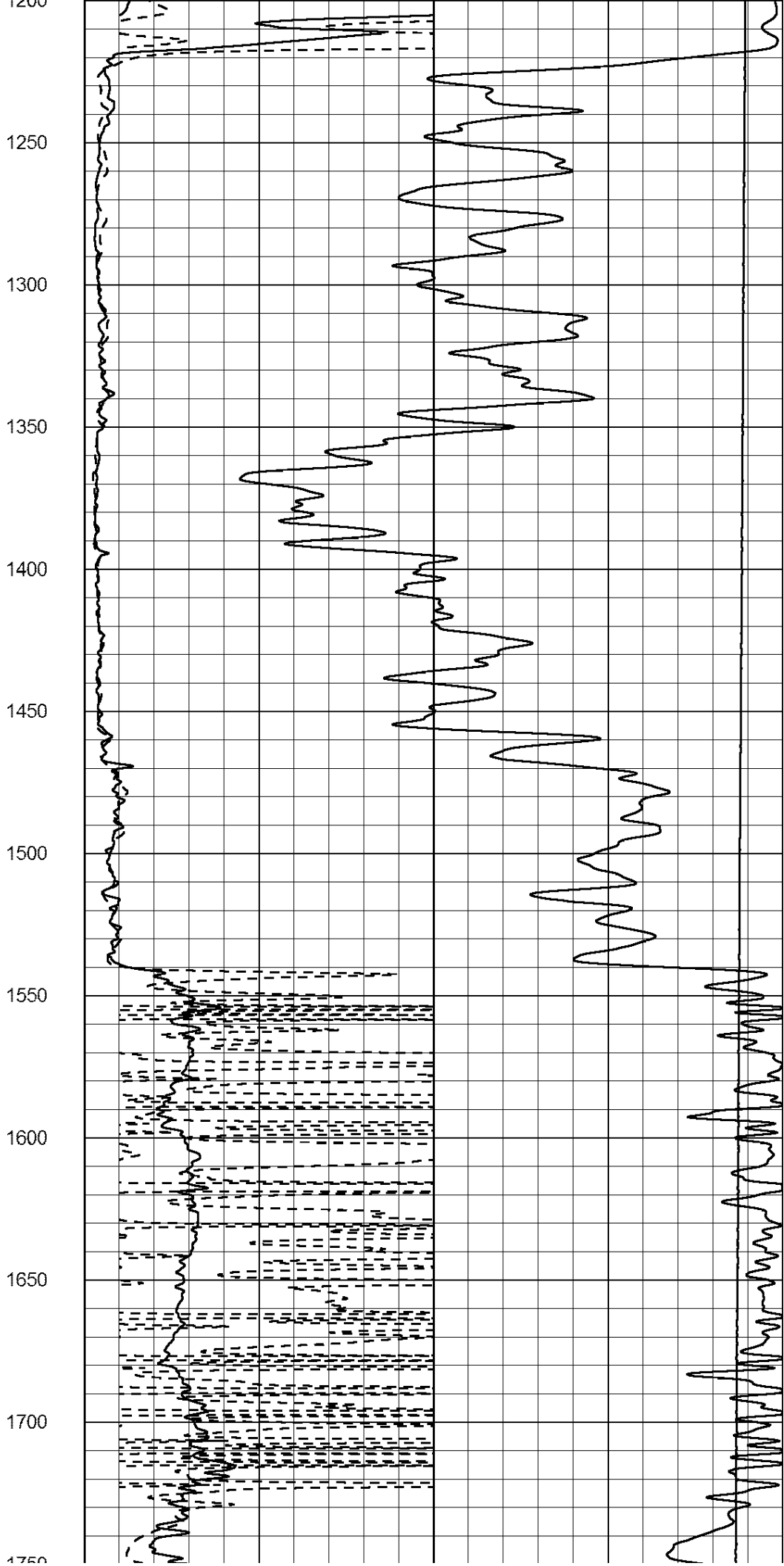
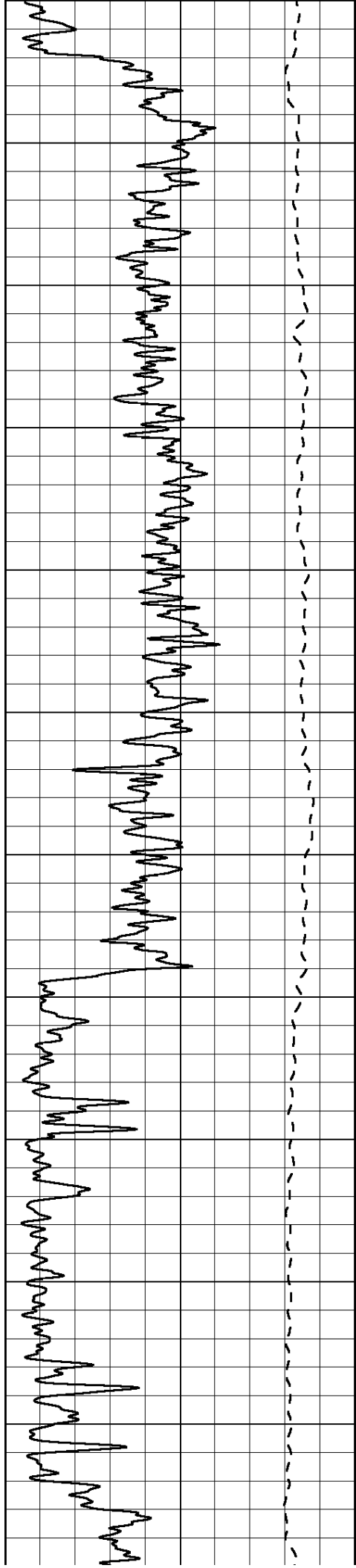
Shallow Resistivity		
50	(Ohm-m)	500
50	Deep Resistivity (Ohm-m)	500

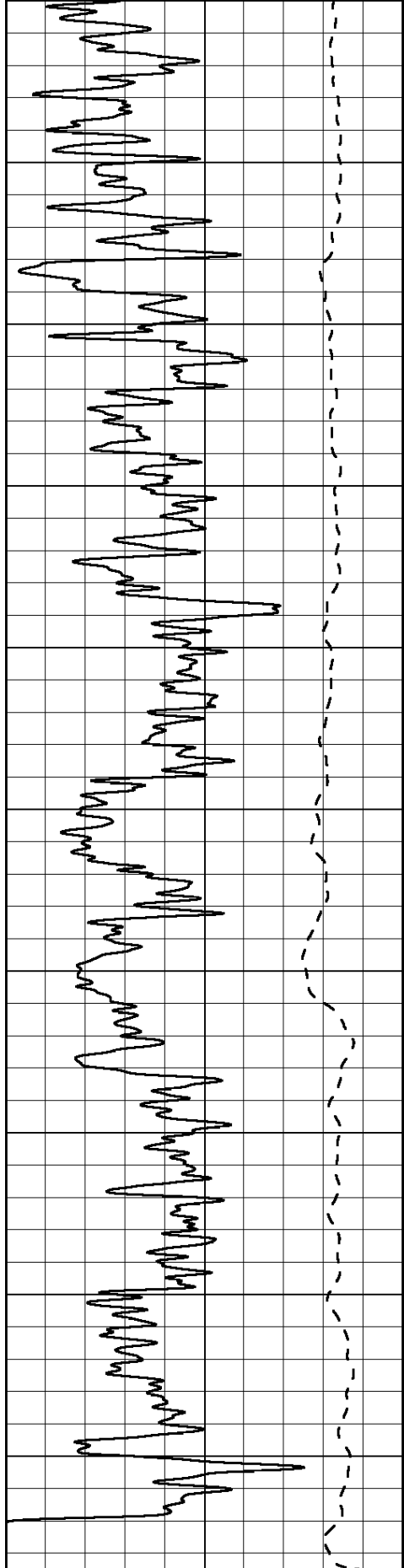




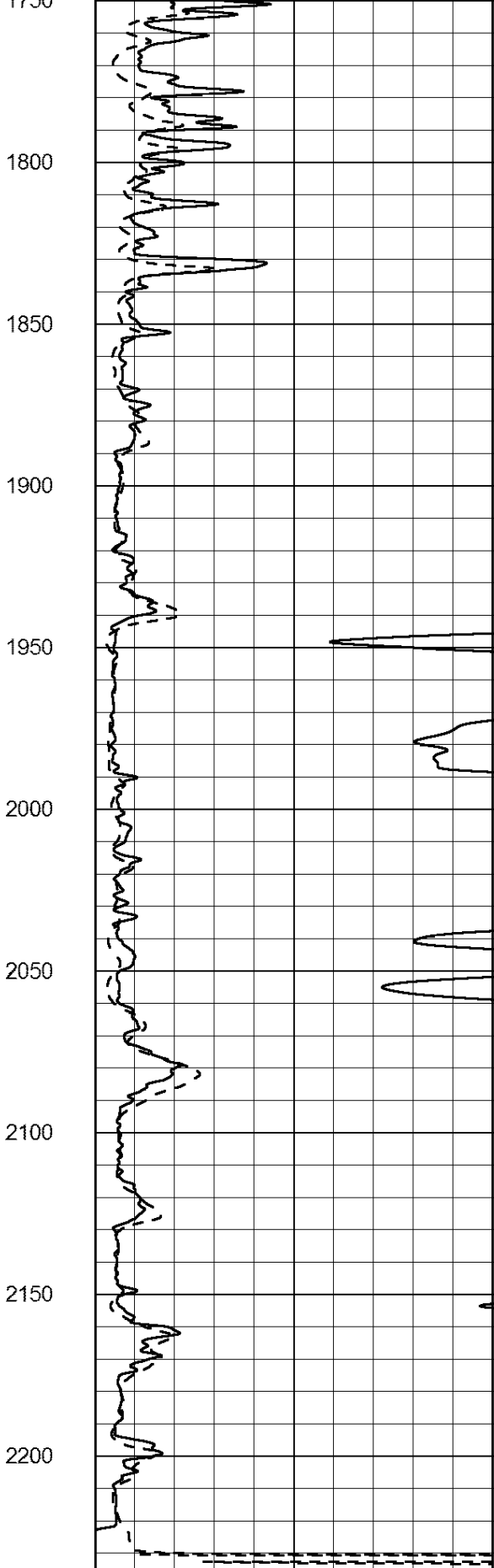
650
700
750
800
850
900
950
1000
1050
1100
1150
1200



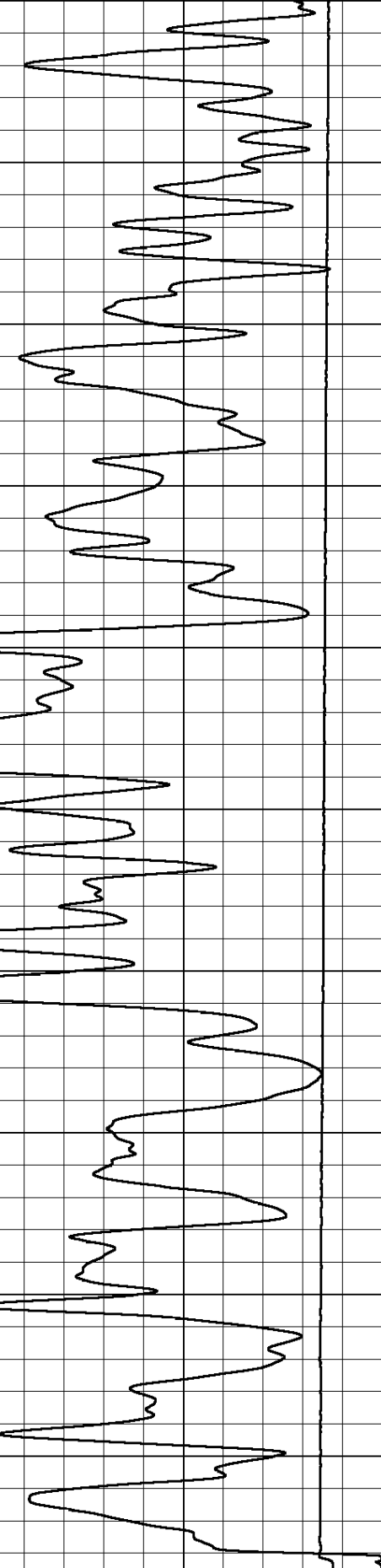




0 Gamma Ray (GAPI) 150
 -200 SP (mV) 0



0 Shallow Resistivity (Ohm-m) 50
 0 Deep Resistivity (Ohm-m) 50



1000 Conductivity (mmho/m) 0
 15000 Line Tension (lb) 0

Shallow Resistivity
 (Ohm-m) 500

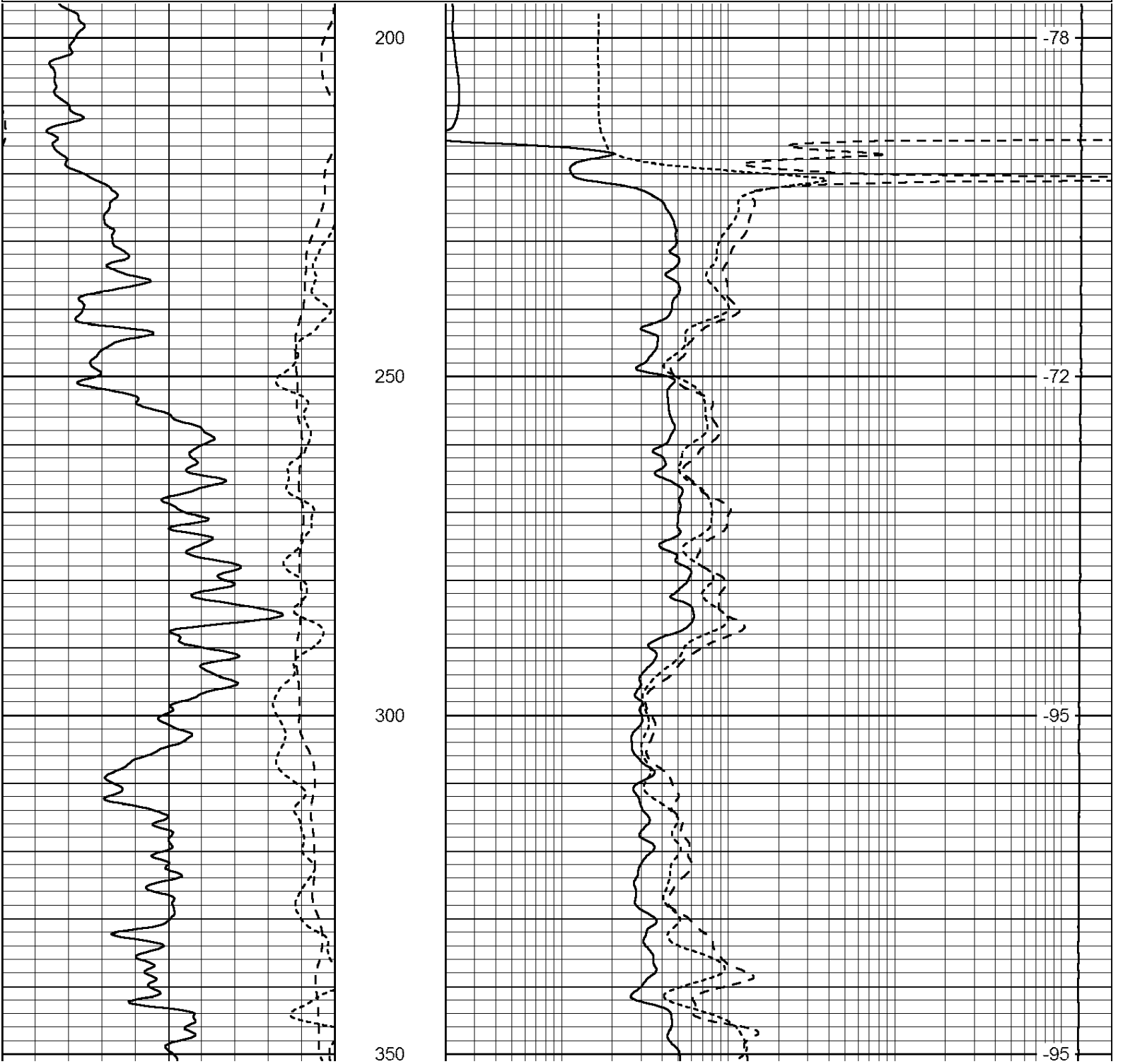
50 (Ohm-m) 500
 50 Deep Resistivity (Ohm-m) 500

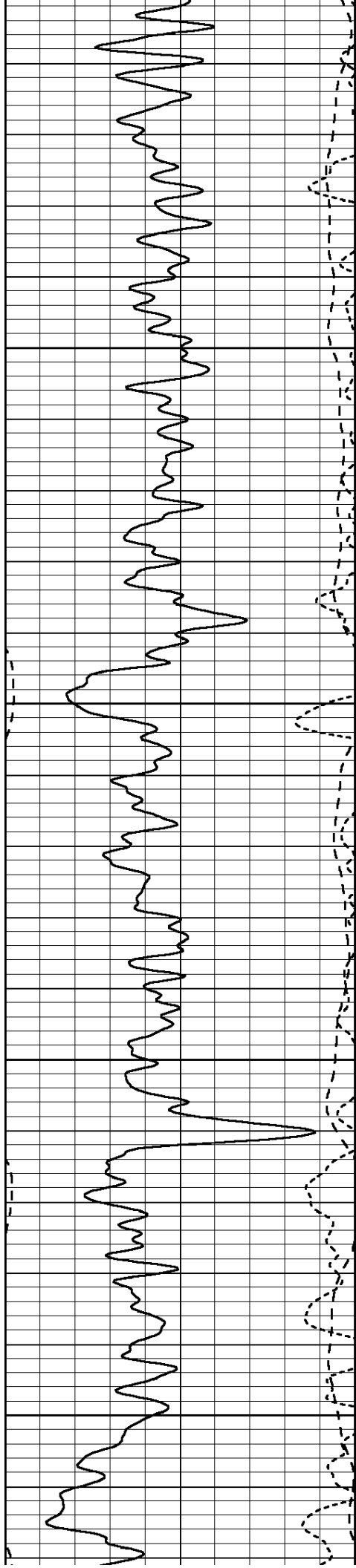
Database File: venture_ridler g- swd2.db
 Dataset Pathname: dil/pass2
 Presentation Format: dil
 Dataset Creation: Wed Oct 26 10:43:21 2011 by Log Open-Cased 090629
 Charted by: Depth in Feet scaled 1:240

0	Gamma Ray (GAPI)	150
-160	RXO/RT	40
-200	SP (mV)	0

0.2	Deep Resistivity (Ohm-m)	2000
0.2	Medium Resistivity (Ohm-m)	2000
0.2	Shallow Resistivity (Ohm-m)	2000
10000	Line Tension (lb)	0

LSPD
(ft/min)



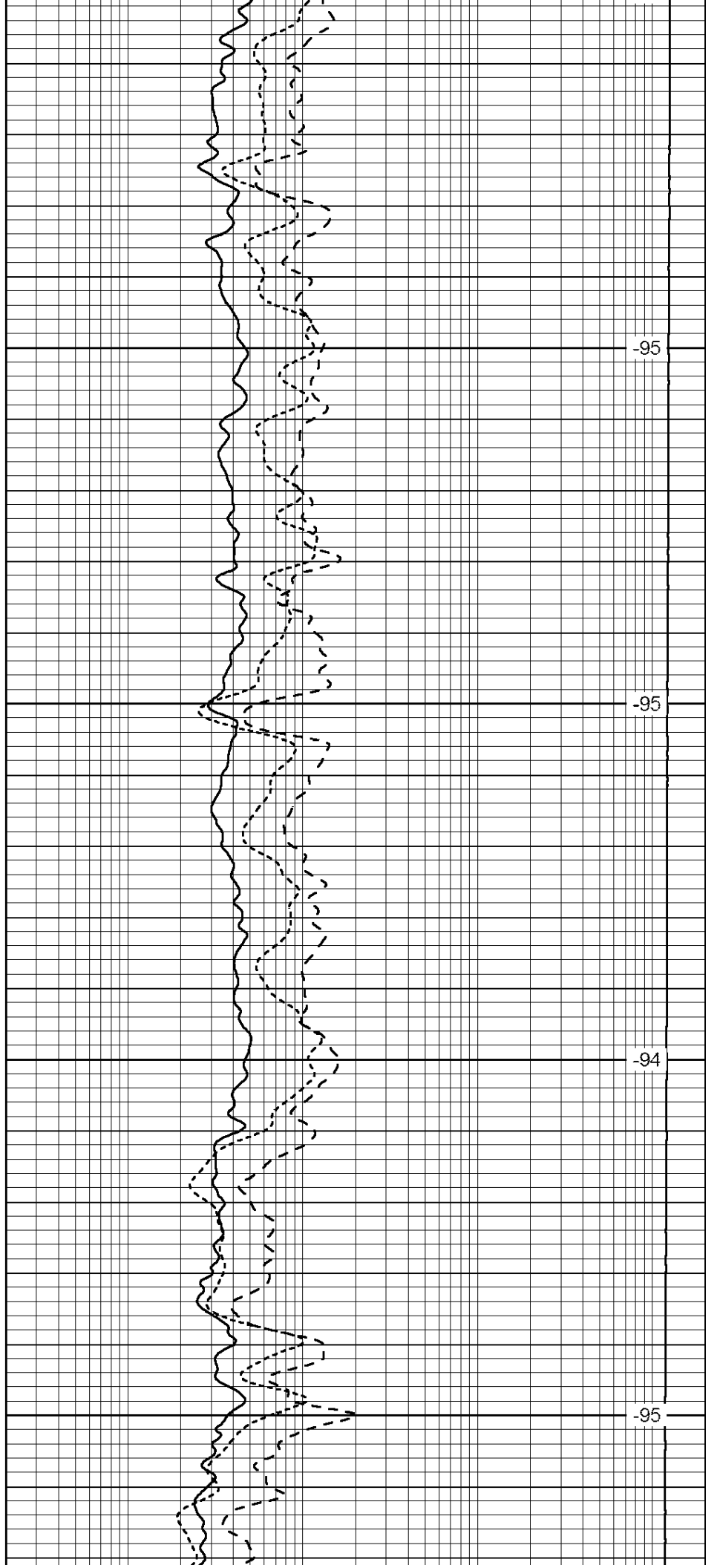


400

450

500

550

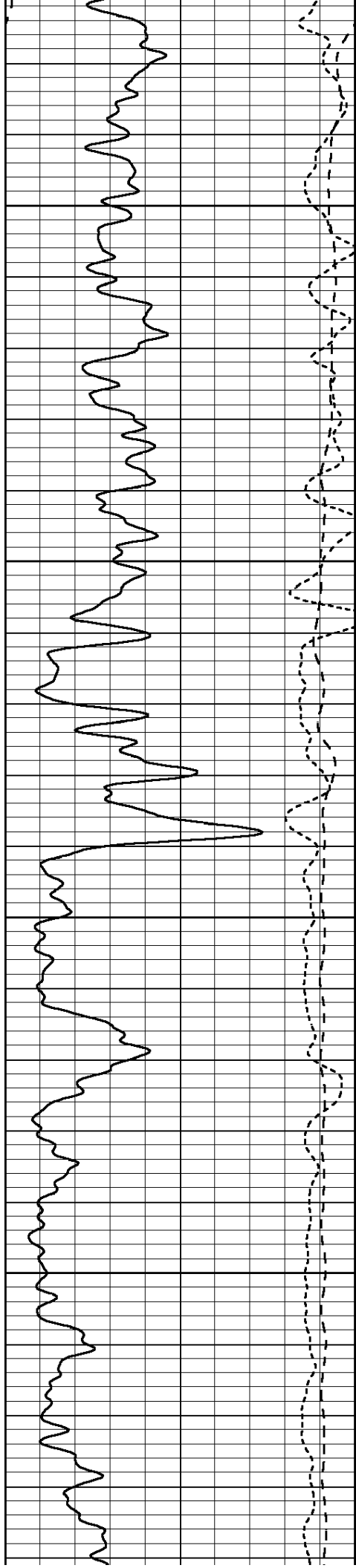


-95

-95

-94

-95

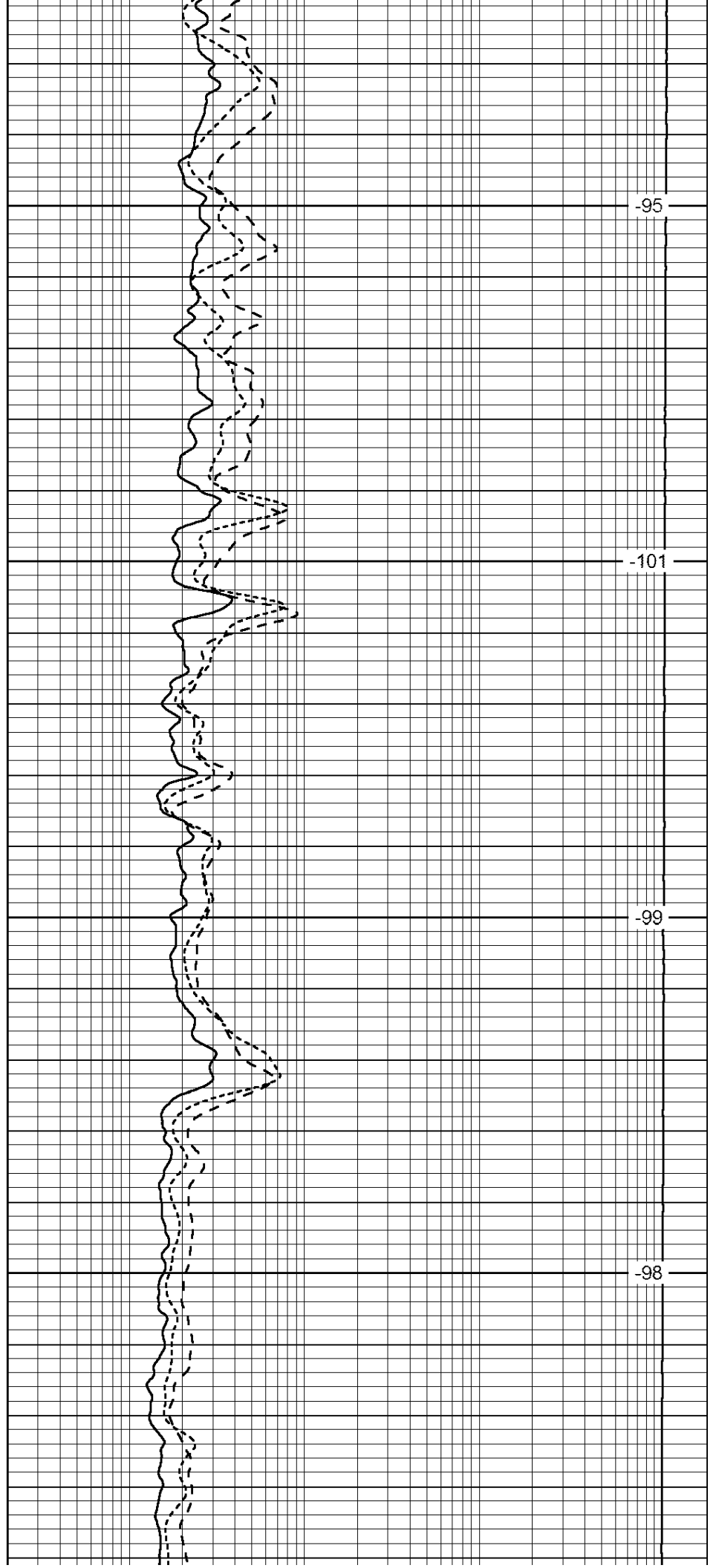


600

650

700

750

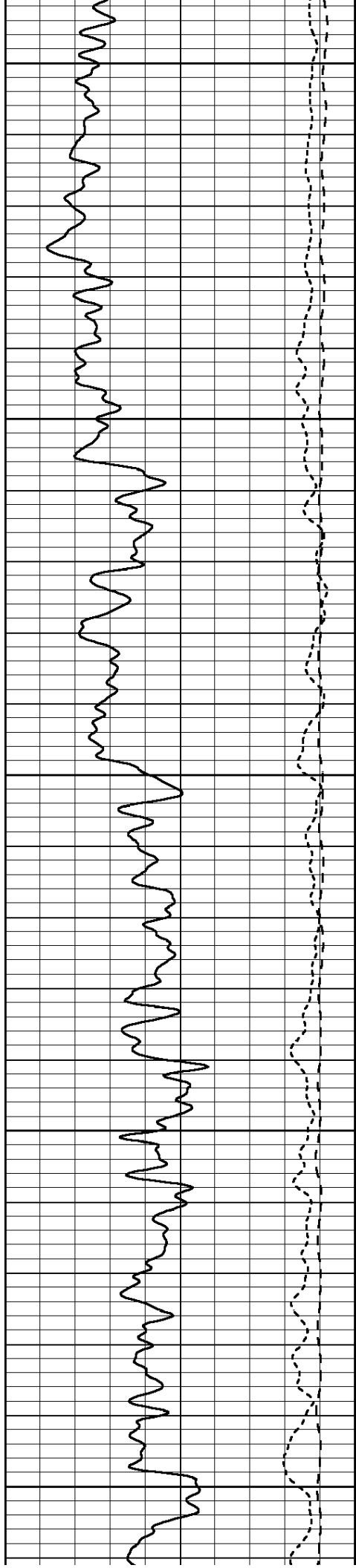


-95

-101

-99

-98



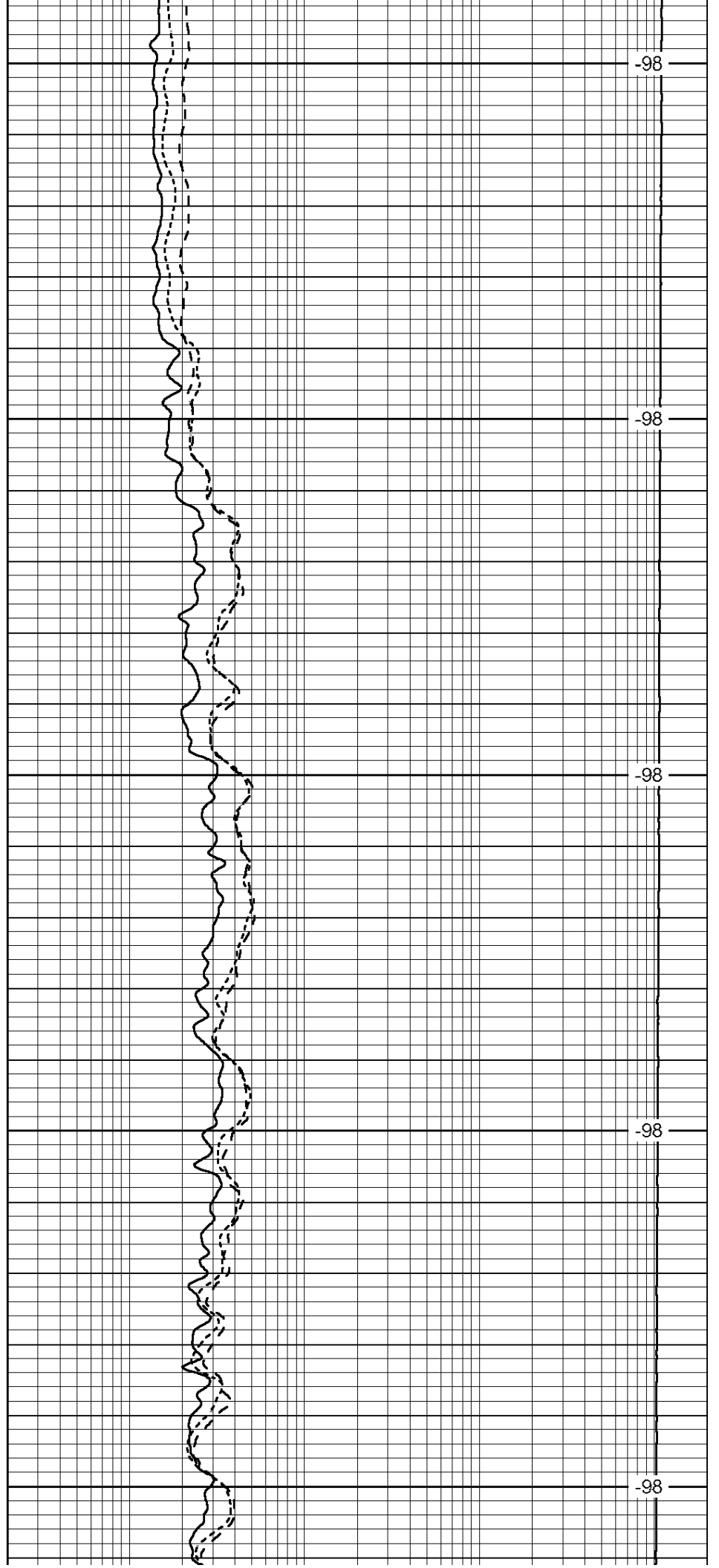
800

850

900

950

1000



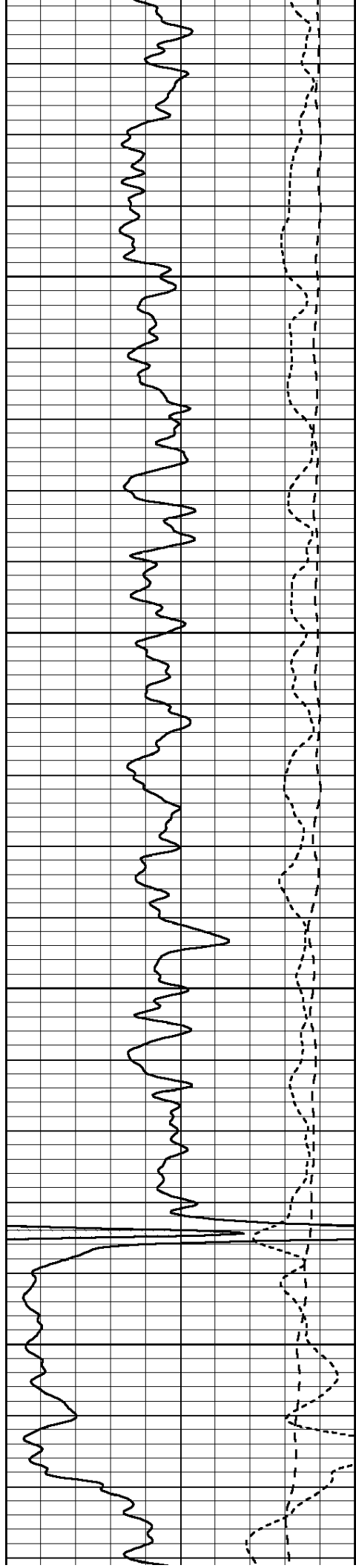
-98

-98

-98

-98

-98

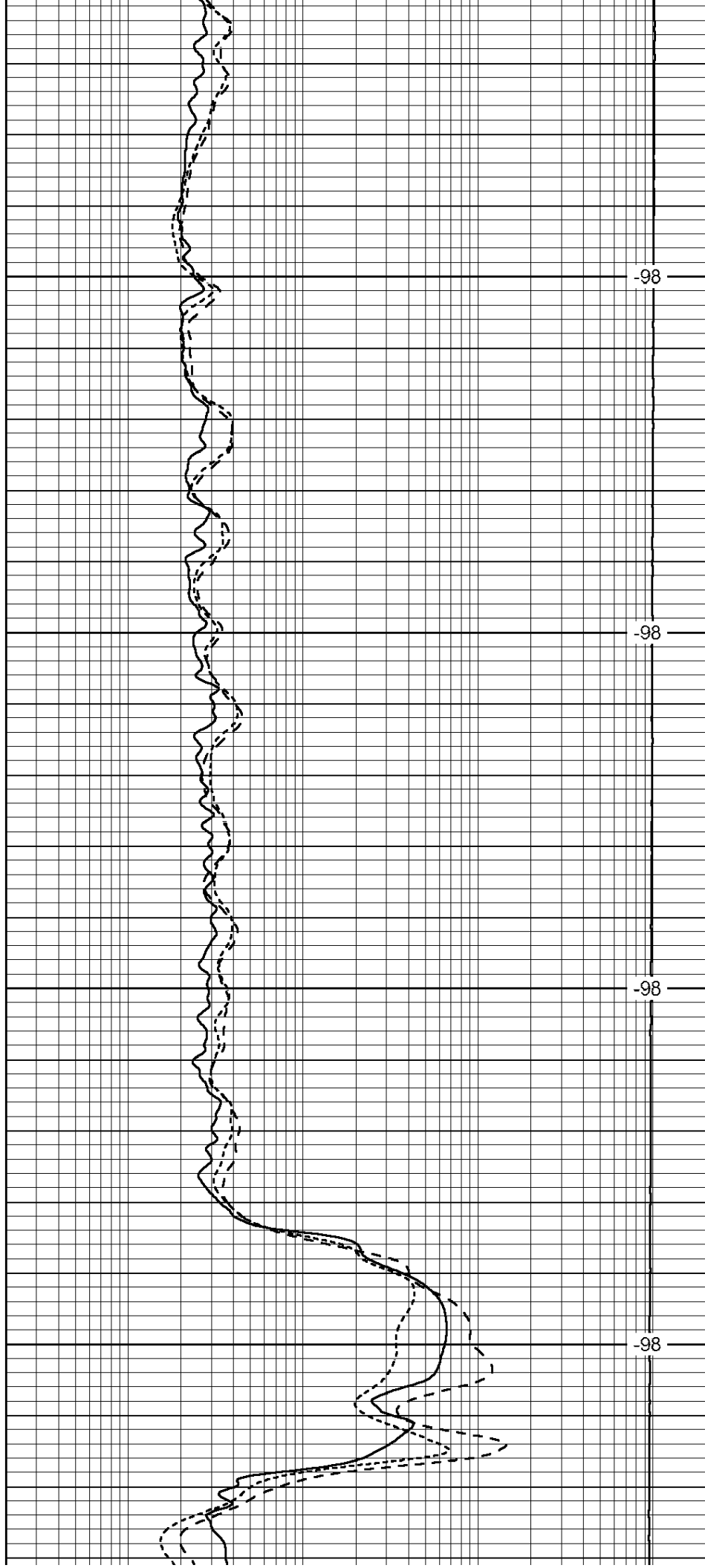


1050

1100

1150

1200

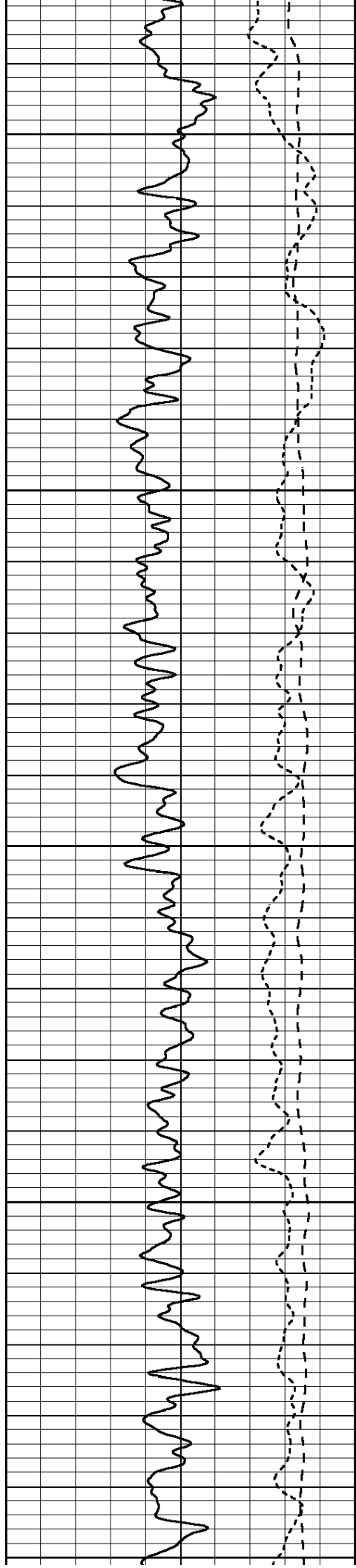


-98

-98

-98

-98



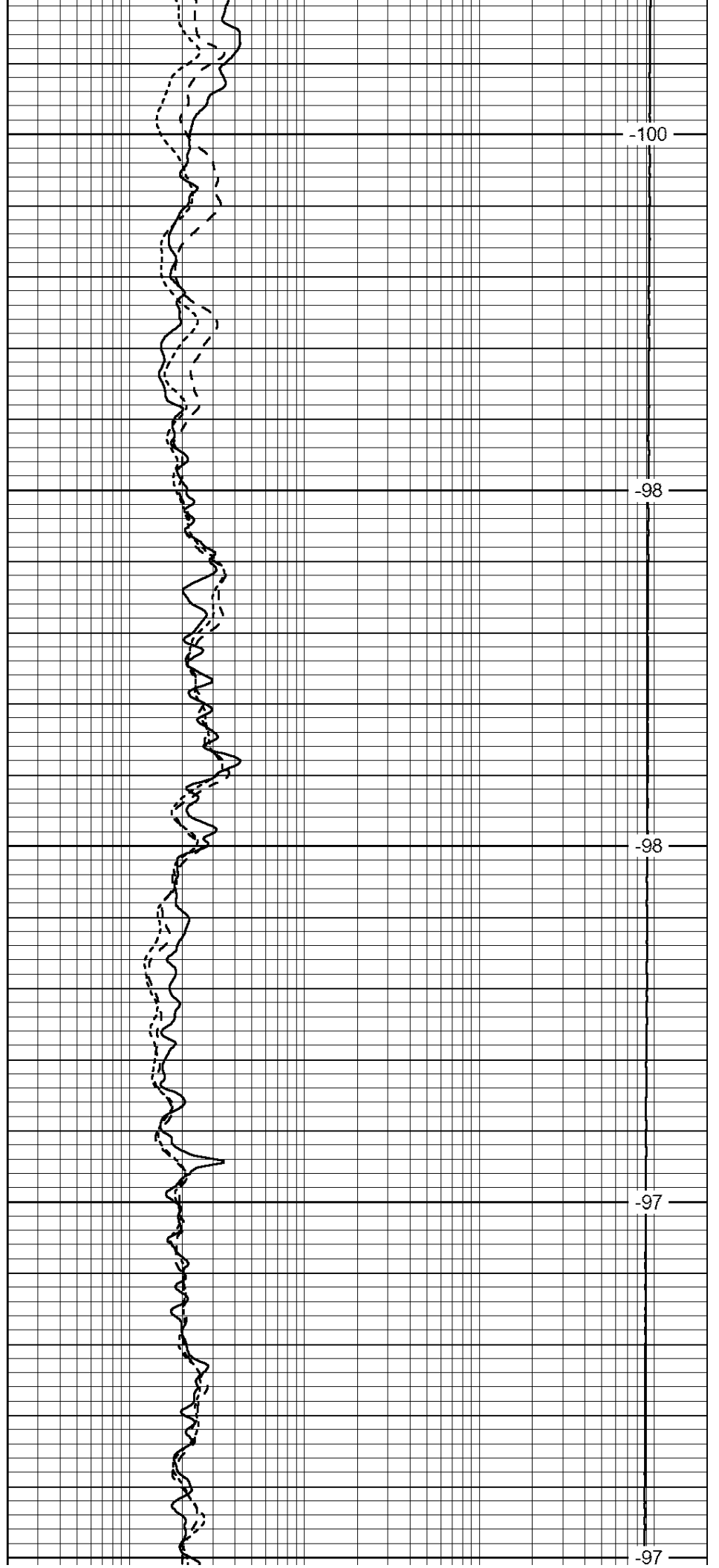
1250

1300

1350

1400

1450



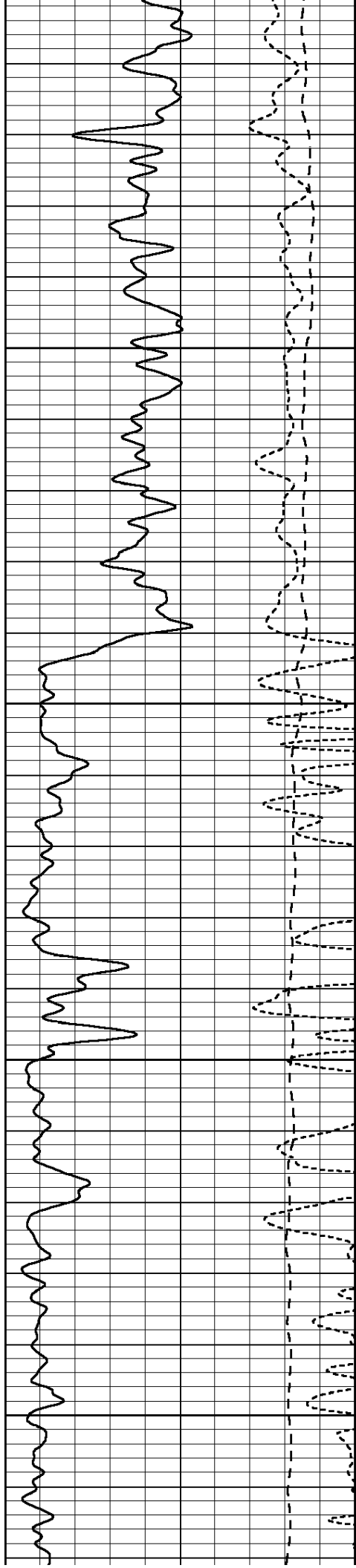
-100

-98

-98

-97

-97

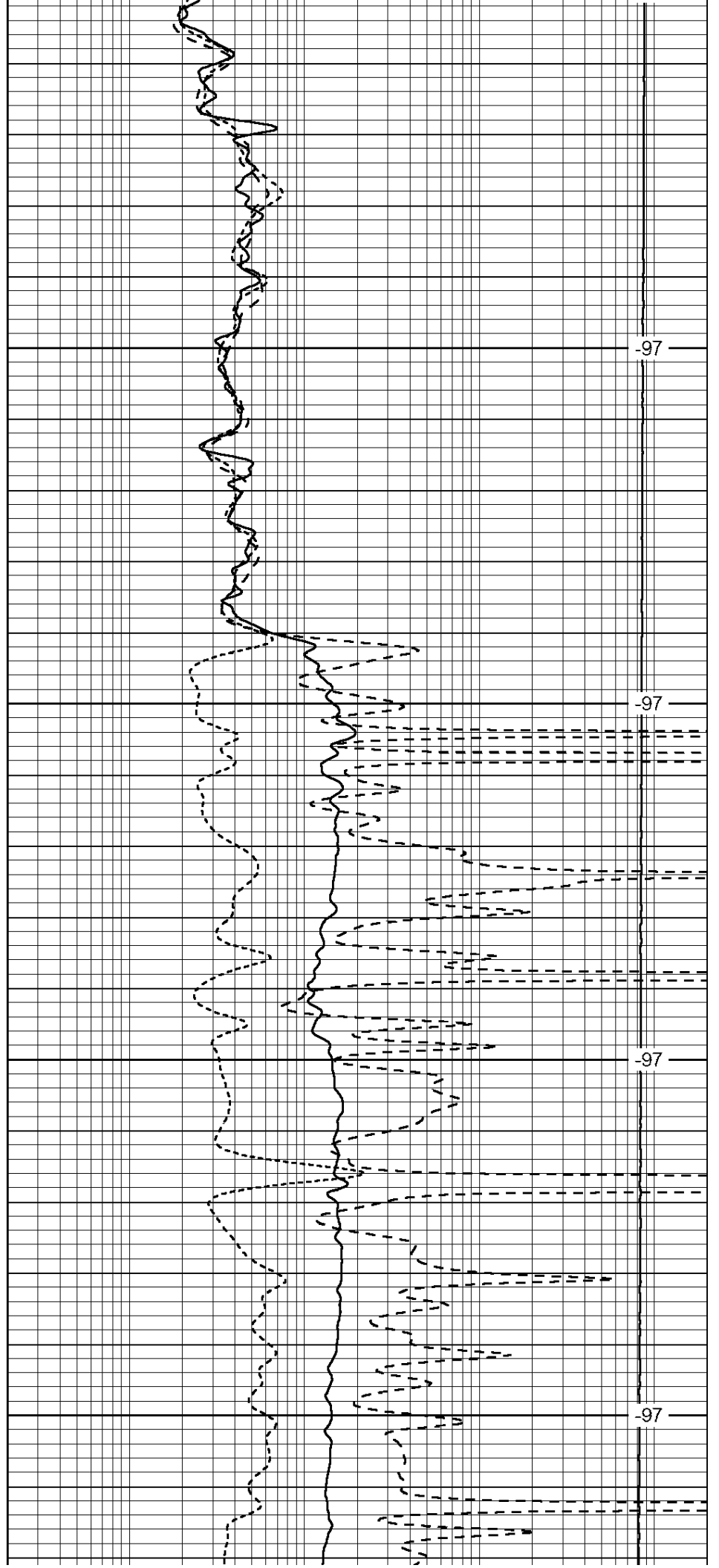


1500

1550

1600

1650

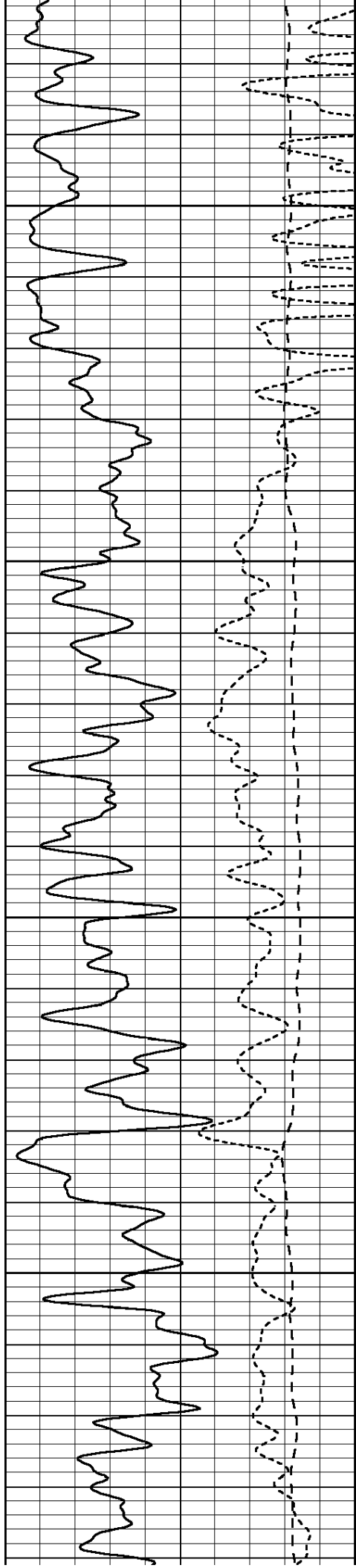


-97

-97

-97

-97

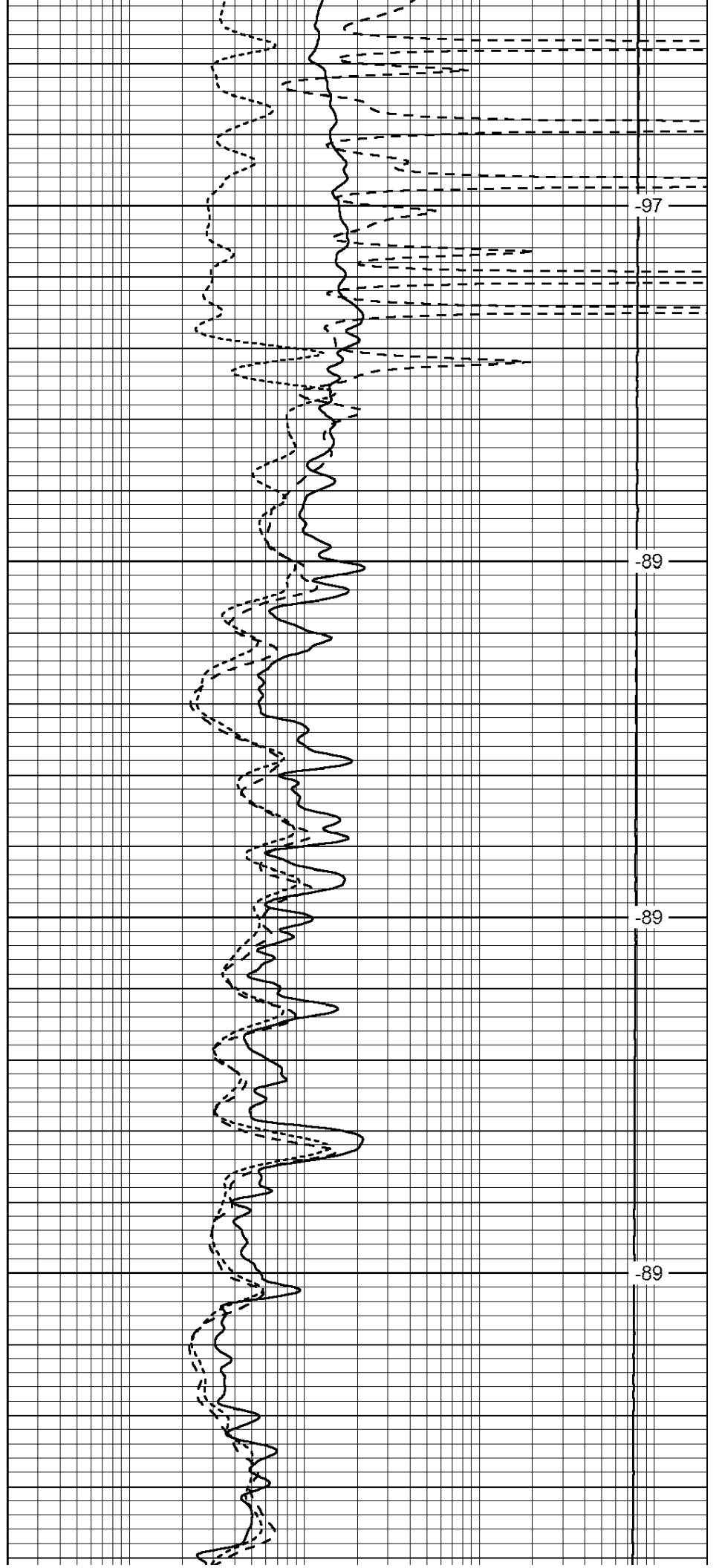


1700

1750

1800

1850

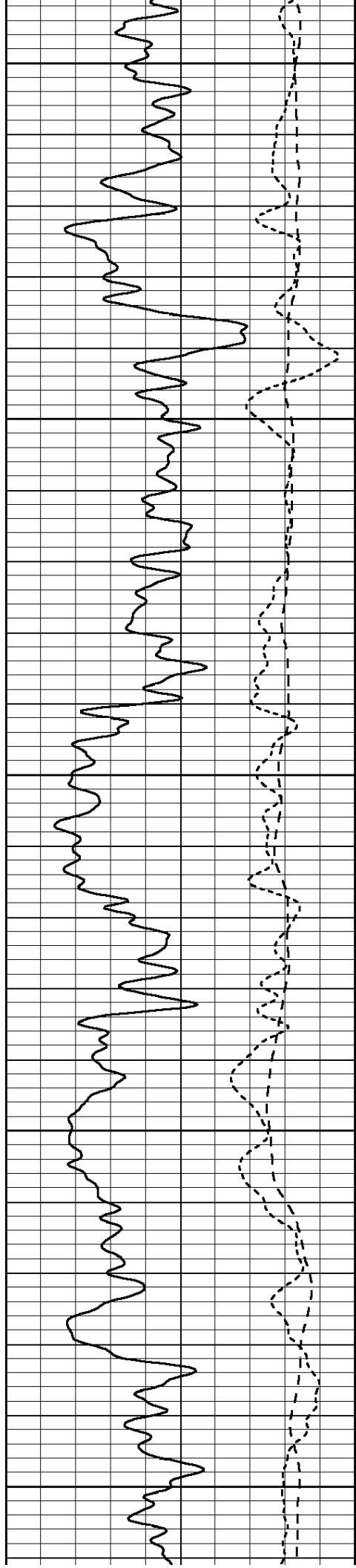


-97

-89

-89

-89



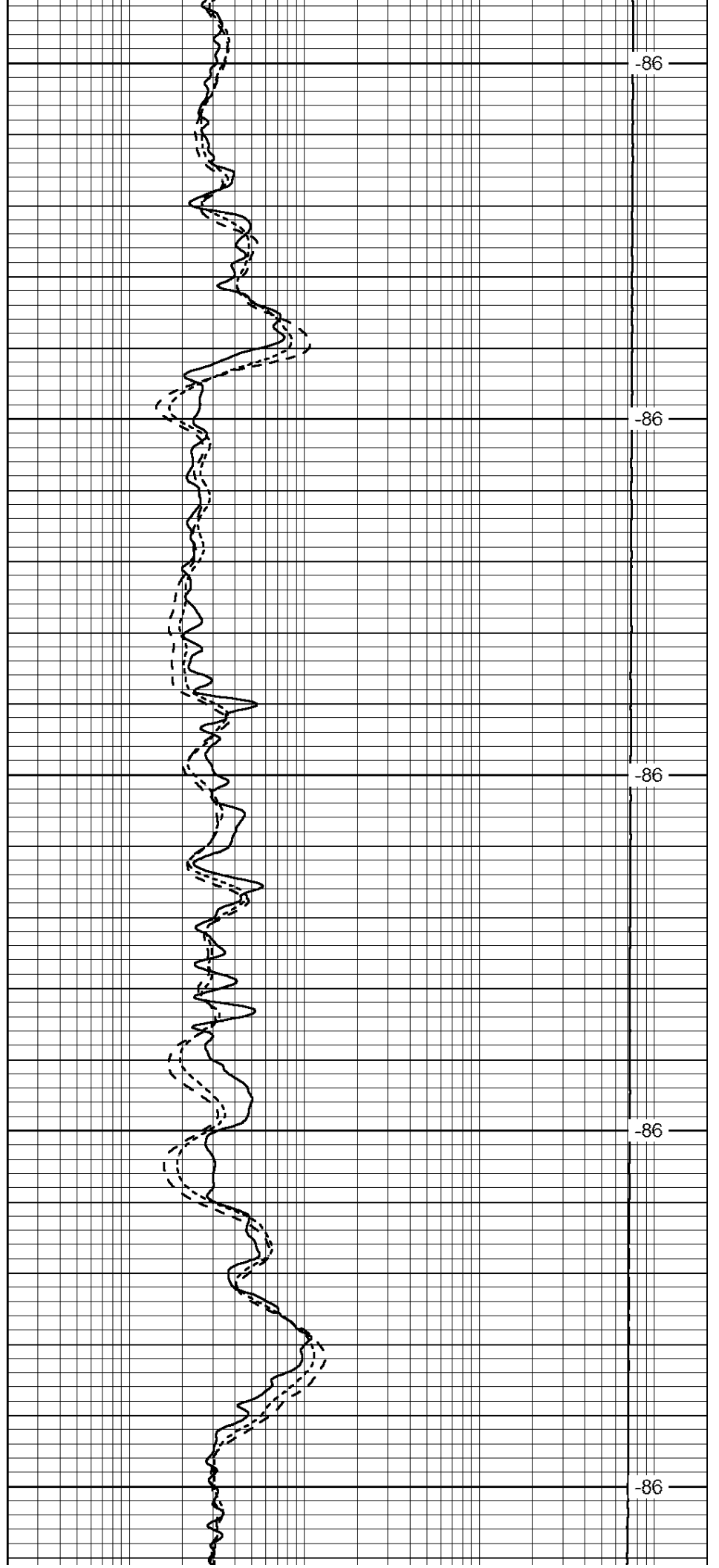
1900

1950

2000

2050

2100



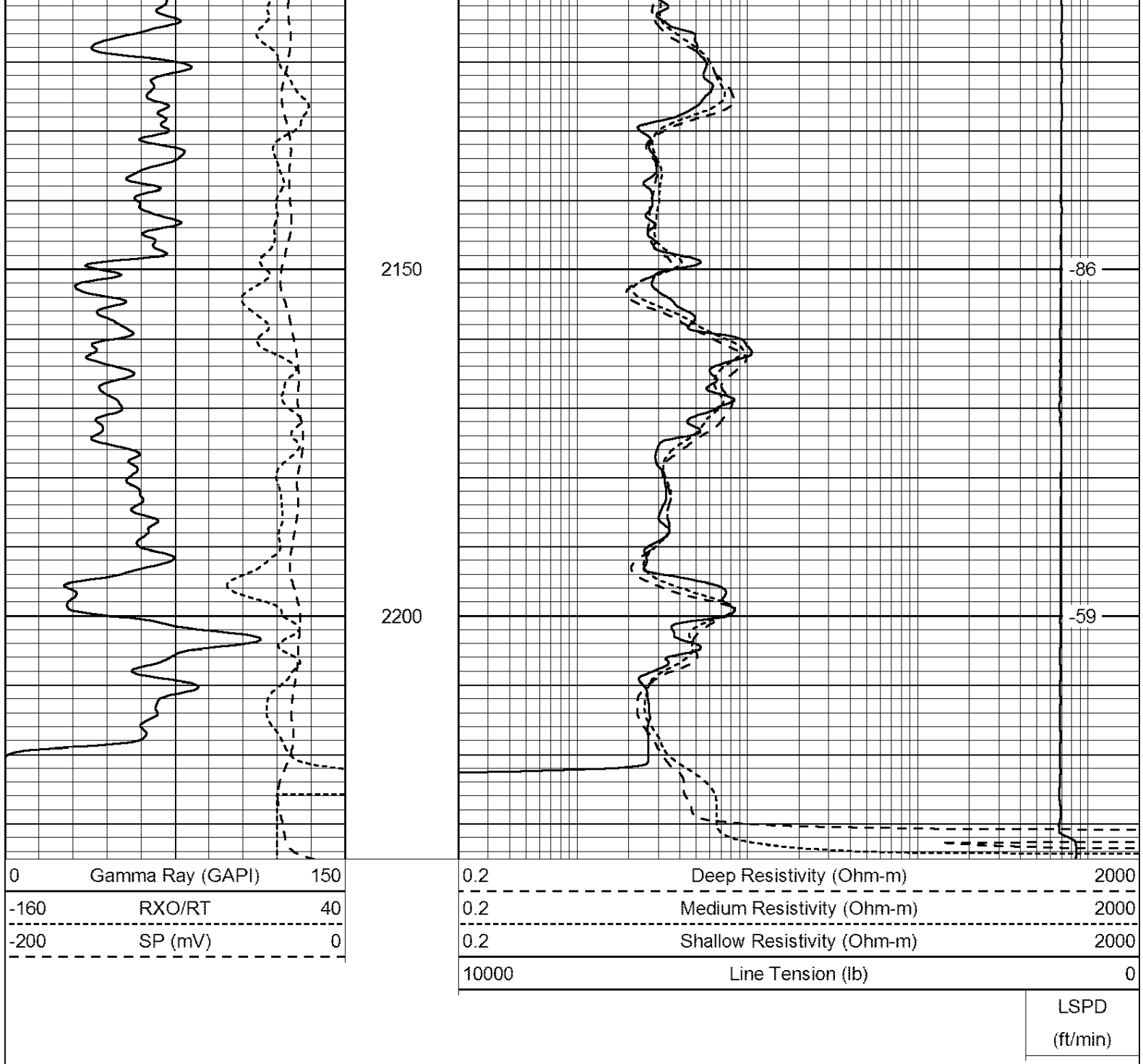
-86

-86

-86

-86

-86



Calibration Report

Database File: venture_ridler g- swd2.db
 Dataset Pathname: dil/pass2
 Dataset Creation: Wed Oct 26 10:43:21 2011 by Log Open-Cased 090629

Dual Induction Calibration Report

Serial-Model: PSI 75-M&W
 Surface Cal Performed:

Loop:	Readings		References		Results		
	Air	Loop	Air	Loop	m	b	
Deep	166.796	835.089	0.000	255.800	mmho/m	0.490	-39.000
Medium	142.009	1348.560	0.000	255.800	mmho/m	0.335	-38.000

Gamma Ray Calibration Report

Serial Number:	233-M&W	
Tool Model:	M&W	
Performed:	Wed Jul 04 16:45:08 2007	
Calibrator Value:	100.0	GAPI
Background Reading:	65.0	cps
Calibrator Reading:	207.0	cps
Sensitivity:	0.5500	GAPI/cps