



GEOLOGIST'S REPORT

OPERATOR: MURFIN DRILLING COMPANY, INC.
LEASE: THORNBERG # 1-6
LOCATION: 2310 FSL & 1000 FWL

SEC: 6 TWP: 8S RGE: 14W
COUNTY: OSBORNE STATE: KANSAS
FIELD: WILD CAT

CONTRACTOR: Mufin Drilling Company
COMMENCED: 1 SEPT 2011
MUD DRILLING: MUD YIELD 9.5 SEPT 2011

DRILLING TIME KEPT FROM: 220 TO 3767
SAMPLES SAVED FROM: 220 TO 3767
SAMPLES EXAMINED FROM: 220 TO 3767

GEOLOGICAL SUPERVISION FROM: 705 TO 3767
GEOLOGIST ON WELL: Paul Gurellman

FORMATION NAME LOG DATUM TOP DATUM
Stones Corral 1122 +732 1129 +825

Base/Anhydrite 1169 +695 1163 +691
Tobacco 2773 -919 2775 -921

Heebner Shale 3005 -1151 3006 -1152
Leaning 3091 -1197 3093 -1199

Base/Kansas City 3328 -1474 3331 -1477
Viola 3588 -1724 3590 -1726

Simpson 3653 -1799 3649 -1795
Amudche 3704 -1850 3700 -1846

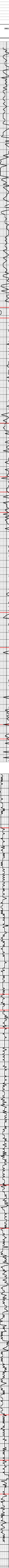
Tidal Depth 3767 -1913 3767 -1913

Log-Tech, Inc.
Comp. Neutron Density

ELONGATION: 1854 FT.
ELEVATION: 1854 FT.
CORRELATION: 1849 FT.

REMARKS
API 15-141-20436-00-00
Drilling Fluids: Mud-Co/Service Mud, Inc. (Gary Schmittberger, engineer)
Drill Stem Testing: Tribotite Testing, Inc. (Brett Dickinson, tester)
Gas Tracer: Earth-Tech O.G., Inc. (unmanned)
Reserve Pit Chlorides: 21,000 ppm.

Table with 4 columns: DRILL TIME (MIN/FT), DEPTH, SAMPLE DESCRIPTIONS, REMARKS



Sample descriptions and geological notes for each depth interval, including lithology and mineralogy.

Remarks section detailing well parameters, fluid properties, and test results.

Geological observations and interpretations related to the well's stratigraphy.

Additional remarks and data points from the well log.

Notes on well completion and production data.

Summary of well performance and recommendations.

Final remarks and conclusions from the geologist's report.

Operator: MURFIN DRILLING COMPANY, INC.
Lease: THORNBERG # 1-6
Location: 2310 FSL & 1000 FWL SEC. 6 TWP: 8S RGE: 14W
County: OSBORNE State: KANSAS