

Scale 1:240 (5"=100') Imperial  
Measured Depth Log

Well Name: # 1-33 Binns  
Location: 1769'FNL, 2383' FEL, 33-15s-33w, Logan County, Kansas  
License Number: API: 15-109-21044  
Spud Date: 10-24-11  
Surface Coordinates: Lat: 38.7089935 Long: -100.9924614  
Bottom Hole Coordinates: Vertical hole

Ground Elevation (ft): 2933' K.B. Elevation (ft): 2944'  
Logged Interval (ft): 3600' To: RTD Total Depth (ft): 4750'  
Formation: Mississippian at RTD  
Type of Drilling Fluid: Chemical

Printed by MUD.LOG from WellSight Systems 1-800-447-1534 www.WellSight.com

**GEOLOGIST**

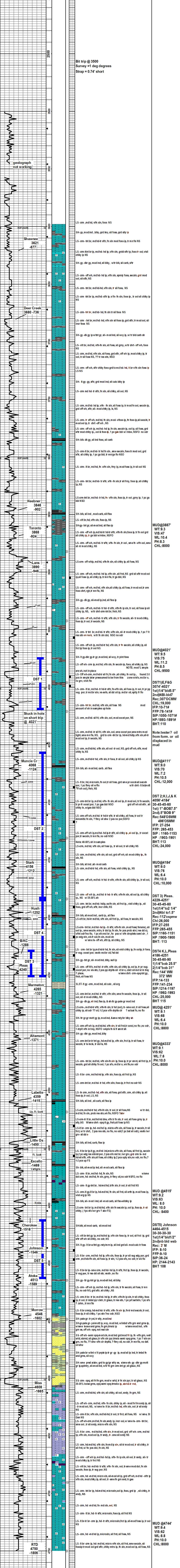
Name: Bob Schreiber  
Company: independent  
Address: 268 NE 220 Rd  
Holsington,KS 67544  
620-653-7691

**COMMENTS**

Contractor: Murfin Drilling Company Rig #22  
Pusher: Kelly Wilson  
Surface Casing: 8 5/8" set at 224' w/165sx  
Production Casing: none,  
Mud by: MudCo  
DST's by: Diamond Testing  
Logs by: Weatherford (DL, CN-CD, ML,SONIC)  
RTD=4750'  
LTD=4749'

**FORMATION TOPS**

FORMATION	SAMPLE TOPS		LOG TOPS	
	Depth	Datum	Depth	Datum
Stone Corral	2314'	+630	2318'	+626
B/Stone Corral	2333'	+611	2333'	+611
Heebner Shale	3847'	-903	3845'	-901
Lansing	3890'	-946	3890'	-946
Muncie Creek Shale	4068'	-1124	4066'	-1122
Stark Shale	4156'	-1212	4156'	-1212
Hushpuckney Shale	4202'	-1258	4194'	-1249
Marmaton	4265'	-1321	4263'	-1319
Upper Fort Scott	4364'	-1420'	4361'	-1417
Little Osage Shale	4394'	-1449'	4392'	-1447
Excello Shale	4413'	-1469	4411'	-1467
Johnson Zone	4490'	-1546	4488'	-1544
Morrow	4546'	-1602'	4542'	-1598
Mississippian	4608'	-1665	4604'	-1661
RTD	4750'	-1806		
LTD			4749'	-1805



**Remarks**

Morning Report Depth/Activity  
10/24/11: MRU Rig #22, spud 7:00 PM, set 8 5/8" @ 224', cmnt w/ 165  
1:15AM, Drig out @ 2:45PM, 10/25/11: PD @ 1635'  
@ 3500' 10/28/11: Drig @ 3421', bit trip  
10/28/11: Drig @ 3852', stuck @ 4021'

Bit trip @ 3500  
Survey = 1 deg degrees  
Strap = 0.74' short

geograph not working

Stuck in hole on short trip @ 4021'

MUD@3887'  
WT:9.3  
VIS:47  
WL:10.4  
PH:8.3  
CHL:8000

DST1)E,F&G  
3074'-4021'  
30-45-45-60  
2nd)NBI-bld7.5"  
Rec:307'OCMW  
CHL:19,000  
IFP:19-71#  
SIP:1050-1071#  
HP:1893-1891#  
BHT:110

Note:tester? oil from form. or oil displaced in mud

MUD@4111'  
WT:9.0  
VIS:70  
WL:7.2  
PH:10.5  
CHL:12,000

DST 2:H,J, & K  
4056'-4184'  
30-45-45-60  
1st)1/4"bld5.5"  
2nd)5"BOB 9"  
Rec:548'OSWM  
496'OSMW  
IFP:27-255  
FFP:265-455  
SIP:1160-1151  
HP:1903-1901  
BHT:113  
CHL:24,000

MUD@4184'  
WT:9.0  
VIS:76  
WL:6.4  
PH:10.0  
CHL:10,000

DST 3) Pleas.  
4229-4251'  
30-45-45-60  
1st)1/4"bld5.5"  
2nd)NBI to 1.5"  
Rec:112'ospmv  
CHL:26,000  
IFP:27-255  
FFP:265-455  
SIP:1160-1151  
HP:1903-1901  
BHT:113  
CHL:24,000

DST 4 K,L,Pleas  
4186-4251'  
30-45-60-90  
1)1/4"bld5.5"  
2nd)5"BOB 9"  
Rec:144'WM  
372' MW  
IFP:14-133  
FFP:141-234  
SIP:1214-1197  
HP:1992-1993  
CHL:25,000  
BHT 115

MUD@4251'  
WT:9.1  
VIS:68  
WL:6.4  
PH:10.0  
CHL:8000

MUD@4333'  
WT:9.1  
VIS:63  
WL:7.6  
PH:10.0  
CHL:8000

DST5) Johnson  
4464-4510  
30-30-30-30  
1st)1/4"bld12"  
2nd)NBI bld wsb  
Rec: 3' M  
IFP: 8-10  
FFP:39-24  
SIP:2144-2143  
BHT 108

MUD@4744'  
WT:9.4  
VIS:62  
WL:8.8  
PH:10.0  
CHL:8000