



TRILOBITE TESTING, INC.

DRILL STEM TEST REPORT

Murfin Drilling Co inc
 250 N Water
 STE 300
 Wichita Ks. 67202+1216
 ATTN: Paul Gunzelman

3-14s-19w Ellis
Stadelman Unit 1-3
 Job Ticket: 44264 **DST#: 1**
 Test Start: 2011.10.26 @ 14:25:05

GENERAL INFORMATION:

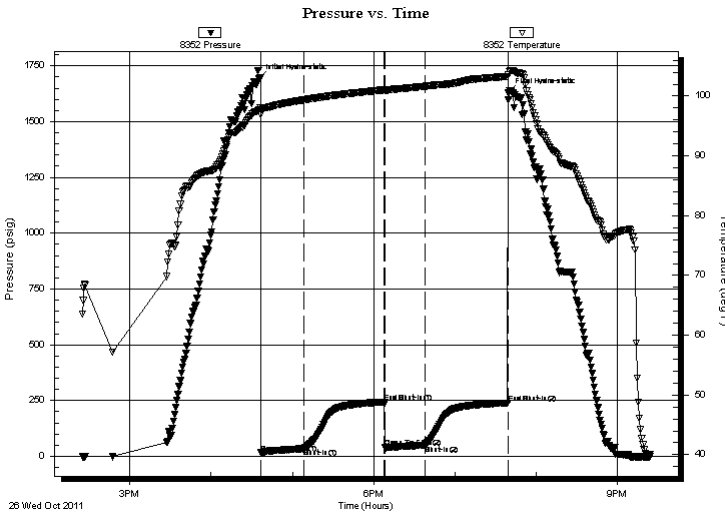
Formation: **Tor-LKC "A-B"**
 Deviated: No Whipstock: ft (KB)
 Time Tool Opened: 16:36:40
 Time Test Ended: 21:24:29
 Interval: **3476.00 ft (KB) To 3563.00 ft (KB) (TVD)**
 Total Depth: 3563.00 ft (KB) (TVD)
 Hole Diameter: 7.88 inches Hole Condition: Poor
 Test Type: Conventional Bottom Hole (Initial)
 Tester: Andy Carreira
 Unit No: 39
 Reference Elevations: 2225.00 ft (KB)
 2215.00 ft (CF)
 KB to GR/CF: 10.00 ft

Serial #: 8352 Outside

Press @ Run Depth: 50.53 psig @ 3480.00 ft (KB) Capacity: 8000.00 psig
 Start Date: 2011.10.26 End Date: 2011.10.26 Last Calib.: 2011.10.26
 Start Time: 14:25:05 End Time: 21:24:29 Time On Btm: 2011.10.26 @ 16:35:30
 Time Off Btm: 2011.10.26 @ 19:39:29

TEST COMMENT: IF:(30min) 2 inch blow
 IS:(60min) No Return
 FF:(30min) Half inch blow
 FS:(60min) No Return

PRESSURE SUMMARY



Time (Min.)	Pressure (psig)	Temp (deg F)	Annotation
0	1692.77	97.75	Initial Hydro-static
2	15.99	96.95	Open To Flow (1)
33	34.39	99.35	Shut-In(1)
93	243.43	101.04	End Shut-In(1)
93	39.40	100.92	Open To Flow (2)
123	50.53	101.64	Shut-In(2)
184	239.56	103.29	End Shut-In(2)
184	1630.75	103.63	Final Hydro-static

Recovery

Length (ft)	Description	Volume (bbl)
65.00	Mud	0.32

Gas Rates

Choke (inches)	Pressure (psig)	Gas Rate (Mcf/d)



**TRILOBITE
TESTING, INC.**

DRILL STEM TEST REPORT

FLUID SUMMARY

Murfin Drilling Co inc

3-14s-19w Ellis

250 N Water
STE 300
Wichita Ks. 67202+1216
ATTN: Paul Gunzelman

Stadelman Unit 1-3

Job Ticket: 44264 **DST#: 1**
Test Start: 2011.10.26 @ 14:25:05

Mud and Cushion Information

Mud Type: Gel Chem	Cushion Type:	Oil API:	deg API
Mud Weight: 9.00 lb/gal	Cushion Length: ft	Water Salinity:	ppm
Viscosity: 59.00 sec/qt	Cushion Volume: bbl		
Water Loss: 6.79 in ³	Gas Cushion Type:		
Resistivity: ohm.m	Gas Cushion Pressure: psig		
Salinity: 3900.00 ppm			
Filter Cake: inches			

Recovery Information

Recovery Table

Length ft	Description	Volume bbl
65.00	Mud	0.320

Total Length: 65.00 ft Total Volume: 0.320 bbl

Num Fluid Samples: 0 Num Gas Bombs: 0 Serial #:

Laboratory Name: Laboratory Location:

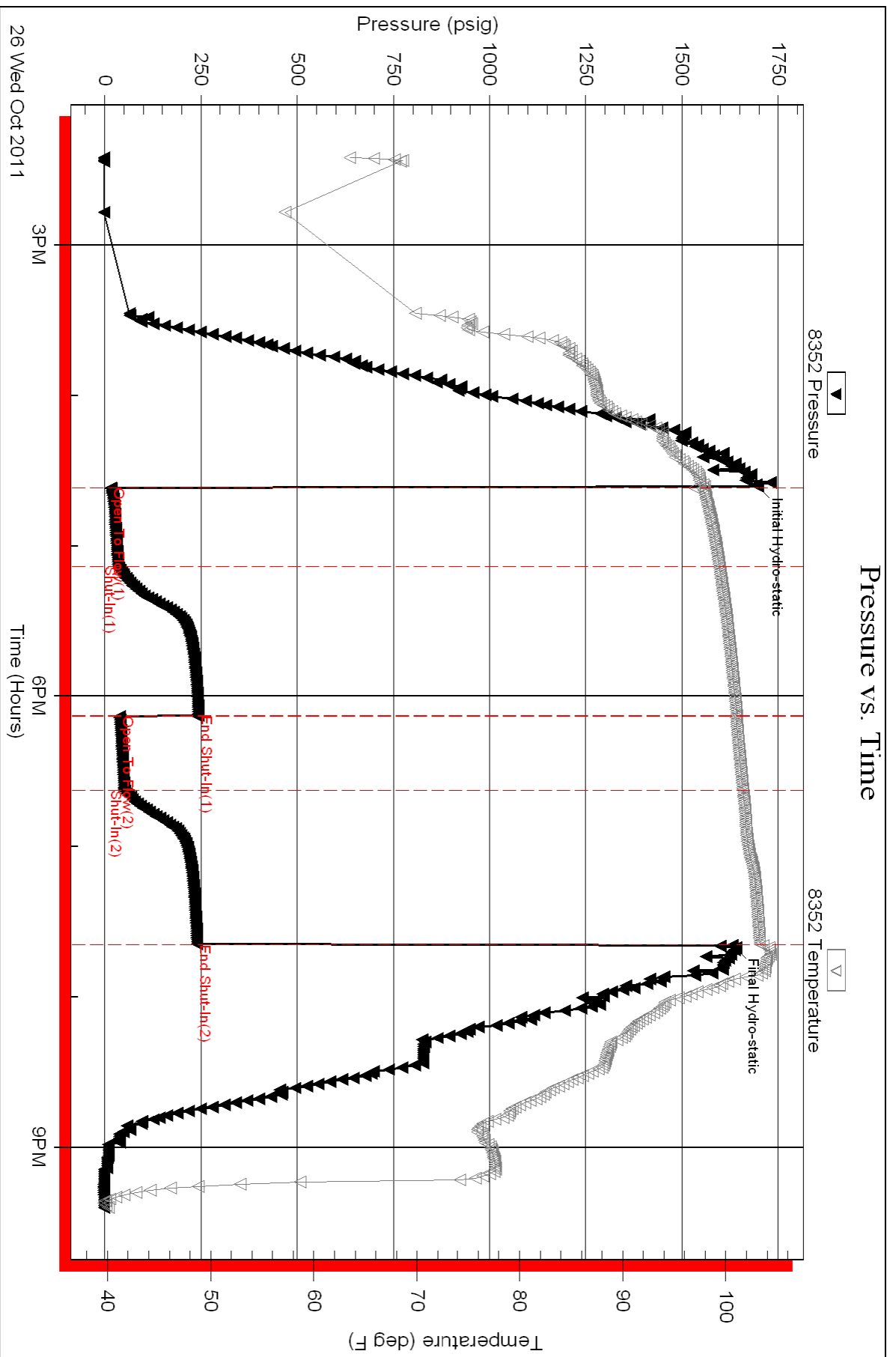
Recovery Comments:

Serial #: 8352

Outside Murfin Drilling Co inc

Stadelman Unit 1-3

DST Test Number: 1



Triobite Testing, Inc

Ref. No: 44264

Printed: 2011.10.27 @ 08:26:09



TRILOBITE TESTING, INC.

DRILL STEM TEST REPORT

Murfin Drilling Co inc
 250 N Water
 STE 300
 Wichita Ks. 67202+1216
 ATTN: Paul Gunzelman

3-14s-19w Ellis
Stadelman Unit 1-3
 Job Ticket: 44265 **DST#: 2**
 Test Start: 2011.10.27 @ 05:25:05

GENERAL INFORMATION:

Formation: **LKC"D-F"**
 Deviated: No Whipstock: ft (KB)
 Time Tool Opened: 07:31:50
 Time Test Ended: 12:01:59
 Interval: **3562.00 ft (KB) To 3606.00 ft (KB) (TVD)**
 Total Depth: 3606.00 ft (KB) (TVD)
 Hole Diameter: 7.88 inches Hole Condition: Poor
 Test Type: Conventional Bottom Hole (Reset)
 Tester: Andy Carreira
 Unit No: 39
 Reference Elevations: 2225.00 ft (KB)
 2215.00 ft (CF)
 KB to GR/CF: 10.00 ft

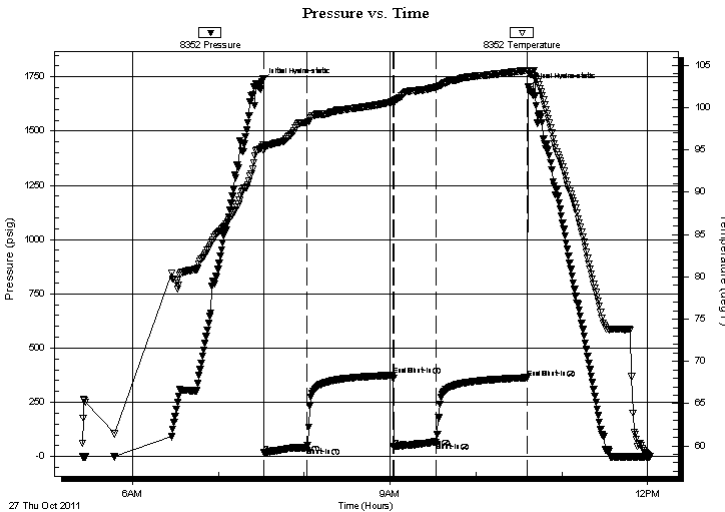
Serial #: 8352

Outside

Press @ RunDepth: 65.57 psig @ 3566.00 ft (KB)
 Start Date: 2011.10.27 End Date: 2011.10.27
 Start Time: 05:25:05 End Time: 12:01:59
 Capacity: 8000.00 psig
 Last Calib.: 2011.10.27
 Time On Btm: 2011.10.27 @ 07:30:20
 Time Off Btm: 2011.10.27 @ 10:36:20

TEST COMMENT: IF:(30min) 3" blow in 28 min
 IS:(60min) No Return
 FF:(30min) 3/4" blow
 FS:(60min) Surface return last 10 min

PRESSURE SUMMARY



Time (Min.)	Pressure (psig)	Temp (deg F)	Annotation
0	1726.08	95.32	Initial Hydro-static
2	16.42	94.95	Open To Flow (1)
32	41.33	98.28	Shut-In(1)
92	374.16	100.73	End Shut-In(1)
92	43.46	100.55	Open To Flow (2)
122	65.57	102.45	Shut-In(2)
186	362.84	104.42	End Shut-In(2)
186	1702.45	104.40	Final Hydro-static

Recovery

Length (ft)	Description	Volume (bbl)
65.00	MW w/slight oil specks in tool m=40%w =60.32	

* Recovery from multiple tests

Gas Rates

Choke (inches)	Pressure (psig)	Gas Rate (Mcf/d)



**TRILOBITE
TESTING, INC.**

DRILL STEM TEST REPORT

FLUID SUMMARY

Murfin Drilling Co inc

3-14s-19w Ellis

250 N Water
STE 300
Wichita Ks. 67202+1216
ATTN: Paul Gunzelman

Stadelman Unit 1-3

Job Ticket: 44265 **DST#: 2**
Test Start: 2011.10.27 @ 05:25:05

Mud and Cushion Information

Mud Type: Gel Chem	Cushion Type:	Oil API:	deg API
Mud Weight: 9.00 lb/gal	Cushion Length: ft	Water Salinity:	16000 ppm
Viscosity: 62.00 sec/qt	Cushion Volume: bbl		
Water Loss: 6.40 in ³	Gas Cushion Type:		
Resistivity: ohm.m	Gas Cushion Pressure: psig		
Salinity: 3900.00 ppm			
Filter Cake: inches			

Recovery Information

Recovery Table

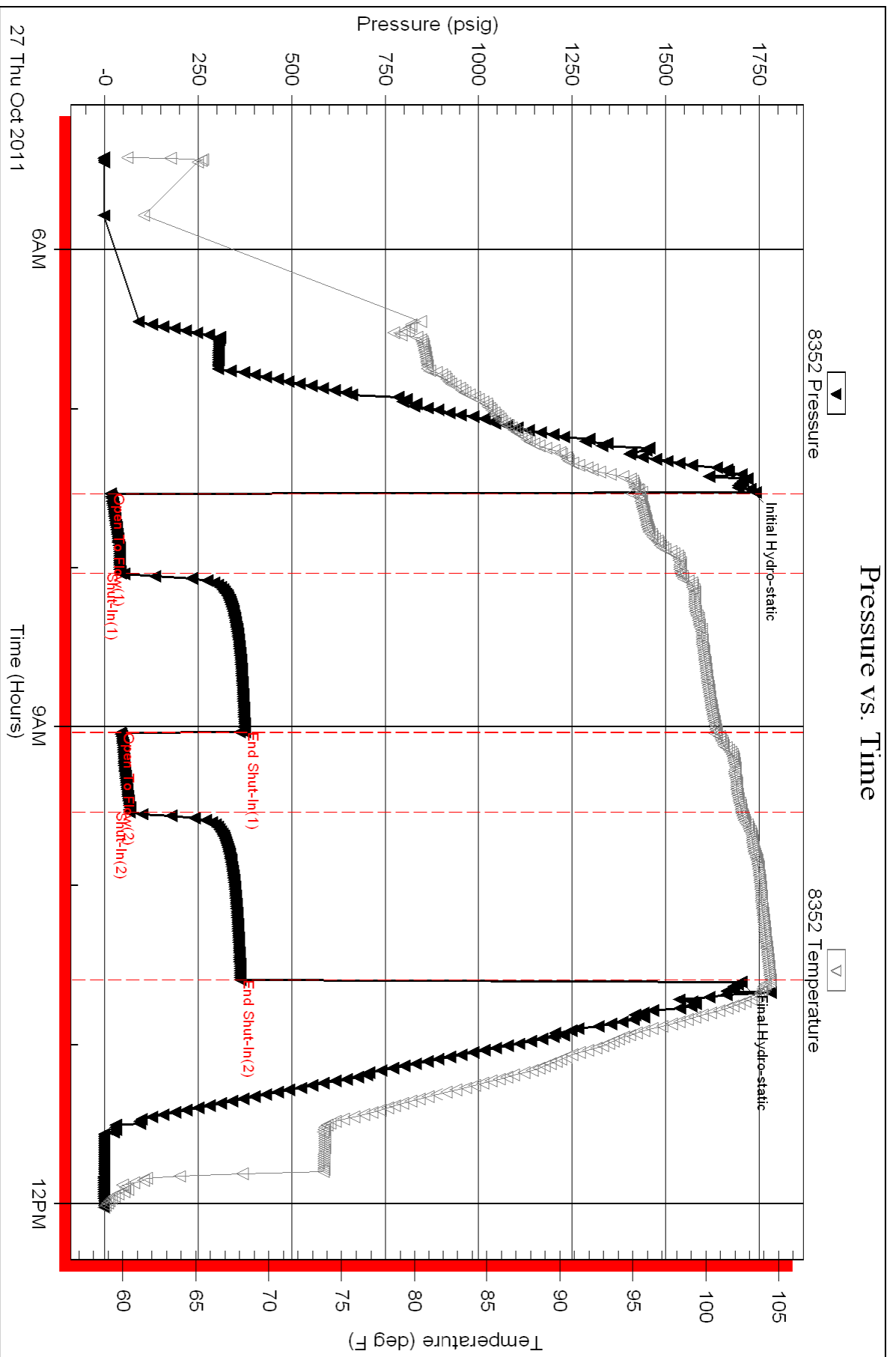
Length ft	Description	Volume bbl
65.00	MW w/slight oil specks in tool m=40%w =60	0.320

Total Length: 65.00 ft Total Volume: 0.320 bbl

Num Fluid Samples: 0 Num Gas Bombs: 0 Serial #:

Laboratory Name: Laboratory Location:

Recovery Comments: Resistivity- .47@51deg=16000





TRILOBITE TESTING, INC.

DRILL STEM TEST REPORT

Murfin Drilling Co inc
 250 N Water
 STE 300
 Wichita Ks. 67202+1216
 ATTN: Paul Gunzelman

3-14s-19w Ellis
Stadelman Unit 1-3
 Job Ticket: 44266 **DST#: 3**
 Test Start: 2011.10.28 @ 00:29:05

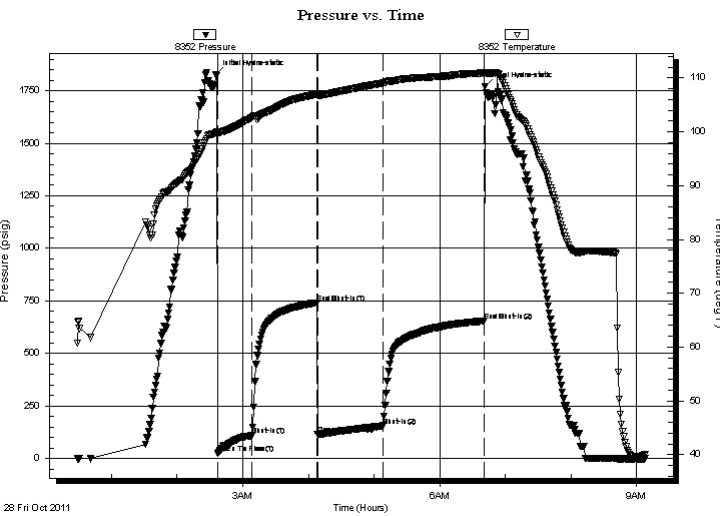
GENERAL INFORMATION:

Formation: **LKC"H,I,J"**
 Deviated: No Whipstock: ft (KB)
 Time Tool Opened: 02:37:10
 Time Test Ended: 09:07:30
 Interval: **3647.00 ft (KB) To 3714.00 ft (KB) (TVD)**
 Total Depth: 3714.00 ft (KB) (TVD)
 Hole Diameter: 7.88 inches Hole Condition: Poor
 Test Type: Conventional Bottom Hole (Reset)
 Tester: Andy Carreira
 Unit No: 39
 Reference Elevations: 2225.00 ft (KB)
 2215.00 ft (CF)
 KB to GR/CF: 10.00 ft

Serial #: 8352 Outside

Press @ Run Depth: 155.10 psig @ 3653.00 ft (KB) Capacity: 8000.00 psig
 Start Date: 2011.10.28 End Date: 2011.10.28 Last Calib.: 2011.10.28
 Start Time: 00:29:05 End Time: 09:07:30 Time On Btm: 2011.10.28 @ 02:35:20
 Time Off Btm: 2011.10.28 @ 06:41:09

TEST COMMENT: IF:(30min) BOB, 17 min
 IS:(60min) No Return
 FF:(60min) BOB, 20min
 FS:(90min) No Return



PRESSURE SUMMARY

Time (Min.)	Pressure (psig)	Temp (deg F)	Annotation
0	1827.58	99.92	Initial Hydro-static
2	22.78	99.60	Open To Flow (1)
34	108.27	102.70	Shut-In(1)
93	741.25	106.99	End Shut-In(1)
94	113.90	106.78	Open To Flow (2)
153	155.10	109.05	Shut-In(2)
246	653.10	110.91	End Shut-In(2)
246	1770.19	111.03	Final Hydro-static

Recovery

Length (ft)	Description	Volume (bbl)
120.00	GMCO g=5% m=20% w=75%	0.59
60.00	GOCWM g=10% o=10% w=20% m=60%	0.31
55.00	GOCM g=10% o=20% m=70%	0.73
5.00	GCO g=10% o=90%	0.07

* Recovery from multiple tests

Gas Rates

Choke (inches)	Pressure (psig)	Gas Rate (Mcf/d)



**TRILOBITE
TESTING, INC.**

DRILL STEM TEST REPORT

FLUID SUMMARY

Murfin Drilling Co inc

3-14s-19w Ellis

250 N Water
STE 300
Wichita Ks. 67202+1216
ATTN: Paul Gunzelman

Stadelman Unit 1-3

Job Ticket: 44266 **DST#: 3**
Test Start: 2011.10.28 @ 00:29:05

Mud and Cushion Information

Mud Type: Gel Chem	Cushion Type:	Oil API:	deg API
Mud Weight: 9.00 lb/gal	Cushion Length: ft	Water Salinity:	30000 ppm
Viscosity: 62.00 sec/qt	Cushion Volume: bbl		
Water Loss: 6.40 in ³	Gas Cushion Type:		
Resistivity: ohm.m	Gas Cushion Pressure: psig		
Salinity: 3900.00 ppm			
Filter Cake: inches			

Recovery Information

Recovery Table

Length ft	Description	Volume bbl
120.00	GMCO g=5% m=20% w =75%	0.590
60.00	GOCWM g=10% o=10% w =20% m=60%	0.309
55.00	GOCM g=10% o=20% m=70%	0.731
5.00	GCO g=10% o=90%	0.066

Total Length: 240.00 ft Total Volume: 1.696 bbl

Num Fluid Samples: 0 Num Gas Bombs: 0 Serial #:

Laboratory Name: Laboratory Location:

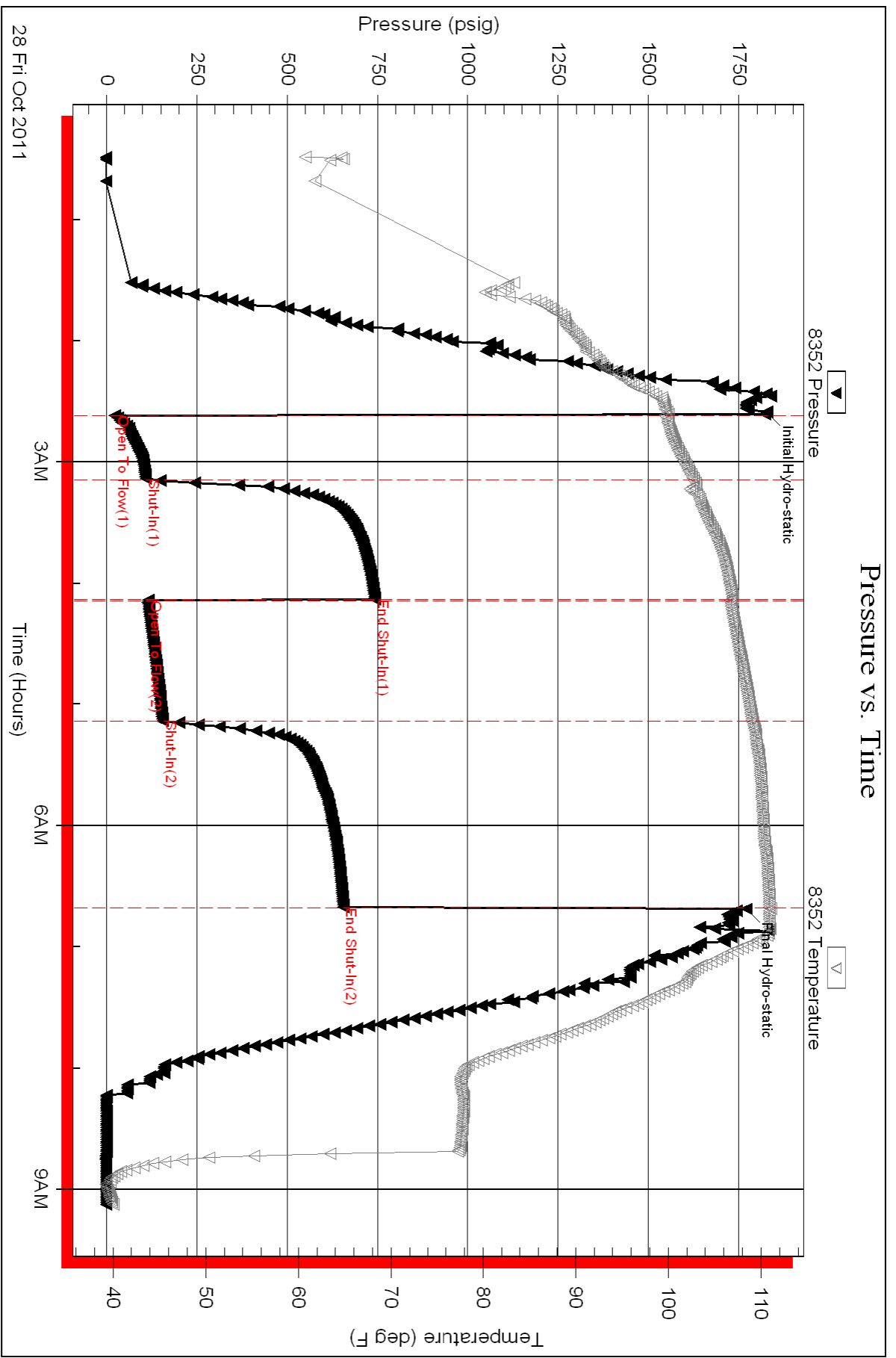
Recovery Comments: Resistivity-.41 @38deg=30000

Serial #: 8352

Outside Murfin Drilling Co inc

Stadelman Unit 1-3

DST Test Number: 3



Triobite Testing, Inc

Ref. No: 44266

Printed: 2011.10.28 @ 15:26:43