



TRILOBITE TESTING, INC.

DRILL STEM TEST REPORT

Murfin Drilling Company
 250 N Water STE 300
 Wichita KS, 67202-1216
 ATTN: Tom Funk

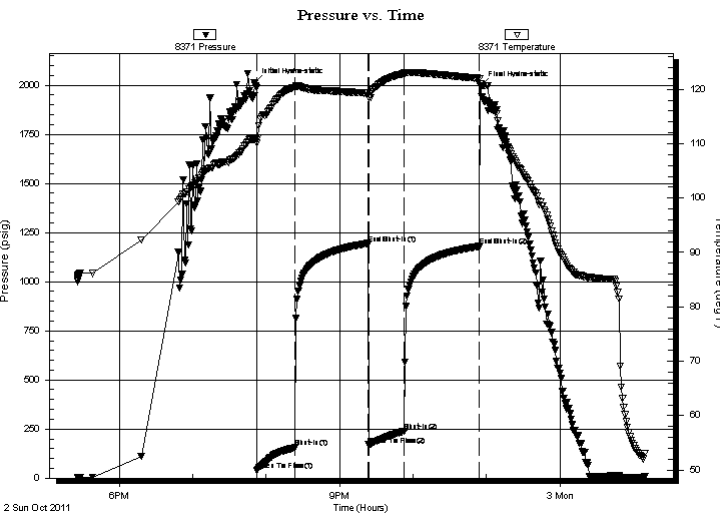
14-10s-34w
Soucie Seele Unit 1-
 Job Ticket: 042127 **DST#: 1**
 Test Start: 2011.10.02 @ 17:26:00

GENERAL INFORMATION:

Formation: **Toronto - Lansing "A"**
 Deviated: No Whipstock: ft (KB)
 Time Tool Opened: 19:52:30
 Time Test Ended: 01:09:30
 Interval: **ft (KB) To ft (KB) (TVD)**
 Total Depth: 4167.00 ft (KB) (TVD)
 Hole Diameter: 7.88 inches Hole Condition:
 Test Type: Conventional Bottom Hole (Initial)
 Tester: Jace McKinney
 Unit No: 28
 Reference Elevations: 3217.00 ft (KB)
 3206.00 ft (CF)
 KB to GR/CF: 11.00 ft

Serial #: 8371 Outside
 Press @ Run Depth: 239.34 psig @ 4109.00 ft (KB) Capacity: 8000.00 psig
 Start Date: 2011.10.02 End Date: 2011.10.03 Last Calib.: 2011.10.03
 Start Time: 17:26:01 End Time: 01:09:30 Time On Btm: 2011.10.02 @ 19:50:30
 Time Off Btm: 2011.10.02 @ 22:55:15

TEST COMMENT: B.O.B. in 15 min.
 No return blow
 B.O.B. in 17 min.
 No return blow



PRESSURE SUMMARY

Time (Min.)	Pressure (psig)	Temp (deg F)	Annotation
0	2011.31	110.89	Initial Hydro-static
2	41.56	110.09	Open To Flow (1)
33	155.42	120.36	Shut-In(1)
93	1192.99	119.29	End Shut-In(1)
94	169.73	118.53	Open To Flow (2)
123	239.34	122.83	Shut-In(2)
184	1179.73	121.99	End Shut-In(2)
185	1997.94	121.08	Final Hydro-static

Recovery

Length (ft)	Description	Volume (bbl)
357.00	mcw 10%M 90%W	3.31
124.00	ocmw 10%O 20%M 70%W	1.74
15.00	100% Clean OIL	0.21

Gas Rates

Choke (inches)	Pressure (psig)	Gas Rate (Mcf/d)



**TRILOBITE
TESTING, INC.**

DRILL STEM TEST REPORT

FLUID SUMMARY

Murfin Drilling Company

14-10s-34w

250 N Water STE 300
Wichita KS, 67202-1216

Soucie Seele Unit 1-

Job Ticket: 042127

DST#: 1

ATTN: Tom Funk

Test Start: 2011.10.02 @ 17:26:00

Mud and Cushion Information

Mud Type: Gel Chem

Cushion Type:

Oil API:

21 deg API

Mud Weight: 9.00 lb/gal

Cushion Length:

ft

Water Salinity:

50000 ppm

Viscosity: 56.00 sec/qt

Cushion Volume:

bbbl

Water Loss: 6.00 in³

Gas Cushion Type:

Resistivity: 0.00 ohm.m

Gas Cushion Pressure:

psig

Salinity: 5800.00 ppm

Filter Cake: 2.00 inches

Recovery Information

Recovery Table

Length ft	Description	Volume bbbl
357.00	mcw 10%M 90%W	3.307
124.00	ocmw 10%O 20%M 70%W	1.739
15.00	100% Clean OIL	0.210

Total Length: 496.00 ft Total Volume: 5.256 bbl

Num Fluid Samples: 0

Num Gas Bombs: 0

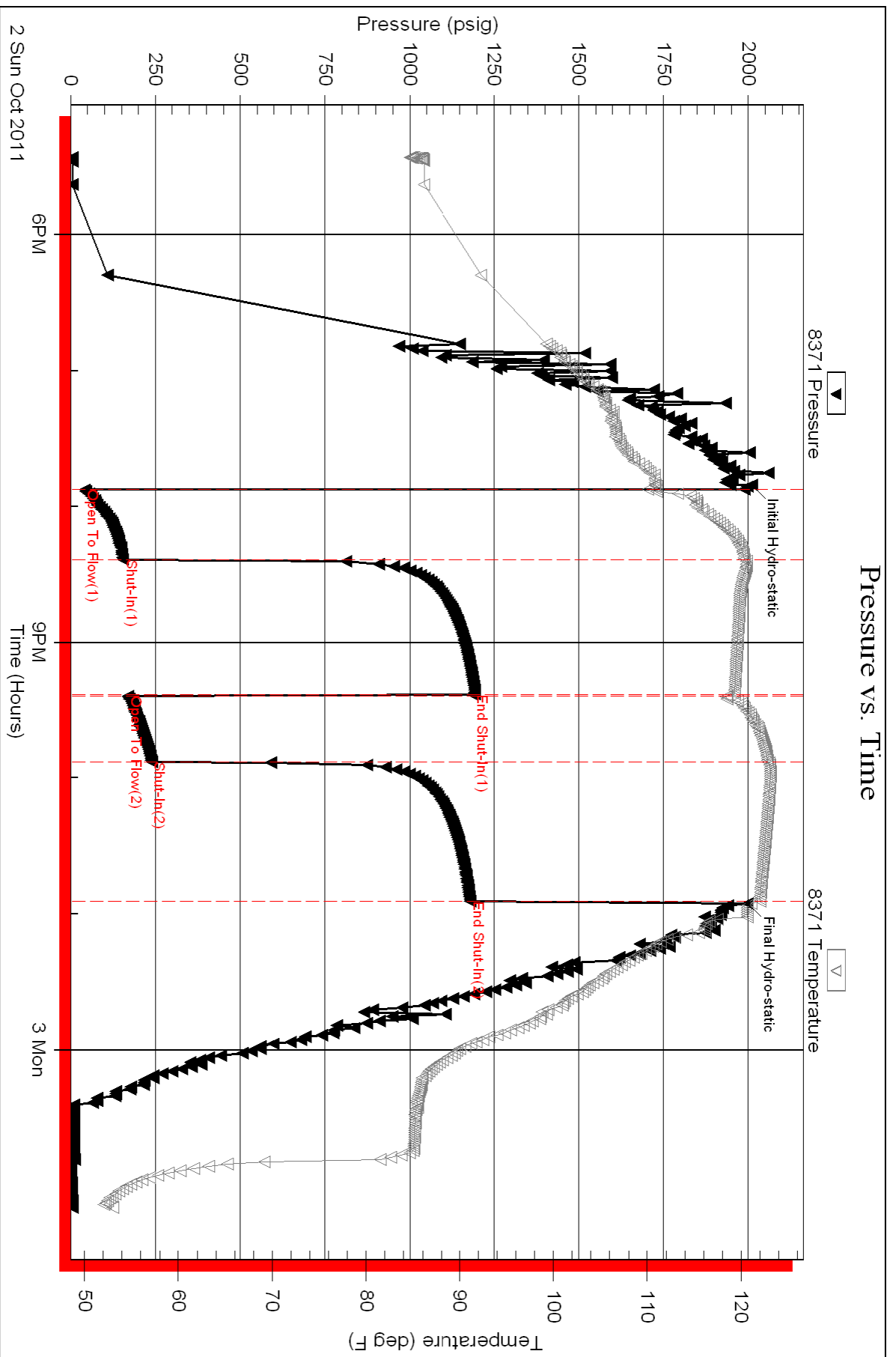
Serial #:

Laboratory Name:

Laboratory Location:

Recovery Comments: API: 21 @ 60 F= 21

RW: .19 @ 57 F = 50,000





TRILOBITE TESTING, INC.

DRILL STEM TEST REPORT

Murfin Drilling Company
 250 N Water STE 300
 Wichita KS, 67202-1216
 ATTN: Tom Funk

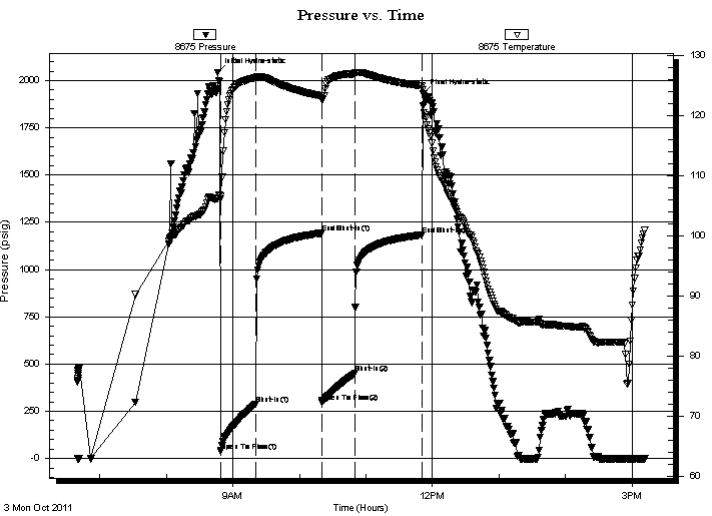
14-10s-34w
Soucie Seele Unit 1-
 Job Ticket: 042148 **DST#: 2**
 Test Start: 2011.10.03 @ 06:40:00

GENERAL INFORMATION:

Formation: **Lansing "C"**
 Deviated: No Whipstock: ft (KB)
 Time Tool Opened: 08:49:00
 Time Test Ended: 15:11:45
 Interval: ft (KB) To ft (KB) (TVD)
 Total Depth: 4167.00 ft (KB) (TVD)
 Hole Diameter: 7.88 inches Hole Condition:
 Test Type: Conventional Bottom Hole (Reset)
 Tester: Jace McKinney
 Unit No: 28
 Reference Elevations: 3217.00 ft (KB)
 3206.00 ft (CF)
 KB to GR/CF: 11.00 ft

Serial #: 8675 Inside
 Press @ Run Depth: 450.50 psig @ 4160.00 ft (KB) Capacity: 8000.00 psig
 Start Date: 2011.10.03 End Date: 2011.10.03 Last Calib.: 2011.10.03
 Start Time: 06:40:01 End Time: 15:11:45 Time On Btm: 2011.10.03 @ 08:46:30
 Time Off Btm: 2011.10.03 @ 11:51:45

TEST COMMENT: B.O.B. in 5 min.
 No return blow
 B.O.B. in 7 min.
 No return blow



PRESSURE SUMMARY

Time (Min.)	Pressure (psig)	Temp (deg F)	Annotation
0	2043.06	106.24	Initial Hydro-static
3	38.96	106.17	Open To Flow (1)
34	289.25	126.22	Shut-In(1)
94	1192.72	123.21	End Shut-In(1)
94	299.30	122.81	Open To Flow (2)
124	450.50	126.92	Shut-In(2)
184	1183.30	124.90	End Shut-In(2)
186	1931.02	121.64	Final Hydro-static

Recovery

Length (ft)	Description	Volume (bbl)
481.00	100% Water	5.05
186.00	mcw 10%M 90%W	2.61
201.00	ocmw 5%O 20%M 75%W	2.82

* Recovery from multiple tests

Gas Rates

Choke (inches)	Pressure (psig)	Gas Rate (Mcf/d)



**TRILOBITE
TESTING, INC.**

DRILL STEM TEST REPORT

FLUID SUMMARY

Murfin Drilling Company

14-10s-34w

250 N Water STE 300
Wichita KS, 67202-1216

Soucie Seele Unit 1-

Job Ticket: 042148

DST#: 2

ATTN: Tom Funk

Test Start: 2011.10.03 @ 06:40:00

Mud and Cushion Information

Mud Type: Gel Chem

Cushion Type:

Oil API:

deg API

Mud Weight: 9.00 lb/gal

Cushion Length:

ft

Water Salinity:

70000 ppm

Viscosity: 56.00 sec/qt

Cushion Volume:

bbbl

Water Loss: 6.00 in³

Gas Cushion Type:

Resistivity: 0.00 ohm.m

Gas Cushion Pressure:

psig

Salinity: 5800.00 ppm

Filter Cake: 2.00 inches

Recovery Information

Recovery Table

Length ft	Description	Volume bbbl
481.00	100% Water	5.047
186.00	mcw 10%M 90%W	2.609
201.00	ocmw 5%O 20%M 75%W	2.820

Total Length: 868.00 ft Total Volume: 10.476 bbl

Num Fluid Samples: 0

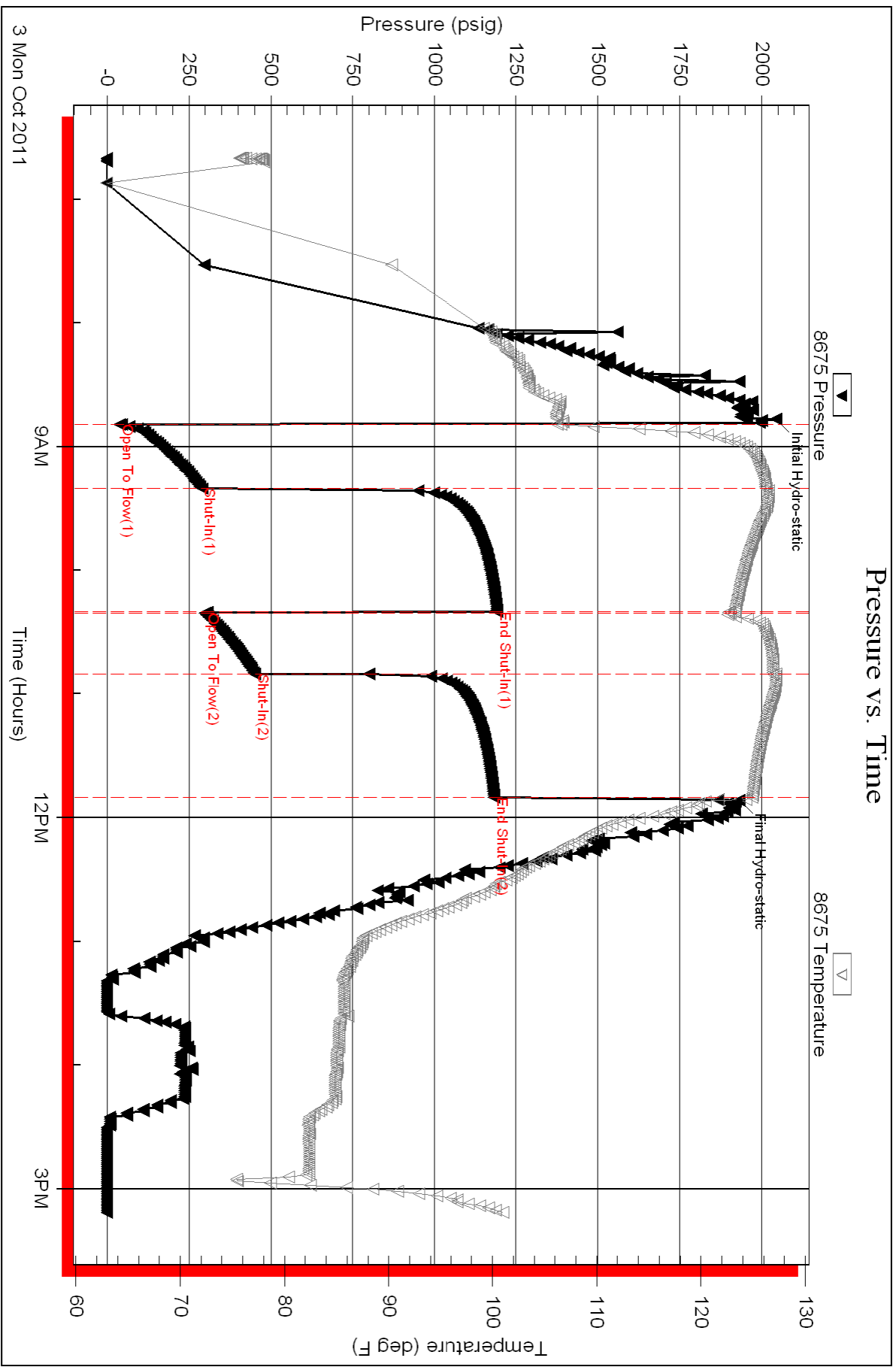
Num Gas Bombs: 0

Serial #:

Laboratory Name:

Laboratory Location:

Recovery Comments: RW: .09 @ 88 F = 70,000





TRILOBITE TESTING, INC.

DRILL STEM TEST REPORT

Murfin Drilling Company
 250 N Water STE 300
 Wichita KS, 67202-1216
 ATTN: Tom Funk

14-10s-34w
Soucie Seele Unit 1-
 Job Ticket: 042149 **DST#: 3**
 Test Start: 2011.10.04 @ 05:45:00

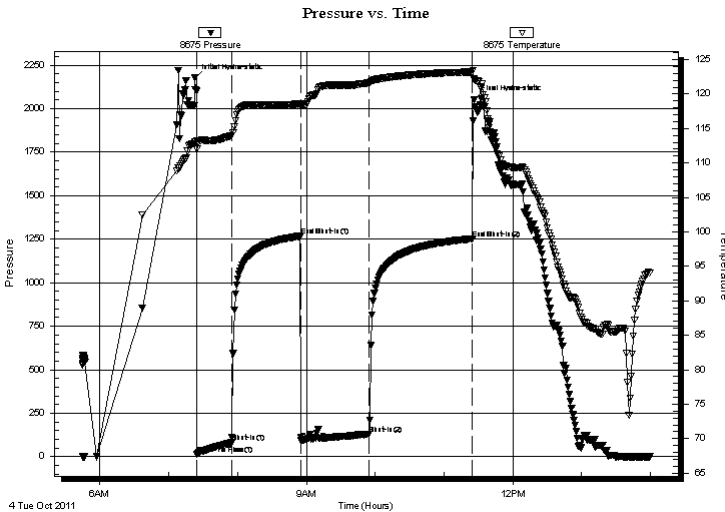
GENERAL INFORMATION:

Formation: **Kansas City "H"**
 Deviated: No Whipstock: ft (KB)
 Test Type: Conventional Bottom Hole (Reset)
 Time Tool Opened: 07:24:45 Tester: Jace McKinney
 Time Test Ended: 13:59:15 Unit No: 28
 Interval: **4277.00 ft (KB) To 4310.00 ft (KB) (TVD)** Reference Elevations: 3217.00 ft (KB)
 Total Depth: 4167.00 ft (KB) (TVD) 3206.00 ft (CF)
 Hole Diameter: 7.88 inches Hole Condition: KB to GR/CF: 11.00 ft

Serial #: 8675 Inside
 Press @ Run Depth: 128.69 psig @ 4278.00 ft (KB) Capacity: 8000.00 psig
 Start Date: 2011.10.04 End Date: 2011.10.04 Last Calib.: 2011.10.04
 Start Time: 05:45:01 End Time: 13:59:15 Time On Btm: 2011.10.04 @ 07:22:45
 Time Off Btm: 2011.10.04 @ 11:26:00

TEST COMMENT: Built to 5 1/2" blow
 No return blow
 Built to 7" blow
 No return blow

PRESSURE SUMMARY



Time (Min.)	Pressure (psig)	Temp (deg F)	Annotation
0	2175.74	113.11	Initial Hydro-static
2	14.65	112.05	Open To Flow (1)
33	80.47	113.96	Shut-In(1)
92	1267.75	118.58	End Shut-In(1)
93	96.08	118.32	Open To Flow (2)
152	128.69	121.60	Shut-In(2)
242	1252.77	123.21	End Shut-In(2)
244	2053.20	122.24	Final Hydro-static

Recovery

Length (ft)	Description	Volume (bbl)
186.00	w cgom 5%W 10%G 25%O 60%M	0.91
62.00	gco 10%G 90%O	0.86

* Recovery from multiple tests

Gas Rates

Choke (inches)	Pressure (psig)	Gas Rate (Mcf/d)



**TRILOBITE
TESTING, INC.**

DRILL STEM TEST REPORT

FLUID SUMMARY

Murfin Drilling Company

14-10s-34w

250 N Water STE 300
Wichita KS, 67202-1216

Soucie Seele Unit 1-

Job Ticket: 042149

DST#: 3

ATTN: Tom Funk

Test Start: 2011.10.04 @ 05:45:00

Mud and Cushion Information

Mud Type: Gel Chem

Cushion Type:

Oil API:

21 deg API

Mud Weight: 9.00 lb/gal

Cushion Length:

ft

Water Salinity:

ppm

Viscosity: 69.00 sec/qt

Cushion Volume:

bbbl

Water Loss: 5.60 in³

Gas Cushion Type:

Resistivity: 0.00 ohm.m

Gas Cushion Pressure:

psig

Salinity: 5800.00 ppm

Filter Cake: 2.00 inches

Recovery Information

Recovery Table

Length ft	Description	Volume bbbl
186.00	w cgom 5%W 10%G 25%O 60%M	0.915
62.00	gco 10%G 90%O	0.864

Total Length: 248.00 ft Total Volume: 1.779 bbl

Num Fluid Samples: 0

Num Gas Bombs: 0

Serial #:

Laboratory Name:

Laboratory Location:

Recovery Comments: API: 24 @ 90 F= 21

Serial #: 8675

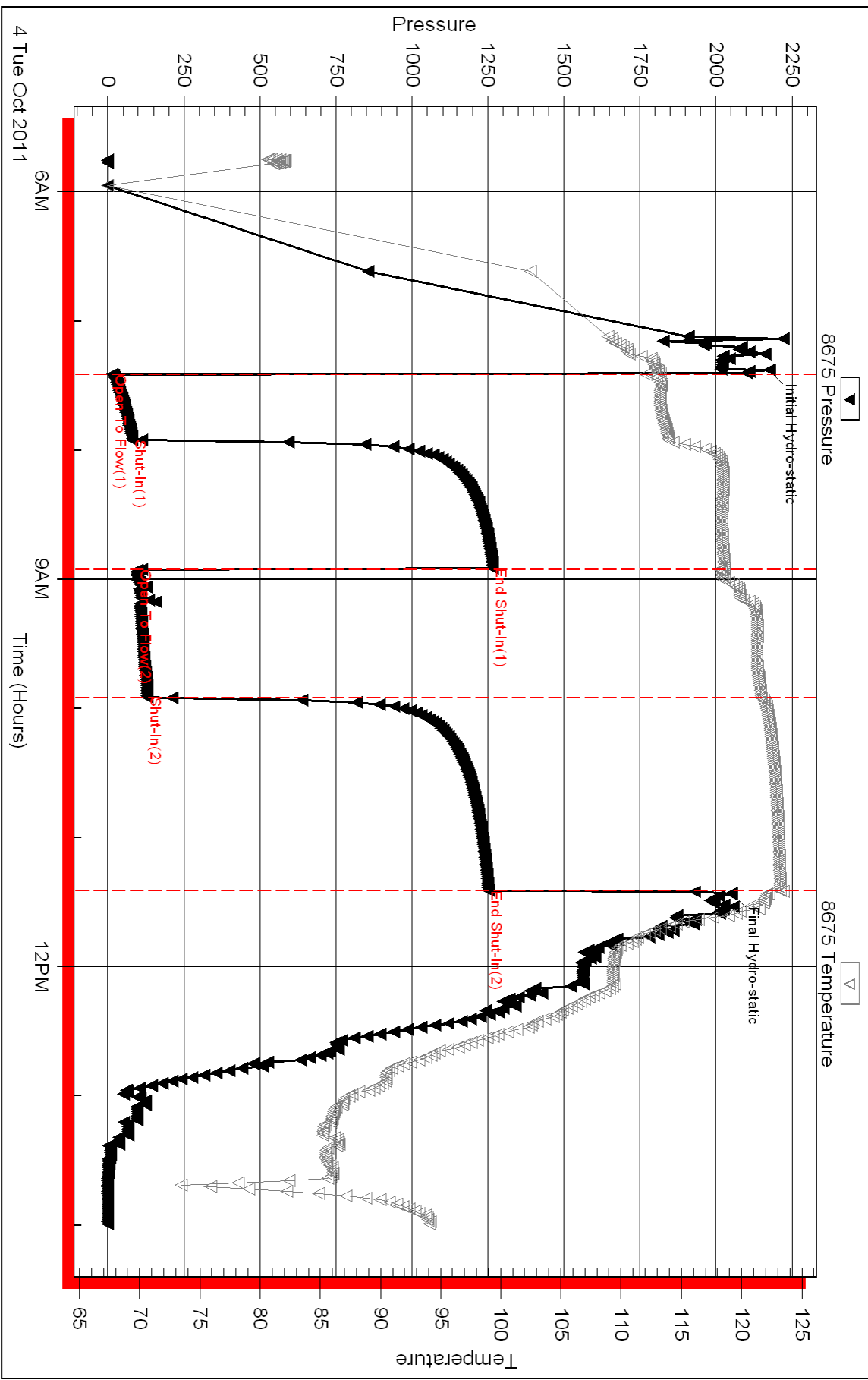
Inside

Murfin Drilling Company

Source Seele Unit 1-

DST Test Number: 3

Pressure vs. Time





TRILOBITE TESTING, INC.

DRILL STEM TEST REPORT

Murfin Drilling Company
 250 N Water STE 300
 Wichita KS, 67202-1216
 ATTN: Tom Funk

14-10s-34w
Soucie Seele Unit 1-
 Job Ticket: 042150 **DST#: 4**
 Test Start: 2011.10.05 @ 12:00:00

GENERAL INFORMATION:

Formation: **Kansas City "I-J"**
 Deviated: No Whipstock: ft (KB)
 Time Tool Opened: 14:07:15
 Time Test Ended: 18:59:30
 Interval: **4314.00 ft (KB) To 4365.00 ft (KB) (TVD)**
 Total Depth: 4365.00 ft (KB) (TVD)
 Hole Diameter: 7.88 inches Hole Condition: Poor
 Test Type: Conventional Bottom Hole (Reset)
 Tester: Jace McKinney
 Unit No: 28
 Reference Elevations: 3217.00 ft (KB)
 3206.00 ft (CF)
 KB to GR/CF: 11.00 ft

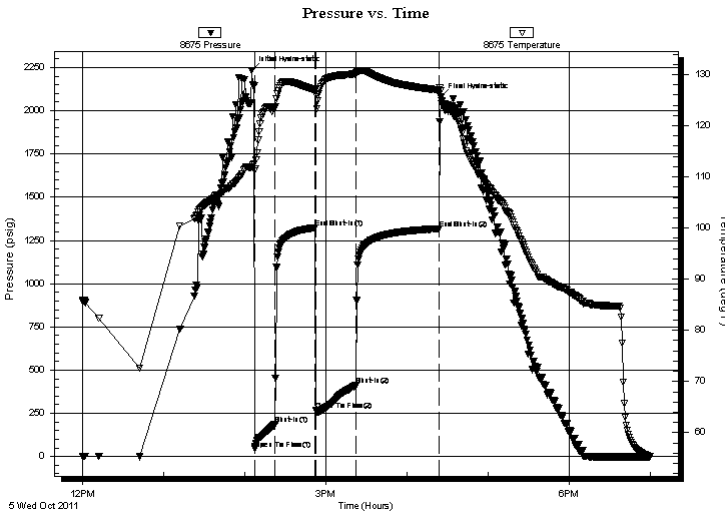
Serial #: 8675

Inside

Press @ Run Depth: 411.95 psig @ 4315.00 ft (KB) Capacity: 8000.00 psig
 Start Date: 2011.10.05 End Date: 2011.10.05 Last Calib.: 2011.10.05
 Start Time: 12:00:01 End Time: 18:59:30 Time On Btm: 2011.10.05 @ 14:05:15
 Time Off Btm: 2011.10.05 @ 16:24:45

TEST COMMENT: B.O.B in 3 min.
 Bled off for 5 min. B.O.B. in 15 min.
 B.O.B. in 4 1/2 min.
 Bled off for 5 min. Built to 8" return blow

PRESSURE SUMMARY



Time (Min.)	Pressure (psig)	Temp (deg F)	Annotation
0	2233.78	111.97	Initial Hydro-static
2	44.03	111.15	Open To Flow (1)
17	186.66	123.56	Shut-In(1)
47	1324.34	126.90	End Shut-In(1)
48	267.01	125.95	Open To Flow (2)
77	411.95	130.10	Shut-In(2)
139	1318.50	126.95	End Shut-In(2)
140	2079.01	126.81	Final Hydro-static

Recovery

Length (ft)	Description	Volume (bbl)
248.00	gcmo 10%G 20%M 70%O	1.78
248.00	gco 50%G 50%O	3.48
402.00	100% Clean Oil	5.64
0.00	620 feet gas in pipe	0.00

* Recovery from multiple tests

Gas Rates

Choke (inches)	Pressure (psig)	Gas Rate (Mcf/d)



**TRILOBITE
TESTING, INC.**

DRILL STEM TEST REPORT

FLUID SUMMARY

Murfin Drilling Company

14-10s-34w

250 N Water STE 300
Wichita KS, 67202-1216

Soucie Seele Unit 1-

Job Ticket: 042150

DST#: 4

ATTN: Tom Funk

Test Start: 2011.10.05 @ 12:00:00

Mud and Cushion Information

Mud Type: Gel Chem

Cushion Type:

Oil API:

38 deg API

Mud Weight: 9.00 lb/gal

Cushion Length:

ft

Water Salinity:

ppm

Viscosity: 65.00 sec/qt

Cushion Volume:

bbbl

Water Loss: 5.60 in³

Gas Cushion Type:

Resistivity: 0.00 ohm.m

Gas Cushion Pressure:

psig

Salinity: 6700.00 ppm

Filter Cake: 2.00 inches

Recovery Information

Recovery Table

Length ft	Description	Volume bbbl
248.00	gcmo 10%G 20%M 70%O	1.778
248.00	gco 50%G 50%O	3.479
402.00	100% Clean Oil	5.639
0.00	620 feet gas in pipe	0.000

Total Length: 898.00 ft Total Volume: 10.896 bbl

Num Fluid Samples: 0

Num Gas Bombs: 0

Serial #:

Laboratory Name:

Laboratory Location:

Recovery Comments: API: 37 @ 50 F = 38

Serial #: 8675

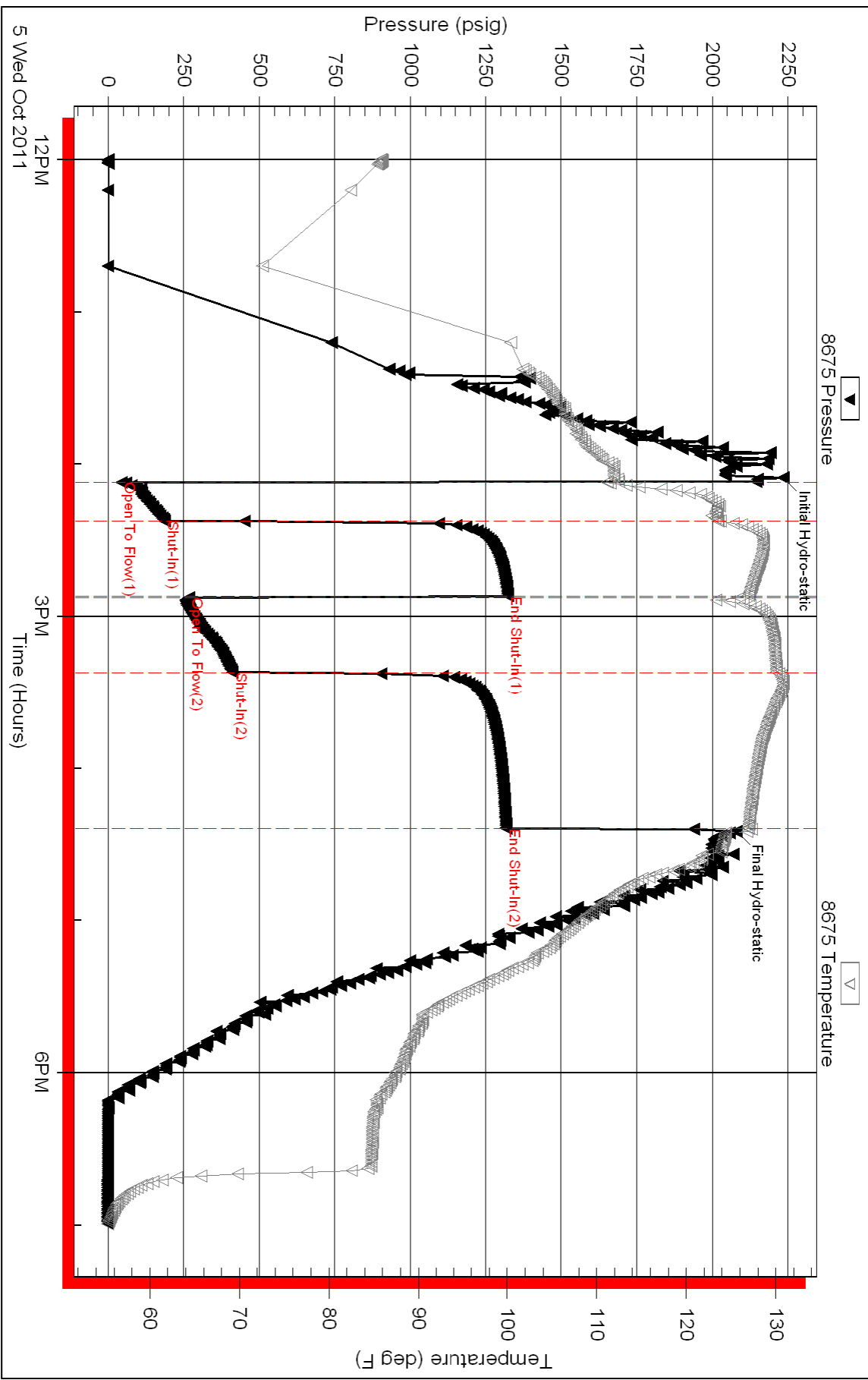
Inside

Murfin Drilling Company

Source Seele Unit 1-

DST Test Number: 4

Pressure vs. Time



Triobite Testing, Inc

Ref. No: 042150

Printed: 2011.10.05 @ 07:59:50



TRILOBITE TESTING, INC.

DRILL STEM TEST REPORT

Murfin Drilling Company
 250 N Water STE 300
 Wichita KS, 67202-1216
 ATTN: Tom Funk

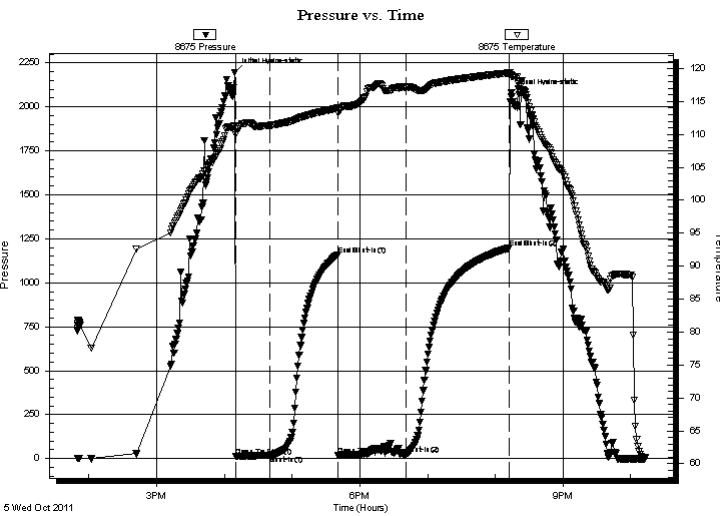
14-10s-34w
Soucie Seele Unit 1-
 Job Ticket: 44326 **DST#: 5**
 Test Start: 2011.10.05 @ 13:50:00

GENERAL INFORMATION:

Formation: **Kansas City "K"**
 Deviated: No Whipstock: ft (KB)
 Time Tool Opened: 16:10:15
 Time Test Ended: 22:12:30
 Interval: **4367.00 ft (KB) To 4395.00 ft (KB) (TVD)**
 Total Depth: 4395.00 ft (KB) (TVD)
 Hole Diameter: 7.88 inches Hole Condition: Poor
 Test Type: Conventional Bottom Hole (Reset)
 Tester: Jace McKinney
 Unit No: 28
 Reference Elevations: 3217.00 ft (KB)
 3206.00 ft (CF)
 KB to GR/CF: 11.00 ft

Serial #: 8675 Inside
 Press @ Run Depth: 26.17 psig @ 4368.00 ft (KB) Capacity: 8000.00 psig
 Start Date: 2011.10.05 End Date: 2011.10.05 Last Calib.: 2011.10.05
 Start Time: 13:50:01 End Time: 22:12:30 Time On Btm: 2011.10.05 @ 16:09:00
 Time Off Btm: 2011.10.05 @ 20:13:45

TEST COMMENT: Built to 3/4" blow
 No return blow
 Weak surface blow
 No return blow



PRESSURE SUMMARY

Time (Min.)	Pressure (psig)	Temp (deg F)	Annotation
0	2196.14	111.27	Initial Hydro-static
2	13.16	109.91	Open To Flow (1)
31	18.24	111.36	Shut-In(1)
92	1160.36	114.01	End Shut-In(1)
92	19.98	113.25	Open To Flow (2)
152	26.17	117.16	Shut-In(2)
244	1198.41	119.35	End Shut-In(2)
245	2078.15	119.00	Final Hydro-static

Recovery

Length (ft)	Description	Volume (bbl)
10.00	100% Mud	0.05

* Recovery from multiple tests

Gas Rates

Choke (inches)	Pressure (psig)	Gas Rate (Mcf/d)



**TRILOBITE
TESTING, INC.**

DRILL STEM TEST REPORT

FLUID SUMMARY

Murfin Drilling Company
250 N Water STE 300
Wichita KS, 67202-1216
ATTN: Tom Funk

14-10s-34w
Soucie Seele Unit 1-
Job Ticket: 44326 **DST#: 5**
Test Start: 2011.10.05 @ 13:50:00

Mud and Cushion Information

Mud Type: Gel Chem	Cushion Type:	Oil API:	deg API
Mud Weight: 9.00 lb/gal	Cushion Length: ft	Water Salinity:	ppm
Viscosity: 56.00 sec/qt	Cushion Volume: bbl		
Water Loss: 5.99 in ³	Gas Cushion Type:		
Resistivity: 0.00 ohm.m	Gas Cushion Pressure: psig		
Salinity: 5800.00 ppm			
Filter Cake: 2.00 inches			

Recovery Information

Recovery Table

Length ft	Description	Volume bbl
10.00	100% Mud	0.049

Total Length: 10.00 ft Total Volume: 0.049 bbl

Num Fluid Samples: 0 Num Gas Bombs: 0 Serial #:

Laboratory Name: Laboratory Location:

Recovery Comments:

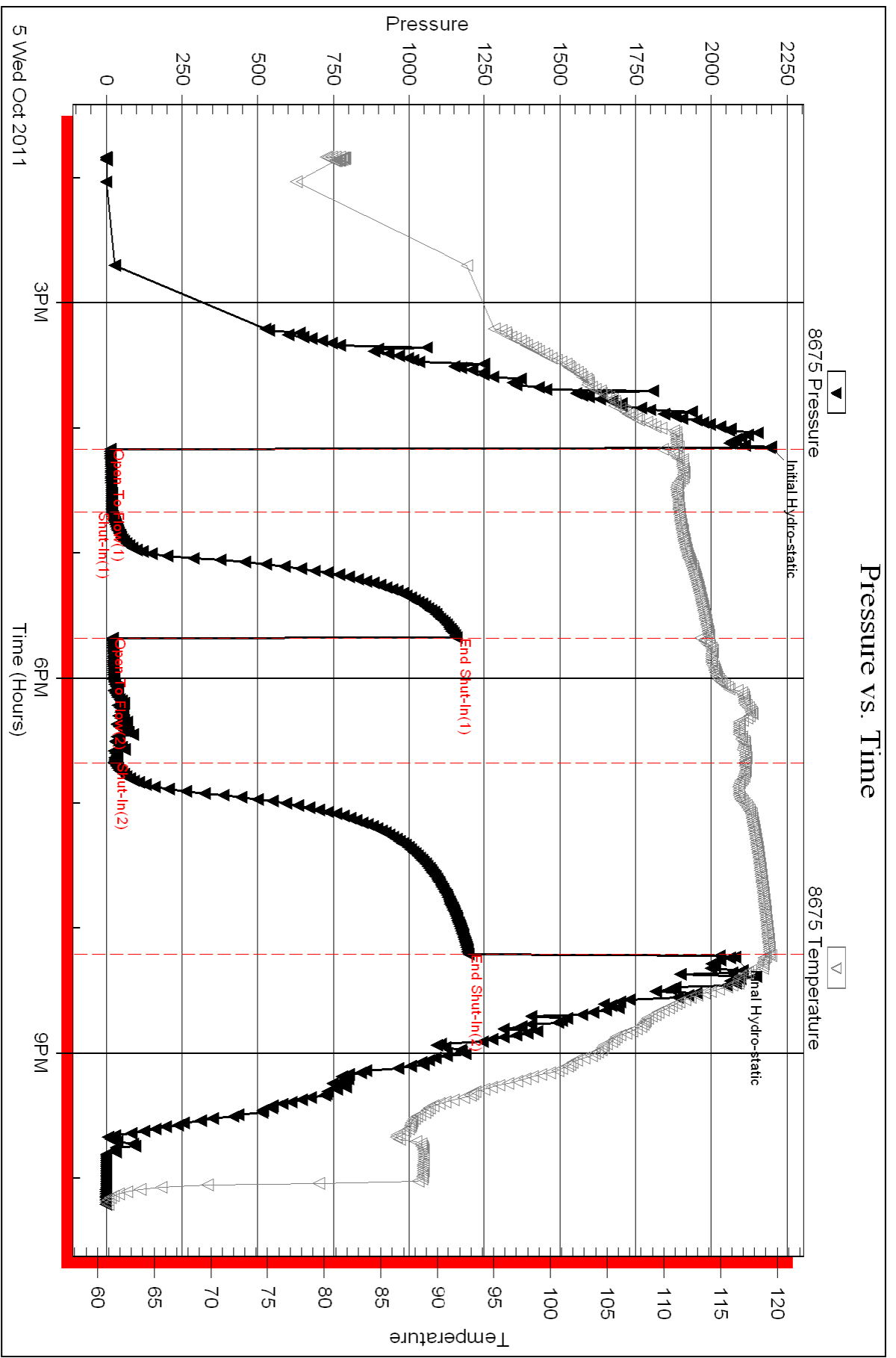
Serial #: 8675

Inside

Murfin Drilling Company

Source Seele Unit 1-

DST Test Number: 5



Triobite Testing, Inc

Ref. No: 44326

Printed: 2011.10.06 @ 08:51:19



TRILOBITE TESTING, INC.

DRILL STEM TEST REPORT

Murfin Drilling Company
 250 N Water STE 300
 Wichita KS, 67202-1216
 ATTN: Tom Funk

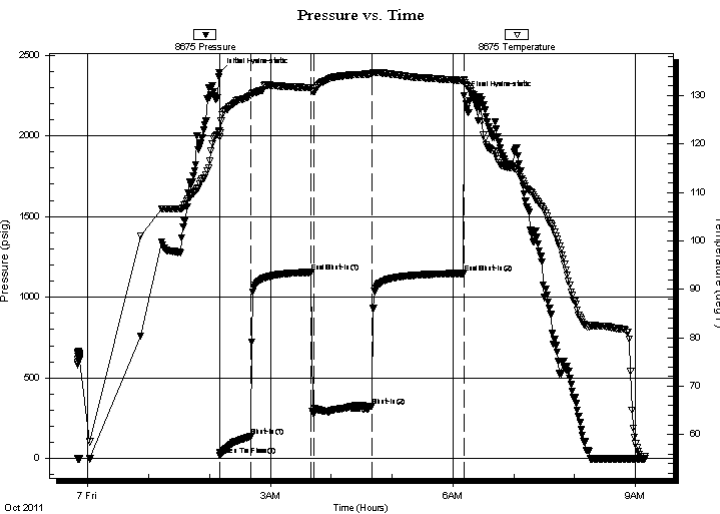
14-10s-34w
Soucie Seele Unit 1-
 Job Ticket: 44327 **DST#: 6**
 Test Start: 2011.10.06 @ 23:50:00

GENERAL INFORMATION:

Formation: **Myric Station**
 Deviated: No Whipstock: ft (KB)
 Time Tool Opened: 02:10:30
 Time Test Ended: 09:09:00
 Test Type: Conventional Bottom Hole (Reset)
 Tester: Jace McKinney
 Unit No: 28
 Interval: ft (KB) To ft (KB) (TVD)
 Total Depth: 4617.00 ft (KB) (TVD)
 Reference Elevations: 3217.00 ft (KB)
 3206.00 ft (CF)
 Hole Diameter: 7.88 inches Hole Condition: Poor
 KB to GR/CF: 11.00 ft

Serial #: 8675 Inside
 Press @ Run Depth: 325.42 psig @ 4587.00 ft (KB) Capacity: 8000.00 psig
 Start Date: 2011.10.06 End Date: 2011.10.07 Last Calib.: 2011.10.07
 Start Time: 23:50:01 End Time: 09:09:00 Time On Btm: 2011.10.07 @ 02:09:45
 Time Off Btm: 2011.10.07 @ 06:11:15

TEST COMMENT: B.O.B. in 24 min.
 Bled off for 5 min. No return blow
 B.O.B. in 34 min
 Bled off for 5 min. Weak return blow



PRESSURE SUMMARY

Time (Min.)	Pressure (psig)	Temp (deg F)	Annotation
0	2393.59	122.73	Initial Hydro-static
1	18.38	122.28	Open To Flow (1)
31	135.75	130.00	Shut-In(1)
91	1154.89	131.62	End Shut-In(1)
93	274.83	130.86	Open To Flow (2)
151	325.42	134.51	Shut-In(2)
241	1148.22	133.09	End Shut-In(2)
242	2249.38	133.33	Final Hydro-static

Recovery

Length (ft)	Description	Volume (bbl)
310.00	100% Water	2.65
196.00	mcw 10%M 90%W	2.75

* Recovery from multiple tests

Gas Rates

Choke (inches)	Pressure (psig)	Gas Rate (Mcf/d)



**TRILOBITE
TESTING, INC.**

DRILL STEM TEST REPORT

FLUID SUMMARY

Murfin Drilling Company

14-10s-34w

250 N Water STE 300
Wichita KS, 67202-1216

Soucie Seele Unit 1-

Job Ticket: 44327

DST#: 6

ATTN: Tom Funk

Test Start: 2011.10.06 @ 23:50:00

Mud and Cushion Information

Mud Type: Gel Chem

Cushion Type:

Oil API:

deg API

Mud Weight: 9.00 lb/gal

Cushion Length:

ft

Water Salinity:

ppm

Viscosity: 54.00 sec/qt

Cushion Volume:

bbbl

Water Loss: 6.00 in³

Gas Cushion Type:

Resistivity: 0.00 ohm.m

Gas Cushion Pressure:

psig

Salinity: 7900.00 ppm

Filter Cake: 2.00 inches

Recovery Information

Recovery Table

Length ft	Description	Volume bbbl
310.00	100% Water	2.648
196.00	mcw 10%M 90%W	2.749

Total Length: 506.00 ft Total Volume: 5.397 bbl

Num Fluid Samples: 0

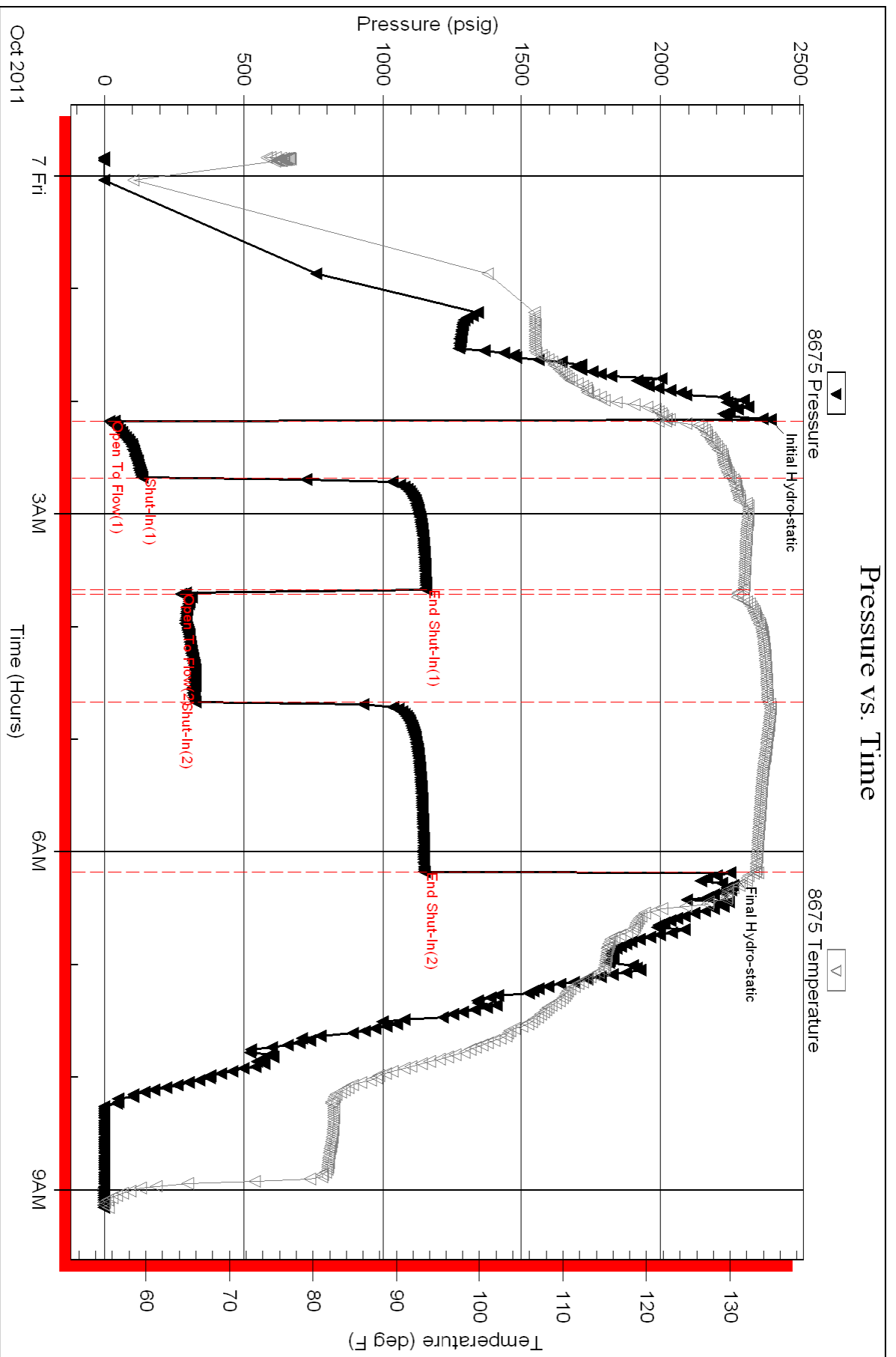
Num Gas Bombs: 0

Serial #:

Laboratory Name:

Laboratory Location:

Recovery Comments: RW: .21 @ 51 F = 50,000





**TRILOBITE
TESTING, INC.**

DRILL STEM TEST REPORT

Murfin Drilling Company
250 N Water STE 300
Wichita KS, 67202-1216
ATTN: Tom Funk

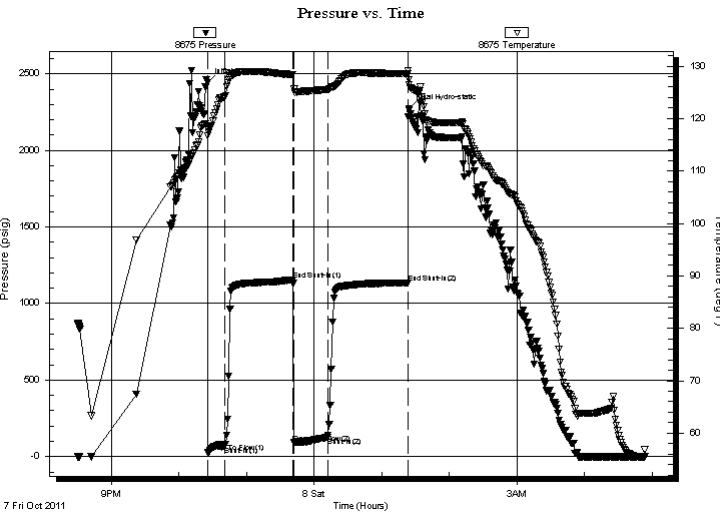
14-10s-34w
Soucie Seele Unit 1-
Job Ticket: 44228 **DST#: 7**
Test Start: 2011.10.07 @ 20:30:00

GENERAL INFORMATION:

Formation: **Johnson**
Deviated: No Whipstock: ft (KB)
Time Tool Opened: 22:25:30
Time Test Ended: 04:53:15
Test Type: Conventional Bottom Hole (Reset)
Tester: Jace McKinney
Unit No: 28
Interval: ft (KB) To ft (KB) (TVD)
Total Depth: 4730.00 ft (KB) (TVD)
Reference Elevations: 3217.00 ft (KB)
3206.00 ft (CF)
Hole Diameter: 7.88 inches Hole Condition: Poor
KB to GR/CF: 11.00 ft

Serial #: 8675 Inside
Press @ Run Depth: 126.95 psig @ 4670.00 ft (KB) Capacity: 8000.00 psig
Start Date: 2011.10.07 End Date: 2011.10.08 Last Calib.: 2011.10.08
Start Time: 20:30:01 End Time: 04:53:15 Time On Btm: 2011.10.07 @ 22:25:15
Time Off Btm: 2011.10.08 @ 01:24:00

TEST COMMENT: B.O.B. in 10 min.
Bled off for 5 min. Built to 4 1/2" return blow
B.O.B. in 8 min.
Bled off for 5 min. Built to 7" return blow



PRESSURE SUMMARY

Time (Min.)	Pressure (psig)	Temp (deg F)	Annotation
0	2444.00	118.37	Initial Hydro-static
1	25.61	116.76	Open To Flow (1)
16	65.92	124.16	Shut-In(1)
76	1155.90	128.35	End Shut-In(1)
77	90.40	125.63	Open To Flow (2)
107	126.95	125.56	Shut-In(2)
178	1134.48	128.59	End Shut-In(2)
179	2272.02	127.45	Final Hydro-static

Recovery

Length (ft)	Description	Volume (bbl)
186.00	gcom 30%G 30%O 40%M	0.91
248.00	100 % Oil	3.47

* Recovery from multiple tests

Gas Rates

Choke (inches)	Pressure (psig)	Gas Rate (Mcf/d)



**TRILOBITE
TESTING, INC.**

DRILL STEM TEST REPORT

FLUID SUMMARY

Murfin Drilling Company

14-10s-34w

250 N Water STE 300
Wichita KS, 67202-1216

Soucie Seele Unit 1-

Job Ticket: 44228

DST#: 7

ATTN: Tom Funk

Test Start: 2011.10.07 @ 20:30:00

Mud and Cushion Information

Mud Type: Gel Chem

Cushion Type:

Oil API:

30 deg API

Mud Weight: 9.00 lb/gal

Cushion Length:

ft

Water Salinity:

ppm

Viscosity: 56.00 sec/qt

Cushion Volume:

bbbl

Water Loss: 5.98 in³

Gas Cushion Type:

Resistivity: 0.00 ohm.m

Gas Cushion Pressure:

psig

Salinity: 5800.00 ppm

Filter Cake: 2.00 inches

Recovery Information

Recovery Table

Length ft	Description	Volume bbl
186.00	gcom 30%G 30%O 40%M	0.915
248.00	100 % Oil	3.473

Total Length: 434.00 ft Total Volume: 4.388 bbl

Num Fluid Samples: 0

Num Gas Bombs: 0

Serial #:

Laboratory Name:

Laboratory Location:

Recovery Comments: API: 30 @ 60 F = 30

Serial #: 8675

Inside

Murfin Drilling Company

Soucie Seele Unit 1-

DST Test Number: 7

