



## DRILL STEM TEST REPORT

Prepared For: **SHELBY RESOURCES LLC**

2717 CANAL BLVD

ATTN: KEITH REABIS

**7-22-16W PAWNEE**

**EAKIN 3-7**

Start Date: 2011.06.04 @ 16:20:00

End Date: 2011.06.05 @ 01:18:00

Job Ticket #: 15813                      DST #: 1

Superior Testers Enterprises LLC  
PO Box 138 Great Bend KS 67530  
1-800-792-6902

Printed: 2011.06.05 @ 02:07:01

SHELBY RESOURCES LLC  
EAKIN 3-7  
7-22-16W PAWNEE  
DST # 1  
ARBUCKLE  
2011.06.04



# DRILL STEM TEST REPORT

SHELBY RESOURCES LLC

**EAKIN 3-7**

2717 CANAL BLVD

**7-22-16W PAWNEE**

ATTN: KEITH REABIS

Job Ticket: 15813

**DST#: 1**

Test Start: 2011.06.04 @ 16:20:00

## GENERAL INFORMATION:

Formation: **ARBUCKLE**

Deviated: No Whipstock: ft (KB)

Time Tool Opened: 20:13:00

Time Test Ended: 01:18:00

Test Type: Conventional Bottom Hole (Initial)

Tester: DUSTIN ELLIS

Unit No: 3320

**Interval: 3877.00 ft (KB) To 3905.00 ft (KB) (TVD)**

Reference Elevations: 2017.00 ft (KB)

Total Depth: 3905.00 ft (KB) (TVD)

2006.00 ft (CF)

Hole Diameter: 7.88 inches Hole Condition: Fair

KB to GR/CF: 11.00 ft

**Serial #: 6663 Inside**

Press @ RunDepth: 148.15 psia @ 3901.00 ft (KB)

Capacity: 5000.00 psia

Start Date: 2011.06.04

End Date: 2011.06.05

Last Calib.: 2011.06.05

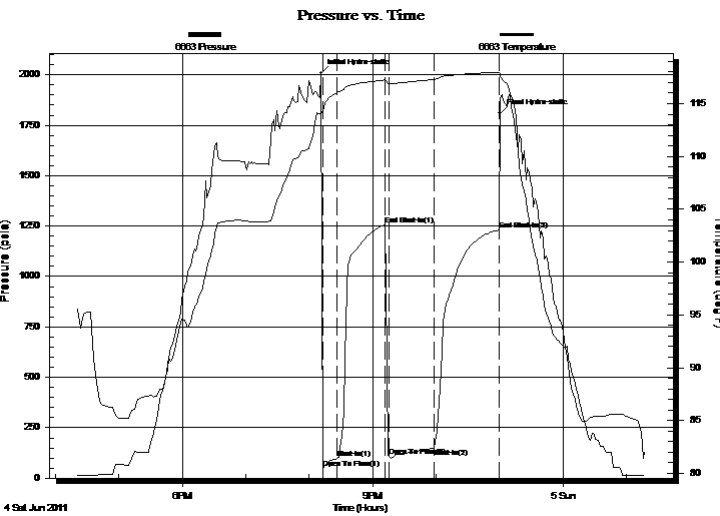
Start Time: 16:20:00

End Time: 01:18:00

Time On Btm: 2011.06.04 @ 20:11:30

Time Off Btm: 2011.06.04 @ 23:00:30

**TEST COMMENT:** 15/INITIAL OPEN:STRONG BLOW BUILT BOTTOM OF BUCKET IN 15 MINUTES  
 45/INITIAL SHUT IN:NO BLOW BACK  
 45/FINAL OPEN:STRONG BLOW BUILT BOTTOM OF BUCKET IN 5 MINUTES  
 60/FINAL SHUT IN:NO BLOW BACK



## PRESSURE SUMMARY

Time (Min.)	Pressure (psia)	Temp (deg F)	Annotation
0	2008.17	114.01	Initial Hydro-static
2	50.61	114.31	Open To Flow (1)
15	97.90	116.04	Shut-In(1)
61	1255.30	117.24	End Shut-In(1)
64	107.57	116.86	Open To Flow (2)
107	148.15	117.28	Shut-In(2)
168	1230.18	117.96	End Shut-In(2)
169	1809.55	117.86	Final Hydro-static

## Recovery

Length (ft)	Description	Volume (bbl)
120.00	GASYOIL CUT GAS 20% OIL 20% MUD	60.59
120.00	GASYOIL CUT MUD GAS20% OIL20%	1.14%
120.00	GASYOIL GAS 20% OIL80%	1.68
0.00	720 GAS IN PIPE	0.00
0.00	GRAVITY OIL 46	0.00

## Gas Rates

Choke (inches)	Pressure (psia)	Gas Rate (Mcf/d)
----------------	-----------------	------------------



# DRILL STEM TEST REPORT

SHELBY RESOURCES LLC

**EAKIN 3-7**

2717 CANAL BLVD

**7-22-16W PAWNEE**

ATTN: KEITH REABIS

Job Ticket: 15813

**DST#: 1**

Test Start: 2011.06.04 @ 16:20:00

## GENERAL INFORMATION:

Formation: **ARBUCKLE**

Deviated: No Whipstock: ft (KB)

Time Tool Opened: 20:13:00

Time Test Ended: 01:18:00

Test Type: Conventional Bottom Hole (Initial)

Tester: DUSTIN ELLIS

Unit No: 3320

**Interval: 3877.00 ft (KB) To 3905.00 ft (KB) (TVD)**

Reference Elevations: 2017.00 ft (KB)

Total Depth: 3905.00 ft (KB) (TVD)

2006.00 ft (CF)

Hole Diameter: 7.88 inches Hole Condition: Fair

KB to GR/CF: 11.00 ft

**Serial #: 6666 Outside**

Press @ Run Depth: 1229.21 psia @ 3902.00 ft (KB)

Capacity: 5000.00 psia

Start Date: 2011.06.04

End Date: 2011.06.05

Last Calib.: 2011.06.05

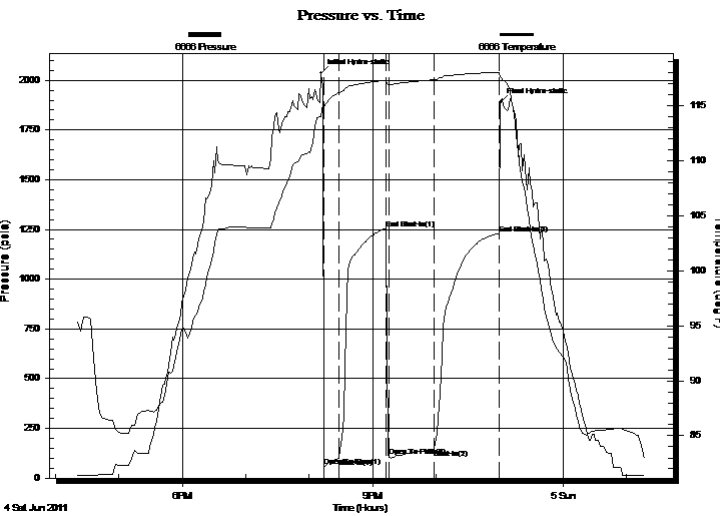
Start Time: 16:20:00

End Time: 01:18:00

Time On Btm: 2011.06.04 @ 20:11:30

Time Off Btm: 2011.06.04 @ 23:01:00

**TEST COMMENT:** 15/INITIAL OPEN:STRONG BLOW BUILT BOTTOM OF BUCKET IN 15 MINUTES  
 45/INITIAL SHUT IN:NO BLOW BACK  
 45/FINAL OPEN:STRONG BLOW BUILT BOTTOM OF BUCKET IN 5 MINUTES  
 60/FINAL SHUT IN:NO BLOW BACK



## PRESSURE SUMMARY

Time (Min.)	Pressure (psia)	Temp (deg F)	Annotation
0	2035.27	113.99	Initial Hydro-static
3	57.07	114.89	Open To Flow (1)
17	100.16	116.14	Shut-In(1)
62	1254.60	117.30	End Shut-In(1)
64	107.37	116.94	Open To Flow (2)
107	146.89	117.36	Shut-In(2)
168	1229.21	118.02	End Shut-In(2)
170	1887.74	117.66	Final Hydro-static

## Recovery

Length (ft)	Description	Volume (bbl)
120.00	GASYOIL CUT GAS 20% OIL 20% MUD	60.59
120.00	GASYOIL CUT MUD GAS20% OIL20%	1.14%
120.00	GASYOIL GAS 20% OIL80%	1.68
0.00	720 GAS IN PIPE	0.00
0.00	GRAVITY OIL 46	0.00

## Gas Rates

Choke (inches)	Pressure (psia)	Gas Rate (Mcf/d)



# DRILL STEM TEST REPORT

**TOOL DIAGRAM**

SHELBY RESOURCES LLC

**EAKIN 3-7**

2717 CANAL BLVD

**7-22-16W PAWNEE**

Job Ticket: 15813

**DST#: 1**

ATTN: KEITH REABIS

Test Start: 2011.06.04 @ 16:20:00

## Tool Information

Drill Pipe:	Length: 3675.00 ft	Diameter: 3.80 inches	Volume: 51.55 bbl	Tool Weight: 1000.00 lb
Heavy Wt. Pipe:	Length: 0.00 ft	Diameter: 0.00 inches	Volume: 0.00 bbl	Weight set on Packer: 20000.00 lb
Drill Collar:	Length: 180.00 ft	Diameter: 2.25 inches	Volume: 0.89 bbl	Weight to Pull Loose: 74000.00 lb
			<u>Total Volume: 52.44 bbl</u>	Tool Chased 0.00 ft
Drill Pipe Above KB:	7.00 ft			String Weight: Initial 63000.00 lb
Depth to Top Packer:	3877.00 ft			Final 63000.00 lb
Depth to Bottom Packer:	ft			
Interval between Packers:	28.00 ft			
Tool Length:	57.00 ft			
Number of Packers:	2	Diameter: 3.75 inches		

Tool Comments:

Tool Description	Length (ft)	Serial No.	Position	Depth (ft)	Accum. Lengths
------------------	-------------	------------	----------	------------	----------------

Change Over Sub	1.00			3849.00	
Shut-In Tool	5.00			3854.00	
Hydroic Tool	5.00			3859.00	
Jars	6.00			3865.00	
Safety Joint	2.00			3867.00	
Packer	5.00			3872.00	29.00 Bottom Of Top Packer
Packer	5.00			3877.00	
Perforations	23.00			3900.00	
Recorder	1.00	6663	Inside	3901.00	
Recorder	1.00	6666	Outside	3902.00	
Bullnose	3.00			3905.00	28.00 Bottom Packers & Anchor

**Total Tool Length: 57.00**



# DRILL STEM TEST REPORT

## FLUID SUMMARY

SHELBY RESOURCES LLC

**EAKIN 3-7**

2717 CANAL BLVD

**7-22-16W PAWNEE**

Job Ticket: 15813

**DST#: 1**

ATTN: KEITH REABIS

Test Start: 2011.06.04 @ 16:20:00

### Mud and Cushion Information

Mud Type: Invert	Cushion Type:	Oil API:	deg API
Mud Weight: 9.00 lb/gal	Cushion Length: ft	Water Salinity:	ppm
Viscosity: 52.00 sec/qt	Cushion Volume: bbl		
Water Loss: 9.60 in <sup>3</sup>	Gas Cushion Type:		
Resistivity: ohm.m	Gas Cushion Pressure: psia		
Salinity: 4000.00 ppm			
Filter Cake: 1.00 inches			

### Recovery Information

Recovery Table

Length ft	Description	Volume bbl
120.00	GASYOIL CUT GAS 20% OIL 20% MUD 60%	0.590
120.00	GASYOIL CUT MUD GAS20% OIL20% MUD60%	1.137
120.00	GASYOIL GAS 20% OIL80%	1.683
0.00	720 GAS IN PIPE	0.000
0.00	GRAVITY OIL 46	0.000

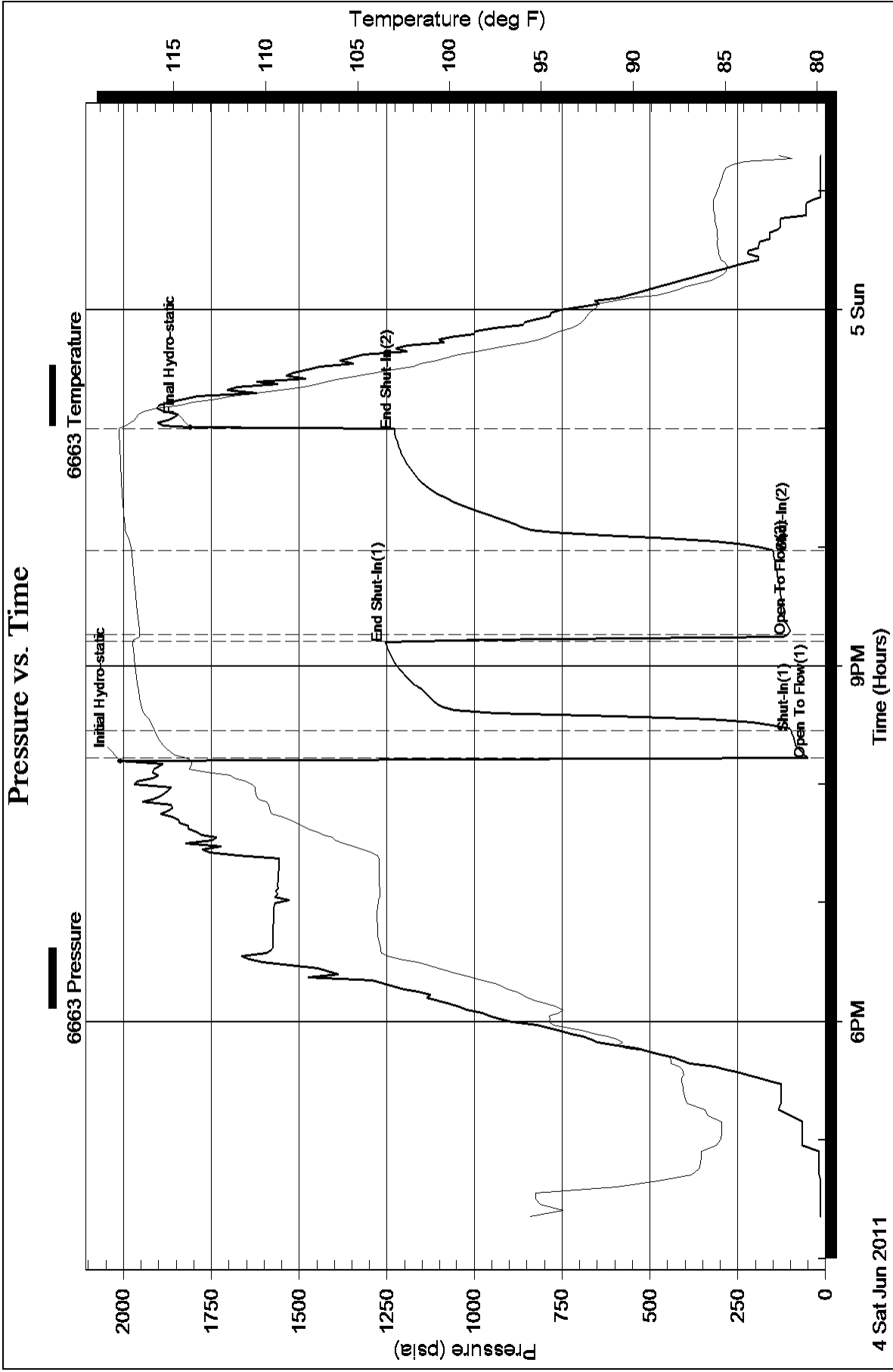
Total Length: 360.00 ft      Total Volume: 3.410 bbl

Num Fluid Samples: 0      Num Gas Bombs: 0      Serial #:

Laboratory Name:      Laboratory Location:

Recovery Comments: GRAVITY OIL 46

### Pressure vs. Time



# Pressure vs. Time

