

The Road to Excellence Starts with Safety

Sold To #: 348223	Ship To #: 2860053	Quote #:	Sales Order #: 8250538
Customer: EOG RESOURCES INC EBUSINESS		Customer Rep: Knox, Mike	
Well Name: Hittle Trust	Well #: 1 #1	API/UWI #:	
Field:	City (SAP): HUGOTON	County/Parish: Stevens	State: Kansas
Contractor: Kenai	Rig/Platform Name/Num: 58		
Job Purpose: Cement Surface Casing			
Well Type: Development Well		Job Type: Cement Surface Casing	
Sales Person: DRAKE, BRANDON		Srvc Supervisor: CARRILLO, EDUARDO	MBU ID Emp #: 371263

Job Personnel

HES Emp Name	Exp Hrs	Emp #	HES Emp Name	Exp Hrs	Emp #	HES Emp Name	Exp Hrs	Emp #
ARCHULETA, ERICK	6	454260	CARRILLO, EDUARDO Carrillo	6	371263	DEETZ, DONALD E	4	389855
PORTILLO, CESAR	6	457847	RODRIGUEZ, EDGAR Alejandro	6	442125			

Equipment

HES Unit #	Distance-1 way	HES Unit #	Distance-1 way	HES Unit #	Distance-1 way	HES Unit #	Distance-1 way
10240236	25 mile	10243558	25 mile	10744298C	25 mile	10866807	25 mile
10924982	25 mile	10988832	25 mile	11133699	25 mile		

Job Hours

Date	On Location Hours	Operating Hours	Date	On Location Hours	Operating Hours	Date	On Location Hours	Operating Hours
6-16-11	6	3						

TOTAL Total is the sum of each column separately

Job				Job Times			
Formation Name	Formation Depth (MD)	Top	Bottom	Called Out	Date	Time	Time Zone
Form Type			BHST	On Location	16 - Jun - 2011	10:15	CST
Job depth MD	1705. ft		Job Depth TVD	Job Started	16 - Jun - 2011	12:48	CST
Water Depth			Wk Ht Above Floor	Job Completed	16 - Jun - 2011	14:04	CST
Perforation Depth (MD)	From		To	Departed Loc	16 - Jun - 2011	15:30	CST

Well Data

Description	New / Used	Max pressure psig	Size in	ID in	Weight lbm/ft	Thread	Grade	Top MD ft	Bottom MD ft	Top TVD ft	Bottom TVD ft
Surface Hole				12.25					1700.		
Surface Casing	Unknown		8.625	8.097	24.				1700.		

Sales/Rental/3rd Party (HES)

Description	Qty	Qty uom	Depth	Supplier
SHOE,CSG,TIGER TOOTH,8 5/8 IN 8RD	1	EA		
CLR,FLT,TROPHY SEAL,8-5/8 8RD	1	EA		
AUTOFILL KIT,TROPHY SEAL	1	EA		
CENTRALIZER ASSY - API - 8-5/8 CSG X	12	EA		
CLAMP - LIMIT - 8-5/8 - HINGED -	2	EA		
BASKET - CEMENT - 8 5/8 CSG X 12 1/4	1	EA		
KIT,HALL WELD-A	2	EA		
PLUG,CMTG,TOP,8 5/8,HWE,7.20 MIN/8.09 MA	1	EA		

Tools and Accessories

Type	Size	Qty	Make	Depth	Type	Size	Qty	Make	Depth	Type	Size	Qty	Make
Guide Shoe	8 5/8	1	h	1705	Packer					Top Plug	8 5/8	1	h
Float Shoe					Bridge Plug					Bottom Plug			
Float Collar	8 5/8	1	h	1660	Retainer					SSR plug set			
Insert Float					centralizers	8 5/8	12	h		Plug Container	8 5/8	1	h

Miscellaneous Materials											
Gelling Agt		Conc	Surfactant		Conc	Acid Type		Qty	Conc		%
Treatment Fld		Conc	Inhibitor		Conc	Sand Type		Size	Qty		
Fluid Data											
Stage/Plug #: 1											
Fluid #	Stage Type	Fluid Name			Qty	Qty uom	Mixing Density lbm/gal	Yield ft ³ /sk	Mix Fluid Gal/sk	Rate bbl/min	Total Mix Fluid Gal/sk
1	Lead Cement	VARICEM (TM) CEMENT (452009)			300.0	sacks	11.4	2.96	18.14		18.14
	3 %	CALCIUM CHLORIDE - HI TEST PELLET (100005053)									
	0.1 %	WG-17, 50 LB SK (100003623)									
	0.25 lbm	POLY-E-FLAKE (101216940)									
	18.138 Gal	FRESH WATER									
2	Tail Cement	SWIFTCEM (TM) SYSTEM (452990)			200.0	sacks	15.6	1.2	5.22		5.22
	2 %	CALCIUM CHLORIDE - HI TEST PELLET (100005053)									
	0.25 lbm	POLY-E-FLAKE (101216940)									
	5.218 Gal	FRESH WATER									
3	Displacement				105.00	bbl	8.33	.0	.0	.0	
Calculated Values			Pressures			Volumes					
Displacement	105	Shut In: Instant			Lost Returns	0	Cement Slurry		201	Pad	
Top Of Cement	surface	5 Min			Cement Returns	55	Actual Displacement		105	Treatment	
Frac Gradient		15 Min			Spacers	0	Load and Breakdown			Total Job	306
Rates											
Circulating	9	Mixing		6	Displacement		9	Avg. Job			
Cement Left In Pipe		Amount	45 ft	Reason	Shoe Joint						
Frac Ring # 1 @		ID	Frac ring # 2 @		ID	Frac Ring # 3 @		ID	Frac Ring # 4 @		ID
The Information Stated Herein Is Correct					Customer Representative Signature						

The Road to Excellence Starts with Safety

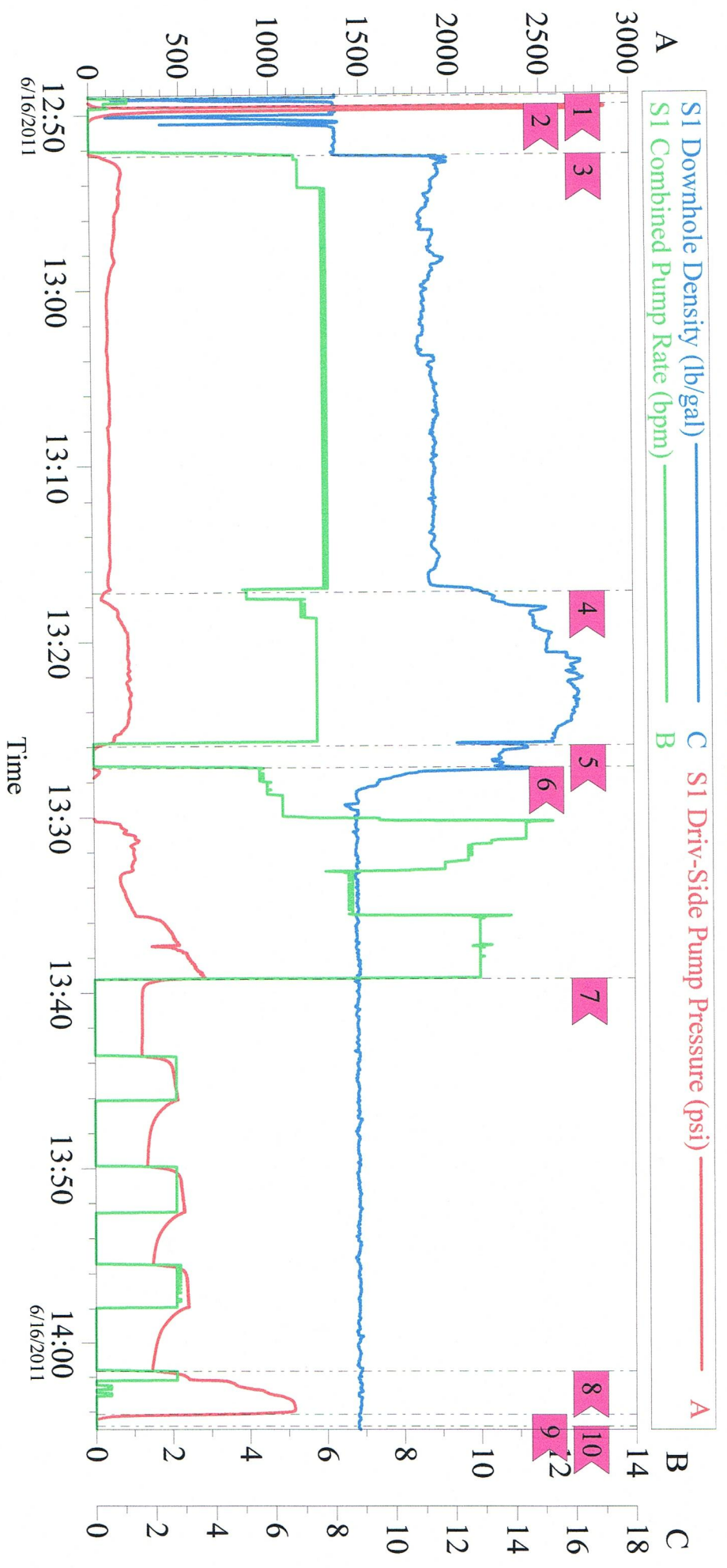
Sold To #: 348223	Ship To #: 2860053	Quote #:	Sales Order #: 8250538
Customer: EOG RESOURCES INC EBUSINESS		Customer Rep: Knox, Mike	
Well Name: Hittle Trust		Well #: 1 #1	API/UWI #:
Field:	City (SAP): HUGOTON	County/Parish: Stevens	State: Kansas
Legal Description:			
Lat:		Long:	
Contractor: Kenai		Rig/Platform Name/Num: 58	
Job Purpose: Cement Surface Casing			Ticket Amount:
Well Type: Development Well		Job Type: Cement Surface Casing	
Sales Person: DRAKE, BRANDON		Srvc Supervisor: CARRILLO, EDUARDO	MBU ID Emp #: 371263

Activity Description	Date/Time	Cht #	Rate bbl/min	Volume bbl		Pressure psig		Comments
				Stage	Total	Tubing	Casing	
Call Out	06/16/2011 06:30							Dispach Called Cement Crew Out For E.O.G. JOB On Hittle Trust # 1#1 // 8 5/8 Surface Pipe.
Pre-Convoy Safety Meeting	06/16/2011 09:30							Discuss Route to take and Hazards on the road
Arrive At Loc	06/16/2011 10:00							
Assessment Of Location Safety Meeting	06/16/2011 10:05							Rig Runing In Casing In Hole.
Other	06/16/2011 10:10							Got Numbers From Customer Rep Mike Knox / TD = 1701 FT / TP = 1705 FT / SJ = 45.00 FT / Disp = 105.5 BBLs. / 8 5/8 CAG 24 # CAP = .0636 / HOC = 13.6037 / 1705 - 45.00 = 1660 FT./ Customer Said To Pump CMT @ 6 BPM AND 8 To 10 BPM Disp Sage Last 20 BBLs.
Pre-Rig Up Safety Meeting	06/16/2011 10:15							Discussed All Red Zones Were To Spot Equipment And Run Lines Whent Over JAS.
Rig-Up Completed	06/16/2011 11:15							
Wait on Customer or Customer Sub-Contractor Equip	06/16/2011 11:16							Wait on Rig Crew
Other	06/16/2011 11:40							Casing On Bottom

Activity Description	Date/Time	Cht #	Rate bbl/min	Volume bbl		Pressure psig		Comments
				Stage	Total	Tubing	Casing	
Other	06/16/2011 11:45							tried to install head found closing jaws would lock up on casing. Service Leader arrived after circulation and installed head found casing on landing joint is out of round on casing put jaws close to collar works fine proceeded with job
Pre-Job Safety Meeting	06/16/2011 12:10							
Start Job	06/16/2011 12:48							Ready for Halliburton
Test Lines	06/16/2011 12:49						2000.0	Tested Lines @ 2000 PSI.
Pump Lead Cement	06/16/2011 12:52		6	158	158		150.0	Pumped 300 SKS @ 11.4 PPG // 300 X 2.96 X .1781 = 158 BBLs CMT // 300 X 2.96 = 888 CU/FT
Pump Tail Cement	06/16/2011 13:17		6	43	201		200.0	Pumped 200 SKS @ 15.6 PPG // 200 X 1.2 X .1781 = 43 BBLs CMT // 200 X 1.2 = 240 CU/FT
Shutdown	06/16/2011 13:24							
Drop Top Plug	06/16/2011 13:25							HWE
Pump Displacement	06/16/2011 13:37		9	105	306		250.0	Pumped 105 BBLs Displacement // Stage In Last 20 BBLs @ 85 BBLs Stop For 5 Min Then Pump 5 BBLs Till We Get To 105. got back 55 bbl cement returns
Stage Cement	06/16/2011 13:39							
Bump Plug	06/16/2011 14:01							bumped plug @ 500 took to 1000
Check Floats	06/16/2011 14:04							ok
End Job	06/16/2011 14:05							
Pre-Rig Down Safety Meeting	06/16/2011 14:10							Discuss Pinchpoint and Tripping Hazards

Activity Description	Date/Time	Cht #	Rate bbl/ min	Volume bbl		Pressure psig		Comments
				Stage	Total	Tubing	Casing	
Rig-Down Completed	06/16/2011 15:00							
Crew Leave Location	06/16/2011 15:30							
Other	06/16/2011 15:31							THANK YOU FOR CHOOSING HALLIBURTON

E.O.G. Hittle Trust # 1 # 1 8 5/8 Surface



Local Event Log

1	start job	12:49:01	2	pressure test	12:49:31	3	pump lead cement	12:52:22
4	pump tail cement	13:17:13	5	drop plug	13:25:59	6	pump displacement	13:27:13
7	stage cement	13:39:14	8	bump plug	14:01:39	9	check floats	14:04:08
10	end job	14:04:49						

Customer:

Job Date: 16-Jun-2011

Sales Order #: 8250538