

The Road to Excellence Starts with Safety

Sold To #: 348223		Ship To #: 2866054		Quote #:		Sales Order #: 8322993	
Customer: EOG RESOURCES INC EBUSINESS				Customer Rep: KNOX, MIKE			
Well Name: Vergil 14			Well #: 1		API/UWI #: 15-067-21726		
Field:		City (SAP): ULYSSES		County/Parish: Grant		State: Kansas	
Legal Description: Section 14 Township 30S Range 38W							
Contractor: KENAI			Rig/Platform Name/Num: 58				
Job Purpose: Cement Surface Casing							
Well Type: Development Well			Job Type: Cement Surface Casing				
Sales Person: DRAKE, BRANDON			Srv Supervisor: GRAVES, JEREMY			MBU ID Emp #: 399155	

Job Personnel

HES Emp Name	Exp Hrs	Emp #	HES Emp Name	Exp Hrs	Emp #	HES Emp Name	Exp Hrs	Emp #
ARCHULETA, ERICK	8	454260	BERUMEN, EDUARDO	8	267804	CHAVEZ, ERIK Adrain	8	324693
GOMEZ, OSCAR	8	490448	GRAVES, JEREMY Lee	8	399155	Norton, Bruce	8	499926

Equipment

HES Unit #	Distance-1 way	HES Unit #	Distance-1 way	HES Unit #	Distance-1 way	HES Unit #	Distance-1 way

Job Hours

Date	On Location Hours	Operating Hours	Date	On Location Hours	Operating Hours	Date	On Location Hours	Operating Hours
TOTAL			Total is the sum of each column separately					

Job

Job Times

Formation Name				Date	Time	Time Zone
Formation Depth (MD)	Top	Bottom		Called Out	15 - Jul - 2011	15:00 CST
Form Type	BHST			On Location	15 - Jul - 2011	19:00 CST
Job depth MD	1737. ft	Job Depth TVD	1742. ft	Job Started	16 - Jul - 2011	02:30 CST
Water Depth		Wk Ht Above Floor	3. ft	Job Completed	16 - Jul - 2011	04:00 CST
Perforation Depth (MD)	From	To		Departed Loc	16 - Jul - 2011	05:00 CST

Well Data

Description	New / Used	Max pressure psig	Size in	ID in	Weight lbm/ft	Thread	Grade	Top MD ft	Bottom MD ft	Top TVD ft	Bottom TVD ft
Surface Hole				12.25				.	1720.		
Surface Casing	Unknown		8.625	8.097	24.			.	1720.		

Sales/Rental/3rd Party (HES)

Description	Qty	Qty uom	Depth	Supplier
SHOE,CSG,TIGER TOOTH,8 5/8 IN 8RD	1	EA		
CENTRALIZER ASSY - API - 8-5/8 CSG X	9	EA		
KIT,HALL WELD-A	1	EA		
CLR,FLT,TROPHY SEAL,8-5/8 8RD	1	EA		
AUTOFILL KIT,TROPHY SEAL	1	EA		
PLUG,CMTG, TOP,8 5/8,HWE,7.20 MIN/8.09 MA	1	EA		
SUGAR - GRANULATED	30	LB		

Tools and Accessories

Type	Size	Qty	Make	Depth	Type	Size	Qty	Make	Depth	Type	Size	Qty	Make
Guide Shoe					Packer					Top Plug			
Float Shoe					Bridge Plug					Bottom Plug			
Float Collar					Retainer					SSR plug set			
Insert Float										Plug Container			
Stage Tool										Centralizers			

Miscellaneous Materials

Gelling Agt	Conc	Surfactant	Conc	Acid Type	Qty	Conc	%
Treatment Fld	Conc	Inhibitor	Conc	Sand Type	Size	Qty	

Fluid Data										
Stage/Plug #: 1										
Fluid #	Stage Type	Fluid Name	Qty	Qty uom	Mixing Density lbm/gal	Yield ft ³ /sk	Mix Fluid Gal/sk	Rate bbl/min	Total Mix Fluid Gal/sk	
1	Lead Cement	VARICEM (TM) CEMENT (452009)	300.0	sacks	11.4	2.96	18.14		18.14	
	3 %	CALCIUM CHLORIDE - HI TEST PELLET (100005053)								
	0.1 %	WG-17, 50 LB SK (100003623)								
	0.25 lbm	POLY-E-FLAKE (101216940)								
	18.138 Gal	FRESH WATER								
2	Tail Cement	SWIFTCEN (TM) SYSTEM (452990)	200.0	sacks	15.6	1.2	5.22		5.22	
	2 %	CALCIUM CHLORIDE - HI TEST PELLET (100005053)								
	0.25 lbm	POLY-E-FLAKE (101216940)								
	5.218 Gal	FRESH WATER								
3	Displacement		108.00	bbl	8.33	.0	.0	.0		
Calculated Values		Pressures		Volumes						
Displacement		Shut In: Instant		Lost Returns		Cement Slurry		Pad		
Top Of Cement		5 Min		Cement Returns		Actual Displacement		Treatment		
Frac Gradient		15 Min		Spacers		Load and Breakdown		Total Job		
Rates										
Circulating		Mixing		Displacement		Avg. Job				
Cement Left In Pipe	Amount	45 ft	Reason	Shoe Joint						
Frac Ring # 1 @	ID	Frac ring # 2 @	ID	Frac Ring # 3 @	ID	Frac Ring # 4 @	ID			
The Information Stated Herein Is Correct				Customer Representative Signature						

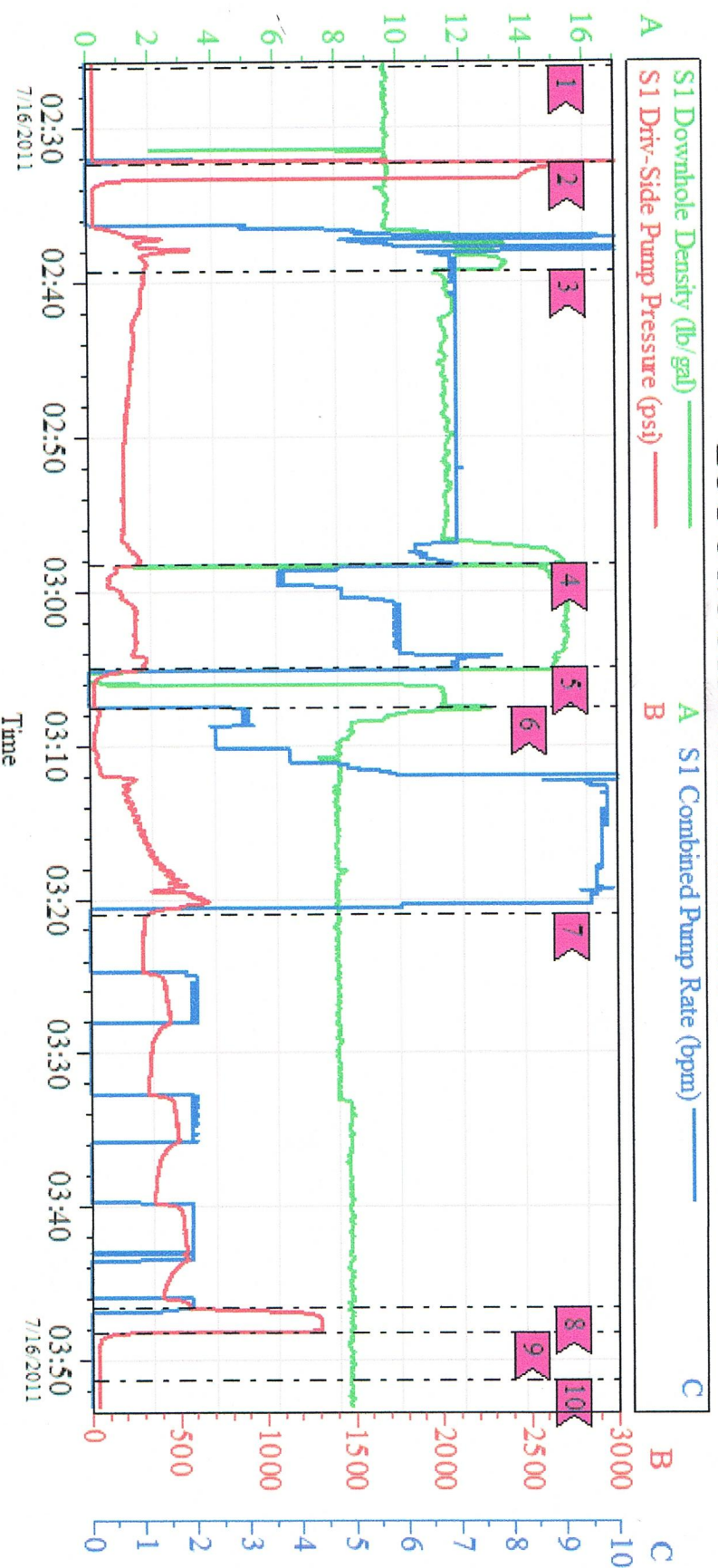
The Road to Excellence Starts with Safety

Sold To #: 348223		Ship To #: 2866054		Quote #:		Sales Order #: 8322993	
Customer: EOG RESOURCES INC EBUSINESS				Customer Rep: KNOX, MIKE			
Well Name: Vergil 14			Well #: 1		API/UWI #: 15-067-21726		
Field:		City (SAP): ULYSSES		County/Parish: Grant		State: Kansas	
Legal Description: Section 14 Township 30S Range 38W							
Lat: N 0 deg. OR N 0 deg. 0 min. 0 secs.				Long: E 0 deg. OR E 0 deg. 0 min. 0 secs.			
Contractor: KENAI			Rig/Platform Name/Num: 58				
Job Purpose: Cement Surface Casing						Ticket Amount:	
Well Type: Development Well			Job Type: Cement Surface Casing				
Sales Person: DRAKE, BRANDON			Srv Supervisor: GRAVES, JEREMY			MBU ID Emp #: 399155	

Activity Description	Date/Time	Cht #	Rate bbl/min	Volume bbl		Pressure psig		Comments
				Stage	Total	Tubing	Casing	
Call Out	07/15/2011 17:00							
Depart Location Safety Meeting	07/15/2011 19:30							JOURNEY MANAGEMENT
Arrive At Loc	07/15/2011 21:00							
Assessment Of Location Safety Meeting	07/15/2011 21:15							SPOT TRUCKS AND TALK WITH COMPANY MAN ABOUT PROCEDURES AND GOT NUMBERS FROM HIM
Pre-Rig Up Safety Meeting	07/15/2011 21:30							WENT OVER ALL POSSIBLE HAZARDS ON LOCATION
Rig-Up Completed	07/15/2011 22:00							
Other	07/15/2011 22:30							RIG CASING CREW UP RUNNING CASING INTO THE HOLE
Other	07/16/2011 01:33							C ASING ON BOTTOM RIG DOWN CASING CREW
Safety Meeting - Pre Job	07/16/2011 02:15							
Start Job	07/16/2011 02:26							
Test Lines	07/16/2011 02:32						3000.0	TEST LINES TO 3000PSI
Pump Lead Cement	07/16/2011 02:39		7	158	158			300SKS MIXED AT 11.4
Pump Tail Cement	07/16/2011 02:58		7	43	201			200SKS MIXED AT 15.6
Drop Top Plug	07/16/2011 03:05							

Activity Description	Date/Time	Cht #	Rate bbl/min	Volume bbl		Pressure psig		Comments
				Stage	Total	Tubing	Casing	
Pump Displacement	07/16/2011 03:07		10 2	108	309			TOTAL OF 108BBLS COMPANY MAD HAD US PUMP 88 AND STOP FOR 5MIN AND THEN PUMP 5 MORE AT 2BBLS PER MIN AND STOP AGAIN REPEATED THIS PROCESS UNTIL BUMPED PLUG
Bump Plug	07/16/2011 03:46						180	BUMPED PLUDG AT 780 took to 1400psi
Check Floats	07/16/2011 03:48							FLOATS HELD
End Job	07/16/2011 03:51							THANKS FOR CALLING HALLIBURTON
Pre-Rig Down Safety Meeting	07/16/2011 04:00							WENT OVER POSSIBLE HAZARDS GIVEN BY ERIC ARCHULETA
Rig-Down Completed	07/16/2011 04:15							
Depart Location for Service Center or Other Site	07/16/2011 05:00							JOURNEY MANAGEMENT

EOG 8 5/8 SURFACE VERGIL 14-1



Local Event Log

1	PUMP LEAD CEMENT	02:26:08	2	PRESSURE TEST	02:32:21
3	START JOB	02:39:16	4	PUMP TAIL CEMENT	02:58:16
5	DROP PLUG	03:05:02	6	PUMP DISPLACEMENT	03:07:35
7	STAGE IN DISPLACEMENT	03:21:00	8	BUMP PLUG	03:46:33
9	CHECK FLOATS	03:48:14	10	END JOB	03:51:16

Customer:
Well Description:

Job Date: 16-Jul-2011
UWI:

Sales Order #: 8322993

OptiCem v6.4.7
16-Jul-11 04:00